

V&V Reference Report

L2 ASCDS Version : 10

Observation 14954 - L2 Version 2
Chandra X-Ray Center

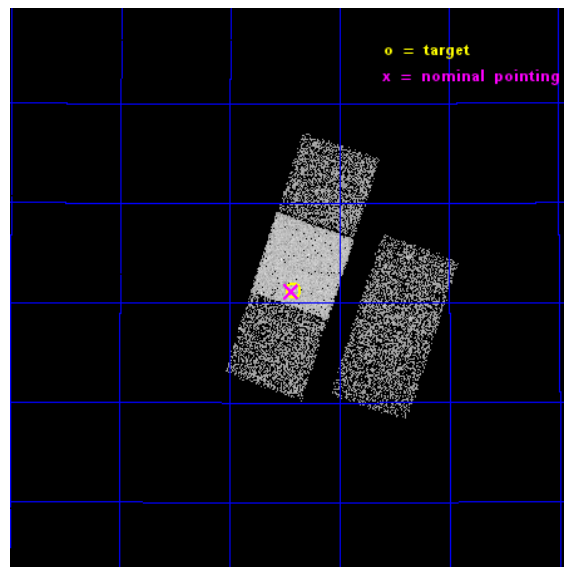
L2 Processing Date : Dec 6 2014

Contents

1	Front	2
2	OBI	3
2.1	OBI	3
2.1.1	Images	3
2.1.2	Bias	3
2.1.3	Parameters	4
2.1.4	Events	4
2.2	Compared Parameters	5
2.3	Aspect	6
2.4	Star Slots	9
2.4.1	Slot 3	9
2.4.2	Slot 4	10
2.4.3	Slot 5	11
2.4.4	Slot 6	12
2.4.5	Slot 7	13
2.5	FID Slots	14
2.5.1	Slot 0	14
2.5.2	Slot 1	15
2.5.3	Slot 2	16
A	Summary	17
A.1	Status	17
A.2	Comments	17

1 Front

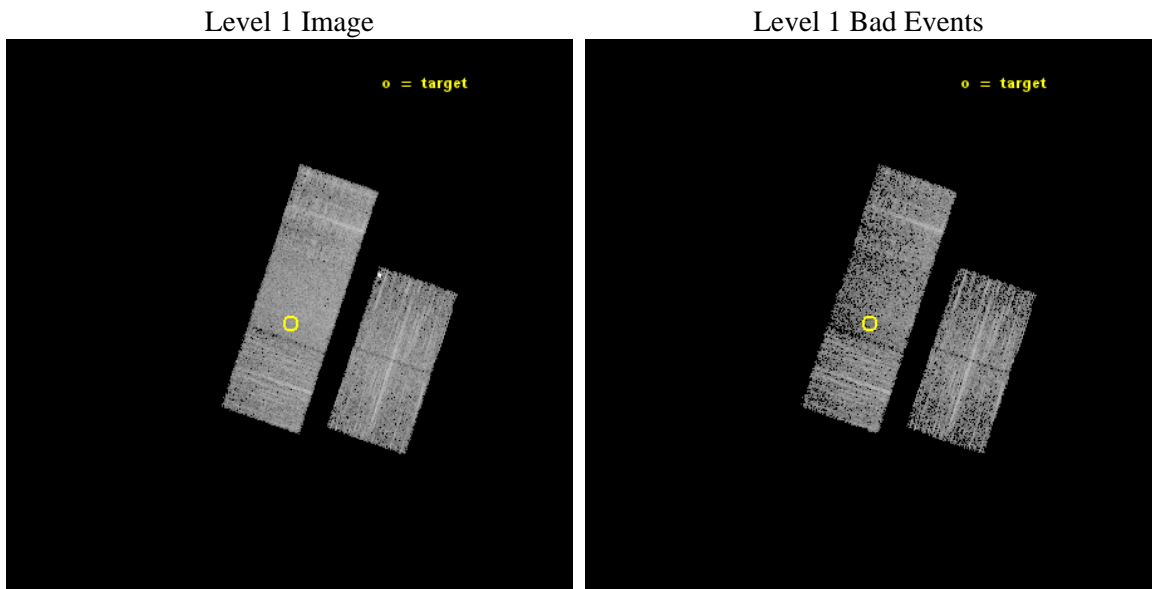
seq_num	702763	Sequence number
obs_id	14954	Observation id
title	Understanding the Nature of PHL 1811 Analogs	Proposal title
observer	Prof. William Brandt	Principal investigator
object	SDSS J1435+4001	Source name
dtcycle	0	
cycle	P	events from which exps? Prim/Second/Both
ra_targ	218.855417	Observer's specified target RA [deg]
dec_targ	40.020056	Observer's specified target Dec [deg]
ra_nom	218.85930658771	Nominal RA [deg]
dec_nom	40.01929980029	Nominal Dec [deg]
roll_nom	288.76337502059	Nominal Roll [deg]
revision	2	Processing version of data
ontime	6968.6472066641	Sum of GTIs [s]
livetime	6877.5967006656	Livetime [s]
ontime2	6968.4830466509	Sum of GTIs [s]
ontime3	6968.5651266575	Sum of GTIs [s]
ontime6	6968.6061666608	Sum of GTIs [s]
ontime7	6968.6472066641	Sum of GTIs [s]
ontime8	6968.5240866542	Sum of GTIs [s]
l2events	27980	Number of level 2 events



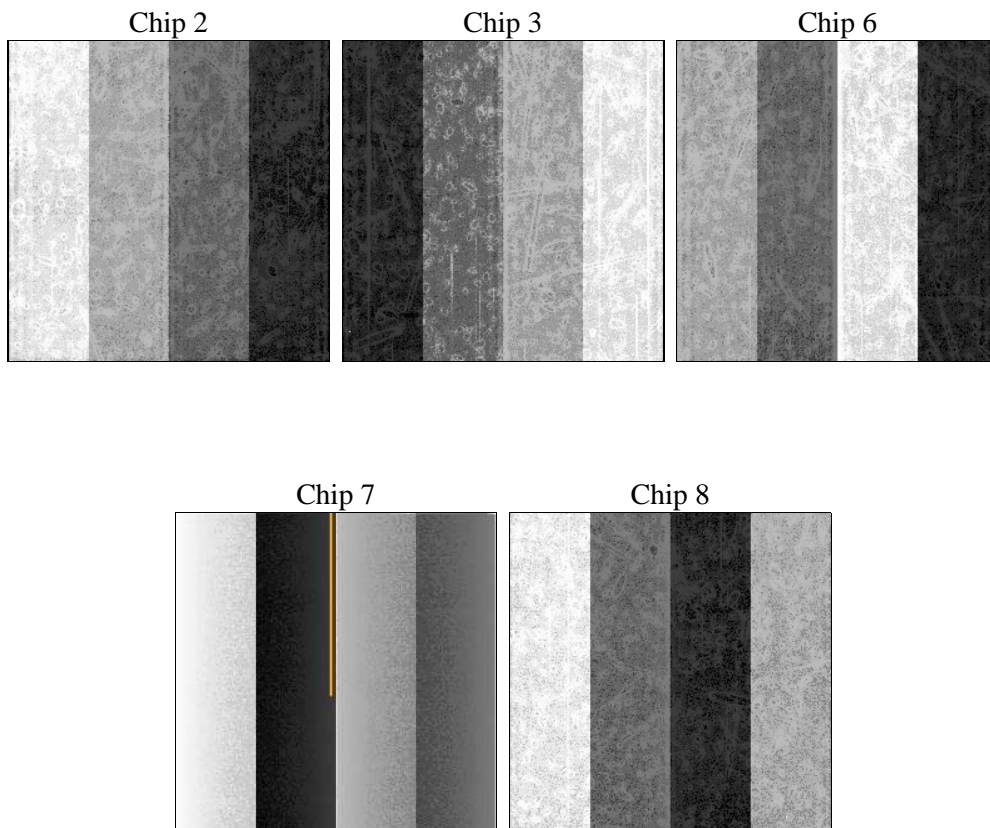
2 OBI

2.1 OBI

2.1.1 Images



2.1.2 Bias



2.1.3 Parameters

obi_num	1	Obi number	sched_exp_time	6900.000000	[s] Scheduled observation exposure time
ascdsver	10.3.1	Processing system revision	ontime	6968.6472066641	Sum of GTIs [s]
caldsver	4.6.4	 	ontime2	6968.4830466509	Sum of GTIs [s]
date	2014-12-06T09:53:51	Date and time of file creation	ontime3	6968.5651266575	Sum of GTIs [s]
revision	2	Processing version of data	ontime6	6968.6061666608	Sum of GTIs [s]
			ontime7	6968.6472066641	Sum of GTIs [s]
			ontime8	6968.5240866542	Sum of GTIs [s]
			l1events	159229	Number of level 1 events

2.1.4 Events

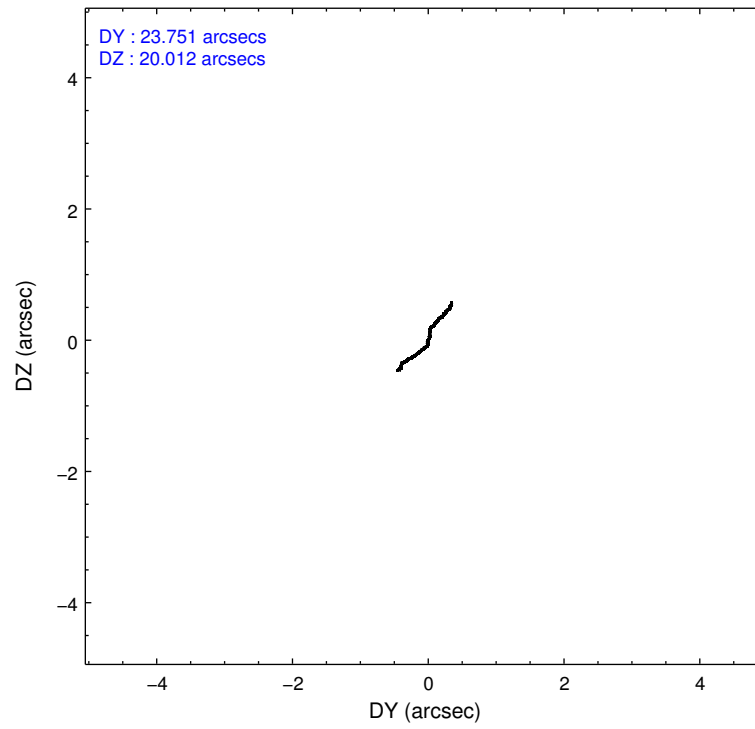
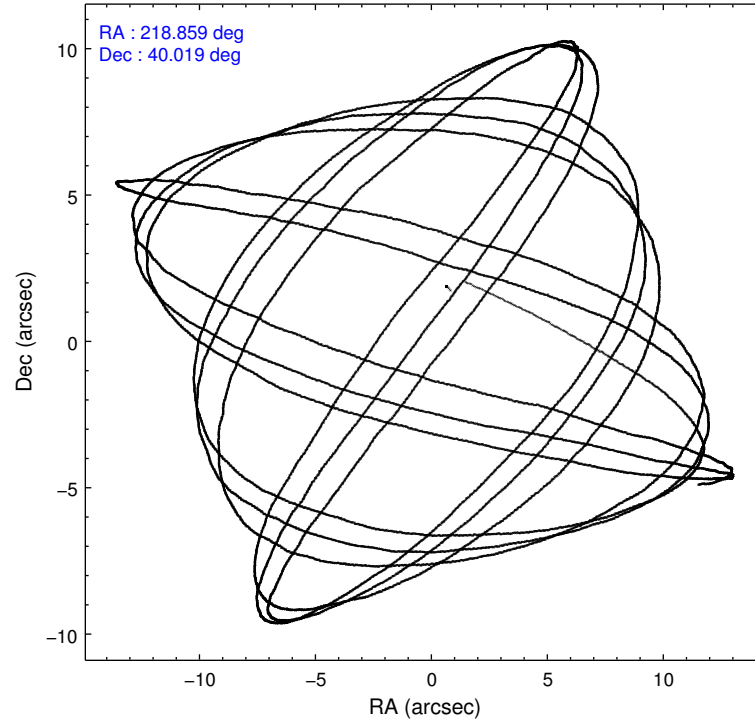
	ccd 2	ccd 3	ccd 6	ccd 7	ccd 8
level 1 events	28828	30214	29097	34484	36606
rejected events	25502	25300	25536	18140	26057
rejected %	88%	83%	87%	52%	71%

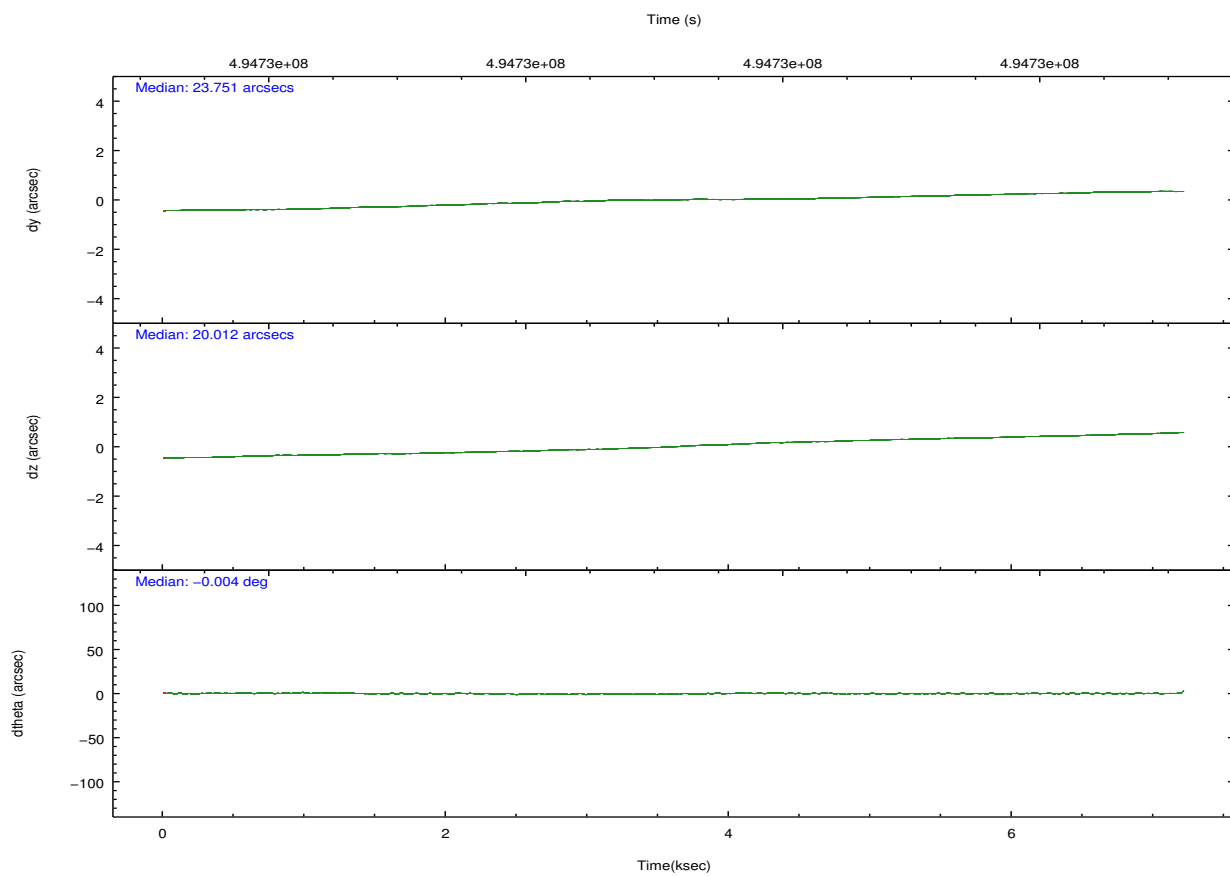
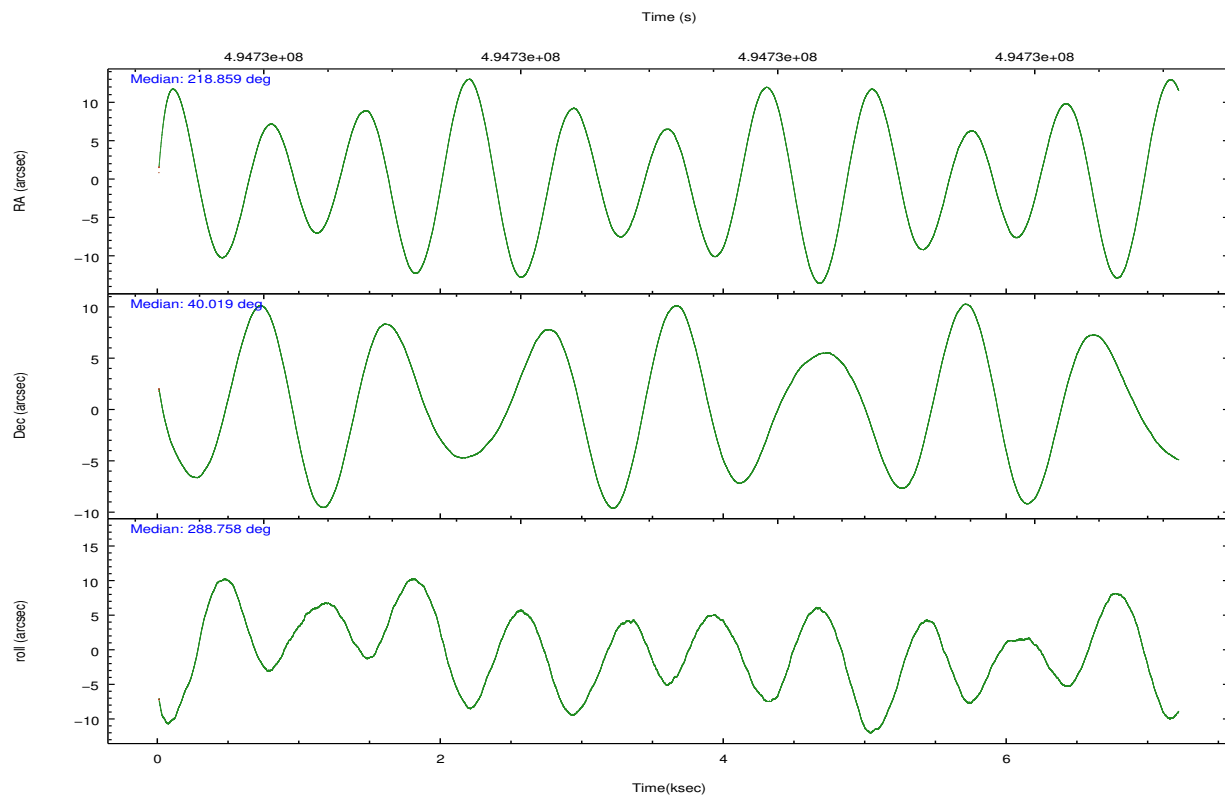
	ccd 2	ccd 3	ccd 6	ccd 7	ccd 8
grade 0 events	1192	2836	1235	1645	2924
	4%	9%	4%	4%	7%
grade 1 events	13	27	19	39	33
	0%	0%	0%	0%	0%
grade 2 events	827	721	794	3542	2484
	2%	2%	2%	10%	6%
grade 3 events	319	370	357	1421	1130
	1%	1%	1%	4%	3%
grade 4 events	360	347	370	1415	1079
	1%	1%	1%	4%	2%
grade 5 events	1132	1373	1340	3748	2064
	3%	4%	4%	10%	5%
grade 6 events	631	641	806	8326	2933
	2%	2%	2%	24%	8%
grade 7 events	24354	23899	24176	14348	23959
	84%	79%	83%	41%	65%

2.2 Compared Parameters

Parameter	Planned	Actual	Parameter	Planned	Actual
Instrument	ACIS	ACIS	Obspar format version number	7	7
Detector	ACIS-23678	ACIS-23678	Obspar file type	PREDICTED	ACTUAL
Grating	NONE	NONE	Obspar update status	NONE	UPDATED
Data mode	VFAINT	VFAINT	CCD I0 on	N	N
Observation mode	POINTING	POINTING	CCD I1 on	N	N
[deg] Pointing RA	218.832084	218.8593065877141	CCD I2 on	O1	Y
[deg] Pointing Dec	40.037071	40.01929980028989	CCD I3 on	O2	Y
[deg] Pointing Roll	288.624273	288.7633750205924	CCD S0 on	N	N
[mm] SIM focus pos	-0.684267	-0.6828225247311905	CCD S1 on	N	N
[mm] SIM defocus	0	0.001444936568705701	CCD S2 on	Y	Y
[mm] SIM translation stage pos	-190.132523	-190.1400660498719	CCD S3 on	Y	Y
[mm] SIM translation stage offset	0	0.00754346686406393	CCD S4 on	Y	Y
[s] Observation start time (MET)	494725855.184000	494724855.24816	CCD S5 on	N	N
Observation start date	2013-09-04T23:49:48	2013-09-04T23:34:15	Number of optional ACIS chips dropped	0	0
[s] Observation end time (MET)	494732755.184000	494733842.96115	On-chip summing requested	N	N
Observation end date	2013-09-05T01:44:48	2013-09-05T02:04:02	Subarray requested	NONE	NONE
Read mode	TIMED	TIMED	Alternating exposures requested	N	N
			[s] Primary exposure time	0.000000	3.1

2.3 Aspect



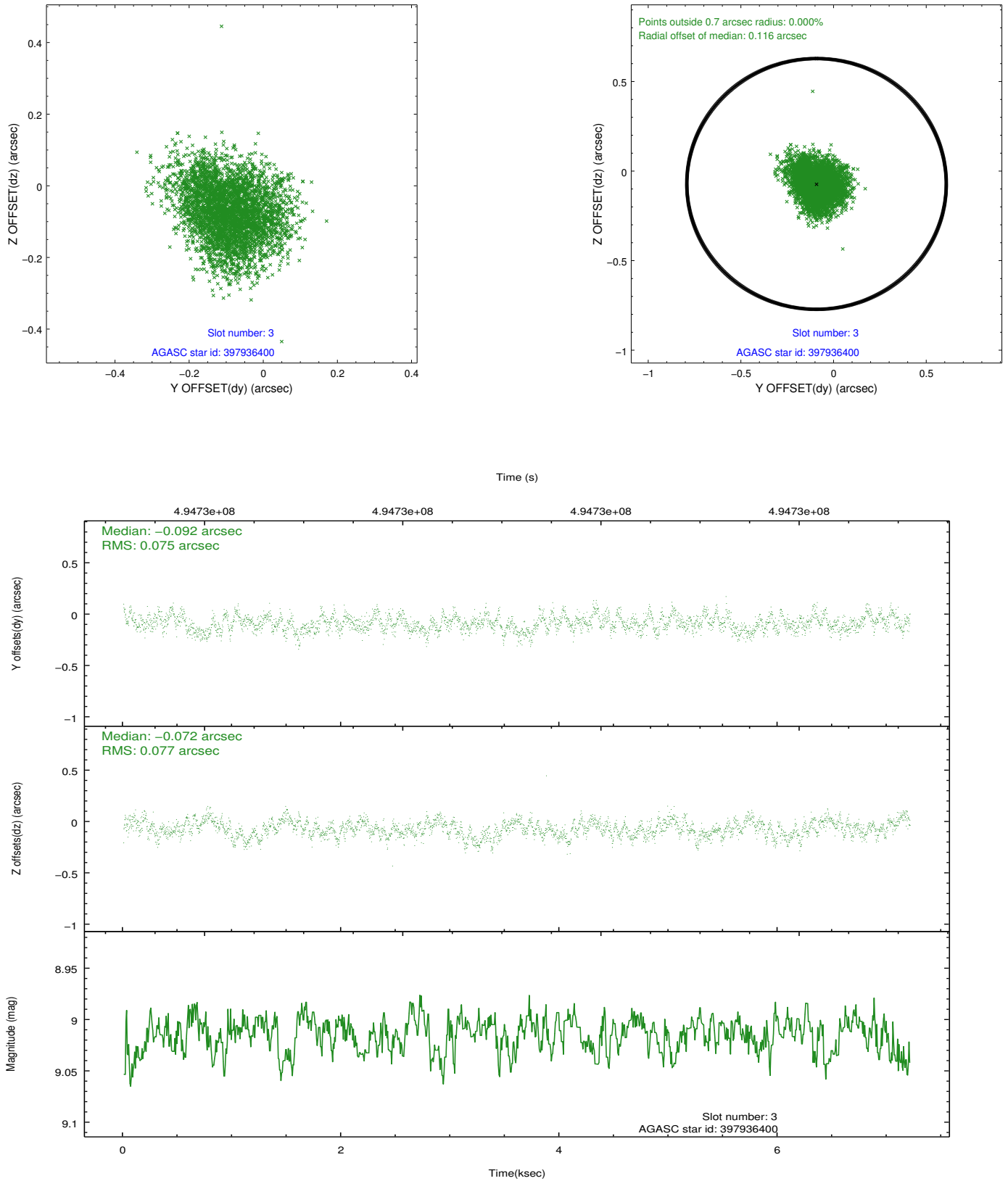


Slot Statistics

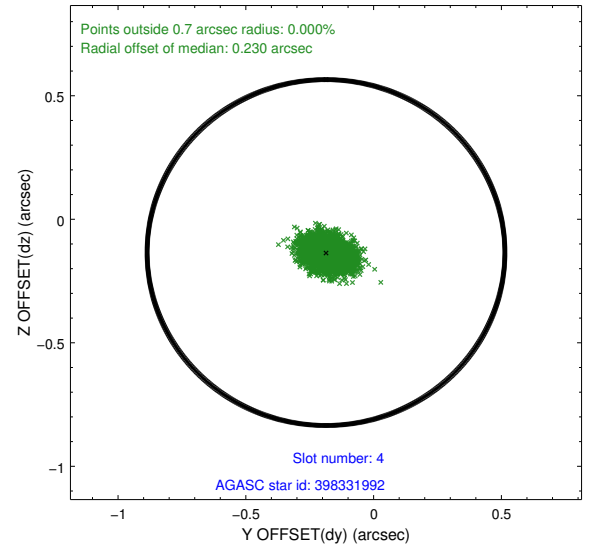
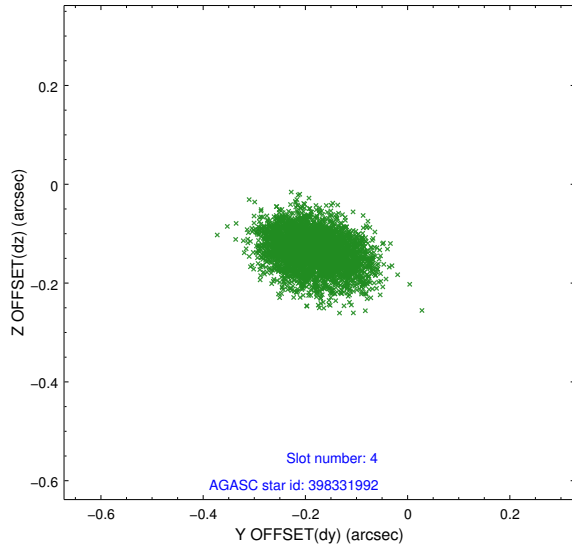
slot	status	used	id	mag	n_pts	med_dy	med_dz	dr1	dr2	ra	dec	mean_y	mean_z
0	FID		ACIS-S-2	6.93	1759	-0.152	-0.023	0.013	0.021	0.000000	0.000000	-777.06	-1741.58
1	FID		ACIS-S-4	7.02	1759	0.337	0.079	0.007	0.016	0.000000	0.000000	2136.32	166.19
2	FID		ACIS-S-5	7.04	1759	-0.216	-0.048	0.012	0.018	0.000000	0.000000	-1828.97	160.62
3	GUIDE	used	397936400	9.01	3508	-0.092	-0.072	0.115	0.181	218.699090	39.415517	2006.27	-1064.99
4	GUIDE	used	398331992	7.66	3516	-0.186	-0.135	0.070	0.111	219.049907	40.252311	-542.72	814.52
5	GUIDE	used	398332440	8.79	3516	-0.048	0.359	0.090	0.142	218.348874	40.552435	-2183.84	-658.62
6	GUIDE	used	398332664	8.74	3515	0.501	0.162	0.092	0.142	217.886680	40.371455	-1981.53	-2068.46
7	GUIDE	used	398334744	8.80	3513	-0.181	-0.321	0.086	0.135	219.519887	40.021003	652.90	1780.03

2.4 Star Slots

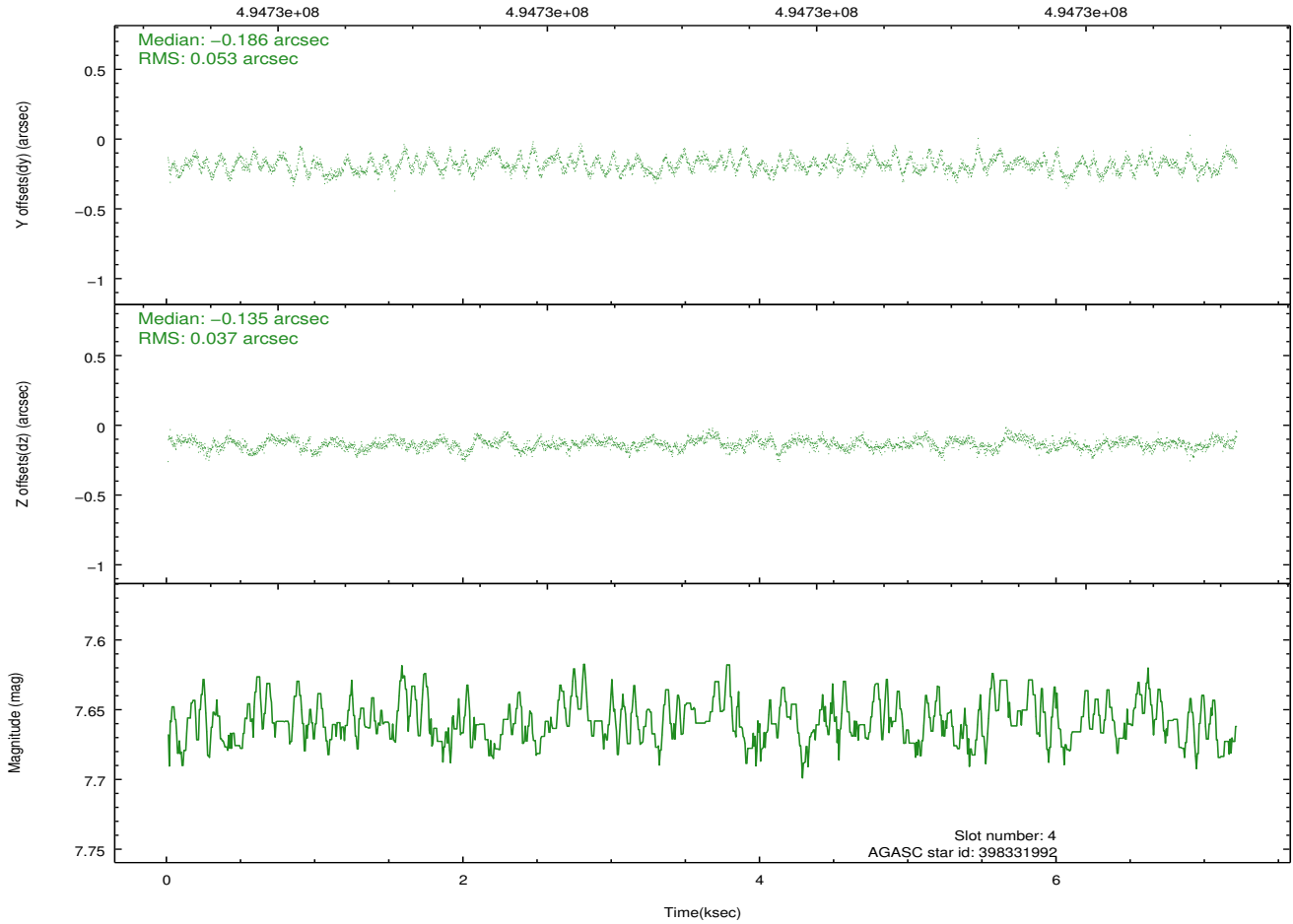
2.4.1 Slot 3



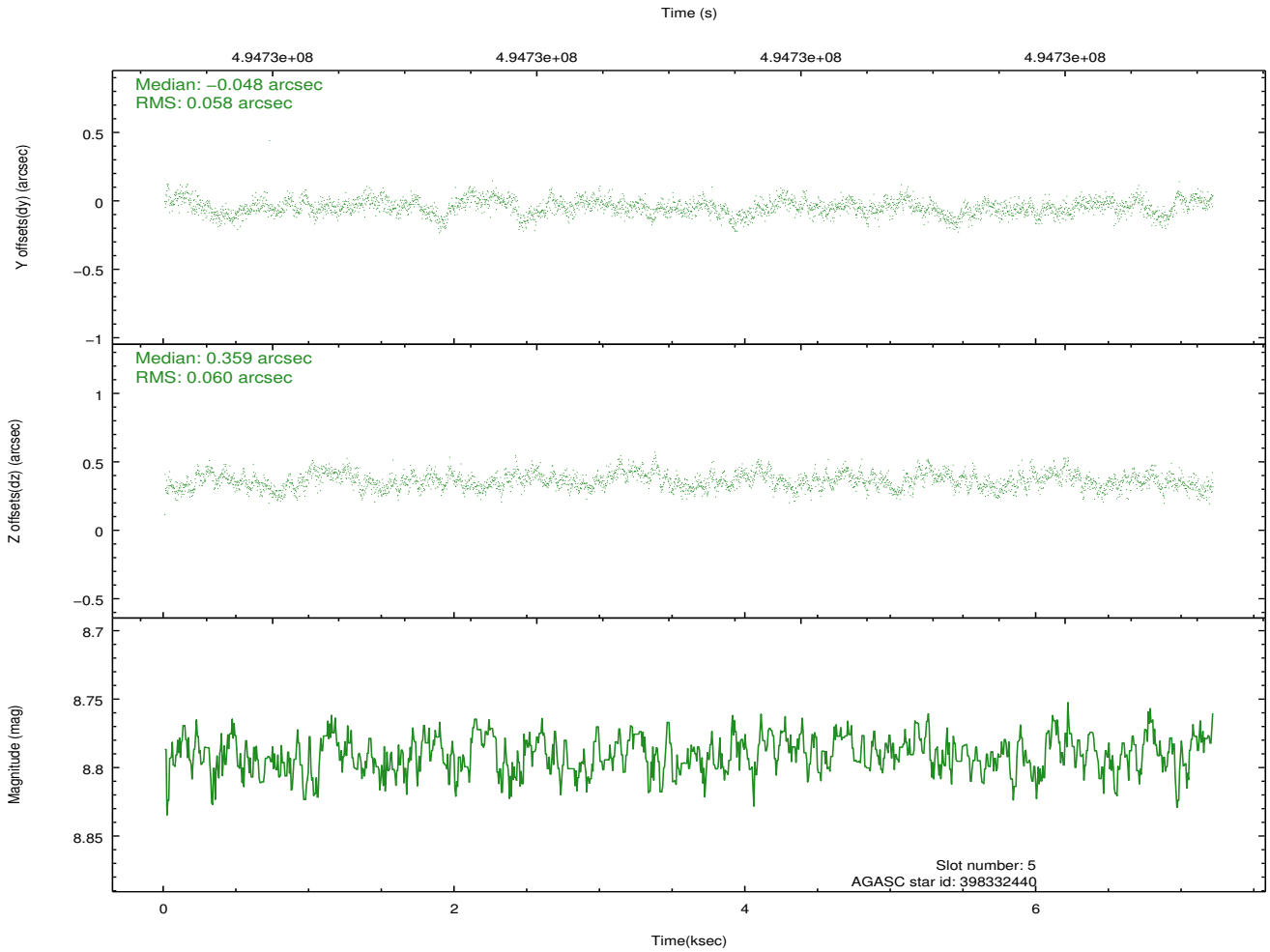
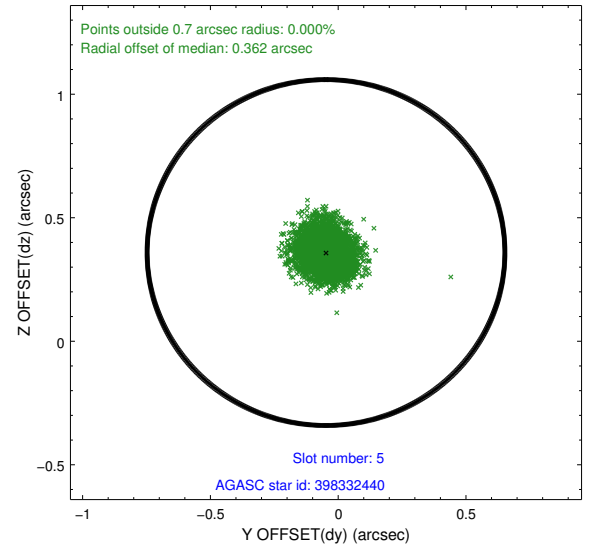
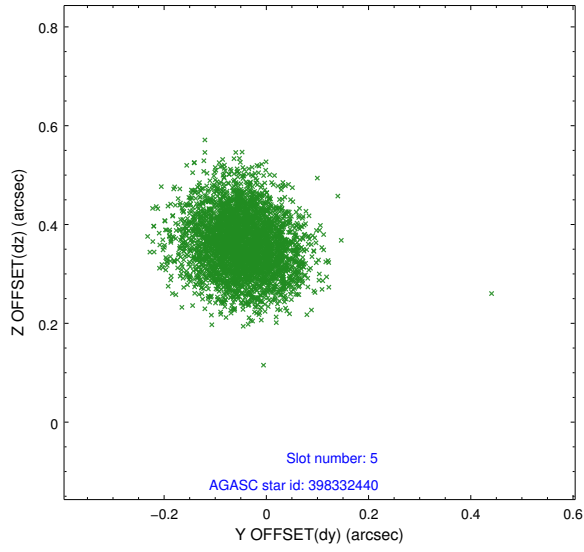
2.4.2 Slot 4



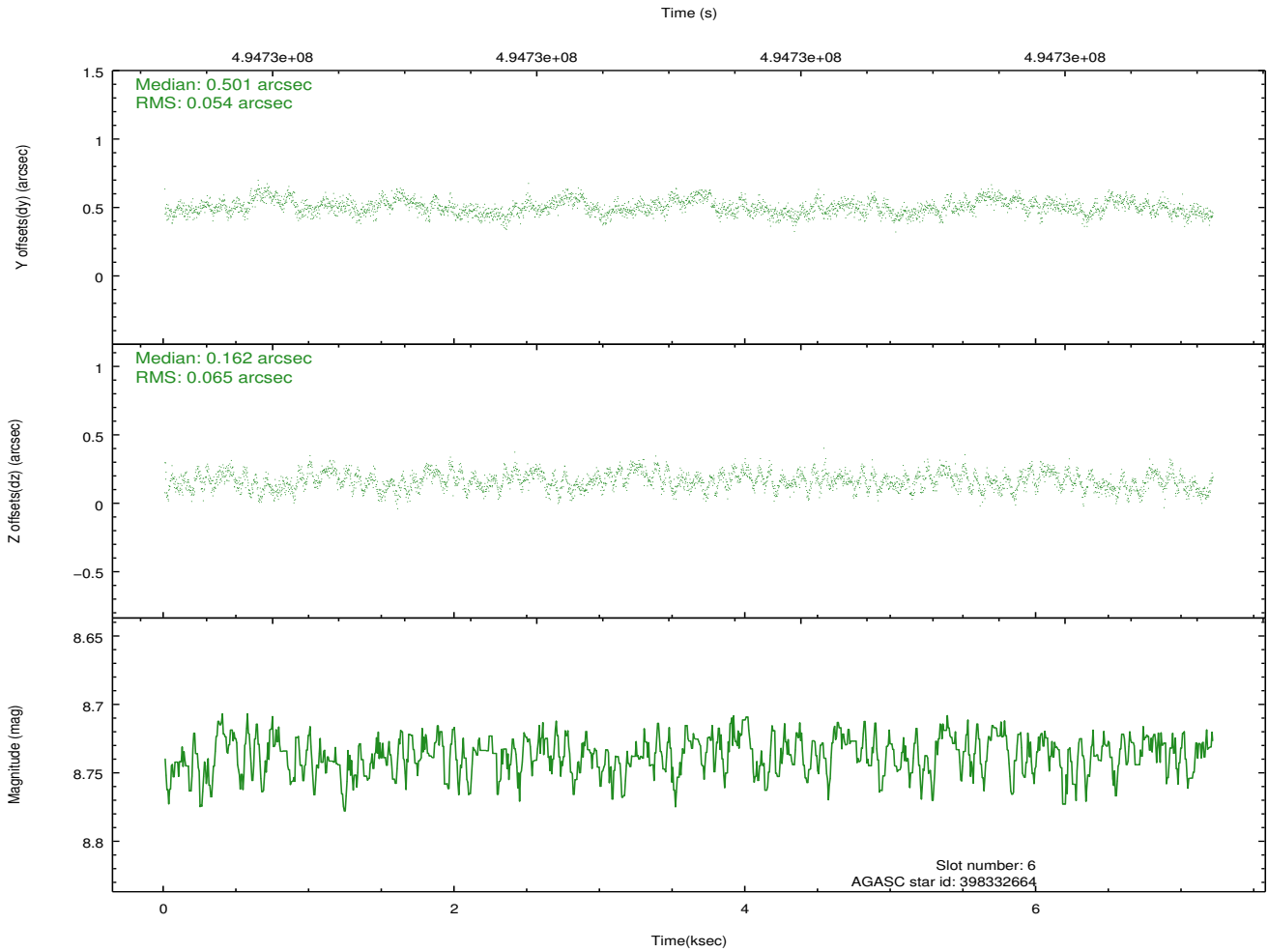
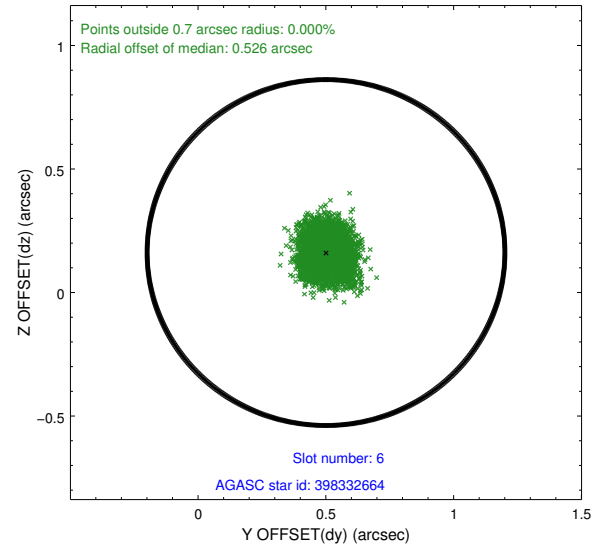
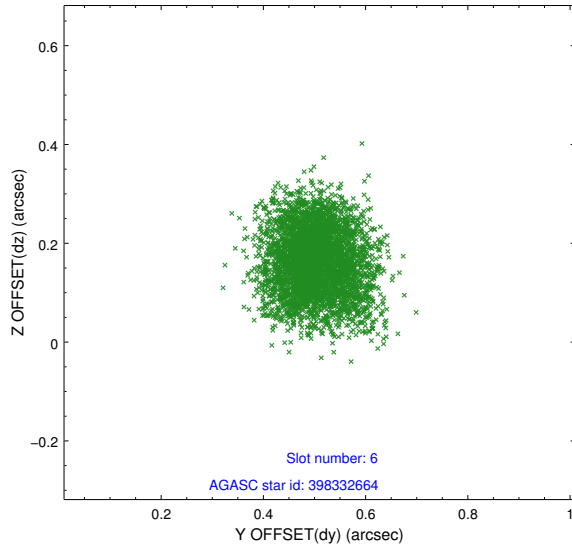
Time (s)



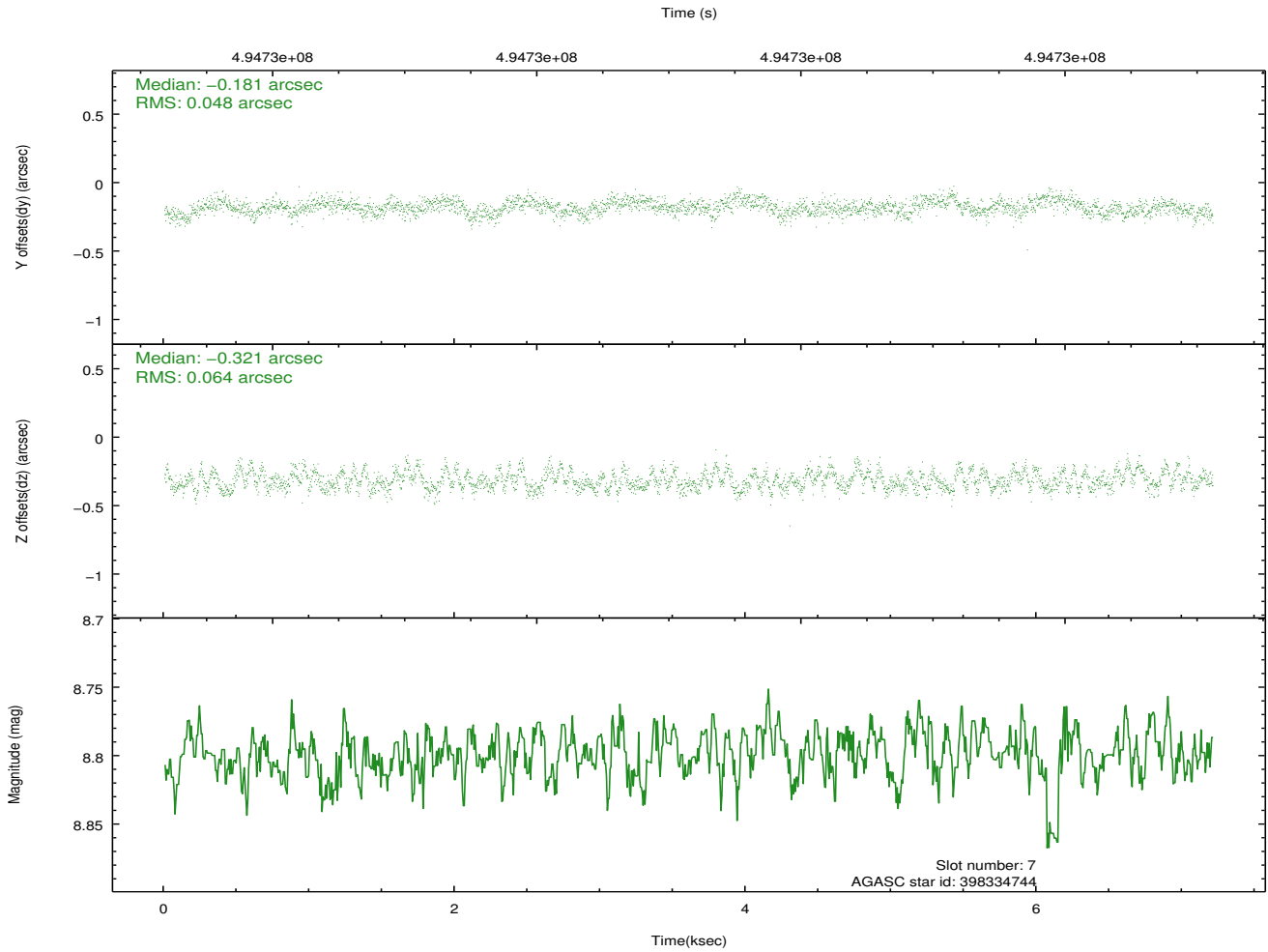
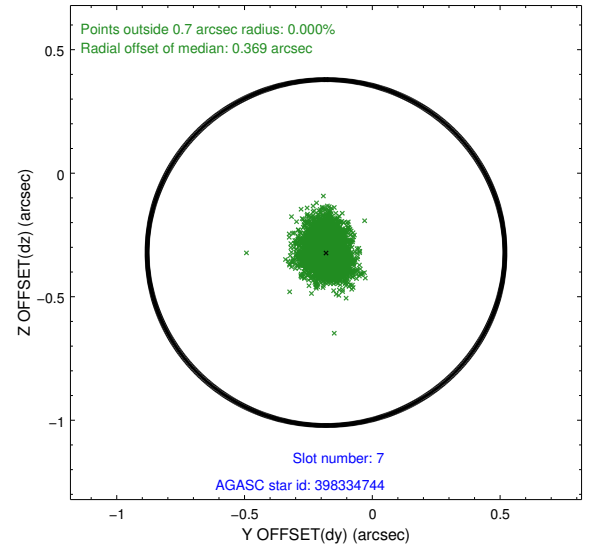
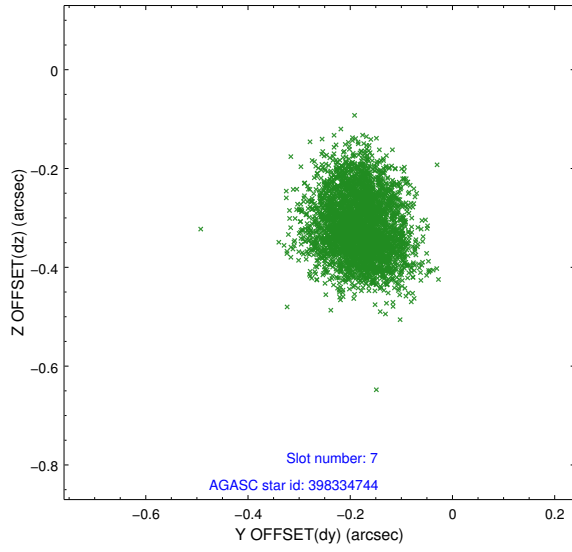
2.4.3 Slot 5



2.4.4 Slot 6

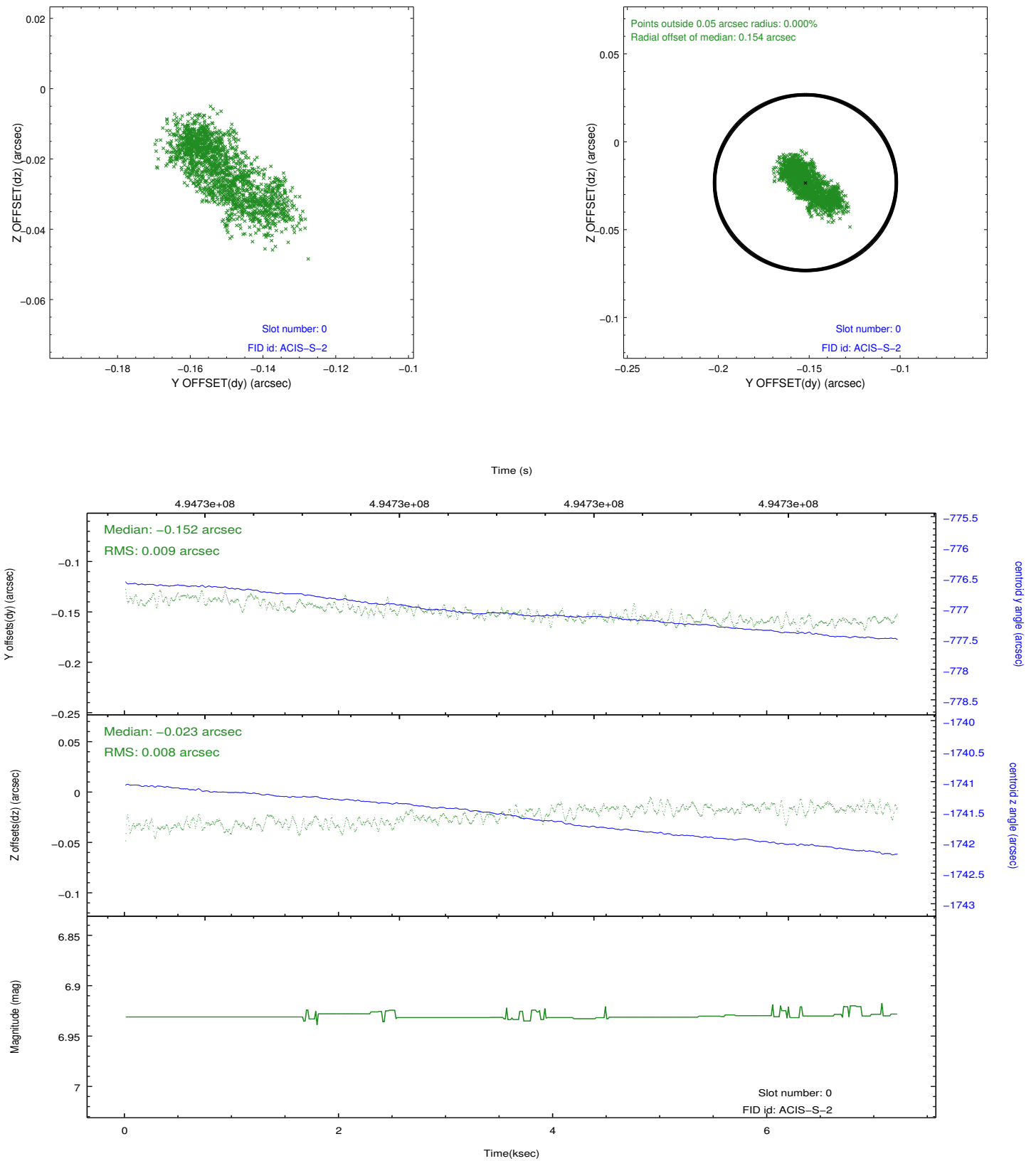


2.4.5 Slot 7

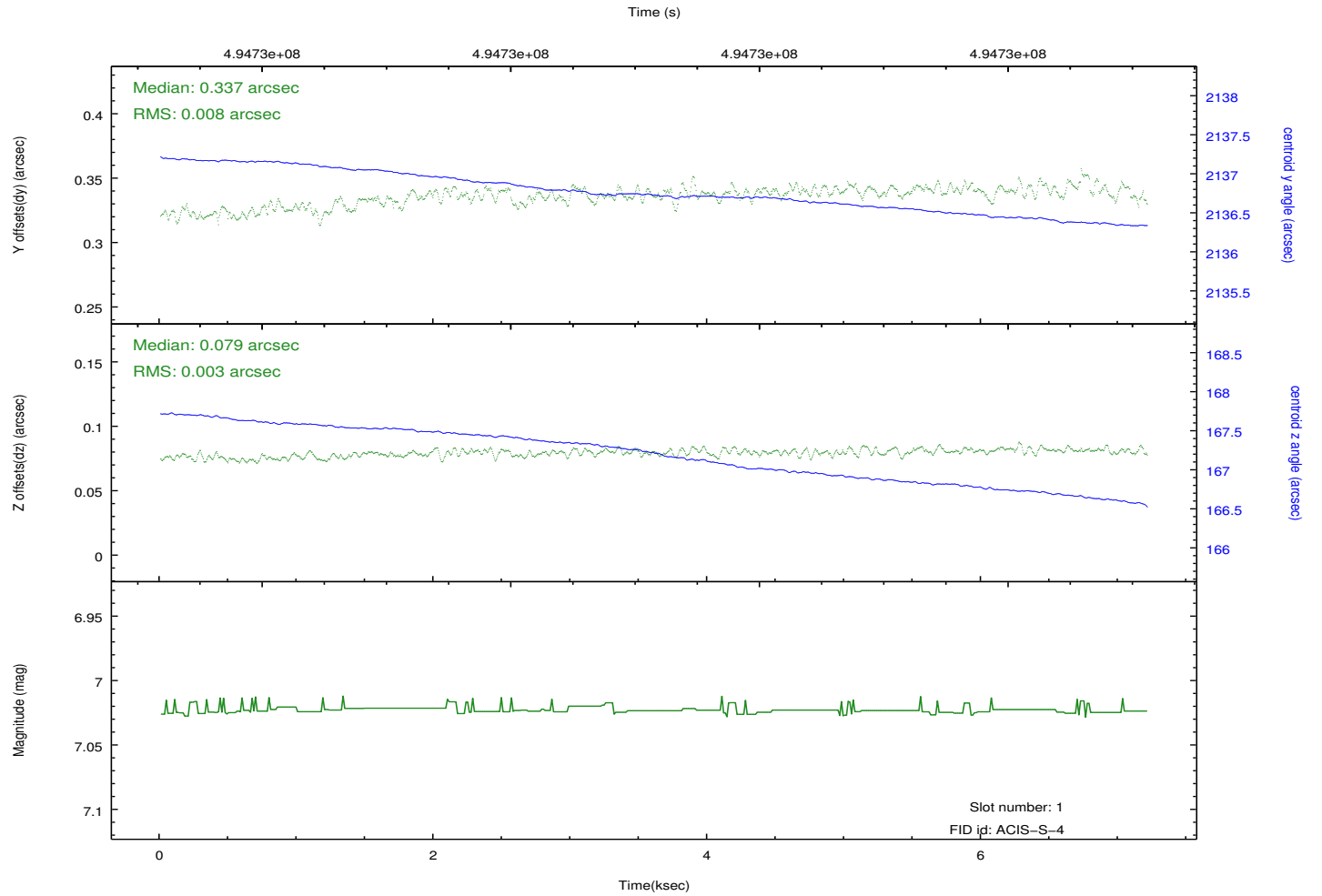
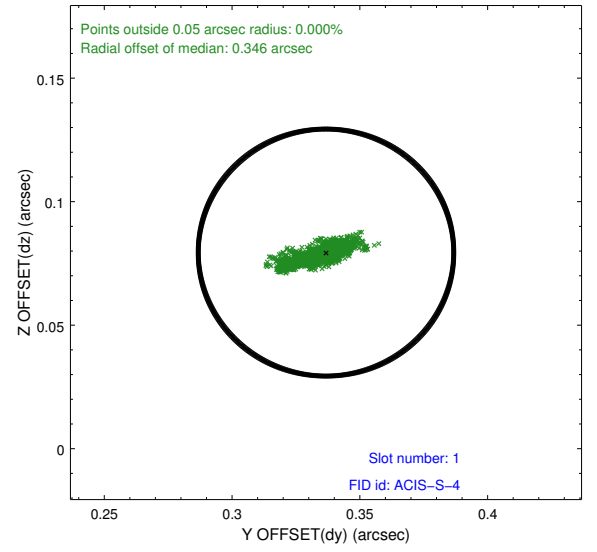
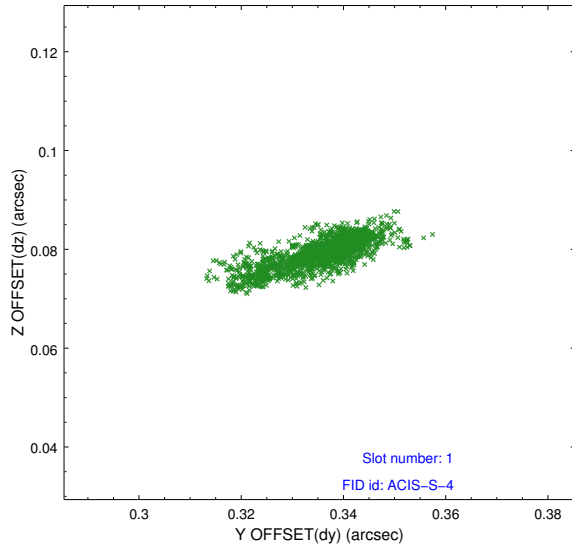


2.5 FID Slots

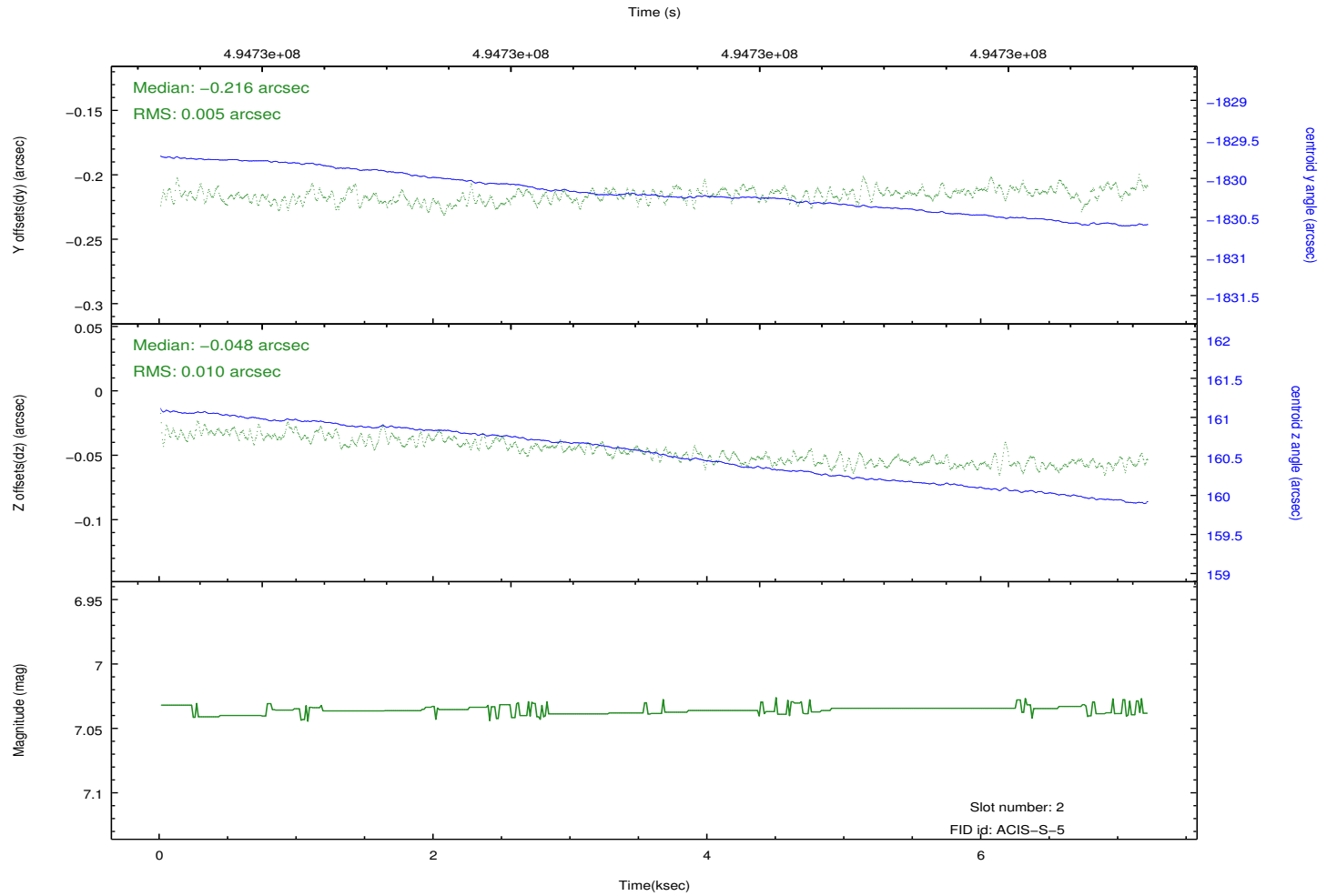
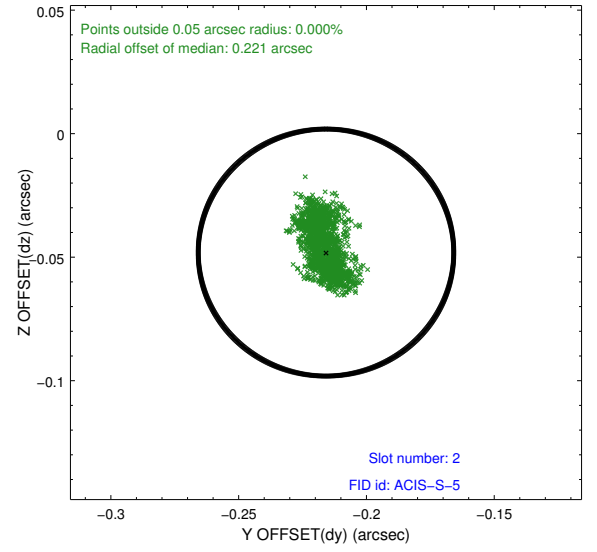
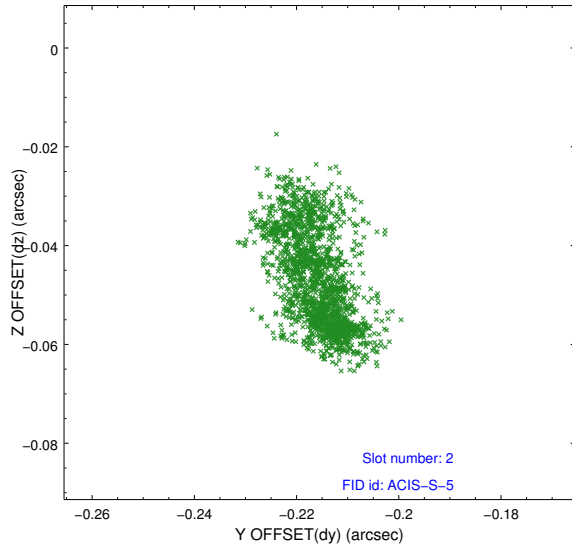
2.5.1 Slot 0



2.5.2 Slot 1



2.5.3 Slot 2



A Summary

A.1 Status

V&V Scientist	Jen Lauer
V&V Date (YYYY-MM-DD)	2014.12.12
V&V Edition	1
V&V Disposition and Status	OK
V&V Charge Time	6.9686472066641

A.2 Comments

These data have been reprocessed with new aspect alignment calibration files that correct small mean offsets (up to 0.4 arcsecs) and improve overall astrometric accuracy. The new calibration was determined using data from the time period being reprocessed and was performed using cross-correlation of X-ray sources with radio and optical counterparts.