

V&V Reference Report

L2 ASCDS Version : 8.4.5

Observation 13794 - L2 Version 1
Chandra X-Ray Center

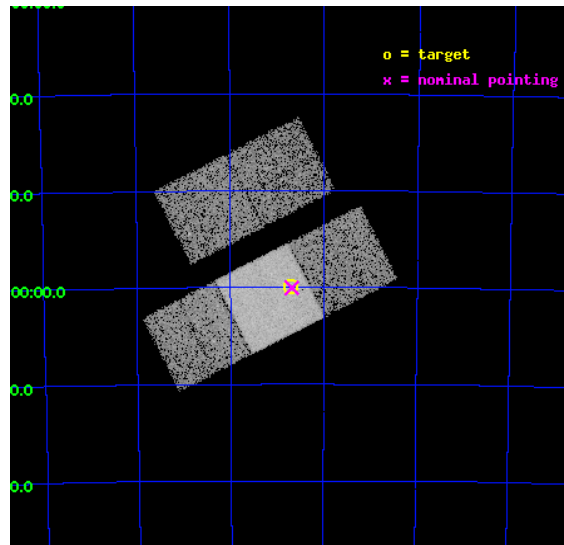
L2 Processing Date : Jul 24 2012

Contents

1	Front	2
2	OBI	3
2.1	OBI	3
2.1.1	Images	3
2.1.2	Bias	3
2.1.3	Parameters	4
2.1.4	Events	4
2.2	Compared Parameters	5
2.3	Aspect	6
2.4	Star Slots	9
2.4.1	Slot 3	9
2.4.2	Slot 4	10
2.4.3	Slot 5	11
2.4.4	Slot 6	12
2.4.5	Slot 7	13
2.5	FID Slots	14
2.5.1	Slot 0	14
2.5.2	Slot 1	15
2.5.3	Slot 2	16
A	Summary	17
A.1	Status	17
A.2	Comments	17

1 Front

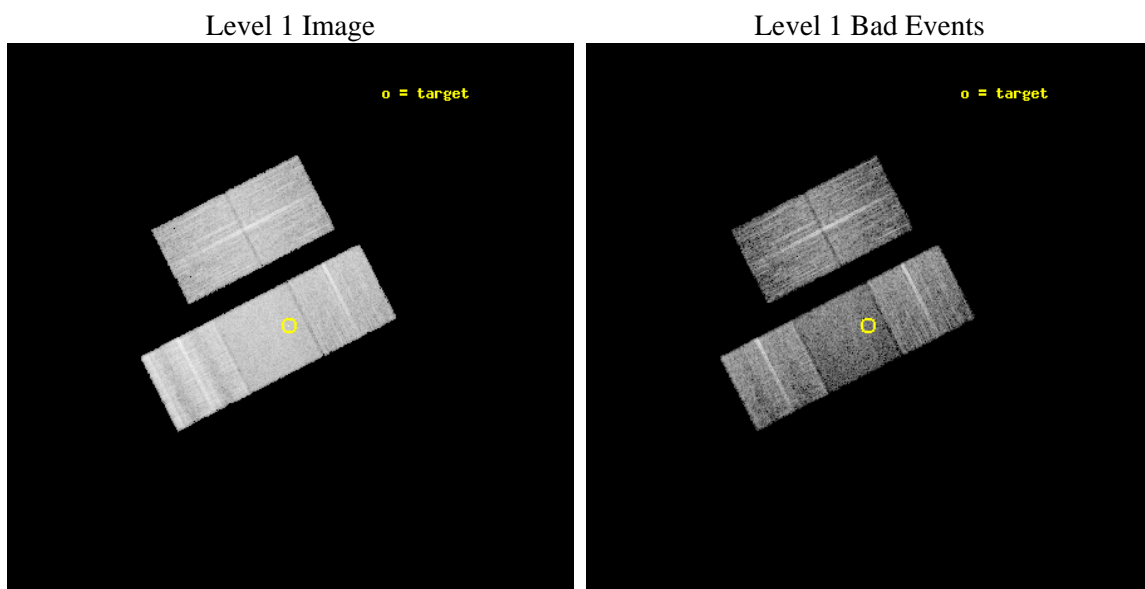
seq_num	501626	Sequence number
obs_id	13794	Observation id
title	The Astrophysics of the Most Energetic Gamma-Ray Bursts	Proposal t
observer	Dr. Andrew Fruchter	Principal investigator
object	GRB 120711A	Source name
dtcycle	0	
cycle	P	events from which exps? Prim/Second/Both
ra_targ	94.6785	Observer's specified target RA [deg]
dec_targ	-70.999111	Observer's specified target Dec [deg]
ra_nom	94.670394254316	Nominal RA [deg]
dec_nom	-71.000683022611	Nominal Dec [deg]
roll_nom	152.91991365857	Nominal Roll [deg]
revision	1	Processing version of data
ontime	10062.592306733	Sum of GTIs [s]
livetime	9931.117130273	Livetime [s]
ontime2	10062.42814672	Sum of GTIs [s]
ontime3	10062.510226727	Sum of GTIs [s]
ontime6	10062.55126673	Sum of GTIs [s]
ontime7	10062.592306733	Sum of GTIs [s]
ontime8	10062.469186723	Sum of GTIs [s]
l2events	70131	Number of level 2 events



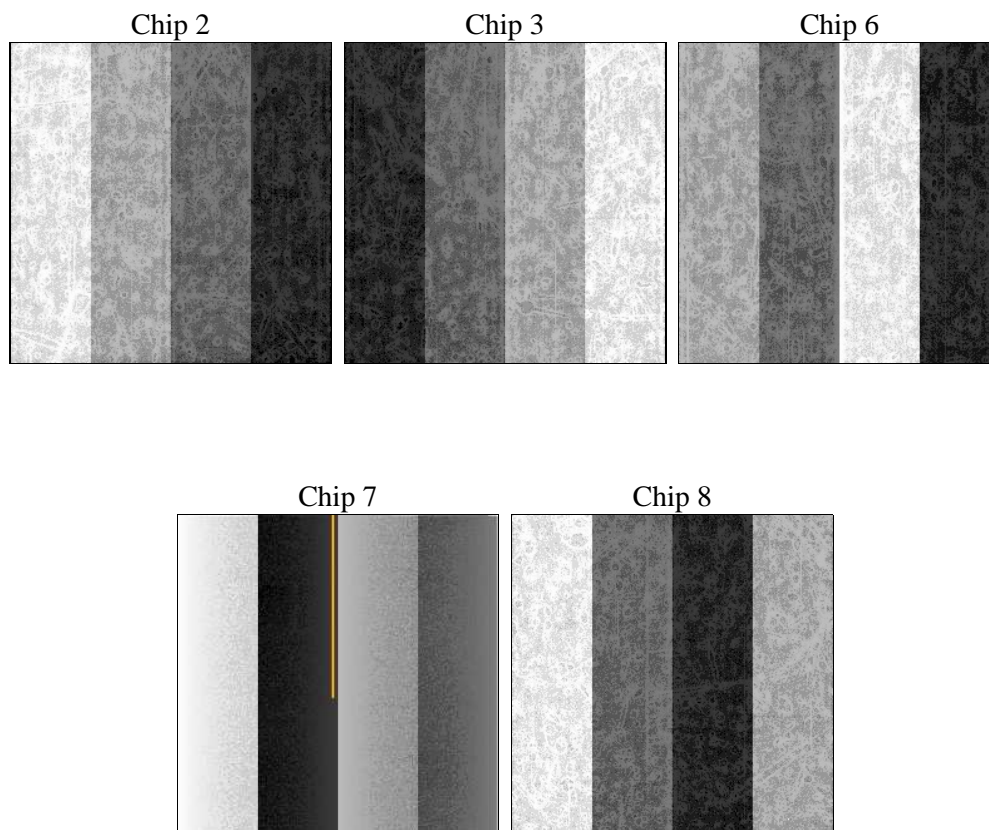
2 OBI

2.1 OBI

2.1.1 Images



2.1.2 Bias



2.1.3 Parameters

obi_num	0	Obi number	sched_exp_time	10000.000000	[s] Scheduled observation exposure time
ascdsver	8.4.5	Processing system revision	ontime	10062.592306733	Sum of GTIs [s]
caldbver	4.5.0	 	ontime2	10062.42814672	Sum of GTIs [s]
date	2012-07-24T18:51:34	Date and time of file creation	ontime3	10062.510226727	Sum of GTIs [s]
revision	1	Processing version of data	ontime6	10062.55126673	Sum of GTIs [s]
			ontime7	10062.592306733	Sum of GTIs [s]
			ontime8	10062.469186723	Sum of GTIs [s]
			l1events	385886	Number of level 1 events

2.1.4 Events

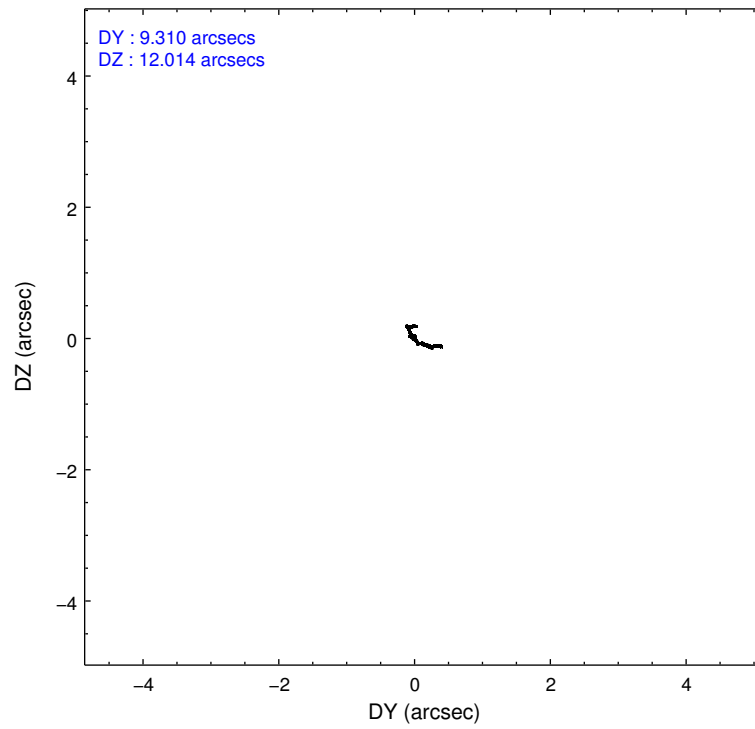
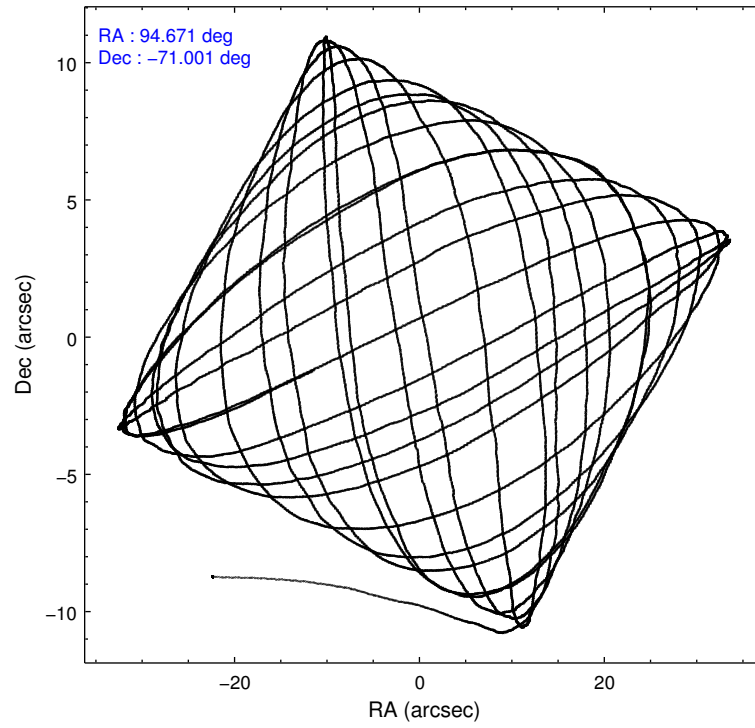
	ccd 2	ccd 3	ccd 6	ccd 7	ccd 8
level 1 events	65590	66761	69392	80424	103719
rejected events	57096	58628	60336	40110	62894
rejected %	87%	87%	86%	49%	60%

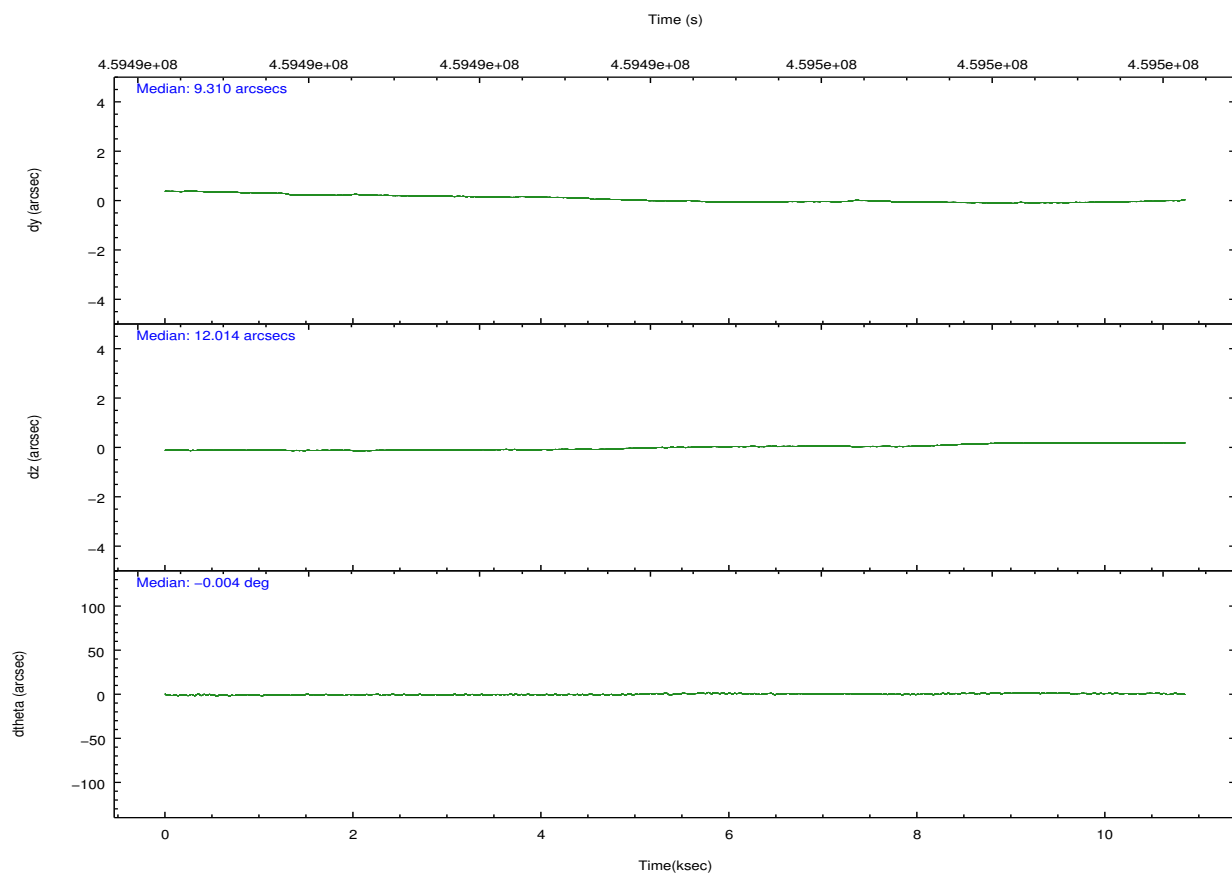
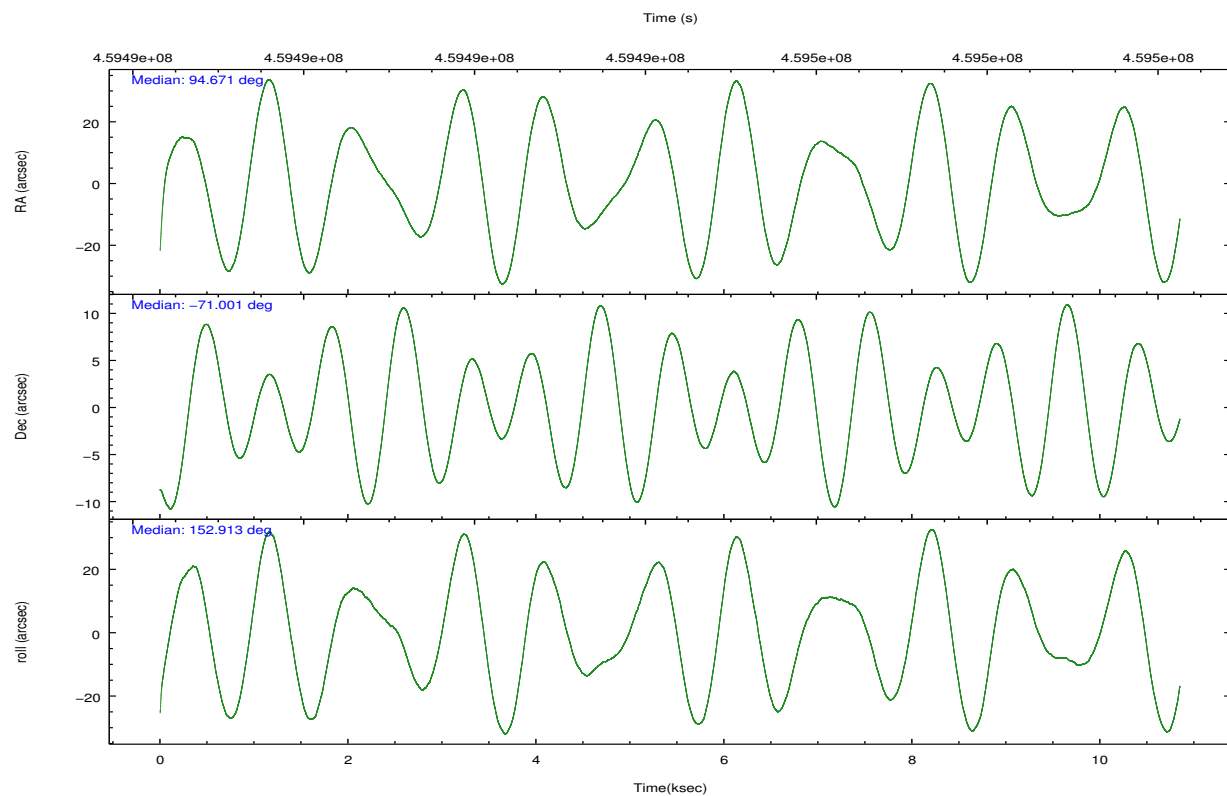
	ccd 2	ccd 3	ccd 6	ccd 7	ccd 8
grade 0 events	3525	3337	3663	4080	13654
	5%	4%	5%	5%	13%
grade 1 events	41	44	32	103	111
	0%	0%	0%	0%	0%
grade 2 events	1896	1662	1911	8805	8133
	2%	2%	2%	10%	7%
grade 3 events	812	768	802	3517	5116
	1%	1%	1%	4%	4%
grade 4 events	815	794	824	3551	4818
	1%	1%	1%	4%	4%
grade 5 events	2203	2783	2739	7470	4199
	3%	4%	3%	9%	4%
grade 6 events	1449	1576	1861	20371	9170
	2%	2%	2%	25%	8%
grade 7 events	54849	55797	57560	32527	58518
	83%	83%	82%	40%	56%

2.2 Compared Parameters

Parameter	Planned	Actual	Parameter	Planned	Actual
Instrument	ACIS	ACIS	Obspar format version number	7	7
Detector	ACIS-23678	ACIS-23678	Obspar file type	PREDICTED	ACTUAL
Grating	NONE	NONE	Obspar update status	NONE	UPDATED
Data mode	FAINT	FAINT	Number of optional ACIS chips dropped	0	0
Observation mode	POINTING	POINTING	On-chip summing requested	N	N
[deg] Pointing RA	94.754292	94.67039425431574	Subarray requested	NONE	NONE
[deg] Pointing Dec	-70.998859	-71.00068302261057	Alternating exposures requested	N	N
[deg] Pointing Roll	152.842600	152.9199136585683	[s] Primary exposure time	0.000000	3.1
[mm] SIM focus pos	-0.684267	-0.6828225247311905			
[mm] SIM defocus	0	0.001444936568705701			
[mm] SIM translation stage pos	-190.132523	-190.1400660498719			
[mm] SIM translation stage offset	0	0.00754346686406393			
[s] Observation start time (MET)	459489716.184000	459487998.87055			
Observation start date	2012-07-24T04:00:49	2012-07-24T03:33:18			
[s] Observation end time (MET)	459499716.184000	459500646.34622			
Observation end date	2012-07-24T06:47:29	2012-07-24T07:04:06			
Read mode	TIMED	TIMED			

2.3 Aspect



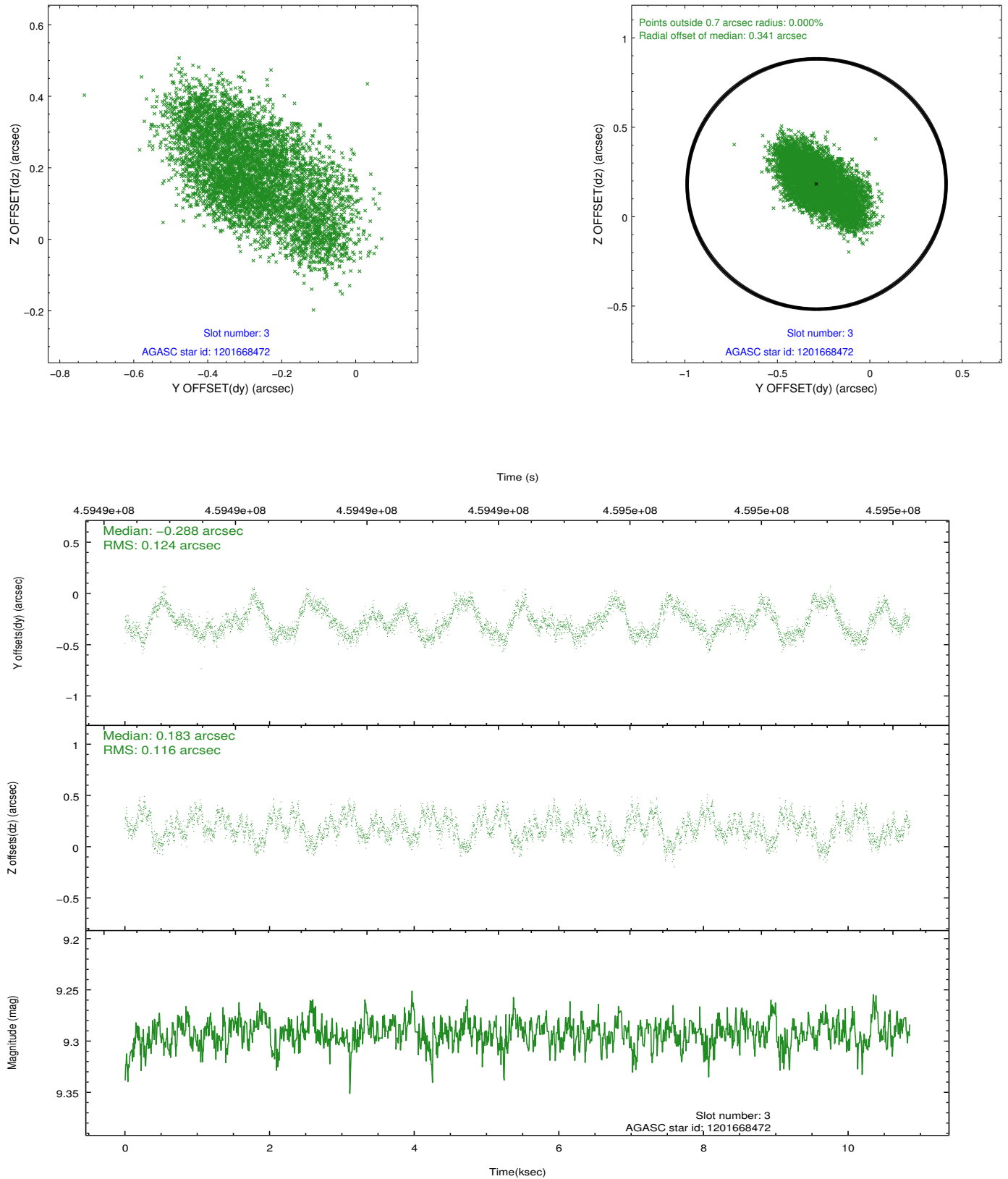


Slot Statistics

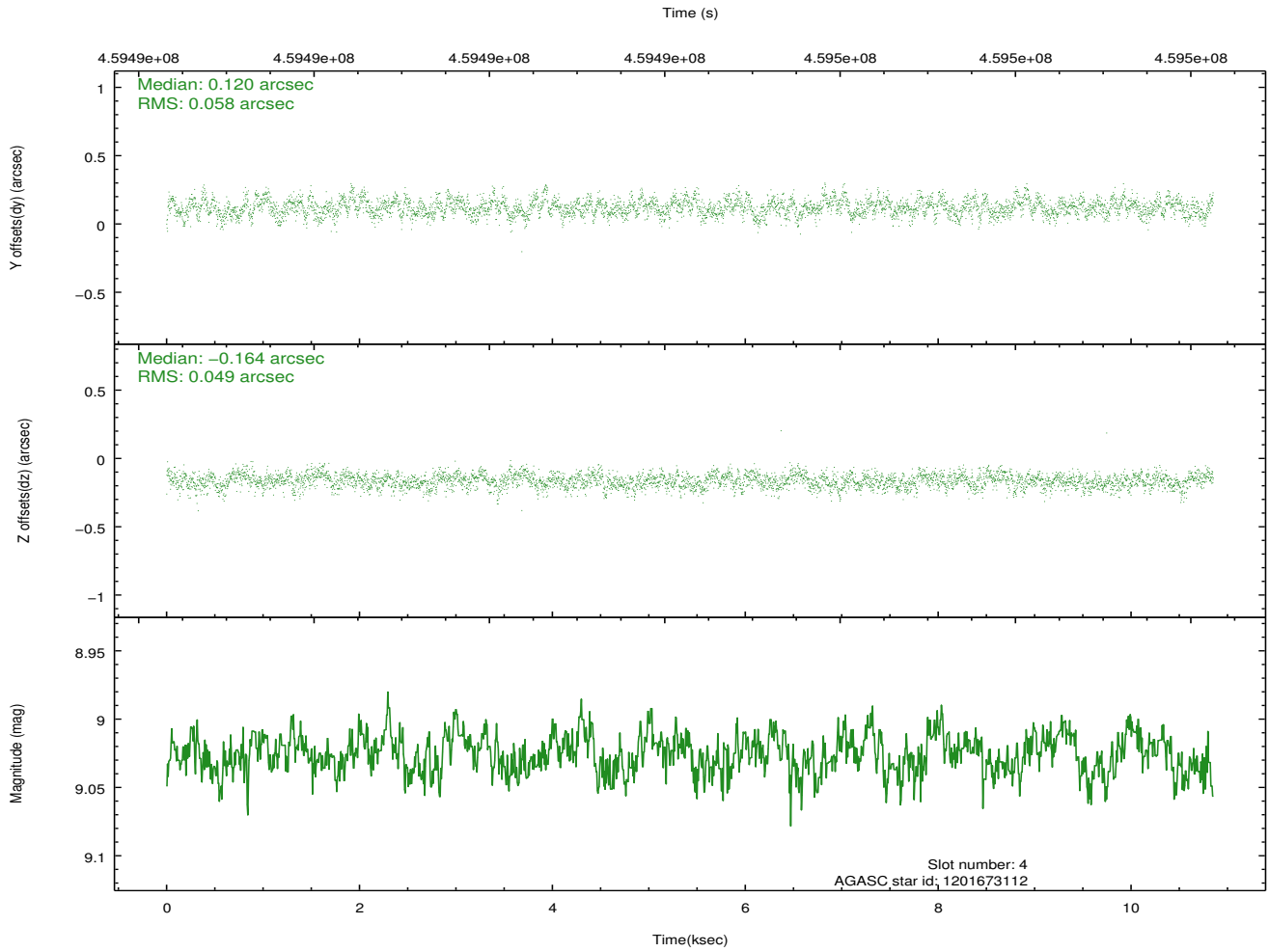
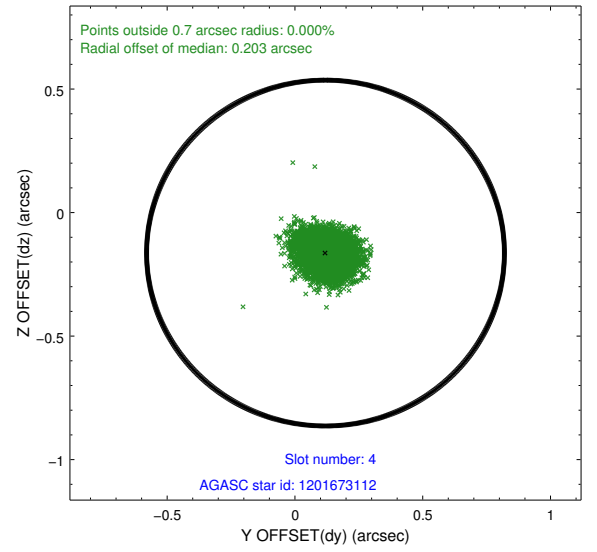
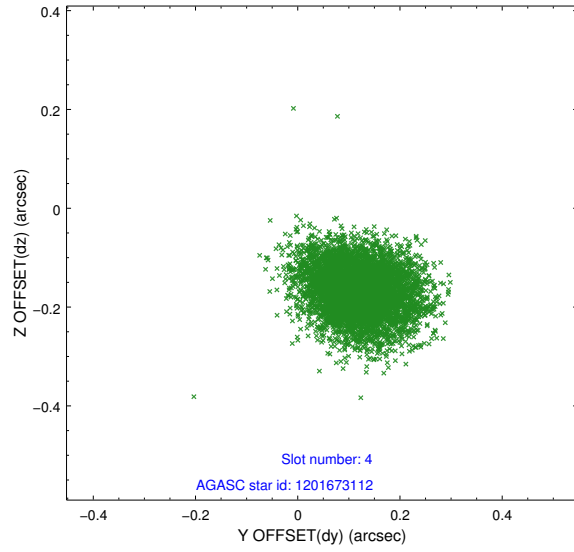
slot	status	id	mag	n_pts	med_dy	med_dz	dr1	dr2	ra	dec	mean_y	mean_z
0	FID	ACIS-S-2	6.98	2647	-0.065	-0.059	0.009	0.017	0.000000	0.000000	-762.27	-1733.37
1	FID	ACIS-S-4	7.06	2647	0.252	0.047	0.008	0.014	0.000000	0.000000	2151.12	174.71
2	FID	ACIS-S-5	7.10	2647	-0.219	0.021	0.008	0.019	0.000000	0.000000	-1814.64	168.92
3	GUIDE	1201668472	9.29	5294	-0.288	0.183	0.183	0.293	95.162780	-70.551287	299.31	-1655.45
4	GUIDE	1201673112	9.03	5291	0.120	-0.164	0.080	0.131	93.755729	-70.460525	1950.48	-1167.07
5	GUIDE	1201677552	9.37	5289	-0.062	0.240	0.105	0.169	93.710140	-70.598114	1764.07	-703.08
6	GUIDE	1202196672	9.93	5286	-0.139	-0.102	0.200	0.316	95.400512	-71.763322	-1905.48	2119.41
7	GUIDE	1202196968	9.18	5292	0.358	-0.174	0.094	0.155	94.954850	-71.380799	-832.68	1118.64

2.4 Star Slots

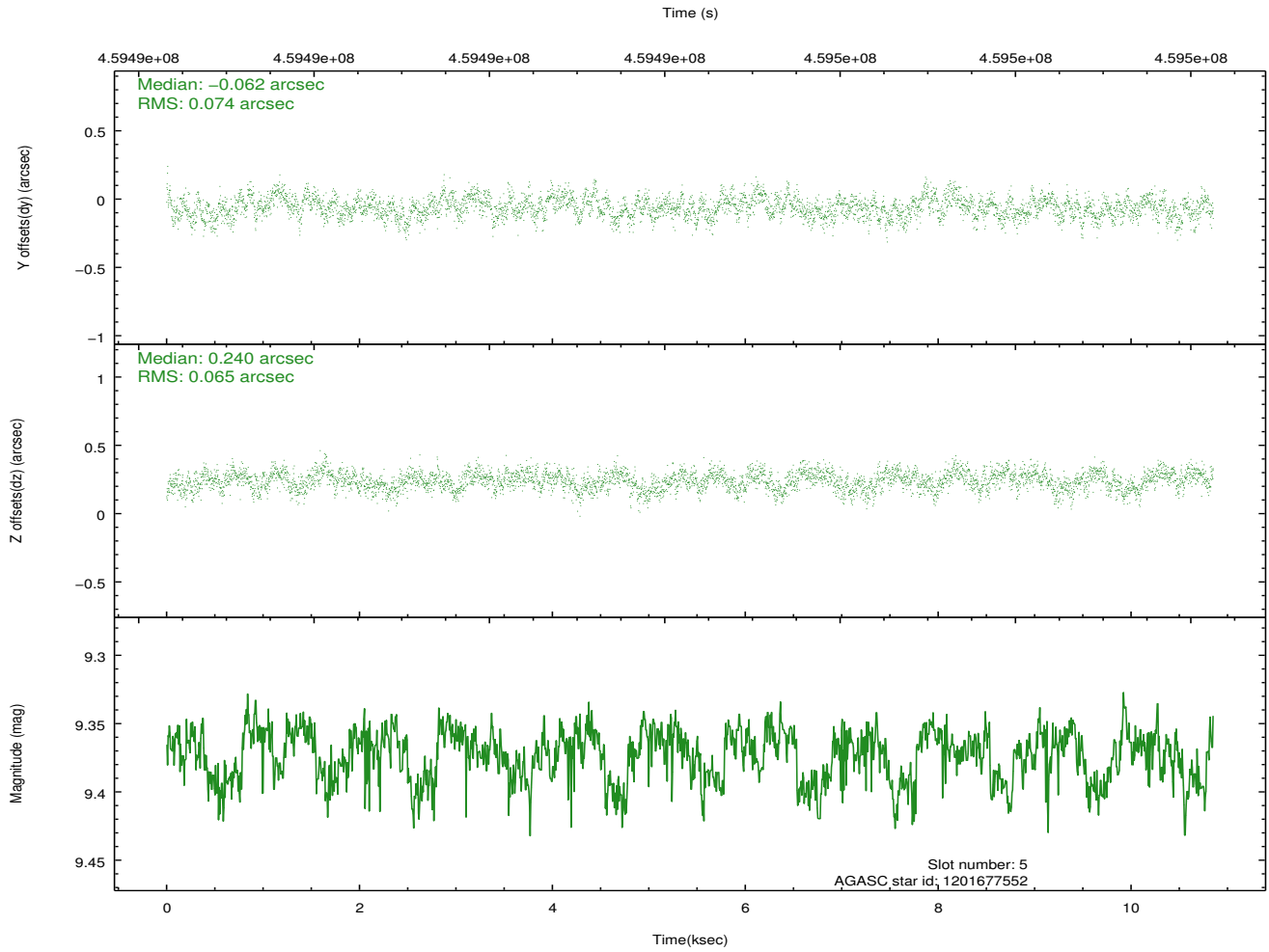
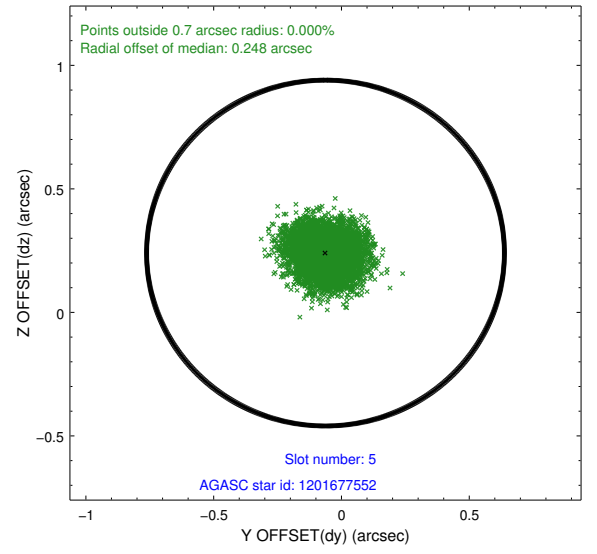
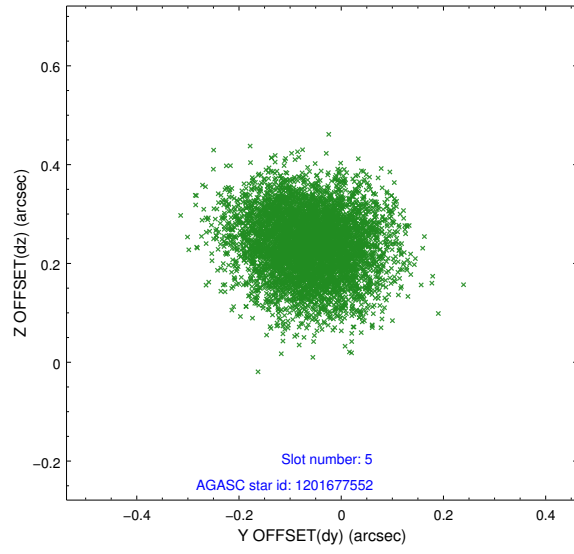
2.4.1 Slot 3



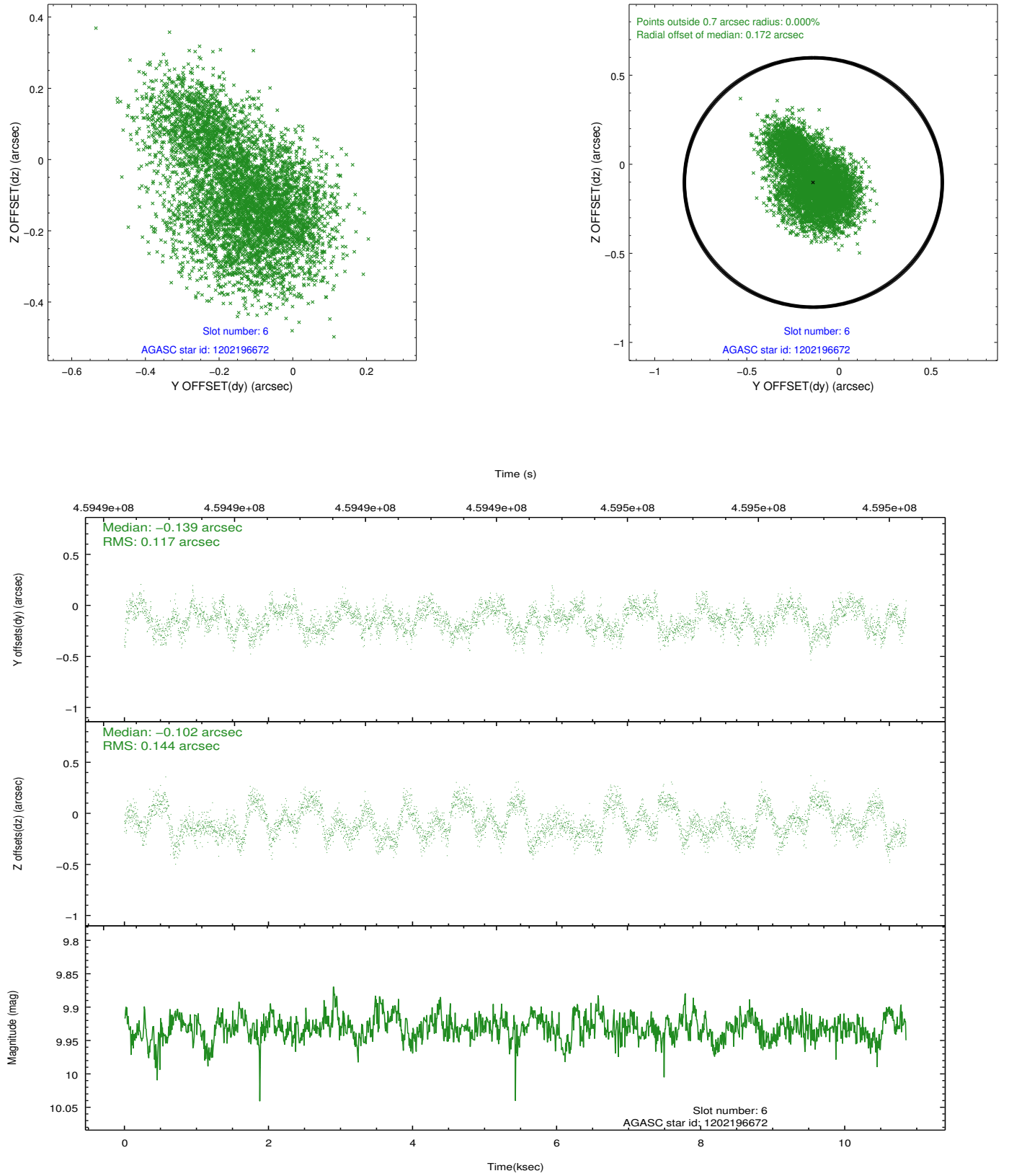
2.4.2 Slot 4



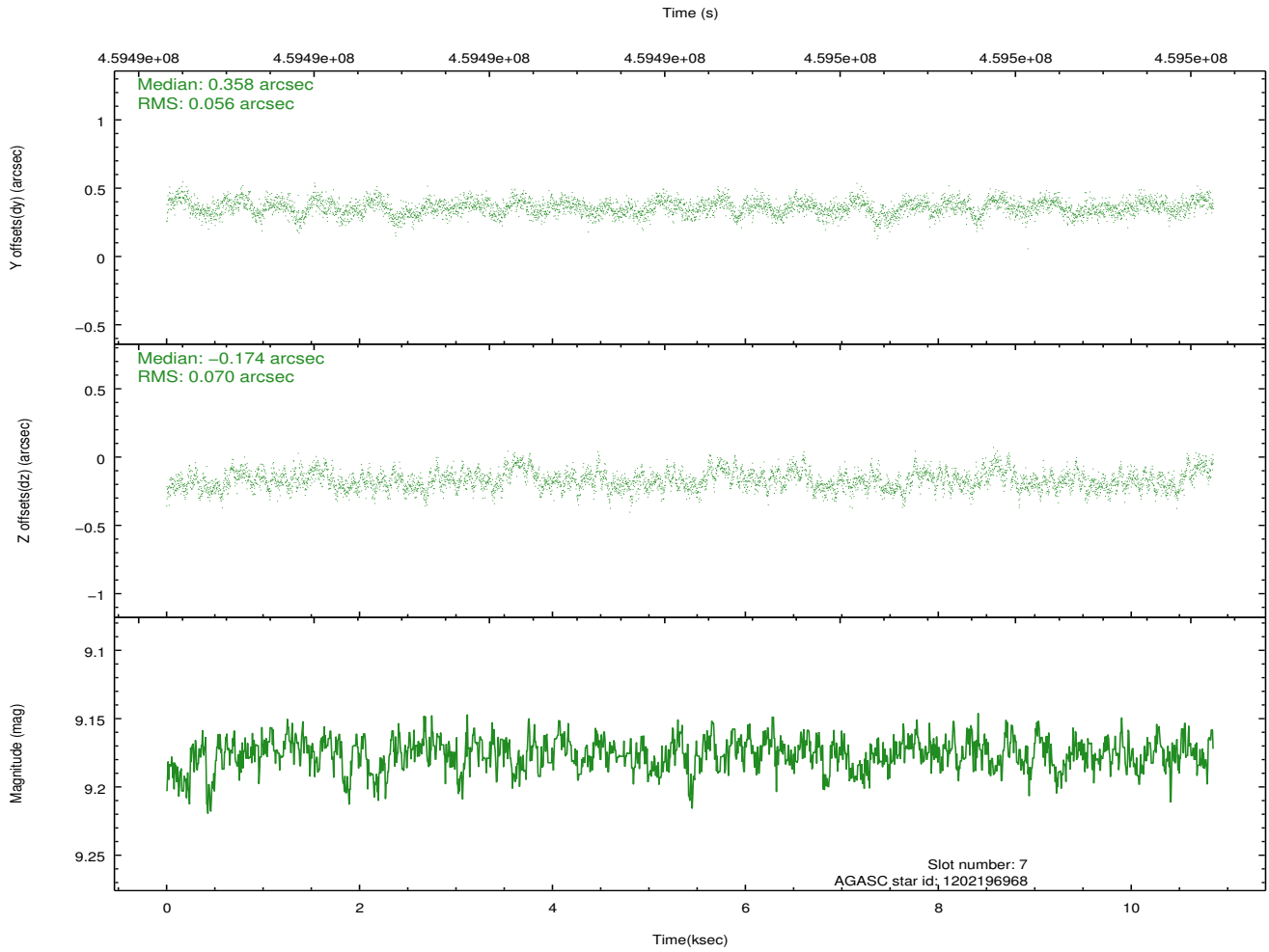
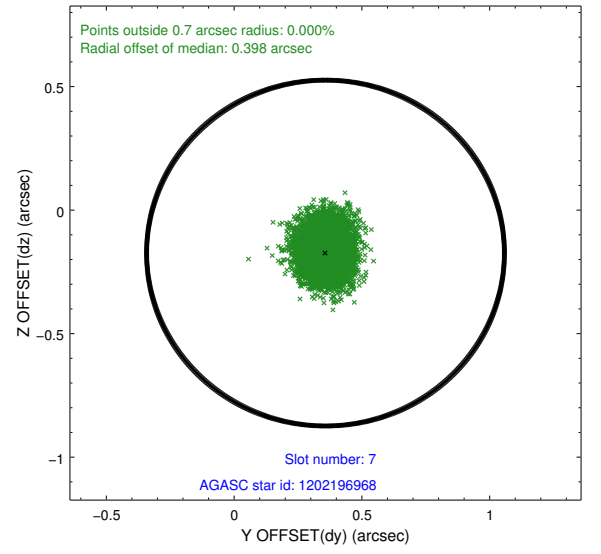
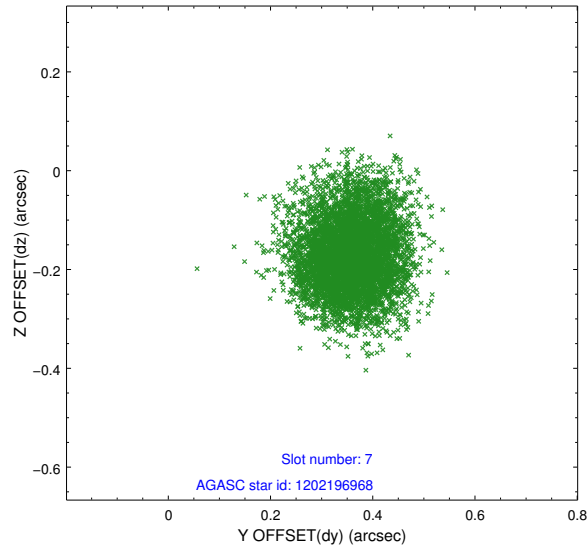
2.4.3 Slot 5



2.4.4 Slot 6

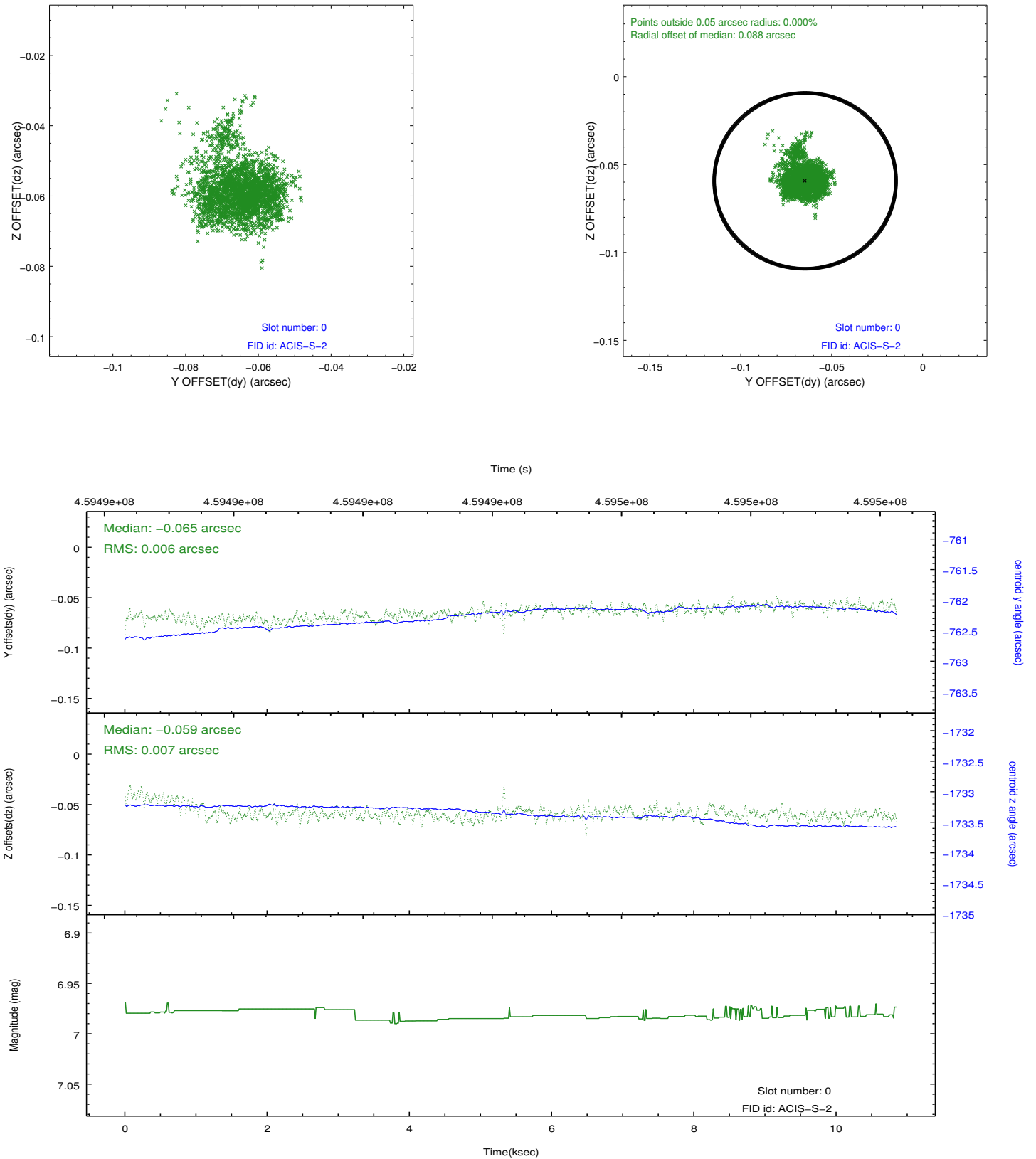


2.4.5 Slot 7

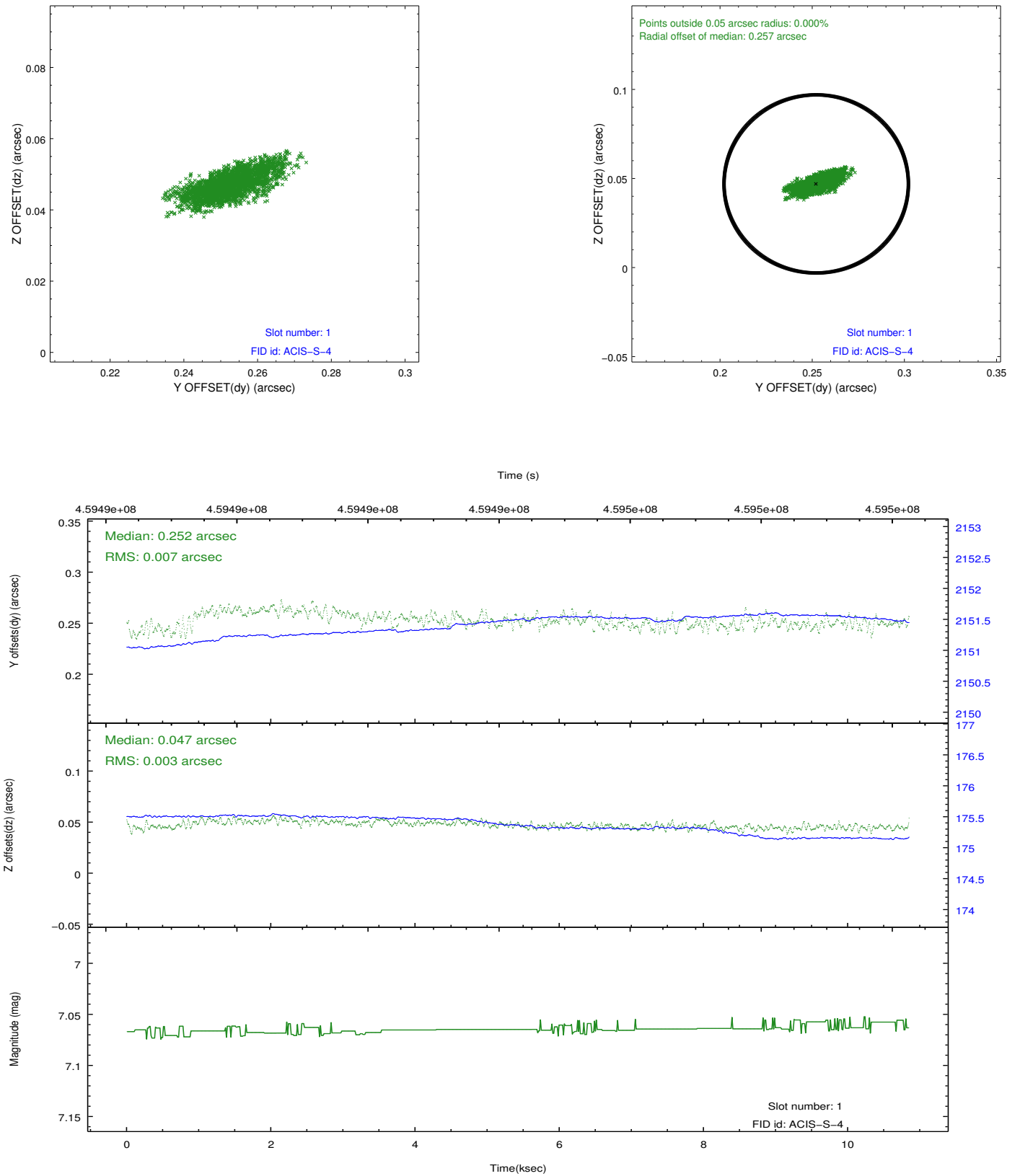


2.5 FID Slots

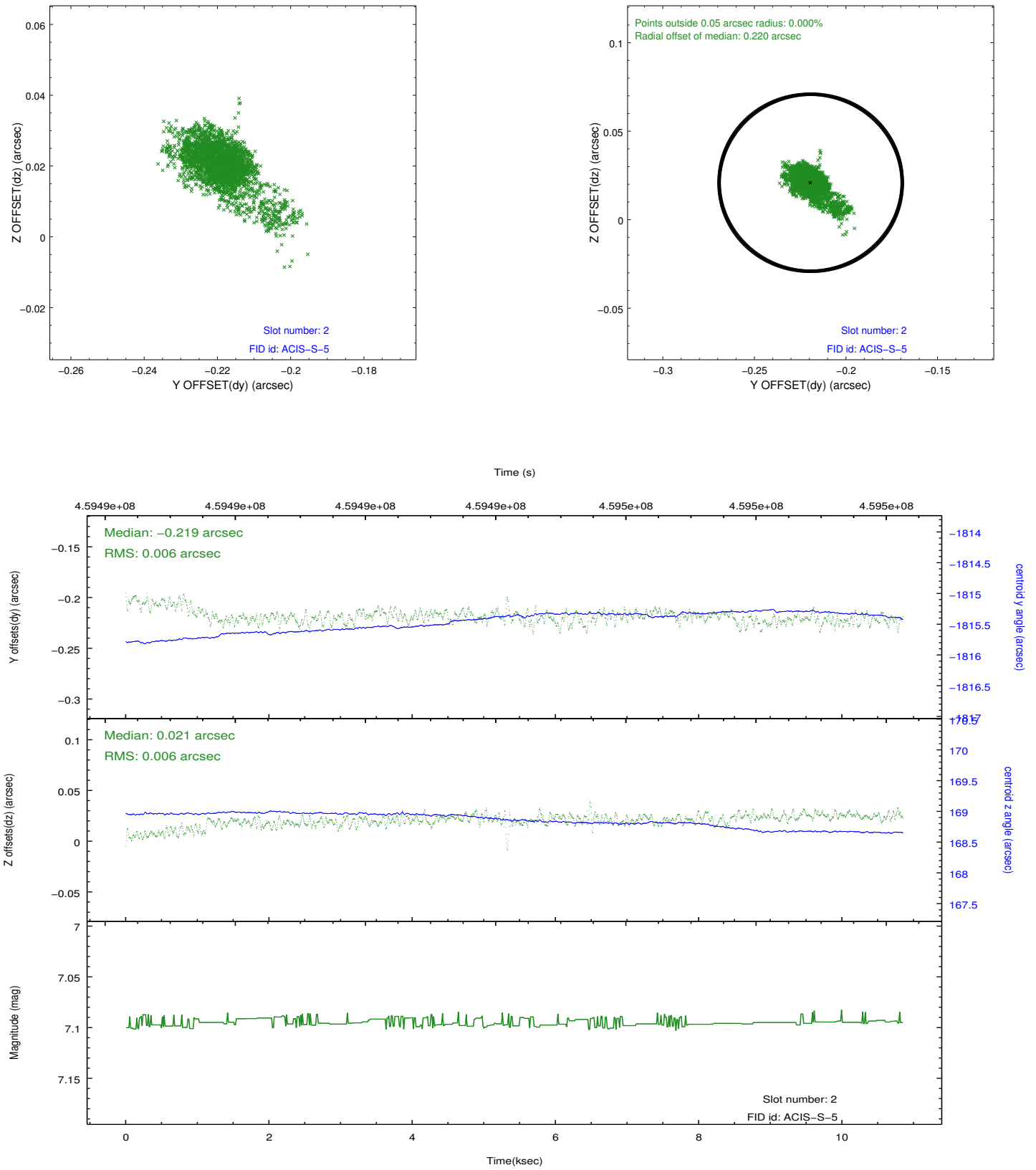
2.5.1 Slot 0



2.5.2 Slot 1



2.5.3 Slot 2



A Summary

A.1 Status

V&V Scientist	Beth Sundheim
V&V Date (YYYY-MM-DD)	2012.07.24
V&V Edition	1
V&V Disposition and Status	OK
V&V Charge Time	10.062592306733

A.2 Comments

Joint proposal with HST.