

V&V Reference Report

L2 ASCDS Version : 8.4.3

Observation 12764 - L2 Version 2
Chandra X-Ray Center

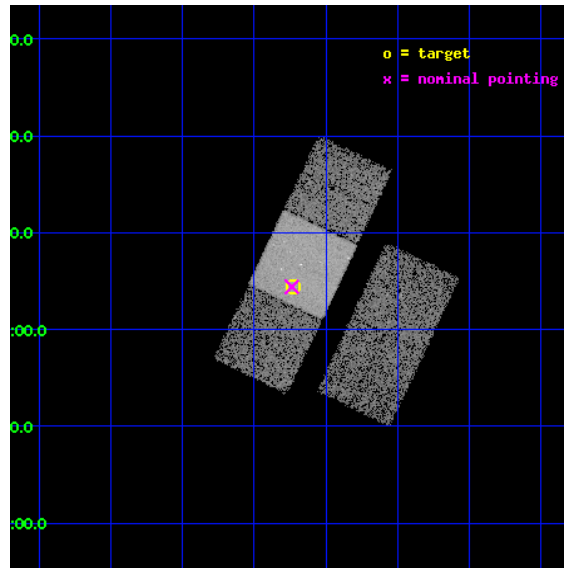
L2 Processing Date : Feb 27 2012

Contents

1	Front	2
2	OBI	3
2.1	OBI	3
2.1.1	Images	3
2.1.2	Bias	3
2.1.3	Parameters	4
2.1.4	Events	4
2.2	Compared Parameters	5
2.3	Aspect	6
2.4	Star Slots	9
2.4.1	Slot 3	9
2.4.2	Slot 4	10
2.4.3	Slot 5	11
2.4.4	Slot 6	12
2.4.5	Slot 7	13
2.5	FID Slots	14
2.5.1	Slot 0	14
2.5.2	Slot 1	15
2.5.3	Slot 2	16
A	Summary	17
A.1	Status	17
A.2	Comments	17

1 Front

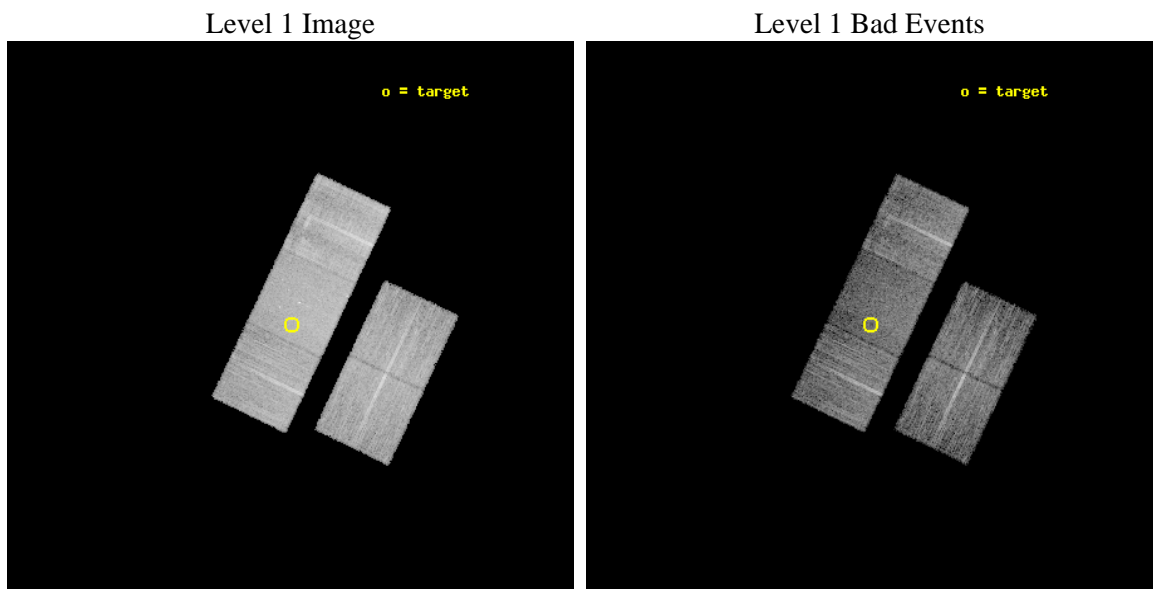
seq_num	702400	Sequence number
obs_id	12764	Observation id
title	X-ray Properties of 2MASS Selected BALQSOs	Proposal title
observer	Dr. Xinyu Dai	Principal investigator
object	SDSSJ004613.54+010425.7	Source name
dtcycle	0	
cycle	P	events from which exps? Prim/Second/Both
ra_targ	11.55625	Observer's specified target RA [deg]
dec_targ	1.073806	Observer's specified target Dec [deg]
ra_nom	11.559293267367	Nominal RA [deg]
dec_nom	1.0733866319372	Nominal Dec [deg]
roll_nom	295.43784270972	Nominal Roll [deg]
revision	2	Processing version of data
ontime	11242.840800881	Sum of GTIs [s]
livetime	11095.944808959	Livetime [s]
ontime2	11242.676640868	Sum of GTIs [s]
ontime3	11242.758720875	Sum of GTIs [s]
ontime6	11239.658720493	Sum of GTIs [s]
ontime7	11242.840800881	Sum of GTIs [s]
ontime8	11239.57665056	Sum of GTIs [s]
l2events	68337	Number of level 2 events



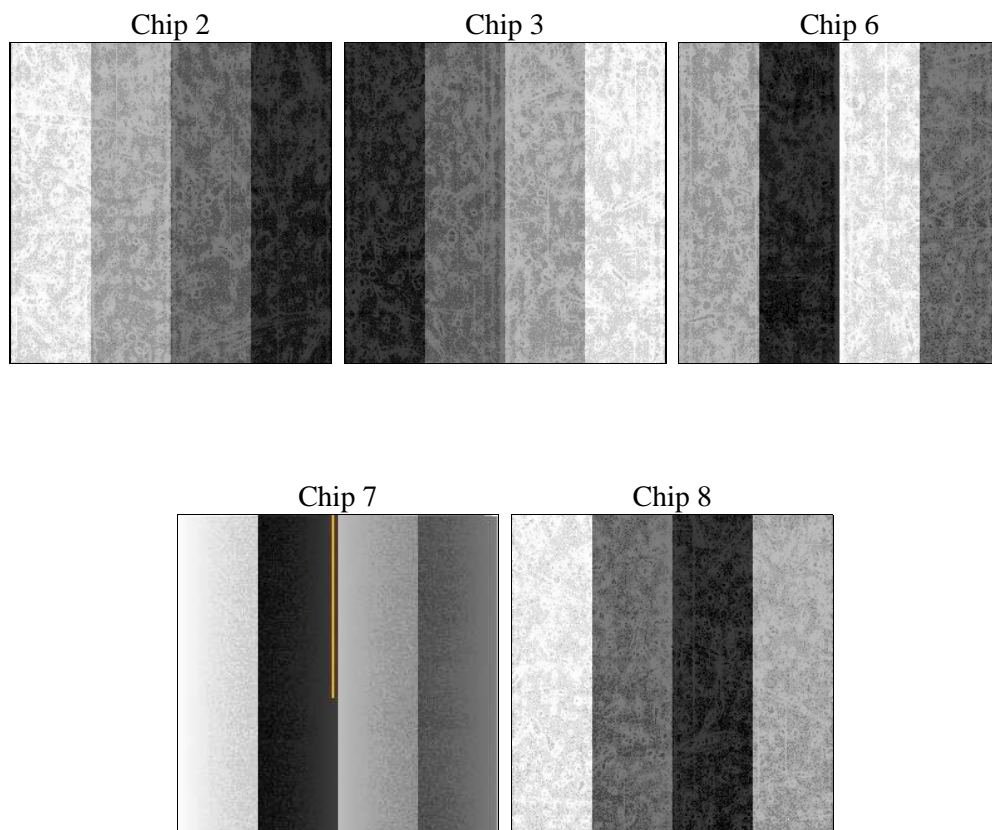
2 OBI

2.1 OBI

2.1.1 Images



2.1.2 Bias



2.1.3 Parameters

obi_num	1	Obi number	sched_exp_time	11200.055000	[s] Scheduled observation exposure time
ascdsver	8.4.3	Processing system revision	ontime	11242.840800881	Sum of GTIs [s]
caldsver	4.4.8	 	ontime2	11242.676640868	Sum of GTIs [s]
date	2012-02-28T00:15:12	Date and time of file creation	ontime3	11242.758720875	Sum of GTIs [s]
revision	2	Processing version of data	ontime6	11239.658720493	Sum of GTIs [s]
			ontime7	11242.840800881	Sum of GTIs [s]
			ontime8	11239.57665056	Sum of GTIs [s]
			l1events	400616	Number of level 1 events

2.1.4 Events

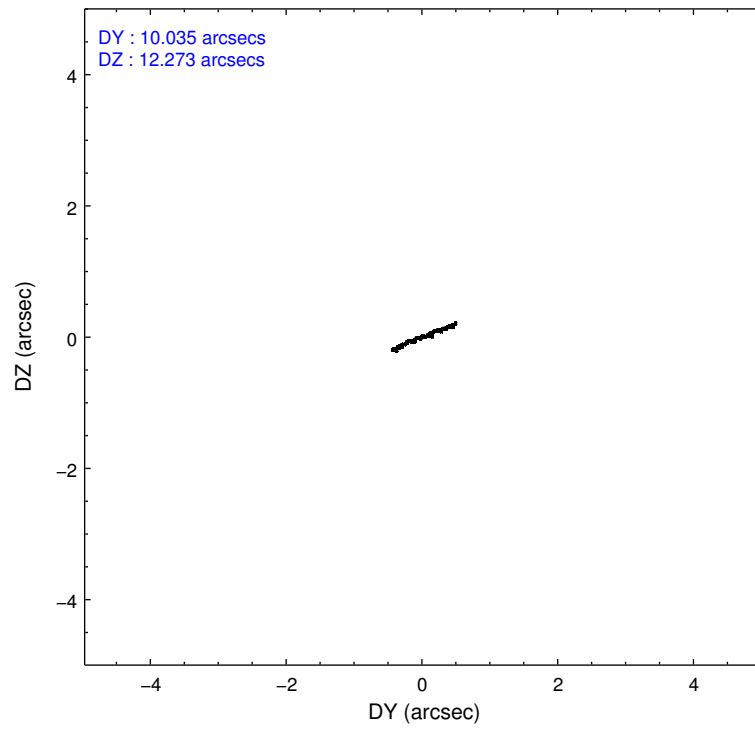
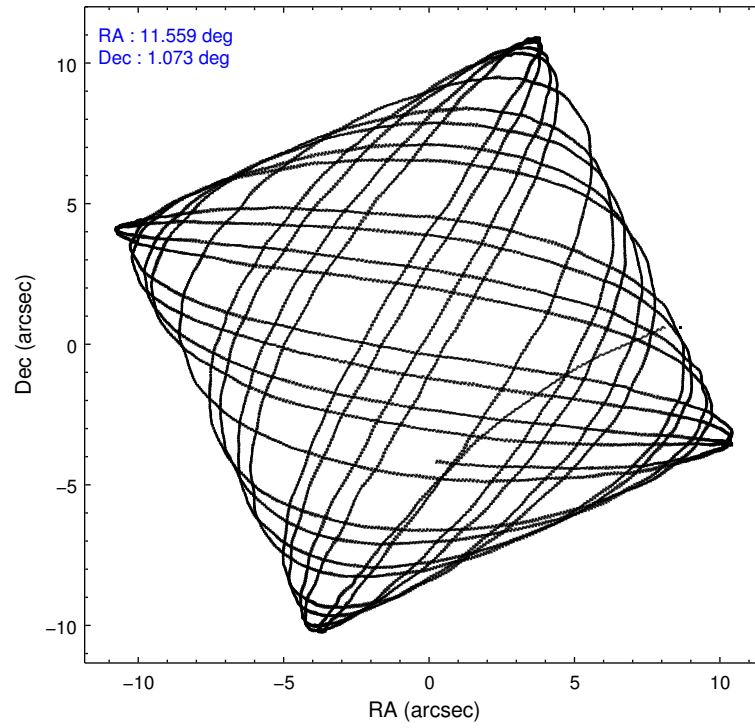
	ccd 2	ccd 3	ccd 6	ccd 7	ccd 8
level 1 events	68538	67817	73092	91556	99613
rejected events	60889	60316	64702	50627	72125
rejected %	88%	88%	88%	55%	72%

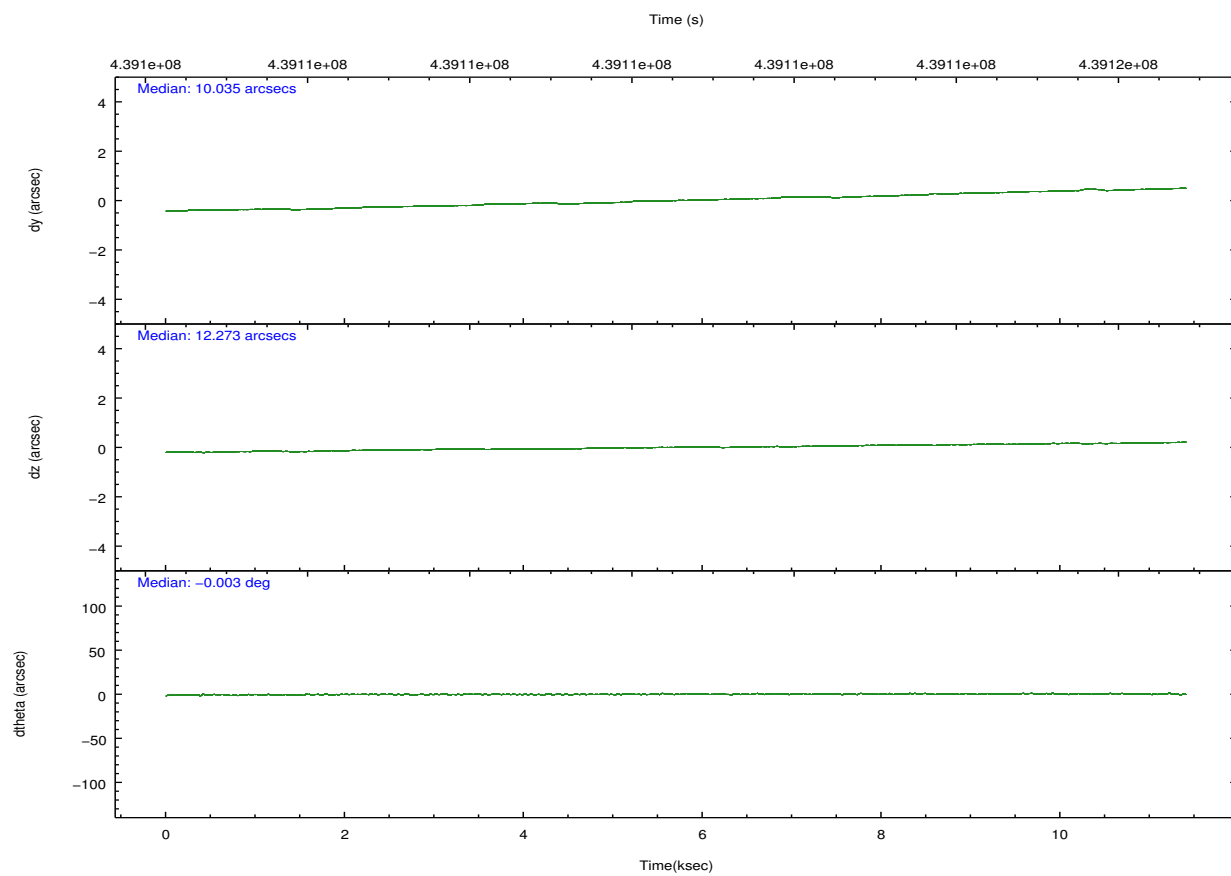
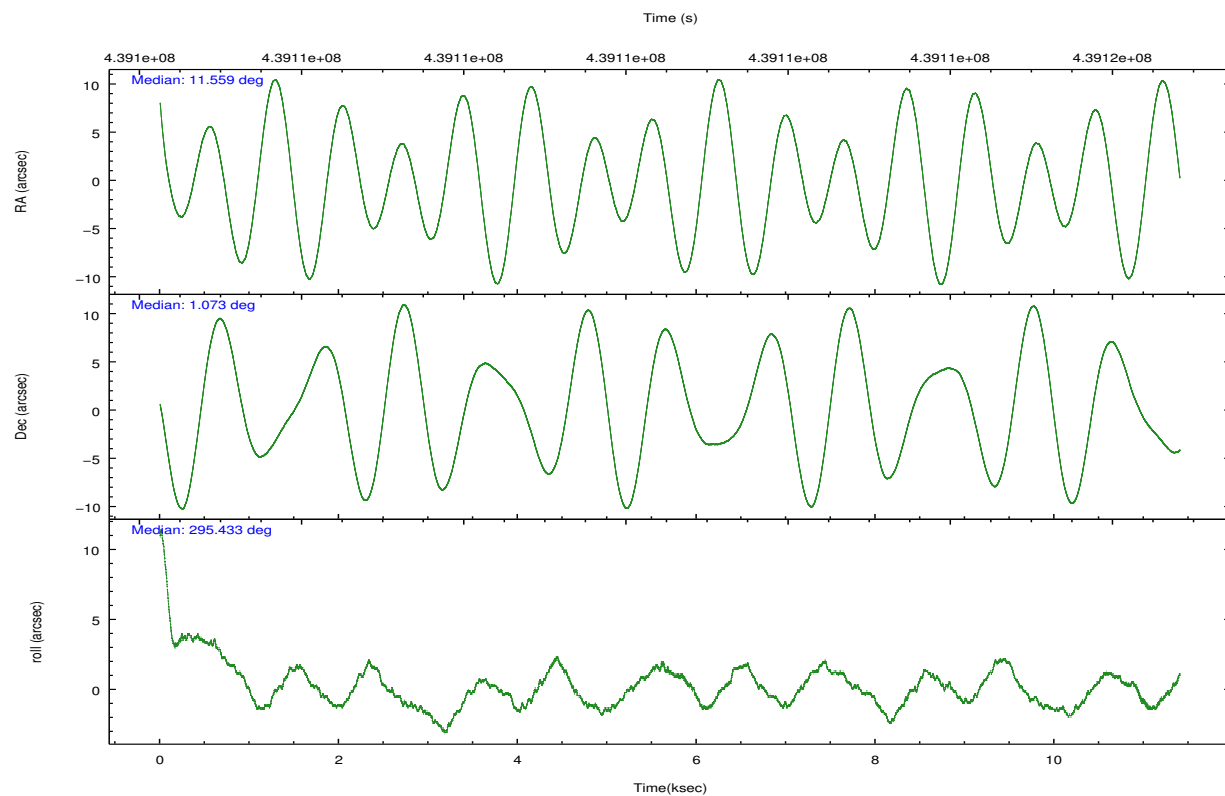
	ccd 2	ccd 3	ccd 6	ccd 7	ccd 8
grade 0 events	2652	2566	2845	3845	7404
	3%	3%	3%	4%	7%
grade 1 events	32	41	34	96	78
	0%	0%	0%	0%	0%
grade 2 events	1851	1688	1957	8298	6749
	2%	2%	2%	9%	6%
grade 3 events	796	838	850	3550	2884
	1%	1%	1%	3%	2%
grade 4 events	793	820	900	3512	2709
	1%	1%	1%	3%	2%
grade 5 events	2915	3471	3429	9364	4994
	4%	5%	4%	10%	5%
grade 6 events	1561	1593	1846	21747	7817
	2%	2%	2%	23%	7%
grade 7 events	57938	56800	61231	41144	66978
	84%	83%	83%	44%	67%

2.2 Compared Parameters

Parameter	Planned	Actual	Parameter	Planned	Actual
Instrument	ACIS	ACIS	Obspar format version number	7	7
Detector	ACIS-23678	ACIS-23678	Obspar file type	PREDICTED	ACTUAL
Grating	NONE	NONE	Obspar update status	NONE	UPDATED
Data mode	VFAINT	VFAINT	CCD I0 on	N	N
Observation mode	POINTING	POINTING	CCD I1 on	N	N
[deg] Pointing RA	11.536529	11.55929326736669	CCD I2 on	O4	Y
[deg] Pointing Dec	1.088635	1.073386631937227	CCD I3 on	O3	Y
[deg] Pointing Roll	295.281637	295.437842709725	CCD S0 on	N	N
[mm] SIM focus pos	-0.684267	-0.6828225247311905	CCD S1 on	N	N
[mm] SIM defocus	0	0.001444936568705701	CCD S2 on	O2	Y
[mm] SIM translation stage pos	-190.132523	-190.1400660498719	CCD S3 on	Y	Y
[mm] SIM translation stage offset	0	0.00754346686406393	CCD S4 on	O1	Y
[s] Observation start time (MET)	439105042.184000	439104104.66799	CCD S5 on	N	N
Observation start date	2011-12-01T05:36:16	2011-12-01T05:21:44	Number of optional ACIS chips dropped	0	0
[s] Observation end time (MET)	439116242.184000	439116468.73114	On-chip summing requested	N	N
Observation end date	2011-12-01T08:42:56	2011-12-01T08:47:48	Subarray requested	NONE	NONE
Read mode	TIMED	TIMED	Alternating exposures requested	N	N
			[s] Primary exposure time	0.000000	3.1

2.3 Aspect



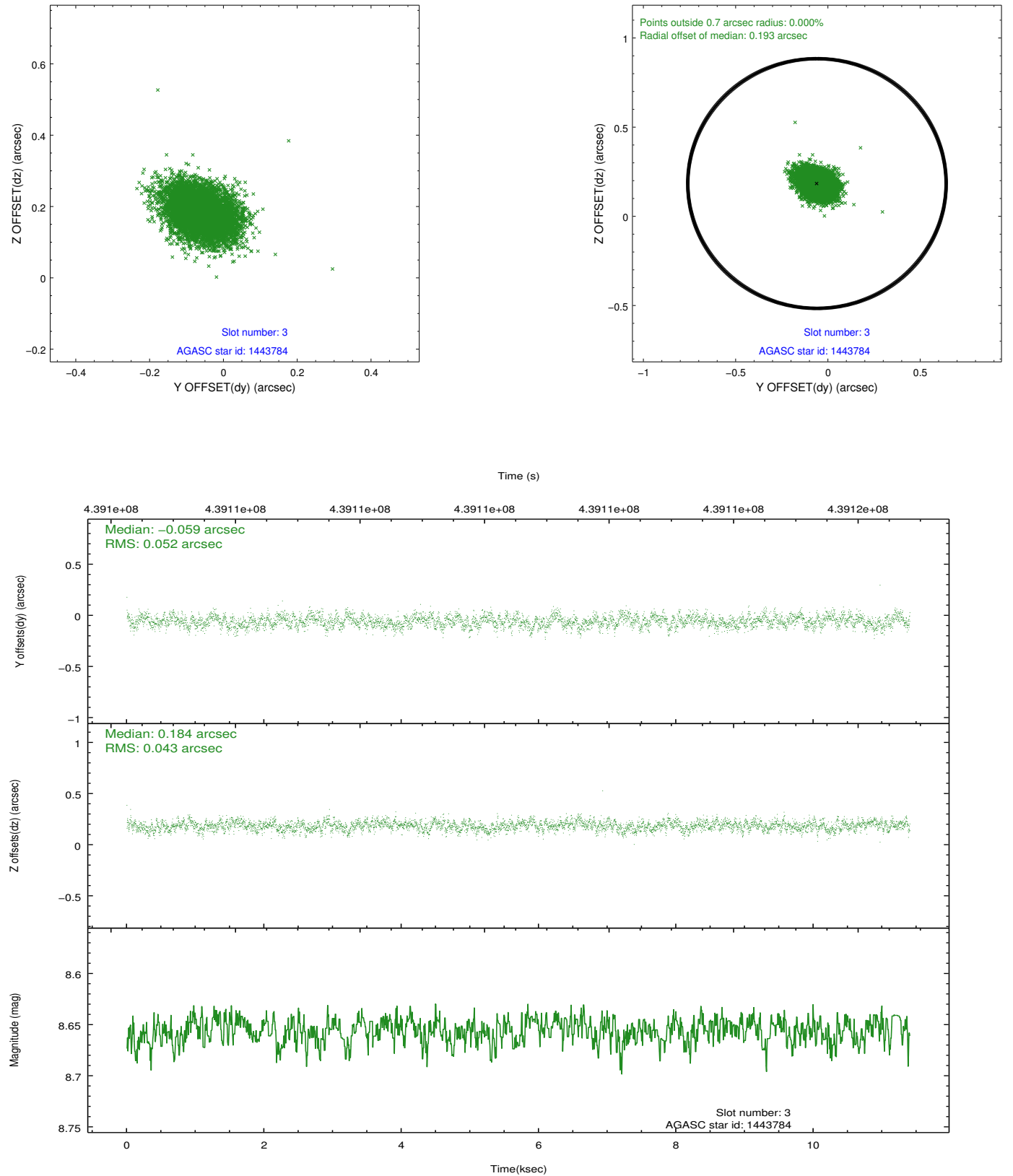


Slot Statistics

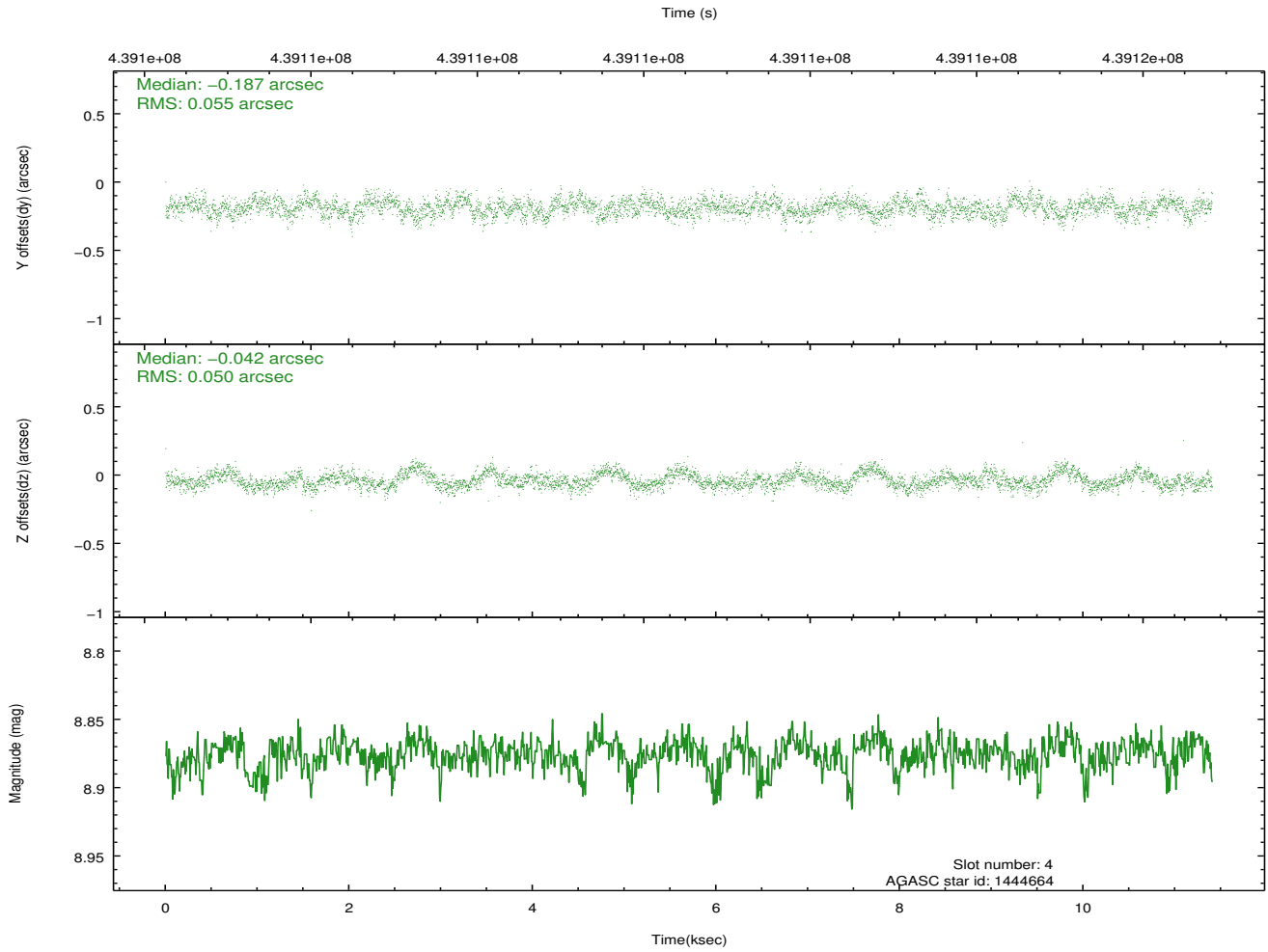
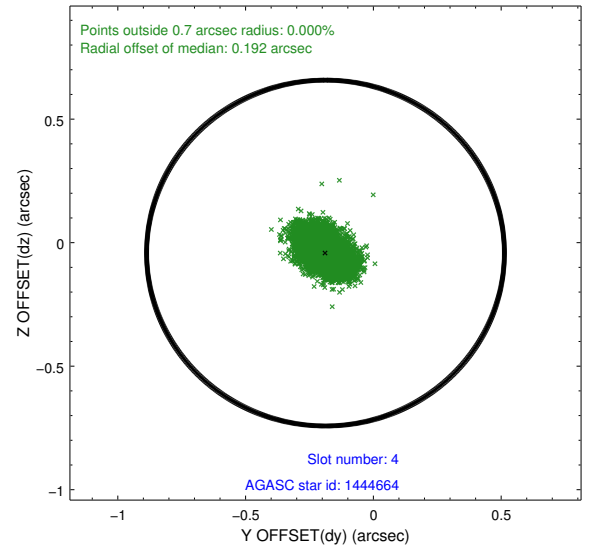
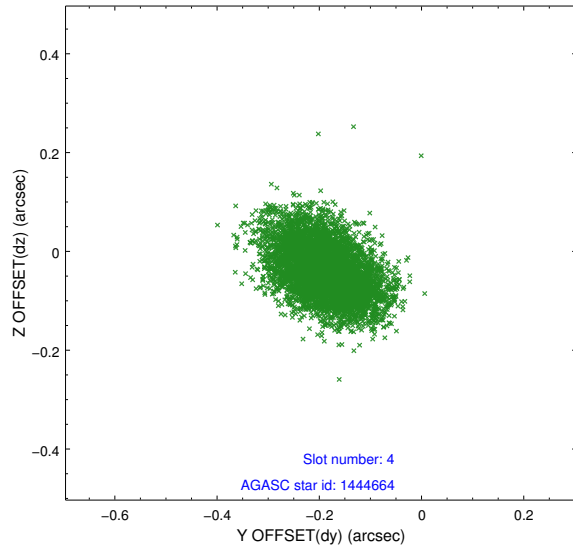
slot	status	id	mag	n_pts	med_dy	med_dz	dr1	dr2	ra	dec	mean_y	mean_z
0	FID	ACIS-S-2	7.01	2782	-0.047	-0.045	0.008	0.014	0.000000	0.000000	-762.96	-1733.60
1	FID	ACIS-S-4	7.10	2782	0.199	0.035	0.006	0.011	0.000000	0.000000	2150.39	174.44
2	FID	ACIS-S-5	7.13	2782	-0.182	0.019	0.009	0.013	0.000000	0.000000	-1815.33	168.68
3	GUIDE	1443784	8.66	5559	-0.059	0.184	0.070	0.116	11.697879	1.544103	-1234.78	1225.66
4	GUIDE	1444664	8.88	5553	-0.187	-0.042	0.079	0.133	11.402994	1.708248	-2222.56	518.39
5	GUIDE	1446024	7.59	5563	0.116	0.033	0.061	0.096	11.477410	0.579409	1566.97	-973.56
6	GUIDE	1447696	8.49	5558	-0.203	-0.001	0.078	0.125	10.739939	1.292792	-1888.78	-2278.15
7	GUIDE	1452200	7.18	5562	0.339	-0.181	0.074	0.132	11.295664	0.253282	2351.13	-2065.99

2.4 Star Slots

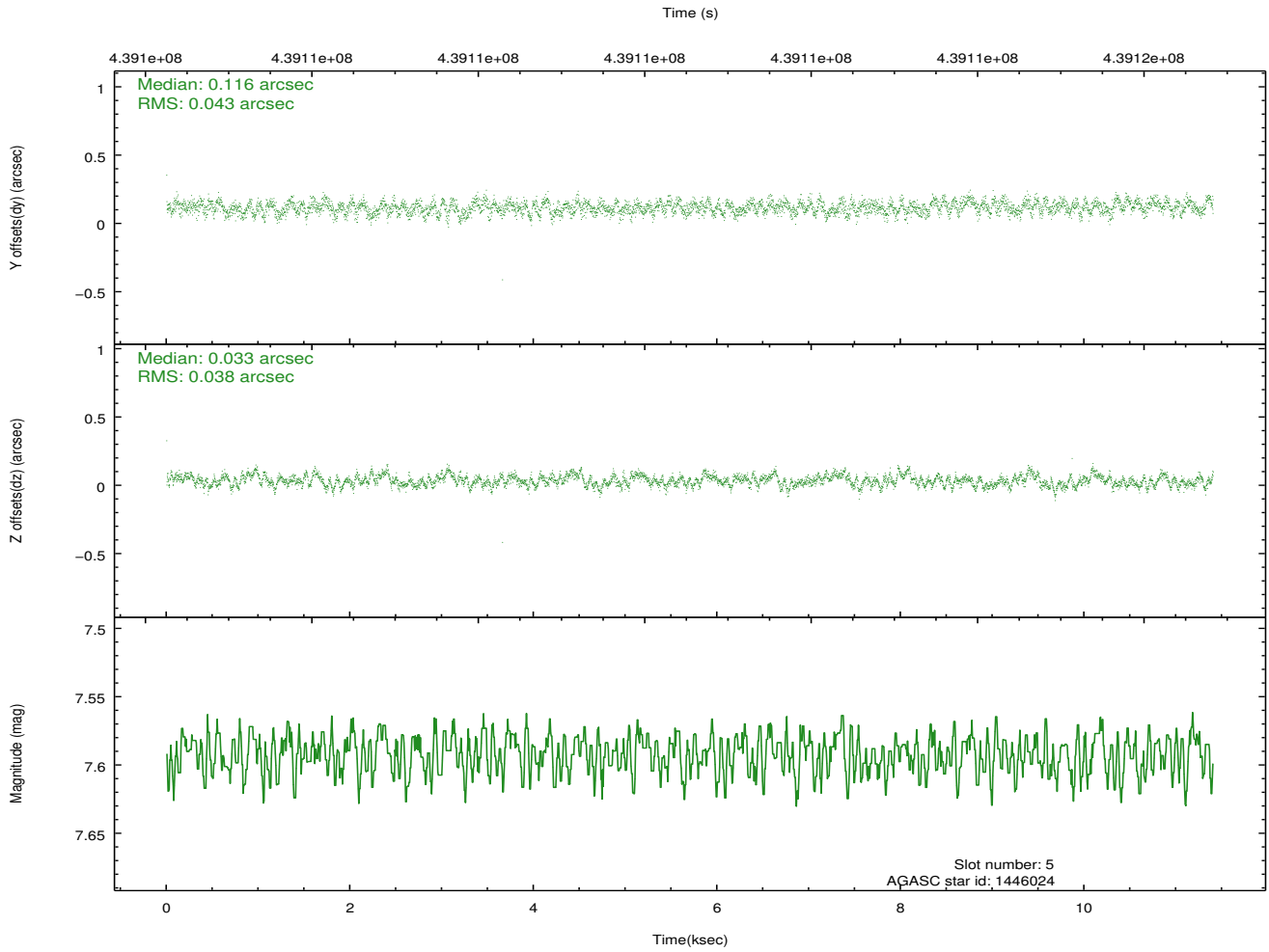
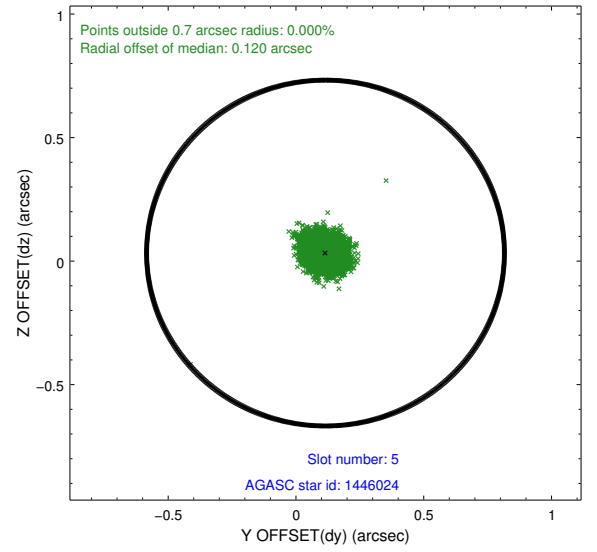
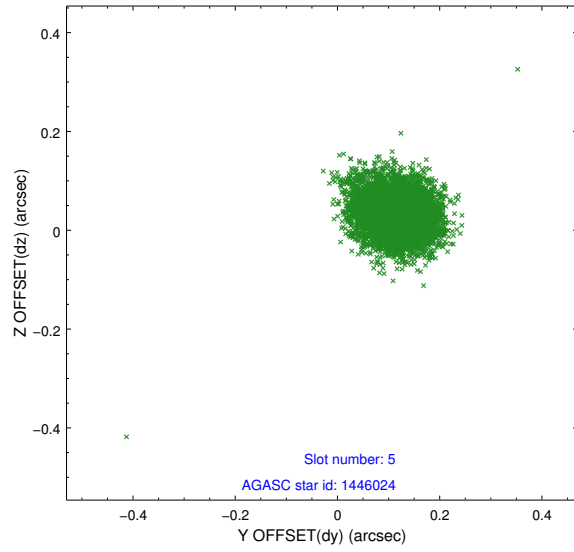
2.4.1 Slot 3



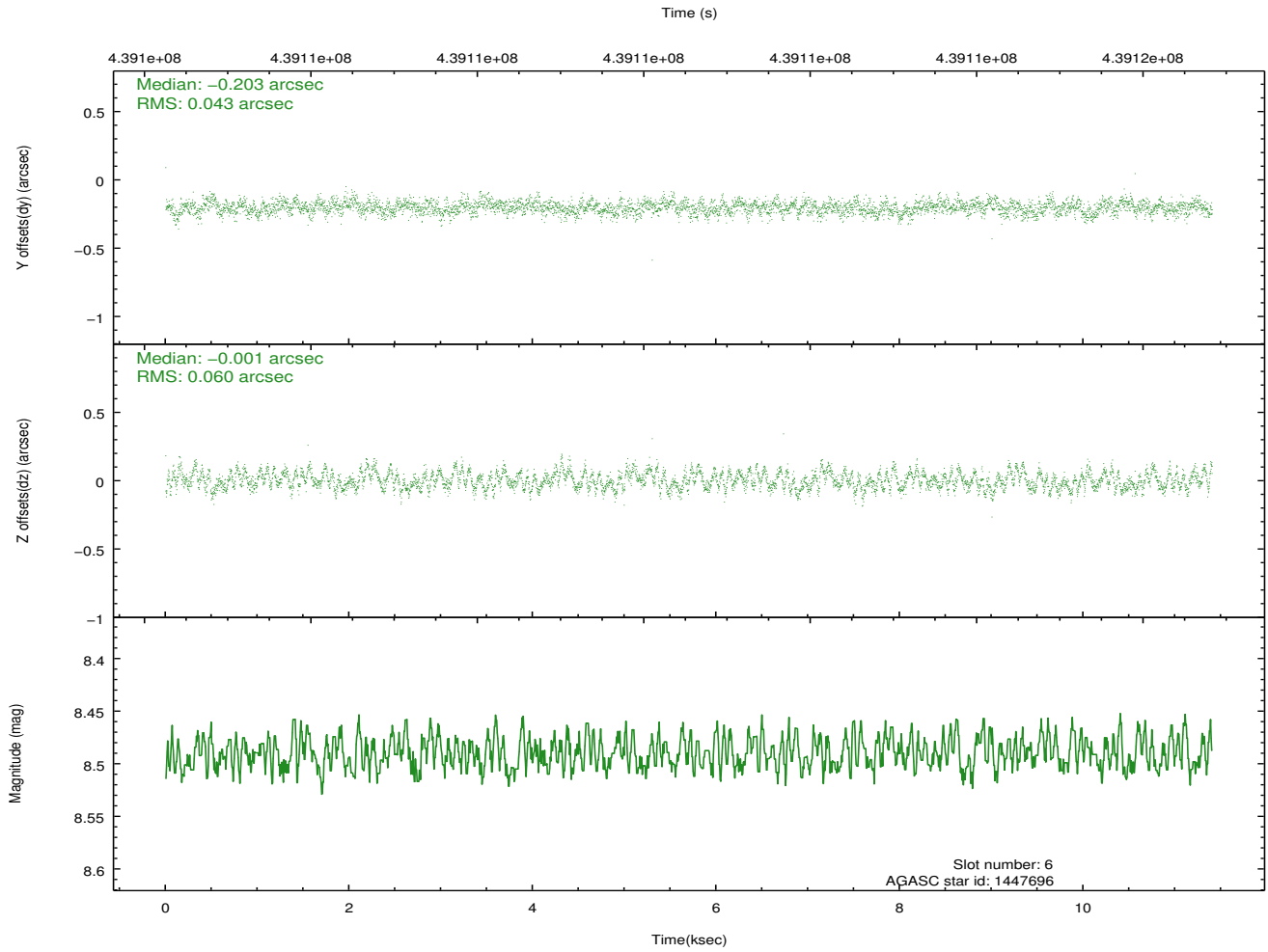
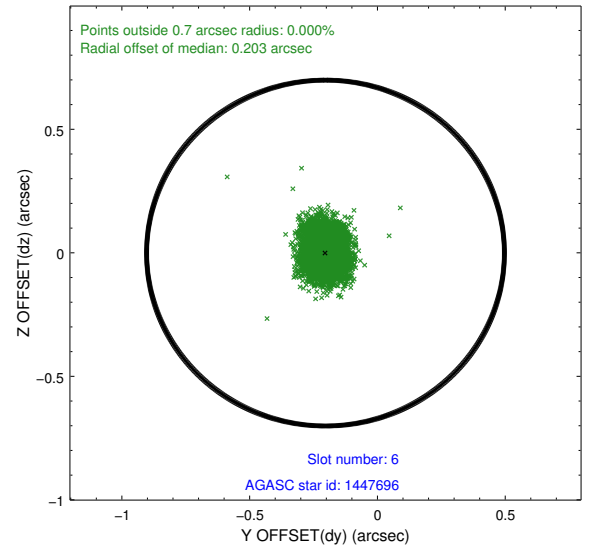
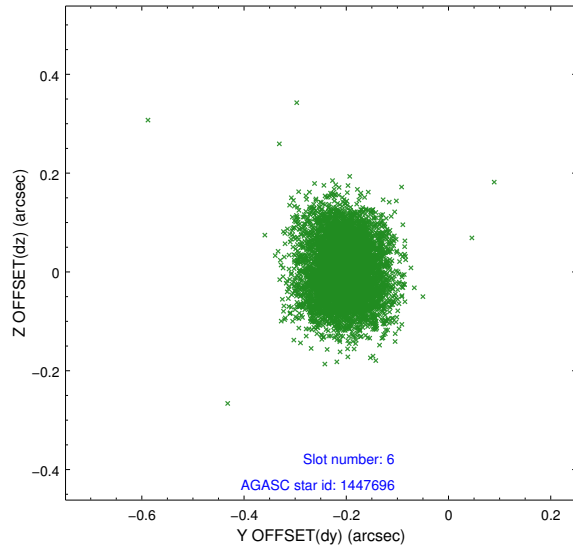
2.4.2 Slot 4



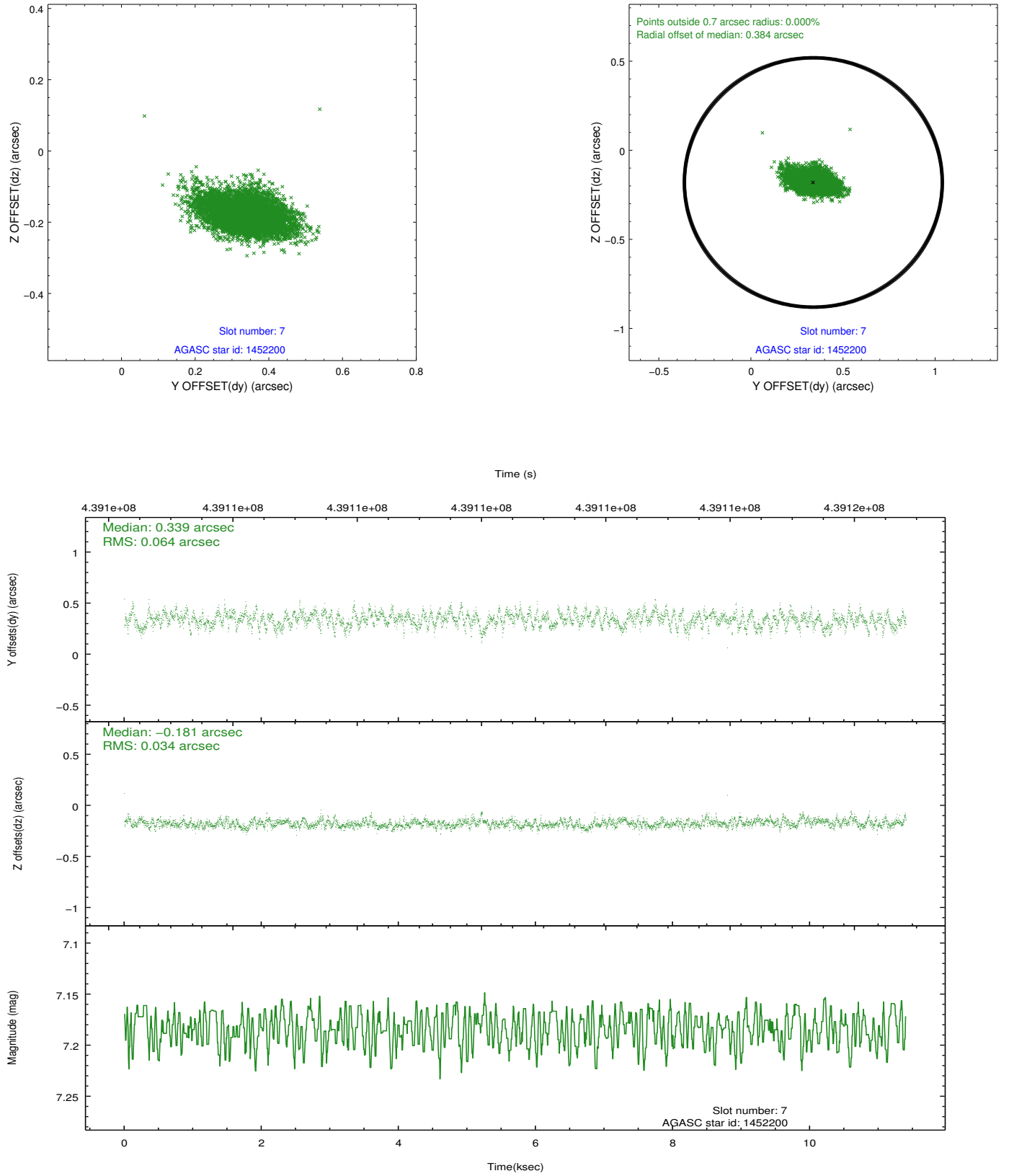
2.4.3 Slot 5



2.4.4 Slot 6

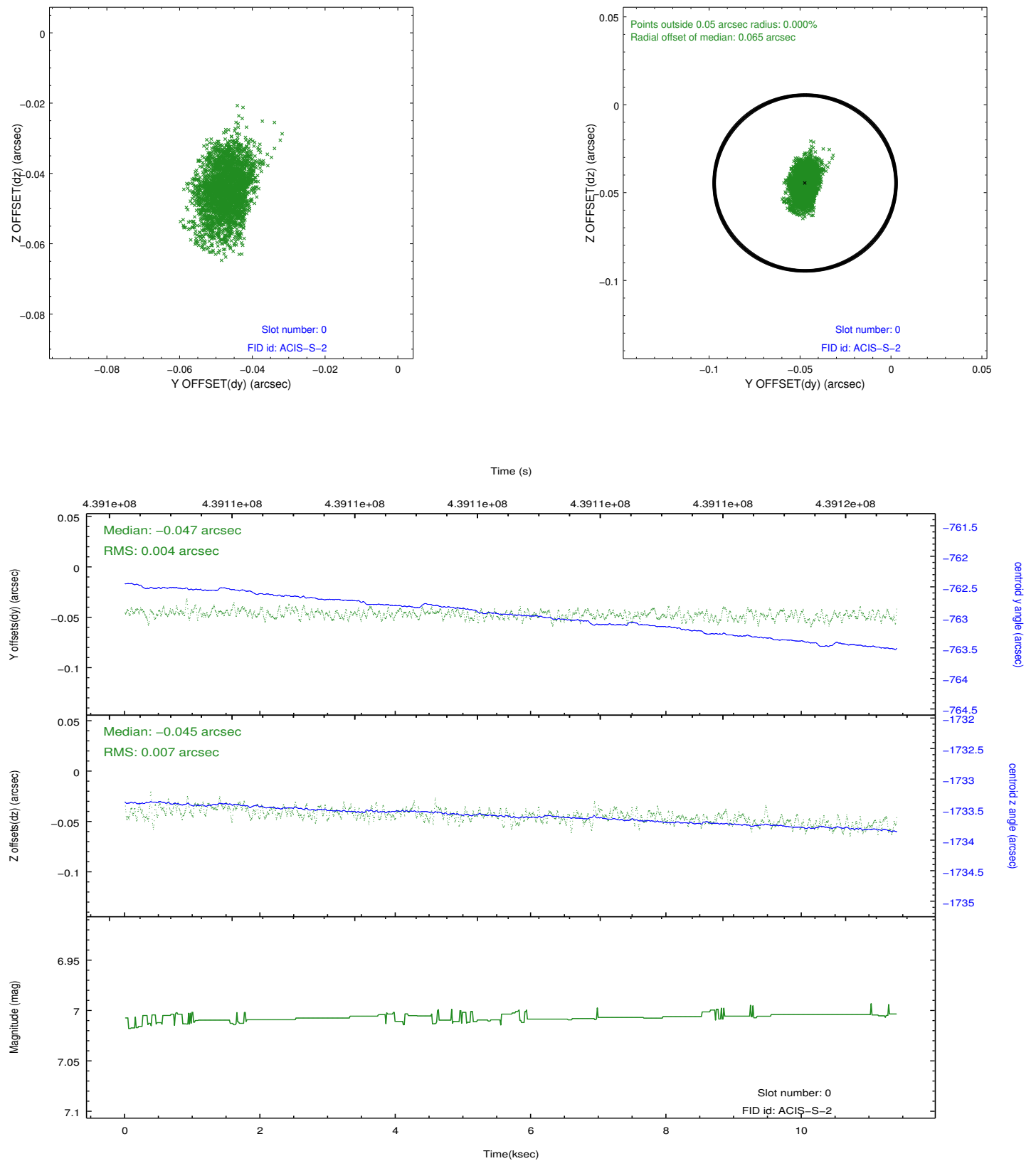


2.4.5 Slot 7

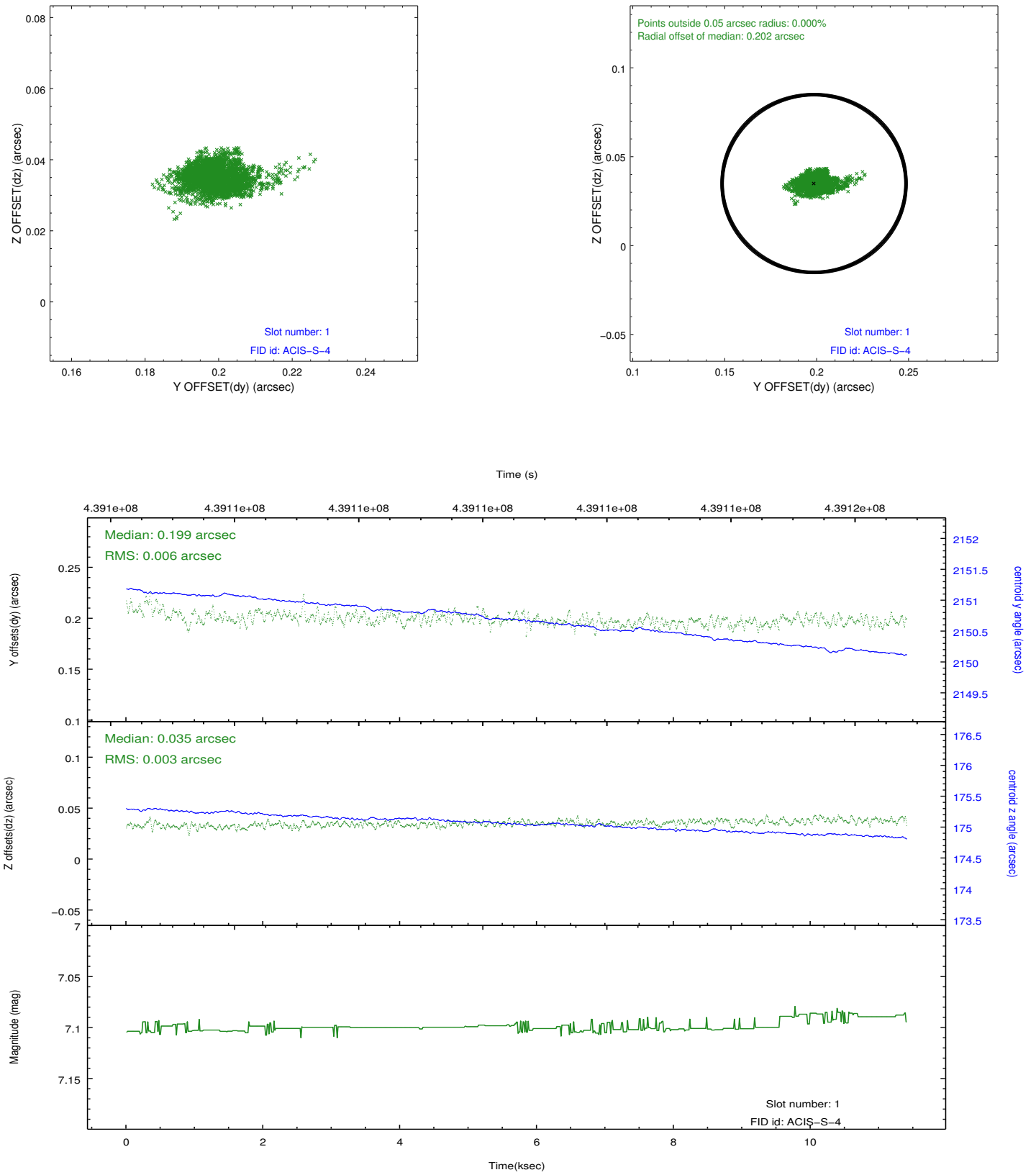


2.5 FID Slots

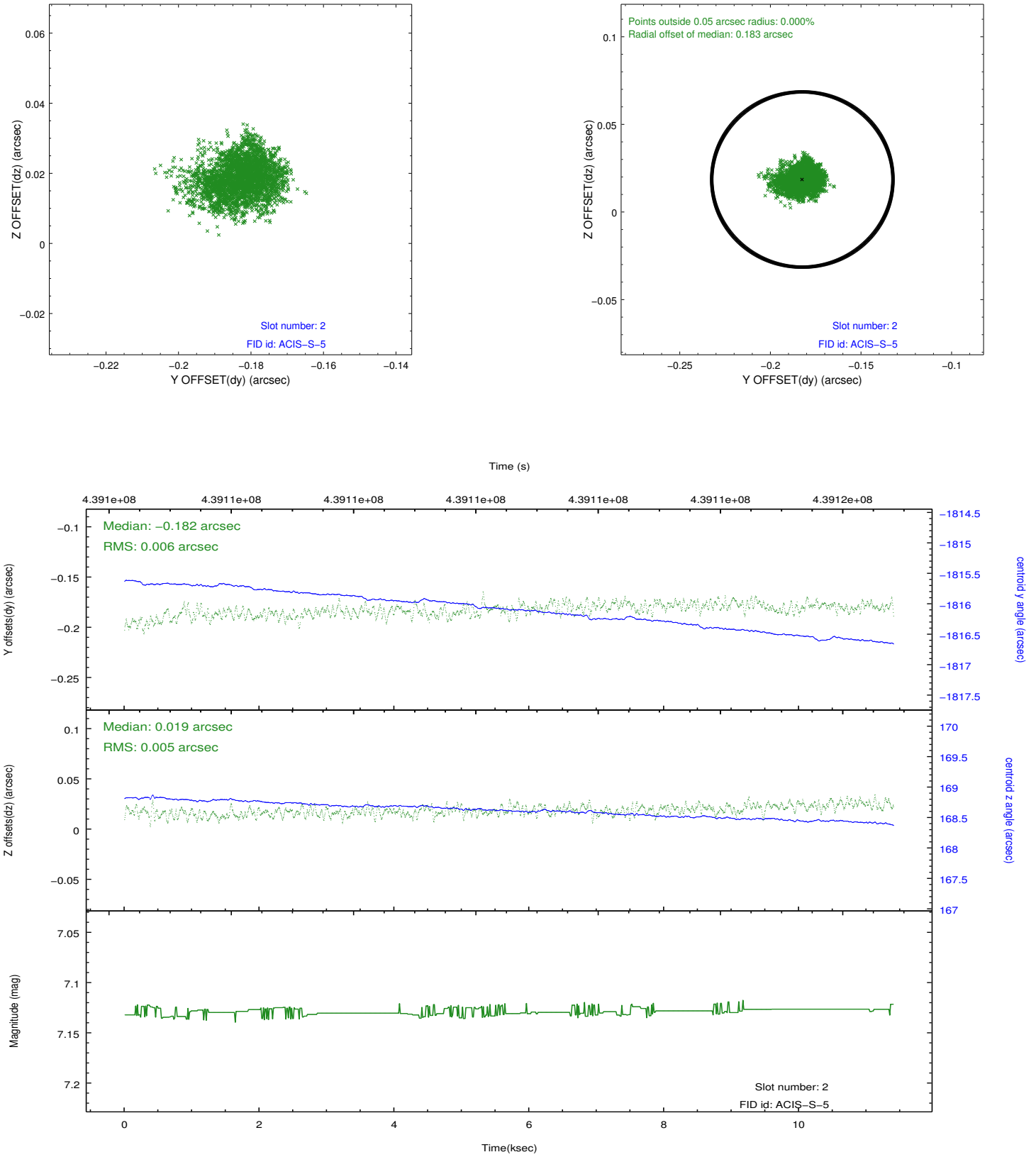
2.5.1 Slot 0



2.5.2 Slot 1



2.5.3 Slot 2



A Summary

A.1 Status

V&V Scientist	Jen Lauer
V&V Date (YYYY-MM-DD)	2012.02.29
V&V Edition	1
V&V Disposition and Status	OK
V&V Charge Time	11.242840795815

A.2 Comments