

# V&V Reference Report

## L2 ASCDS Version : 8.4.5

Observation 12224 - L2 Version 2  
Chandra X-Ray Center

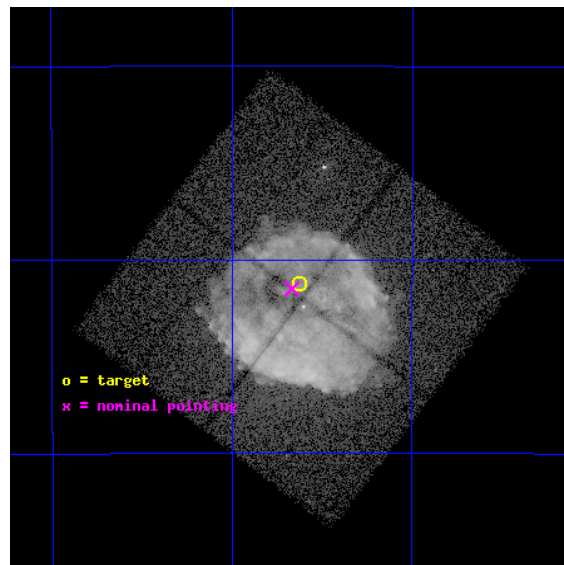
L2 Processing Date : Jun 29 2012

## Contents

<b>1</b>	<b>Front</b>	<b>2</b>
<b>2</b>	<b>OBI</b>	<b>3</b>
2.1	OBI . . . . .	3
2.1.1	Images . . . . .	3
2.1.2	Bias . . . . .	3
2.1.3	Parameters . . . . .	4
2.1.4	Events . . . . .	4
2.2	Compared Parameters . . . . .	5
2.3	Aspect . . . . .	6
2.4	Star Slots . . . . .	9
2.4.1	Slot 3 . . . . .	9
2.4.2	Slot 4 . . . . .	10
2.4.3	Slot 5 . . . . .	11
2.4.4	Slot 6 . . . . .	12
2.4.5	Slot 7 . . . . .	13
2.5	FID Slots . . . . .	14
2.5.1	Slot 0 . . . . .	14
2.5.2	Slot 1 . . . . .	15
2.5.3	Slot 2 . . . . .	16
<b>A</b>	<b>Summary</b>	<b>17</b>
A.1	Status . . . . .	17
A.2	Comments . . . . .	17

# 1 Front

seq_num	501340	Sequence number
obs_id	12224	Observation id
title	SNR RCW 103: Ejecta, Blast Wave, and the Central Compact Object	Pr
observer	Professor Gordon Garmire	Principal investigator
object	RCW 103	Source name
dtcycle	0	&#160
cycle	P	events from which exps? Prim/Second/Both
ra_targ	244.406667	Observer's specified target RA [deg]
dec_targ	-51.020278	Observer's specified target Dec [deg]
ra_nom	244.41712090495	Nominal RA [deg]
dec_nom	-51.024938823079	Nominal Dec [deg]
roll_nom	307.35028960494	Nominal Roll [deg]
revision	2	Processing version of data
ontime	18060.600138903	Sum of GTIs [s]
livetime	17824.625102068	Livetime [s]
ontime0	18060.600138903	Sum of GTIs [s]
ontime1	18060.600138903	Sum of GTIs [s]
ontime2	18060.600138903	Sum of GTIs [s]
ontime3	18060.600138903	Sum of GTIs [s]
l2events	531848	Number of level 2 events

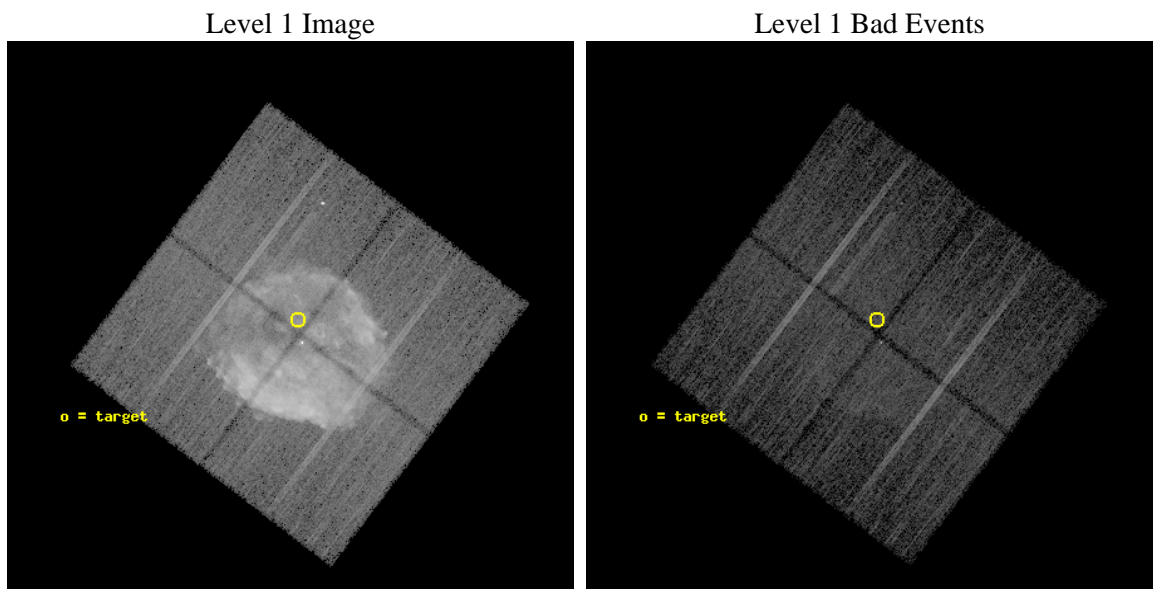




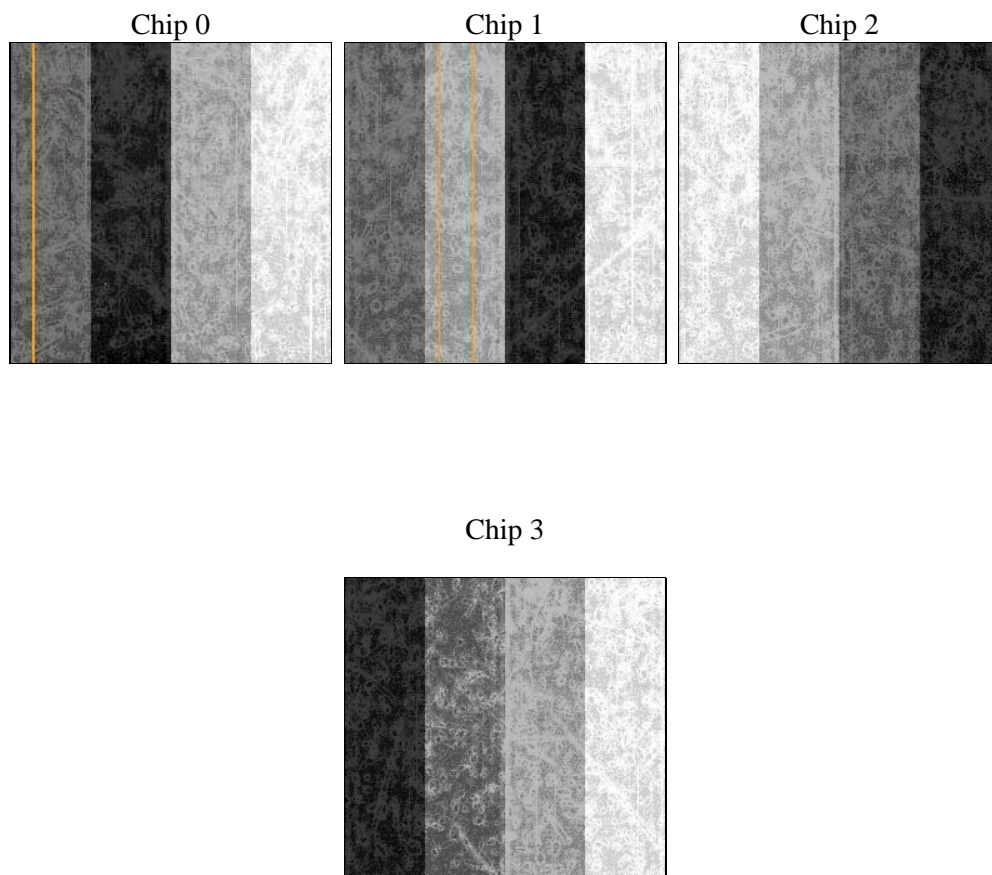
## 2 OBI

### 2.1 OBI

#### 2.1.1 Images



#### 2.1.2 Bias



### 2.1.3 Parameters

obi_num	0	Obi number	sched_exp_time	18000.000000	[s] Scheduled observation exposure time
ascdsver	8.4.5	Processing system revision	ontime	18060.600138903	Sum of GTIs [s]
caldsver	4.5.0	&#160	ontime0	18060.600138903	Sum of GTIs [s]
date	2012-06-29T09:59:50	Date and time of file creation	ontime1	18060.600138903	Sum of GTIs [s]
revision	2	Processing version of data	ontime2	18060.600138903	Sum of GTIs [s]
			ontime3	18060.600138903	Sum of GTIs [s]
			l1events	1014672	Number of level 1 events

### 2.1.4 Events

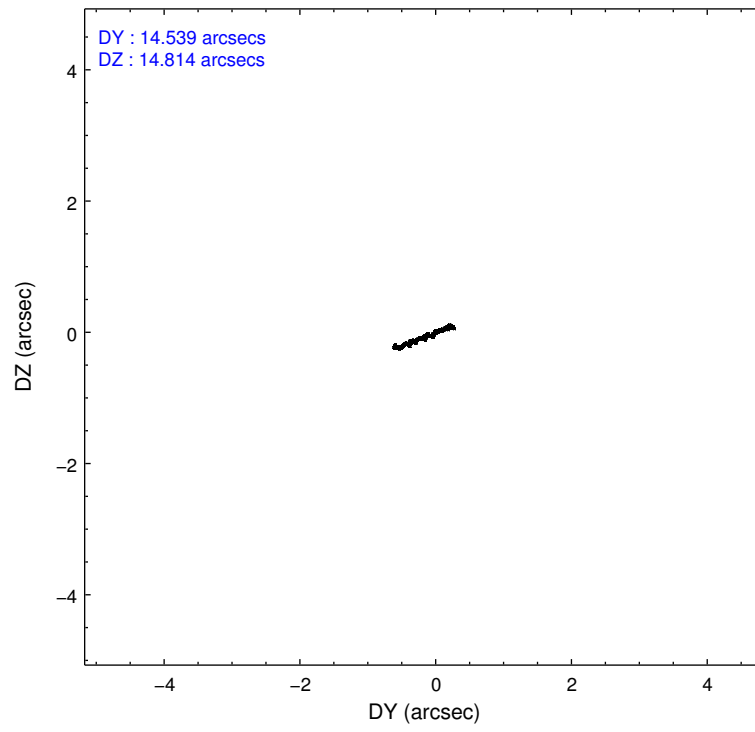
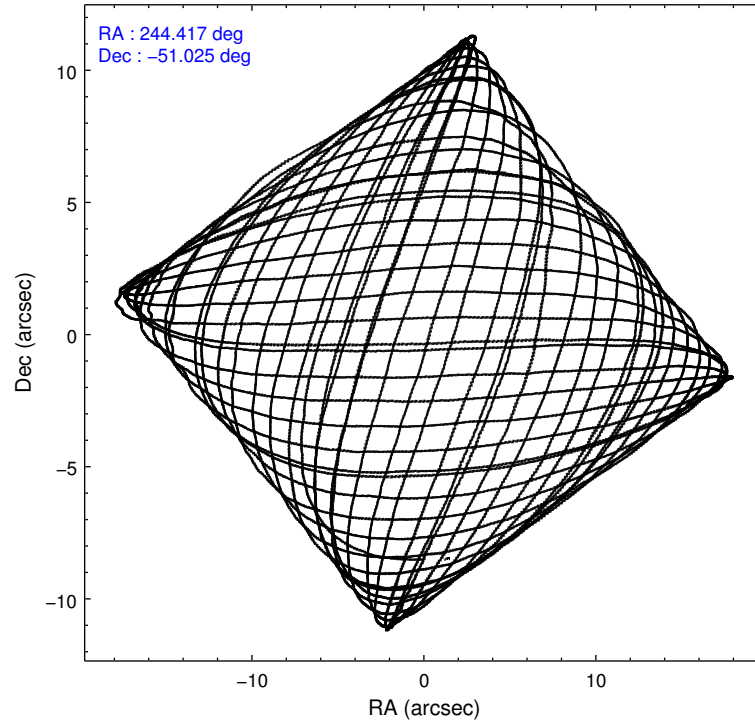
	ccd 0	ccd 1	ccd 2	ccd 3
level 1 events	377802	219092	238646	179132
rejected events	110840	102709	116070	111724
rejected %	29%	46%	48%	62%

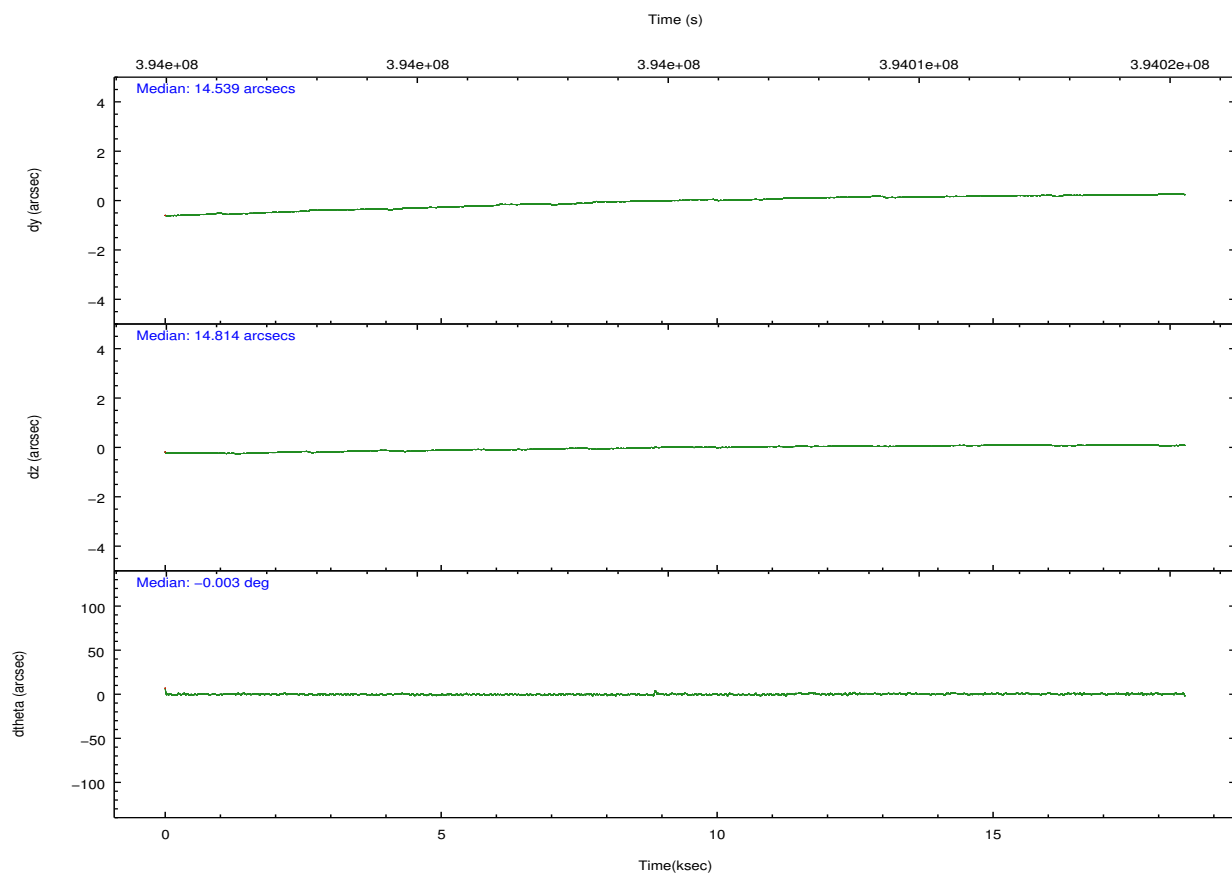
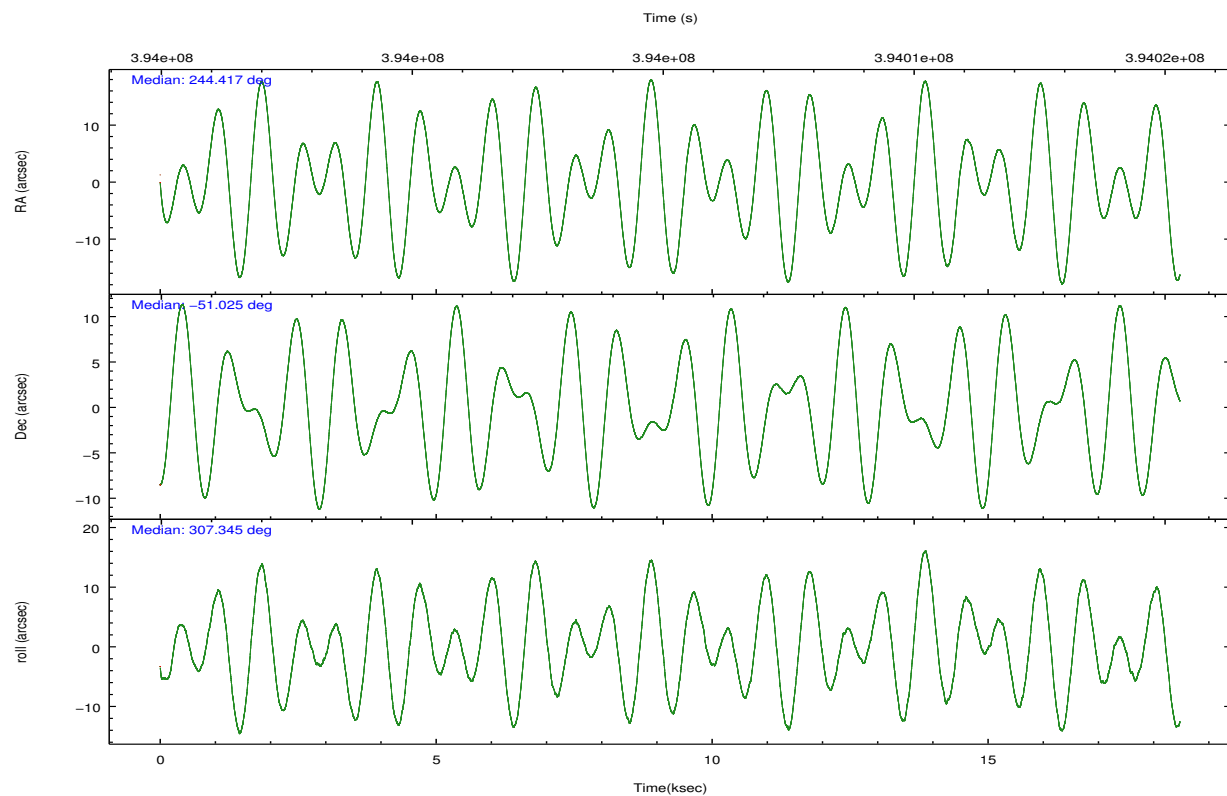
	ccd 0	ccd 1	ccd 2	ccd 3
grade 0 events	225876	93894	100926	52386
	59%	42%	42%	29%
grade 1 events	1390	472	612	335
	0%	0%	0%	0%
grade 2 events	23442	11605	11513	7018
	6%	5%	4%	3%
grade 3 events	6430	3608	3448	2479
	1%	1%	1%	1%
grade 4 events	6461	3532	3458	2513
	1%	1%	1%	1%
grade 5 events	5308	4955	4264	5123
	1%	2%	1%	2%
grade 6 events	4850	3779	3290	3030
	1%	1%	1%	1%
grade 7 events	104045	97247	111135	106248
	27%	44%	46%	59%

## 2.2 Compared Parameters

Parameter	Planned	Actual	Parameter	Planned	Actual
Instrument	ACIS	ACIS	Obspar format version number	7	7
Detector	ACIS-0123	ACIS-0123	Obspar file type	PREDICTED	ACTUAL
Grating	NONE	NONE	Obspar update status	NONE	UPDATED
Data mode	FAINT	FAINT	Number of optional ACIS chips dropped	0	0
Observation mode	POINTING	POINTING	On-chip summing requested	N	N
[deg] Pointing RA	244.376743	244.4171209049546	Subarray requested	NONE	NONE
[deg] Pointing Dec	-51.014452	-51.02493882307868	Alternating exposures requested	N	N
[deg] Pointing Roll	307.110216	307.3502896049437	[s] Primary exposure time	0.000000	3.1
[mm] SIM focus pos	-0.782348	-0.7809083437167272			
[mm] SIM defocus	0	0.001439871863259334			
[mm] SIM translation stage pos	-233.592463	-233.5874344608287			
[mm] SIM translation stage offset	0	-0.005018542100998502			
[s] Observation start time (MET)	393996380.184000	393995369.40153			
Observation start date	2010-06-27T03:25:14	2010-06-27T03:09:29			
[s] Observation end time (MET)	394014380.184000	394015380.47755			
Observation end date	2010-06-27T08:25:14	2010-06-27T08:43:00			
Read mode	TIMED	TIMED			

## 2.3 Aspect



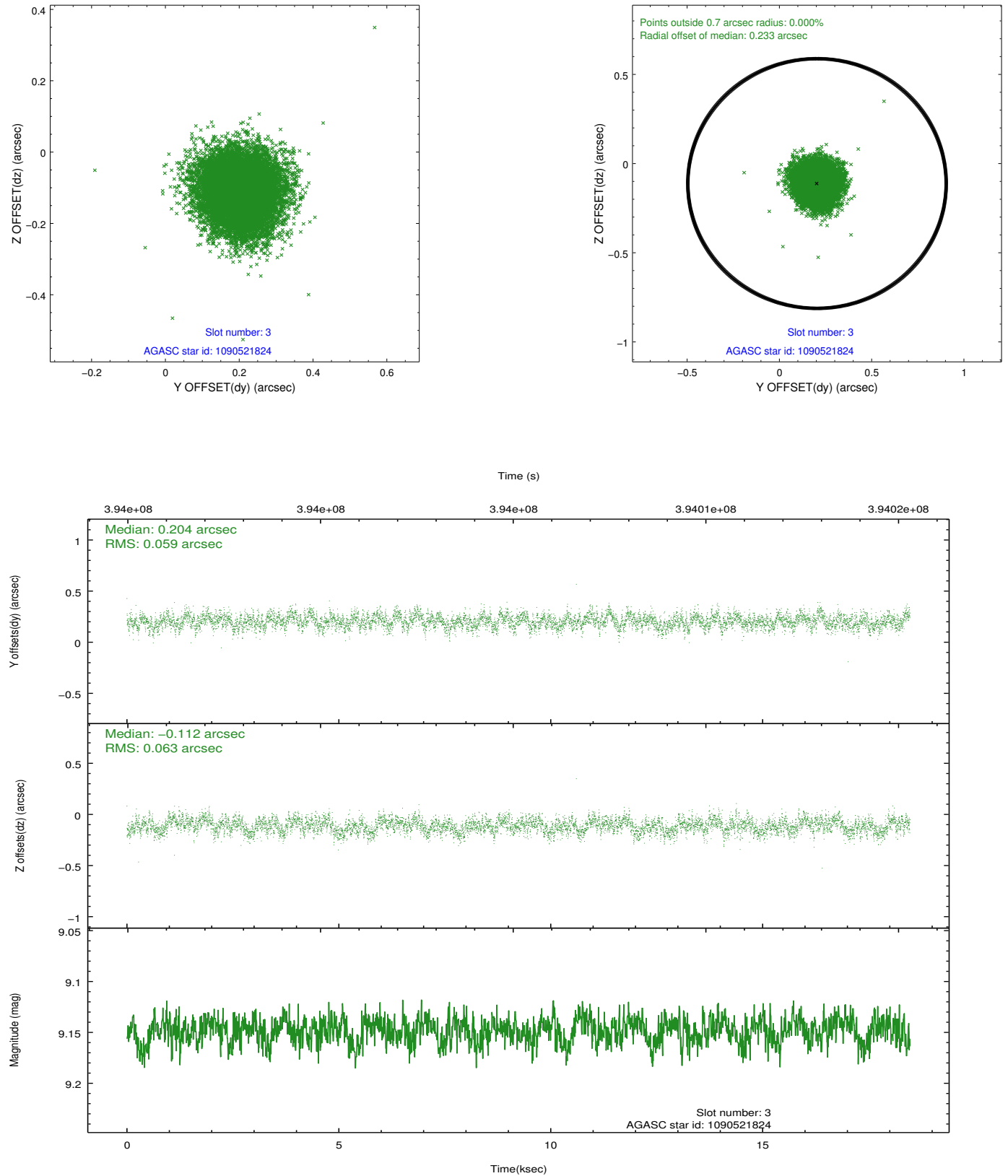


### Slot Statistics

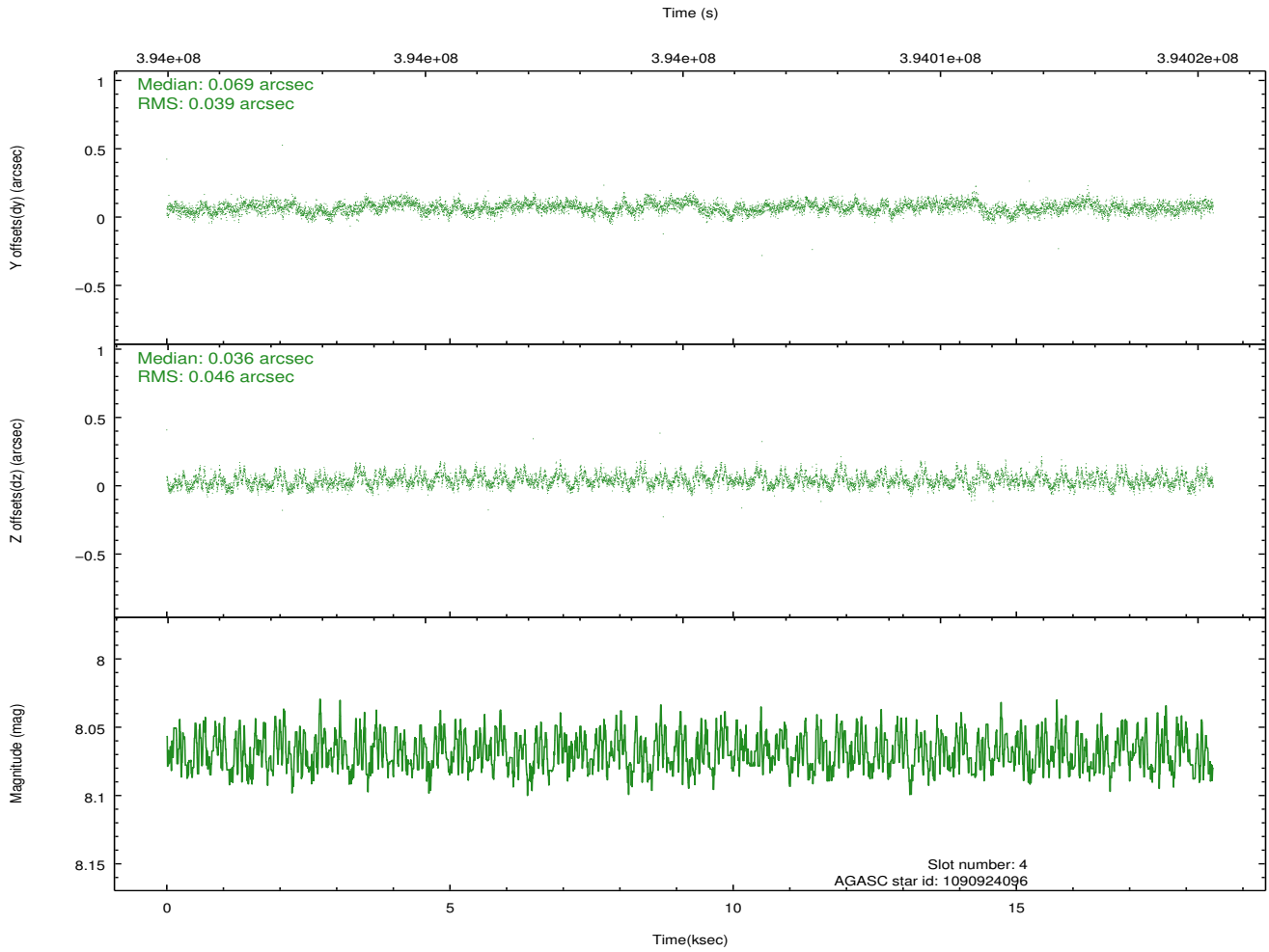
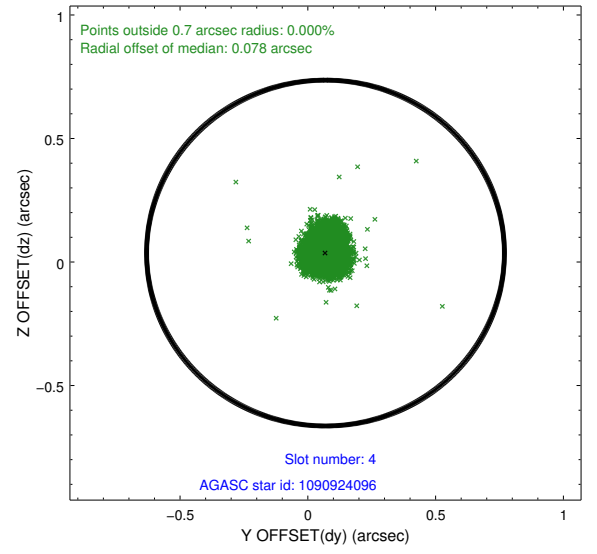
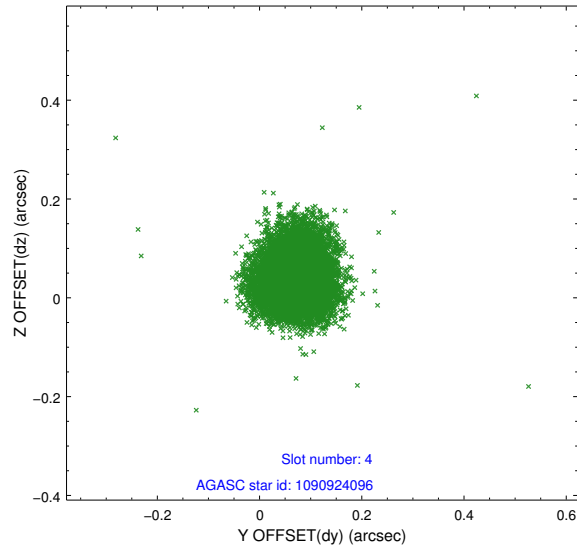
slot	status	id	mag	n_pts	med_dy	med_dz	dr1	dr2	ra	dec	mean_y	mean_z
0	FID	ACIS-I-4	6.94	4506	0.150	0.034	0.013	0.036	0.000000	0.000000	2145.11	1061.57
1	FID	ACIS-I-5	7.03	4507	-0.300	0.013	0.010	0.023	0.000000	0.000000	-1823.02	1059.42
2	FID	ACIS-I-6	7.03	4507	0.049	0.021	0.010	0.017	0.000000	0.000000	390.34	1703.78
3	GUIDE	1090521824	9.15	9007	0.204	-0.112	0.093	0.145	244.711253	-50.470098	-1098.60	1792.55
4	GUIDE	1090924096	8.07	9011	0.069	0.036	0.063	0.102	243.849549	-51.016855	-709.69	-959.60
5	GUIDE	1090924384	8.06	9010	-0.054	0.095	0.067	0.107	243.330505	-50.934017	-1649.44	-1728.78
6	GUIDE	1091057912	9.13	9006	0.016	0.006	0.103	0.162	245.642757	-51.112070	2026.21	2054.81
7	GUIDE	1091059112	9.04	9005	-0.230	-0.025	0.099	0.160	245.180420	-50.736664	315.35	2057.81

## 2.4 Star Slots

### 2.4.1 Slot 3

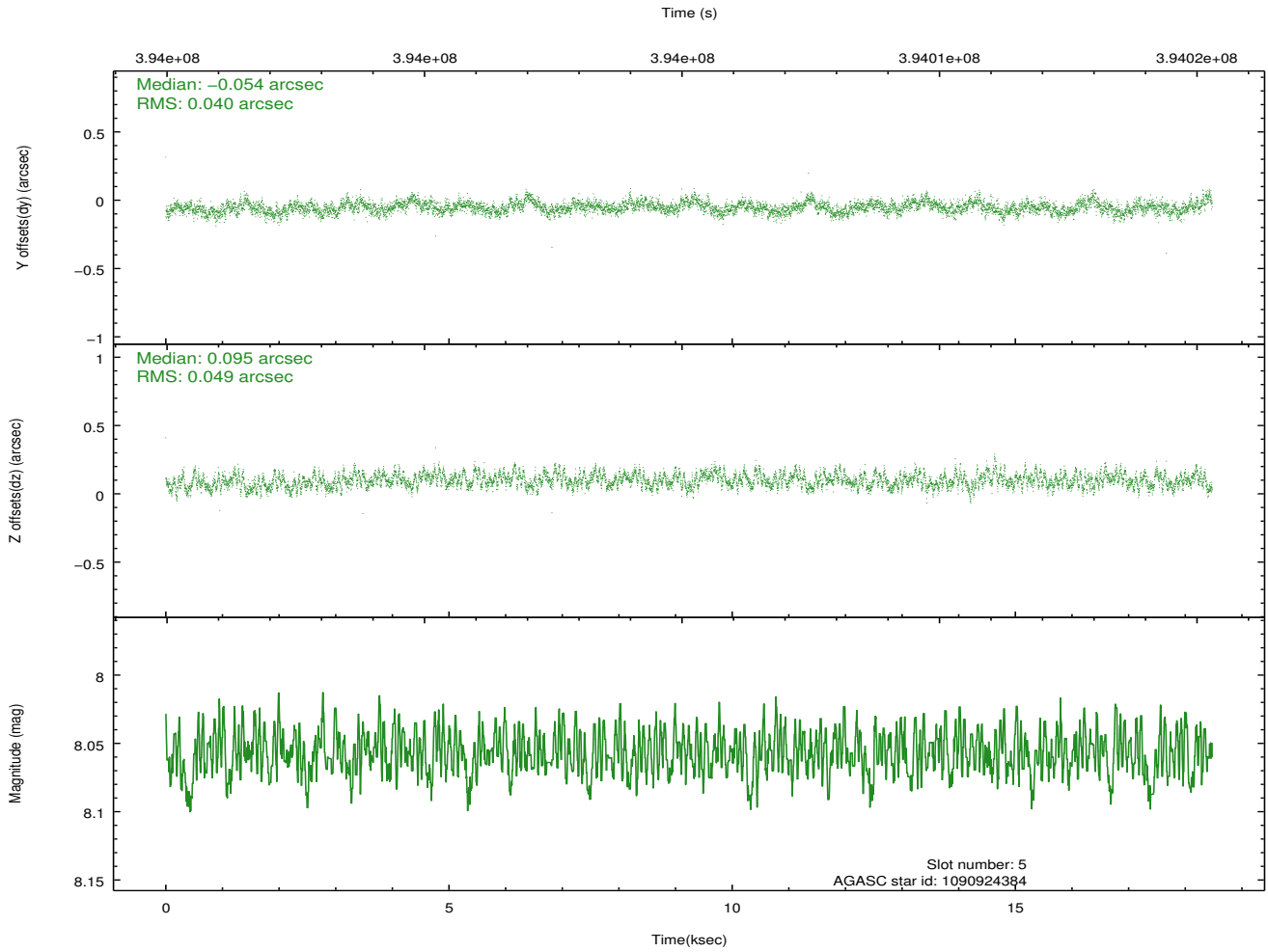
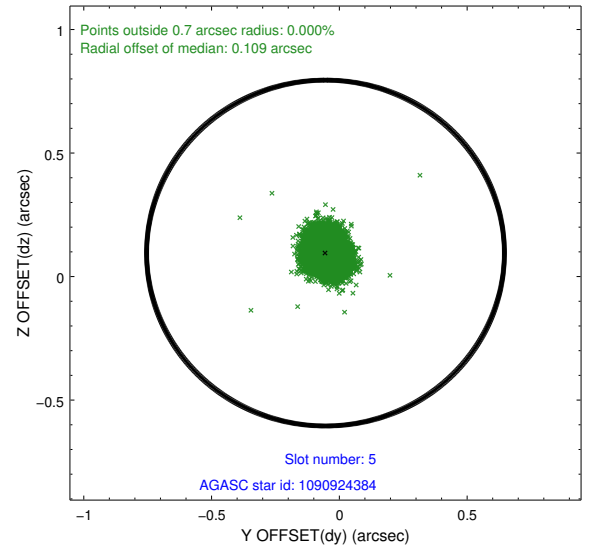
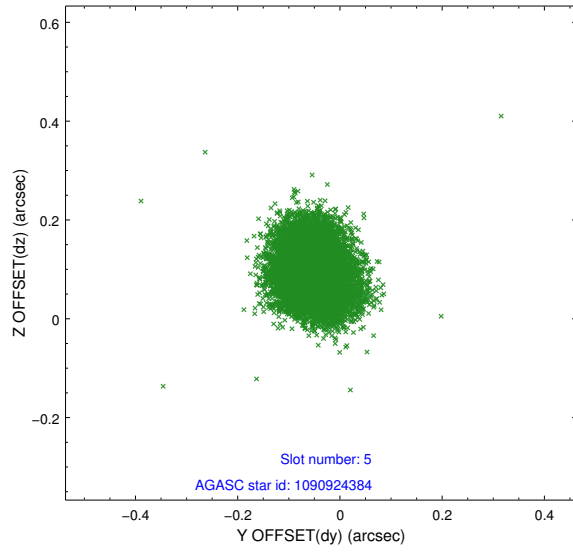


## 2.4.2 Slot 4

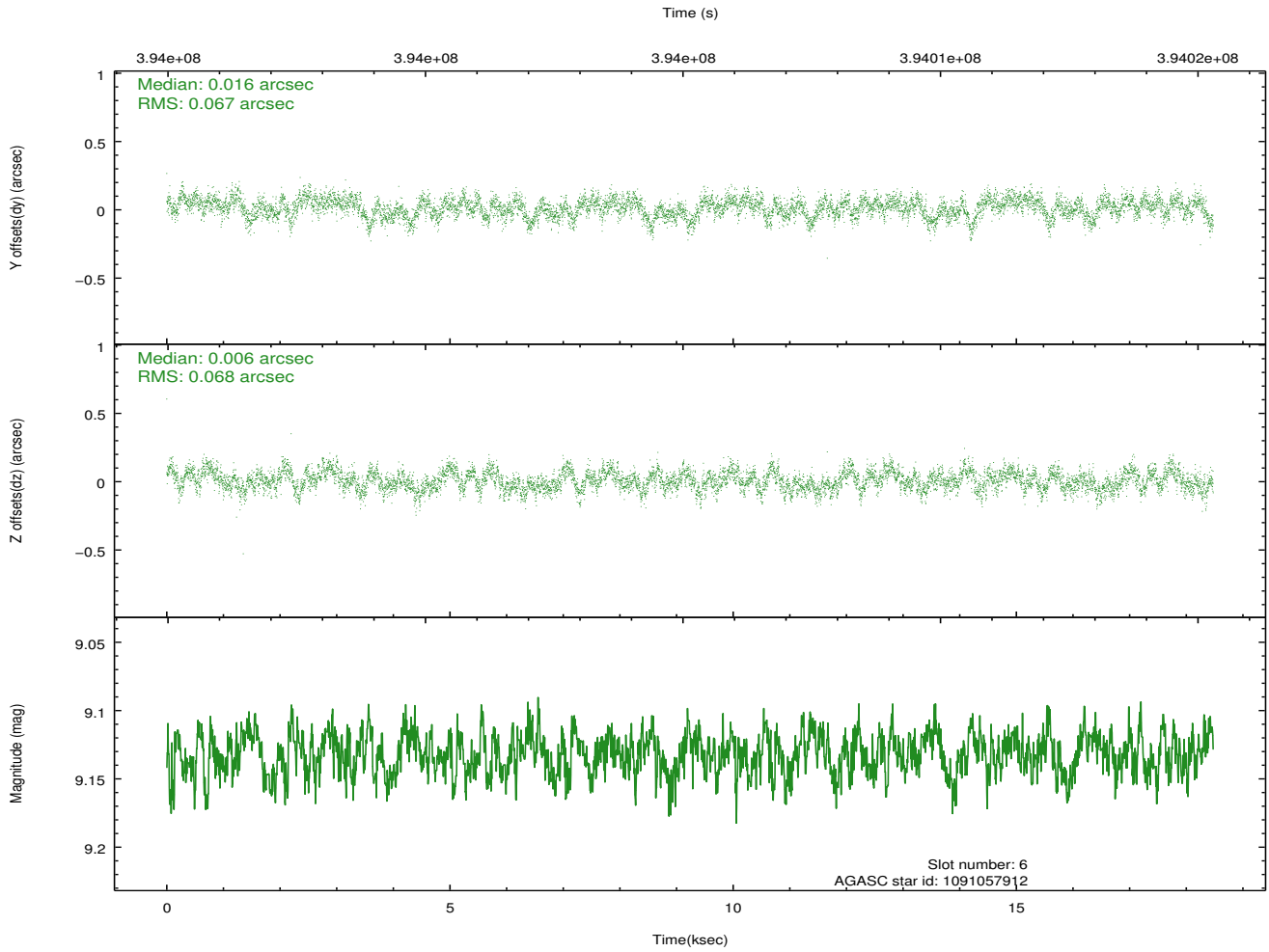
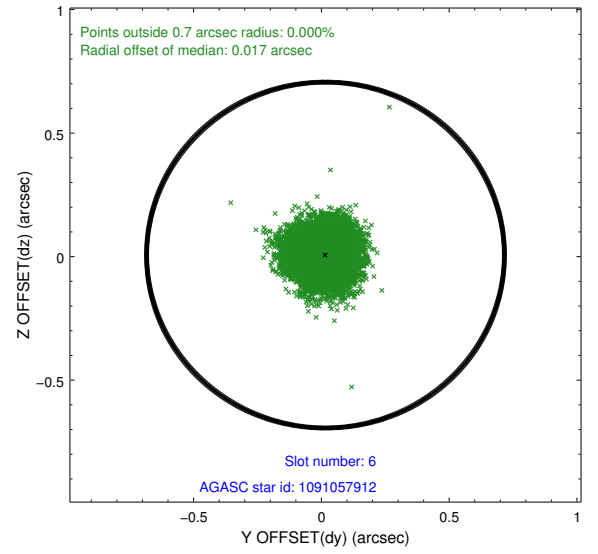
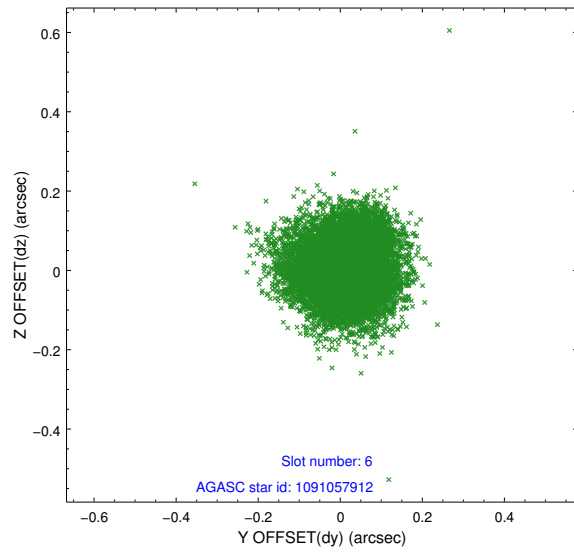




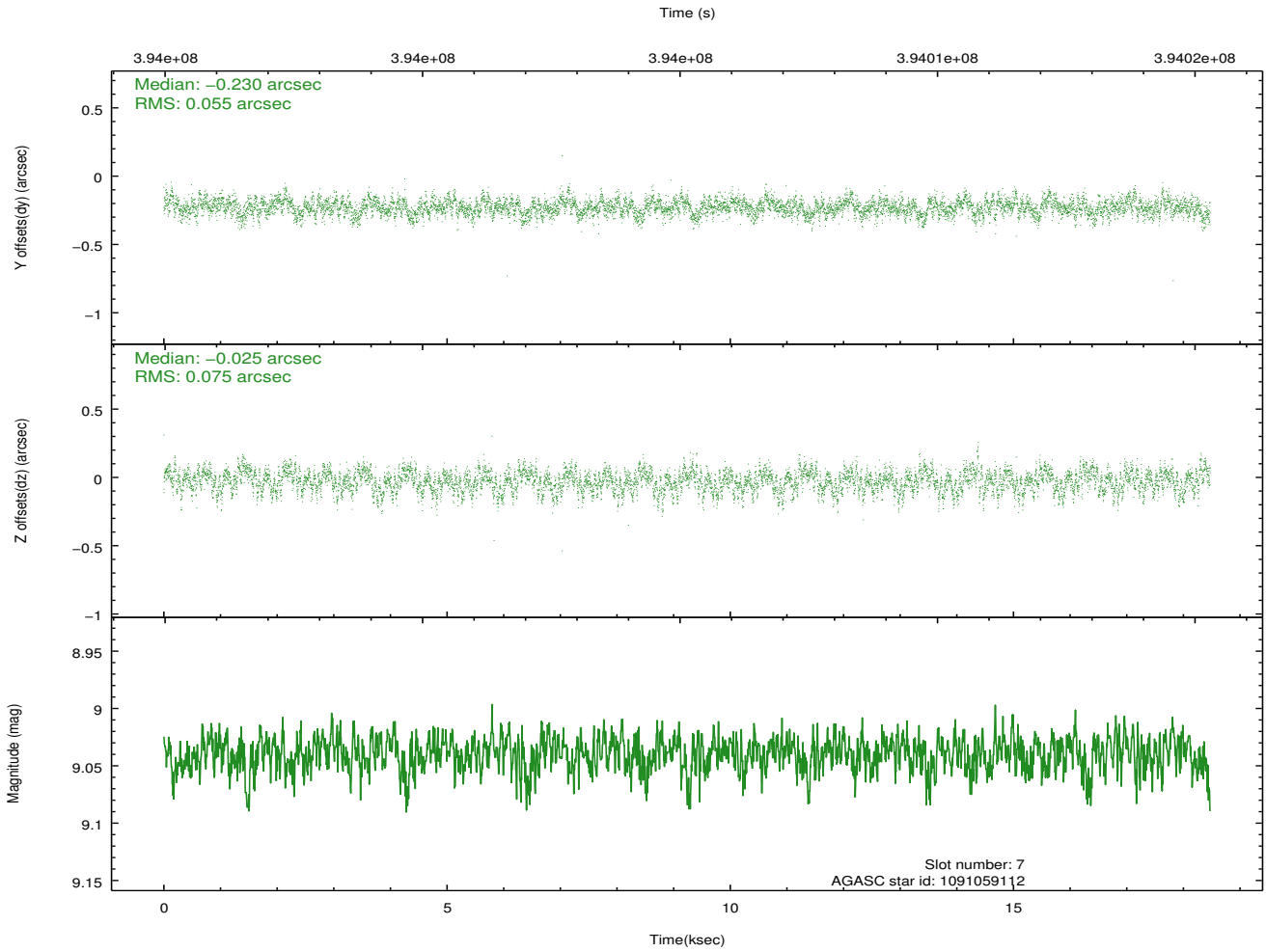
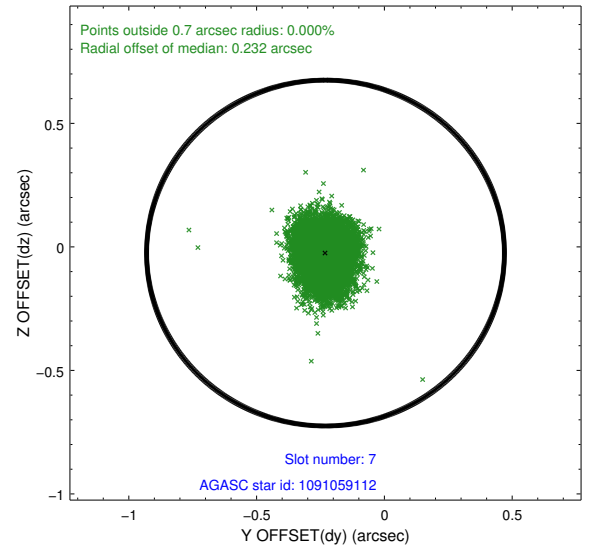
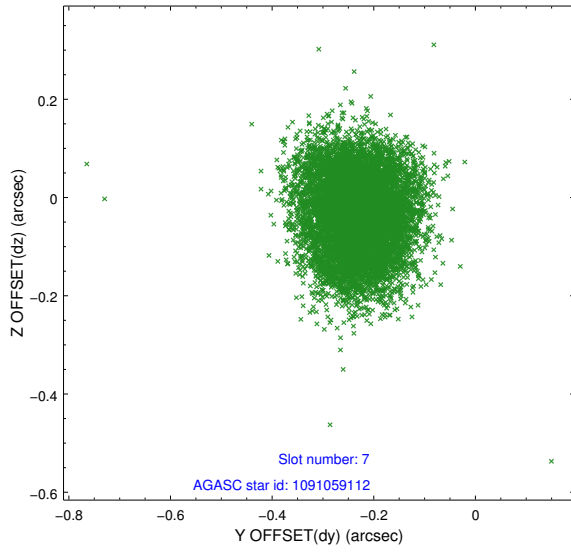
### 2.4.3 Slot 5



## 2.4.4 Slot 6

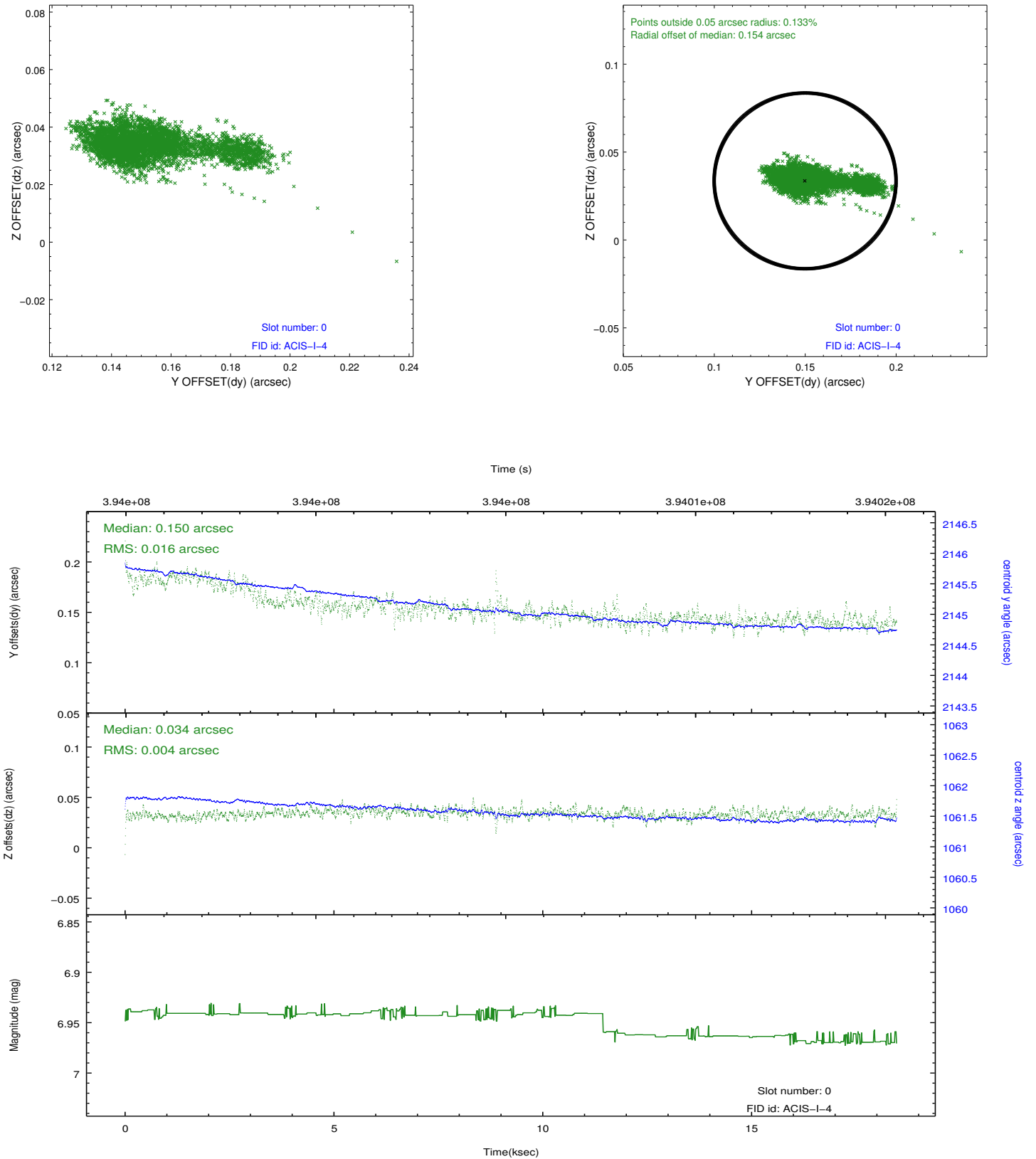


## 2.4.5 Slot 7

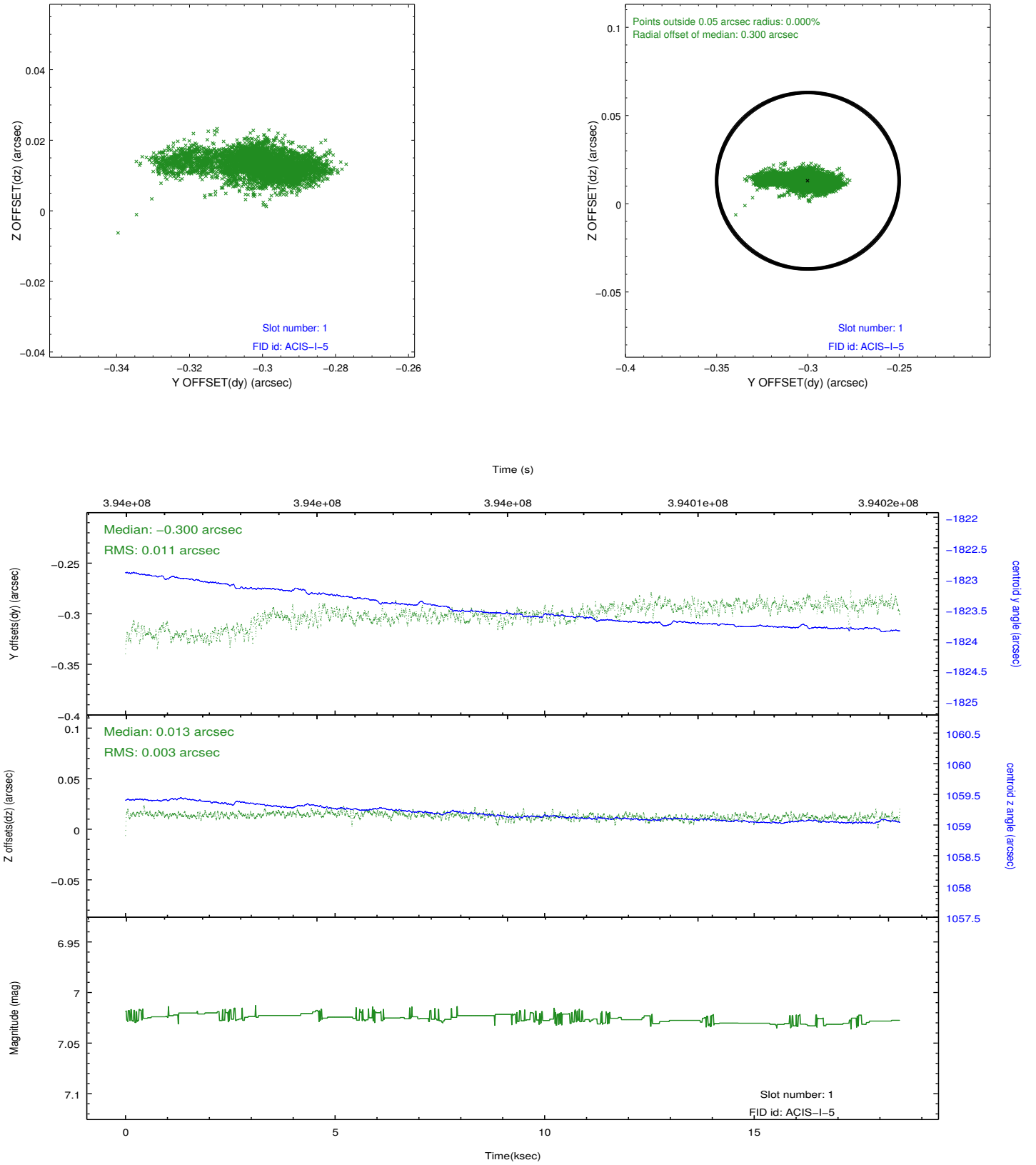


## 2.5 FID Slots

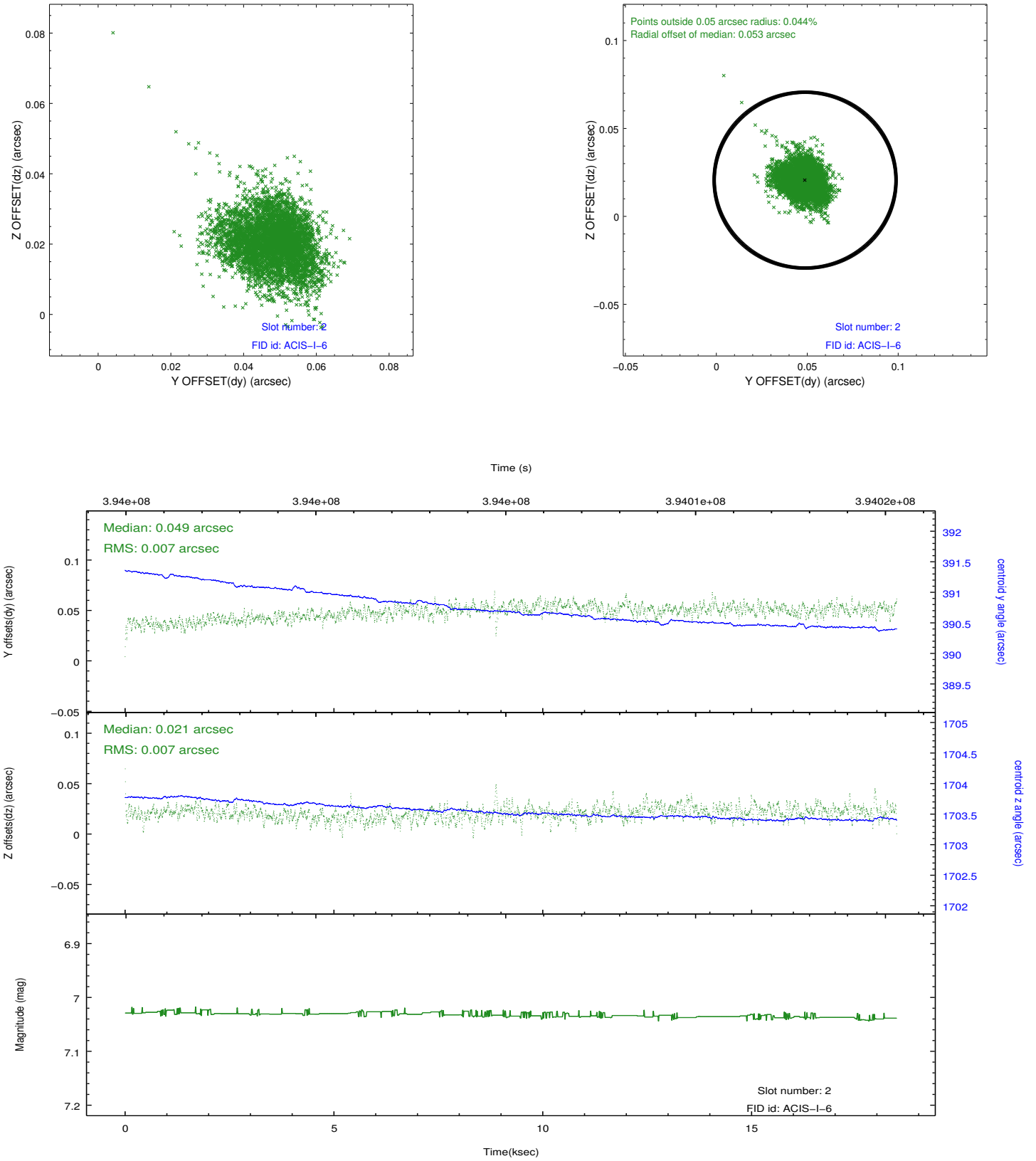
### 2.5.1 Slot 0



## 2.5.2 Slot 1



### 2.5.3 Slot 2



## **A Summary**

### **A.1 Status**

V&V Scientist	Jen Lauer
V&V Date (YYYY-MM-DD)	2012.07.06
V&V Edition	1
V&V Disposition and Status	OK
V&V Charge Time	18.060600138903

### **A.2 Comments**