

V&V Reference Report

L2 ASCDS Version : 8.4.5

Observation 12064 - L2 Version 2
Chandra X-Ray Center

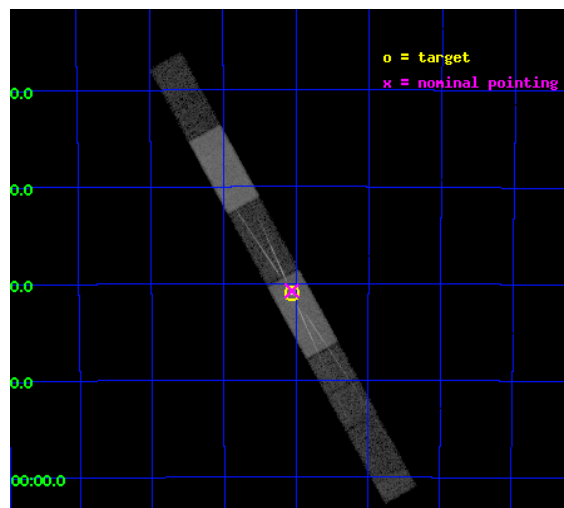
L2 Processing Date : Jun 18 2012

Contents

1	Front	2
2	OBI	3
2.1	OBI	3
2.1.1	Images	3
2.1.2	Bias	3
2.1.3	Parameters	4
2.1.4	Events	4
2.2	Compared Parameters	5
2.3	Aspect	6
2.4	Star Slots	9
2.4.1	Slot 3	9
2.4.2	Slot 4	10
2.4.3	Slot 5	11
2.4.4	Slot 6	12
2.5	FID Slots	13
2.5.1	Slot 0	13
2.5.2	Slot 1	14
2.5.3	Slot 2	15
3	Gratings	16
3.1	HEG Arm	16
3.2	MEG Arm	18
A	Summary	20
A.1	Status	20
A.2	Comments	20

1 Front

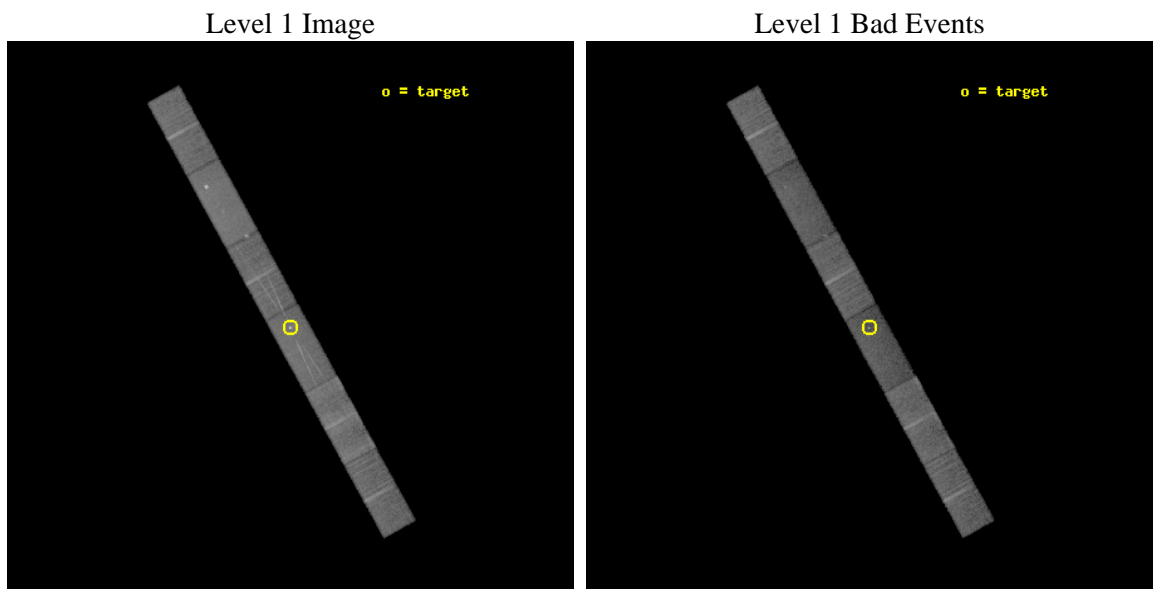
seq_num	200646	Sequence number
obs_id	12064	Observation id
title	Monitoring Dynamical Mass Loss from Eta Car with the HETG	Proposal
observer	Dr Michael Corcoran	Principal investigator
object	Eta Car	Source name
dtcycle	0	
cycle	P	events from which exps? Prim/Second/Both
ra_targ	161.265	Observer's specified target RA [deg]
dec_targ	-59.684528	Observer's specified target Dec [deg]
ra_nom	161.26452626469	Nominal RA [deg]
dec_nom	-59.679693020964	Nominal Dec [deg]
roll_nom	61.156212786327	Nominal Roll [deg]
revision	2	Processing version of data
ontime	18187.5	Sum of GTIs [s]
livetime	17703.142033951	Livetime [s]
ontime4	18187.5	Sum of GTIs [s]
ontime5	18187.5	Sum of GTIs [s]
ontime6	18187.5	Sum of GTIs [s]
ontime7	18187.5	Sum of GTIs [s]
ontime8	18187.5	Sum of GTIs [s]
ontime9	18187.5	Sum of GTIs [s]
l2events	140135	Number of level 2 events



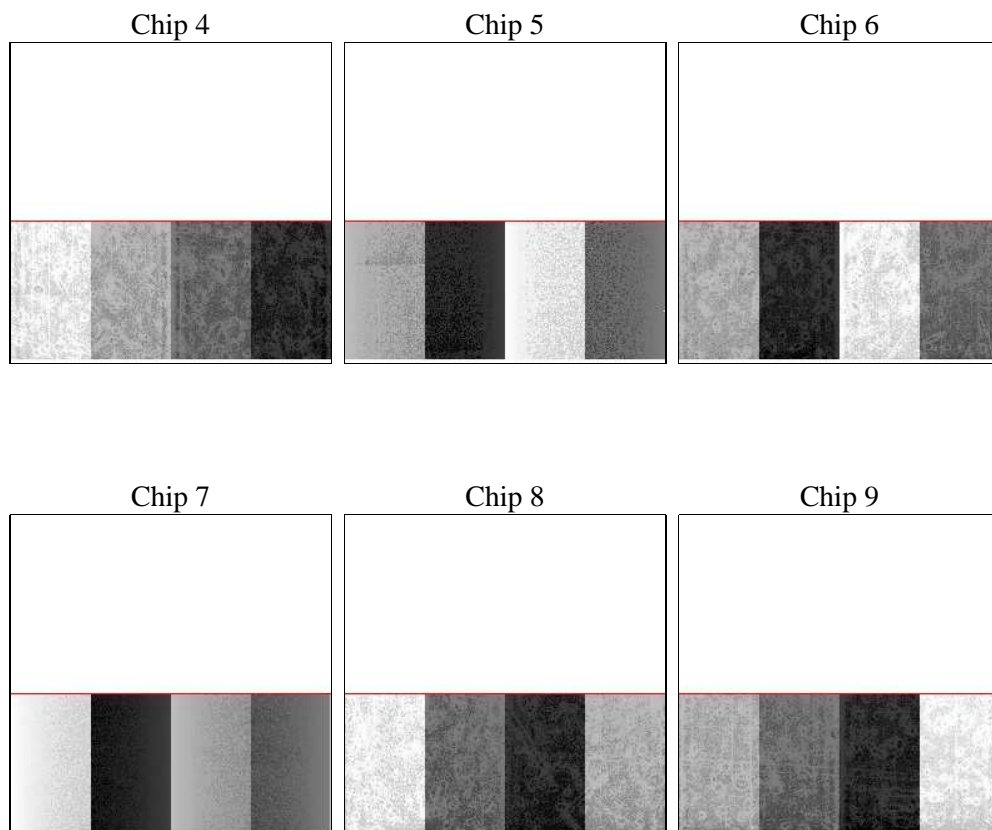
2 OBI

2.1 OBI

2.1.1 Images



2.1.2 Bias



2.1.3 Parameters

obi_num	0	Obi number	sched_exp_time	18100.000000	[s] Scheduled observation exposure time
ascdsver	8.4.5	Processing system revision	ontime	18187.5	Sum of GTIs [s]
caldsver	4.4.10	 	ontime4	18187.5	Sum of GTIs [s]
date	2012-06-18T19:00:43	Date and time of file creation	ontime5	18187.5	Sum of GTIs [s]
revision	2	Processing version of data	ontime6	18187.5	Sum of GTIs [s]
			ontime7	18187.5	Sum of GTIs [s]
			ontime8	18187.5	Sum of GTIs [s]
			ontime9	18187.5	Sum of GTIs [s]
			l1events	538356	Number of level 1 events

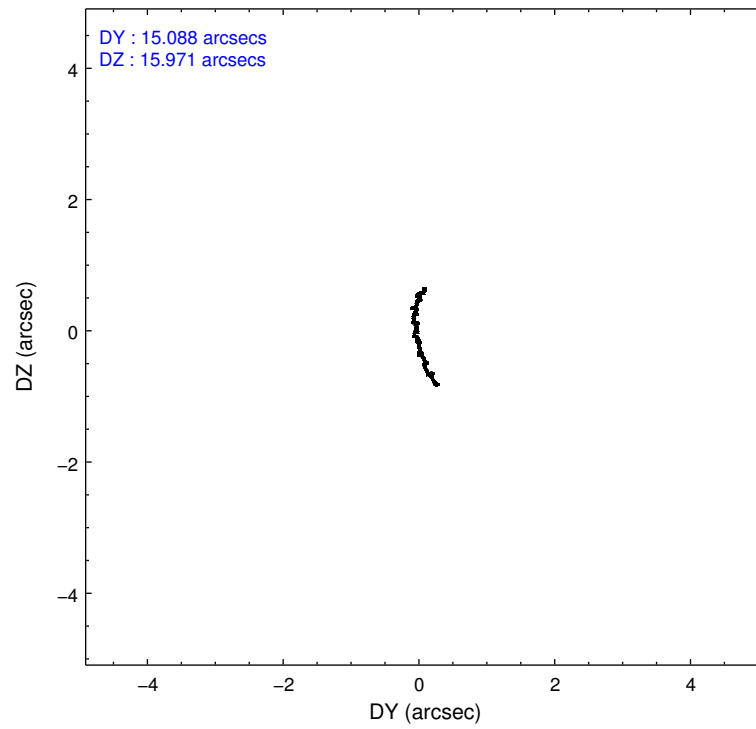
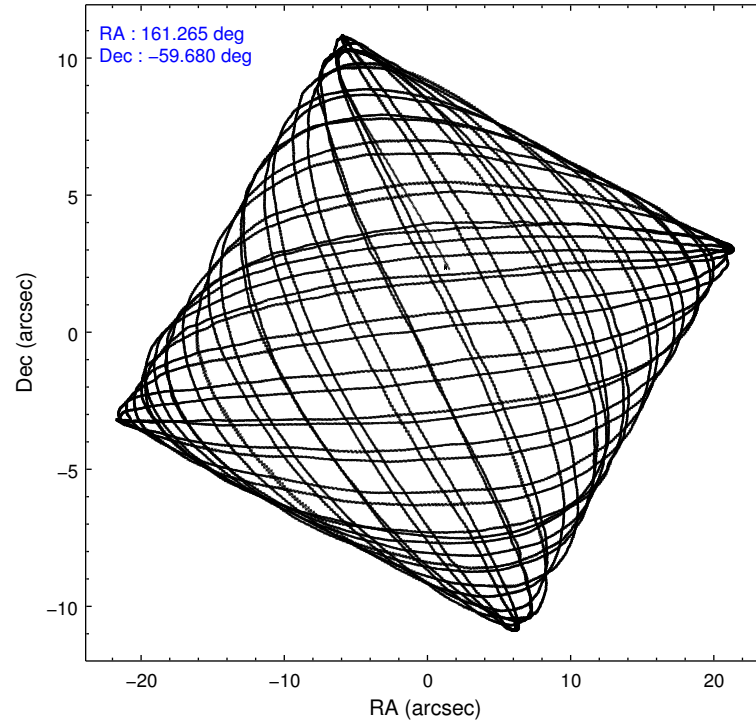
2.1.4 Events

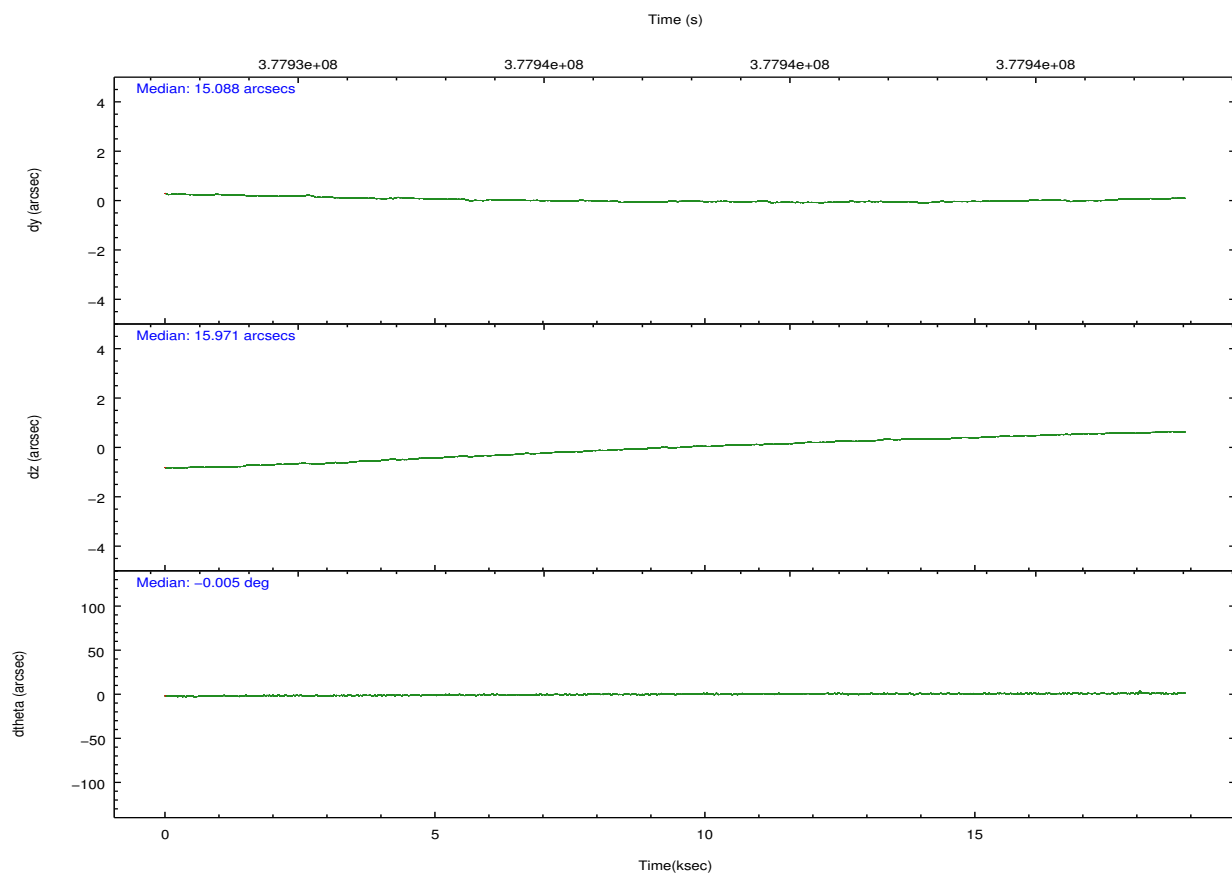
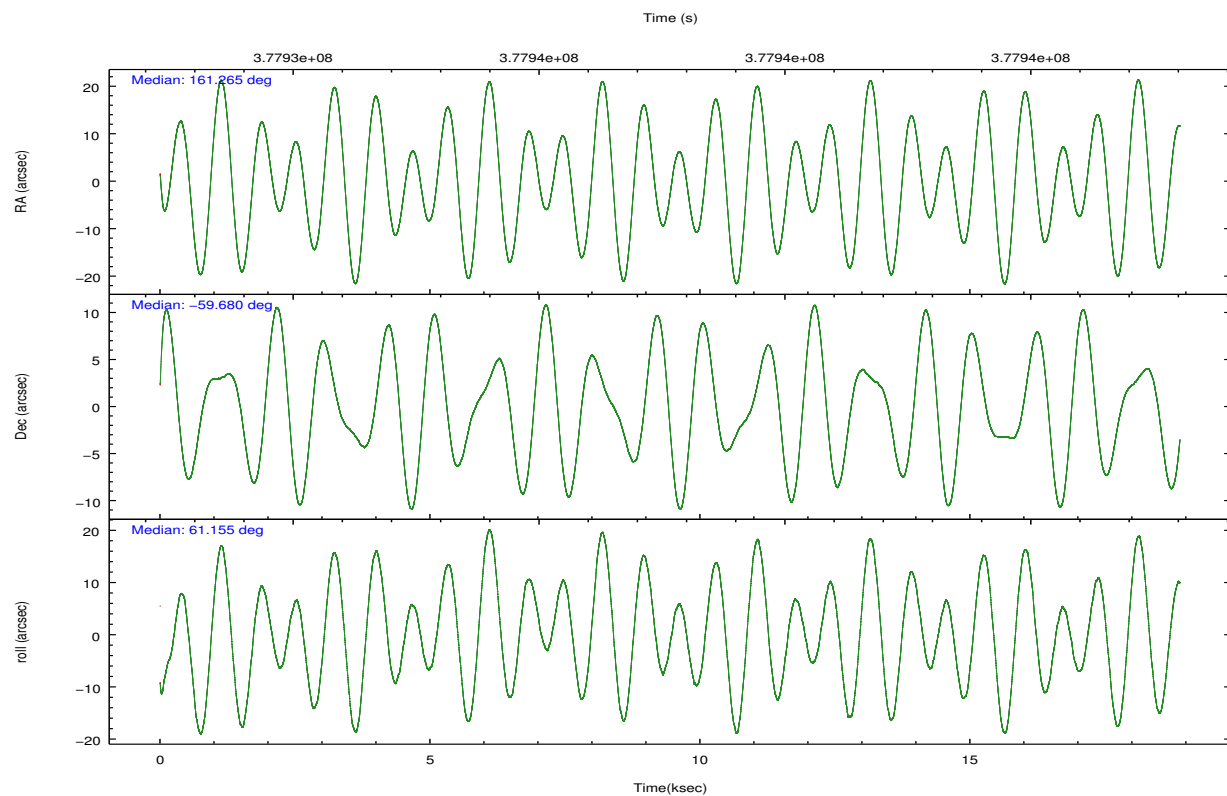
	ccd 4	ccd 5	ccd 6	ccd 7	ccd 8	ccd 9		ccd 4	ccd 5	ccd 6	ccd 7	ccd 8	ccd 9
level 1 events	82288	104612	81950	97664	100714	71128	grade 0 events	3545	9442	7235	6605	9019	3702
rejected events	72946	49135	67580	43589	72805	61640		4%	9%	8%	6%	8%	5%
rejected %	88%	46%	82%	44%	72%	86%	grade 1 events	48	617	35	204	74	40
								0%	0%	0%	0%	0%	0%
							grade 2 events	2170	14454	2560	11895	5981	1857
								2%	13%	3%	12%	5%	2%
							grade 3 events	1049	3245	1347	5412	2961	1140
								1%	3%	1%	5%	2%	1%
							grade 4 events	1081	3104	1295	5361	2655	1100
								1%	2%	1%	5%	2%	1%
							grade 5 events	2661	8665	2805	8681	4030	3046
								3%	8%	3%	8%	4%	4%
							grade 6 events	1497	25239	1933	24805	7293	1689
								1%	24%	2%	25%	7%	2%
							grade 7 events	70237	39846	64740	34701	68701	58554
								85%	38%	78%	35%	68%	82%

2.2 Compared Parameters

Parameter	Planned	Actual	Parameter	Planned	Actual
Instrument	ACIS	ACIS	Obspar format version number	7	7
Detector	ACIS-456789	ACIS-456789	Obspar file type	PREDICTED	ACTUAL
Grating	HETG	HETG	Obspar update status	NONE	UPDATED
Data mode	FAINT	FAINT	CCD I0 on	N	N
Observation mode	POINTING	POINTING	CCD I1 on	N	N
[deg] Pointing RA	161.266366	161.2645262646887	CCD I2 on	N	N
[deg] Pointing Dec	-59.707011	-59.67969302096411	CCD I3 on	N	N
[deg] Pointing Roll	61.001186	61.15621278632734	CCD S0 on	O1	Y
[mm] SIM focus pos	-0.684267	-0.6828225247311905	CCD S1 on	Y	Y
[mm] SIM defocus	0	0.001444936568705701	CCD S2 on	Y	Y
[mm] SIM translation stage pos	-183.332523	-183.3212429520412	CCD S3 on	Y	Y
[mm] SIM translation stage offset	-6.8	-6.811279630966652	CCD S4 on	Y	Y
[s] Observation start time (MET)	377929016.184000	377927286.13559	CCD S5 on	O2	Y
Observation start date	2009-12-23T04:15:50	2009-12-23T03:48:06	Number of optional ACIS chips dropped	0	0
[s] Observation end time (MET)	377947116.184000	377948023.93663	On-chip summing requested	N	N
Observation end date	2009-12-23T09:17:30	2009-12-23T09:33:43	Subarray requested	CUSTOM	CUSTOM
Read mode	TIMED	TIMED	Subarray start row	15	15
			Subarray row count	440	440
			Alternating exposures requested	N	N
			[s] Primary exposure time	0.000000	1.5

2.3 Aspect



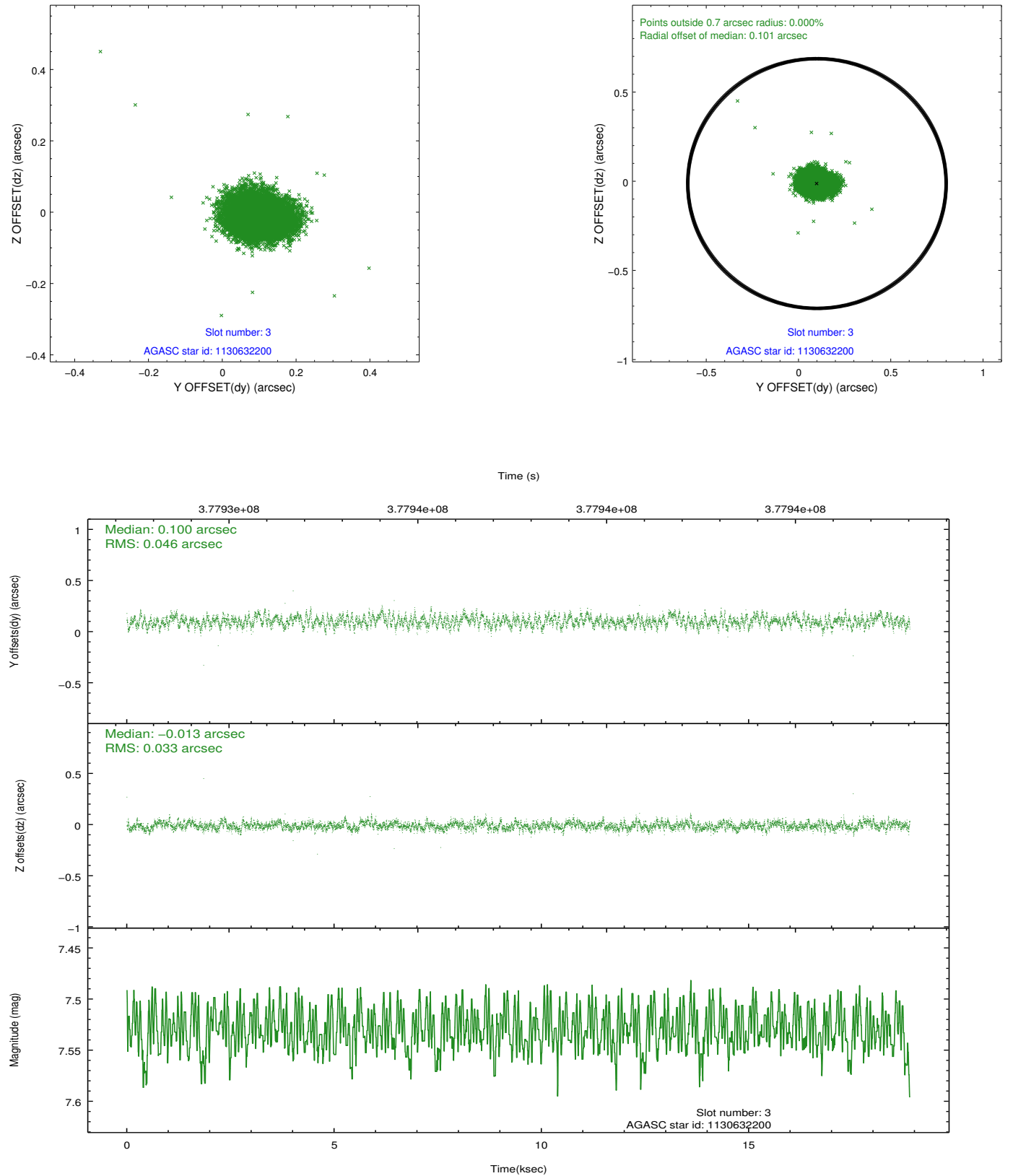


Slot Statistics

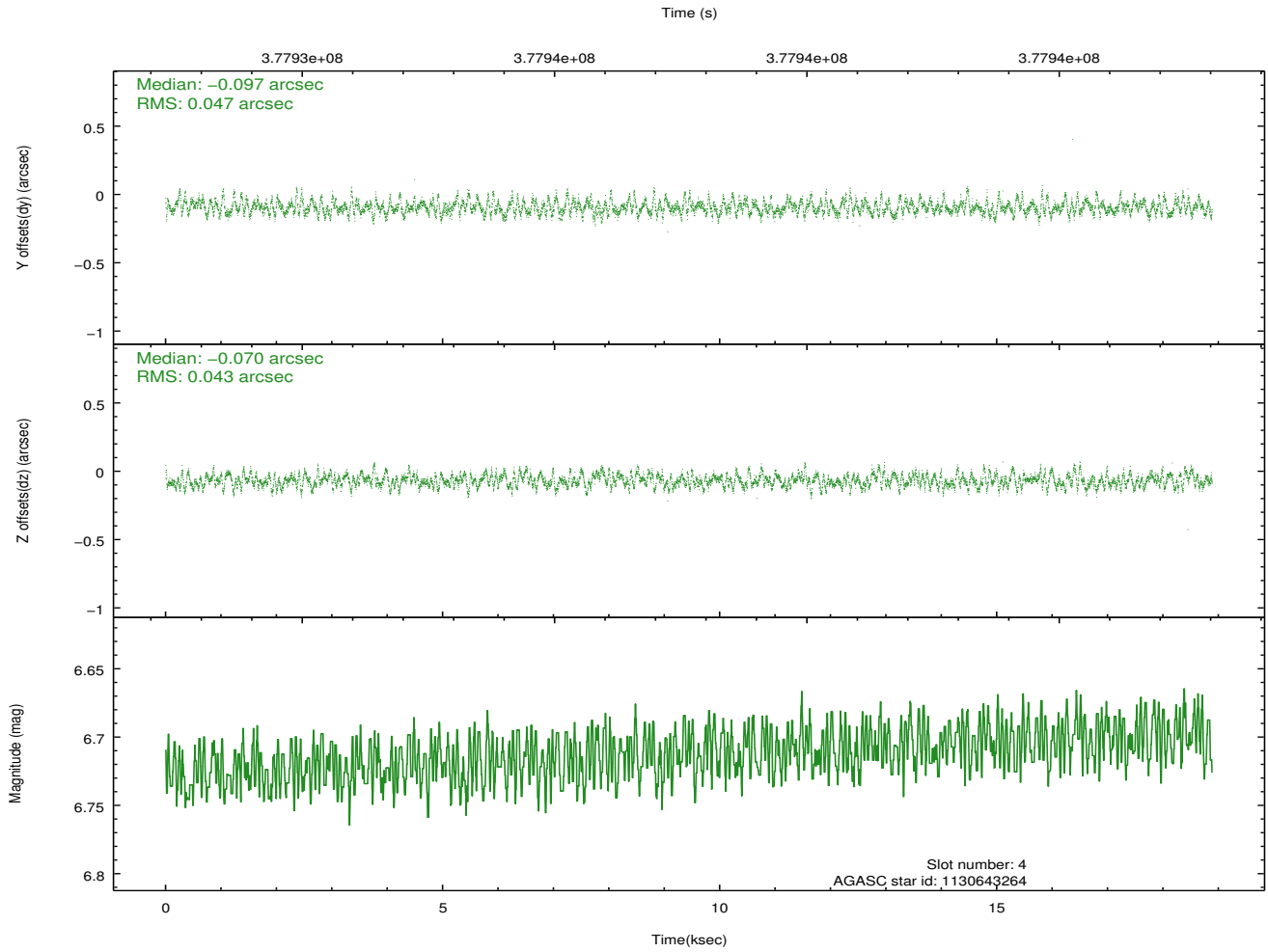
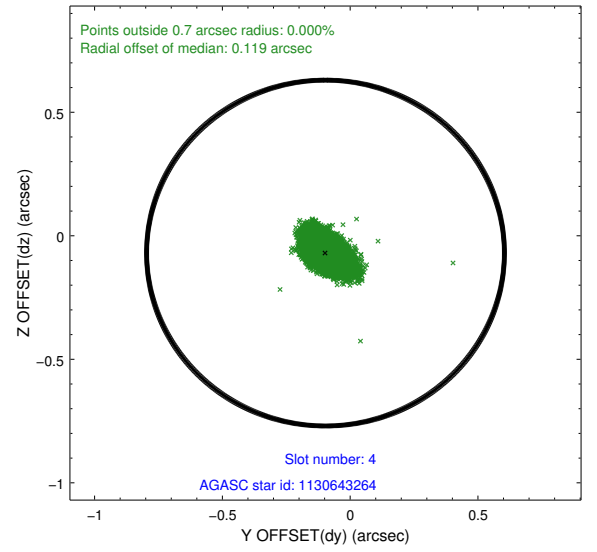
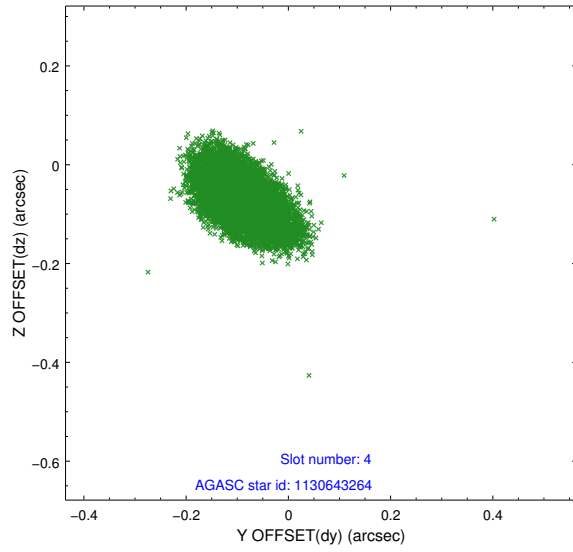
slot	status	id	mag	n_pts	med_dy	med_dz	dr1	dr2	ra	dec	mean_y	mean_z
0	FID	ACIS-S-1	6.95	4607	0.053	0.087	0.025	0.033	0.000000	0.000000	928.46	-1873.24
1	FID	ACIS-S-4	6.94	4607	0.151	-0.081	0.021	0.028	0.000000	0.000000	2146.09	30.49
2	FID	ACIS-S-5	6.99	4607	-0.230	0.005	0.008	0.022	0.000000	0.000000	-1820.41	24.43
3	GUIDE	1130632200	7.53	9213	0.100	-0.013	0.060	0.096	161.433843	-59.407820	1090.69	253.77
4	GUIDE	1130643264	6.71	9214	-0.097	-0.070	0.066	0.115	160.322990	-59.676912	-747.00	1546.34
5	GUIDE	1130632064	8.51	9207	-0.179	-0.136	0.083	0.132	160.452382	-59.130948	1076.76	2316.13
6	GUIDE	1174012960	7.16	9212	0.170	0.216	0.060	0.098	160.855674	-60.332270	-2325.08	-451.72
7	UNUSED		0.00	0	0.000	0.000	0.000	0.000	0.000000	0.000000	0.00	0.00

2.4 Star Slots

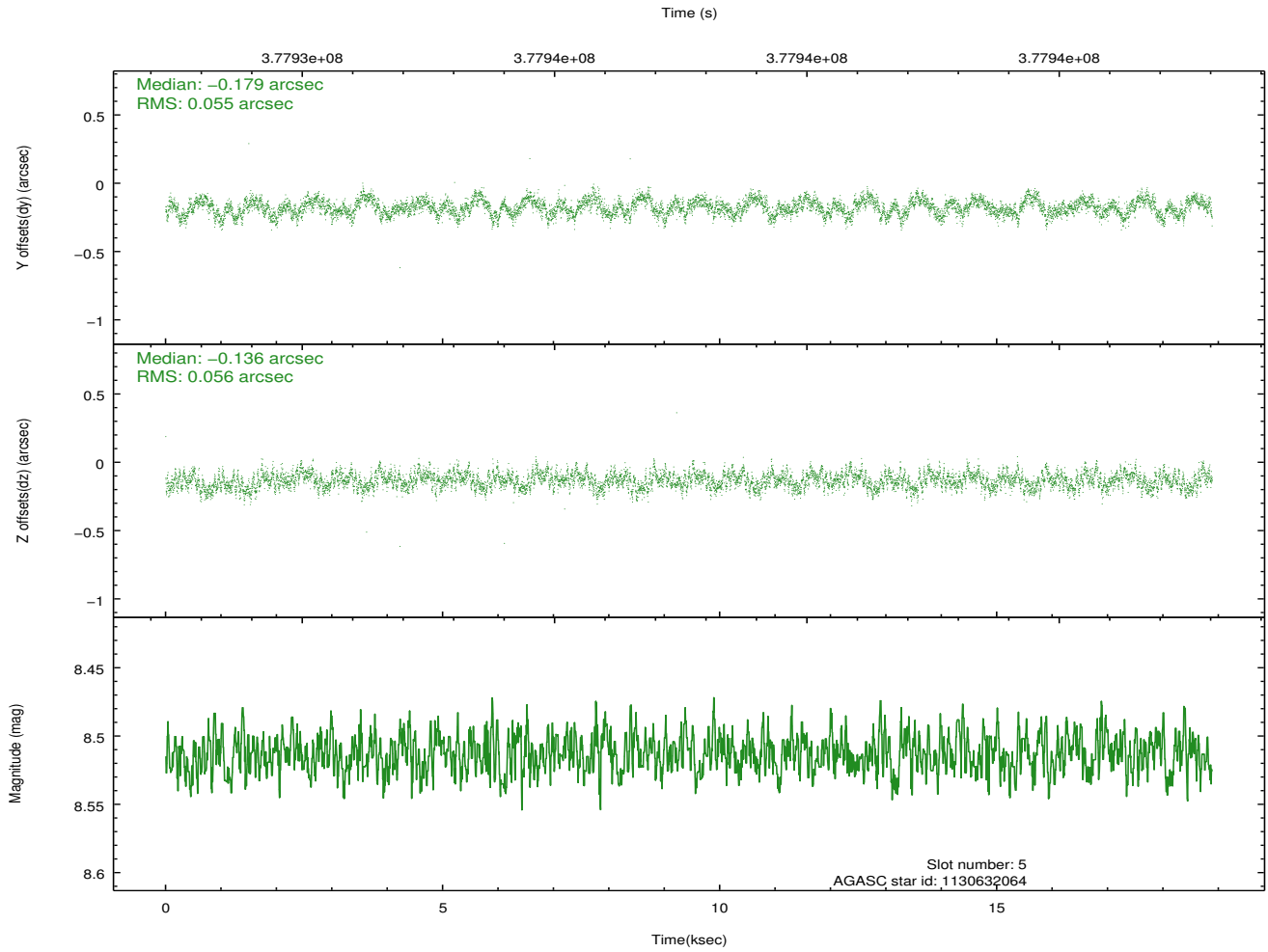
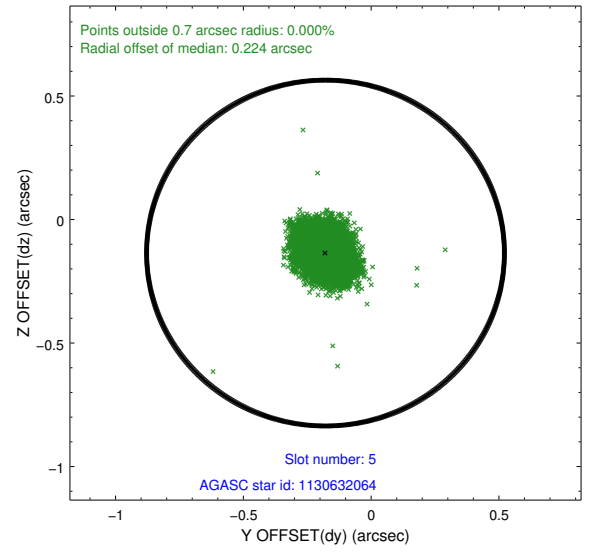
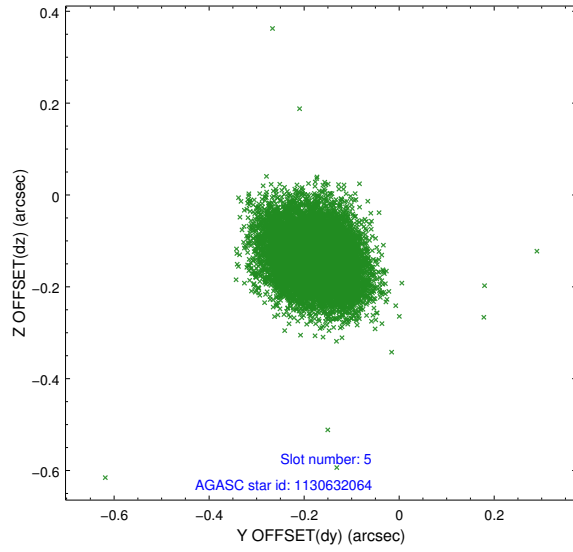
2.4.1 Slot 3



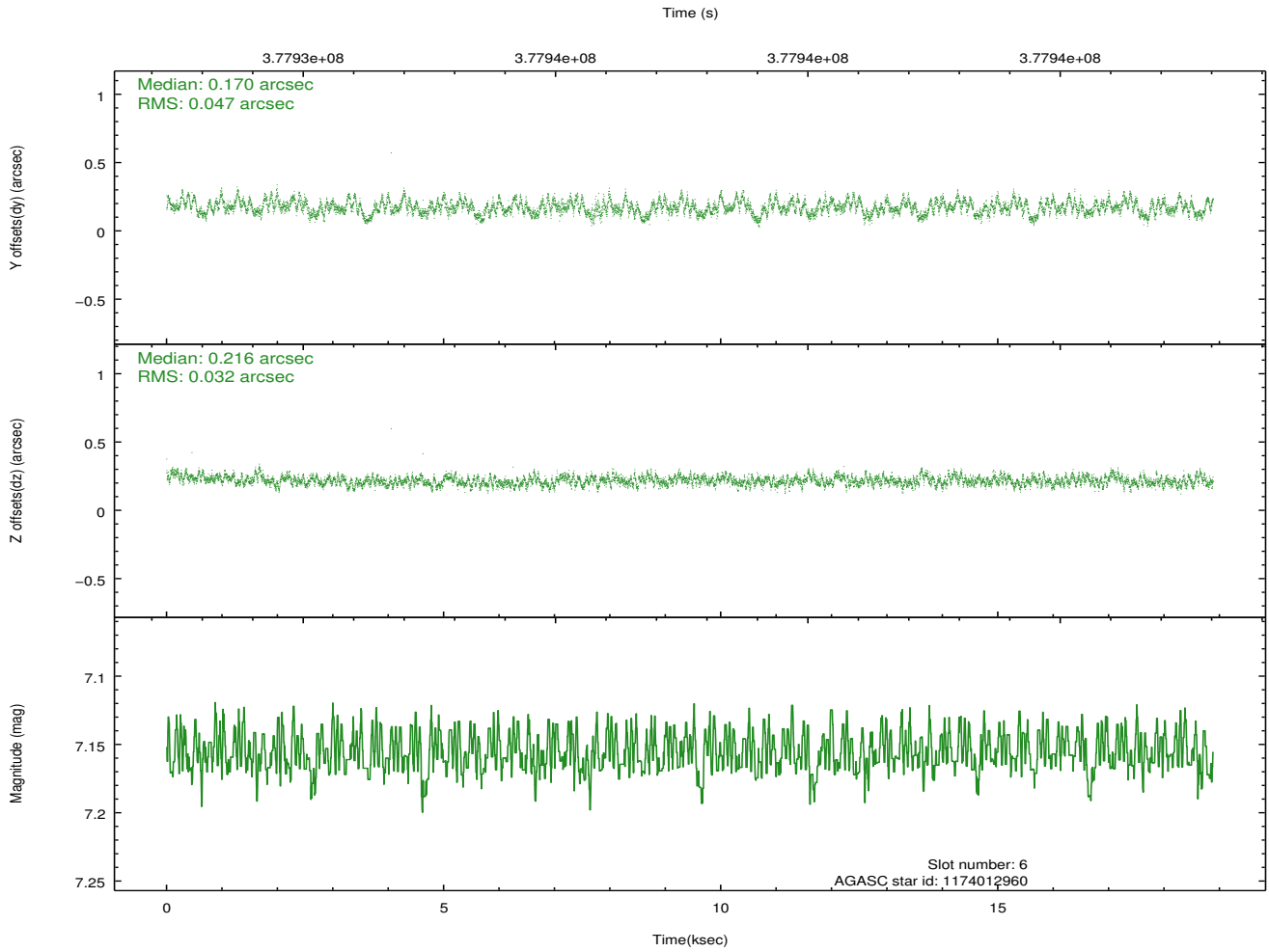
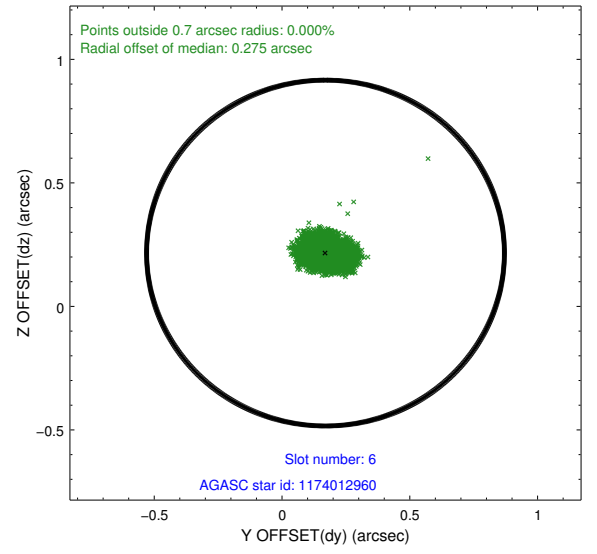
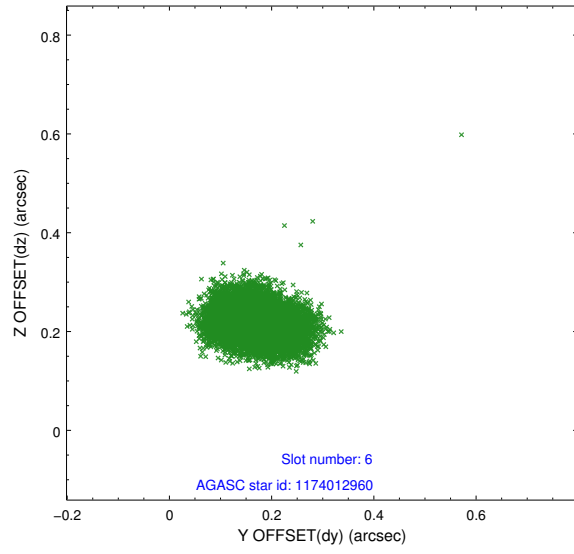
2.4.2 Slot 4



2.4.3 Slot 5

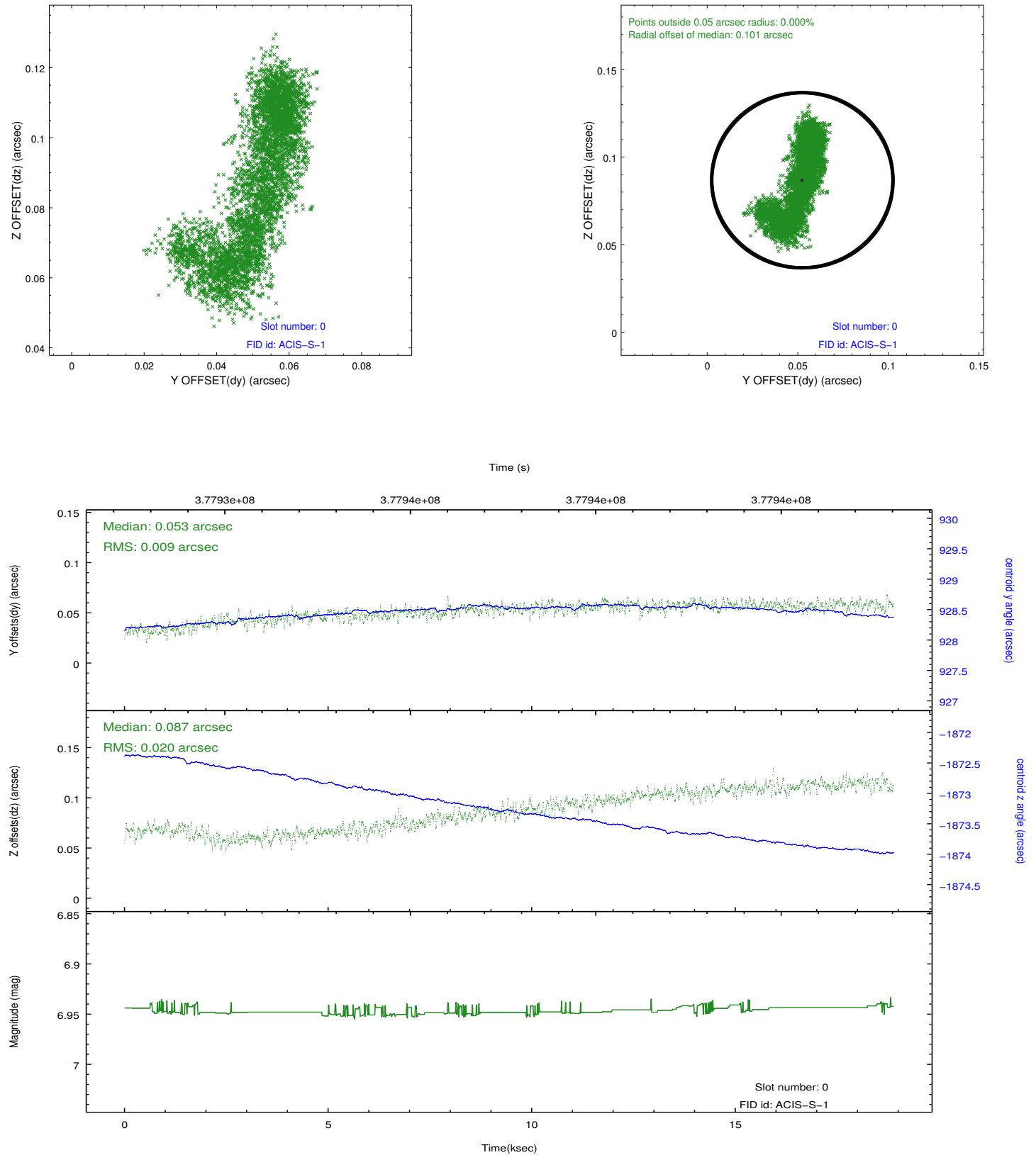


2.4.4 Slot 6

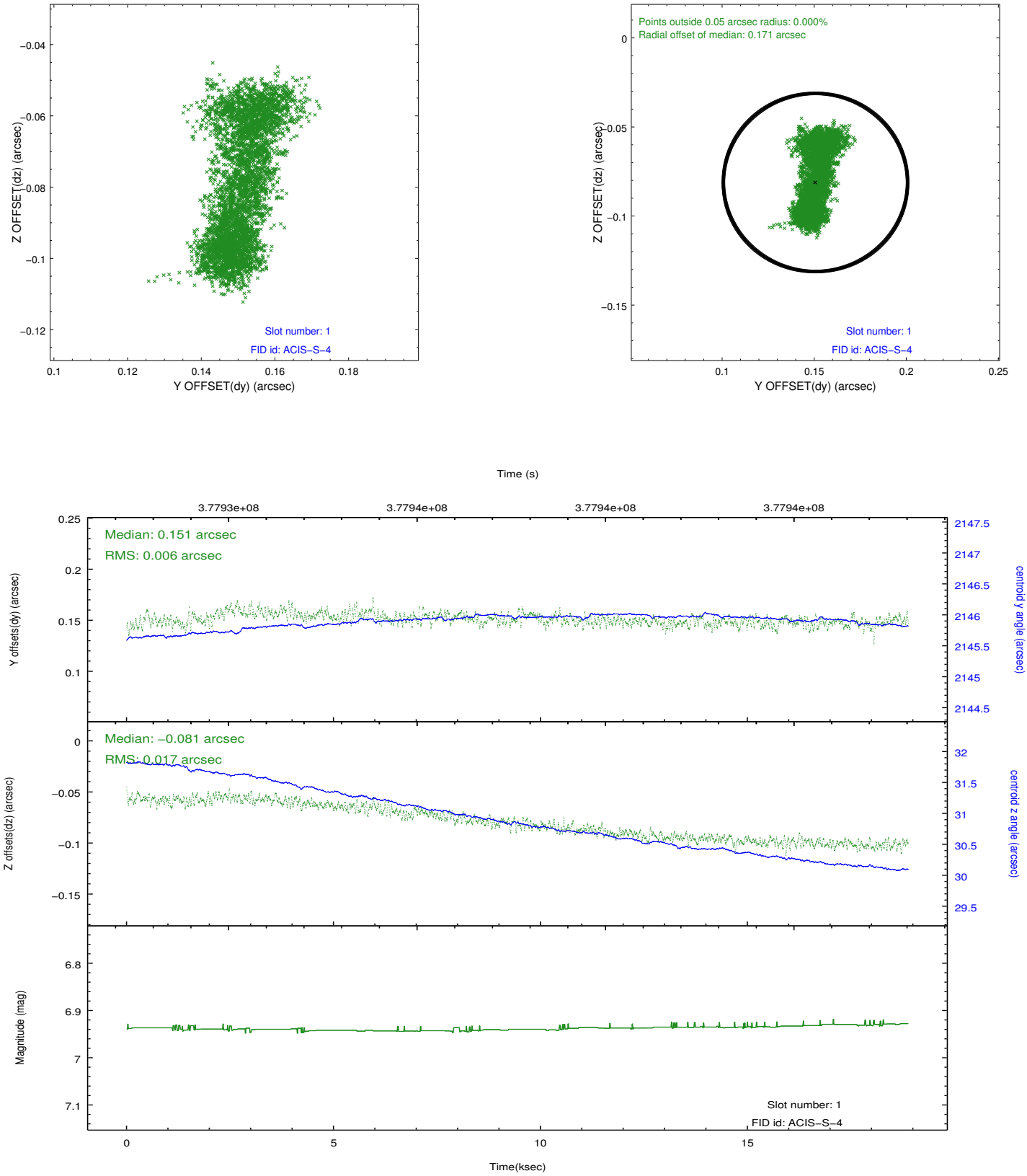


2.5 FID Slots

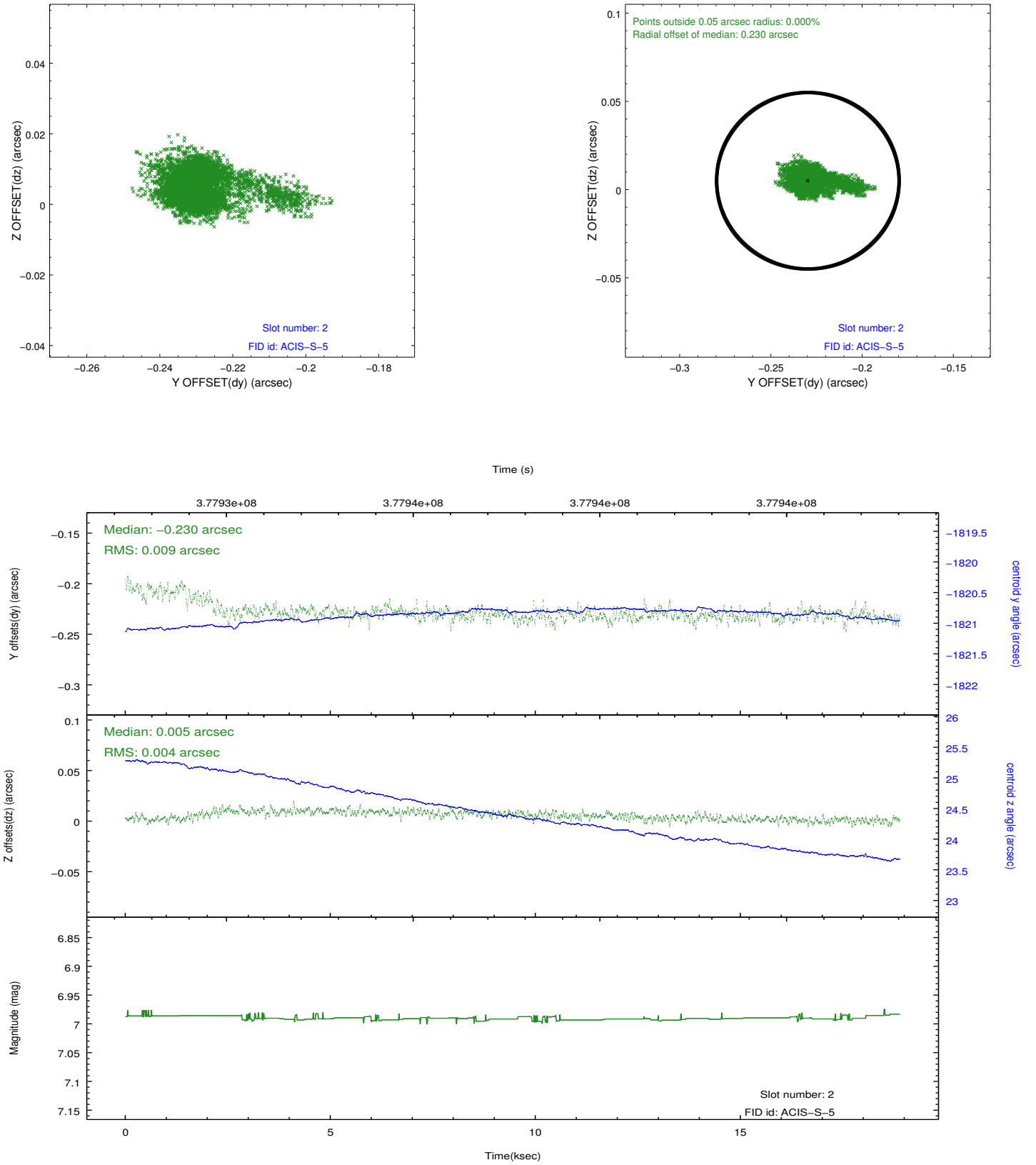
2.5.1 Slot 0



2.5.2 Slot 1

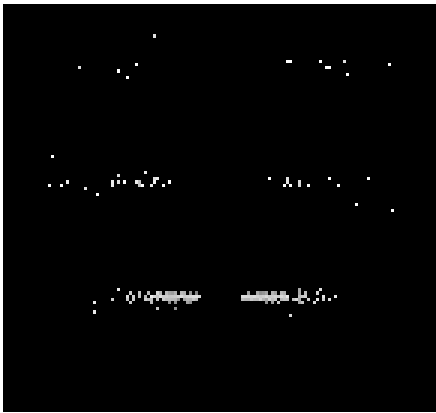


2.5.3 Slot 2

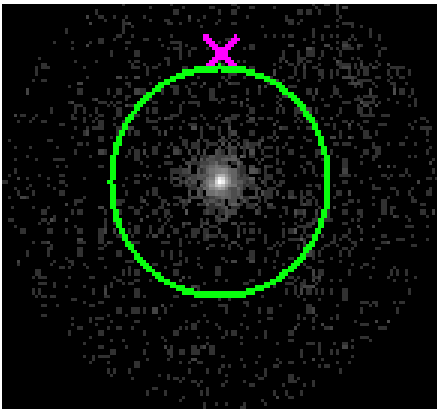


3 Gratings

3.1 HEG Arm



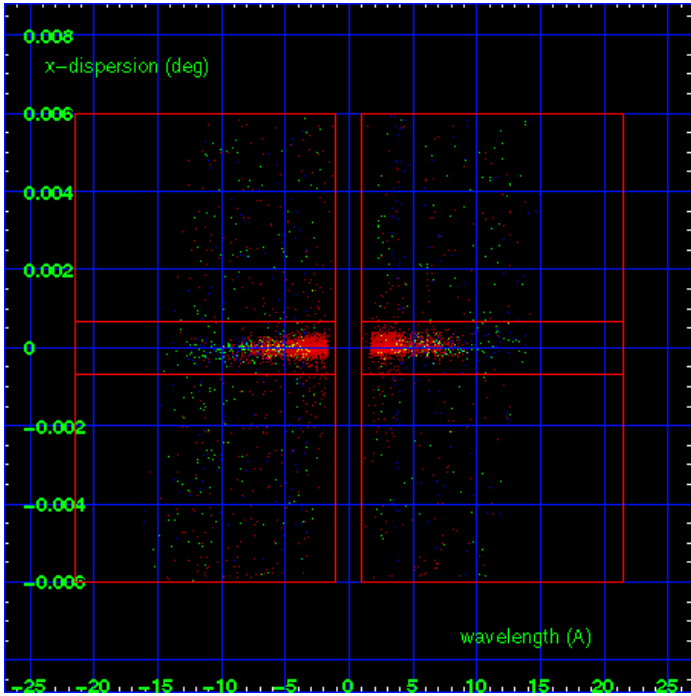
HEG Order Sort 123



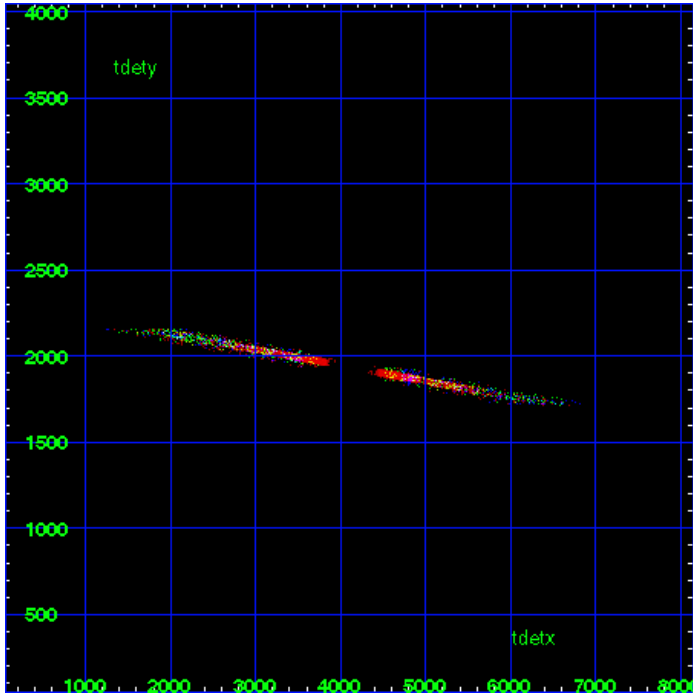
HEG Zero Order



HEG Order Sort ALL

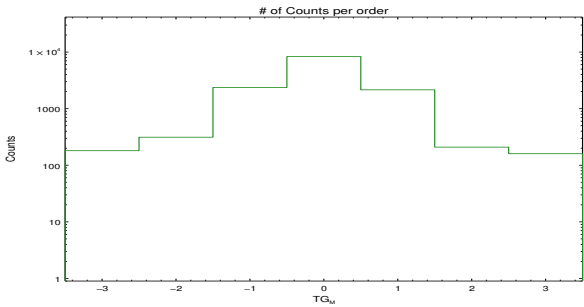


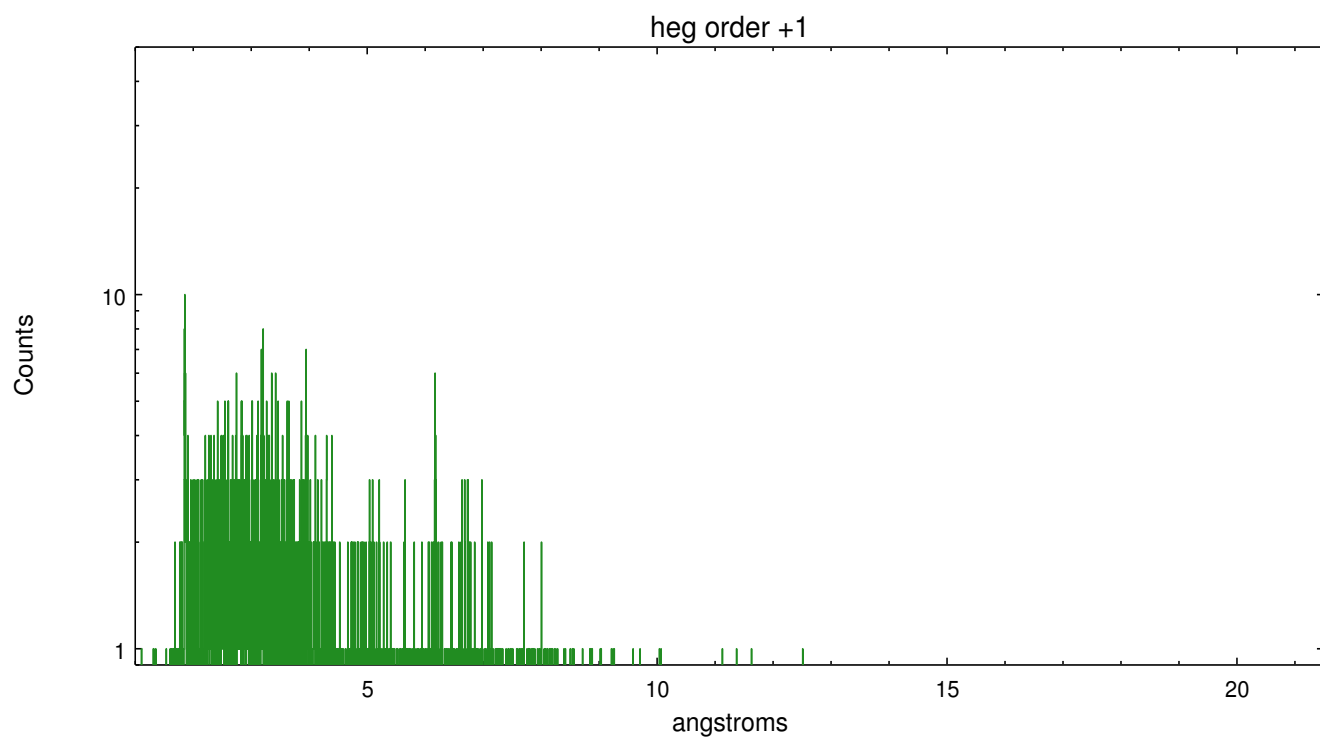
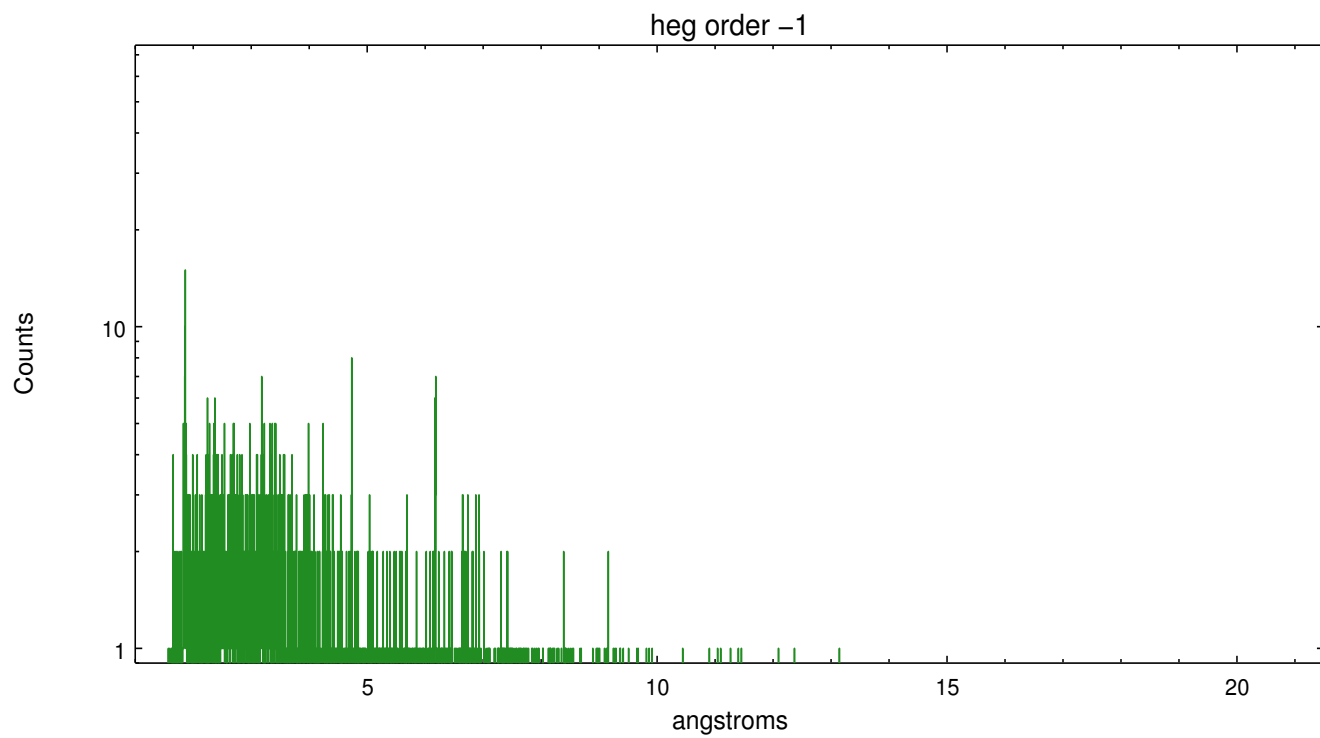
Spot Image HEG



Full Detector HEG

	order -3	order -2	order -1	order 0	order 1	order 2	order 3
Events	181	313	2365	8311	2152	209	160

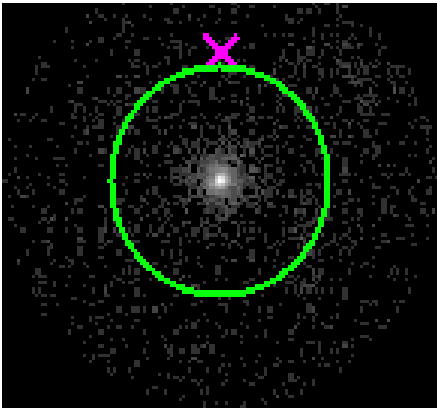




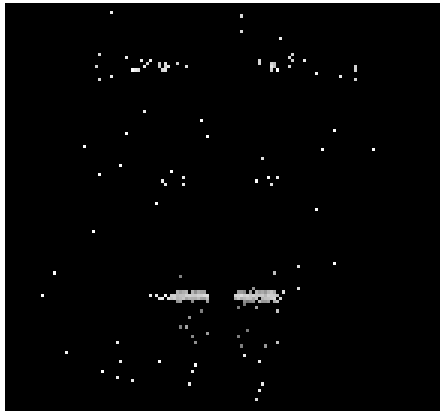
3.2 MEG Arm



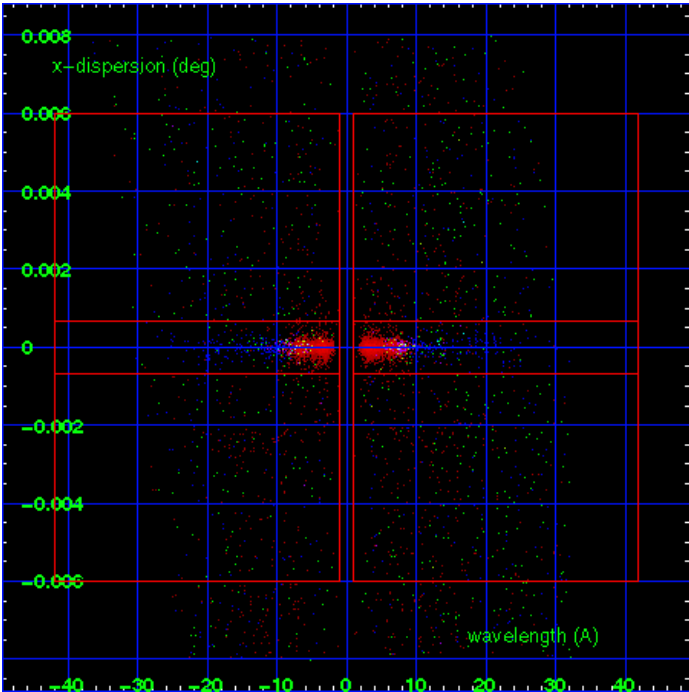
MEG Order Sort 123



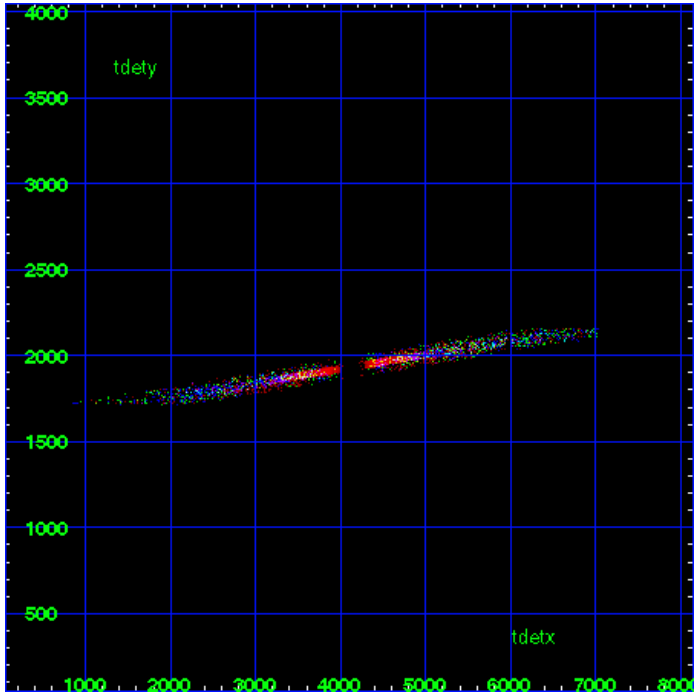
MEG Zero Order



MEG Order Sort ALL

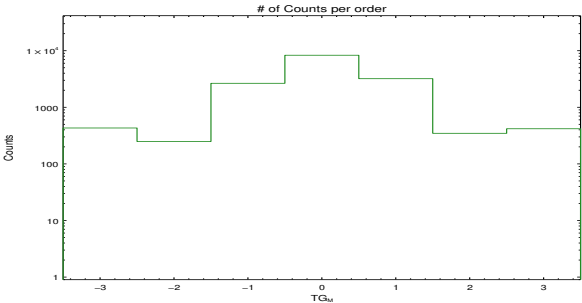


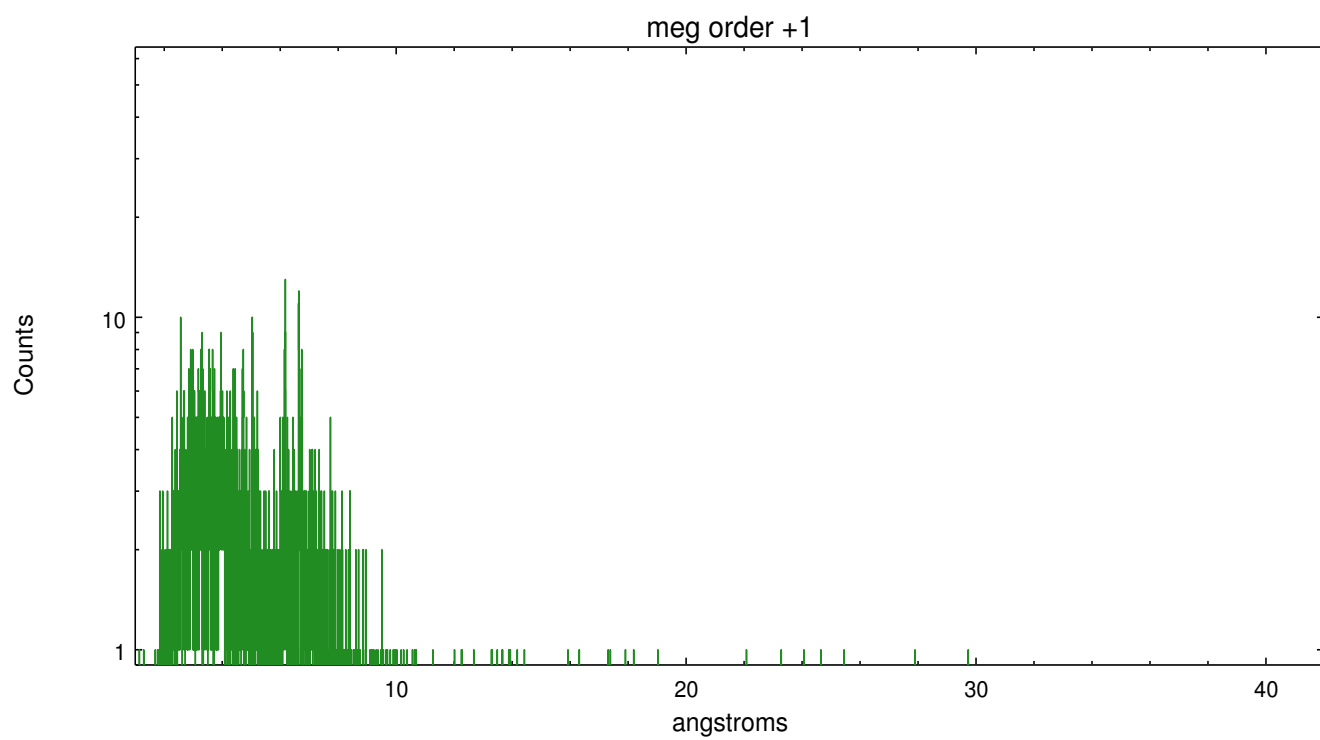
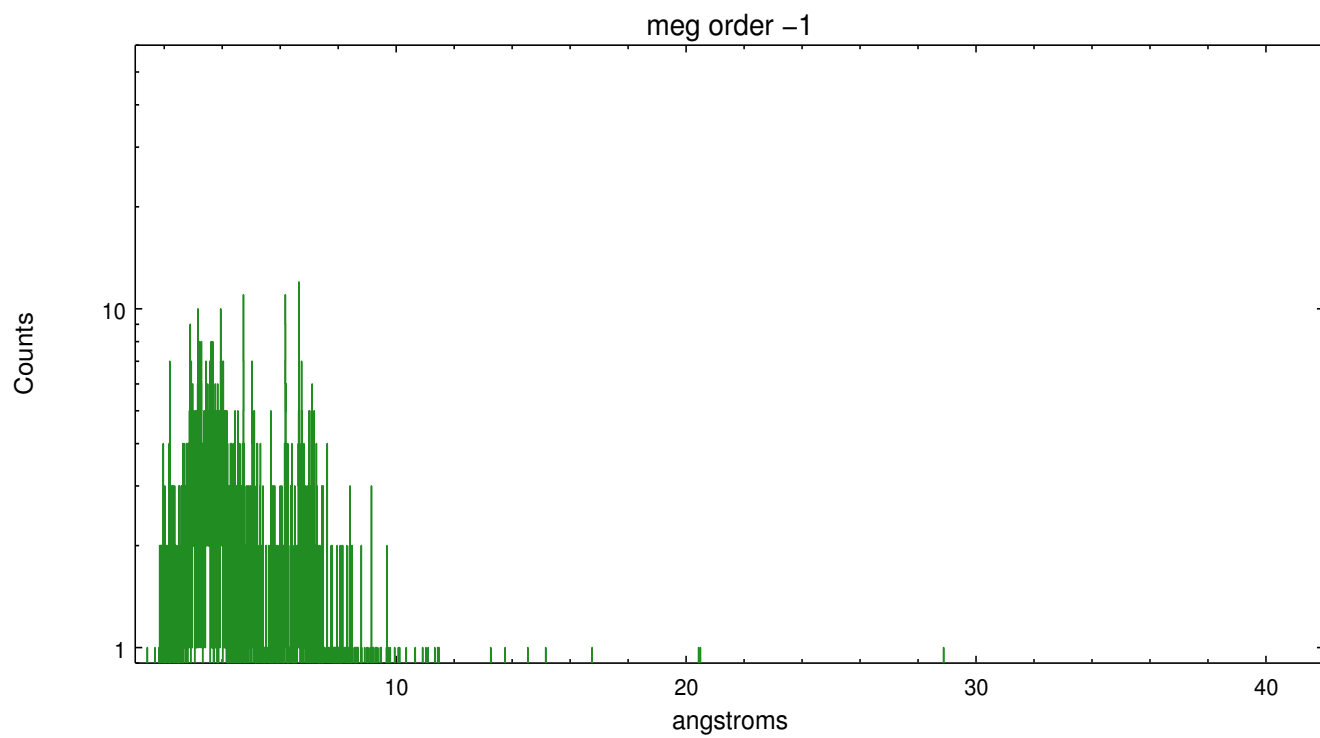
Spot Image MEG



Full Detector MEG

	order -3	order -2	order -1	order 0	order 1	order 2	order 3
Events	431	249	2653	8311	3204	347	418





A Summary

A.1 Status

V&V Scientist	Joy Nichols
V&V Date (YYYY-MM-DD)	2012.06.19
V&V Edition	1
V&V Disposition and Status	OK
V&V Charge Time	18.1875

A.2 Comments

Spatially complex field. Extraction centered on zeroth order position that was automatically selected by the software (tgdetect).

===

Optical photometry of target in guide star slot 7.