

V&V Reference Report

L2 ASCDS Version : 8.4.5

Observation 10484 - L2 Version 2
Chandra X-Ray Center

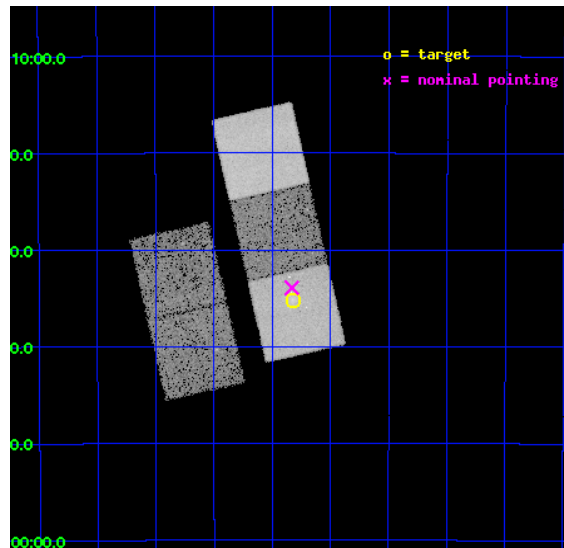
L2 Processing Date : Jun 11 2012

Contents

1	Front	2
2	OBI	3
2.1	OBI	3
2.1.1	Images	3
2.1.2	Bias	3
2.1.3	Parameters	4
2.1.4	Events	4
2.2	Compared Parameters	5
2.3	Aspect	6
2.4	Star Slots	9
2.4.1	Slot 3	9
2.4.2	Slot 4	10
2.4.3	Slot 5	11
2.4.4	Slot 6	12
2.4.5	Slot 7	13
2.5	FID Slots	14
2.5.1	Slot 0	14
2.5.2	Slot 1	15
2.5.3	Slot 2	16
A	Summary	17
A.1	Status	17
A.2	Comments	17

1 Front

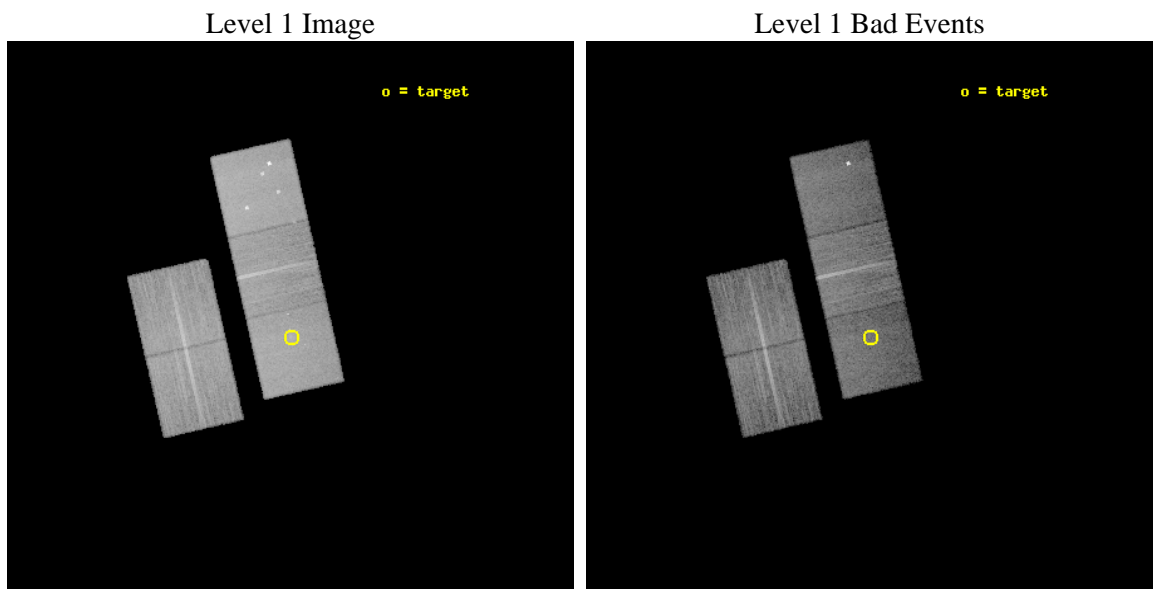
seq_num	800839	Sequence number
obs_id	10484	Observation id
title	Deciphering Cluster Observables: Tracing the Baryons in Clusters of Galaxies	Proposal title
observer	Dr. Amalia Hicks	Principal investigator
object	RCS2347-3535	Source name
dtcycle	0	
cycle	P	events from which exps? Prim/Second/Both
ra_targ	356.955	Observer's specified target RA [deg]
dec_targ	-35.586361	Observer's specified target Dec [deg]
ra_nom	356.95770406065	Nominal RA [deg]
dec_nom	-35.565510133998	Nominal Dec [deg]
roll_nom	77.156153157487	Nominal Roll [deg]
revision	2	Processing version of data
ontime	14033.700107932	Sum of GTIs [s]
livetime	13850.339484562	Livetime [s]
ontime2	14033.700107932	Sum of GTIs [s]
ontime3	14030.559107542	Sum of GTIs [s]
ontime5	14033.700107932	Sum of GTIs [s]
ontime6	14033.700107932	Sum of GTIs [s]
ontime7	14033.700107932	Sum of GTIs [s]
l2events	179254	Number of level 2 events



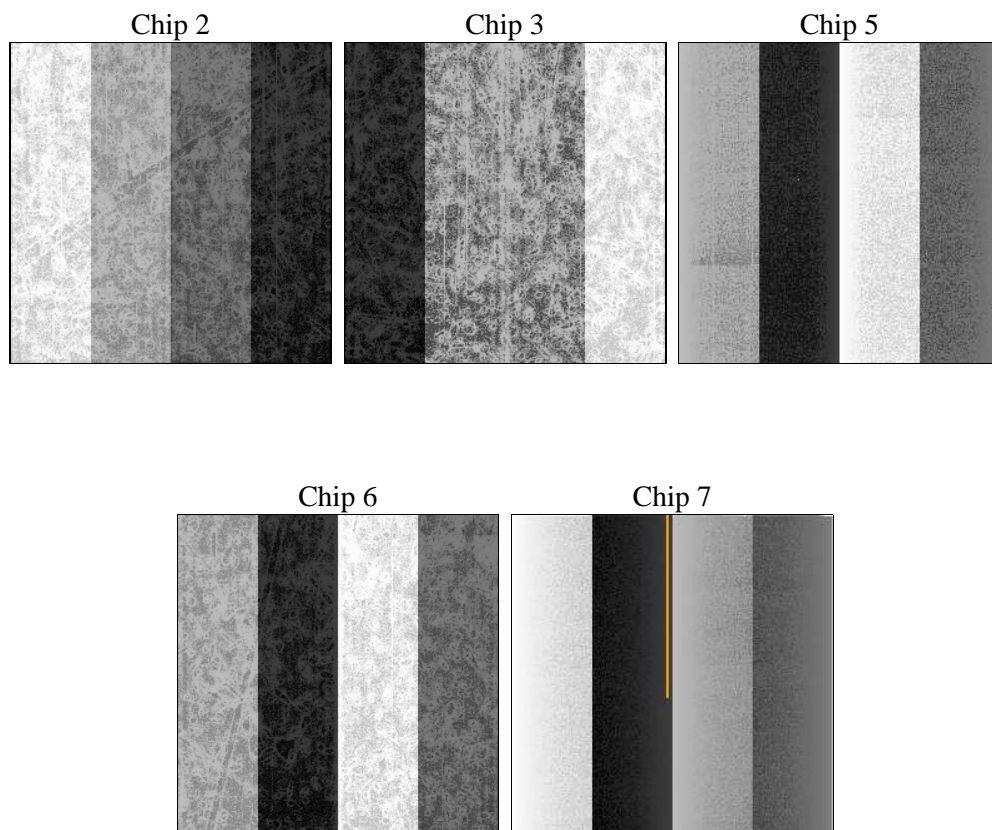
2 OBI

2.1 OBI

2.1.1 Images



2.1.2 Bias



2.1.3 Parameters

obi_num	0	Obi number	sched_exp_time	14000.000000	[s] Scheduled observation exposure time
ascdsver	8.4.5	Processing system revision	ontime	14033.700107932	Sum of GTIs [s]
caldbver	4.4.10	 	ontime2	14033.700107932	Sum of GTIs [s]
date	2012-06-11T13:57:50	Date and time of file creation	ontime3	14030.559107542	Sum of GTIs [s]
revision	2	Processing version of data	ontime5	14033.700107932	Sum of GTIs [s]
			ontime6	14033.700107932	Sum of GTIs [s]
			ontime7	14033.700107932	Sum of GTIs [s]
			l1events	704239	Number of level 1 events

2.1.4 Events

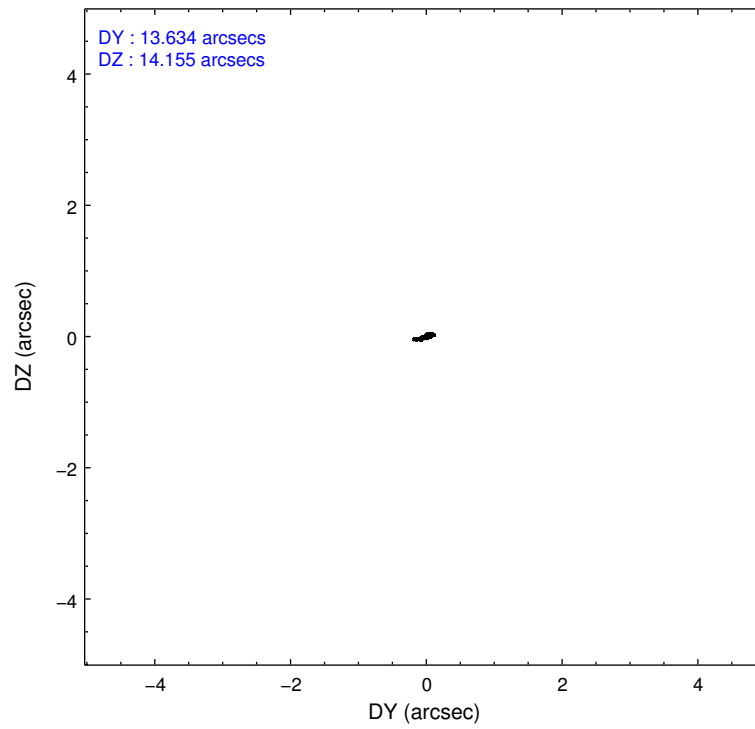
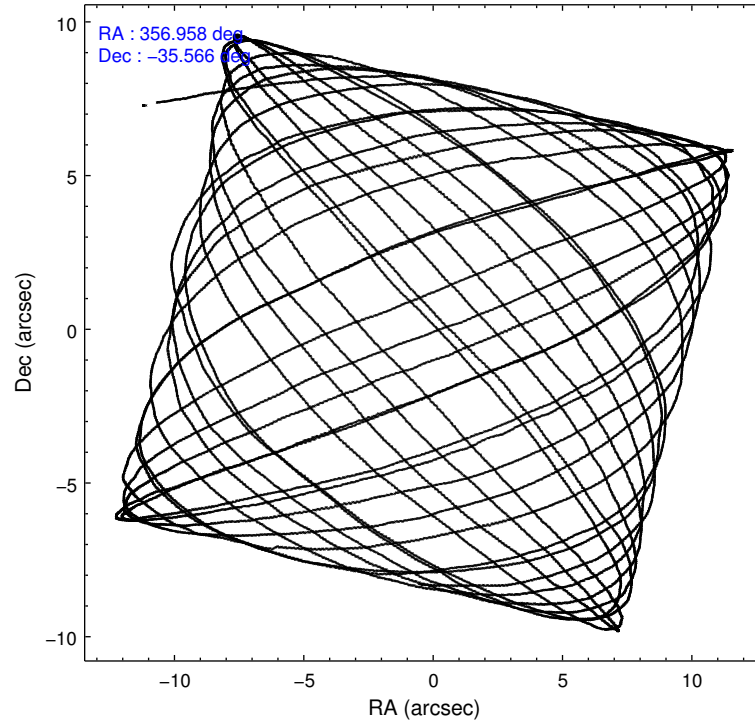
	ccd 2	ccd 3	ccd 5	ccd 6	ccd 7
level 1 events	127134	123143	182721	126514	144727
rejected events	114740	111372	92267	113225	77905
rejected %	90%	90%	50%	89%	53%

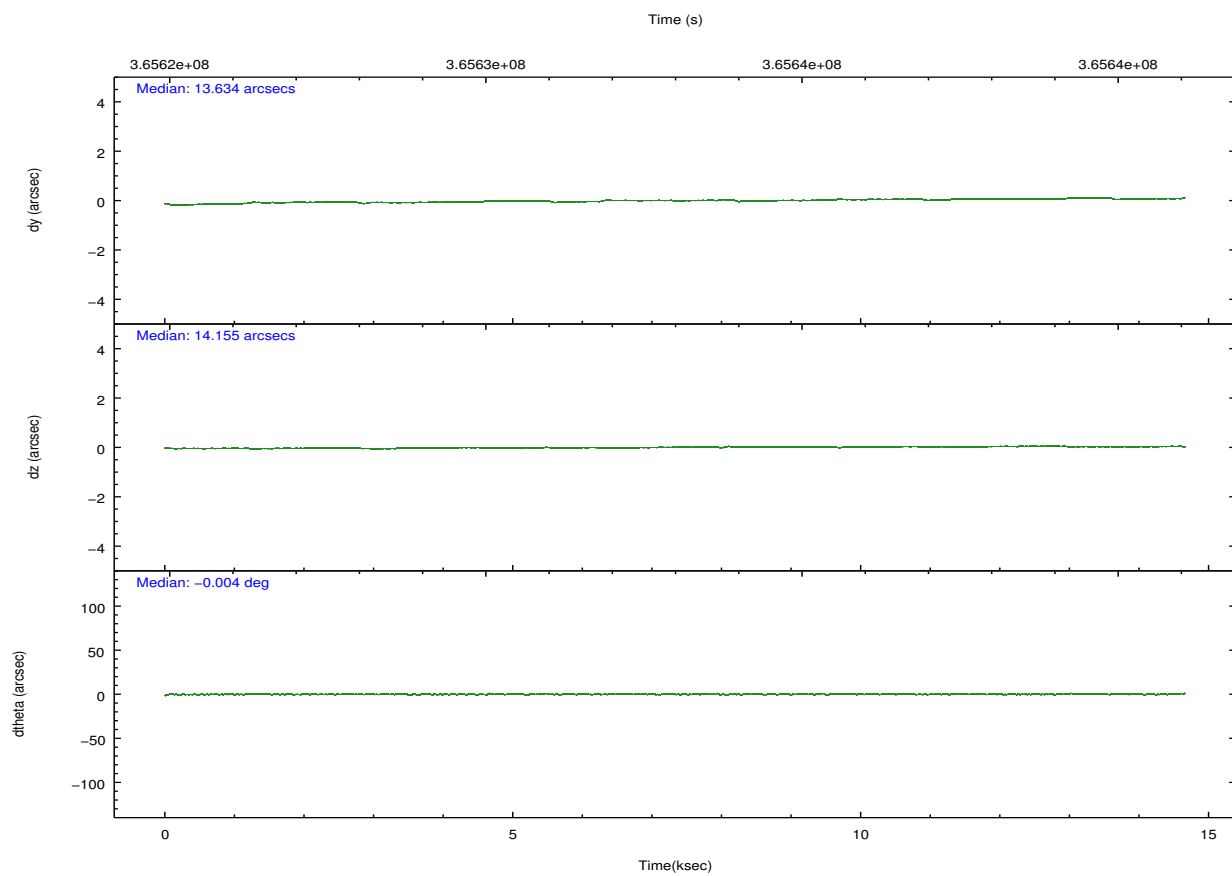
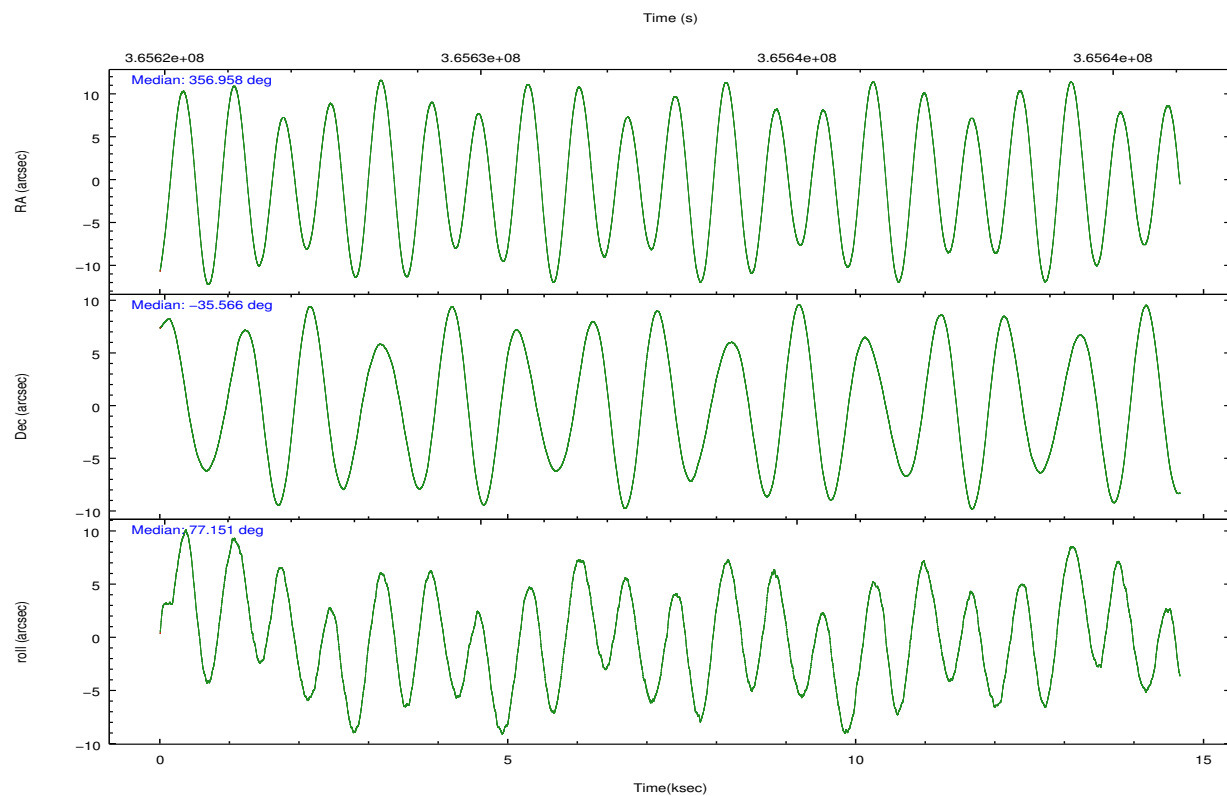
	ccd 2	ccd 3	ccd 5	ccd 6	ccd 7
grade 0 events	4519	4053	10466	4575	6784
	3%	3%	5%	3%	4%
grade 1 events	73	66	300	57	206
	0%	0%	0%	0%	0%
grade 2 events	2974	2614	27240	2952	13571
	2%	2%	14%	2%	9%
grade 3 events	1231	1377	3579	1440	6060
	0%	1%	1%	1%	4%
grade 4 events	1356	1351	3358	1384	5978
	1%	1%	1%	1%	4%
grade 5 events	4196	5166	14060	5080	14543
	3%	4%	7%	4%	10%
grade 6 events	2318	2383	45844	2941	34469
	1%	1%	25%	2%	23%
grade 7 events	110467	106133	77874	108085	63116
	86%	86%	42%	85%	43%

2.2 Compared Parameters

Parameter	Planned	Actual	Parameter	Planned	Actual
Instrument	ACIS	ACIS	Obspar format version number	7	7
Detector	ACIS-23567	ACIS-23567	Obspar file type	PREDICTED	ACTUAL
Grating	NONE	NONE	Obspar update status	NONE	UPDATED
Data mode	VFAINT	VFAINT	CCD I0 on	N	N
Observation mode	POINTING	POINTING	CCD I1 on	N	N
[deg] Pointing RA	356.968036	356.9577040606497	CCD I2 on	O1	Y
[deg] Pointing Dec	-35.591545	-35.56551013399751	CCD I3 on	O2	Y
[deg] Pointing Roll	77.005531	77.15615315748747	CCD S0 on	N	N
[mm] SIM focus pos	-0.684267	-0.6828225247311905	CCD S1 on	O4	Y
[mm] SIM defocus	0	0.001444936568705701	CCD S2 on	O3	Y
[mm] SIM translation stage pos	-190.132523	-190.1425803651734	CCD S3 on	Y	Y
[mm] SIM translation stage offset	0	0.01005778216563158	CCD S4 on	N	N
[s] Observation start time (MET)	365626325.184000	365625163.76688	CCD S5 on	N	N
Observation start date	2009-08-02T18:50:59	2009-08-02T18:32:43	Number of optional ACIS chips dropped	0	0
[s] Observation end time (MET)	365640325.184000	365641488.43019	On-chip summing requested	N	N
Observation end date	2009-08-02T22:44:19	2009-08-02T23:04:48	Subarray requested	NONE	NONE
Read mode	TIMED	TIMED	Alternating exposures requested	N	N
			[s] Primary exposure time	0.000000	3.1

2.3 Aspect



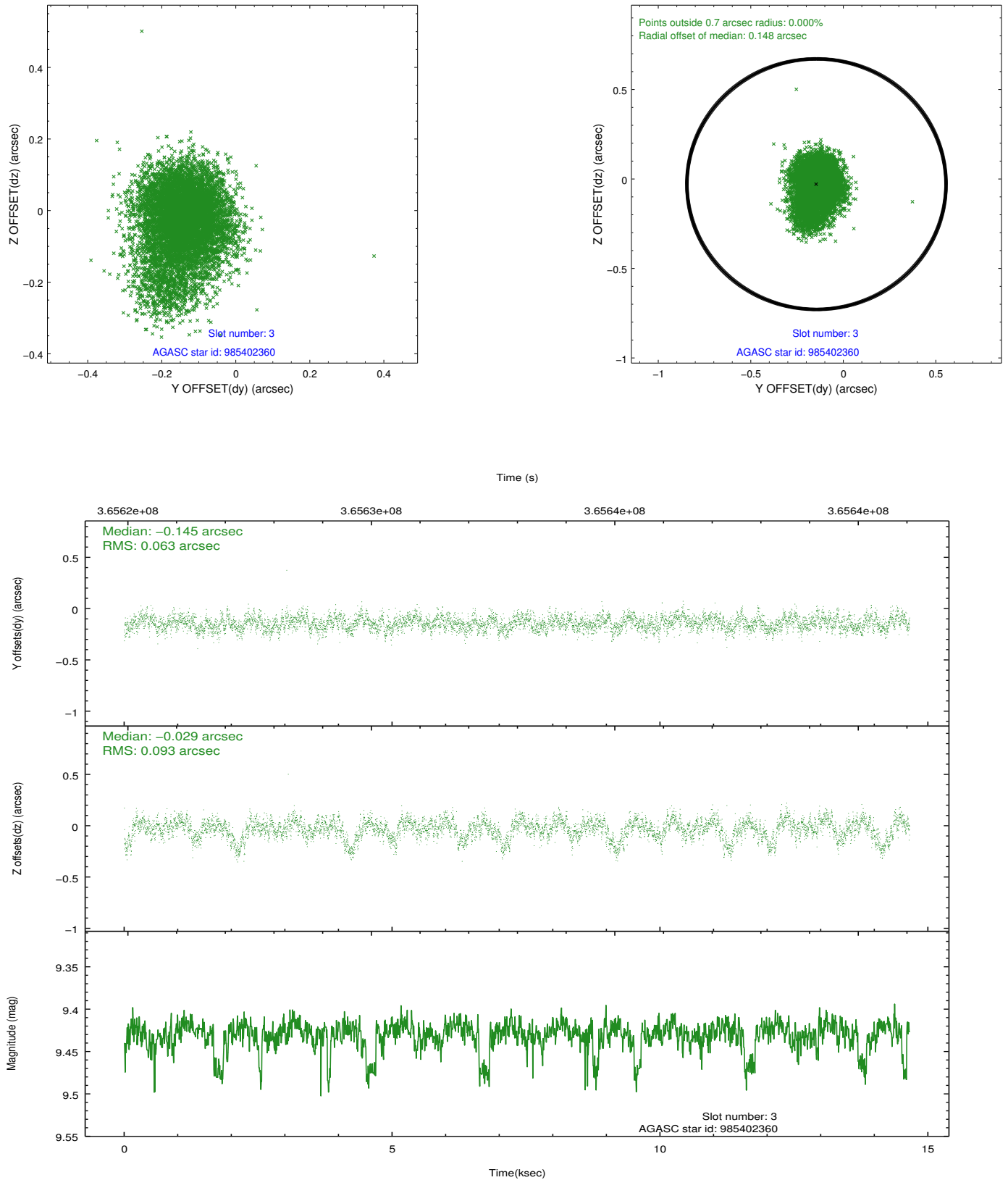


Slot Statistics

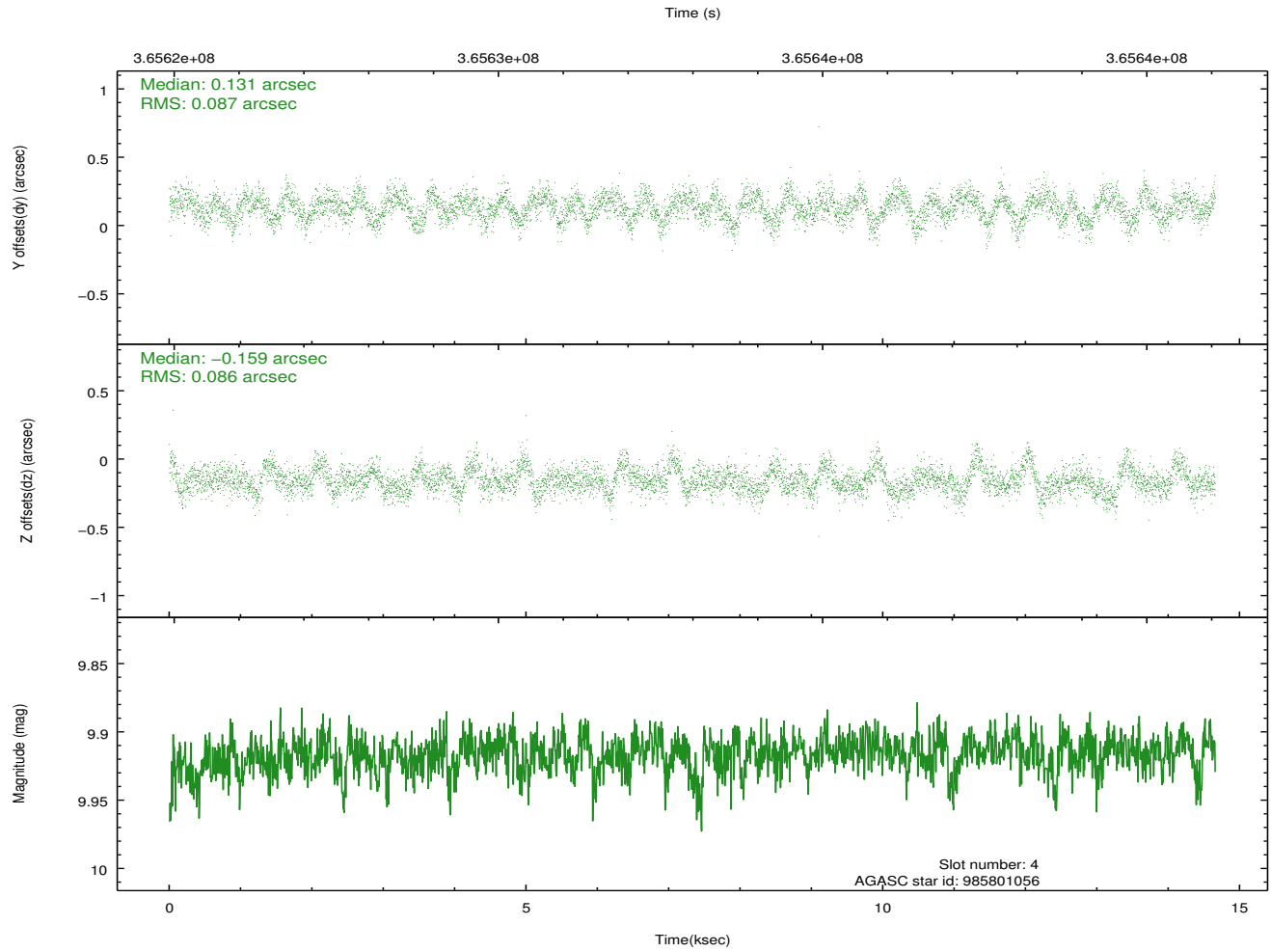
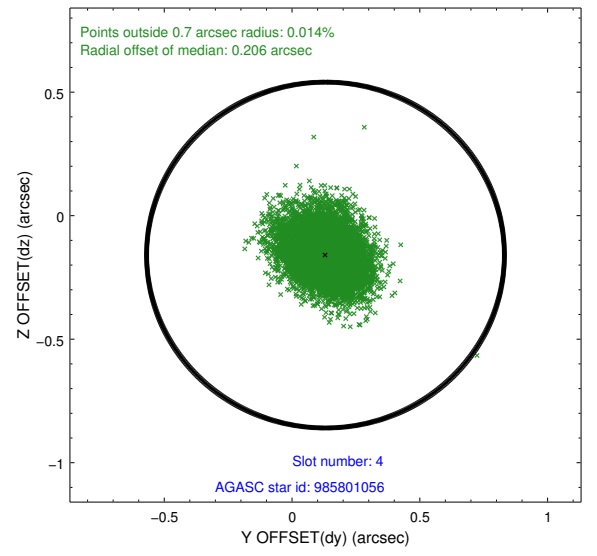
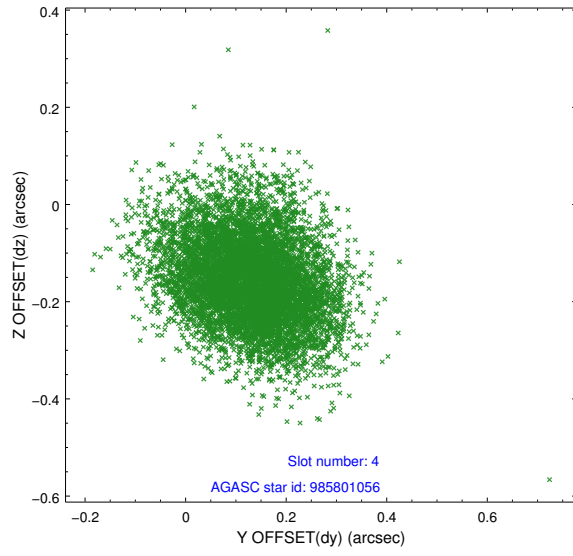
slot	status	id	mag	n_pts	med_dy	med_dz	dr1	dr2	ra	dec	mean_y	mean_z
0	FID	ACIS-S-2	6.93	3575	-0.042	-0.035	0.007	0.011	0.000000	0.000000	-766.58	-1735.50
1	FID	ACIS-S-4	7.02	3575	0.168	0.030	0.006	0.012	0.000000	0.000000	2146.75	172.74
2	FID	ACIS-S-5	7.05	3575	-0.157	0.014	0.006	0.010	0.000000	0.000000	-1819.15	166.73
3	GUIDE	985402360	9.43	7147	-0.145	-0.029	0.116	0.205	356.358785	-34.981205	1731.25	2243.84
4	GUIDE	985801056	9.92	7139	0.131	-0.159	0.130	0.213	356.354770	-35.991569	-1810.10	1415.84
5	GUIDE	985801720	9.58	7140	-0.014	0.028	0.148	0.226	356.673603	-35.875493	-1190.49	606.60
6	GUIDE	985926936	8.15	7146	-0.079	0.063	0.078	0.123	357.590053	-35.976132	-947.28	-2078.00
7	GUIDE	985929256	9.44	7144	0.101	0.120	0.106	0.178	357.190226	-36.228102	-2088.68	-1144.44

2.4 Star Slots

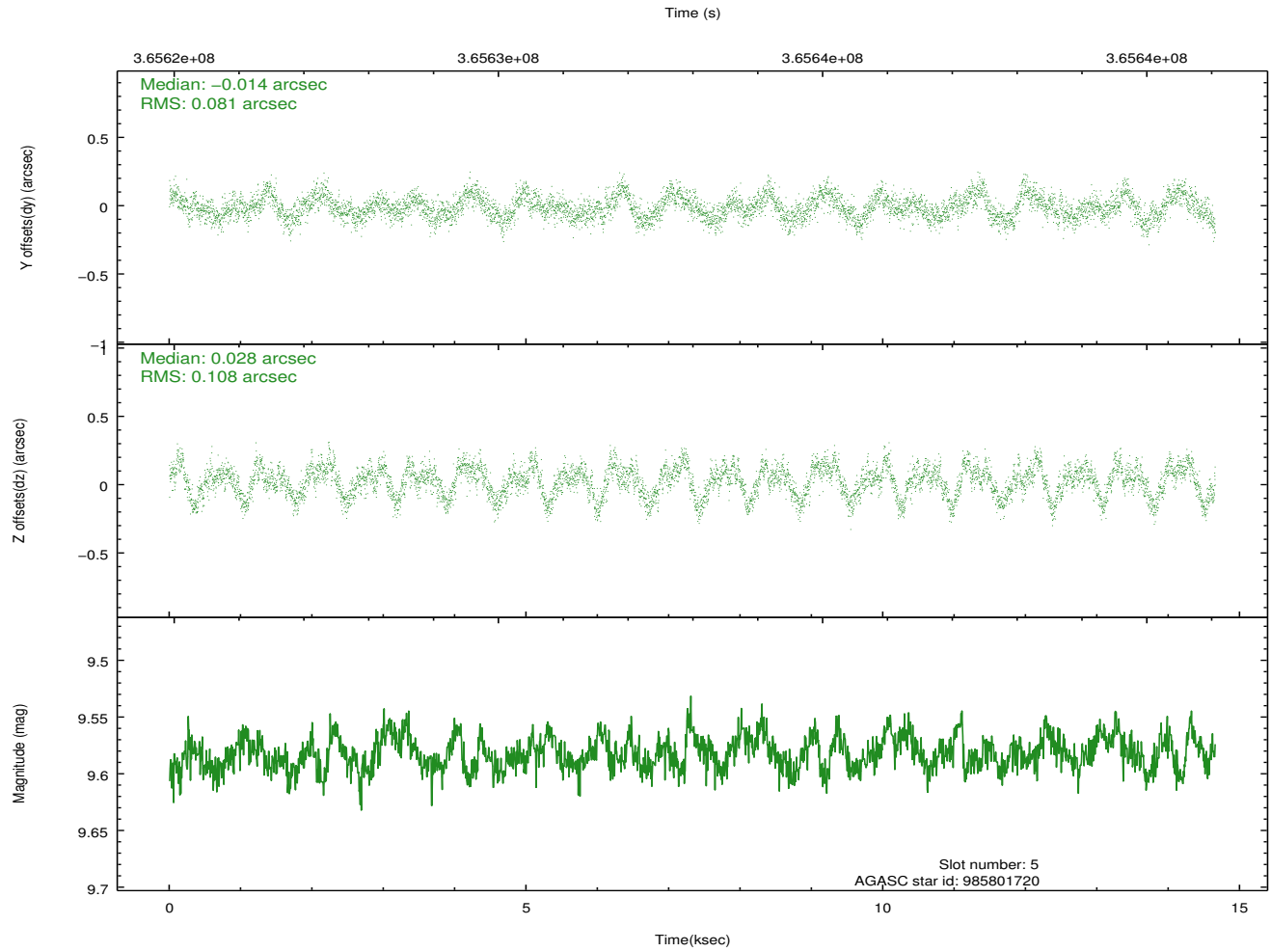
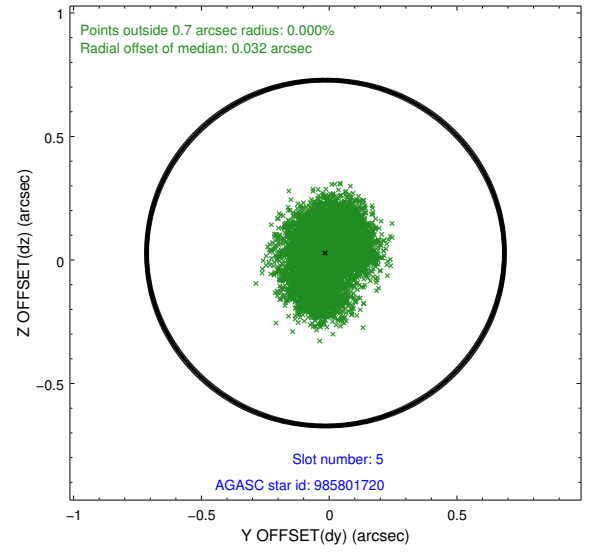
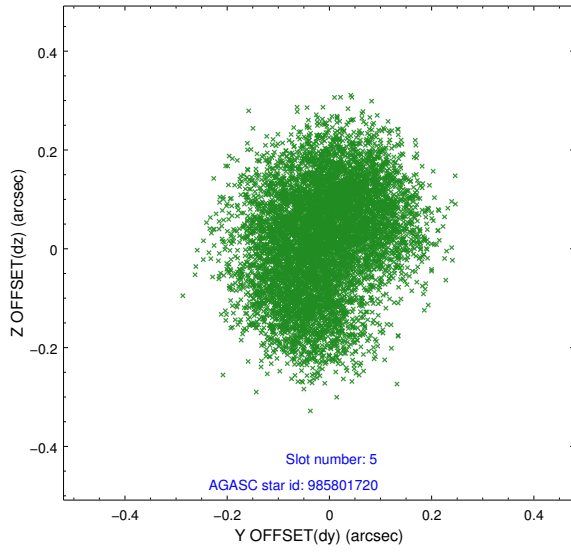
2.4.1 Slot 3



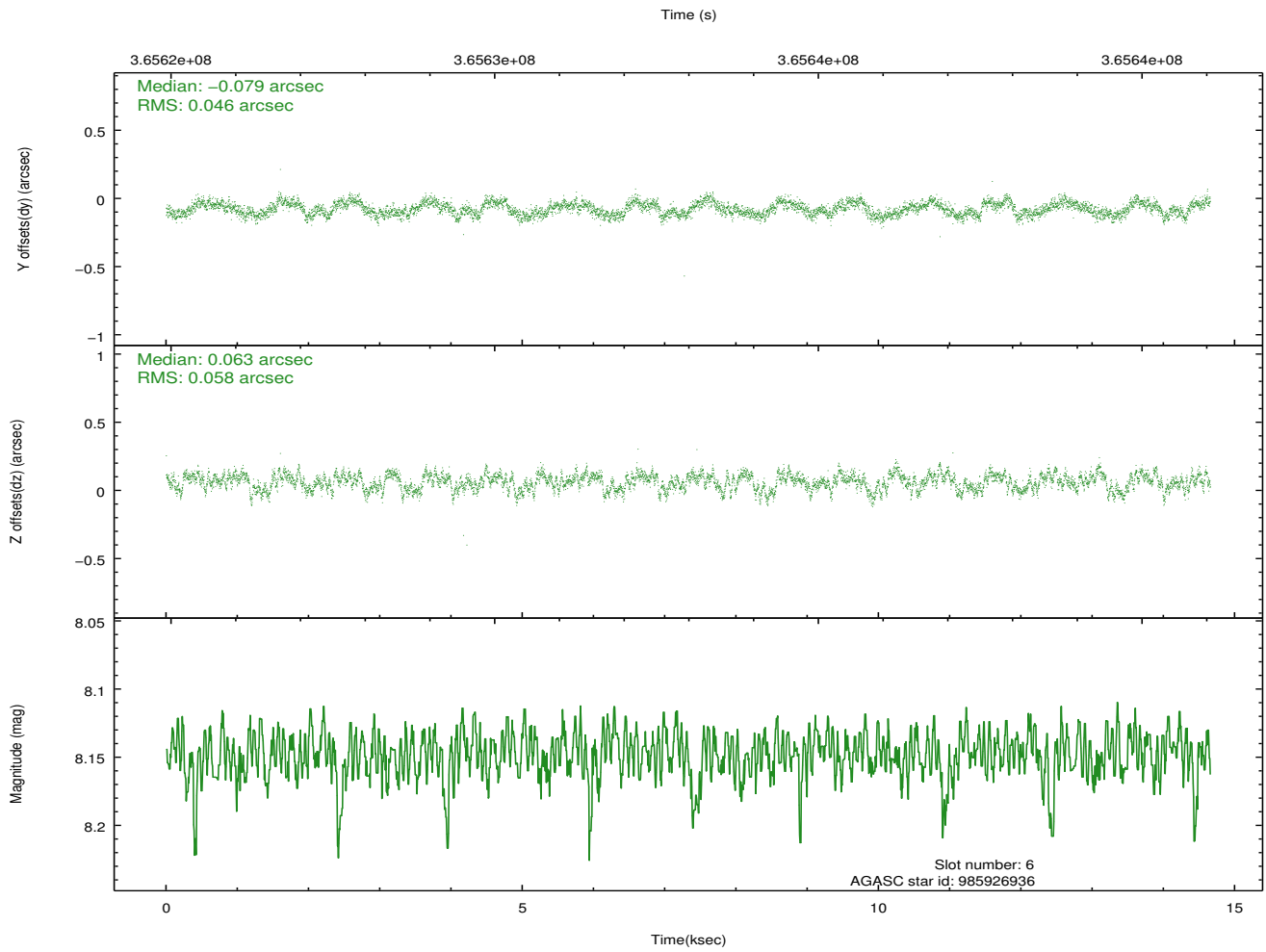
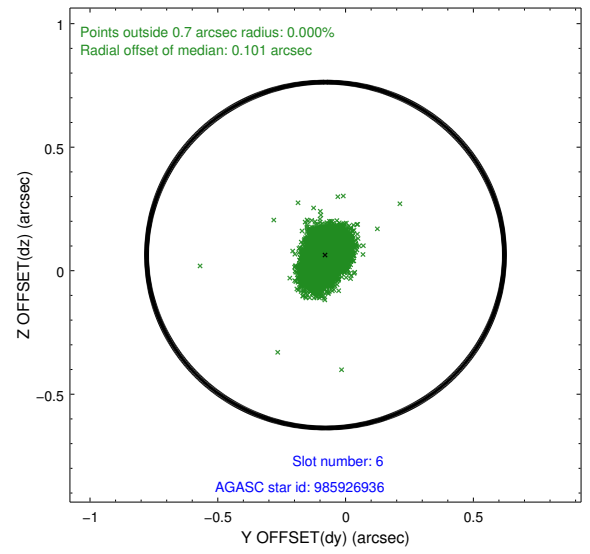
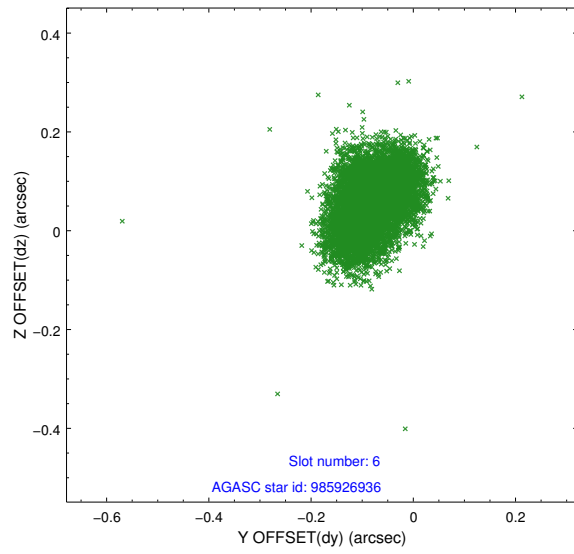
2.4.2 Slot 4



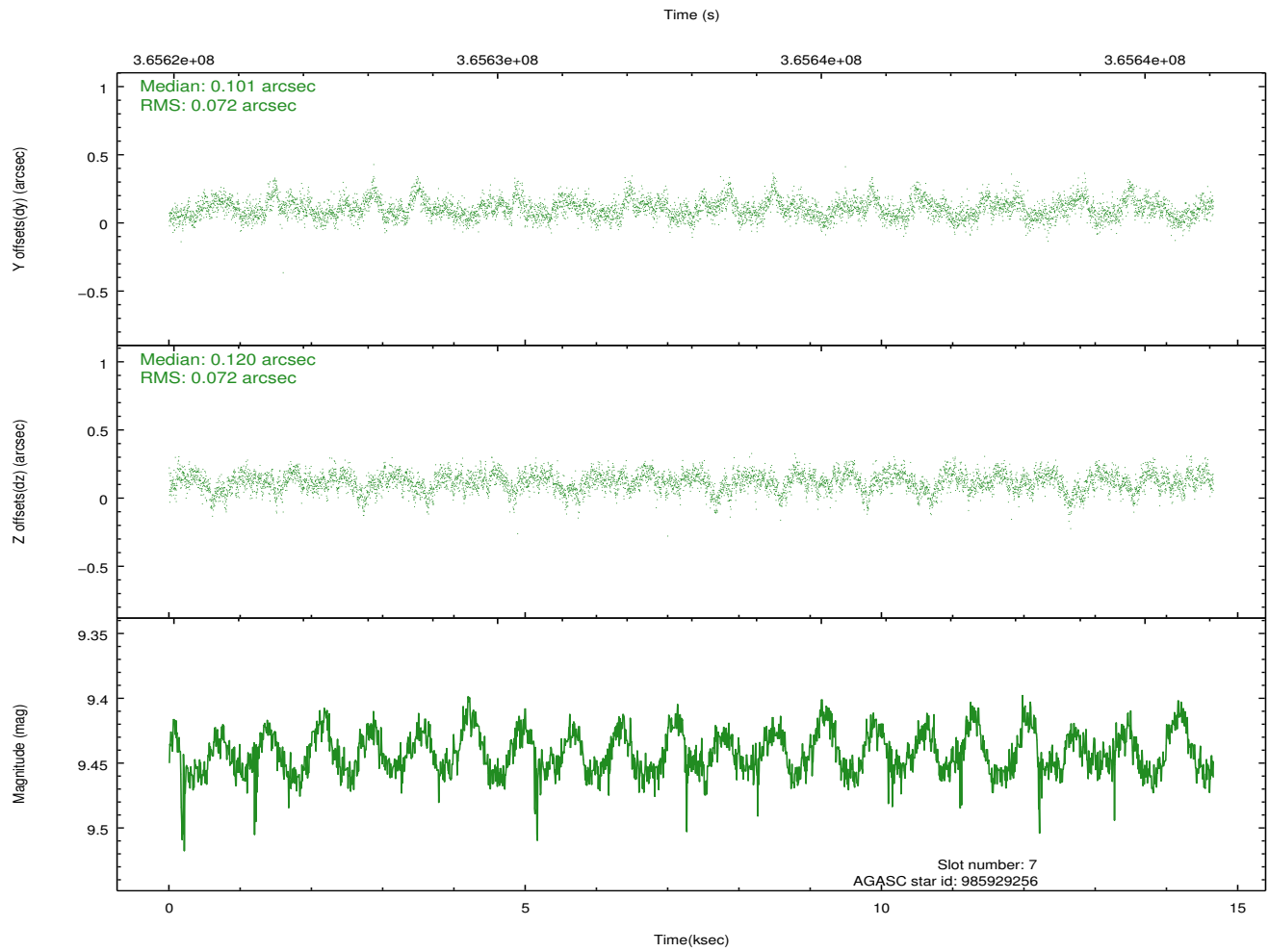
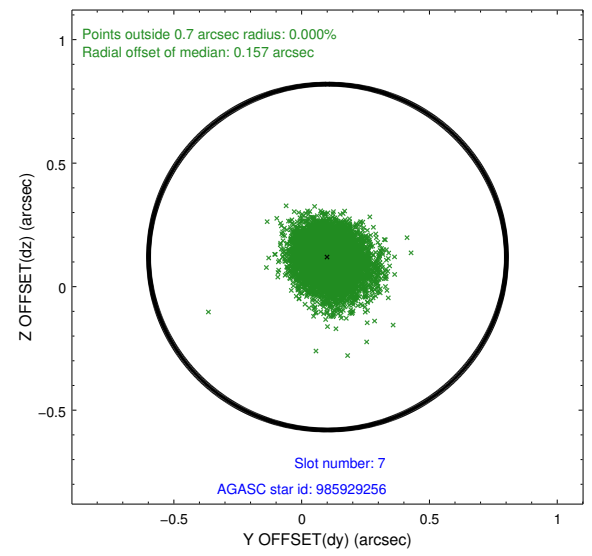
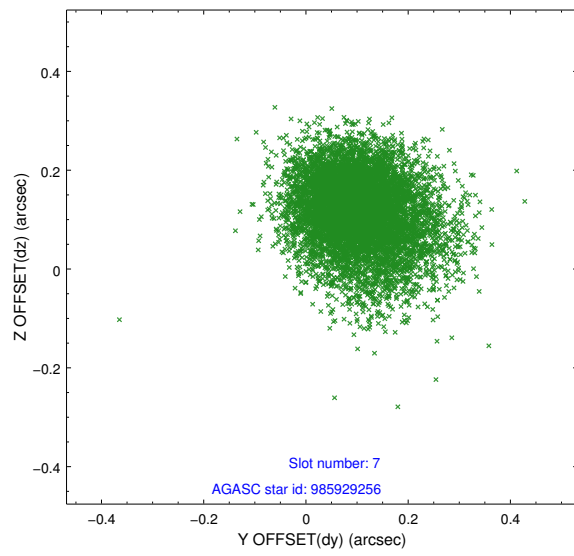
2.4.3 Slot 5



2.4.4 Slot 6

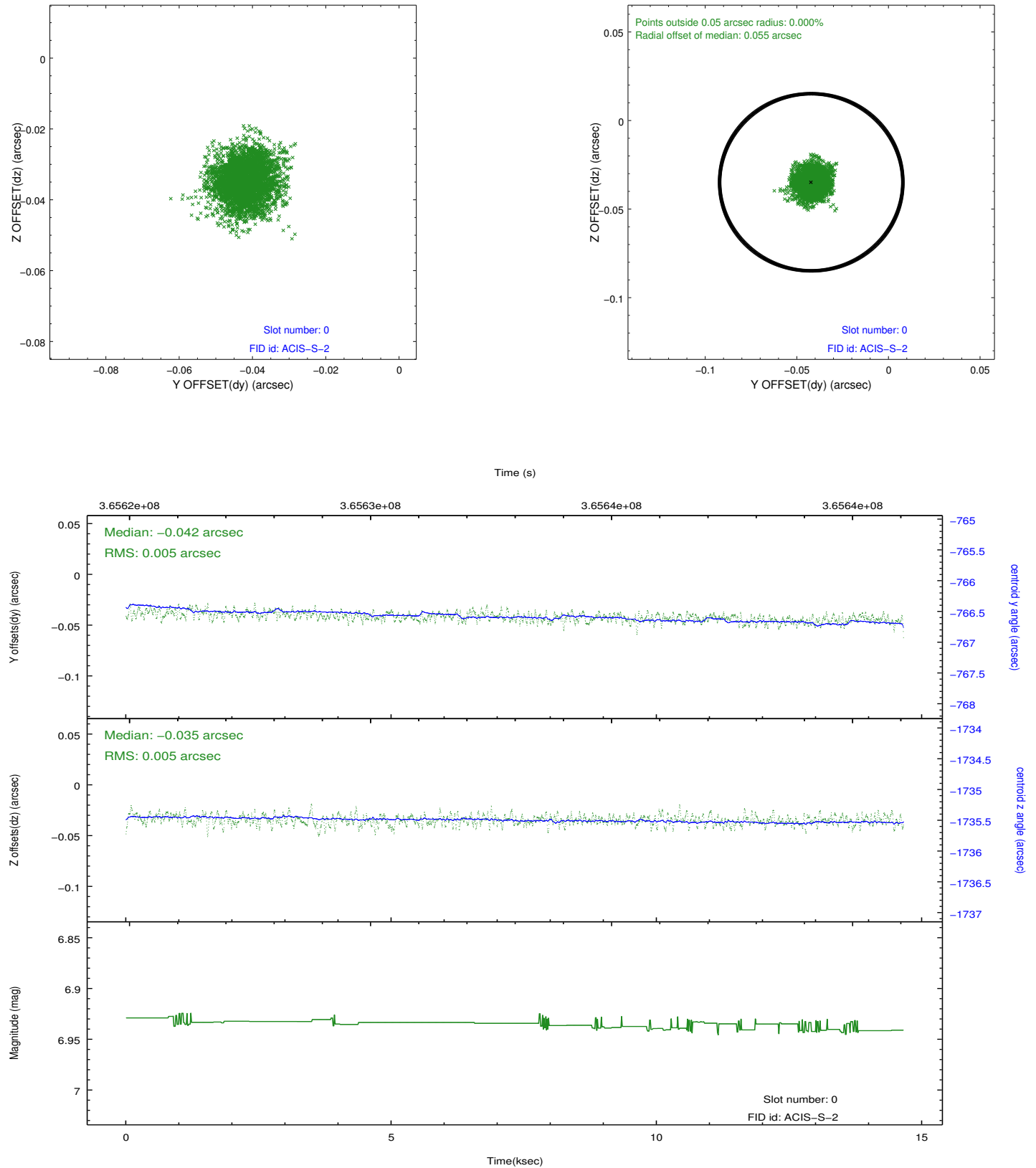


2.4.5 Slot 7

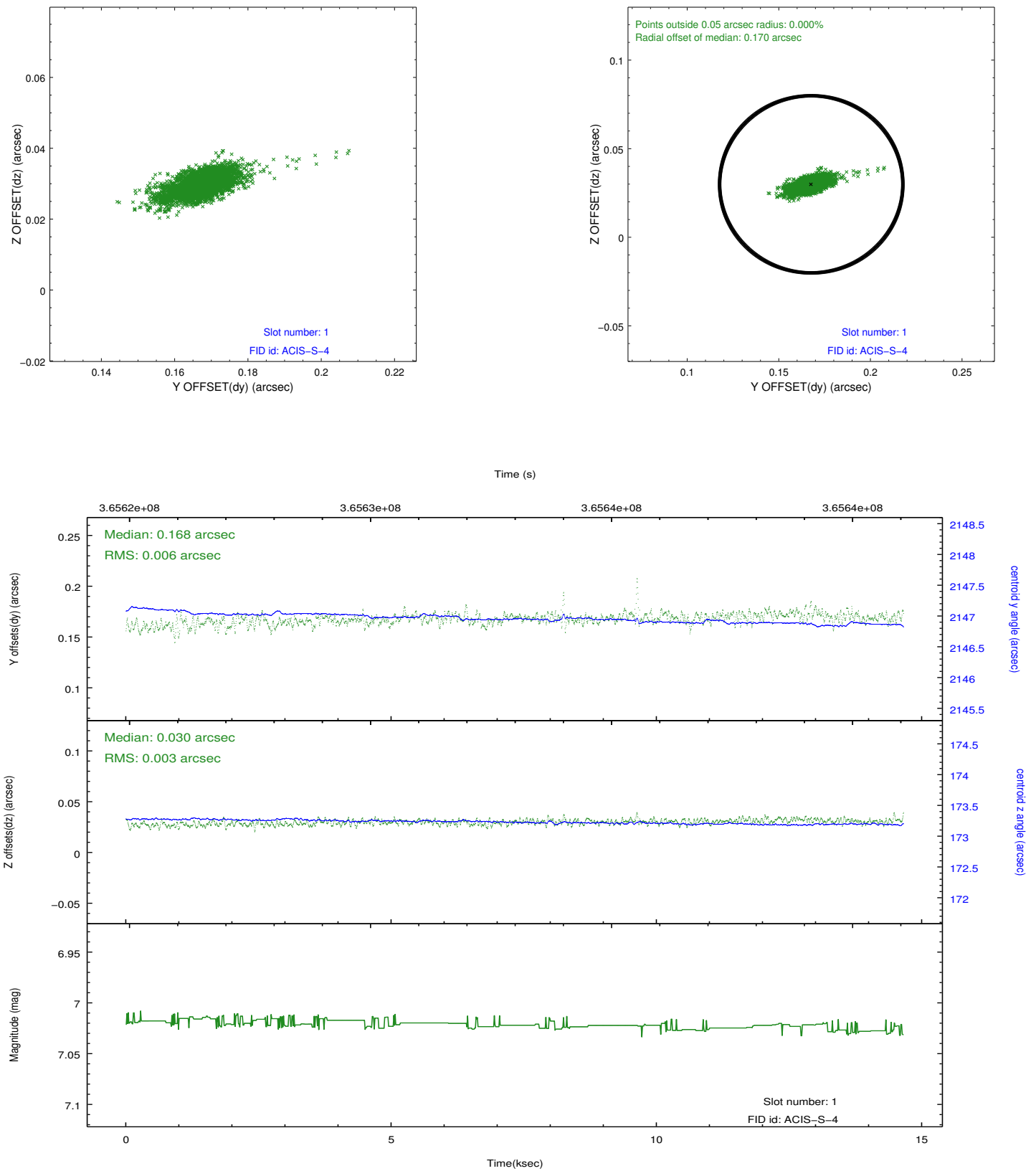


2.5 FID Slots

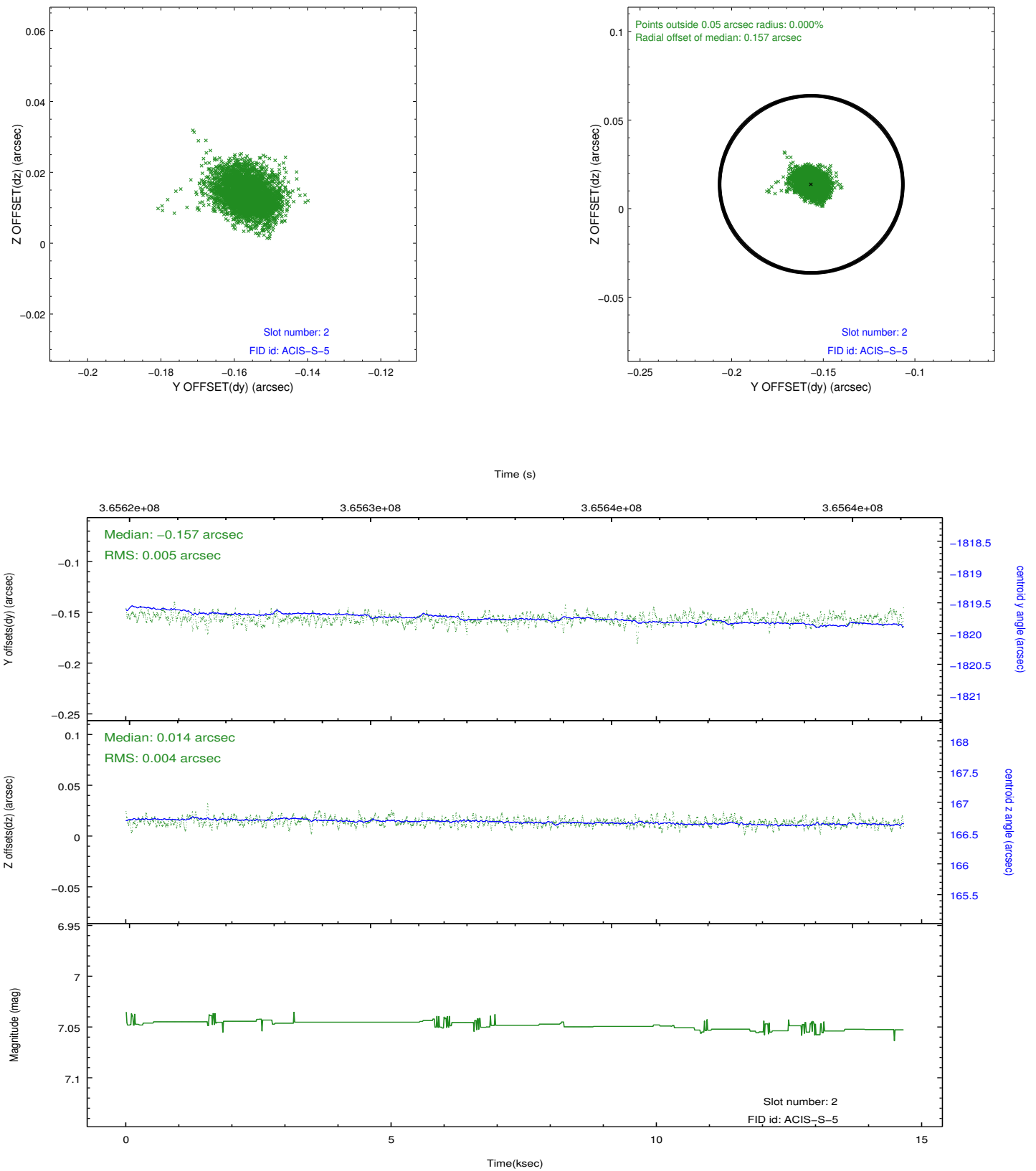
2.5.1 Slot 0



2.5.2 Slot 1



2.5.3 Slot 2



A Summary

A.1 Status

V&V Scientist	Beth Sundheim
V&V Date (YYYY-MM-DD)	2012.06.14
V&V Edition	1
V&V Disposition and Status	OK
V&V Charge Time	14.033700107932

A.2 Comments