

V&V Reference Report

L2 ASCDS Version : 7.6.9

Observation 1044 - L2 Version 001
Chandra X-Ray Center

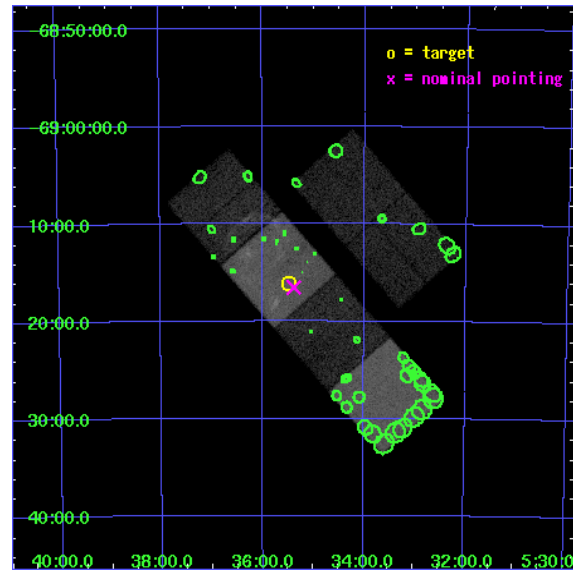
L2 Processing Date : Nov 29 2006

Contents

1	Front	2
2	OBI	3
2.1	OBI	3
2.1.1	Images	3
2.1.2	Bias	3
2.1.3	Parameters	4
2.1.4	Events	4
2.2	Compared Parameters	5
2.3	Aspect	6
2.4	Star Slots	9
2.4.1	Slot 3	9
2.4.2	Slot 4	10
2.4.3	Slot 5	11
2.4.4	Slot 6	12
2.4.5	Slot 7	13
2.5	FID Slots	14
2.5.1	Slot 0	14
2.5.2	Slot 1	15
2.5.3	Slot 2	16
3	Point Sources	17
A	Summary	18
A.1	Status	18
A.2	Comments	18

1 Front

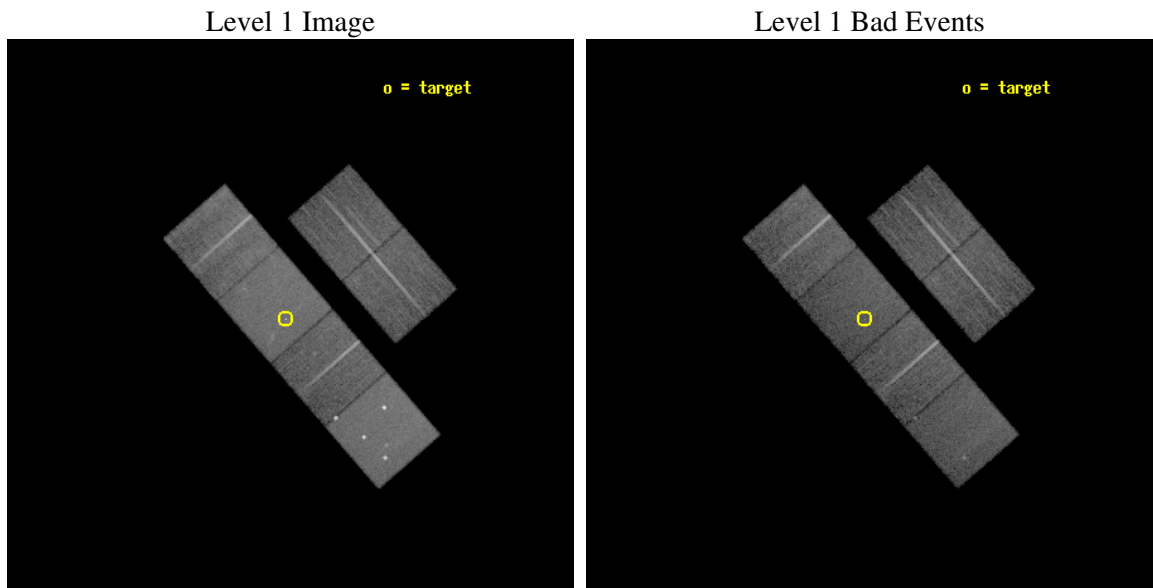
seq_num	500110
obs_id	1044
title	SN1987A MONITORING
observer	Professor Gordon Garmire
object	SN1987A
dtcycle	0
cycle	P
ra_targ	83.867083
dec_targ	-69.269667
ra_nom	83.845496814548
dec_nom	-69.275762700381
roll_nom	228.89030026293
revision	2
ontime	18006.40001677
livetime	17778.392137605
ontime2	18006.40001677
ontime3	18006.40001677
ontime5	18006.40001677
ontime6	18006.40001677
ontime7	18006.40001677
ontime8	18006.40001677
l2events	211360



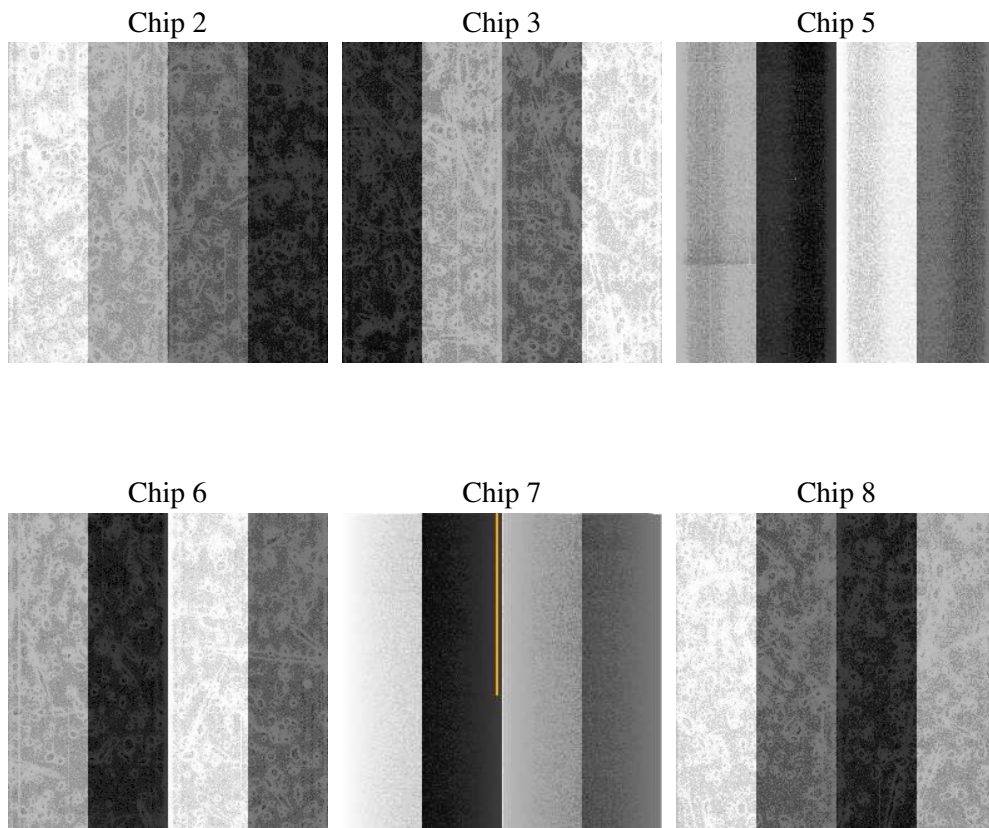
2 OBI

2.1 OBI

2.1.1 Images



2.1.2 Bias



2.1.3 Parameters

obi_num	1
ascdsver	7.6.9
caldsver	3.2.4
date	2006-11-29T12:11:38
revision	2

sched_exp_time	18097.236000
ontime	18013.464049339
ontime2	18013.464049339
ontime3	18013.464049339
ontime5	18013.464049339
ontime6	18013.464049339
ontime7	18013.464049339
ontime8	18013.464049339
l1events	858011

2.1.4 Events

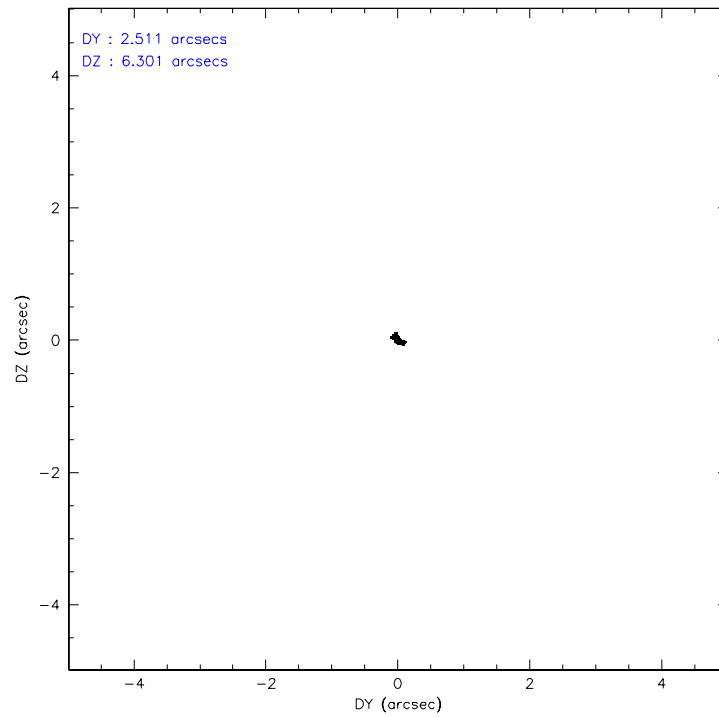
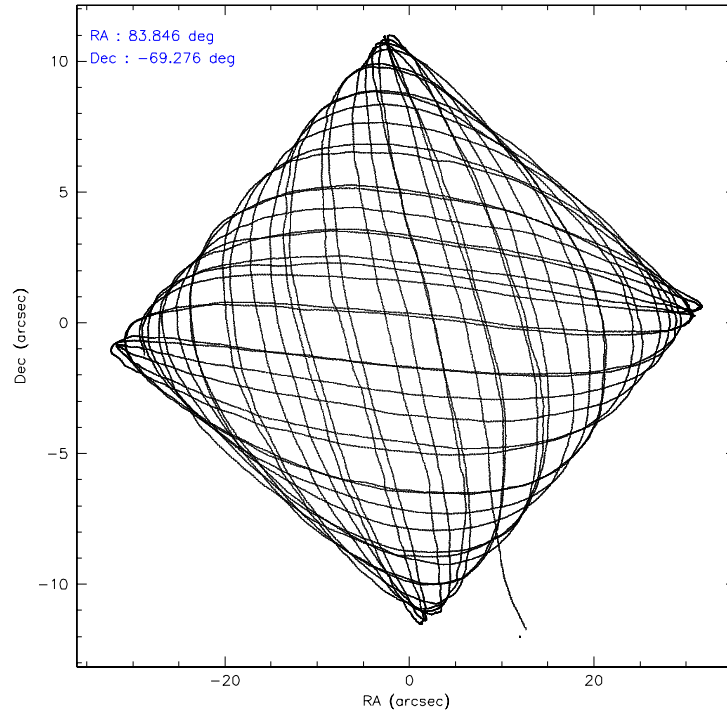
	ccd 2	ccd 3	ccd 5	ccd 6	ccd 7	ccd 8
level 1 events	120629	116242	181209	121600	167222	151109
rejected events	105421	102019	90774	103552	90441	116841
rejected %	87%	87%	50%	85%	54%	77%

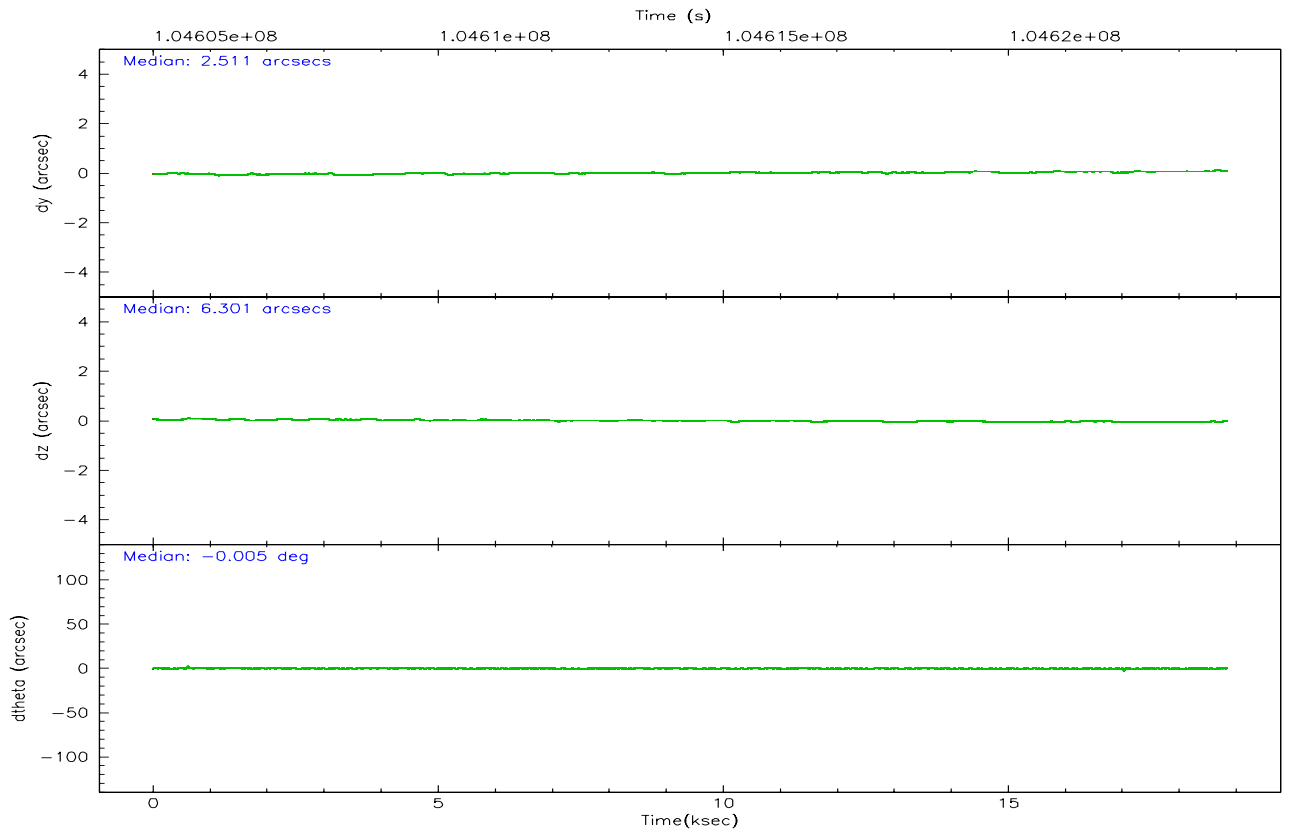
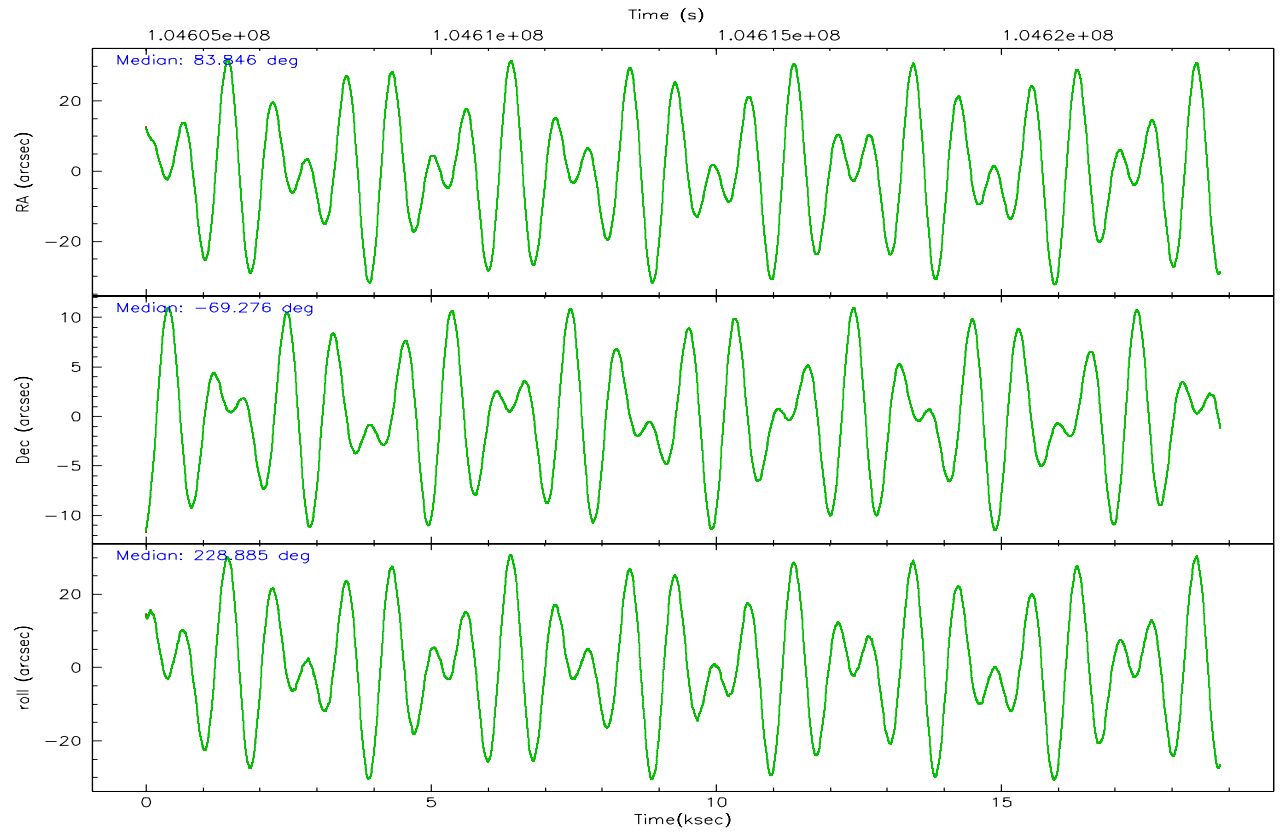
	ccd 2	ccd 3	ccd 5	ccd 6	ccd 7	ccd 8
grade 0 events	7389	6779	17528	9782	8857	14124
	6%	5%	9%	8%	5%	9%
grade 1 events	57	55	535	62	115	117
	0%	0%	0%	0%	0%	0%
grade 2 events	3001	2654	25523	2921	19355	6562
	2%	2%	14%	2%	11%	4%
grade 3 events	1322	1311	2454	1450	5085	3259
	1%	1%	1%	1%	3%	2%
grade 4 events	1260	1217	2541	1295	5055	3103
	1%	1%	1%	1%	3%	2%
grade 5 events	4036	4371	7955	4817	10025	6120
	3%	3%	4%	3%	5%	4%
grade 6 events	2240	2270	42418	2608	38455	7229
	1%	1%	23%	2%	22%	4%
grade 7 events	101324	97585	82255	98665	80275	110595
	83%	83%	45%	81%	48%	73%

2.2 Compared Parameters

Parameter	Planned	Actual	Parameter	Planned	Actual
Instrument	ACIS	ACIS	Obspar format version number	6	6
Detector	ACIS-235678	ACIS-235678	Obspar file type	PREDICTED	ACTUAL
Grating	NONE	NONE	Obspar update status	NONE	UPDATED
Data mode	FAINT	FAINT	Number of optional ACIS chips dropped	0	0
Observation mode	POINTING	POINTING	On-chip summing requested	N	N
Pointing RA	83.859589	83.8454968145484	Subarray requested	NONE	NONE
Pointing Dec	-69.248936	-69.27576270038057	Alternating exposures requested	N	N
Pointing Roll	228.746857	228.8903002629276	Primary exposure time	0.000000	3.2
Window start time	103852864.184000	103852864.184000			
Window stop time	109123264.184000	109123264.184000			
SIM focus pos (mm)	-0.684267	-0.6828225247311905			
SIM defocus (mm)	0	0.001444936568705701			
SIM translation stage pos (mm)	-190.132523	-190.1425803651734			
SIM translation stage offset (mm)	0	0.01005778216563158			
Observation start time	104605744.184000	104604508.54621			
Observation start date	2001-04-25T17:08:00	2001-04-25T16:48:28			
Observation end time	104623841.184000	104624155.23448			
Observation end date	2001-04-25T22:09:37	2001-04-25T22:15:55			
Read mode	TIMED	TIMED			

2.3 Aspect



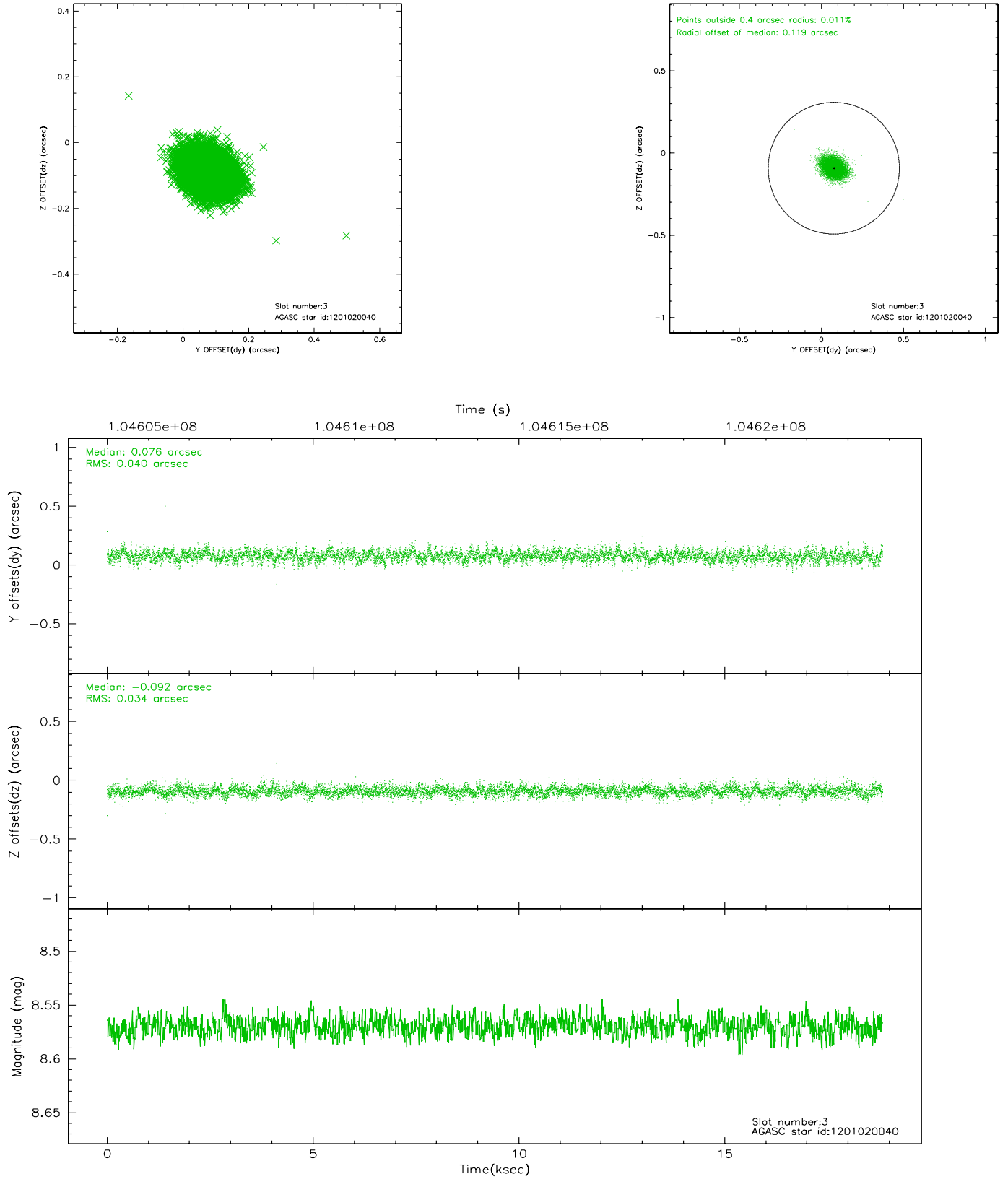


Slot Statistics

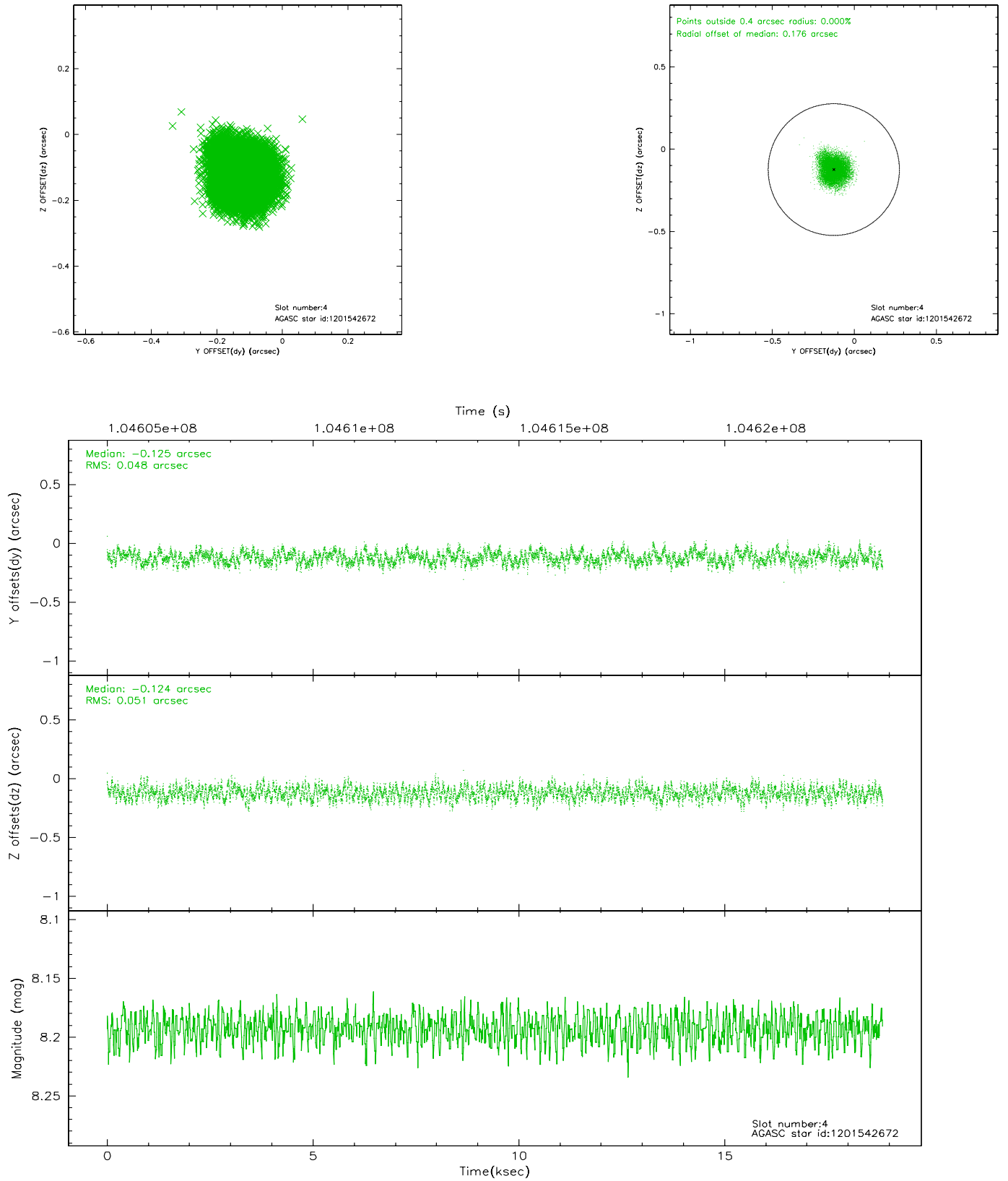
slot	status	id	mag	n_pts	med_dy	med_dz	dr1	dr2	ra	dec	mean_y	mean_z
0	FID	ACIS-S-2	7.11	4596	-0.019	0.023	0.007	0.010	0.000000	0.000000	-755.13	-1727.39
1	FID	ACIS-S-4	7.20	4596	-0.072	0.003	0.005	0.009	0.000000	0.000000	2157.96	180.91
2	FID	ACIS-S-5	7.24	4595	0.060	-0.017	0.006	0.010	0.000000	0.000000	-1807.66	174.72
3	GUIDE	1201020040	8.57	9192	0.076	-0.092	0.055	0.091	85.379163	-68.879396	-2281.67	620.00
4	GUIDE	1201542672	8.19	9192	-0.125	-0.124	0.075	0.117	84.492488	-69.957531	1404.97	2271.40
5	GUIDE	1201017288	9.73	9190	0.121	0.092	0.105	0.171	84.358094	-68.728983	-1834.45	-743.30
6	GUIDE	1200883536	9.87	9185	0.031	0.016	0.093	0.154	83.119228	-69.218429	544.97	-779.96
7	GUIDE	1200887248	9.66	9186	-0.108	0.113	0.114	0.185	82.362845	-68.868028	267.60	-2349.23

2.4 Star Slots

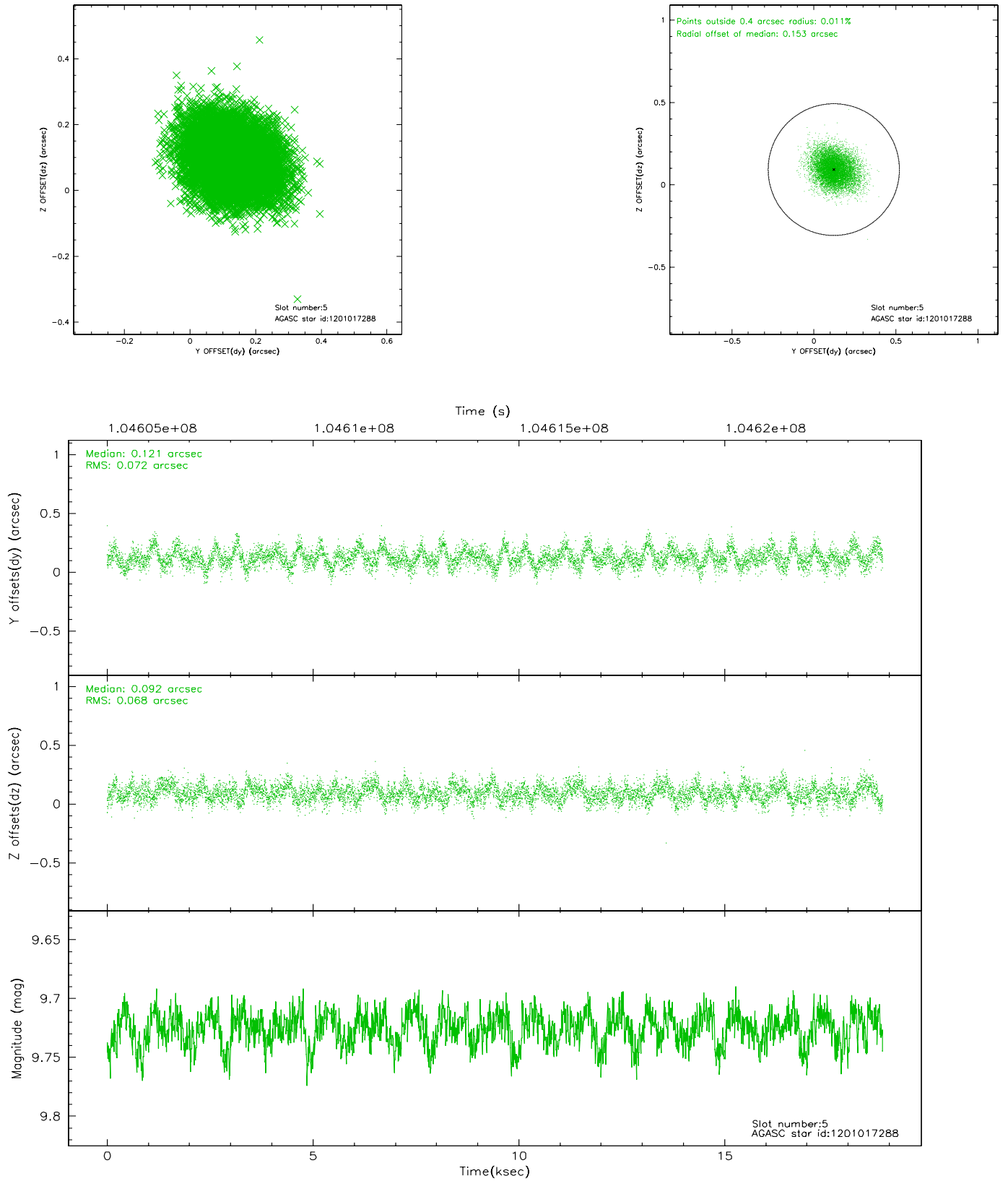
2.4.1 Slot 3



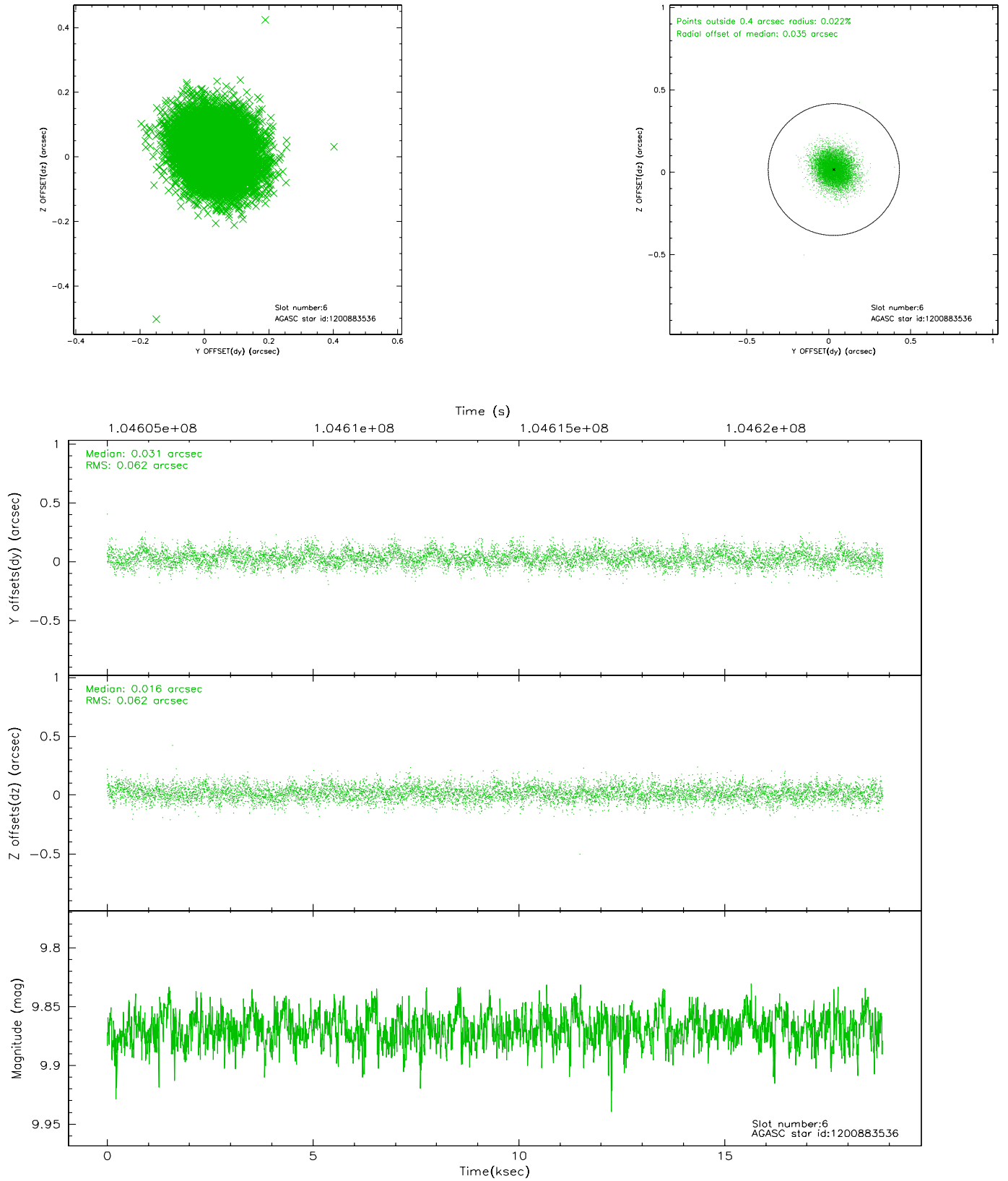
2.4.2 Slot 4



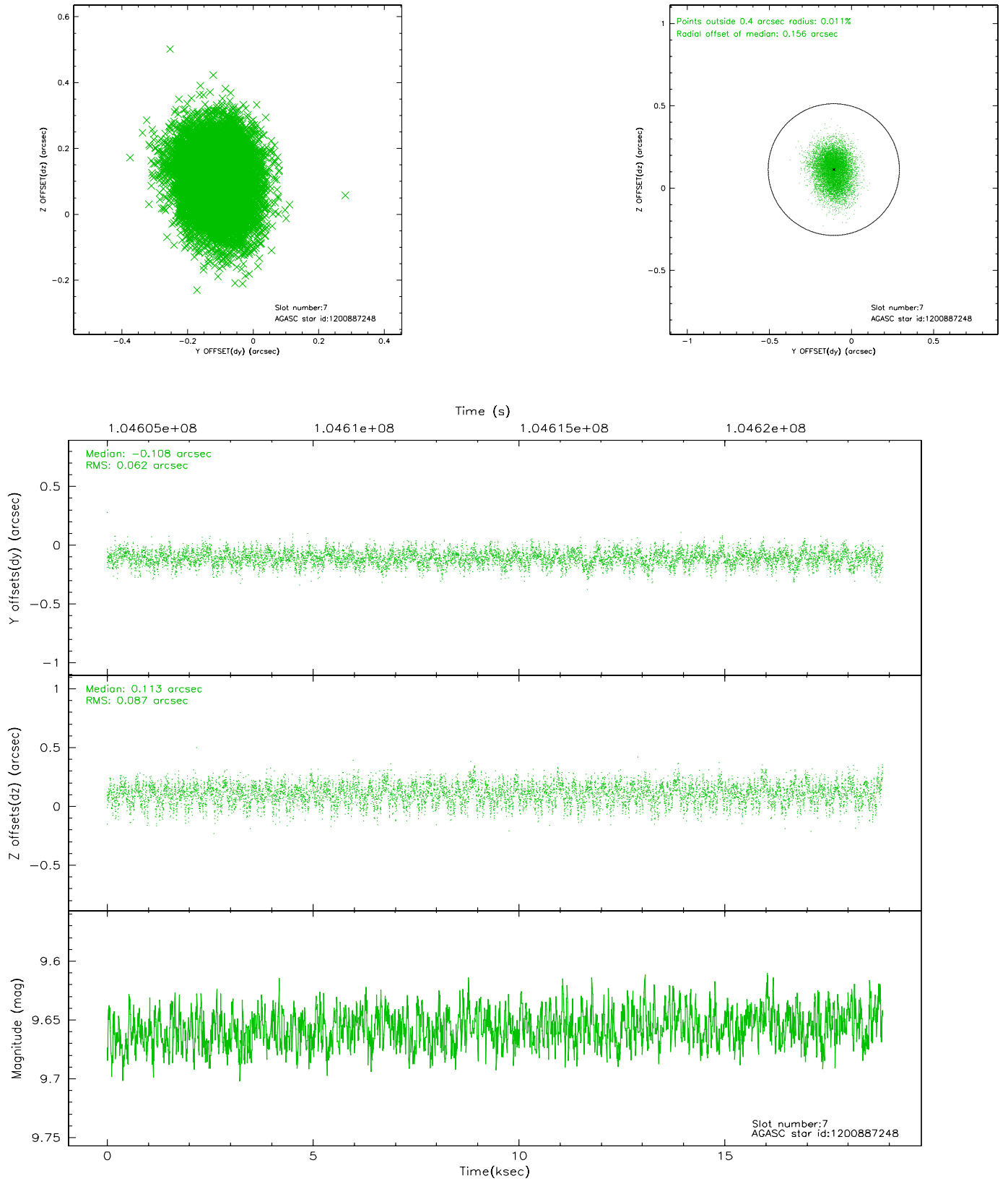
2.4.3 Slot 5



2.4.4 Slot 6

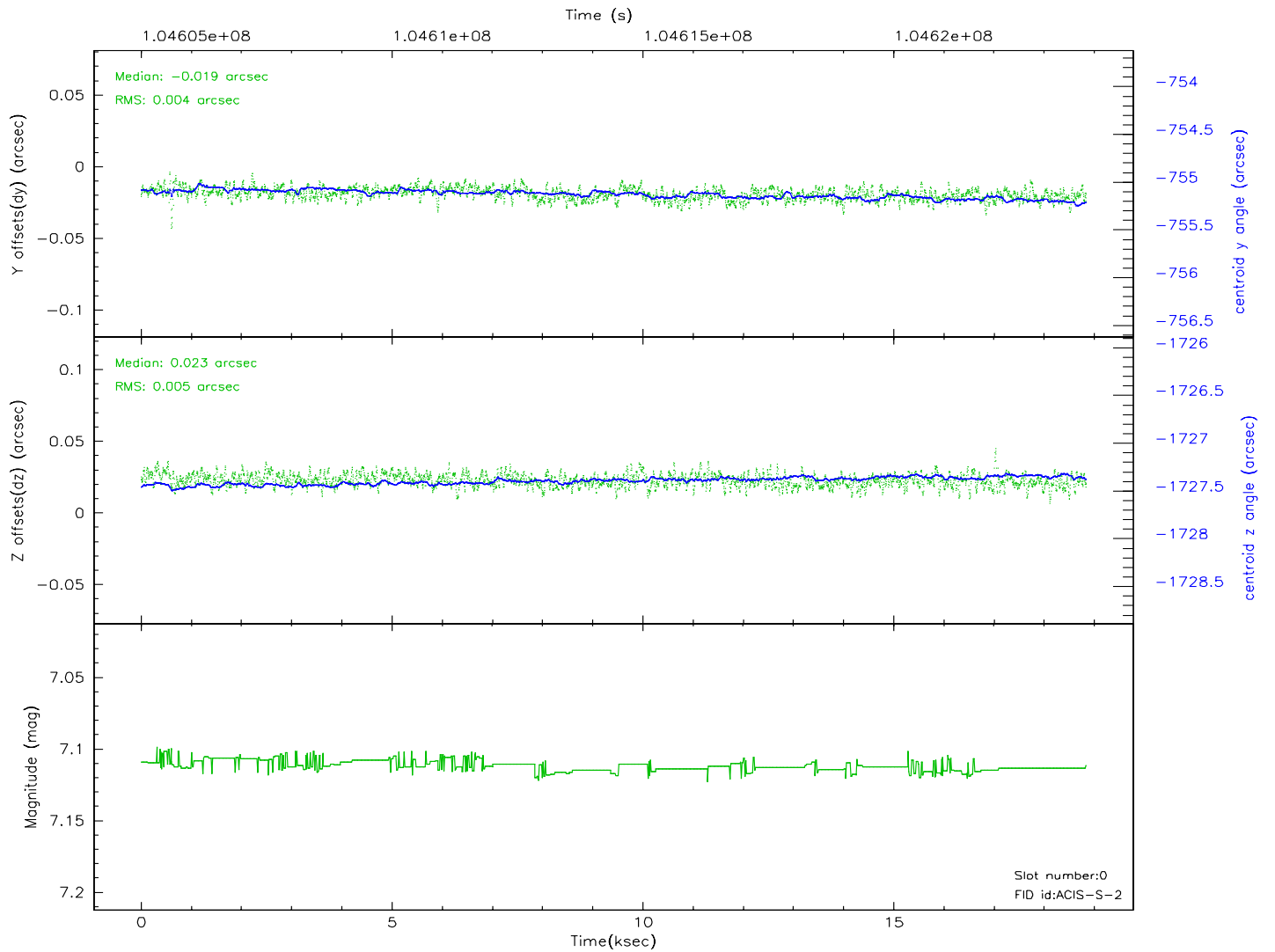
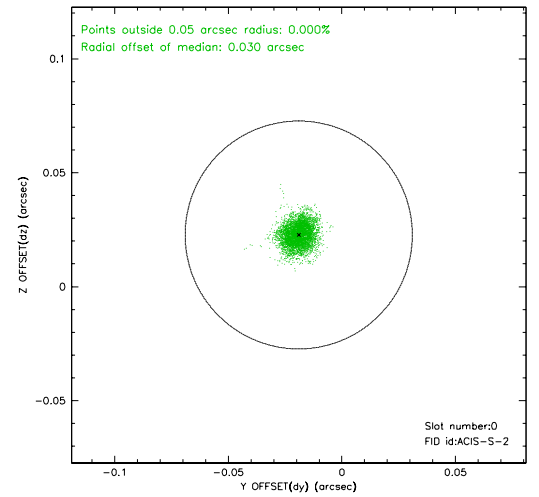
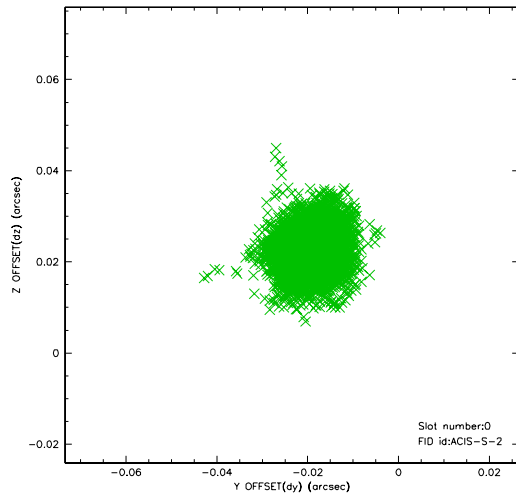


2.4.5 Slot 7

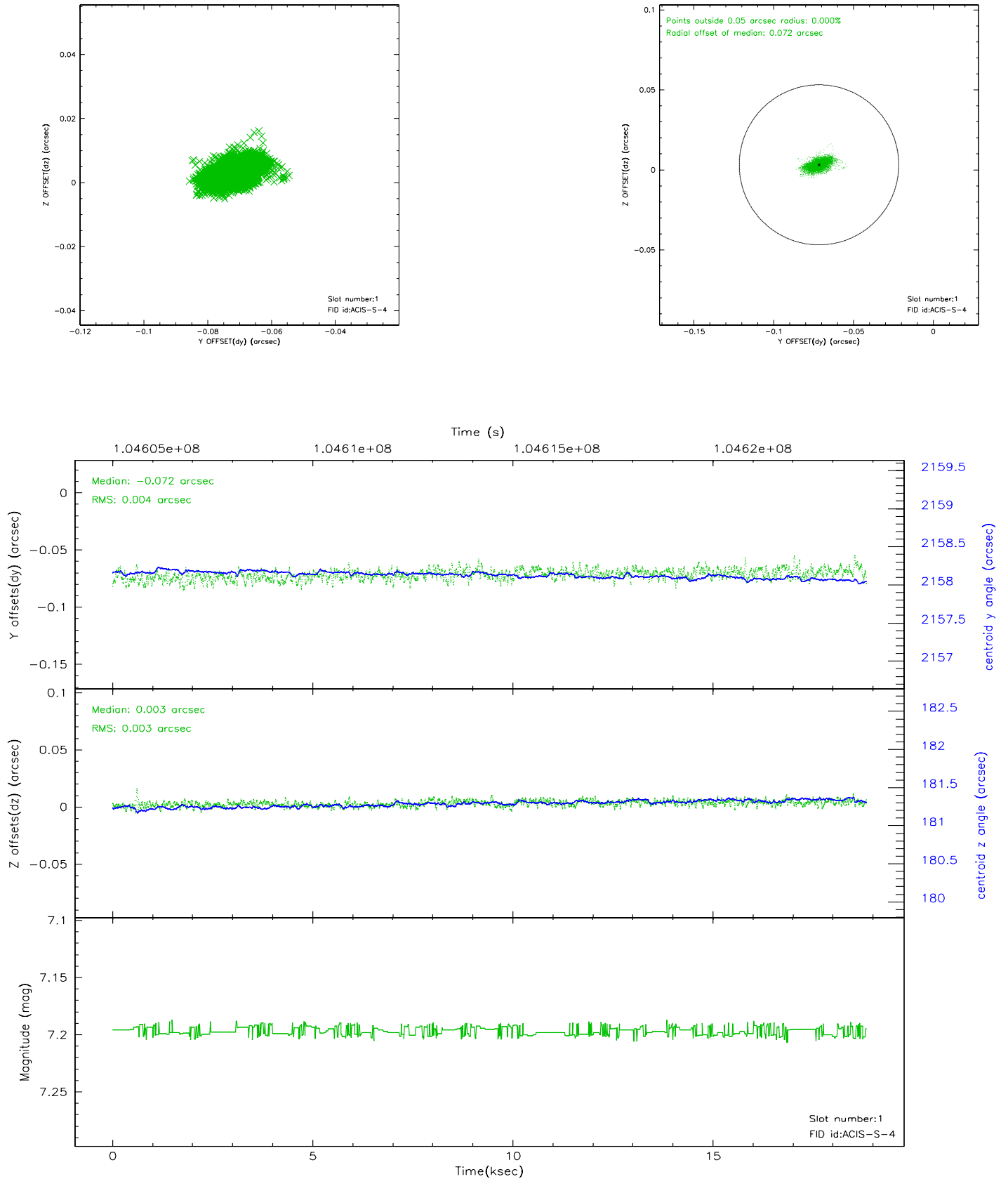


2.5 FID Slots

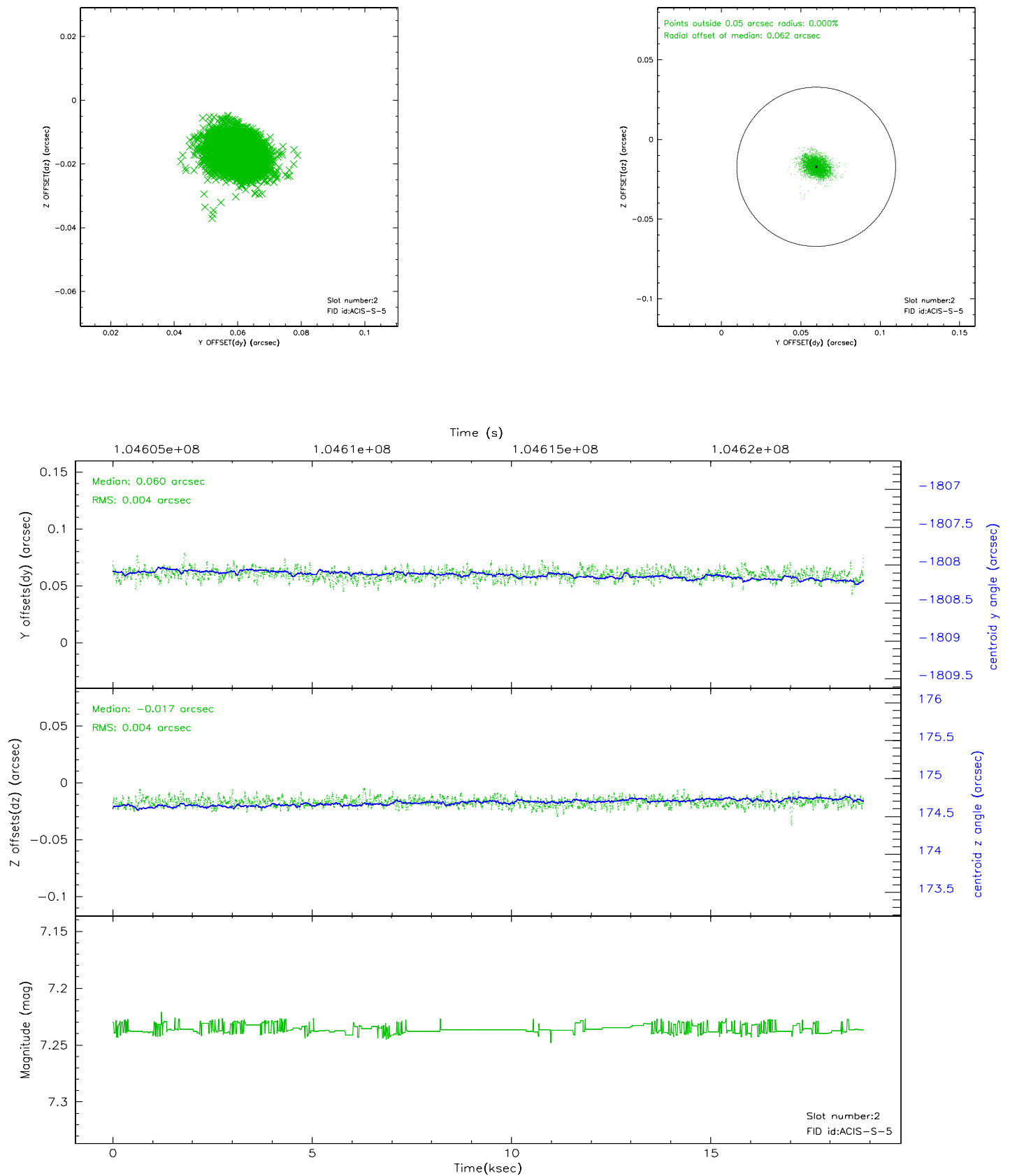
2.5.1 Slot 0



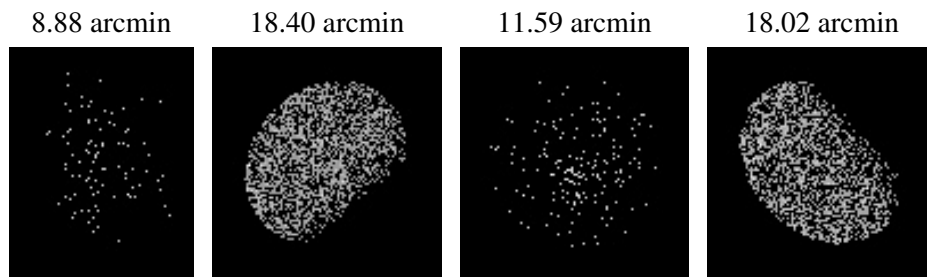
2.5.2 Slot 1



2.5.3 Slot 2



3 Point Sources



A Summary

A.1 Status

V&V Scientist	Jen Lauer
V&V Date (YYYY-MM-DD)	2006.11.29
V&V Edition	1
V&V Disposition and Status	OK
V&V Charge Time	18

A.2 Comments

Window constraint met.