

# V&V Reference Report

## L2 ASCDS Version : 8.4.4

Observation 8653 - L2 Version 2  
Chandra X-Ray Center

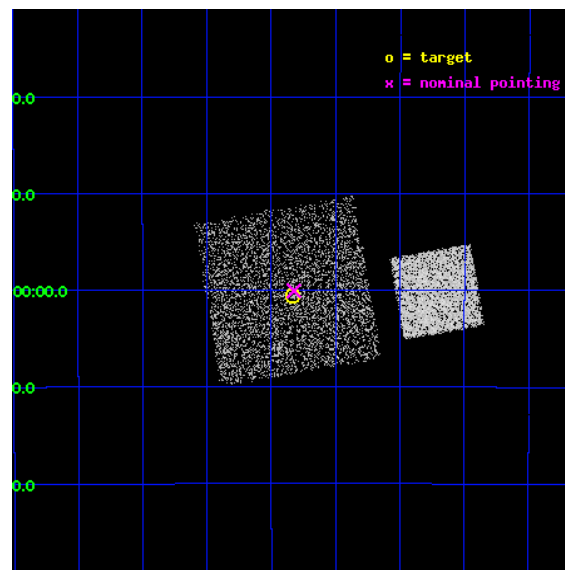
L2 Processing Date : May 14 2012

## Contents

<b>1</b>	<b>Front</b>	<b>2</b>
<b>2</b>	<b>OBI</b>	<b>3</b>
2.1	OBI . . . . .	3
2.1.1	Images . . . . .	3
2.1.2	Bias . . . . .	3
2.1.3	Parameters . . . . .	4
2.1.4	Events . . . . .	4
2.2	Compared Parameters . . . . .	5
2.3	Aspect . . . . .	6
2.4	Star Slots . . . . .	9
2.4.1	Slot 3 . . . . .	9
2.4.2	Slot 4 . . . . .	10
2.4.3	Slot 5 . . . . .	11
2.4.4	Slot 6 . . . . .	12
2.4.5	Slot 7 . . . . .	13
2.5	FID Slots . . . . .	14
2.5.1	Slot 0 . . . . .	14
2.5.2	Slot 1 . . . . .	15
2.5.3	Slot 2 . . . . .	16
<b>A</b>	<b>Summary</b>	<b>17</b>
A.1	Status . . . . .	17
A.2	Comments . . . . .	17

# 1 Front

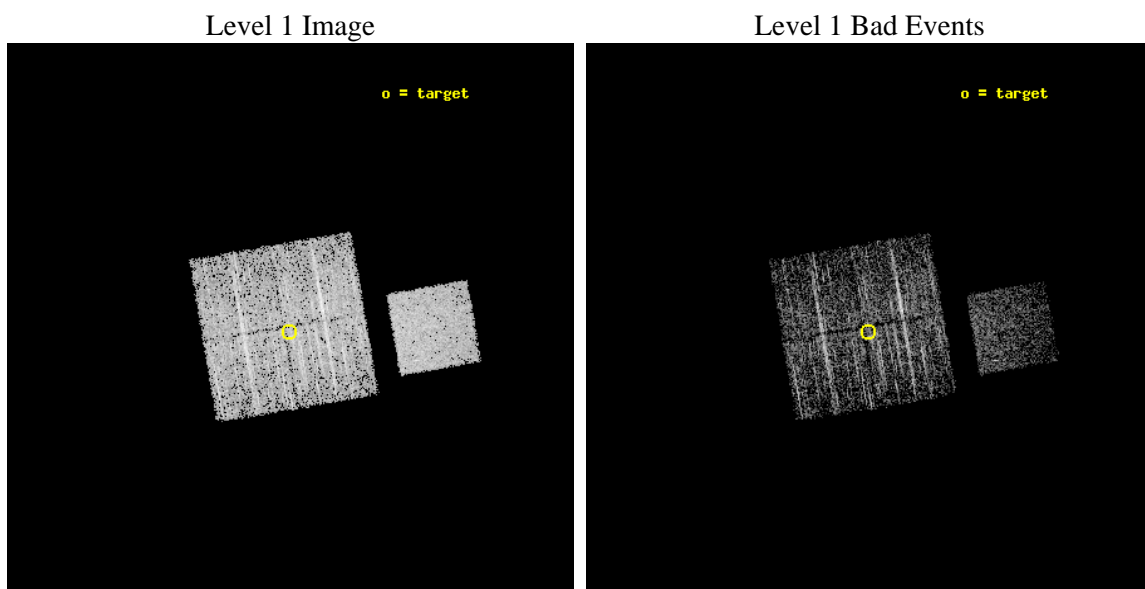
seq_num	400704	Sequence number
obs_id	8653	Observation id
title	The Galactic Bulge Survey: categorising the plethora of faint X-ray sources in the Galactic Bulge	Proposal title
observer	Prof Mariano Mendez	Principal investigator
object	GBSGTO1	Source name
dtcycle	0	&#160
cycle	P	events from which exps? Prim/Second/Both
ra_targ	266.957431	Observer's specified target RA [deg]
dec_targ	-26.009348	Observer's specified target Dec [deg]
ra_nom	266.95613439362	Nominal RA [deg]
dec_nom	-26.001249912589	Nominal Dec [deg]
roll_nom	80.208050900778	Nominal Roll [deg]
revision	2	Processing version of data
ontime	2038.5183470249	Sum of GTIs [s]
livetime	2011.8836040857	Livetime [s]
ontime0	2038.395227015	Sum of GTIs [s]
ontime1	2035.2952467799	Sum of GTIs [s]
ontime2	2035.3363066316	Sum of GTIs [s]
ontime3	2038.5183470249	Sum of GTIs [s]
ontime7	2038.5593870282	Sum of GTIs [s]
l2events	14514	Number of level 2 events



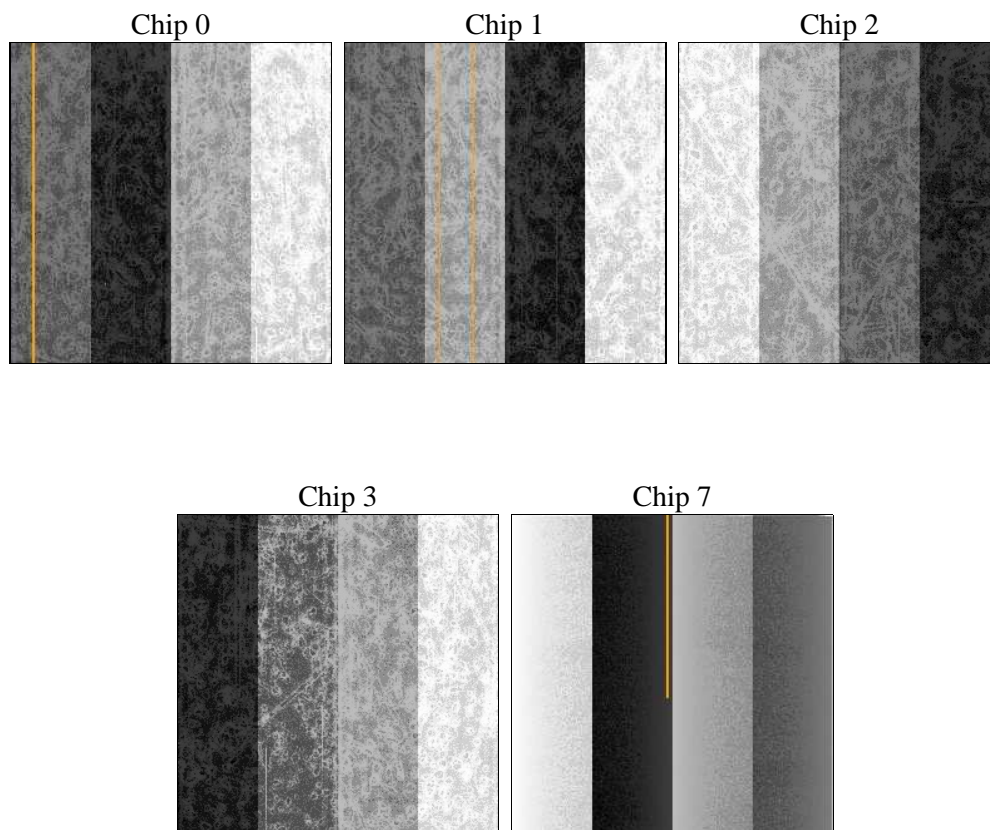
## 2 OBI

### 2.1 OBI

#### 2.1.1 Images



#### 2.1.2 Bias



### 2.1.3 Parameters

obi_num	1	Obi number	sched_exp_time	2000.000000	[s] Scheduled observation exposure time
ascdsver	8.4.4	Processing system revision	ontime	2038.5183470249	Sum of GTIs [s]
caldsver	4.4.9	&#160	ontime0	2038.395227015	Sum of GTIs [s]
date	2012-05-14T23:52:48	Date and time of file creation	ontime1	2035.2952467799	Sum of GTIs [s]
revision	2	Processing version of data	ontime2	2035.3363066316	Sum of GTIs [s]
			ontime3	2038.5183470249	Sum of GTIs [s]
			ontime7	2038.5593870282	Sum of GTIs [s]
			l1events	86761	Number of level 1 events

### 2.1.4 Events

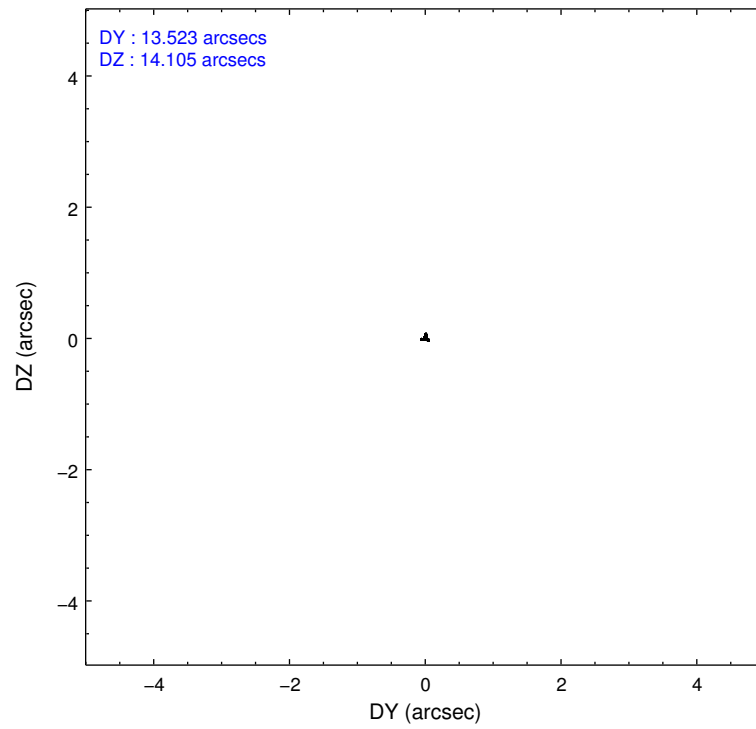
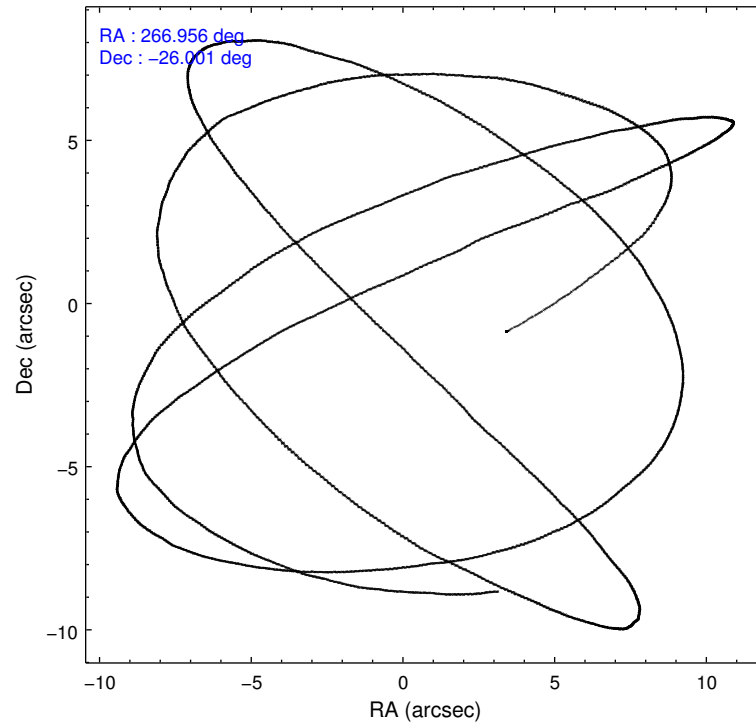
	ccd 0	ccd 1	ccd 2	ccd 3	ccd 7
level 1 events	14812	16980	17740	17582	19647
rejected events	13029	14888	15932	15746	11107
rejected %	87%	87%	89%	89%	56%

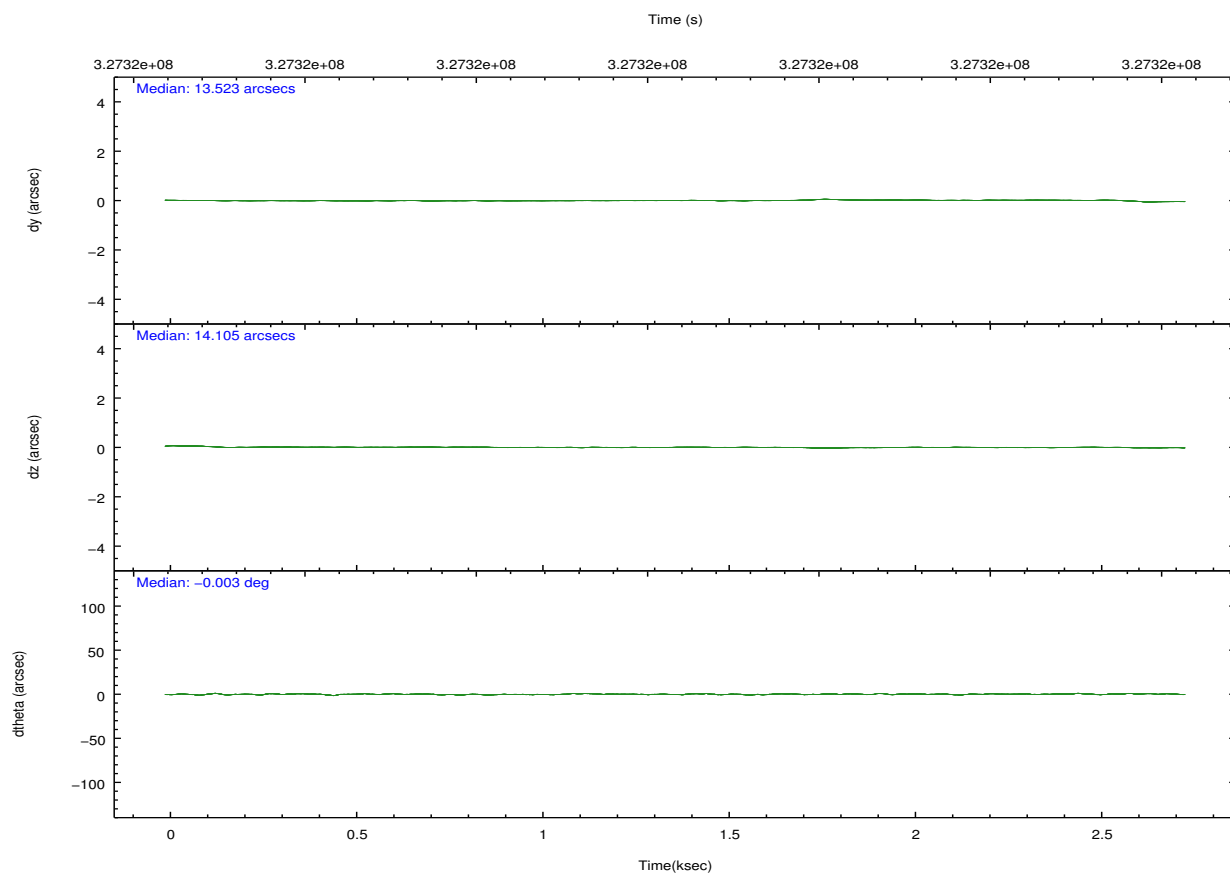
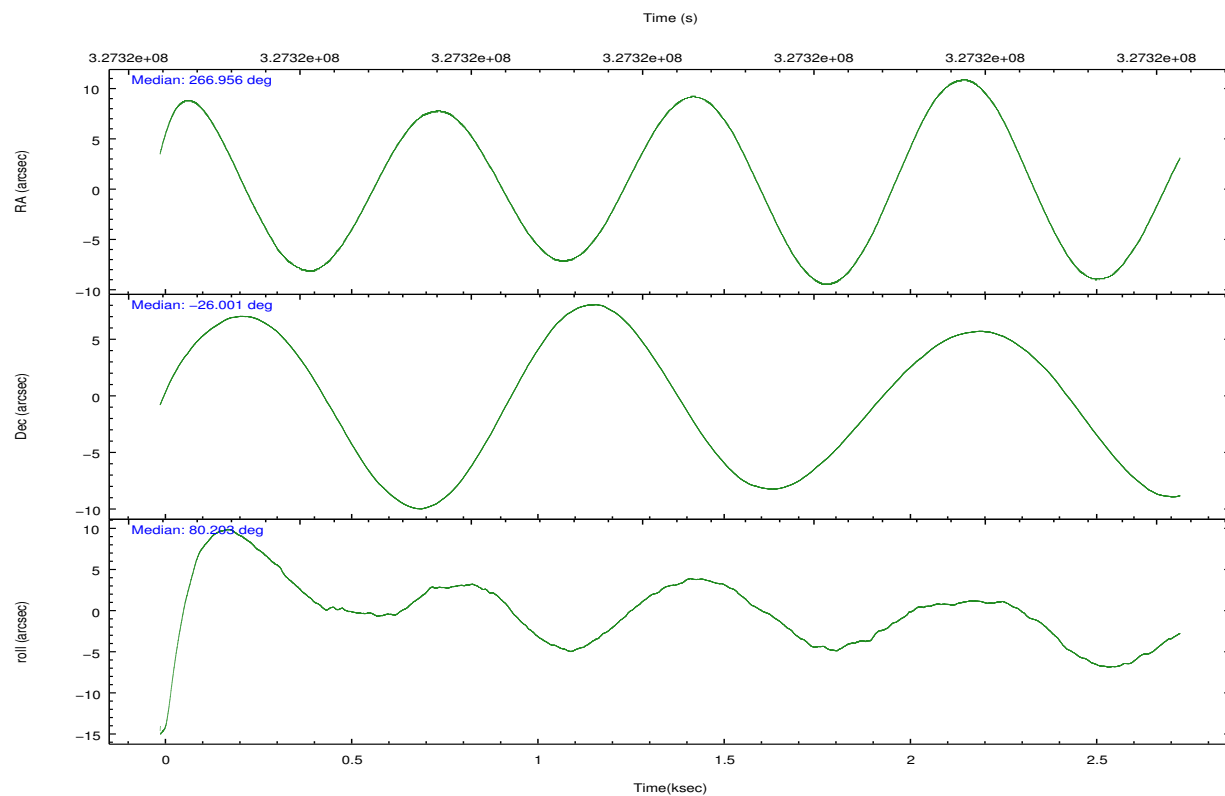
	ccd 0	ccd 1	ccd 2	ccd 3	ccd 7
grade 0 events	767	923	757	846	854
	5%	5%	4%	4%	4%
grade 1 events	6	12	8	9	26
	0%	0%	0%	0%	0%
grade 2 events	396	455	441	401	1899
	2%	2%	2%	2%	9%
grade 3 events	205	215	201	181	845
	1%	1%	1%	1%	4%
grade 4 events	182	209	200	188	861
	1%	1%	1%	1%	4%
grade 5 events	593	695	603	649	2016
	4%	4%	3%	3%	10%
grade 6 events	361	404	334	339	4613
	2%	2%	1%	1%	23%
grade 7 events	12302	14067	15196	14969	8533
	83%	82%	85%	85%	43%

## 2.2 Compared Parameters

Parameter	Planned	Actual	Parameter	Planned	Actual
Instrument	ACIS	ACIS	Obspar format version number	7	7
Detector	ACIS-01237	ACIS-01237	Obspar file type	PREDICTED	ACTUAL
Grating	NONE	NONE	Obspar update status	NONE	UPDATED
Data mode	VFAINT	VFAINT	CCD I0 on	Y	Y
Observation mode	POINTING	POINTING	CCD I1 on	Y	Y
[deg] Pointing RA	266.966944	266.9561343936223	CCD I2 on	Y	Y
[deg] Pointing Dec	-26.027098	-26.00124991258923	CCD I3 on	Y	Y
[deg] Pointing Roll	80.004178	80.20805090077808	CCD S0 on	N	N
[mm] SIM focus pos	-0.782348	-0.7809083437167272	CCD S1 on	N	N
[mm] SIM defocus	0	0.001439871863259334	CCD S2 on	N	N
[mm] SIM translation stage pos	-233.592463	-233.5874344608287	CCD S3 on	O1	Y
[mm] SIM translation stage offset	0	-0.005018542100998502	CCD S4 on	N	N
[s] Observation start time (MET)	327319443.184000	327318090.27563	CCD S5 on	N	N
Observation start date	2008-05-16T10:02:58	2008-05-16T09:41:30	Number of optional ACIS chips dropped	0	0
[s] Observation end time (MET)	327321443.184000	327321577.3258	On-chip summing requested	N	N
Observation end date	2008-05-16T10:36:18	2008-05-16T10:39:37	Subarray requested	NONE	NONE
Read mode	TIMED	TIMED	Alternating exposures requested	N	N
			[s] Primary exposure time	0.000000	3.1

## 2.3 Aspect



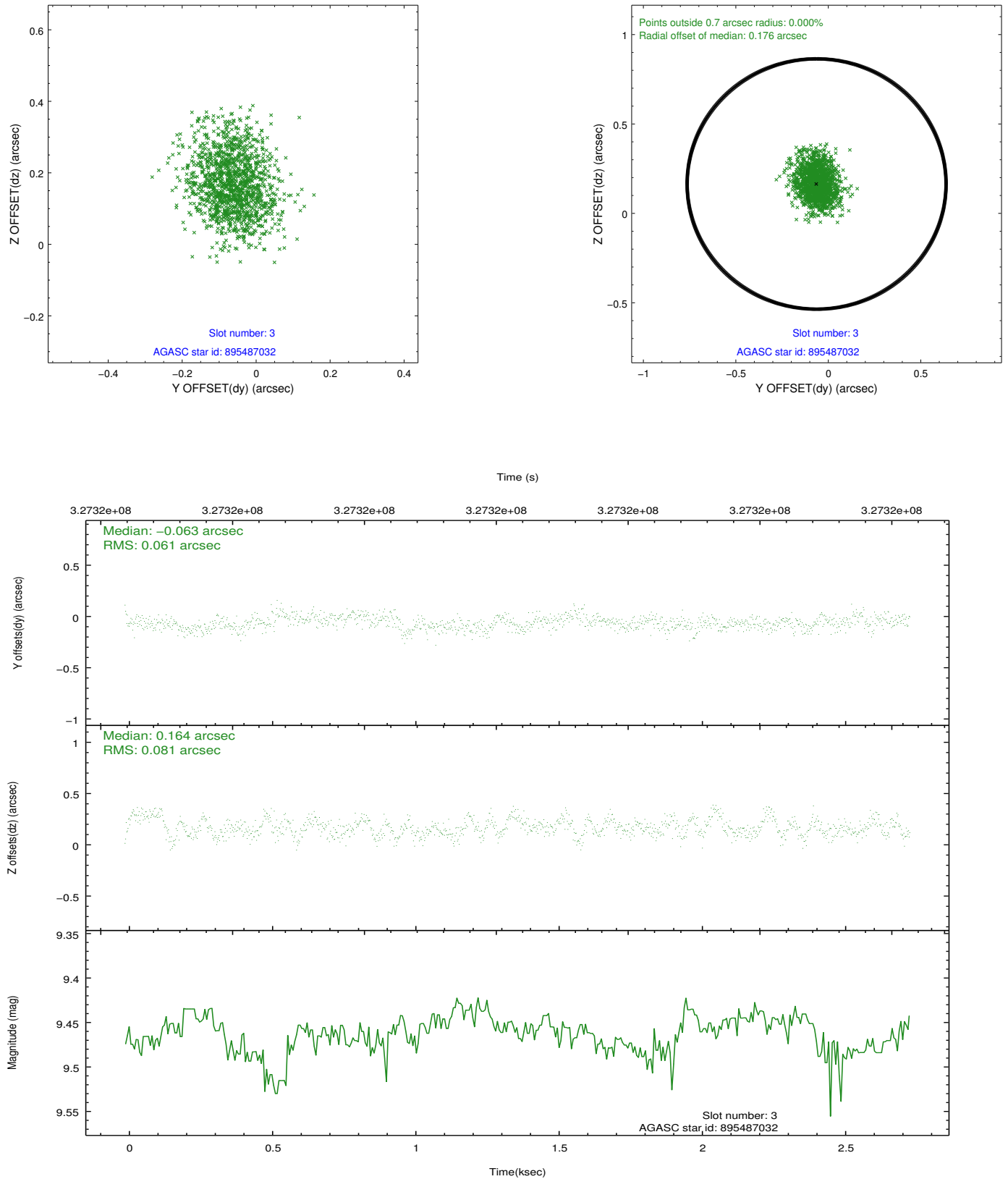


### Slot Statistics

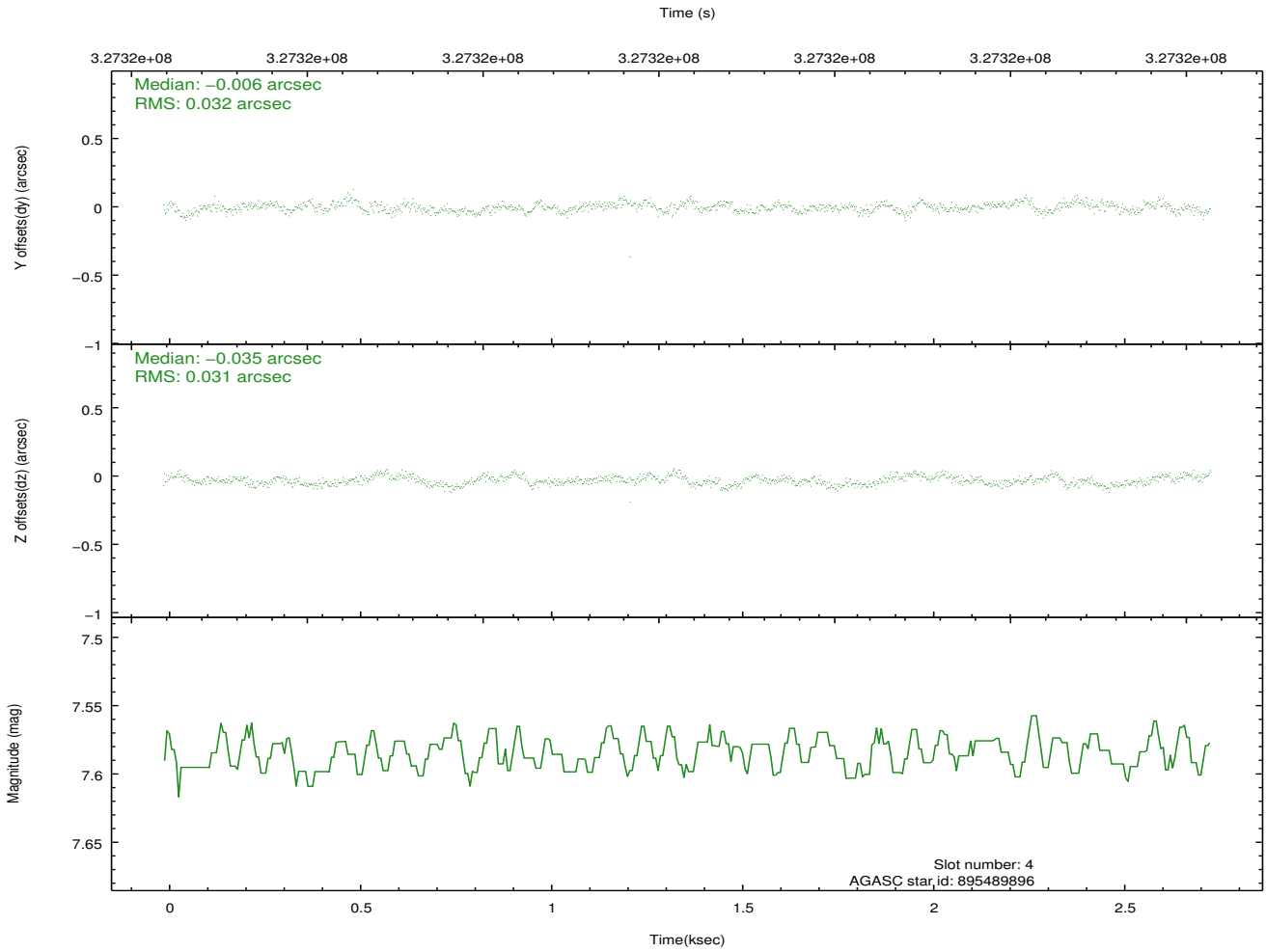
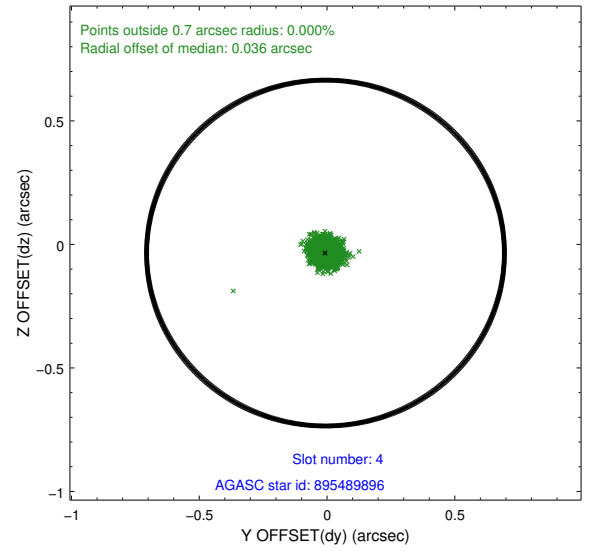
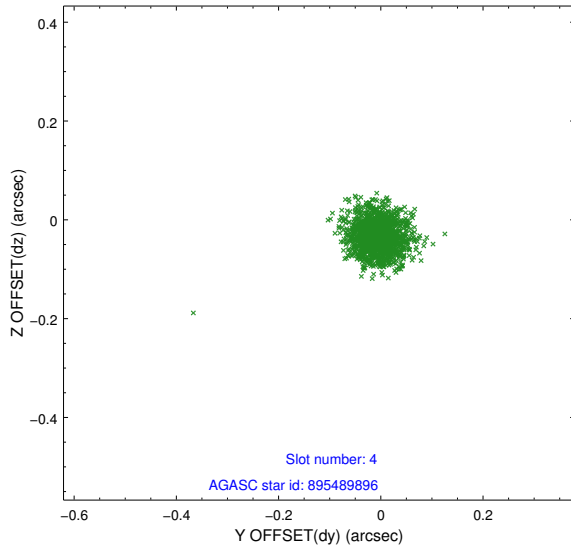
slot	status	id	mag	n_pts	med_dy	med_dz	dr1	dr2	ra	dec	mean_y	mean_z
0	FID	ACIS-I-1	7.06	668	0.006	0.051	0.007	0.012	0.000000	0.000000	925.99	-837.62
1	FID	ACIS-I-5	7.04	669	-0.179	0.029	0.006	0.011	0.000000	0.000000	-1821.03	1058.63
2	FID	ACIS-I-6	7.05	668	0.082	-0.009	0.007	0.012	0.000000	0.000000	389.02	1705.79
3	GUIDE	895487032	9.46	1337	-0.063	0.164	0.110	0.180	267.405172	-25.982039	403.69	-1369.01
4	GUIDE	895489896	7.59	1337	-0.006	-0.035	0.047	0.074	266.605795	-26.200300	-817.91	1038.89
5	GUIDE	896015112	9.18	1337	0.118	-0.036	0.089	0.145	266.684847	-26.286161	-1078.01	734.99
6	GUIDE	896009584	9.25	1334	0.087	0.028	0.106	0.174	266.891313	-26.347528	-1179.13	40.19
7	GUIDE	895488248	9.16	1333	-0.138	-0.126	0.080	0.135	266.505717	-25.541692	1457.19	1778.02

## 2.4 Star Slots

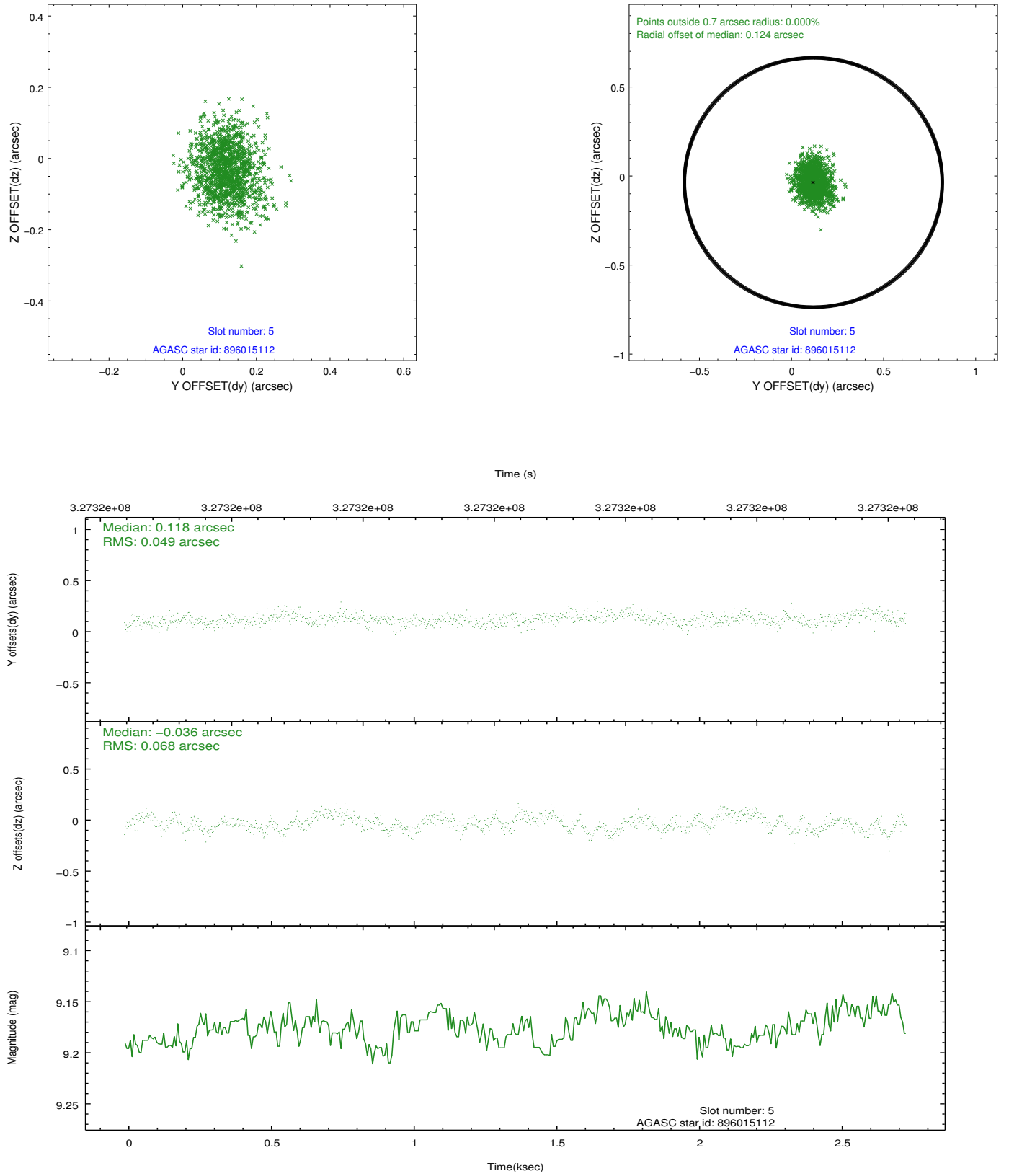
### 2.4.1 Slot 3



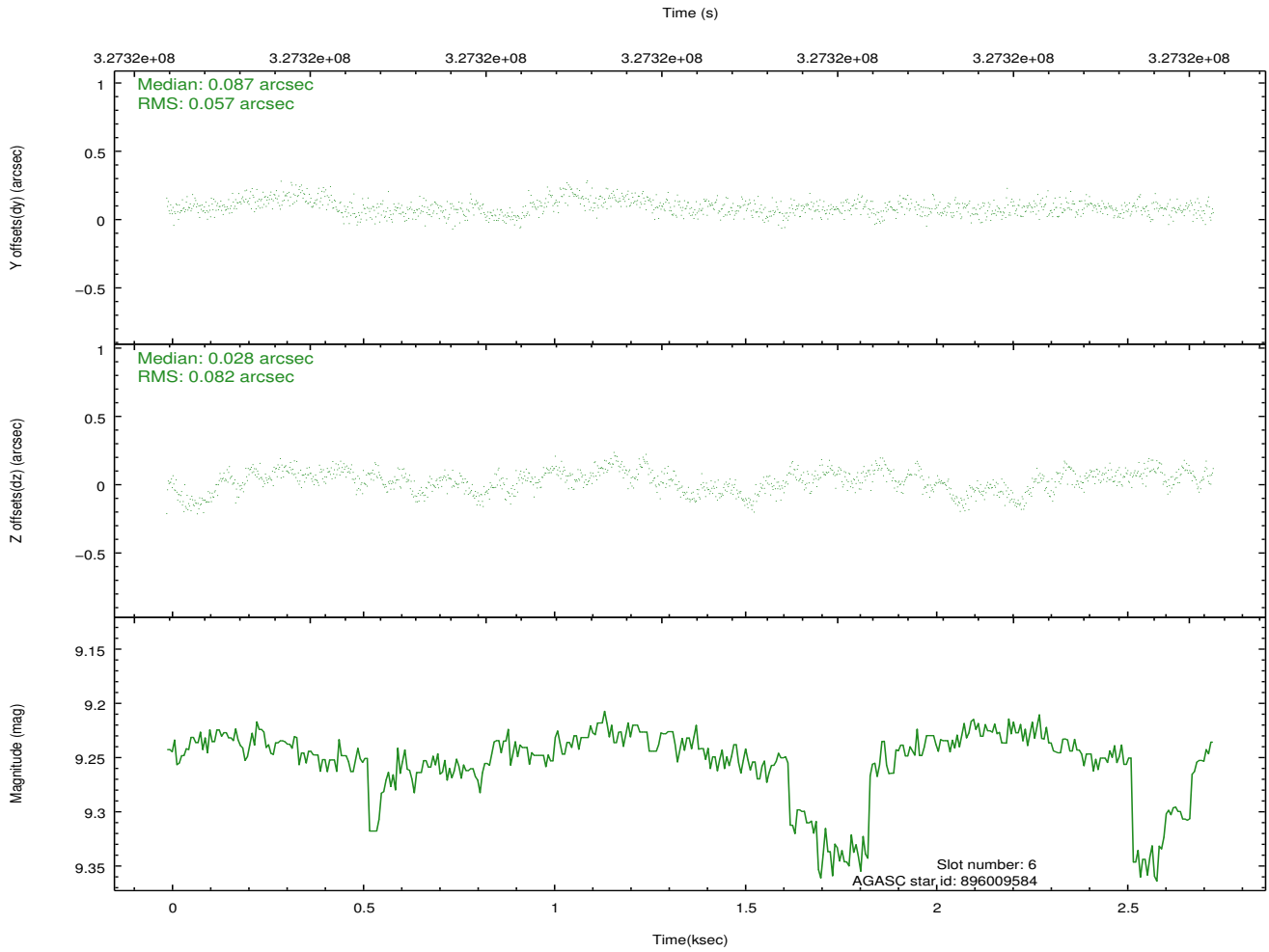
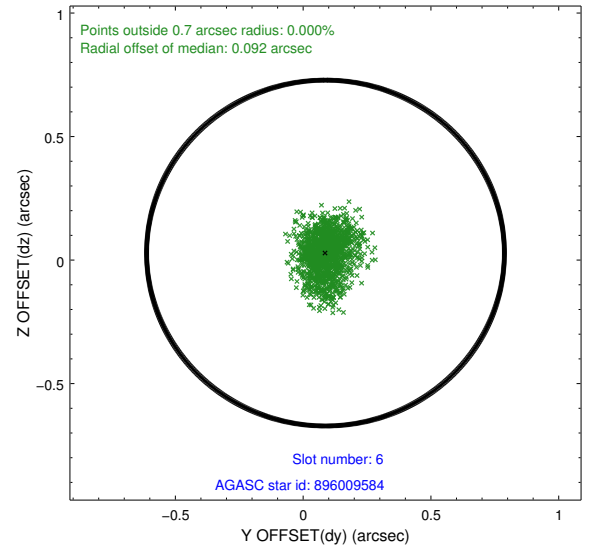
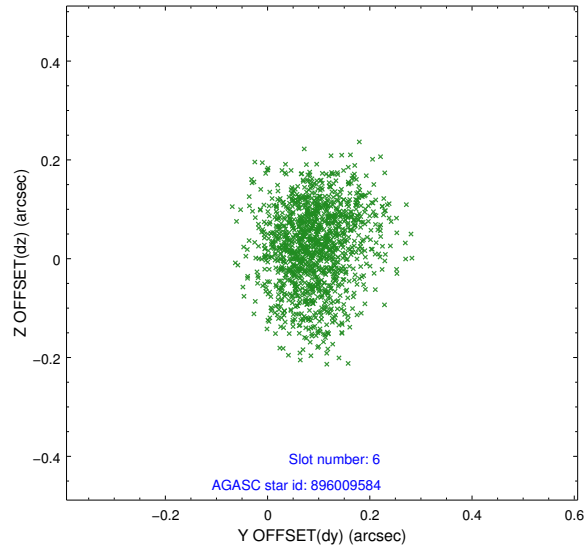
## 2.4.2 Slot 4



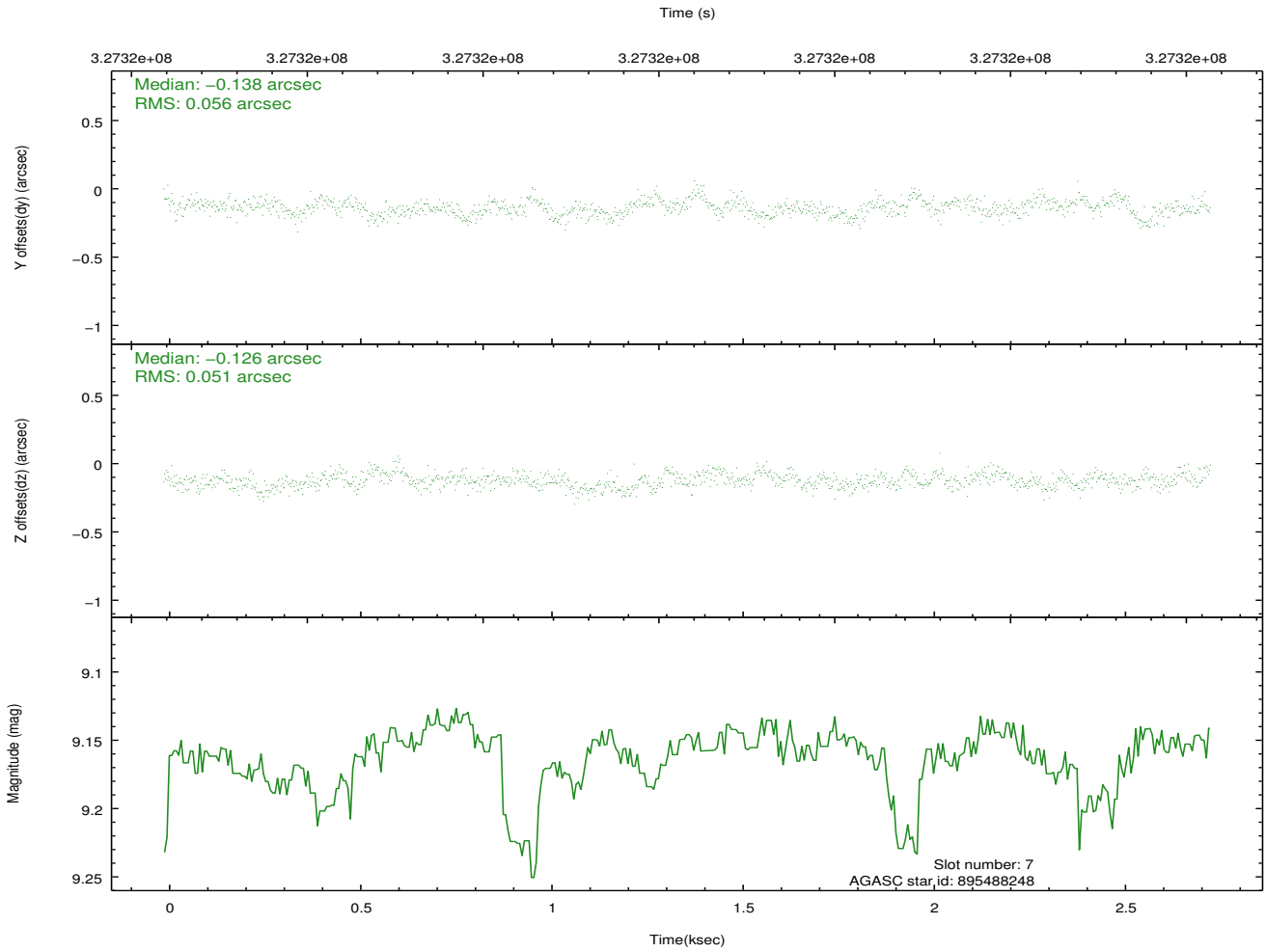
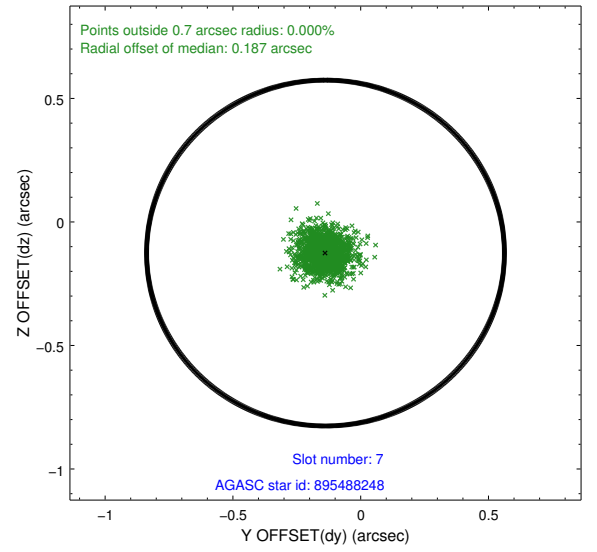
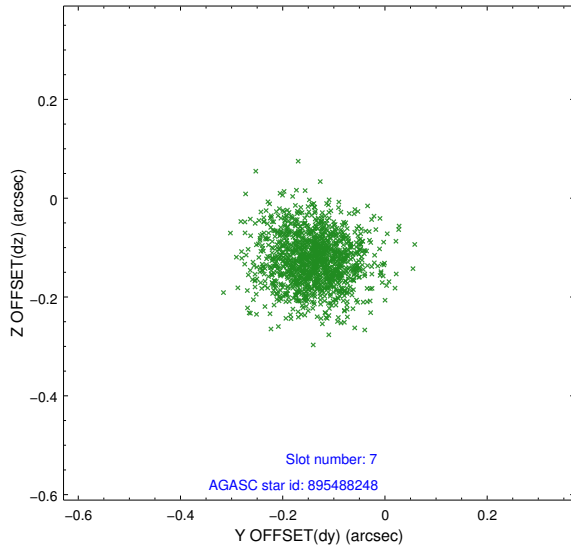
### 2.4.3 Slot 5



## 2.4.4 Slot 6

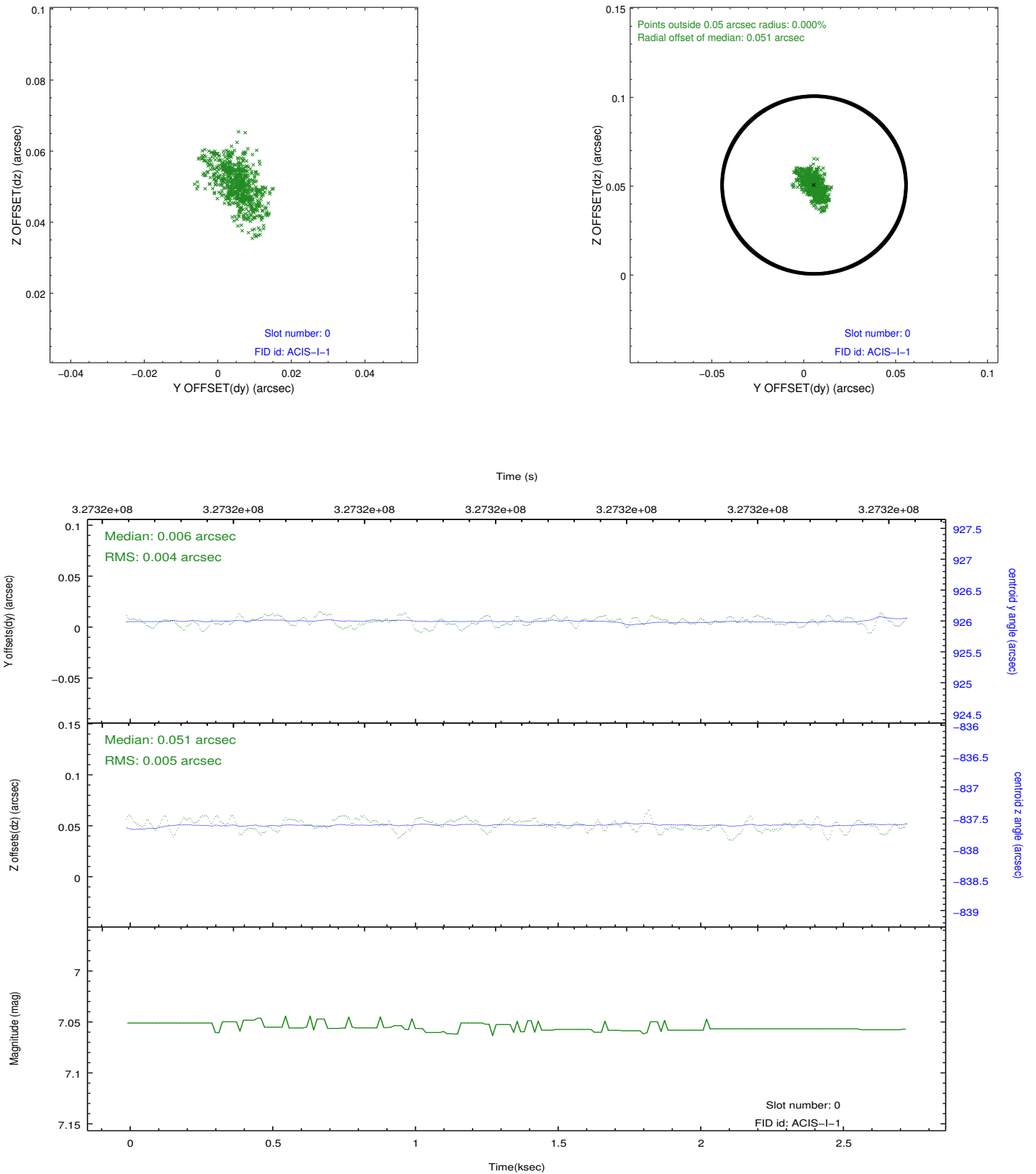


## 2.4.5 Slot 7

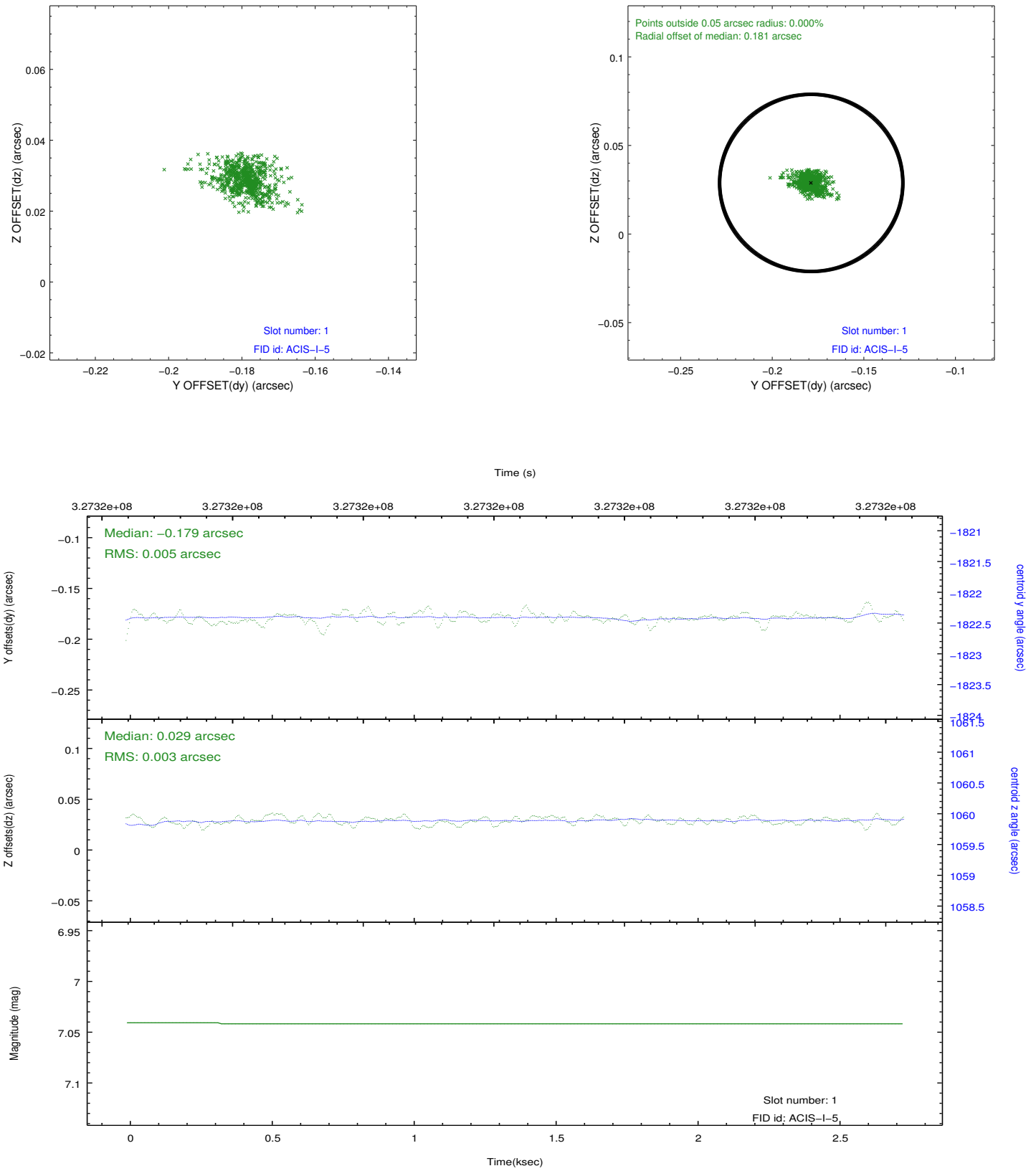


## 2.5 FID Slots

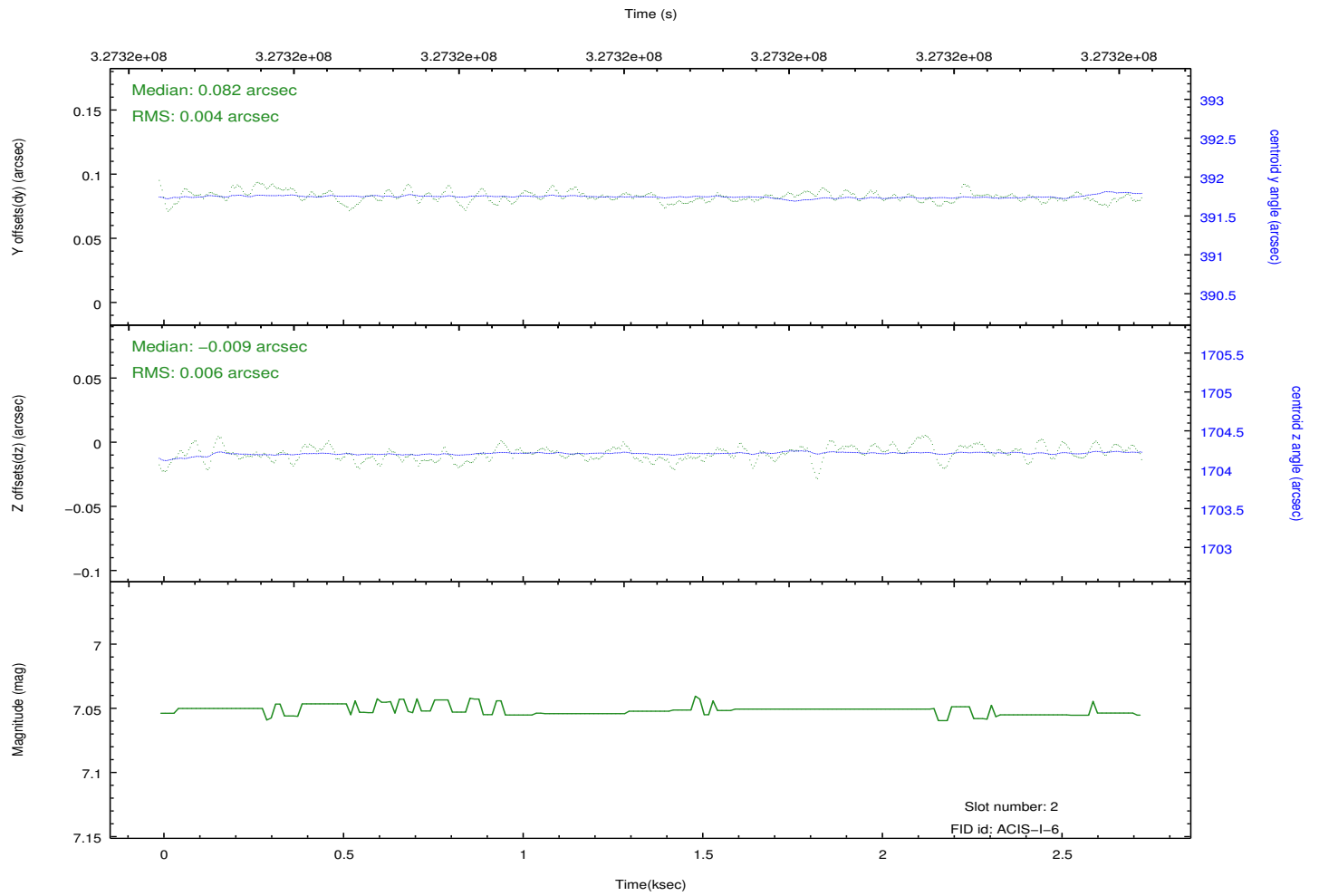
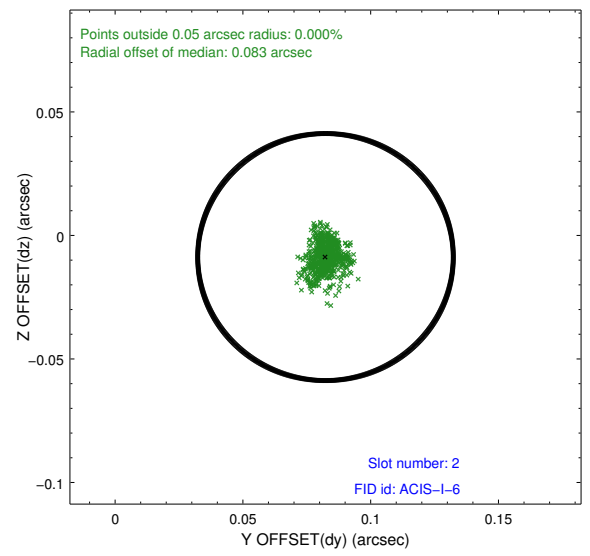
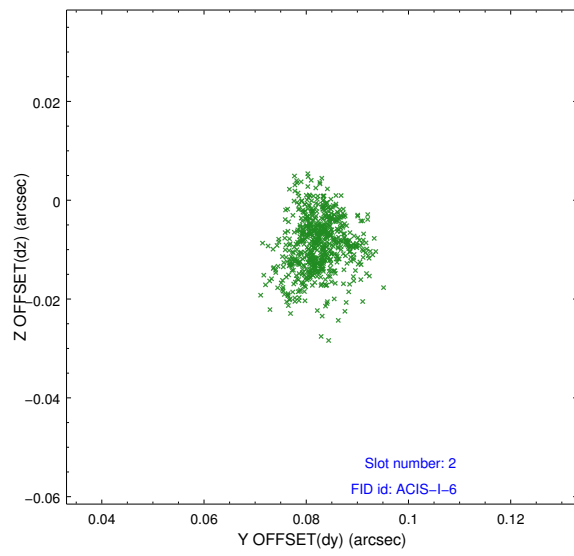
### 2.5.1 Slot 0



## 2.5.2 Slot 1



### 2.5.3 Slot 2



## A Summary

### A.1 Status

V&V Scientist	Beth Sundheim
V&V Date (YYYY-MM-DD)	2012.05.18
V&V Edition	1
V&V Disposition and Status	OK
V&V Charge Time	2.03980001

### A.2 Comments