

V&V Reference Report

L2 ASCDS Version : 8.4.4

Observation 8623 - L2 Version 2
Chandra X-Ray Center

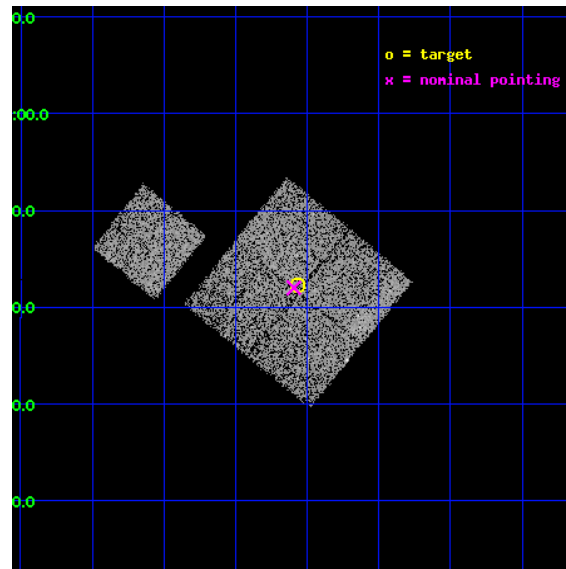
L2 Processing Date : May 5 2012

Contents

1	Front	2
2	OBI	3
2.1	OBI	3
2.1.1	Images	3
2.1.2	Bias	3
2.1.3	Parameters	4
2.1.4	Events	4
2.2	Compared Parameters	5
2.3	Aspect	6
2.4	Star Slots	9
2.4.1	Slot 3	9
2.4.2	Slot 4	10
2.4.3	Slot 5	11
2.4.4	Slot 6	12
2.4.5	Slot 7	13
2.5	FID Slots	14
2.5.1	Slot 0	14
2.5.2	Slot 1	15
2.5.3	Slot 2	16
A	Summary	17
A.1	Status	17
A.2	Comments	17

1 Front

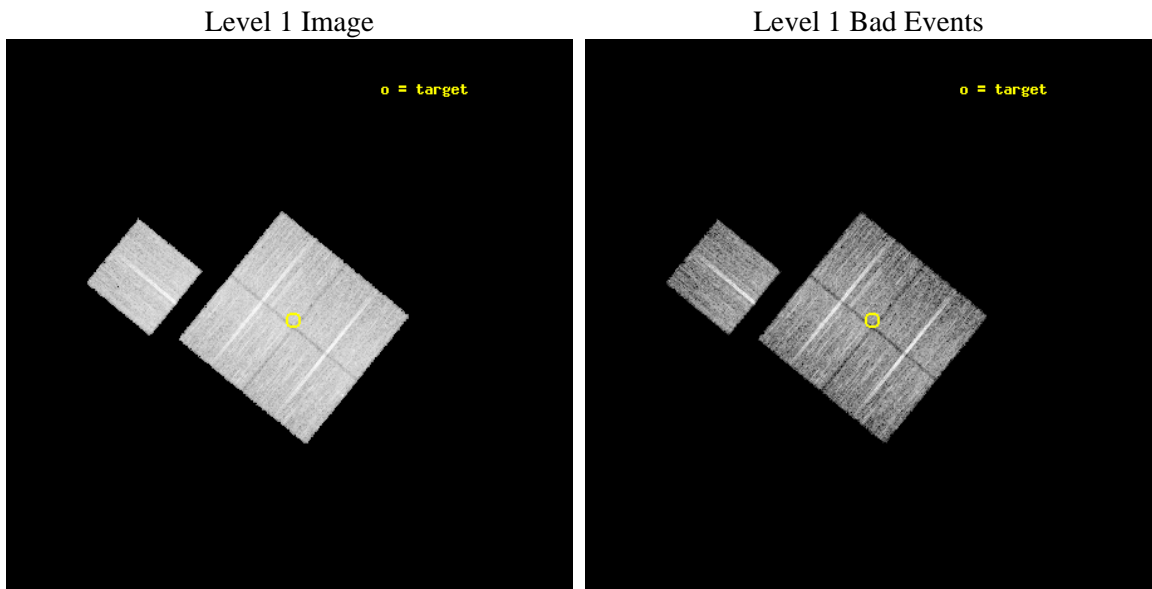
seq_num	900760	Sequence number
obs_id	8623	Observation id
title	Chandra Observations of the DEEP2 Fields	Proposal title
observer	Dr. Stephen Murray	Principal investigator
object	DEEP2 Field 4	Source name
dtcycle	0	
cycle	P	events from which exps? Prim/Second/Both
ra_targ	37.391579	Observer's specified target RA [deg]
dec_targ	0.704524	Observer's specified target Dec [deg]
ra_nom	37.398358619788	Nominal RA [deg]
dec_nom	0.70004629346918	Nominal Dec [deg]
roll_nom	309.23860840427	Nominal Roll [deg]
revision	2	Processing version of data
ontime	8778.581890285	Sum of GTIs [s]
livetime	8663.8832551905	Livetime [s]
ontime0	8778.4587702751	Sum of GTIs [s]
ontime1	8778.4998003244	Sum of GTIs [s]
ontime2	8778.5408502817	Sum of GTIs [s]
ontime3	8778.581890285	Sum of GTIs [s]
ontime6	8775.276720047	Sum of GTIs [s]
l2events	29822	Number of level 2 events



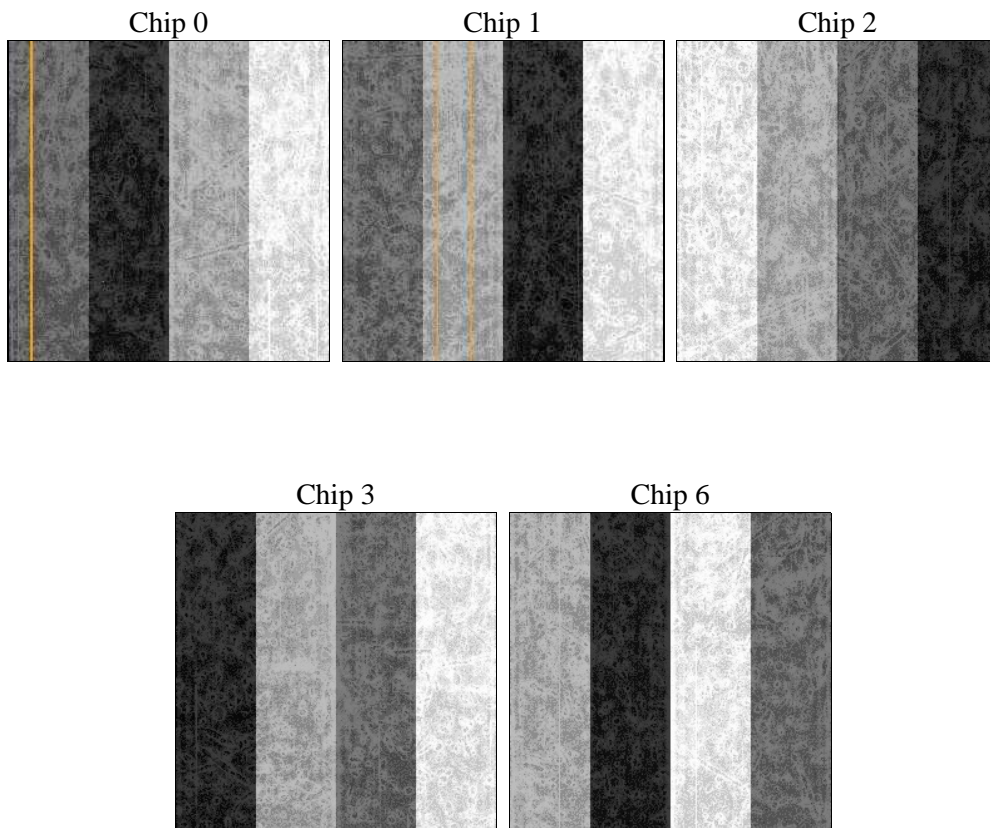
2 OBI

2.1 OBI

2.1.1 Images



2.1.2 Bias



2.1.3 Parameters

obi_num	0	Obi number	sched_exp_time	9000.000000	[s] Scheduled observation exposure time
ascdsver	8.4.4	Processing system revision	ontime	8778.581890285	Sum of GTIs [s]
caldsver	4.4.9	 	ontime0	8778.4587702751	Sum of GTIs [s]
date	2012-05-05T06:34:24	Date and time of file creation	ontime1	8778.4998003244	Sum of GTIs [s]
revision	2	Processing version of data	ontime2	8778.5408502817	Sum of GTIs [s]
			ontime3	8778.581890285	Sum of GTIs [s]
			ontime6	8775.276720047	Sum of GTIs [s]
			l1events	355273	Number of level 1 events

2.1.4 Events

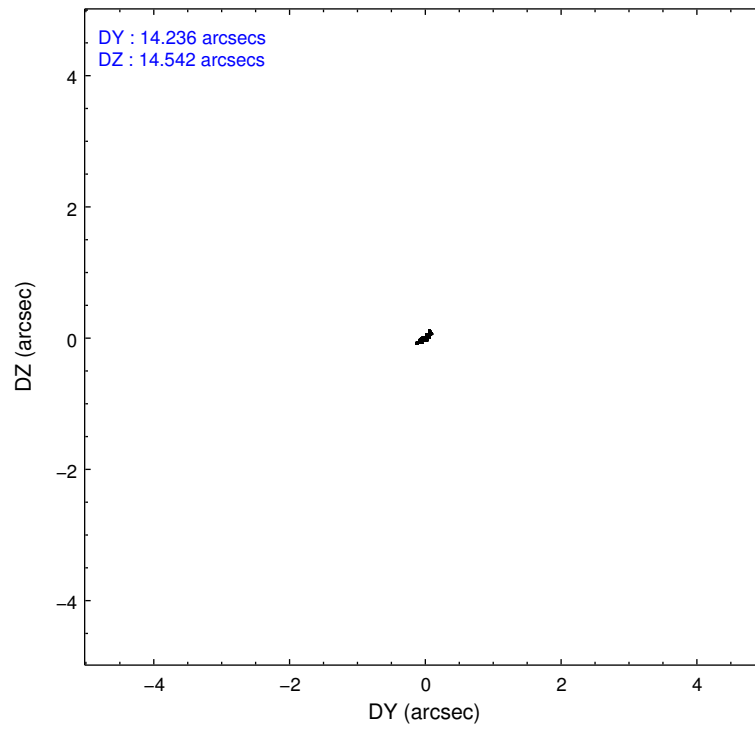
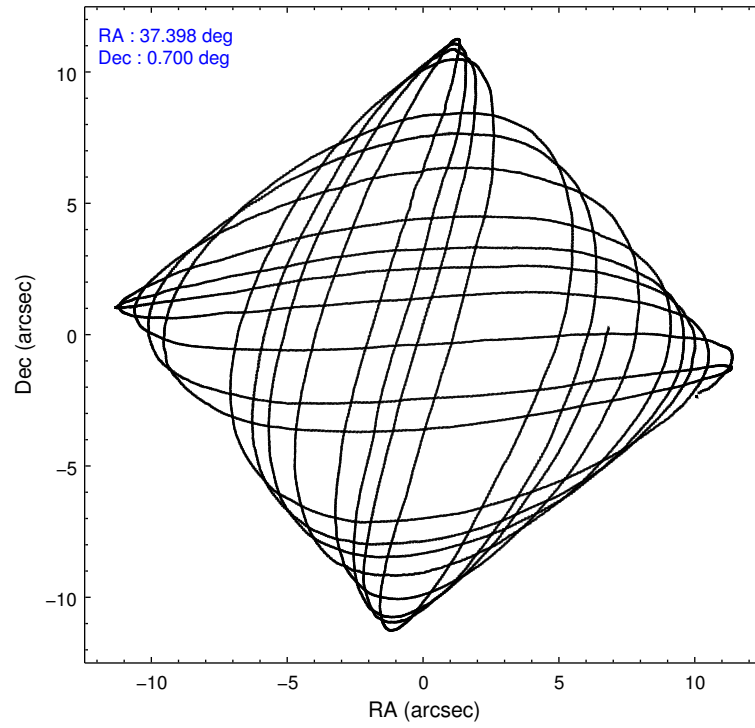
	ccd 0	ccd 1	ccd 2	ccd 3	ccd 6
level 1 events	68297	66670	78403	69746	72157
rejected events	61154	58598	71700	63143	64812
rejected %	89%	87%	91%	90%	89%

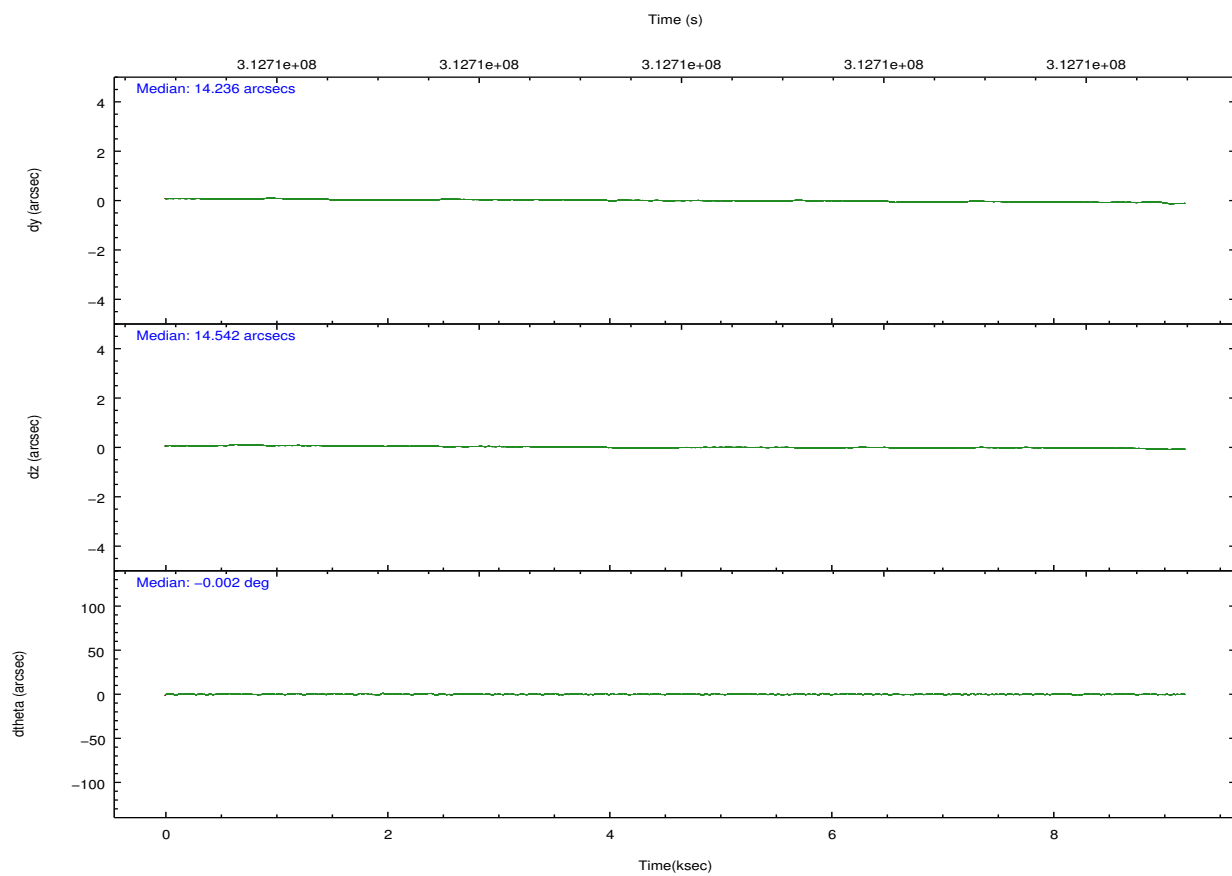
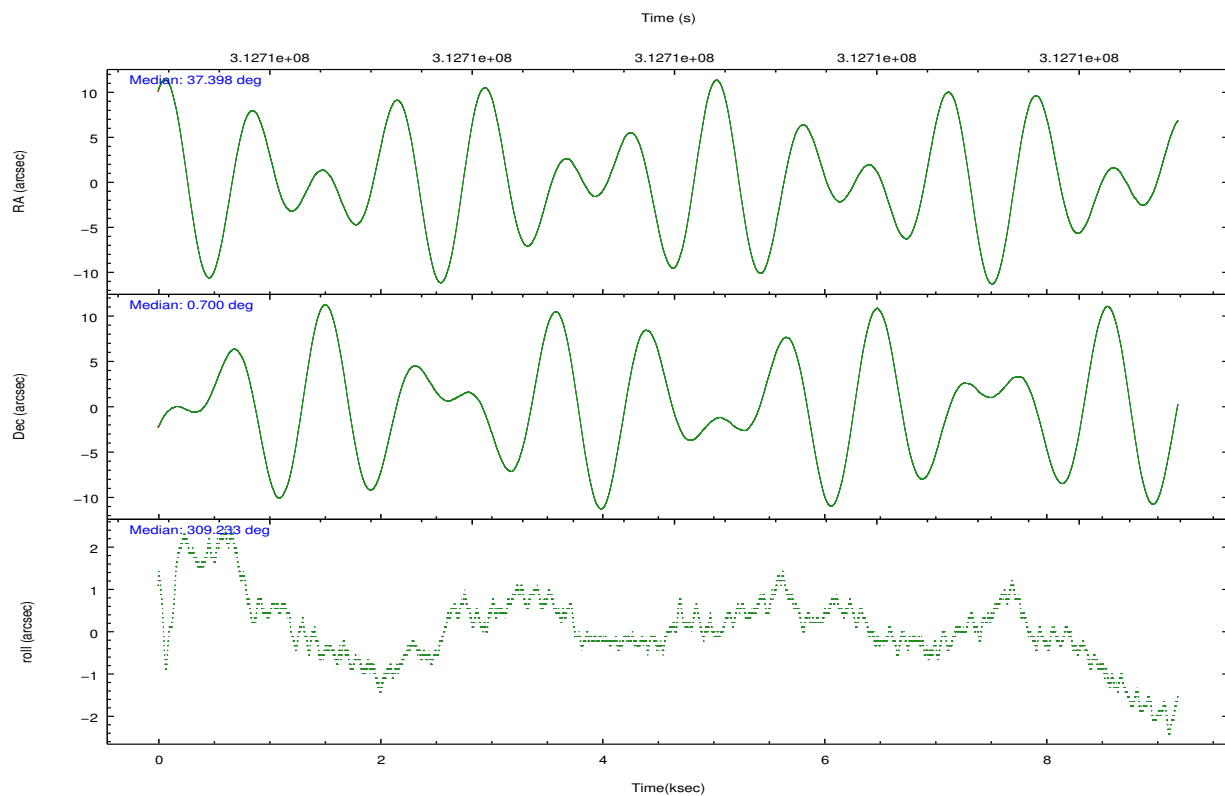
	ccd 0	ccd 1	ccd 2	ccd 3	ccd 6
grade 0 events	2612	2903	2412	2320	2603
	3%	4%	3%	3%	3%
grade 1 events	31	38	50	24	35
	0%	0%	0%	0%	0%
grade 2 events	1704	1834	1635	1417	1575
	2%	2%	2%	2%	2%
grade 3 events	782	886	695	746	784
	1%	1%	0%	1%	1%
grade 4 events	733	870	750	732	783
	1%	1%	0%	1%	1%
grade 5 events	2426	2675	2411	2911	2764
	3%	4%	3%	4%	3%
grade 6 events	1313	1580	1212	1393	1602
	1%	2%	1%	1%	2%
grade 7 events	58696	55884	69238	60203	62011
	85%	83%	88%	86%	85%

2.2 Compared Parameters

Parameter	Planned	Actual	Parameter	Planned	Actual
Instrument	ACIS	ACIS	Obspar format version number	7	7
Detector	ACIS-01236	ACIS-01236	Obspar file type	PREDICTED	ACTUAL
Grating	NONE	NONE	Obspar update status	NONE	UPDATED
Data mode	VFAINT	VFAINT	CCD I0 on	Y	Y
Observation mode	POINTING	POINTING	CCD I1 on	Y	Y
[deg] Pointing RA	37.372570	37.3983586197877	CCD I2 on	Y	Y
[deg] Pointing Dec	0.709711	0.7000462934691833	CCD I3 on	Y	Y
[deg] Pointing Roll	309.030242	309.2386084042673	CCD S0 on	N	N
[mm] SIM focus pos	-0.782348	-0.7809083437167272	CCD S1 on	N	N
[mm] SIM defocus	0	0.001439871863259334	CCD S2 on	O1	Y
[mm] SIM translation stage pos	-233.592463	-233.5874344608287	CCD S3 on	N	N
[mm] SIM translation stage offset	0	-0.005018542100998502	CCD S4 on	N	N
[s] Observation start time (MET)	312705525.184000	312705148.87864	CCD S5 on	N	N
Observation start date	2007-11-29T06:37:40	2007-11-29T06:32:28	Number of optional ACIS chips dropped	0	0
[s] Observation end time (MET)	312714525.184000	312714659.3416	On-chip summing requested	N	N
Observation end date	2007-11-29T09:07:40	2007-11-29T09:10:59	Subarray requested	NONE	NONE
Read mode	TIMED	TIMED	Alternating exposures requested	N	N
			[s] Primary exposure time	0.000000	3.1

2.3 Aspect



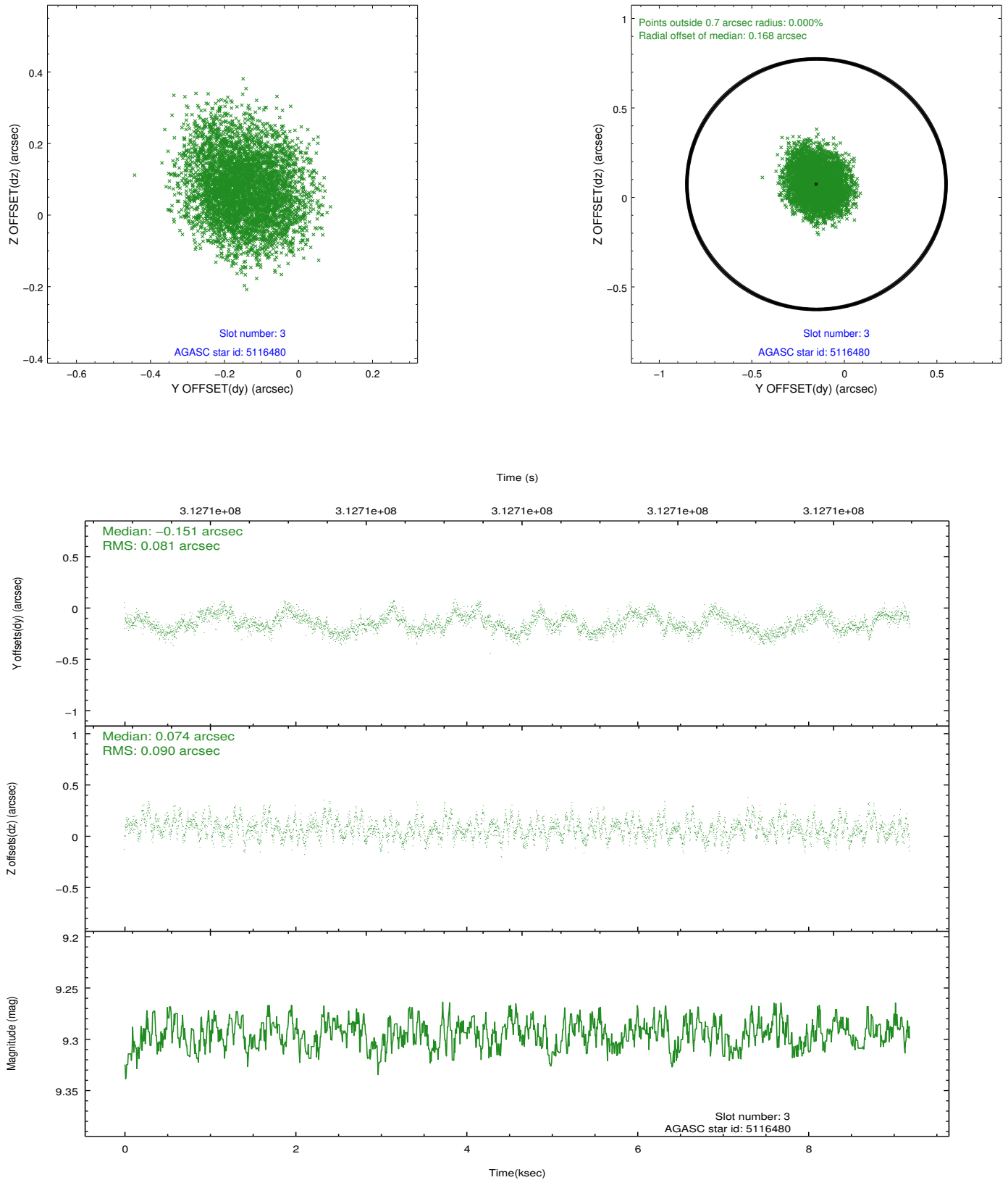


Slot Statistics

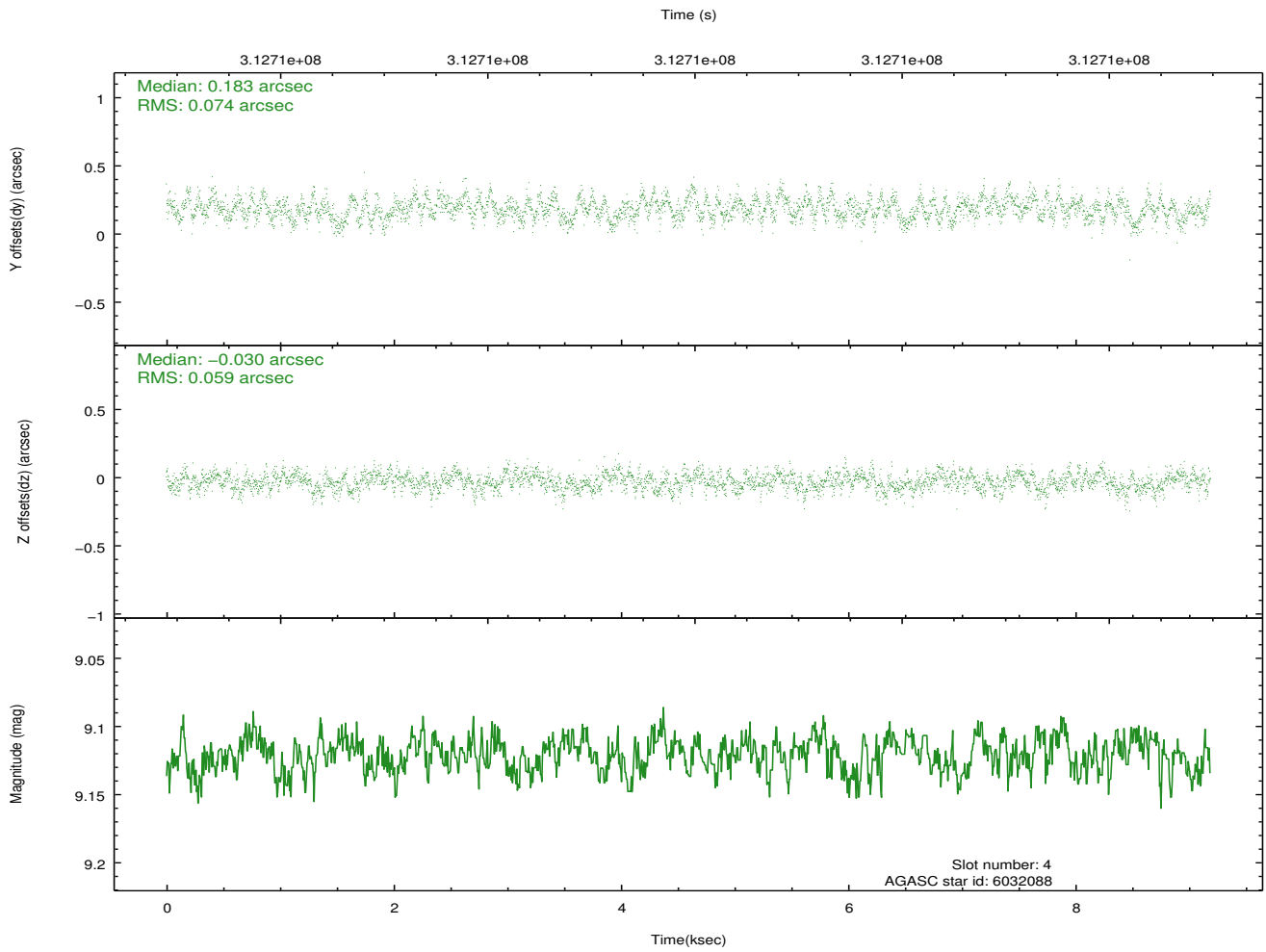
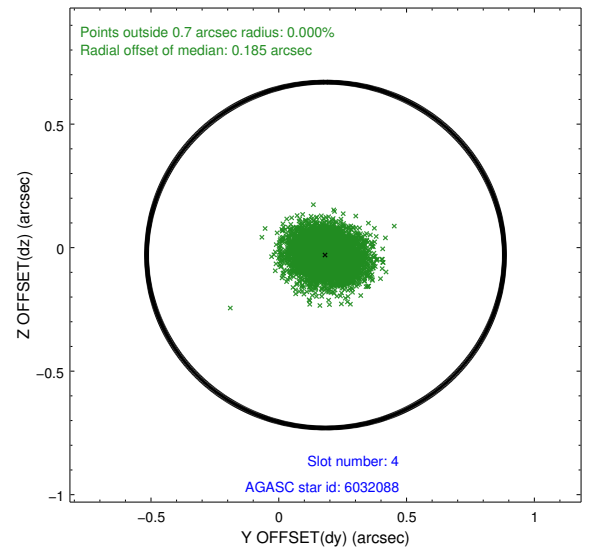
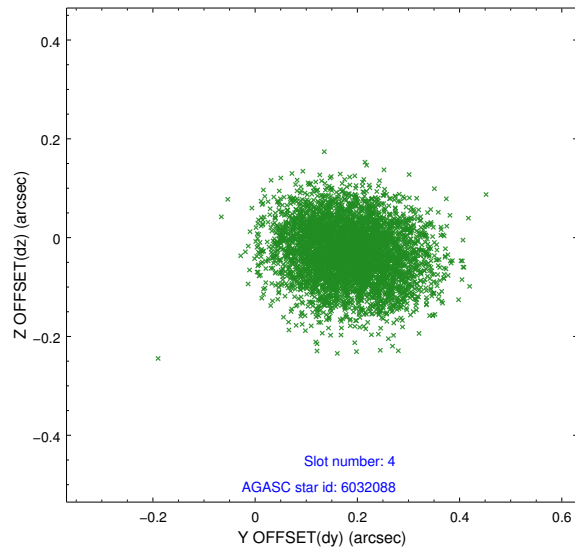
slot	status	id	mag	n_pts	med_dy	med_dz	dr1	dr2	ra	dec	mean_y	mean_z
0	FID	ACIS-I-1	7.24	2242	0.032	-0.001	0.008	0.018	0.000000	0.000000	925.28	-838.13
1	FID	ACIS-I-5	7.23	2241	-0.228	0.033	0.007	0.015	0.000000	0.000000	-1822.77	1059.07
2	FID	ACIS-I-6	7.24	2242	0.104	0.039	0.008	0.014	0.000000	0.000000	390.24	1704.27
3	GUIDE	5116480	9.29	4481	-0.151	0.074	0.133	0.204	36.624607	0.603451	-1398.09	-2332.16
4	GUIDE	6032088	9.12	4483	0.183	-0.030	0.101	0.161	37.532714	0.102881	2060.39	-928.18
5	GUIDE	6034024	9.69	4476	0.005	-0.106	0.111	0.186	37.505848	1.160303	-957.47	1393.83
6	GUIDE	6042384	6.42	4483	0.011	0.111	0.078	0.130	37.688348	0.255749	1985.46	-145.95
7	GUIDE	6033288	9.00	4476	-0.044	-0.049	0.093	0.152	37.919400	0.743225	1146.10	1605.21

2.4 Star Slots

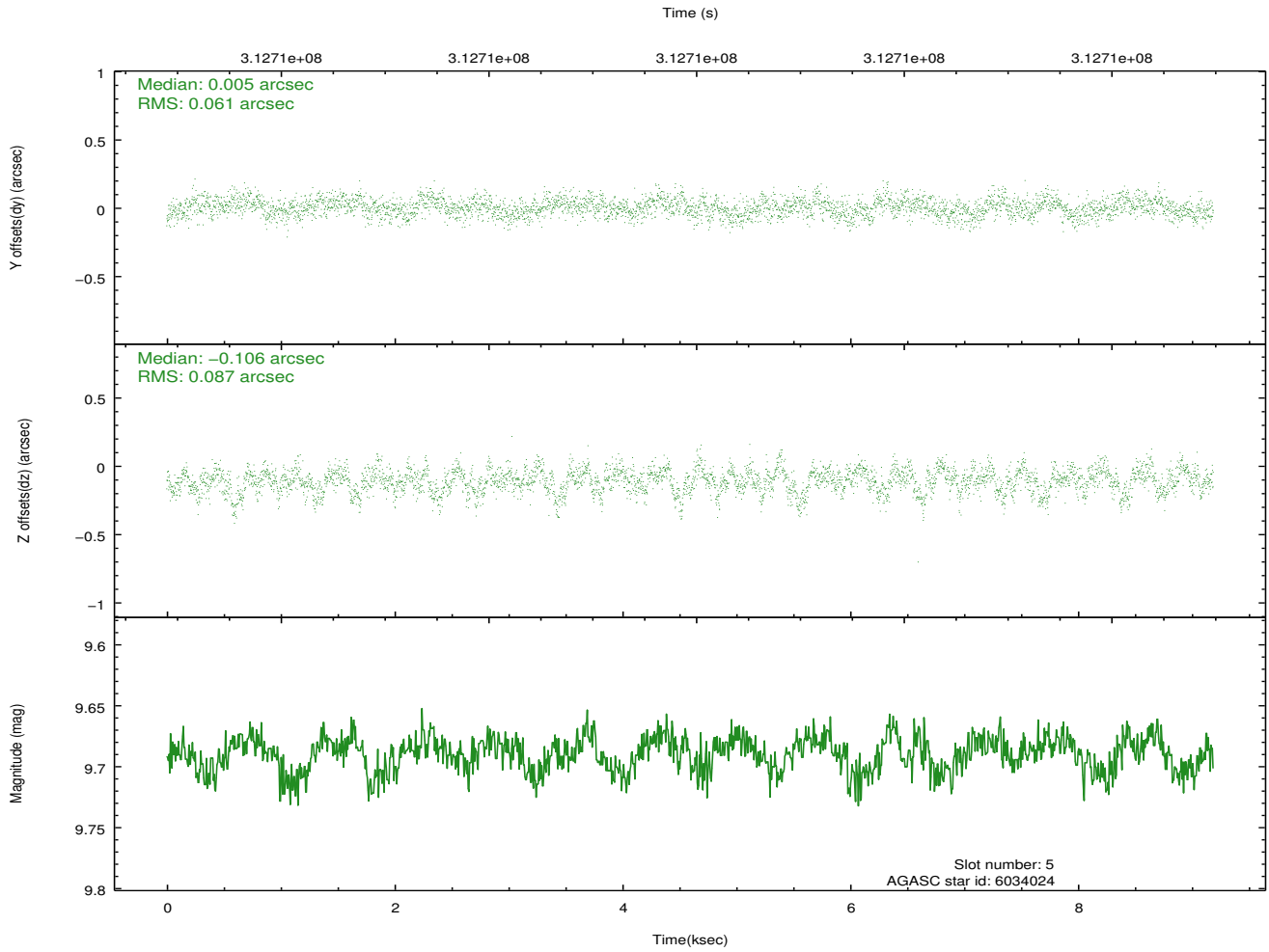
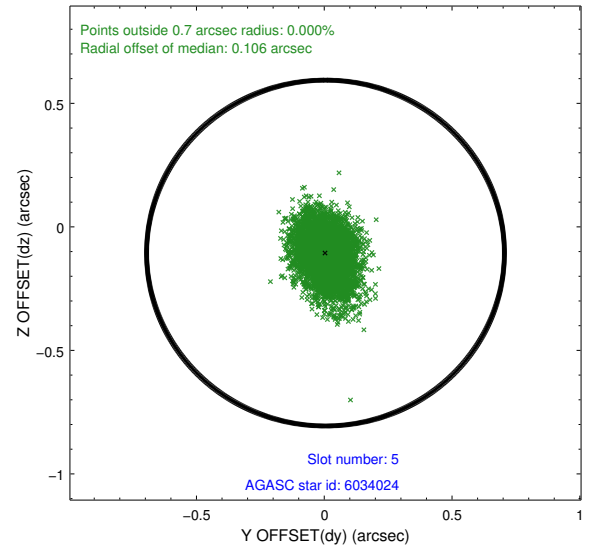
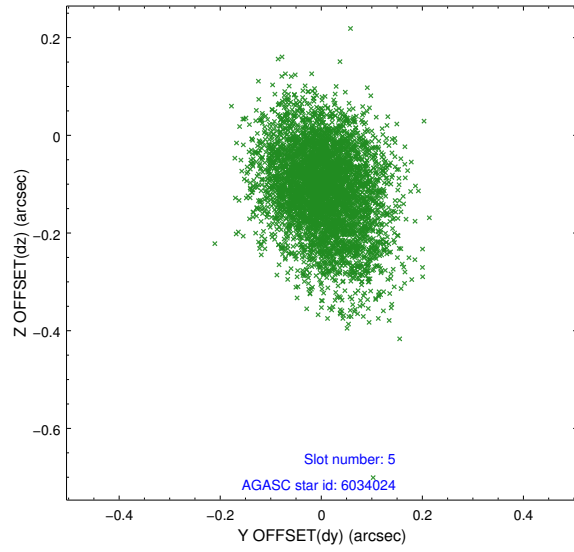
2.4.1 Slot 3



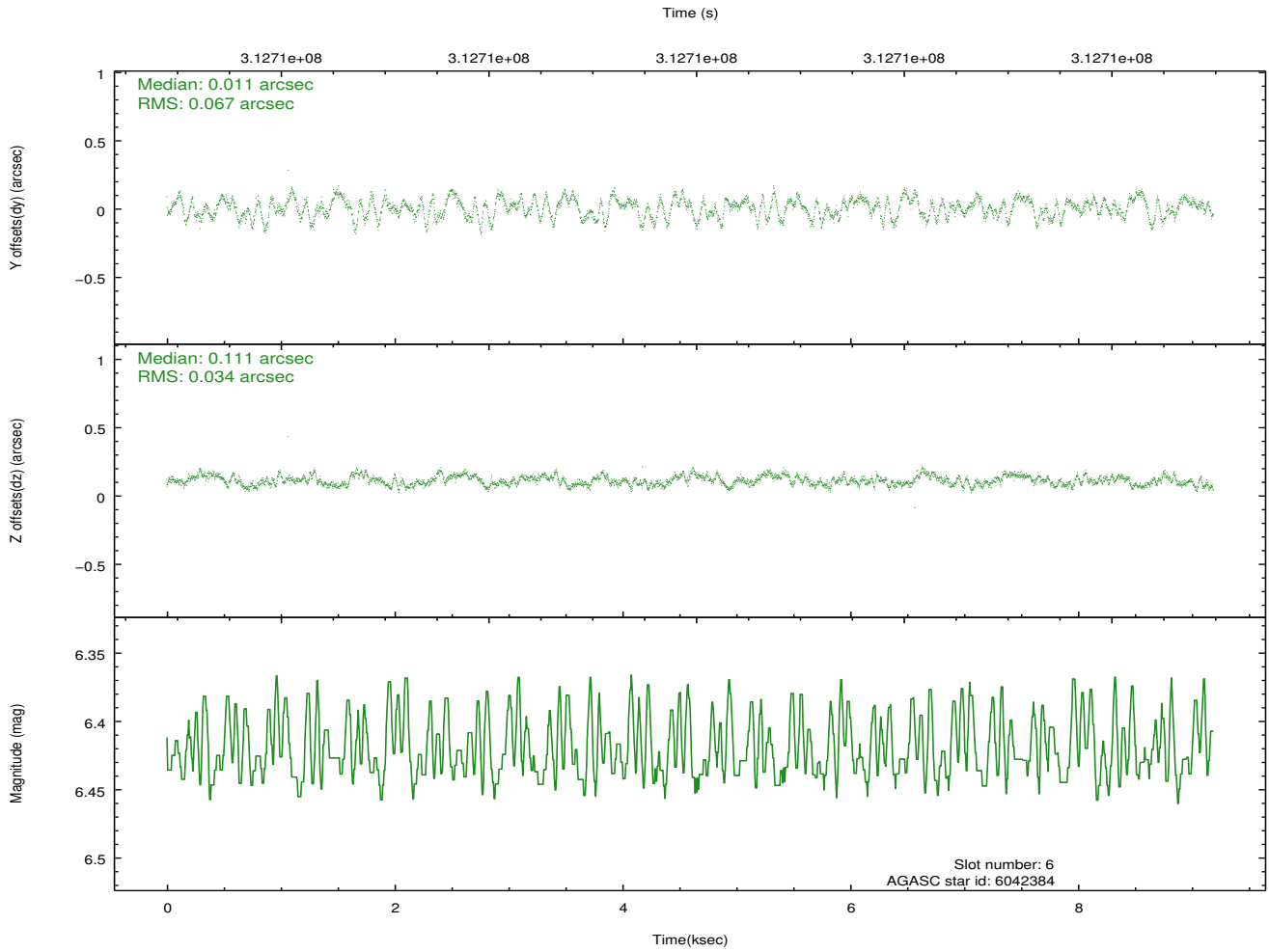
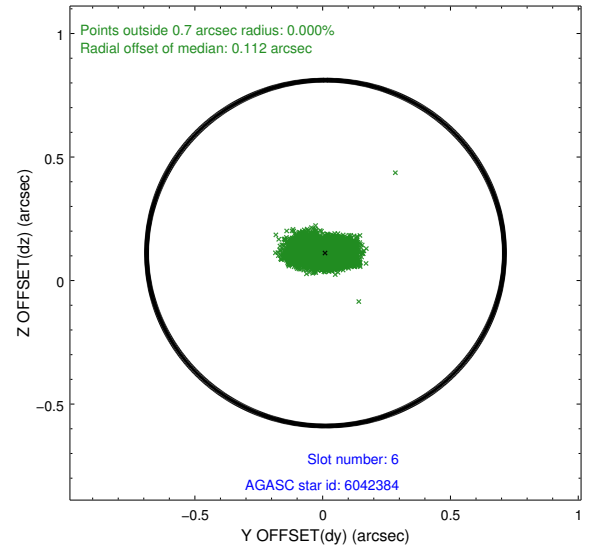
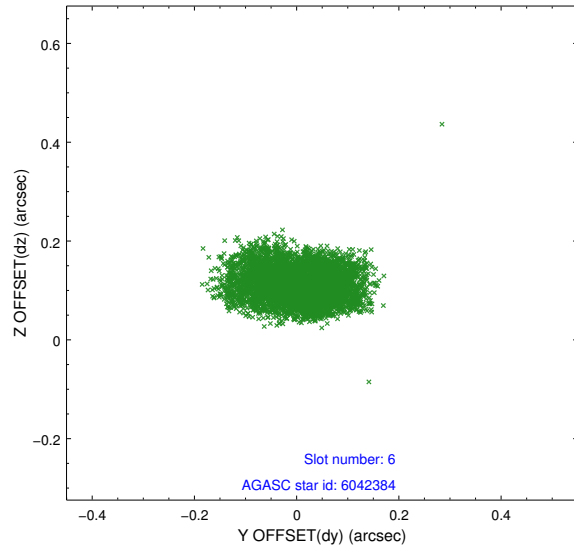
2.4.2 Slot 4



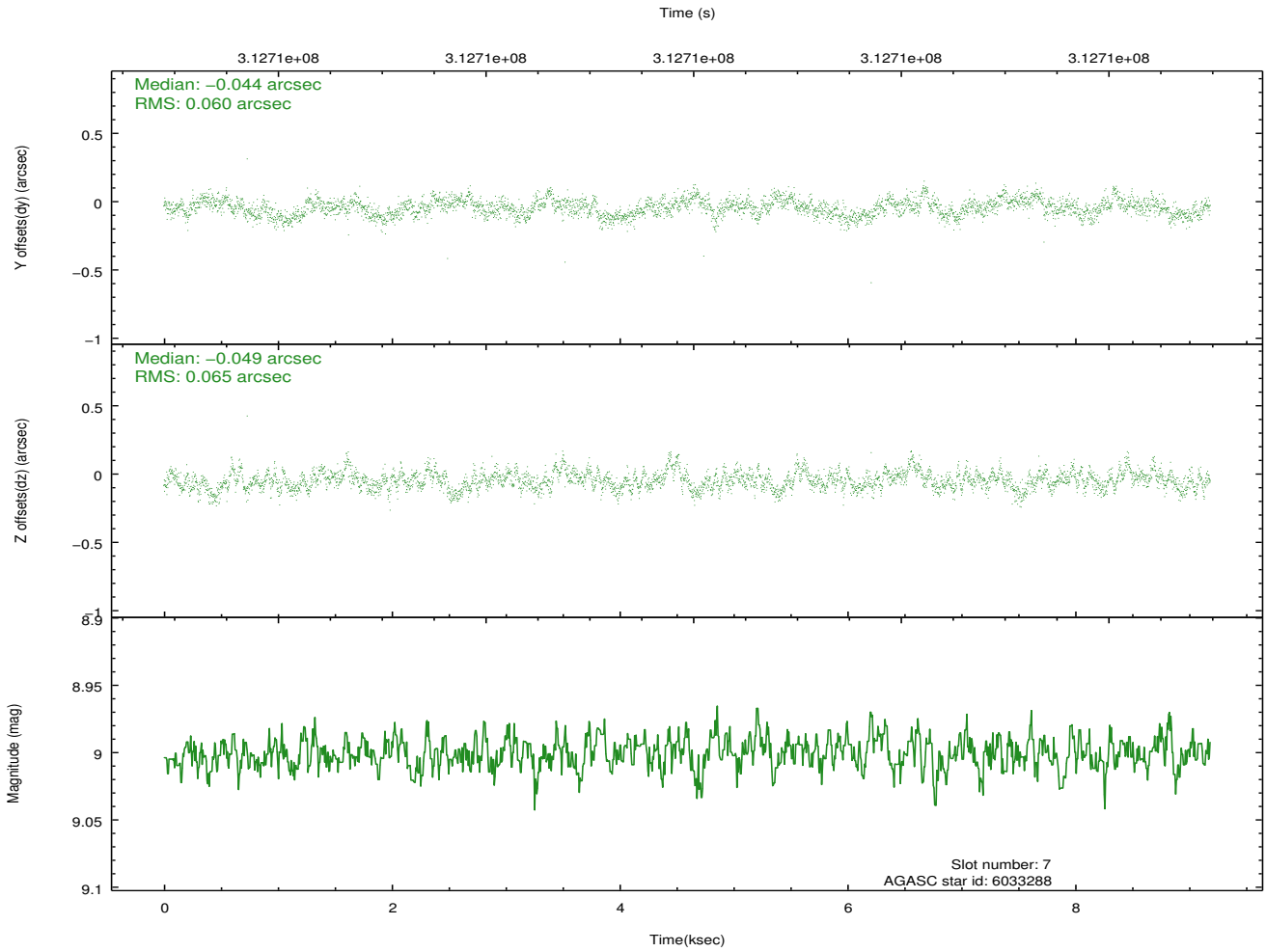
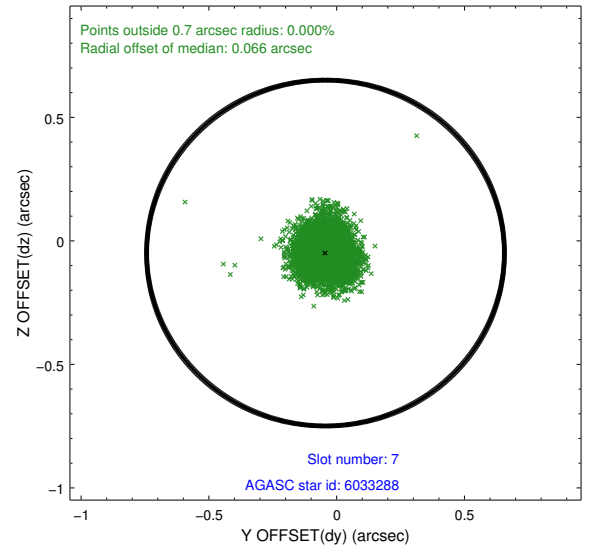
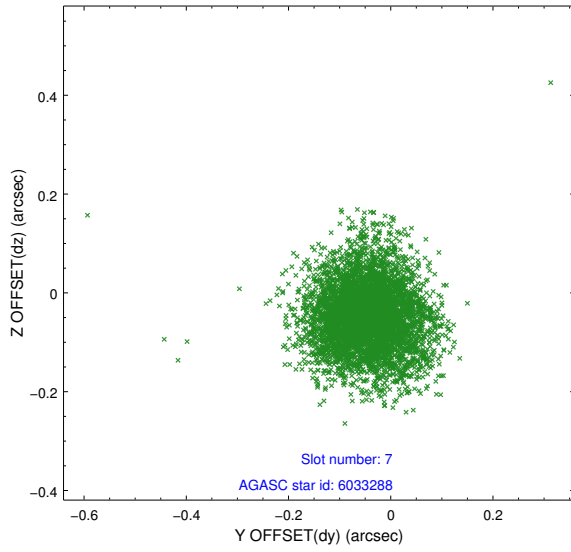
2.4.3 Slot 5



2.4.4 Slot 6

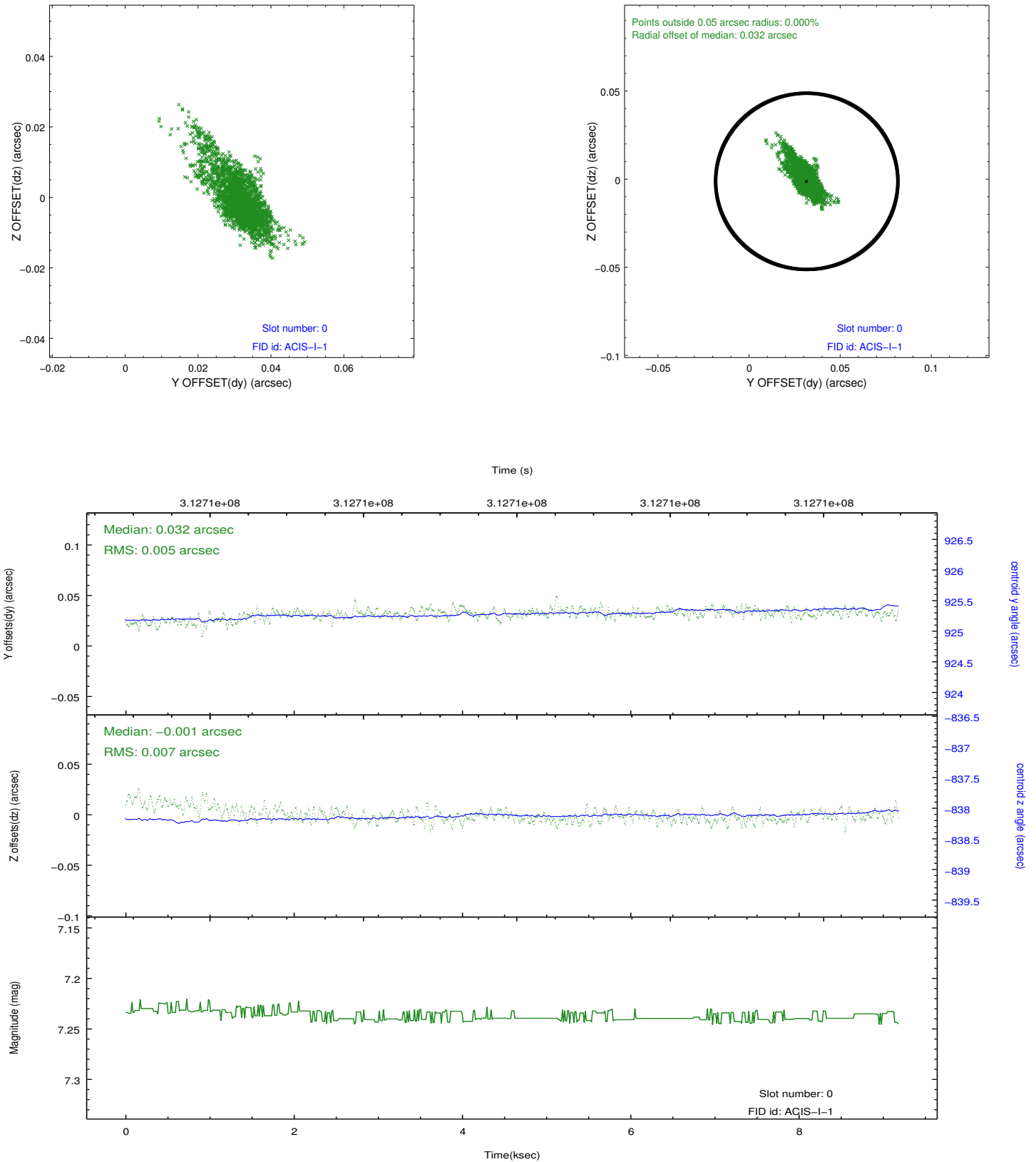


2.4.5 Slot 7

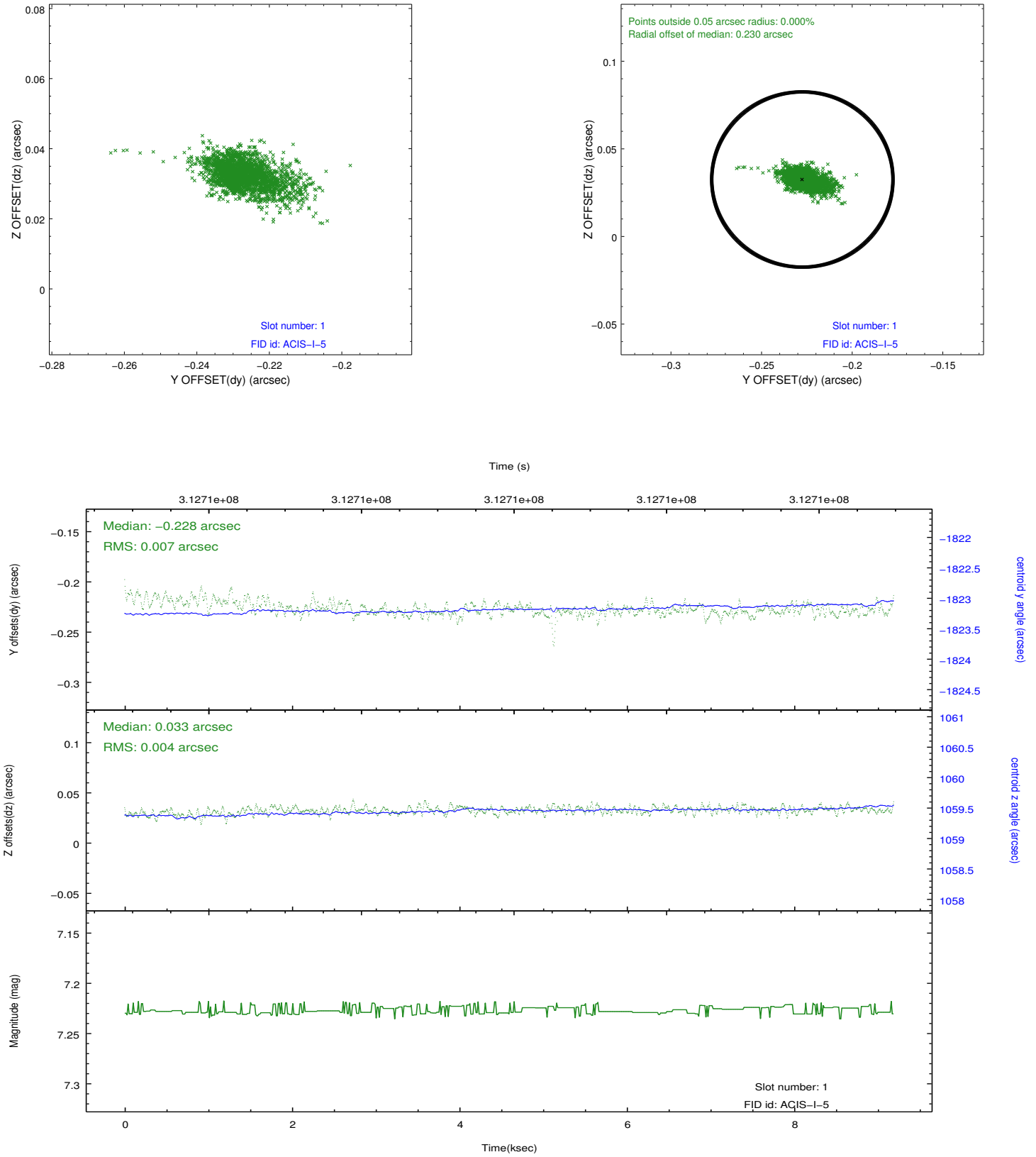


2.5 FID Slots

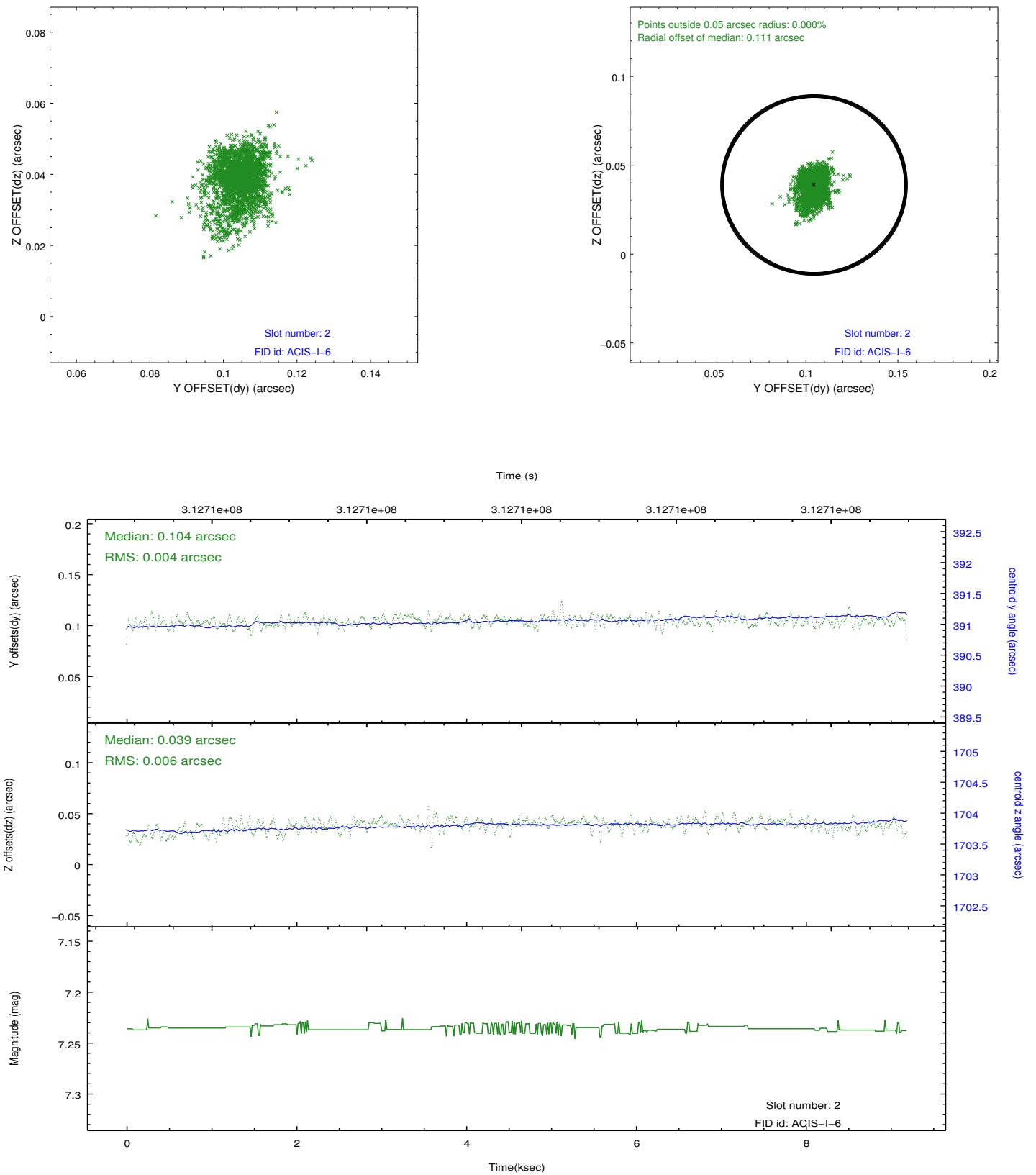
2.5.1 Slot 0



2.5.2 Slot 1



2.5.3 Slot 2



A Summary

A.1 Status

V&V Scientist	Jen Lauer
V&V Date (YYYY-MM-DD)	2012.05.07
V&V Edition	1
V&V Disposition and Status	OK
V&V Charge Time	8.77920006

A.2 Comments