

V&V Reference Report

L2 ASCDS Version : 8.1.2

Observation 843 - L2 Version 4

Chandra X-Ray Center

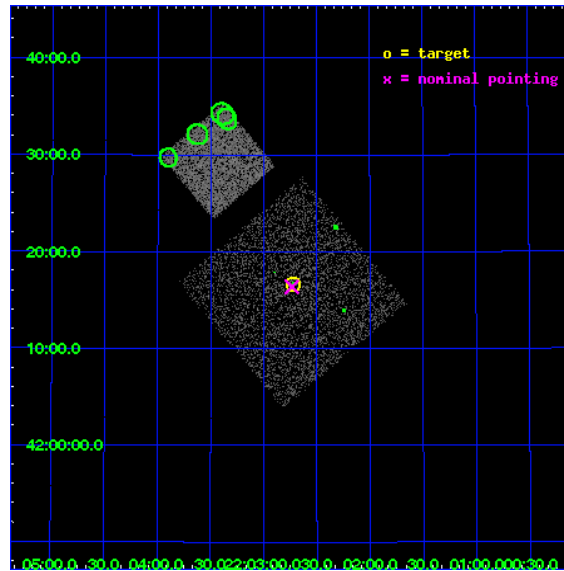
L2 Processing Date : Dec 2 2009

Contents

1	Front	2
2	OBI	3
2.1	OBI	3
2.1.1	Images	3
2.1.2	Bias	3
2.1.3	Parameters	4
2.1.4	Events	4
2.2	Compared Parameters	5
2.3	Aspect	6
2.4	Star Slots	9
2.4.1	Slot 3	9
2.4.2	Slot 4	10
2.4.3	Slot 5	11
2.4.4	Slot 6	12
2.4.5	Slot 7	13
2.5	FID Slots	14
2.5.1	Slot 0	14
2.5.2	Slot 1	15
2.5.3	Slot 2	16
3	Point Sources	17
A	Summary	18
A.1	Status	18
A.2	Comments	18

1 Front

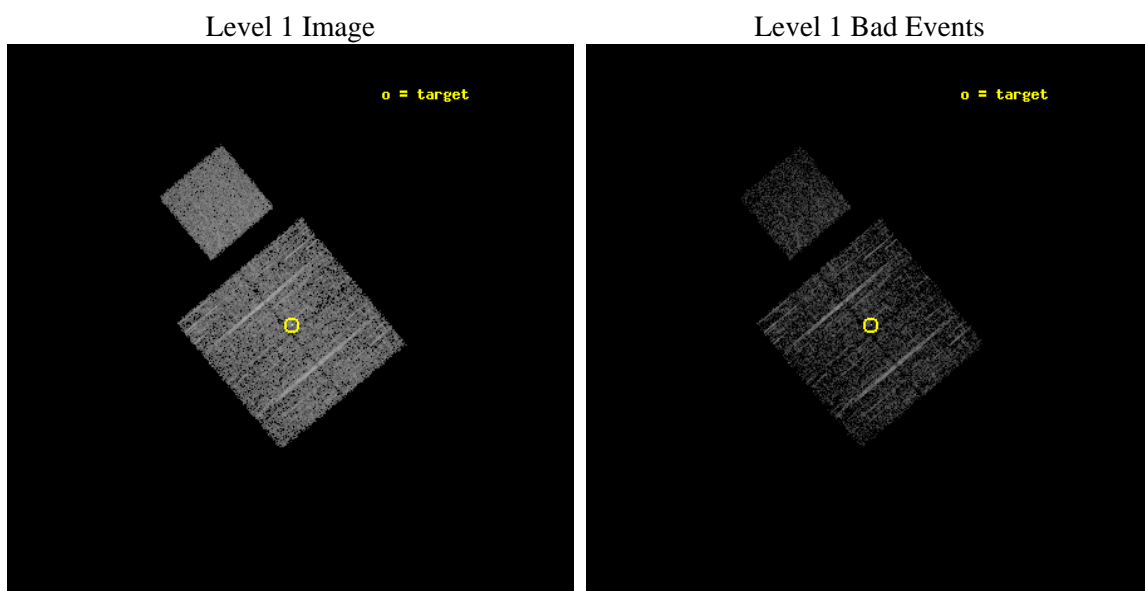
seq_num	700148	Sequence number
obs_id	843	Observation id
title	THE X-RAY CLUSTER ENVIRONMENT OF BLAZARS	Proposal title
observer	Dr. Joseph Pesce	Principal investigator
object	BL LACERTAE	Source name
dtcycle	0	
cycle	P	events from which exps? Prim/Second/Both
ra_targ	330.680417	Observer's specified target RA
dec_targ	42.277722	Observer's specified target Dec
ra_nom	330.68380691575	Nominal RA
dec_nom	42.273001488743	Nominal Dec
roll_nom	319.98151668726	Nominal Roll
revision	4	Processing version of data
ontime	2143.1253301799	Sum of GTIs [s]
livetime	2115.987786814	Livetime [s]
ontime0	2143.2484501749	Sum of GTIs [s]
ontime1	2143.2074101791	Sum of GTIs [s]
ontime2	2143.1663701758	Sum of GTIs [s]
ontime3	2143.1253301799	Sum of GTIs [s]
ontime7	2143.2894901782	Sum of GTIs [s]
l2events	13702	Number of level 2 events



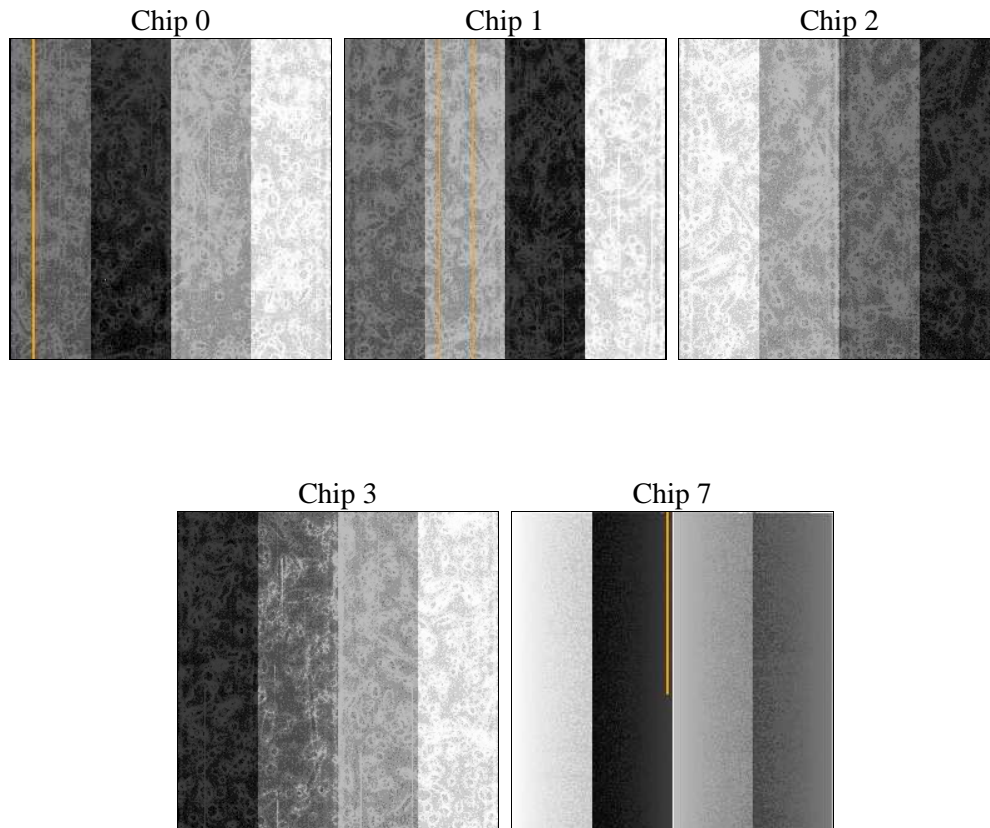
2 OBI

2.1 OBI

2.1.1 Images



2.1.2 Bias



2.1.3 Parameters

obi_num	0	Obi number	sched_exp_time	3000.000000	Scheduled observation exposure time
ascdsver	8.1.2	ASCDS version number	ontime	2143.1253301799	Sum of GTIs [s]
caldsver	4.1.4	 	ontime0	2143.2484501749	Sum of GTIs [s]
date	2009-12-02T06:20:09	Date and time of file creation	ontime1	2143.2074101791	Sum of GTIs [s]
revision	3	Processing version of data	ontime2	2143.1663701758	Sum of GTIs [s]
			ontime3	2143.1253301799	Sum of GTIs [s]
			ontime7	2143.2894901782	Sum of GTIs [s]
			l1events	87292	Number of level 1 events

2.1.4 Events

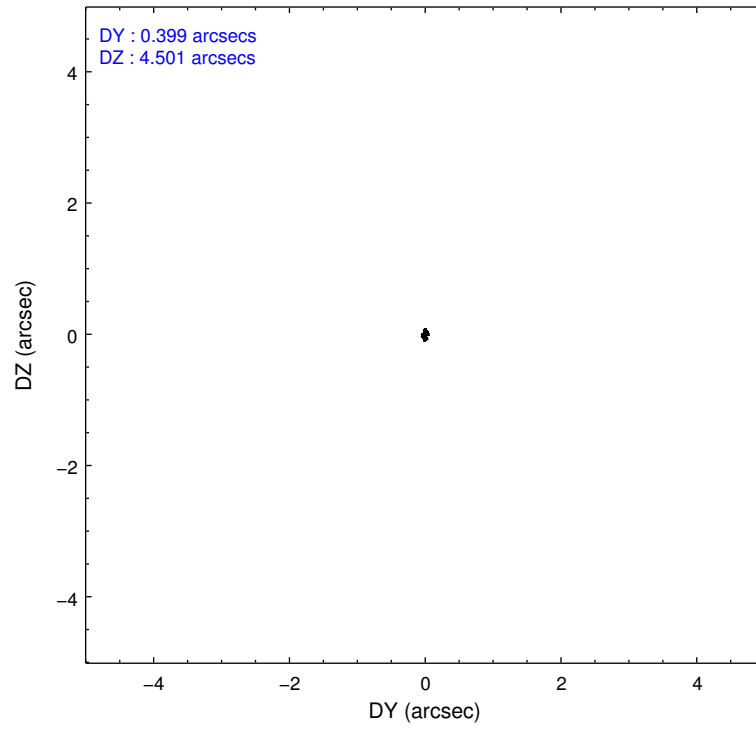
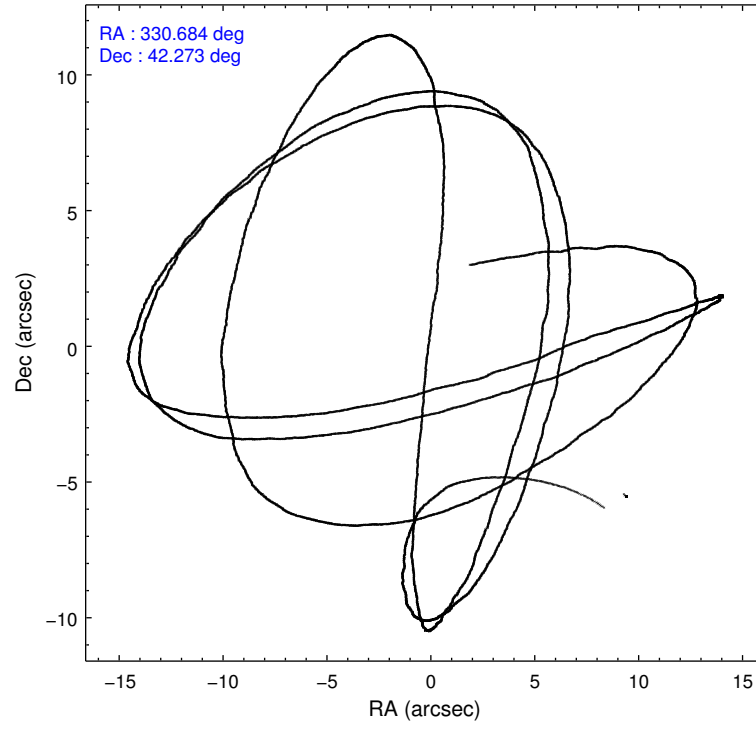
	ccd 0	ccd 1	ccd 2	ccd 3	ccd 7
level 1 events	15925	16449	17747	18093	19078
rejected events	14195	14630	16134	15915	11856
rejected %	89%	88%	90%	87%	62%

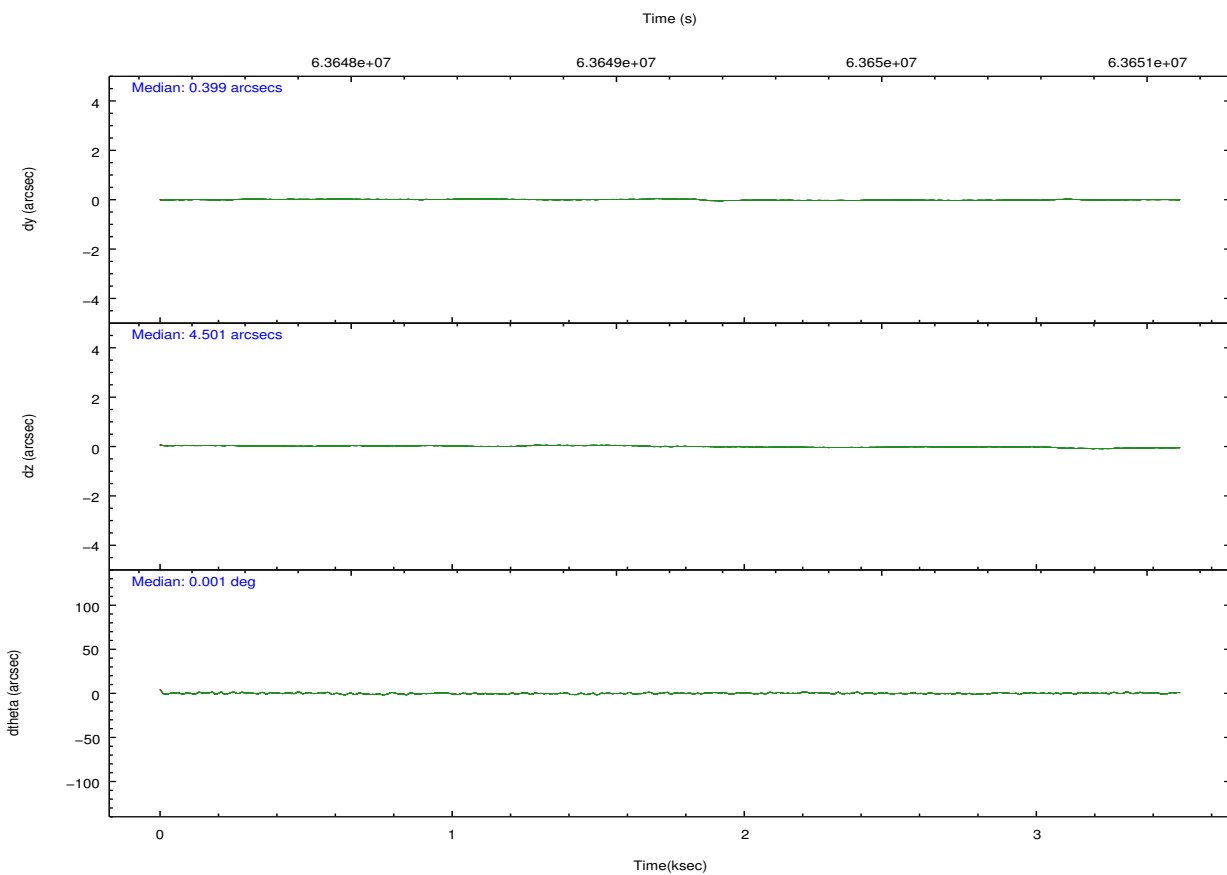
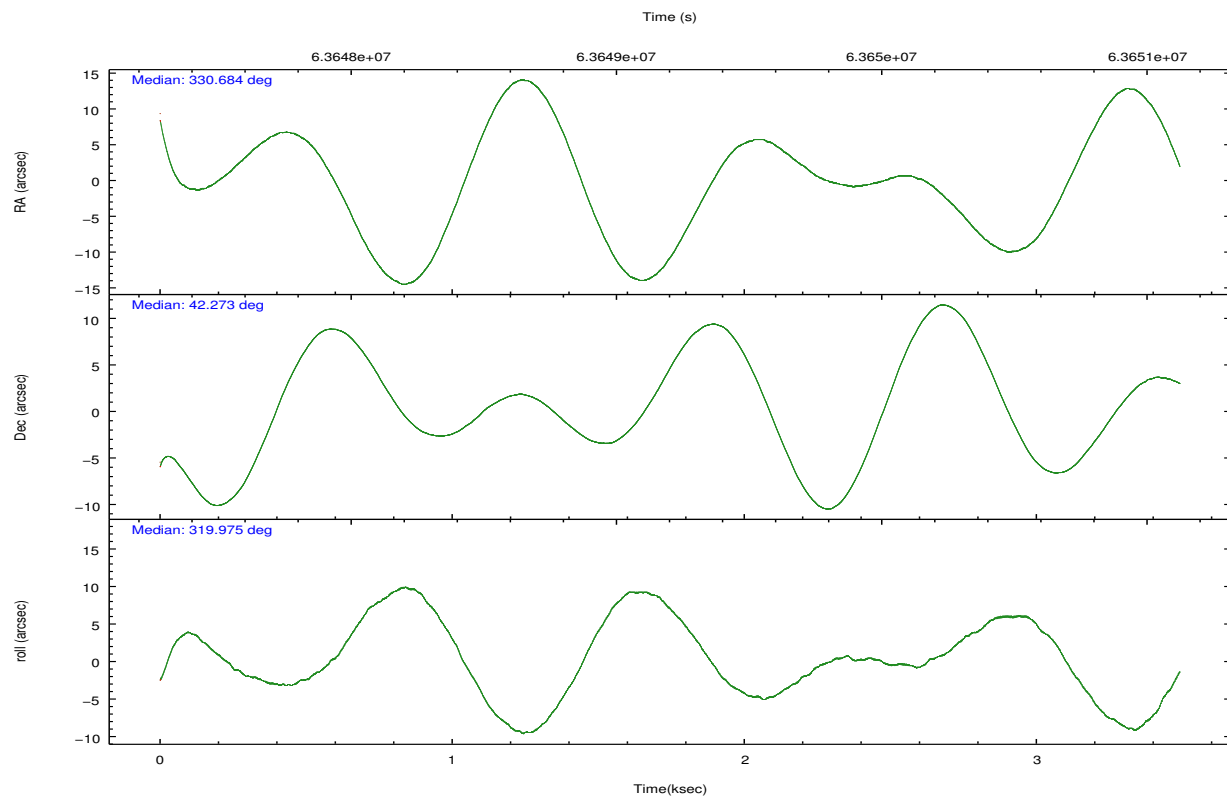
	ccd 0	ccd 1	ccd 2	ccd 3	ccd 7
grade 0 events	430	422	353	477	405
	2%	2%	1%	2%	2%
grade 1 events	1	2	1	18	20
	0%	0%	0%	0%	0%
grade 2 events	660	653	661	933	1506
	4%	3%	3%	5%	7%
grade 3 events	158	141	101	119	430
	0%	0%	0%	0%	2%
grade 4 events	126	126	111	108	401
	0%	0%	0%	0%	2%
grade 5 events	351	348	337	396	1164
	2%	2%	1%	2%	6%
grade 6 events	359	483	391	551	4496
	2%	2%	2%	3%	23%
grade 7 events	13840	14274	15792	15491	10656
	86%	86%	88%	85%	55%

2.2 Compared Parameters

Parameter	Planned	Actual	Parameter	Planned	Actual
Instrument	ACIS	ACIS	Obspar format version number	6	6
Detector	ACIS-01237	ACIS-01237	Obspar file type	PREDICTED	ACTUAL
Grating	NONE	NONE	Obspar update status	NONE	UPDATED
Data mode	VFAINT	VFAINT	Number of optional ACIS chips dropped	0	0
Observation mode	POINTING	POINTING	On-chip summing requested	N	N
Pointing RA	330.646786	330.6838069157467	Subarray requested	NONE	NONE
Pointing Dec	42.278248	42.27300148874271	Alternating exposures requested	N	N
Pointing Roll	319.797752	319.9815166872589	Primary exposure time	0.000000	3.2
SIM focus pos (mm)	-0.782348	-0.7809083437167272			
SIM defocus (mm)	0	0.001439871863259334			
SIM translation stage pos (mm)	-233.592463	-233.5874344608287			
SIM translation stage offset (mm)	0	-0.005018542100998502			
Observation start time	63647948.184000	63646775.393732			
Observation start date	2000-01-07T15:58:04	2000-01-07T15:39:35			
Observation end time	63650948.184000	63651680.53141			
Observation end date	2000-01-07T16:48:04	2000-01-07T17:01:20			
Read mode	TIMED	TIMED			

2.3 Aspect



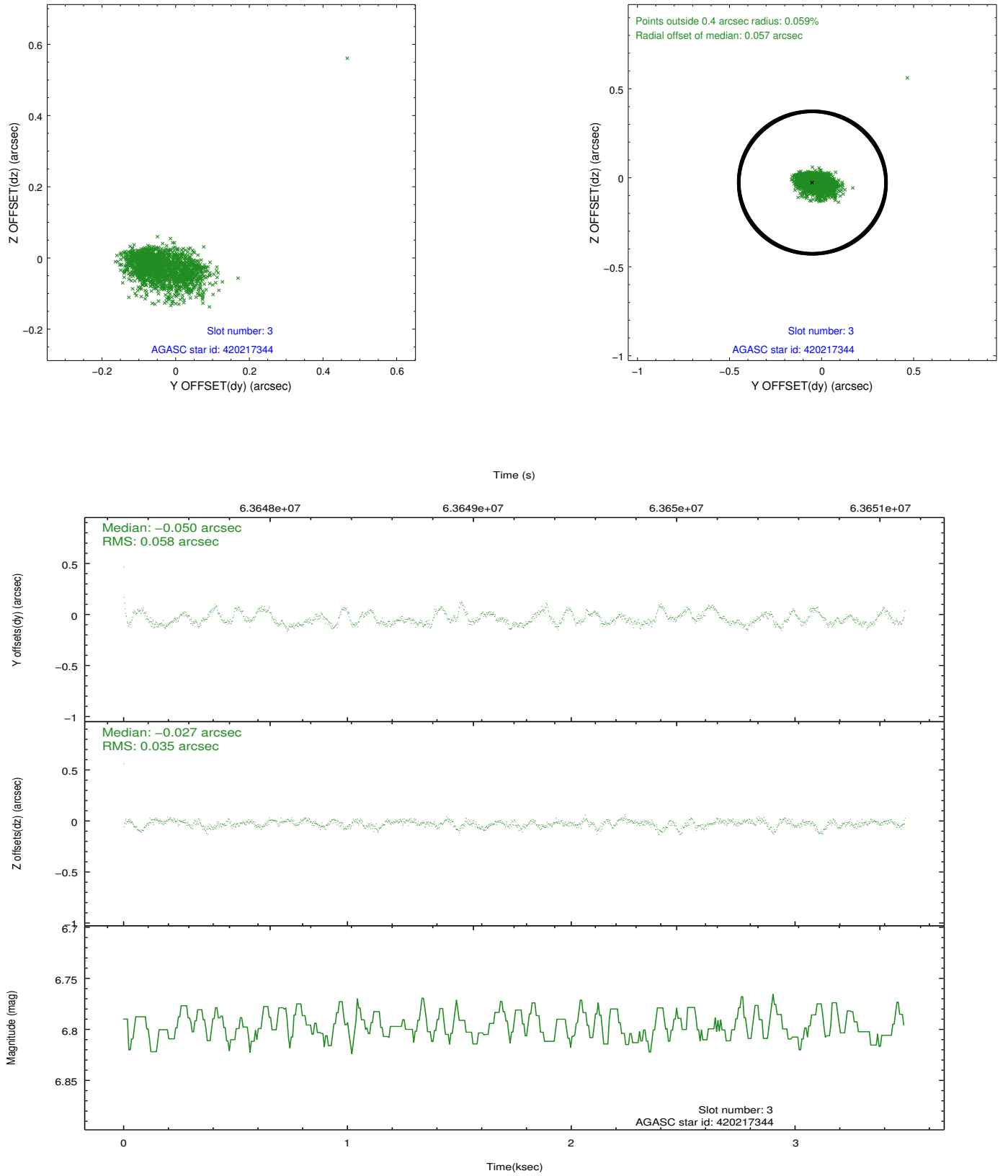


Slot Statistics

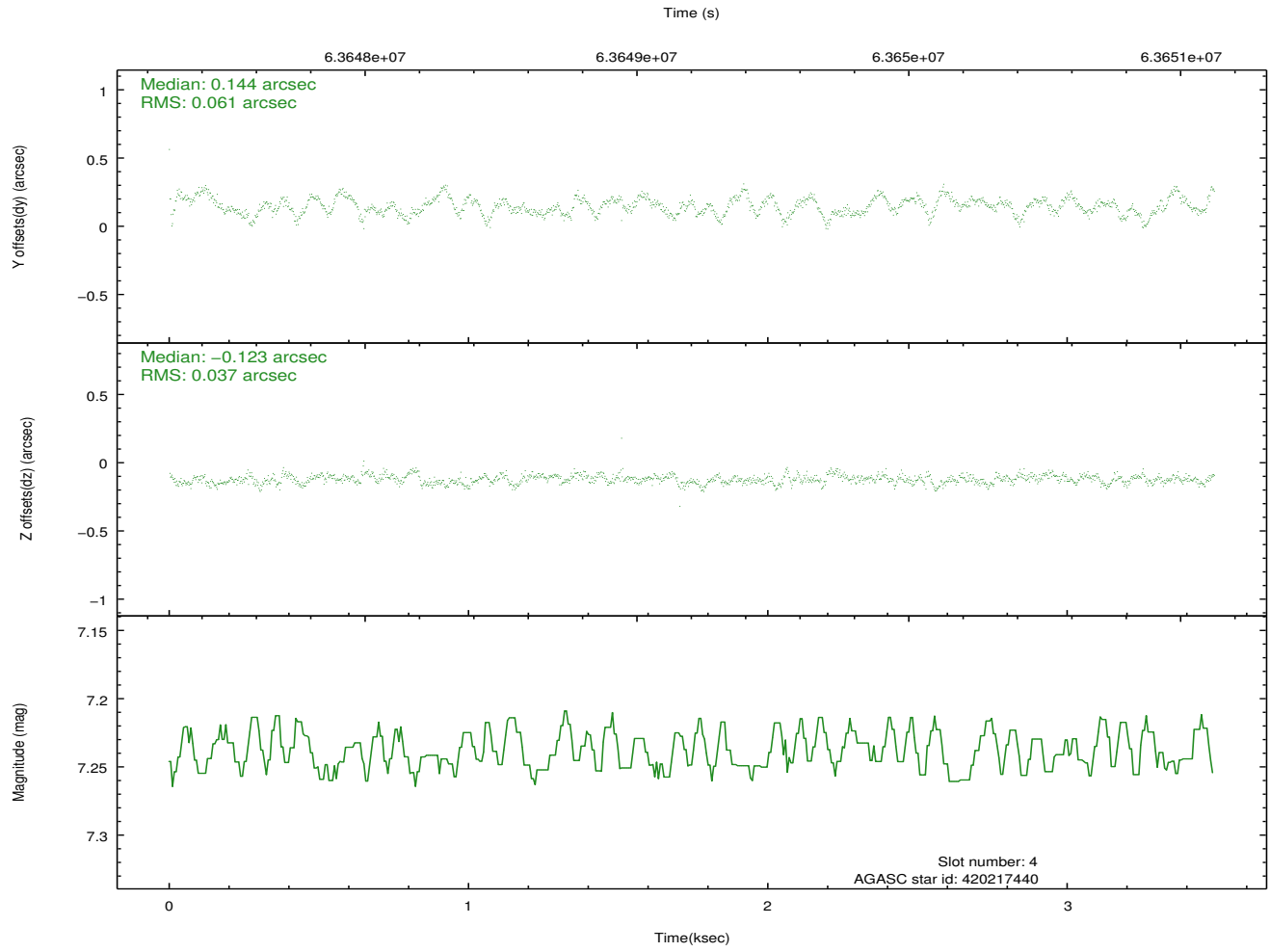
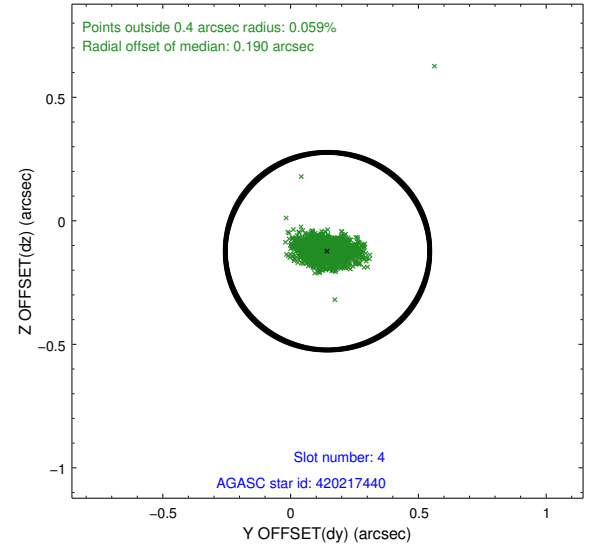
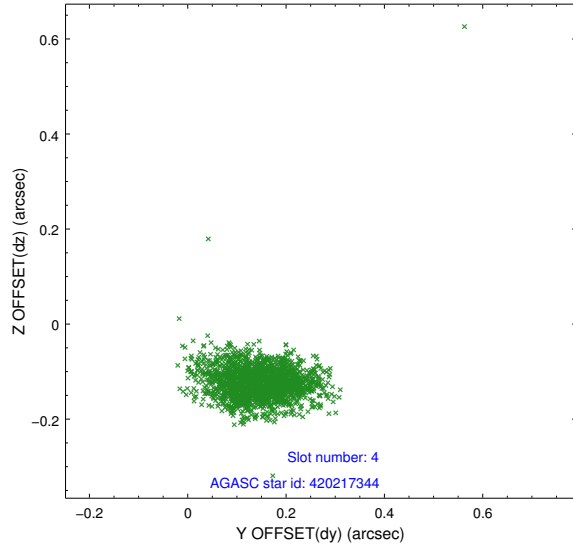
slot	status	id	mag	n_pts	med_dy	med_dz	dr1	dr2	ra	dec	mean_y	mean_z
0	FID	ACIS-I-3	7.45	1704	0.060	0.269	0.008	0.013	0.000000	0.000000	56.89	-960.79
1	FID	ACIS-I-4	7.24	1704	-0.015	-0.140	0.007	0.011	0.000000	0.000000	2159.50	1071.24
2	FID	ACIS-I-5	7.23	1704	-0.144	-0.059	0.007	0.013	0.000000	0.000000	-1807.55	1070.41
3	GUIDE	420217344	6.80	1704	-0.050	-0.027	0.068	0.115	330.429147	41.539149	1269.15	-2409.94
4	GUIDE	420217440	7.24	1704	0.144	-0.123	0.071	0.126	330.796331	41.406008	2336.06	-2138.56
5	GUIDE	420222488	9.76	1703	0.026	0.081	0.104	0.171	331.272034	42.412006	955.55	1444.27
6	GUIDE	420756504	9.27	1704	-0.081	0.067	0.111	0.178	330.504378	43.132603	-2271.32	2108.78
7	GUIDE	420220264	9.86	1703	-0.036	-0.001	0.105	0.170	330.262493	42.880258	-2176.41	1003.86

2.4 Star Slots

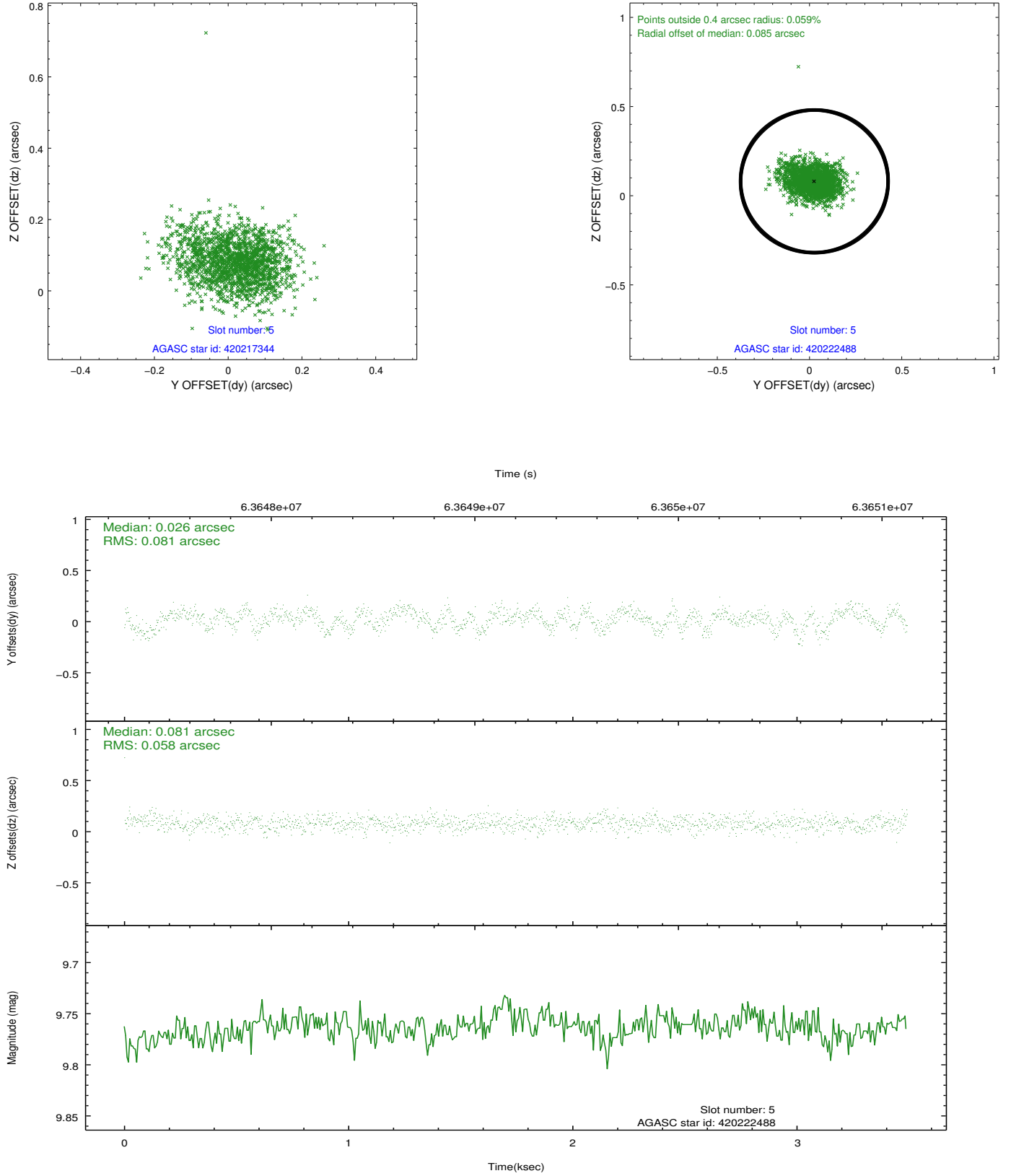
2.4.1 Slot 3



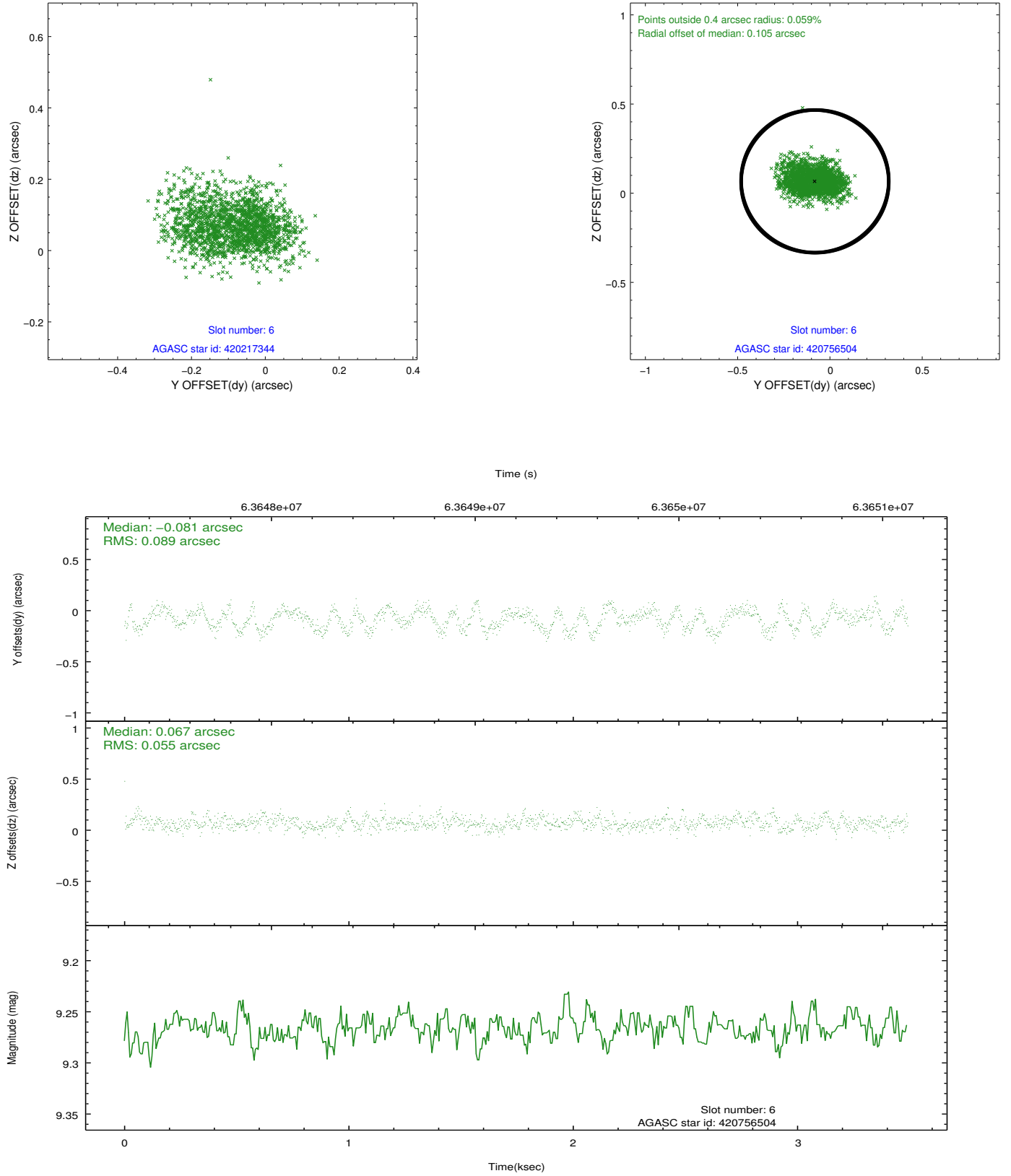
2.4.2 Slot 4



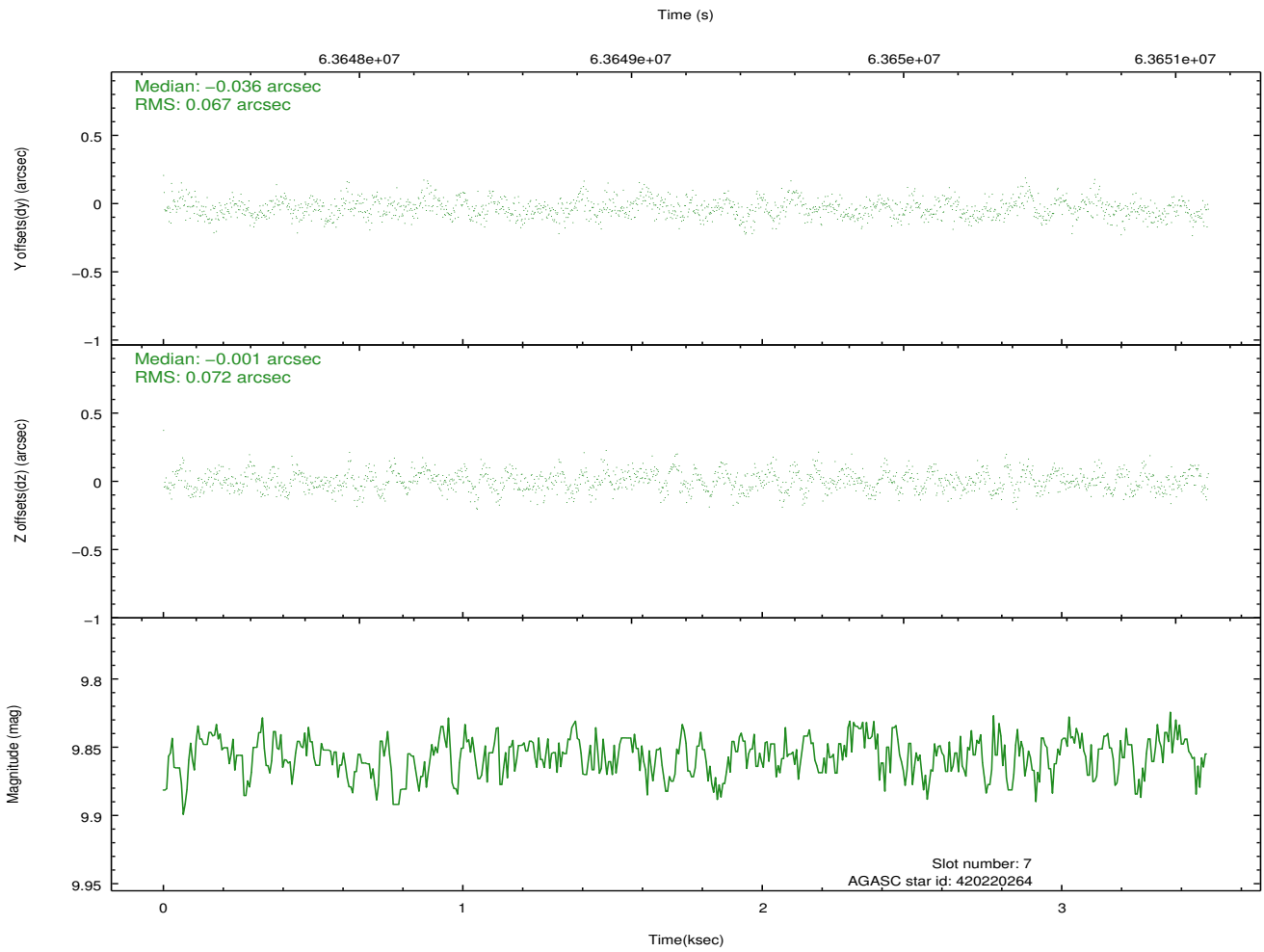
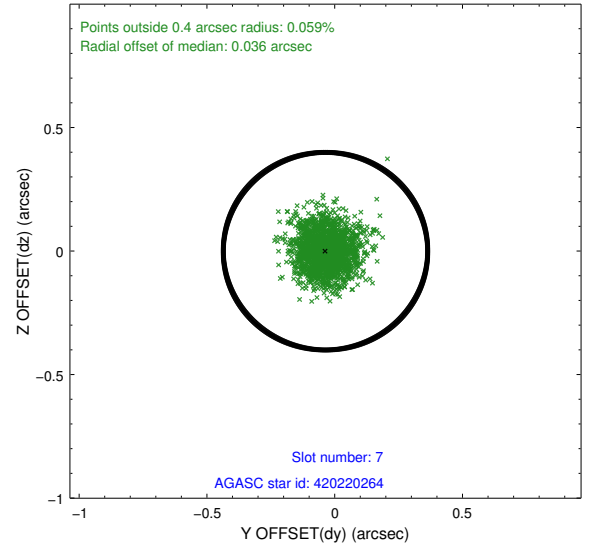
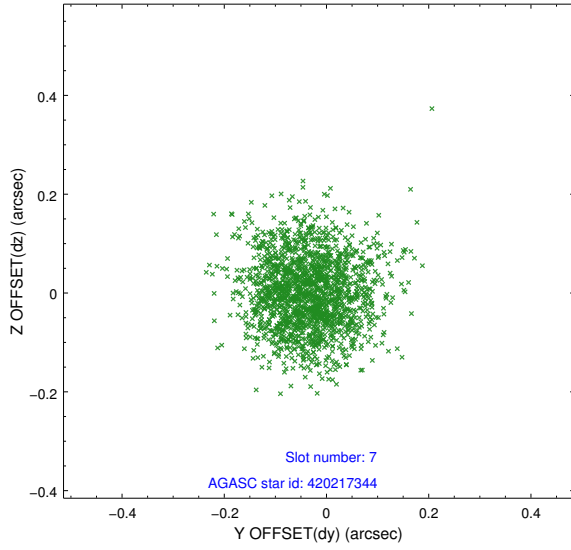
2.4.3 Slot 5



2.4.4 Slot 6

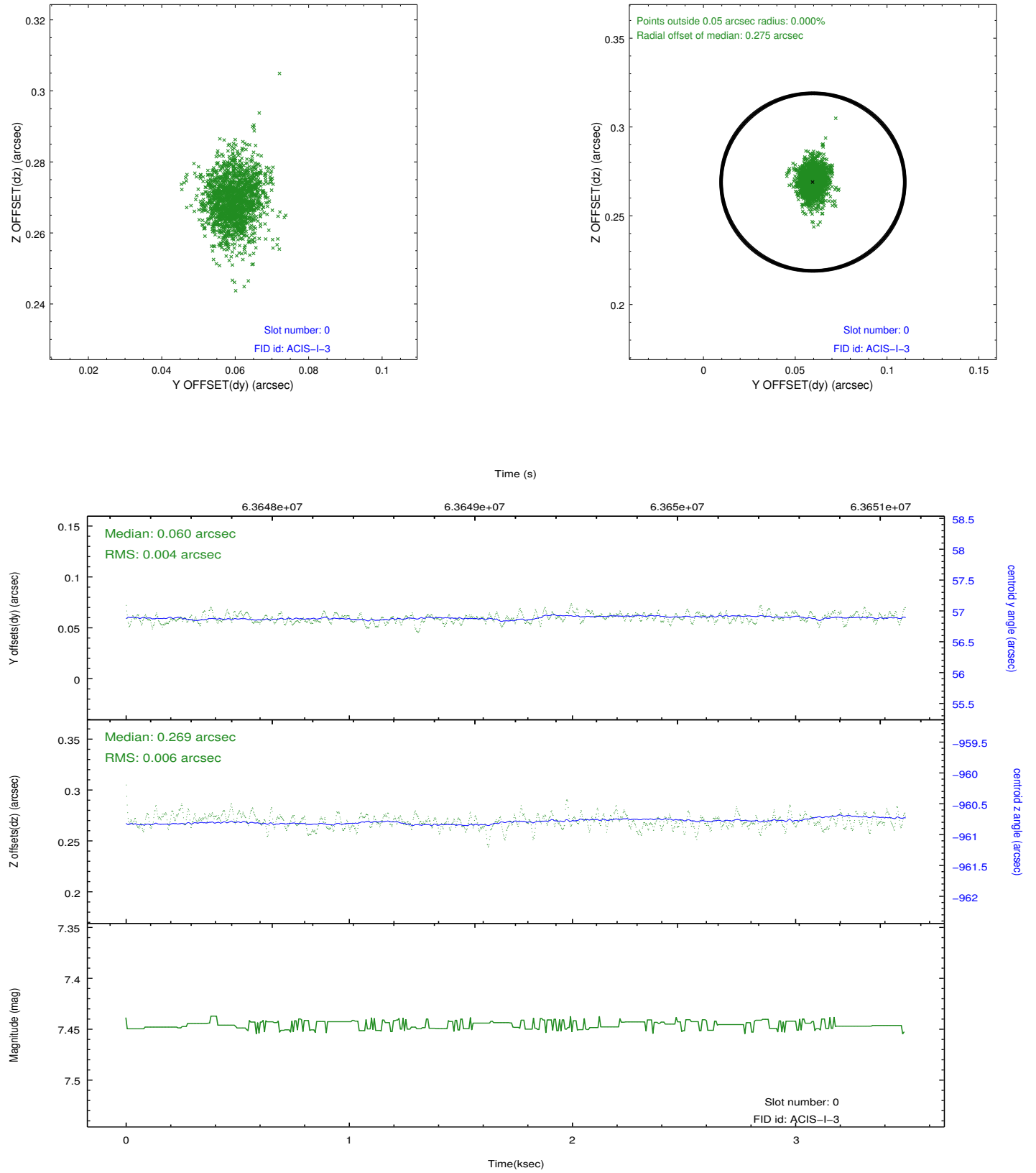


2.4.5 Slot 7

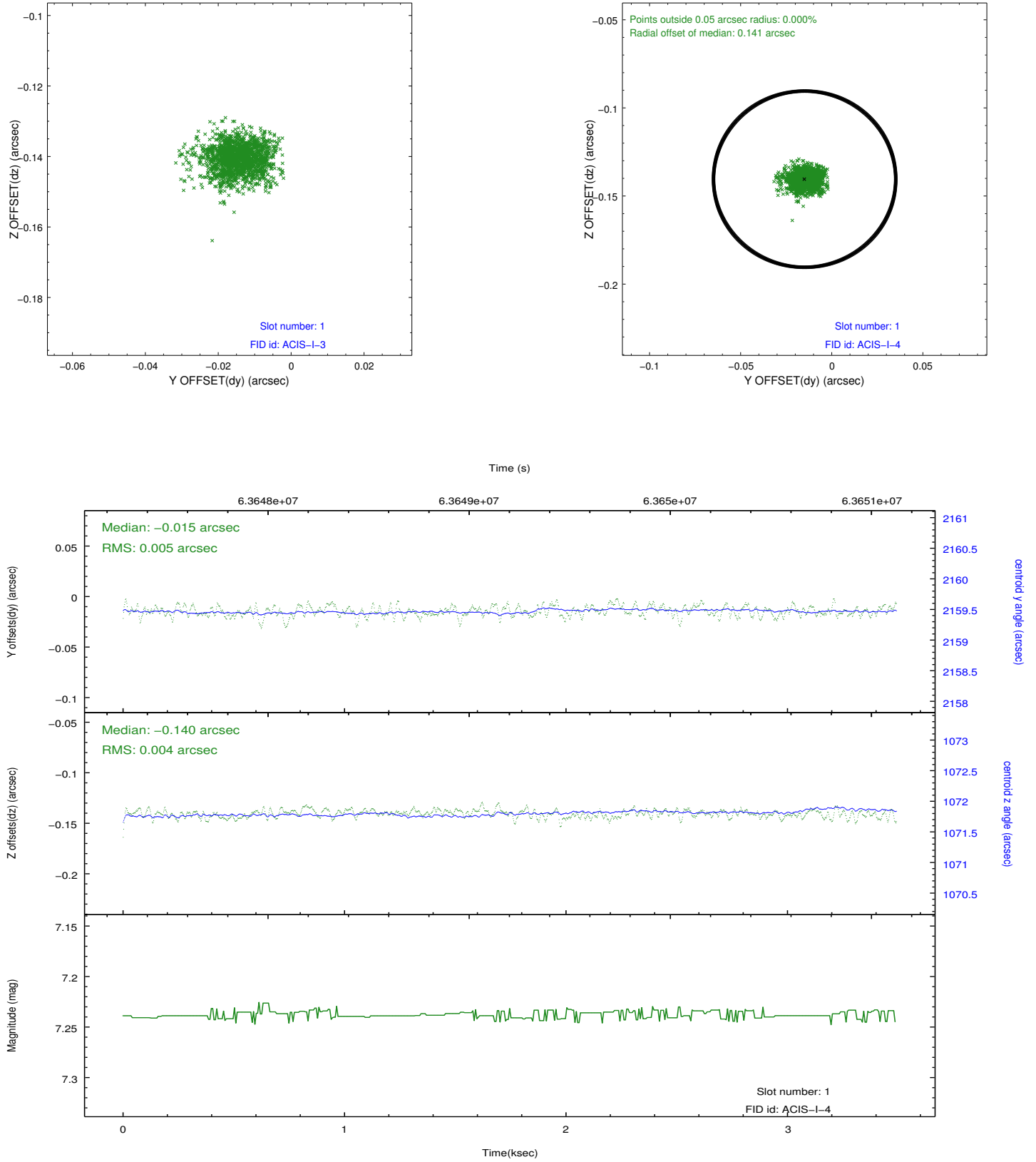


2.5 FID Slots

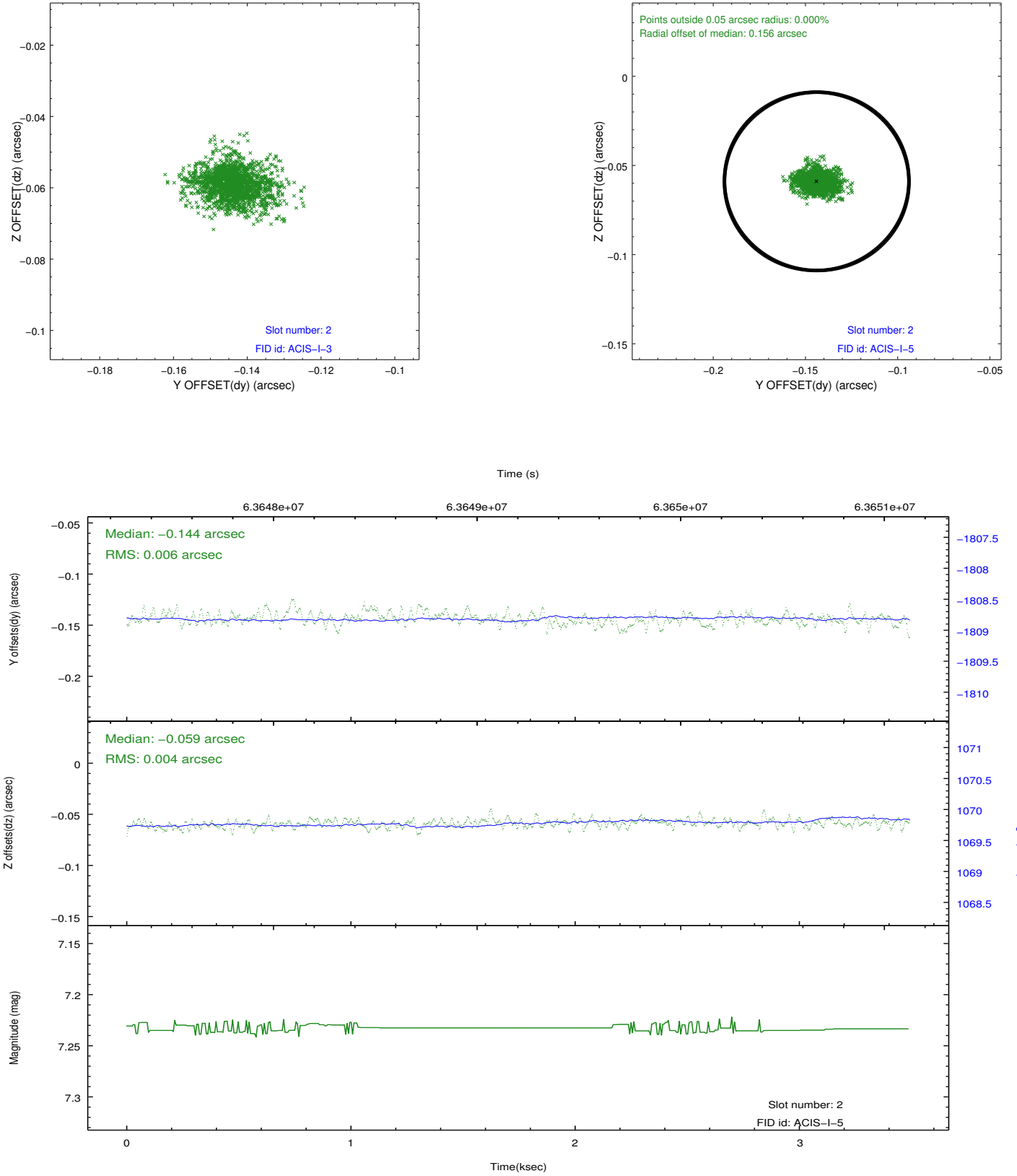
2.5.1 Slot 0



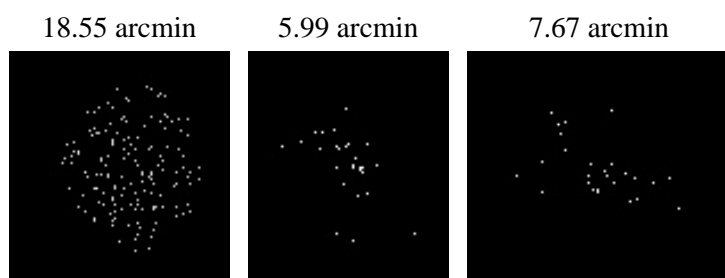
2.5.2 Slot 1



2.5.3 Slot 2



3 Point Sources



A Summary

A.1 Status

V&V Scientist	Joy Nichols
V&V Date (YYYY-MM-DD)	2010.01.27
V&V Edition	1
V&V Disposition and Status	OK
V&V Charge Time	2.144

A.2 Comments

Slot 0 is bad.

==

The focal plane temperature is approximately -110C during this observation. This reprocessing of the data applies no CTI correction because none is available for this temperature at present.

The ACIS CTI correction has not been calibrated at this temperature, because it was early in the mission, and ACIS had not yet been lowered to the standard -119.7 C. Both front and back illuminated chips are affected. However a T_GAIN correction has been applied to the BI chips (ACIS-5 and ACIS-7) data included here.

The ACIS spectral response calibration is less accurate at these warmer temperatures than it is at -119.7 C. Users whose science objectives depend on the most accurate spectral response (ie: fitting line-rich spectra) may notice an effect. Users whose science objectives do not depend on the most accurate spectral response should not notice an effect.