

V&V Reference Report

L2 ASCDS Version : 8.4.4

Observation 8203 - L2 Version 2
Chandra X-Ray Center

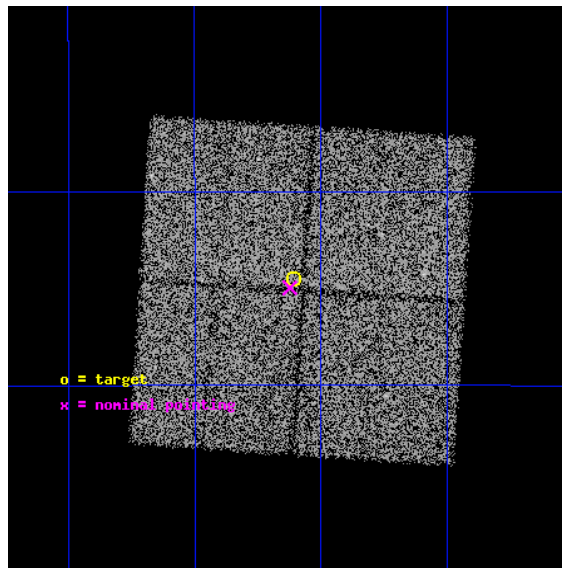
L2 Processing Date : Apr 28 2012

Contents

1	Front	2
2	OBI	3
2.1	OBI	3
2.1.1	Images	3
2.1.2	Bias	3
2.1.3	Parameters	4
2.1.4	Events	4
2.2	Compared Parameters	5
2.3	Aspect	6
2.4	Star Slots	9
2.4.1	Slot 3	9
2.4.2	Slot 4	10
2.4.3	Slot 5	11
2.4.4	Slot 6	12
2.4.5	Slot 7	13
2.5	FID Slots	14
2.5.1	Slot 0	14
2.5.2	Slot 1	15
2.5.3	Slot 2	16
A	Summary	17
A.1	Status	17
A.2	Comments	17

1 Front

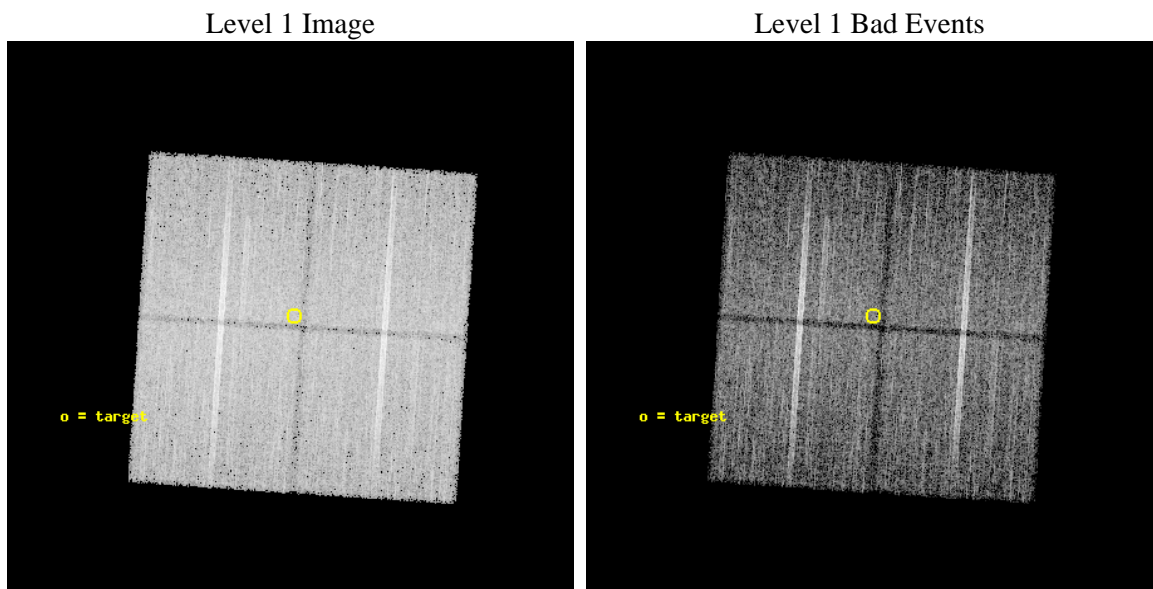
seq_num	600639	Sequence number
obs_id	8203	Observation id
title	Galactic Bulge Latitude Survey-2	Proposal title
observer	Professor Johnathan Grindlay	Principal investigator
object	GBW23	Source name
dtcycle	0	
cycle	P	events from which exps? Prim/Second/Both
ra_targ	265.5275	Observer's specified target RA [deg]
dec_targ	-28.241833	Observer's specified target Dec [deg]
ra_nom	265.53081863023	Nominal RA [deg]
dec_nom	-28.249381839682	Nominal Dec [deg]
roll_nom	273.81026298664	Nominal Roll [deg]
revision	2	Processing version of data
ontime	14489.400111437	Sum of GTIs [s]
livetime	14300.08543204	Livetime [s]
ontime0	14486.259141088	Sum of GTIs [s]
ontime1	14486.259141088	Sum of GTIs [s]
ontime2	14489.400111437	Sum of GTIs [s]
ontime3	14489.400111437	Sum of GTIs [s]
l2events	65820	Number of level 2 events



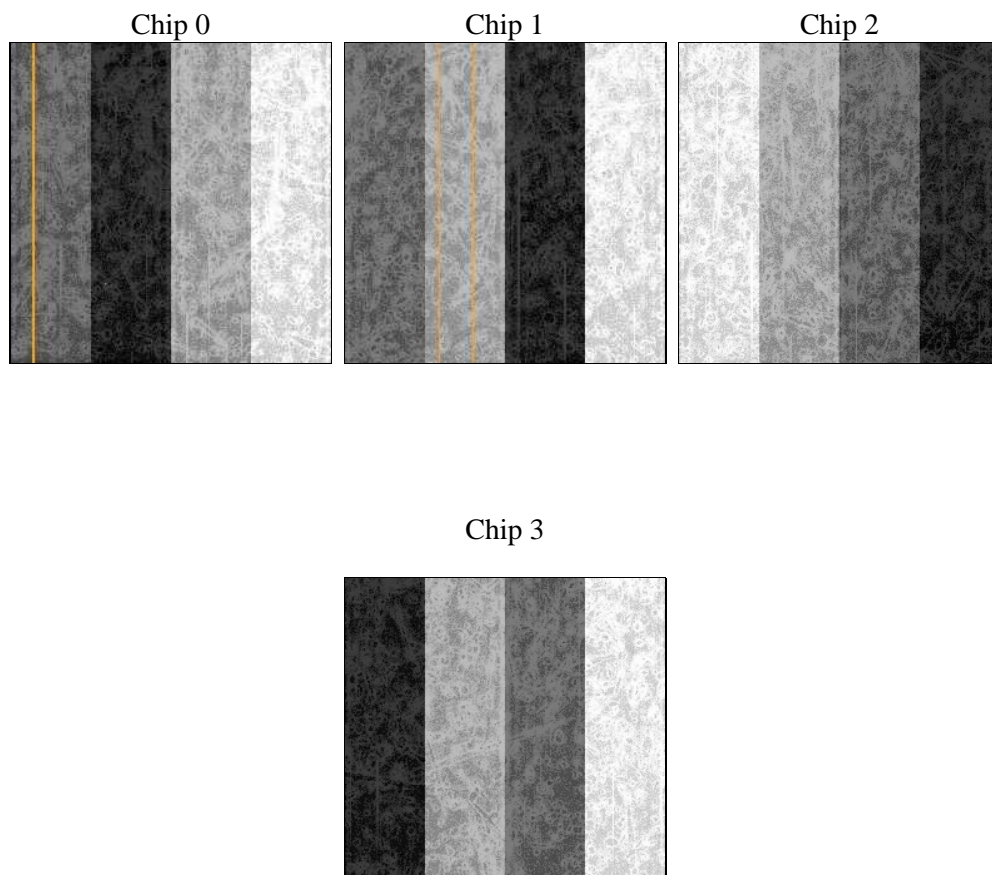
2 OBI

2.1 OBI

2.1.1 Images



2.1.2 Bias



2.1.3 Parameters

obi_num	0	Obi number	sched_exp_time	14700.000000	[s] Scheduled observation exposure time
ascdsver	8.4.4	Processing system revision	ontime	14489.400111437	Sum of GTIs [s]
caldsver	4.4.9	 	ontime0	14486.259141088	Sum of GTIs [s]
date	2012-04-28T16:20:55	Date and time of file creation	ontime1	14486.259141088	Sum of GTIs [s]
revision	2	Processing version of data	ontime2	14489.400111437	Sum of GTIs [s]
			ontime3	14489.400111437	Sum of GTIs [s]
			l1events	538514	Number of level 1 events

2.1.4 Events

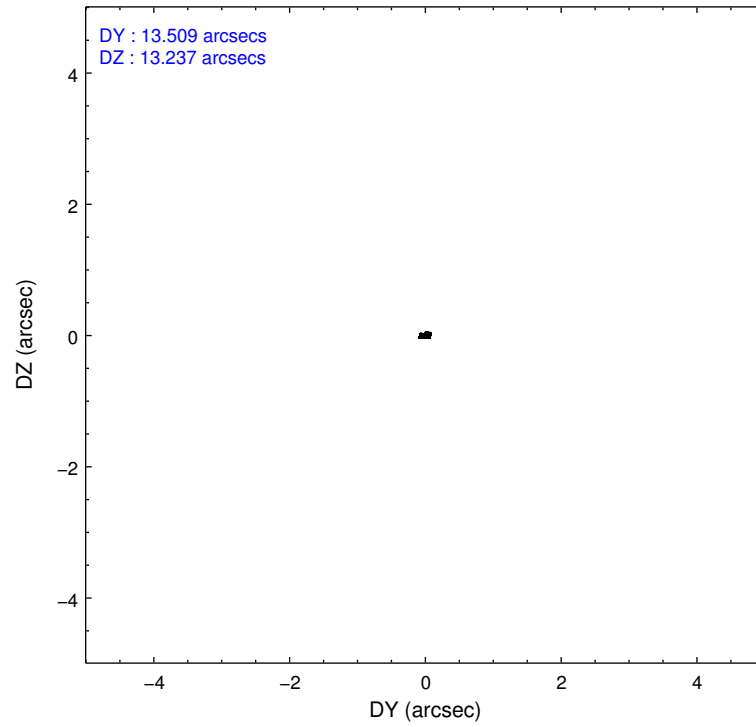
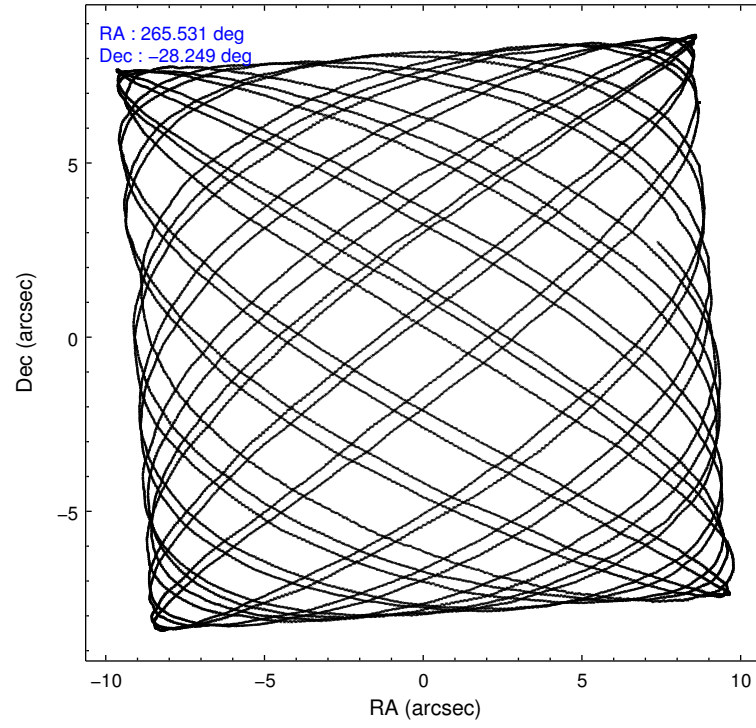
	ccd 0	ccd 1	ccd 2	ccd 3
level 1 events	131207	130853	140866	135588
rejected events	112498	111012	121764	117221
rejected %	85%	84%	86%	86%

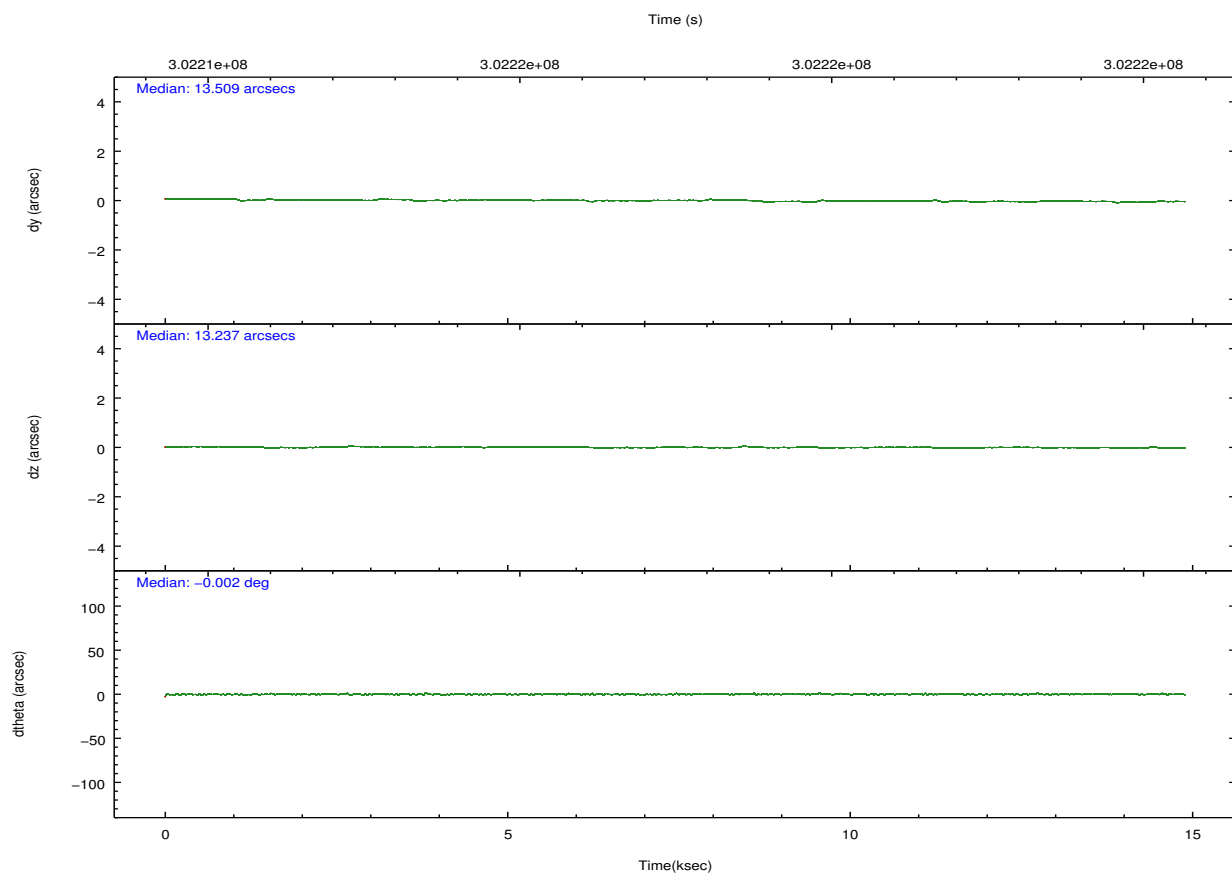
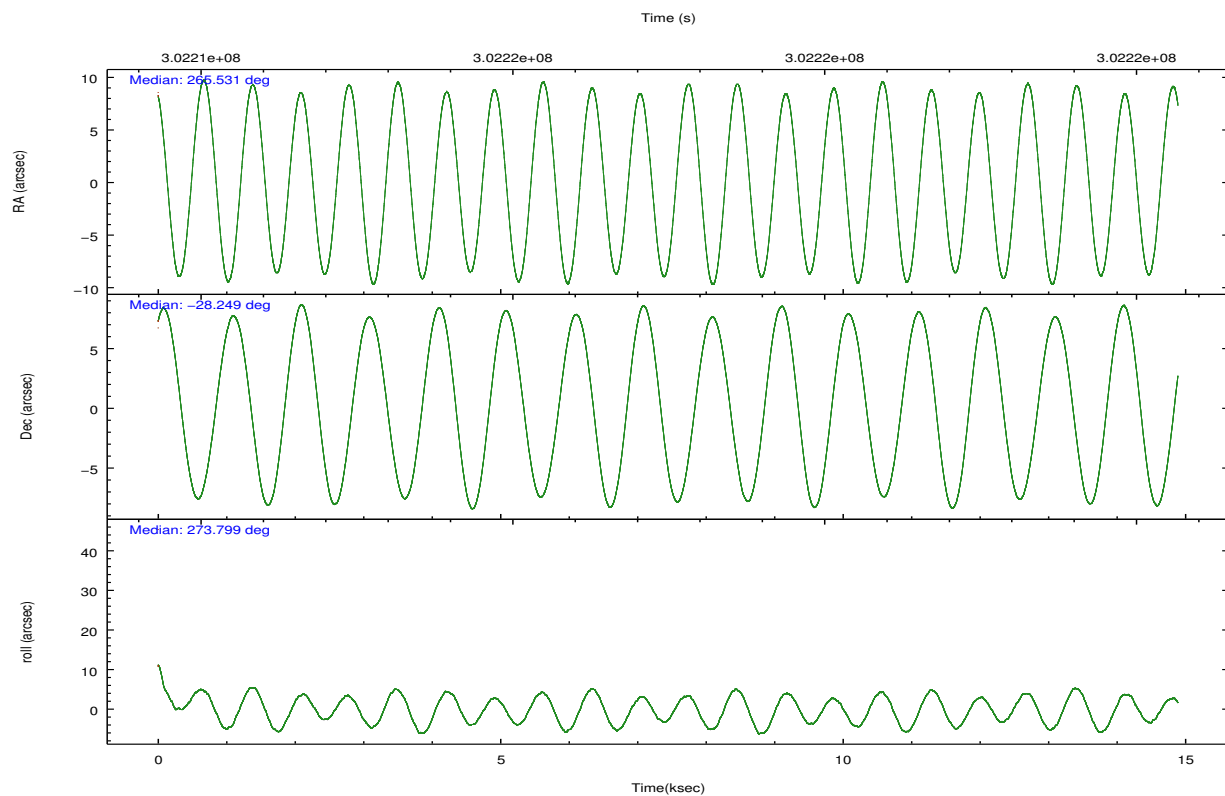
	ccd 0	ccd 1	ccd 2	ccd 3
grade 0 events	8691	8417	9505	8715
	6%	6%	6%	6%
grade 1 events	97	74	102	117
	0%	0%	0%	0%
grade 2 events	3881	4339	3652	3410
	2%	3%	2%	2%
grade 3 events	1700	1760	1563	1659
	1%	1%	1%	1%
grade 4 events	1532	1724	1638	1687
	1%	1%	1%	1%
grade 5 events	5603	6117	5377	6464
	4%	4%	3%	4%
grade 6 events	2908	3606	2751	2906
	2%	2%	1%	2%
grade 7 events	106795	104816	116278	110630
	81%	80%	82%	81%

2.2 Compared Parameters

Parameter	Planned	Actual	Parameter	Planned	Actual
Instrument	ACIS	ACIS	Obspar format version number	7	7
Detector	ACIS-0123	ACIS-0123	Obspar file type	PREDICTED	ACTUAL
Grating	NONE	NONE	Obspar update status	NONE	UPDATED
Data mode	VFAINT	VFAINT	Number of optional ACIS chips dropped	0	0
Observation mode	POINTING	POINTING	On-chip summing requested	N	N
[deg] Pointing RA	265.513334	265.530818630232	Subarray requested	NONE	NONE
[deg] Pointing Dec	-28.226584	-28.24938183968225	Alternating exposures requested	N	N
[deg] Pointing Roll	273.593302	273.8102629866375	[s] Primary exposure time	0.000000	3.1
[mm] SIM focus pos	-0.782348	-0.7809083437167272			
[mm] SIM defocus	0	0.001439871863259334			
[mm] SIM translation stage pos	-233.592463	-233.5874344608287			
[mm] SIM translation stage offset	0	-0.005018542100998502			
[s] Observation start time (MET)	302210235.184000	302209859.72318			
Observation start date	2007-07-30T19:16:10	2007-07-30T19:10:59			
[s] Observation end time (MET)	302224935.184000	302225854.84895			
Observation end date	2007-07-30T23:21:10	2007-07-30T23:37:34			
Read mode	TIMED	TIMED			

2.3 Aspect



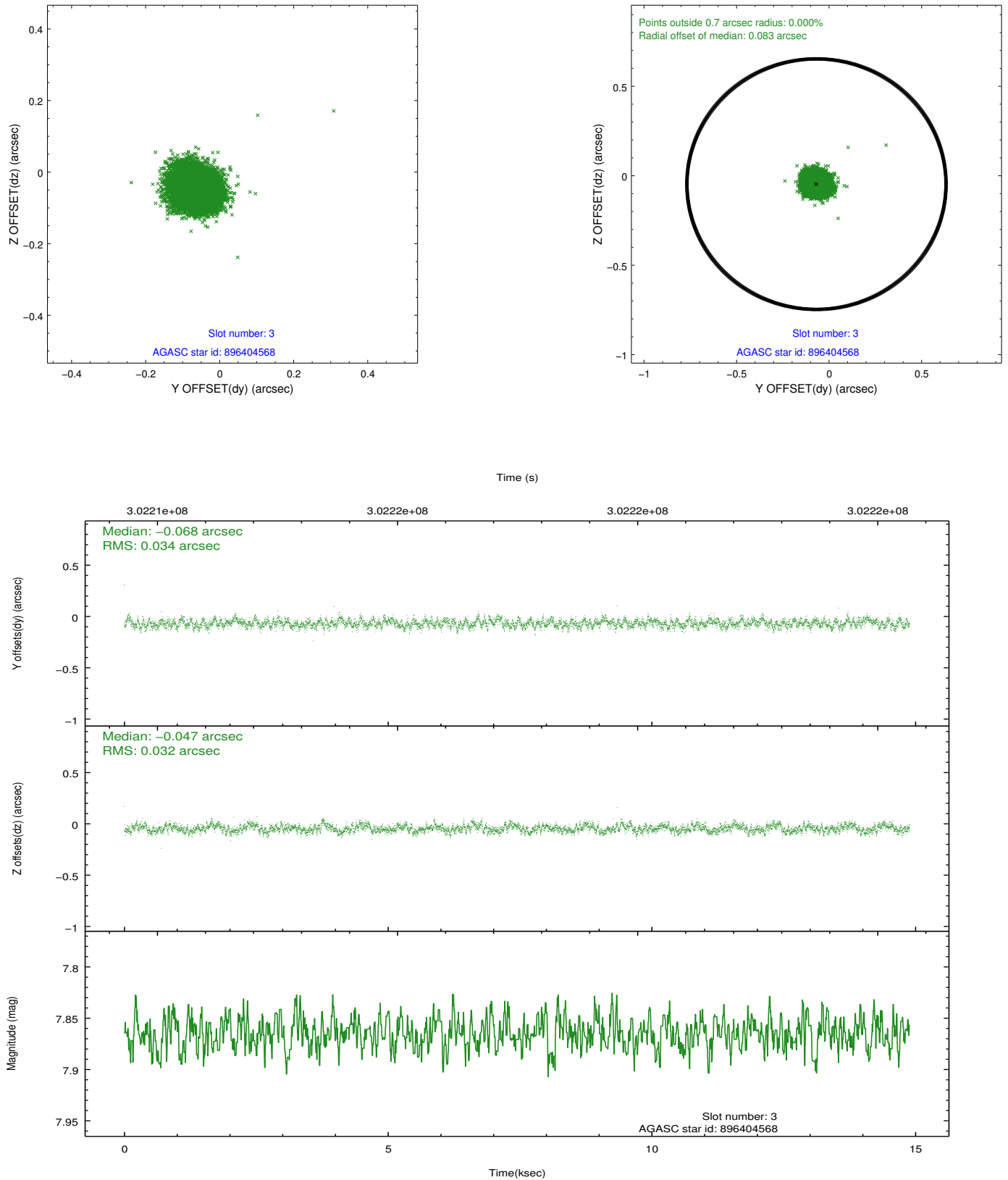


Slot Statistics

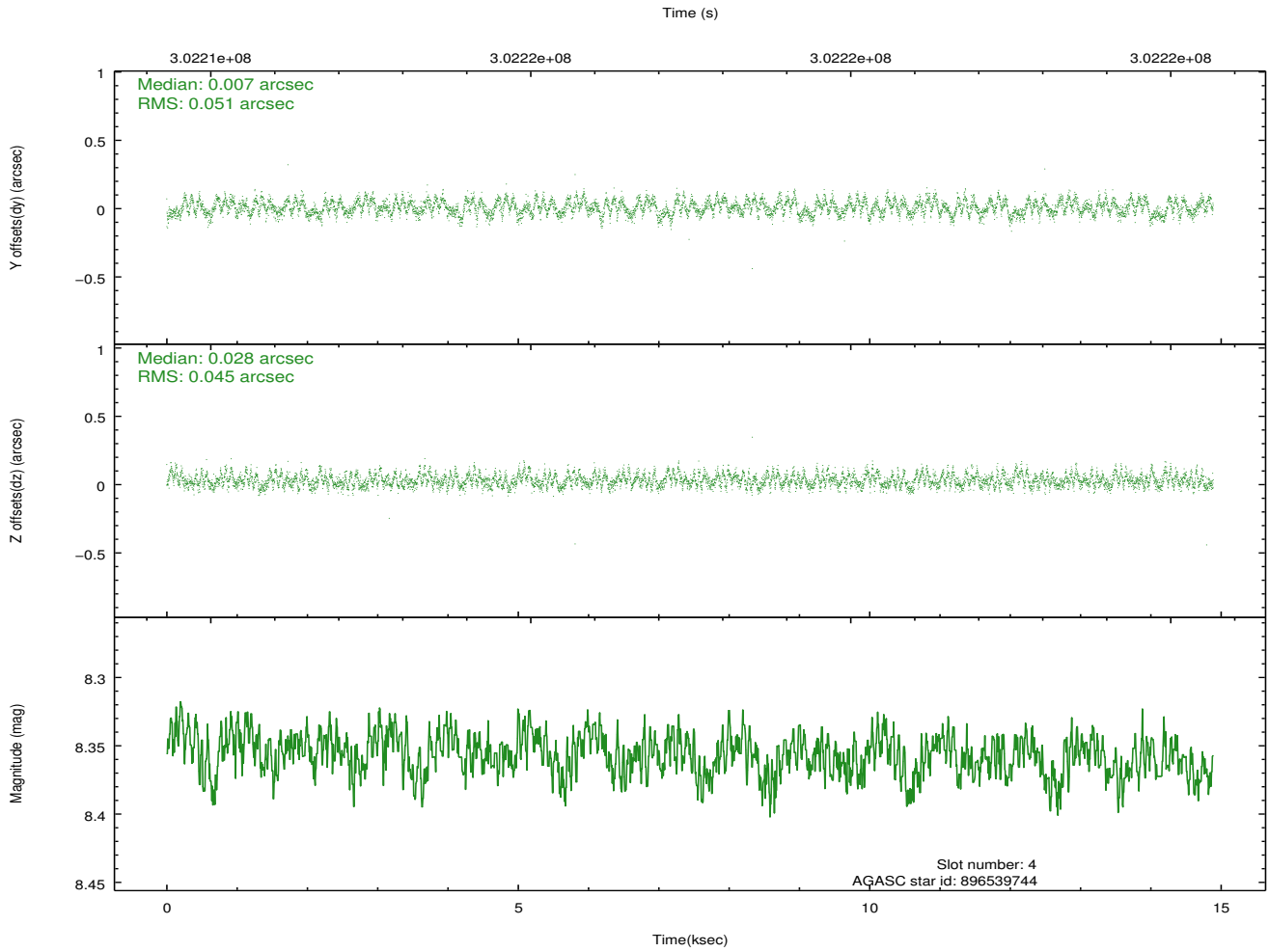
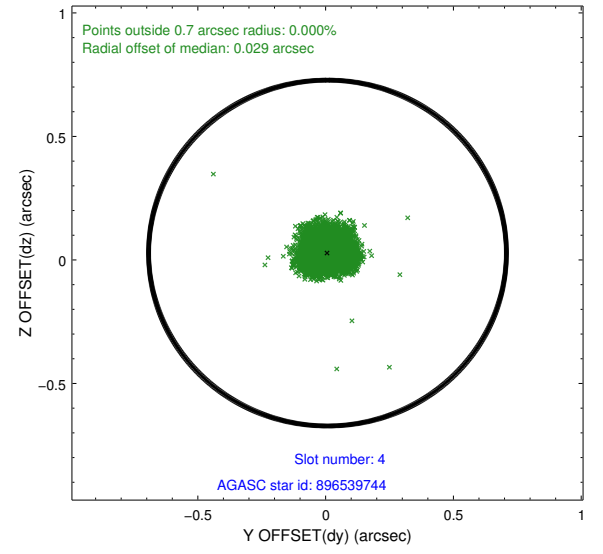
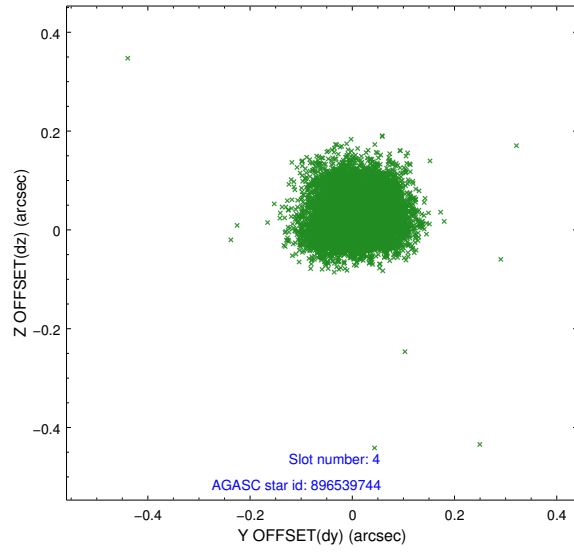
slot	status	id	mag	n_pts	med_dy	med_dz	dr1	dr2	ra	dec	mean_y	mean_z
0	FID	ACIS-I-1	7.23	3632	0.051	-0.001	0.006	0.011	0.000000	0.000000	926.05	-836.79
1	FID	ACIS-I-5	7.23	3630	-0.225	0.056	0.006	0.011	0.000000	0.000000	-1822.17	1060.60
2	FID	ACIS-I-6	7.24	3631	0.083	0.015	0.007	0.010	0.000000	0.000000	391.29	1705.41
3	GUIDE	896404568	7.87	7263	-0.068	-0.047	0.050	0.079	265.687293	-28.431080	769.78	503.51
4	GUIDE	896539744	8.36	7262	0.007	0.028	0.073	0.112	266.154264	-28.178023	-41.64	2040.52
5	GUIDE	896405616	7.85	7260	-0.118	-0.023	0.060	0.096	264.752771	-28.412560	526.06	-2446.20
6	GUIDE	896402976	7.54	7263	0.192	-0.003	0.062	0.098	265.099474	-28.923203	2424.31	-1458.84
7	GUIDE	896538248	8.90	7259	-0.011	0.040	0.080	0.129	266.238138	-28.240101	199.66	2290.51

2.4 Star Slots

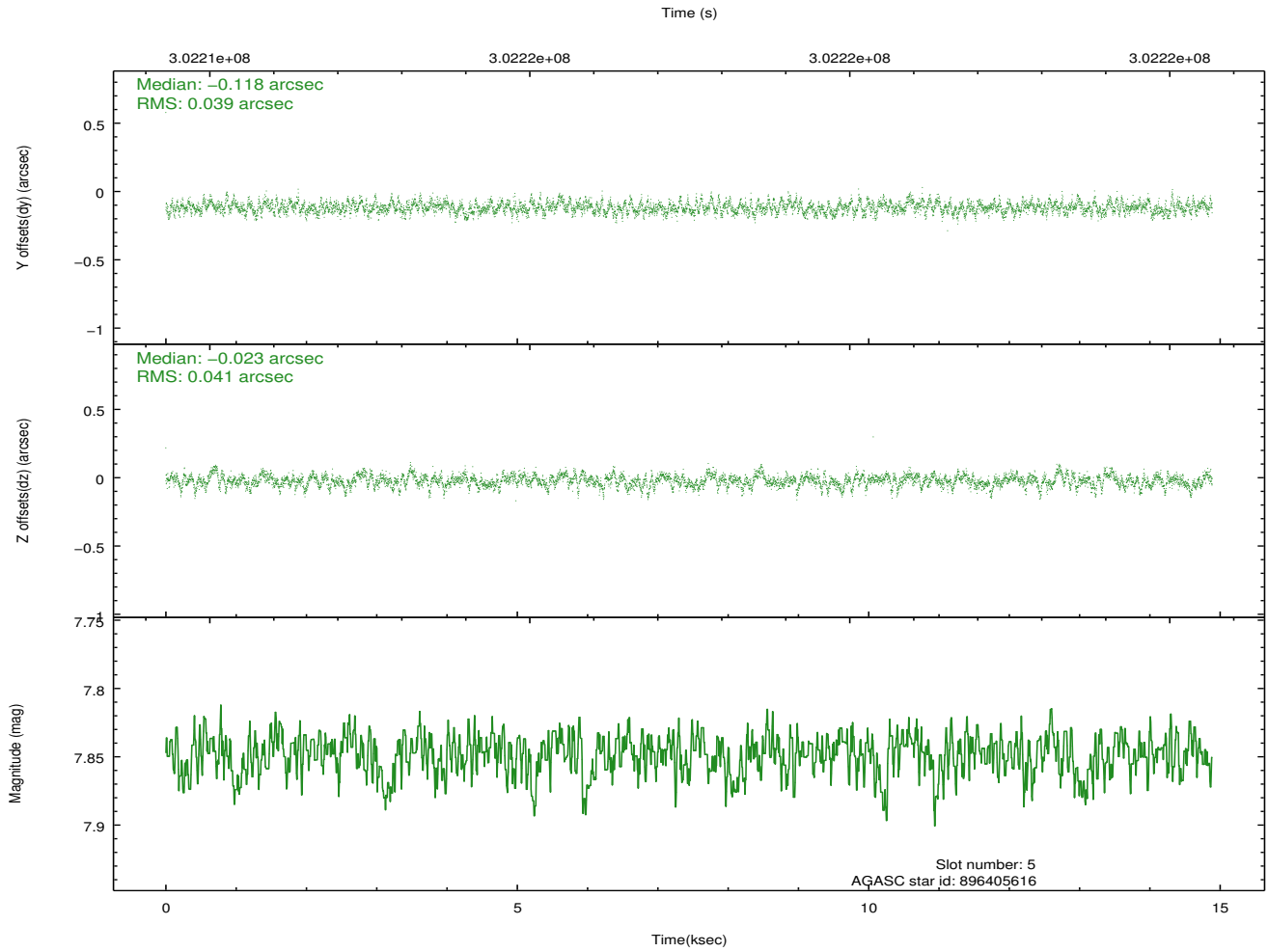
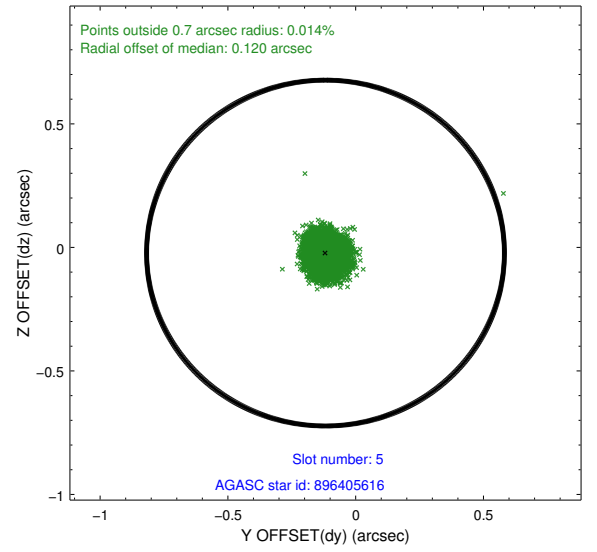
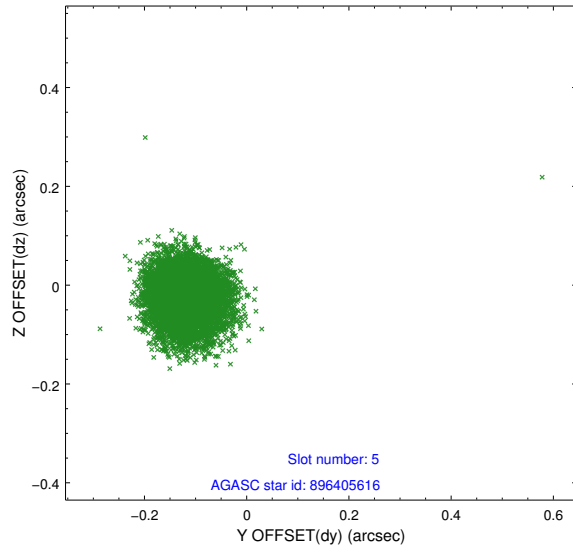
2.4.1 Slot 3



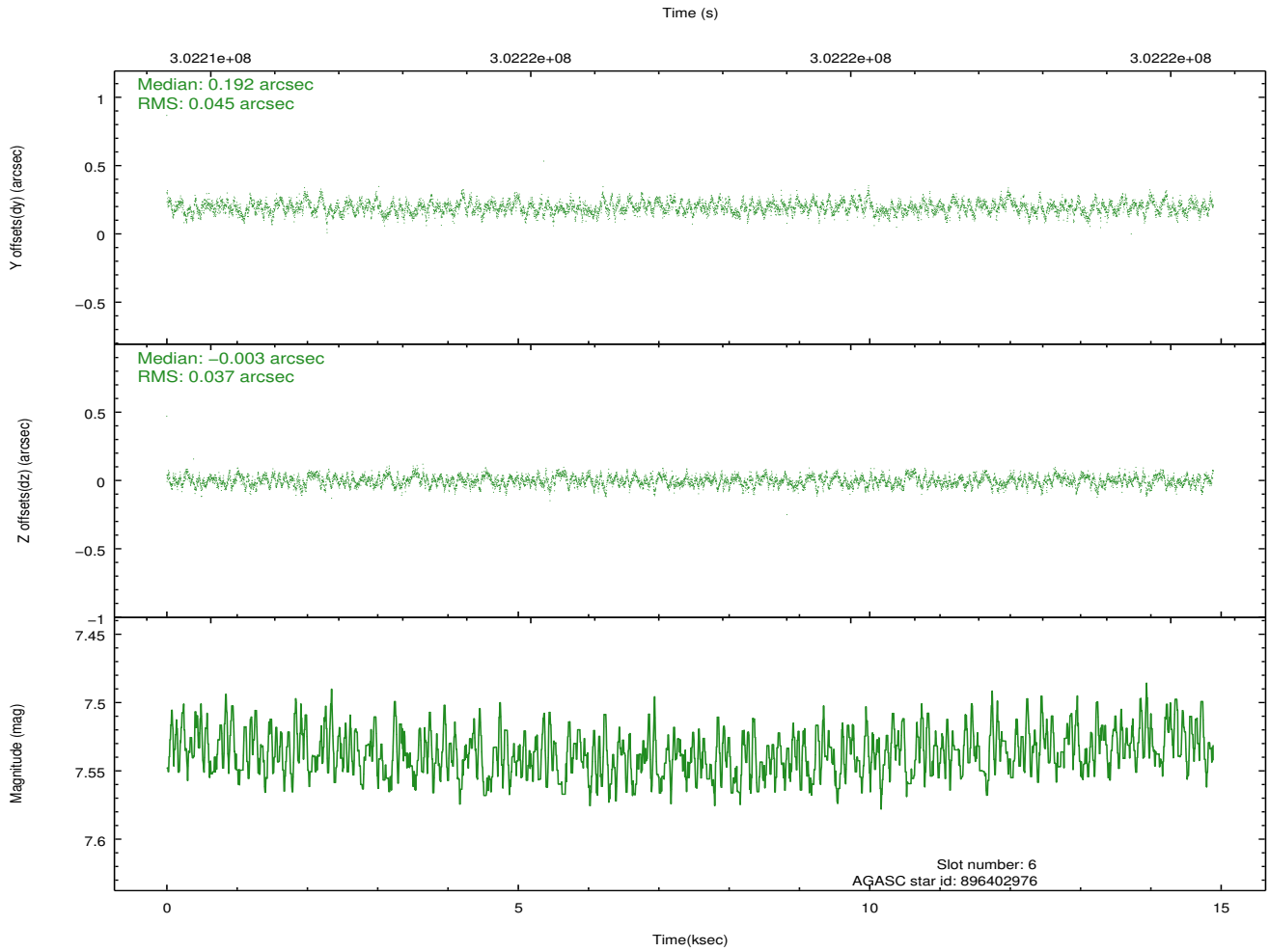
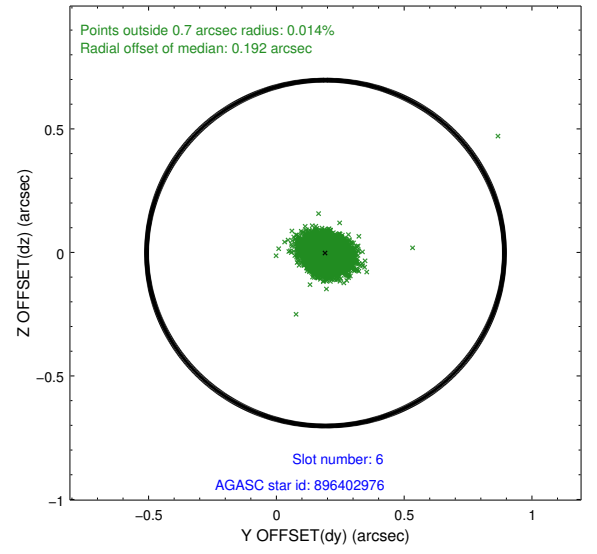
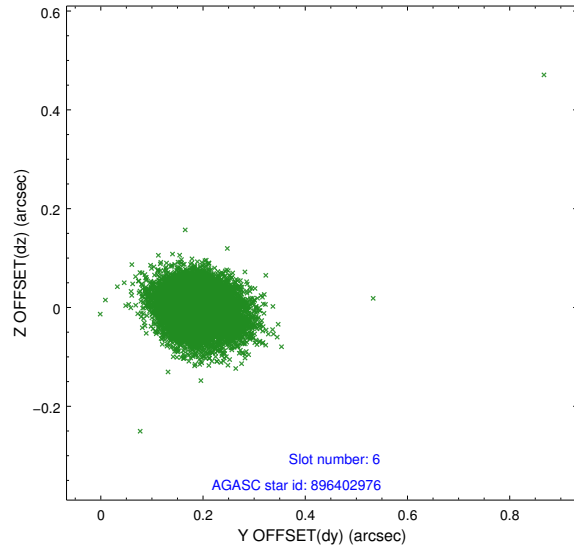
2.4.2 Slot 4



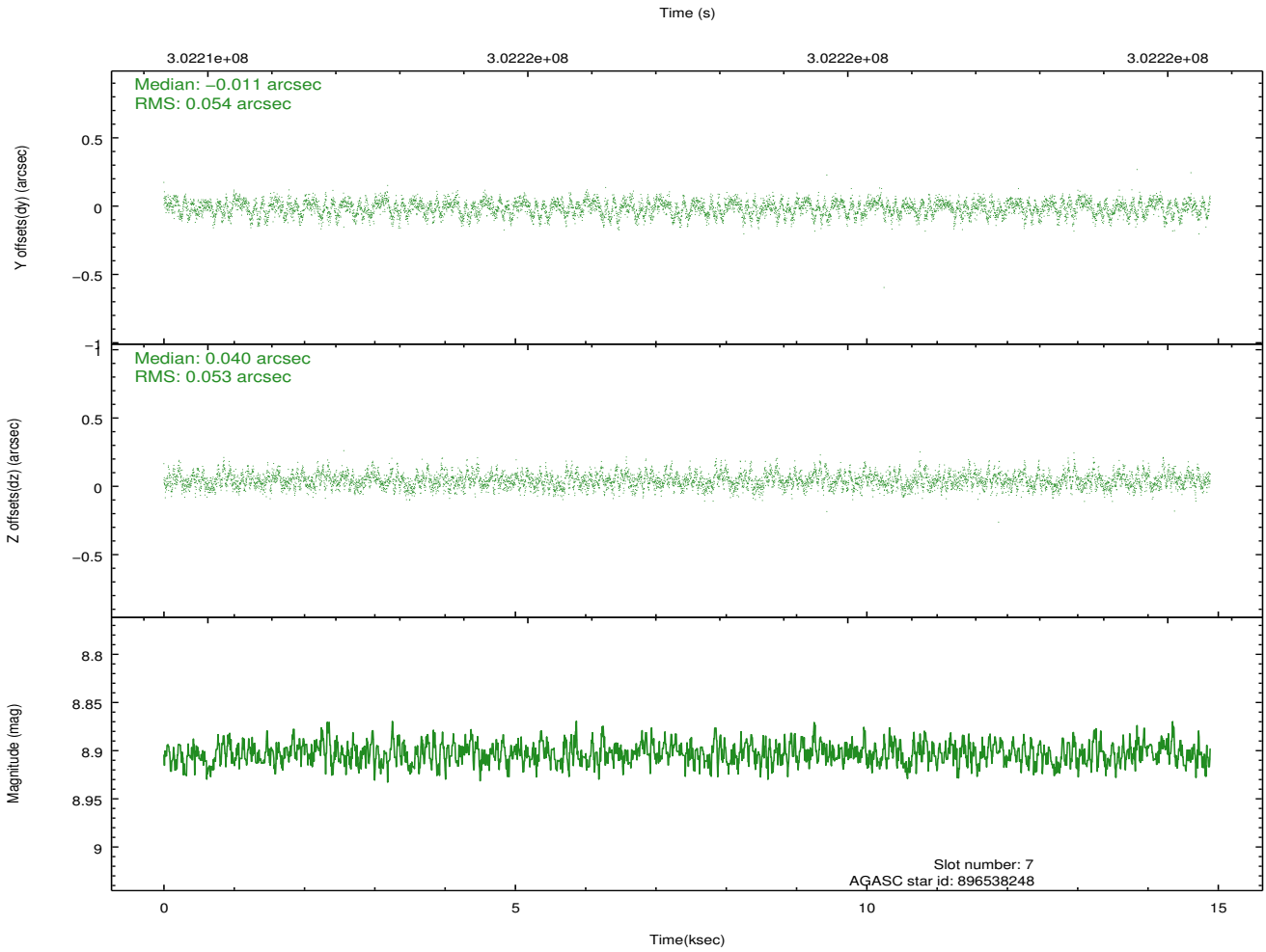
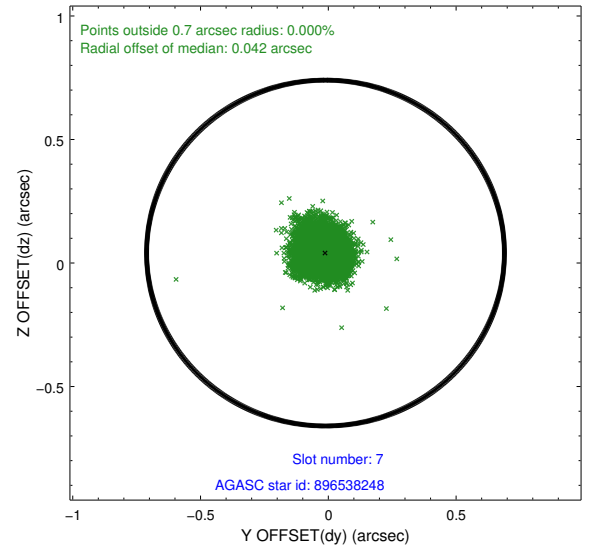
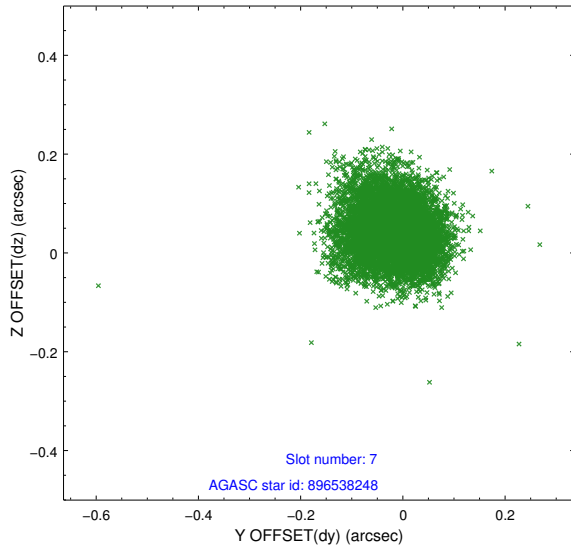
2.4.3 Slot 5



2.4.4 Slot 6

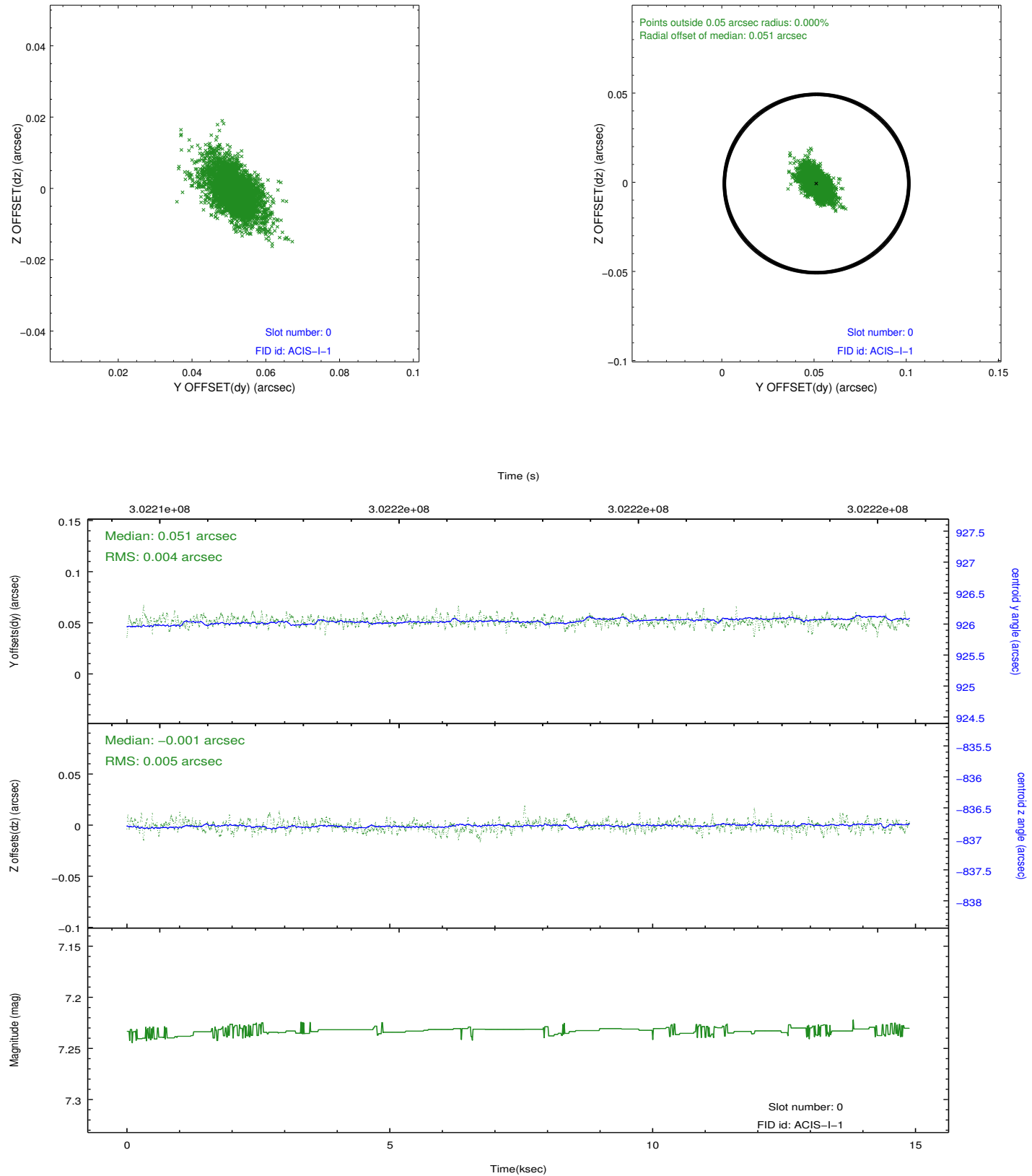


2.4.5 Slot 7

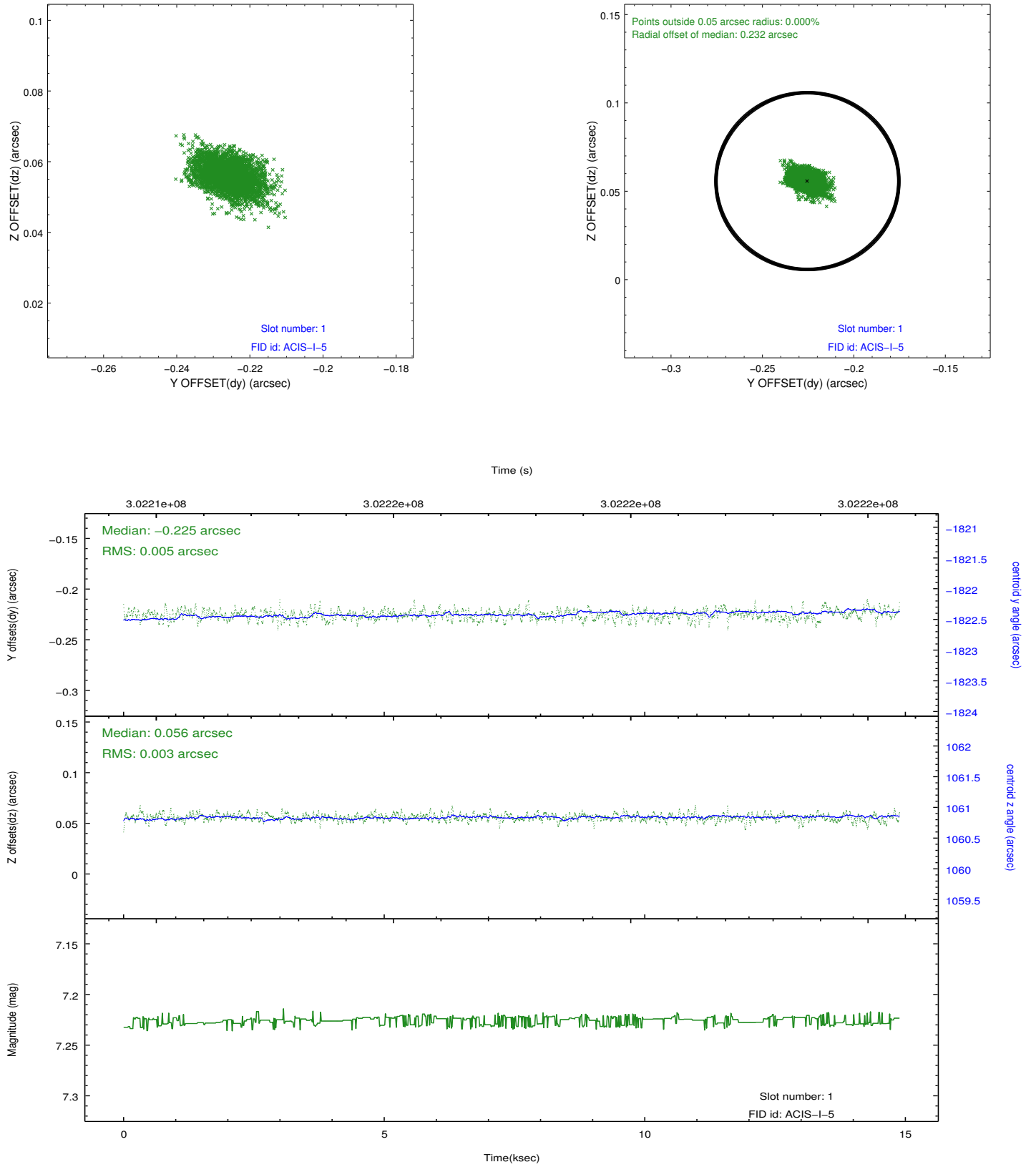


2.5 FID Slots

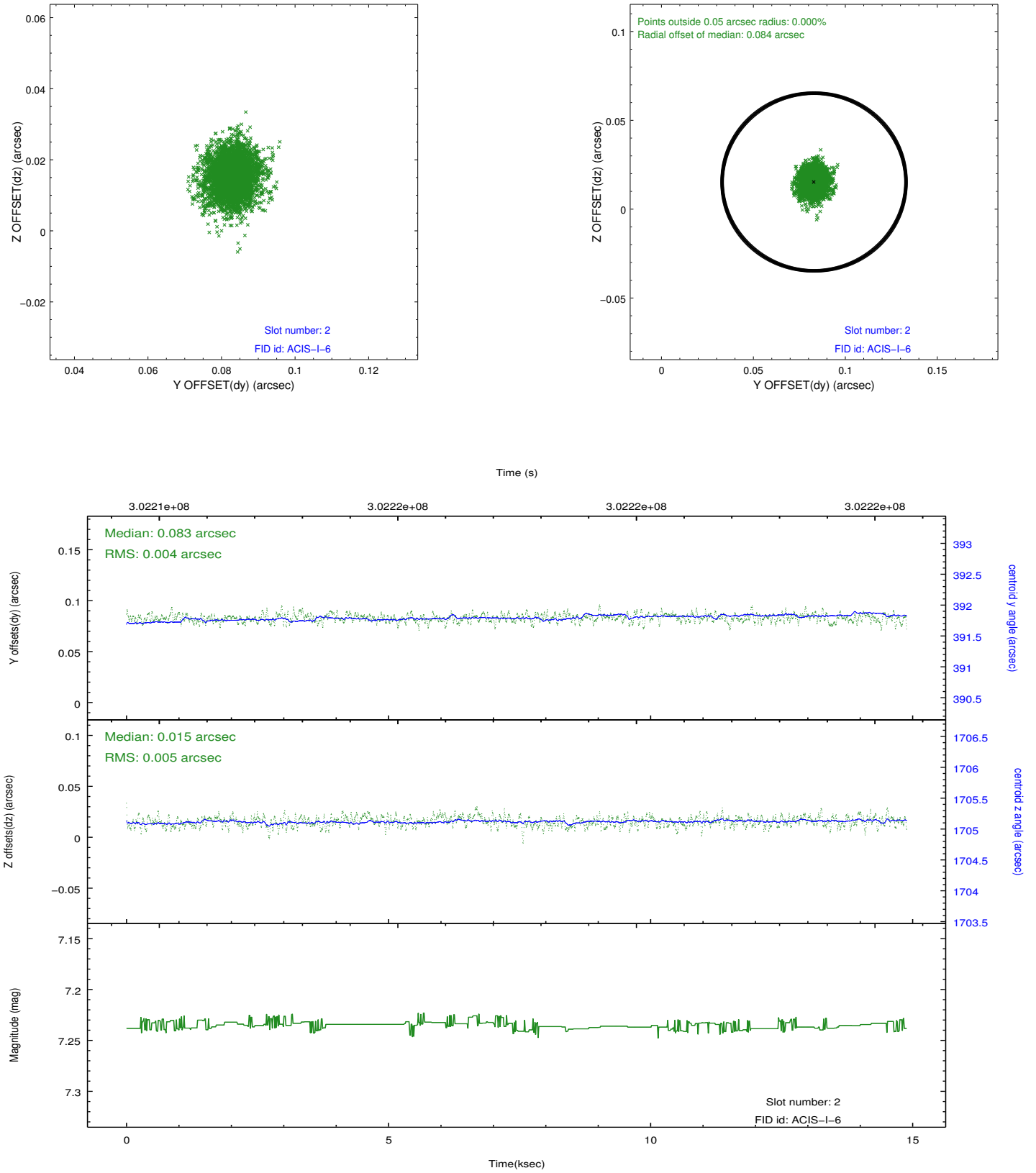
2.5.1 Slot 0



2.5.2 Slot 1



2.5.3 Slot 2



A Summary

A.1 Status

V&V Scientist	Jen Lauer
V&V Date (YYYY-MM-DD)	2012.05.01
V&V Edition	1
V&V Disposition and Status	OK
V&V Charge Time	14.4894001

A.2 Comments

Roll constraint met.