

V&V Reference Report

L2 ASCDS Version : 8.4.4

Observation 8093 - L2 Version 2
Chandra X-Ray Center

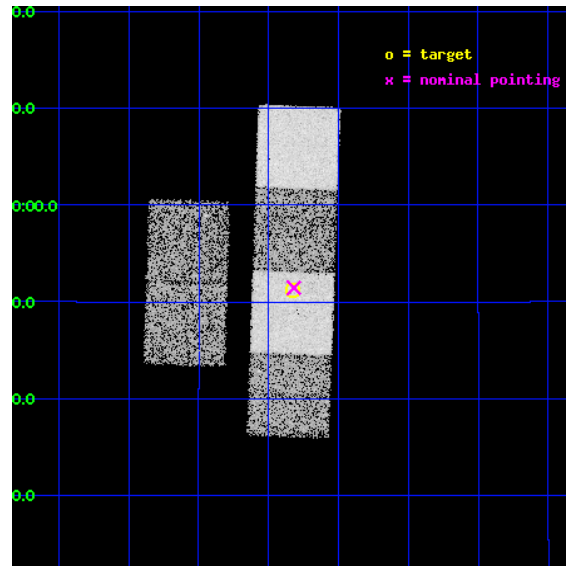
L2 Processing Date : May 10 2012

Contents

1	Front	2
2	OBI	3
2.1	OBI	3
2.1.1	Images	3
2.1.2	Bias	3
2.1.3	Parameters	4
2.1.4	Events	4
2.2	Compared Parameters	5
2.3	Aspect	6
2.4	Star Slots	9
2.4.1	Slot 3	9
2.4.2	Slot 4	10
2.4.3	Slot 5	11
2.4.4	Slot 6	12
2.4.5	Slot 7	13
2.5	FID Slots	14
2.5.1	Slot 0	14
2.5.2	Slot 1	15
2.5.3	Slot 2	16
A	Summary	17
A.1	Status	17
A.2	Comments	17

1 Front

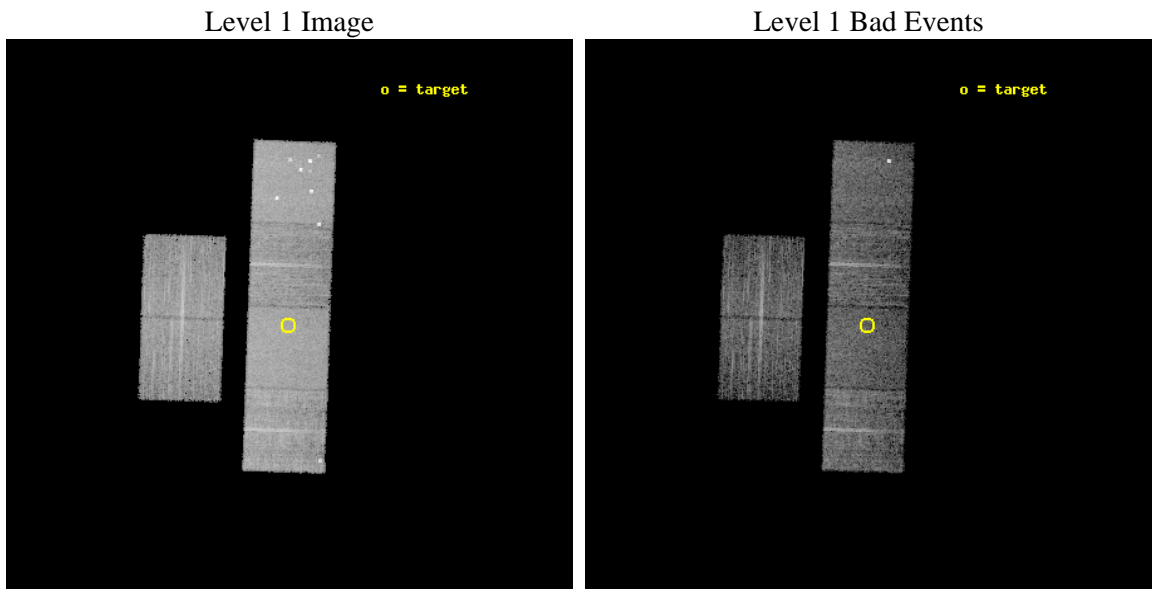
seq_num	900634	Sequence number
obs_id	8093	Observation id
title	The Duty Cycle of Supermassive Black Holes: X-raying Virgo	Proposa
observer	Prof Tommaso Treu	Principal investigator
object	1499	Source name
dtcycle	0	
cycle	P	events from which exps? Prim/Second/Both
ra_targ	188.3325	Observer's specified target RA [deg]
dec_targ	12.853556	Observer's specified target Dec [deg]
ra_nom	188.32968701225	Nominal RA [deg]
dec_nom	12.857621744337	Nominal Dec [deg]
roll_nom	91.9818887498	Nominal Roll [deg]
revision	2	Processing version of data
ontime	5157.4796278477	Sum of GTIs [s]
livetime	5092.1725153385	Livetime [s]
ontime2	5157.520667851	Sum of GTIs [s]
ontime3	5157.3565078378	Sum of GTIs [s]
ontime5	5157.4385878444	Sum of GTIs [s]
ontime6	5157.3975478411	Sum of GTIs [s]
ontime7	5157.4796278477	Sum of GTIs [s]
ontime8	5147.5923870206	Sum of GTIs [s]
l2events	86444	Number of level 2 events



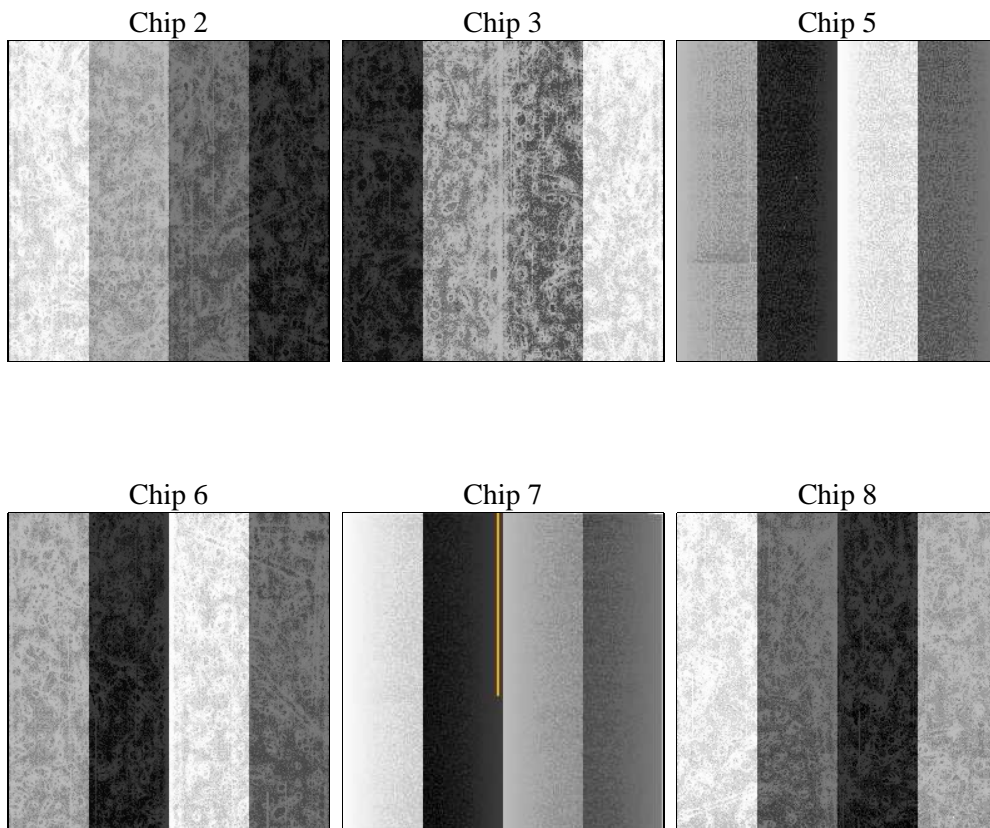
2 OBI

2.1 OBI

2.1.1 Images



2.1.2 Bias



2.1.3 Parameters

obi_num	1	Obi number	sched_exp_time	5400.000000	[s] Scheduled observation exposure time
ascdsver	8.4.4	Processing system revision	ontime	5157.4796278477	Sum of GTIs [s]
caldbver	4.4.9	 	ontime2	5157.520667851	Sum of GTIs [s]
date	2012-05-10T08:32:57	Date and time of file creation	ontime3	5157.3565078378	Sum of GTIs [s]
revision	2	Processing version of data	ontime5	5157.4385878444	Sum of GTIs [s]
			ontime6	5157.3975478411	Sum of GTIs [s]
			ontime7	5157.4796278477	Sum of GTIs [s]
			ontime8	5147.5923870206	Sum of GTIs [s]
			l1events	380502	Number of level 1 events

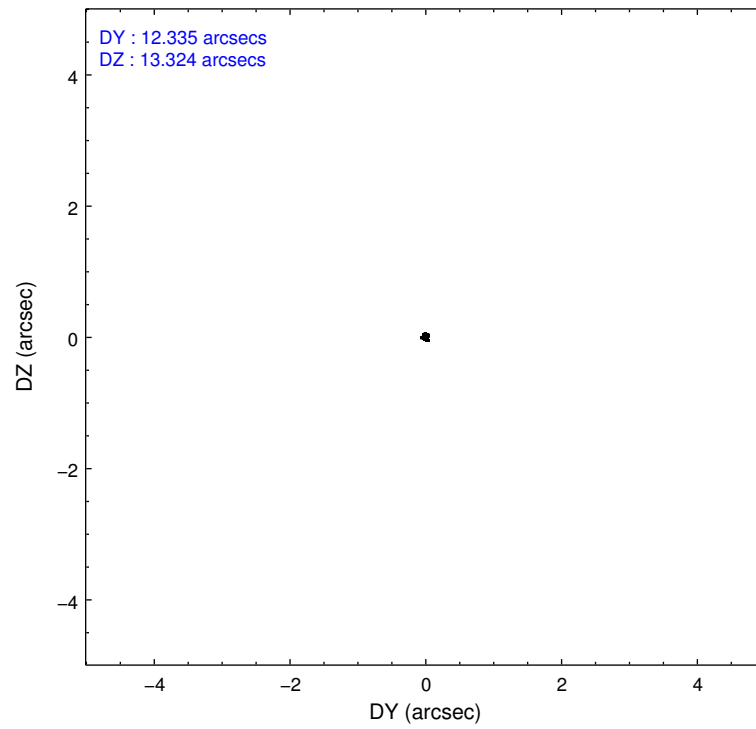
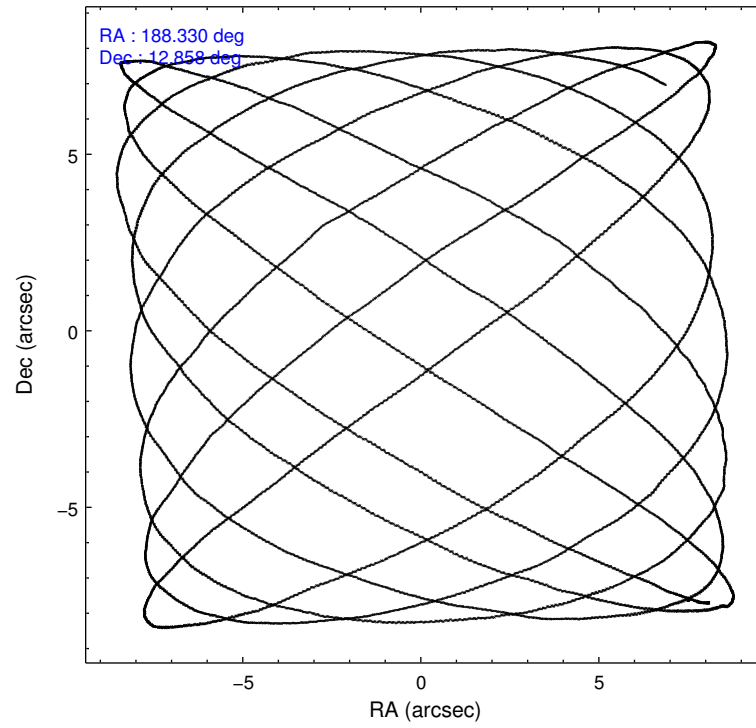
2.1.4 Events

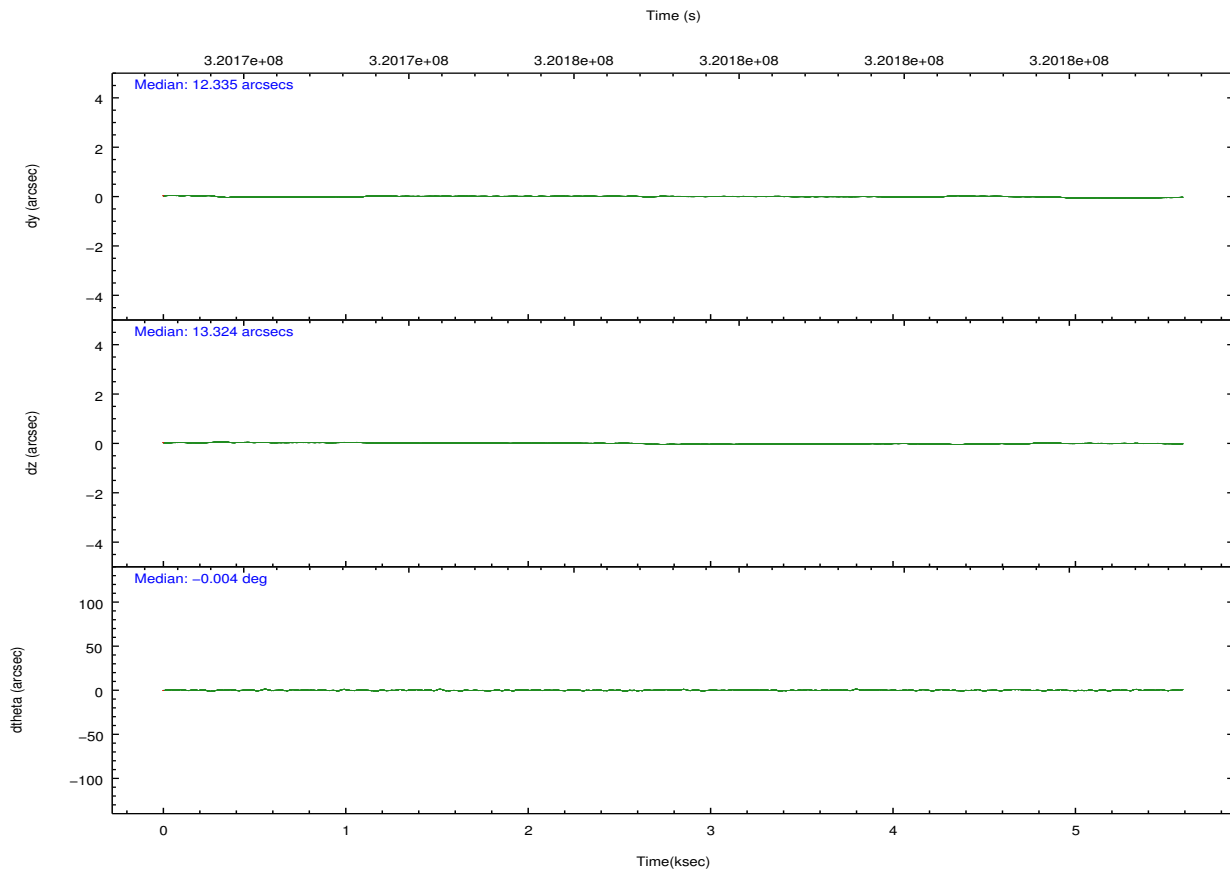
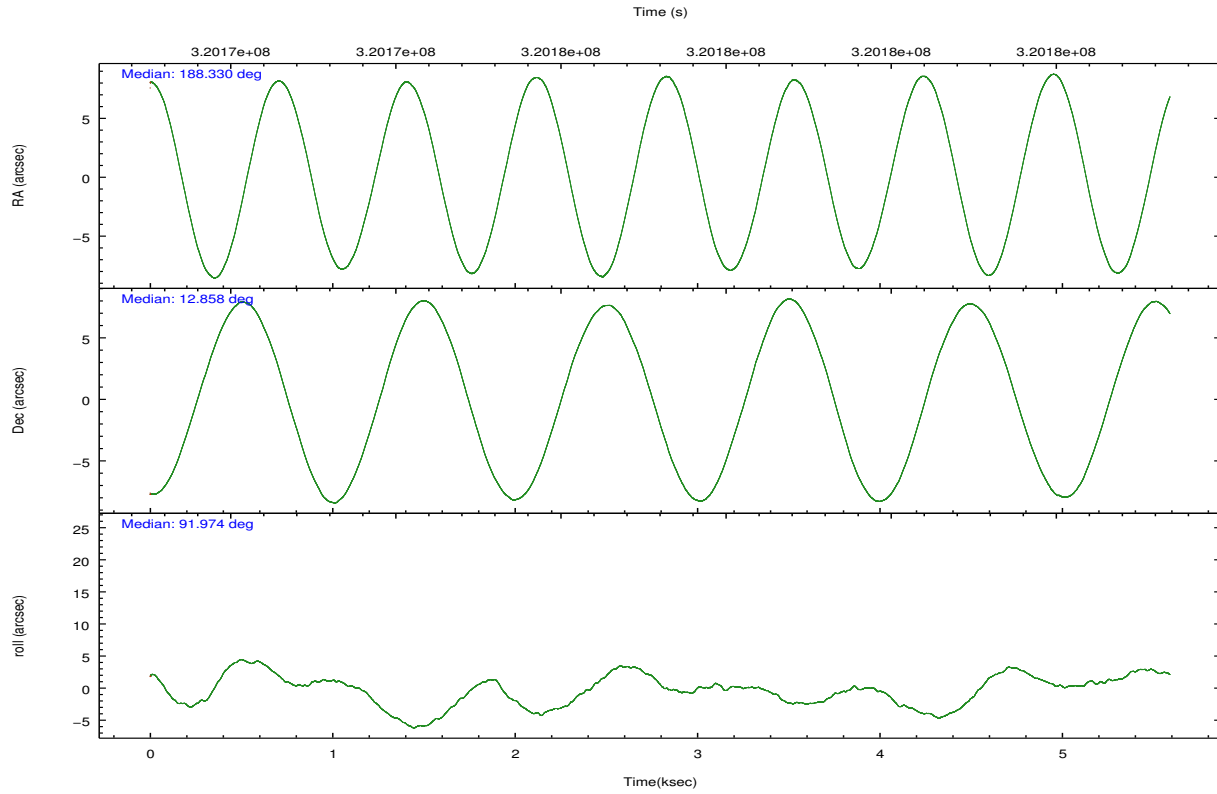
	ccd 2	ccd 3	ccd 5	ccd 6	ccd 7	ccd 8		ccd 2	ccd 3	ccd 5	ccd 6	ccd 7	ccd 8
level 1 events	52506	48748	86044	52367	70972	69865	grade 0 events	2792	2987	7446	2871	2728	5818
rejected events	46349	42367	43992	45644	40970	53937		5%	6%	8%	5%	3%	8%
rejected %	88%	86%	51%	87%	57%	77%	grade 1 events	29	40	114	18	64	72
								0%	0%	0%	0%	0%	0%
							grade 2 events	1309	1209	11552	1441	6214	3401
								2%	2%	13%	2%	8%	4%
							grade 3 events	558	556	1324	584	2536	1432
								1%	1%	1%	1%	3%	2%
							grade 4 events	534	554	1146	603	2506	1387
								1%	1%	1%	1%	3%	1%
							grade 5 events	1955	2319	5301	2335	6516	3112
								3%	4%	6%	4%	9%	4%
							grade 6 events	971	1081	20633	1230	16051	3901
								1%	2%	23%	2%	22%	5%
							grade 7 events	44358	40002	38528	43285	34357	50742
								84%	82%	44%	82%	48%	72%

2.2 Compared Parameters

Parameter	Planned	Actual	Parameter	Planned	Actual
Instrument	ACIS	ACIS	Obspar format version number	7	7
Detector	ACIS-235678	ACIS-235678	Obspar file type	PREDICTED	ACTUAL
Grating	NONE	NONE	Obspar update status	NONE	UPDATED
Data mode	FAINT	FAINT	CCD I0 on	N	N
Observation mode	POINTING	POINTING	CCD I1 on	N	N
[deg] Pointing RA	188.344916	188.329687012246	CCD I2 on	O1	Y
[deg] Pointing Dec	12.834597	12.85762174433747	CCD I3 on	O2	Y
[deg] Pointing Roll	91.821882	91.98188874980031	CCD S0 on	N	N
[mm] SIM focus pos	-0.684267	-0.6828225247311905	CCD S1 on	O3	Y
[mm] SIM defocus	0	0.001444936568705701	CCD S2 on	Y	Y
[mm] SIM translation stage pos	-190.132523	-190.1400660498719	CCD S3 on	Y	Y
[mm] SIM translation stage offset	0	0.00754346686406393	CCD S4 on	O4	Y
[s] Observation start time (MET)	320172990.184000	320172471.55287	CCD S5 on	N	N
Observation start date	2008-02-23T16:55:25	2008-02-23T16:47:51	Number of optional ACIS chips dropped	0	0
[s] Observation end time (MET)	320178390.184000	320178547.75317	On-chip summing requested	N	N
Observation end date	2008-02-23T18:25:25	2008-02-23T18:29:07	Subarray requested	NONE	NONE
Read mode	TIMED	TIMED	Alternating exposures requested	N	N
			[s] Primary exposure time	0.000000	3.2

2.3 Aspect



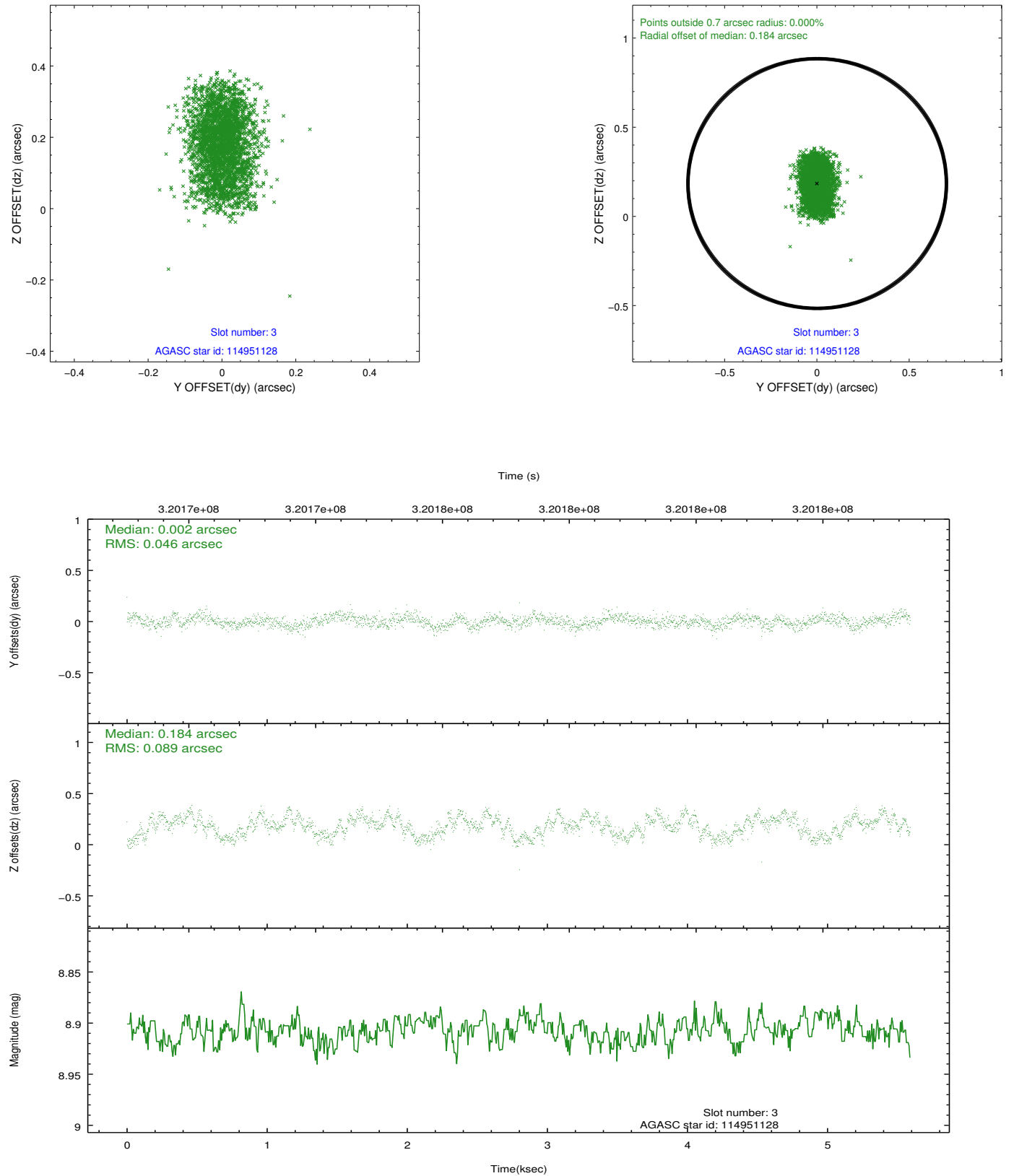


Slot Statistics

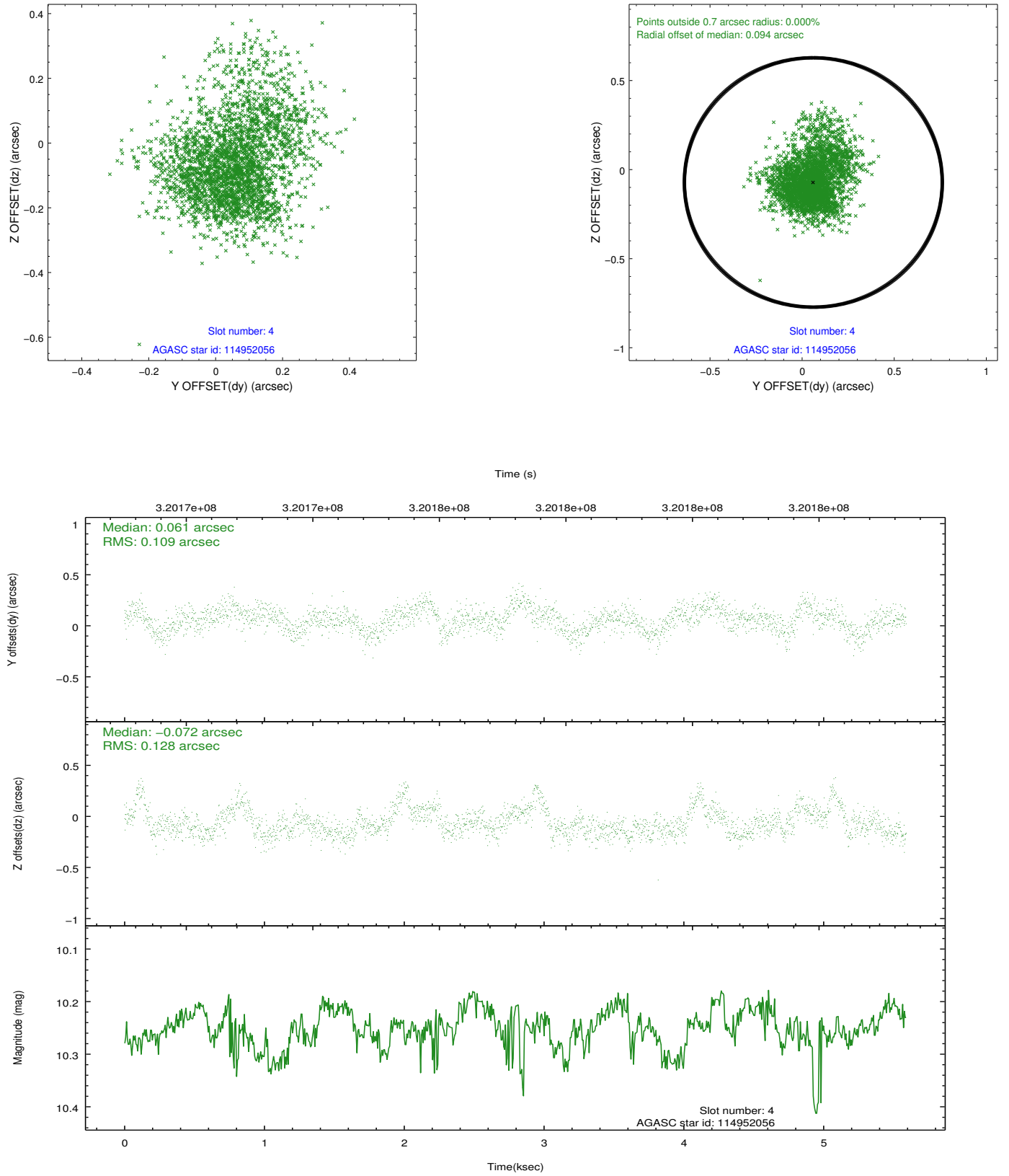
slot	status	id	mag	n_pts	med_dy	med_dz	dr1	dr2	ra	dec	mean_y	mean_z
0	FID	ACIS-S-2	7.10	1364	-0.024	-0.052	0.007	0.011	0.000000	0.000000	-765.25	-1734.71
1	FID	ACIS-S-4	7.20	1364	0.123	0.026	0.006	0.011	0.000000	0.000000	2147.68	172.74
2	FID	ACIS-S-5	7.24	1364	-0.131	0.036	0.006	0.011	0.000000	0.000000	-1816.83	167.64
3	GUIDE	114951128	8.91	2727	0.002	0.184	0.109	0.172	188.719863	12.459246	-1391.85	-1274.55
4	GUIDE	114952056	10.25	2717	0.061	-0.072	0.174	0.302	188.107019	12.208970	-2224.59	907.51
5	GUIDE	114952824	8.58	2728	0.060	-0.229	0.083	0.144	187.703904	12.486727	-1178.34	2291.91
6	GUIDE	115349088	9.30	2726	-0.141	0.017	0.130	0.214	188.777694	12.938966	328.39	-1528.24
7	GUIDE	115479688	10.04	2721	0.013	0.095	0.168	0.272	188.989208	13.490346	2291.07	-2329.57

2.4 Star Slots

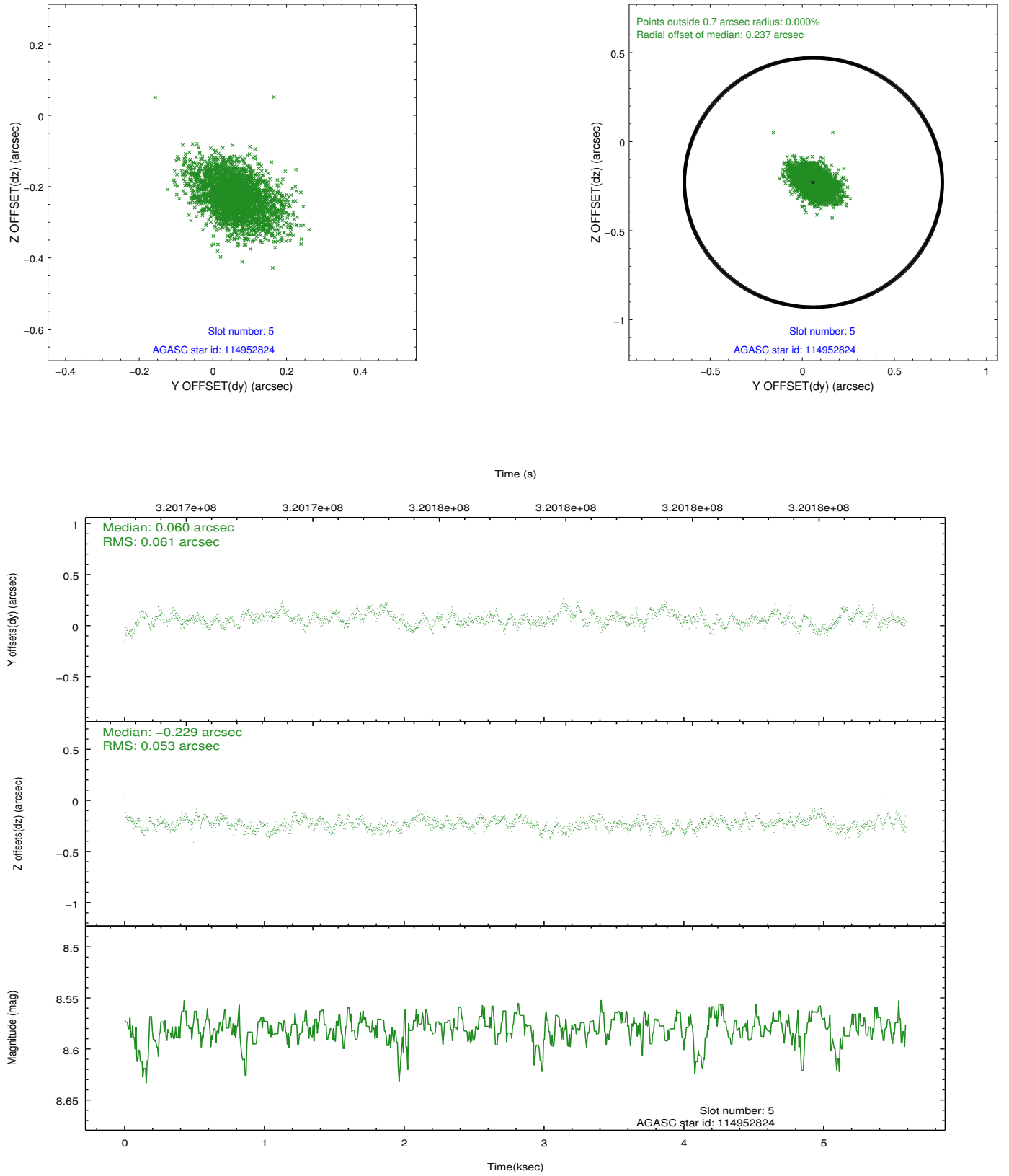
2.4.1 Slot 3



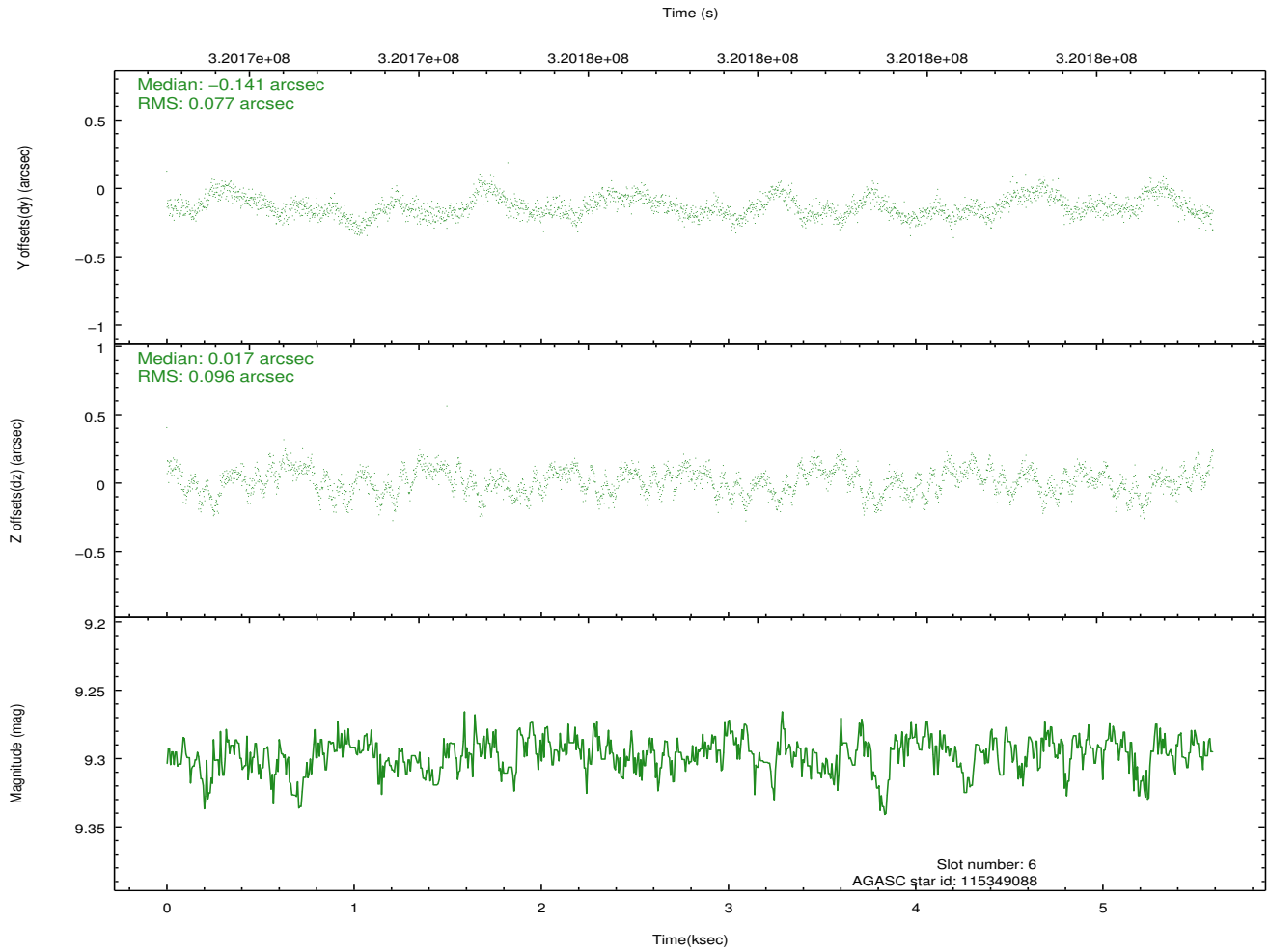
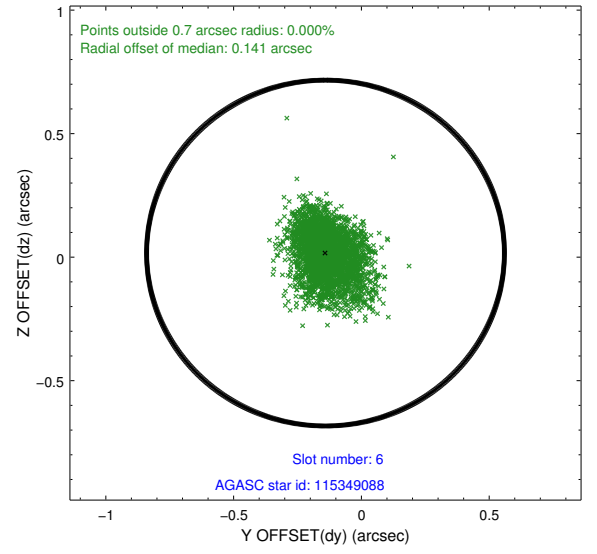
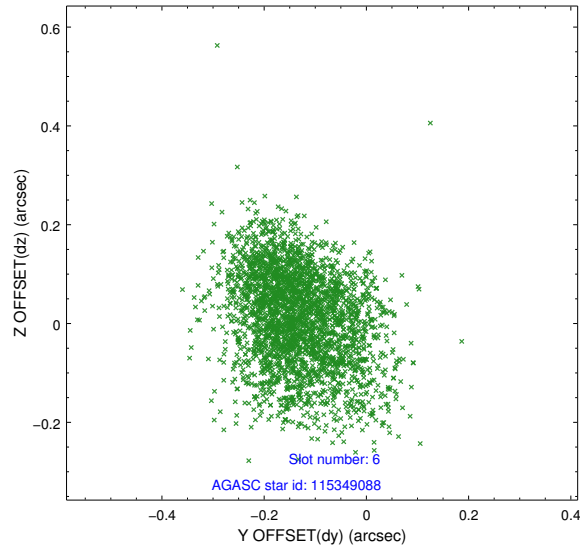
2.4.2 Slot 4



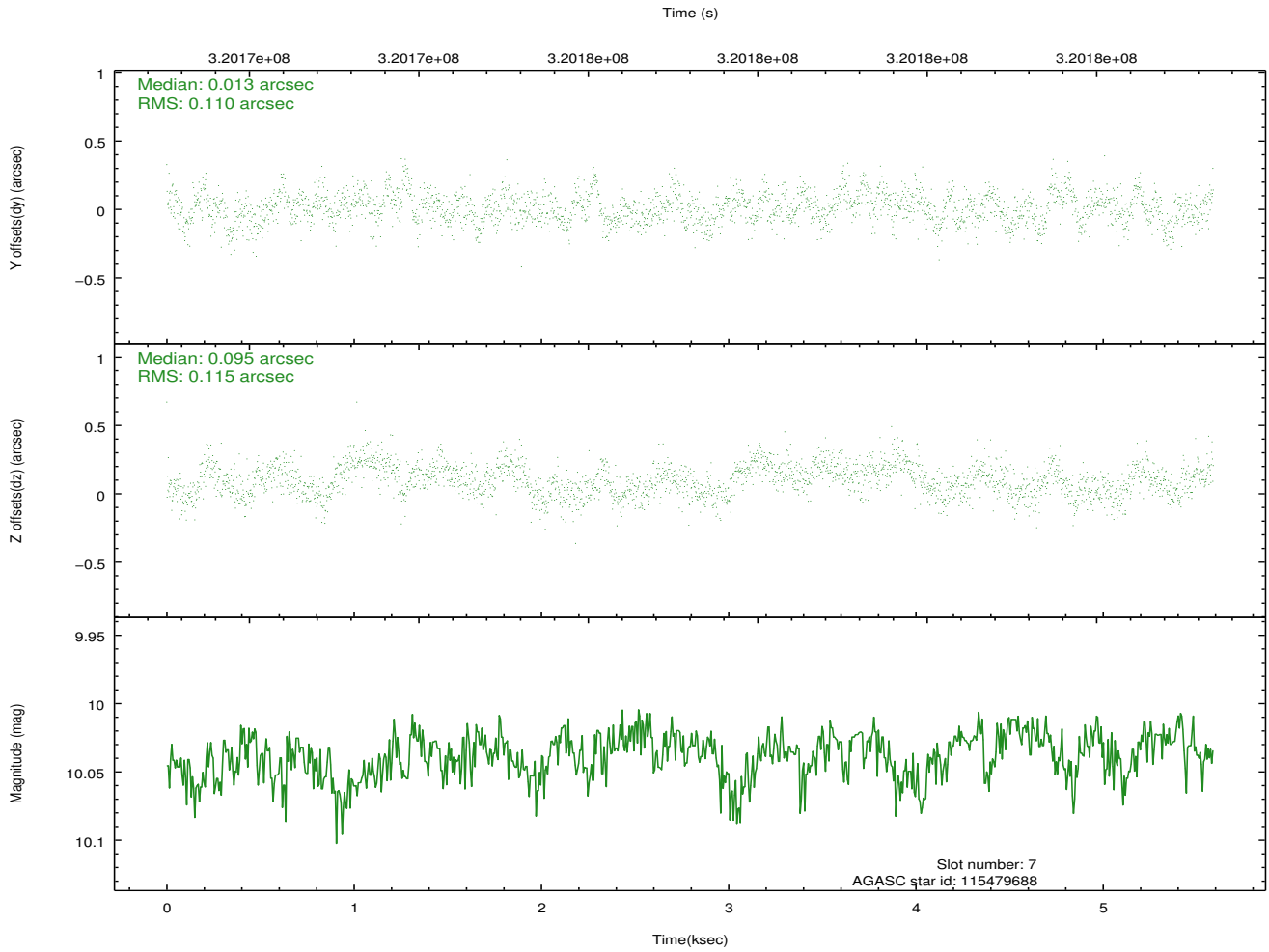
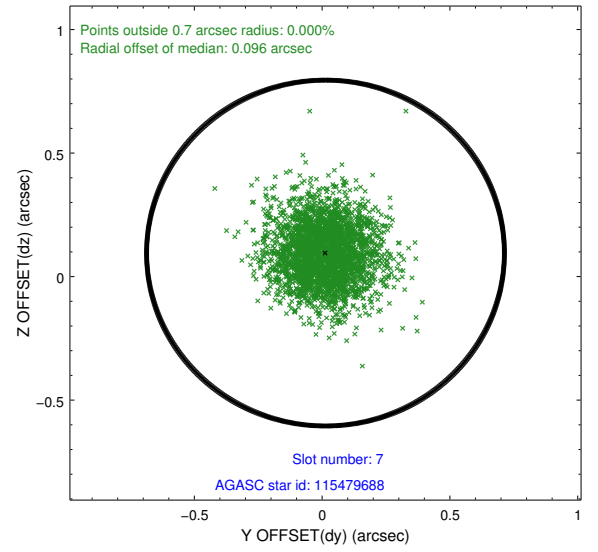
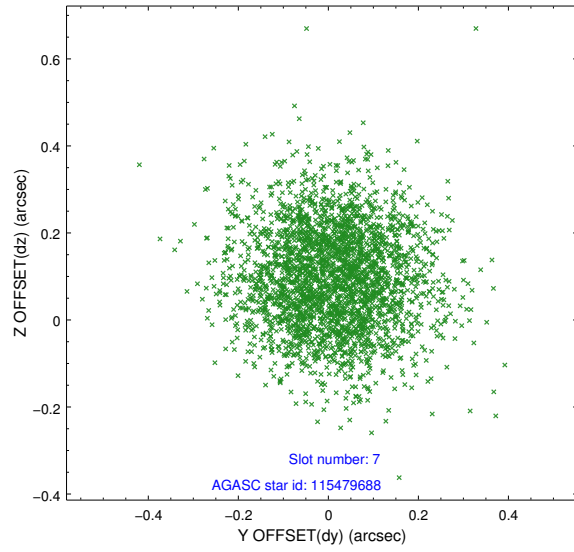
2.4.3 Slot 5



2.4.4 Slot 6

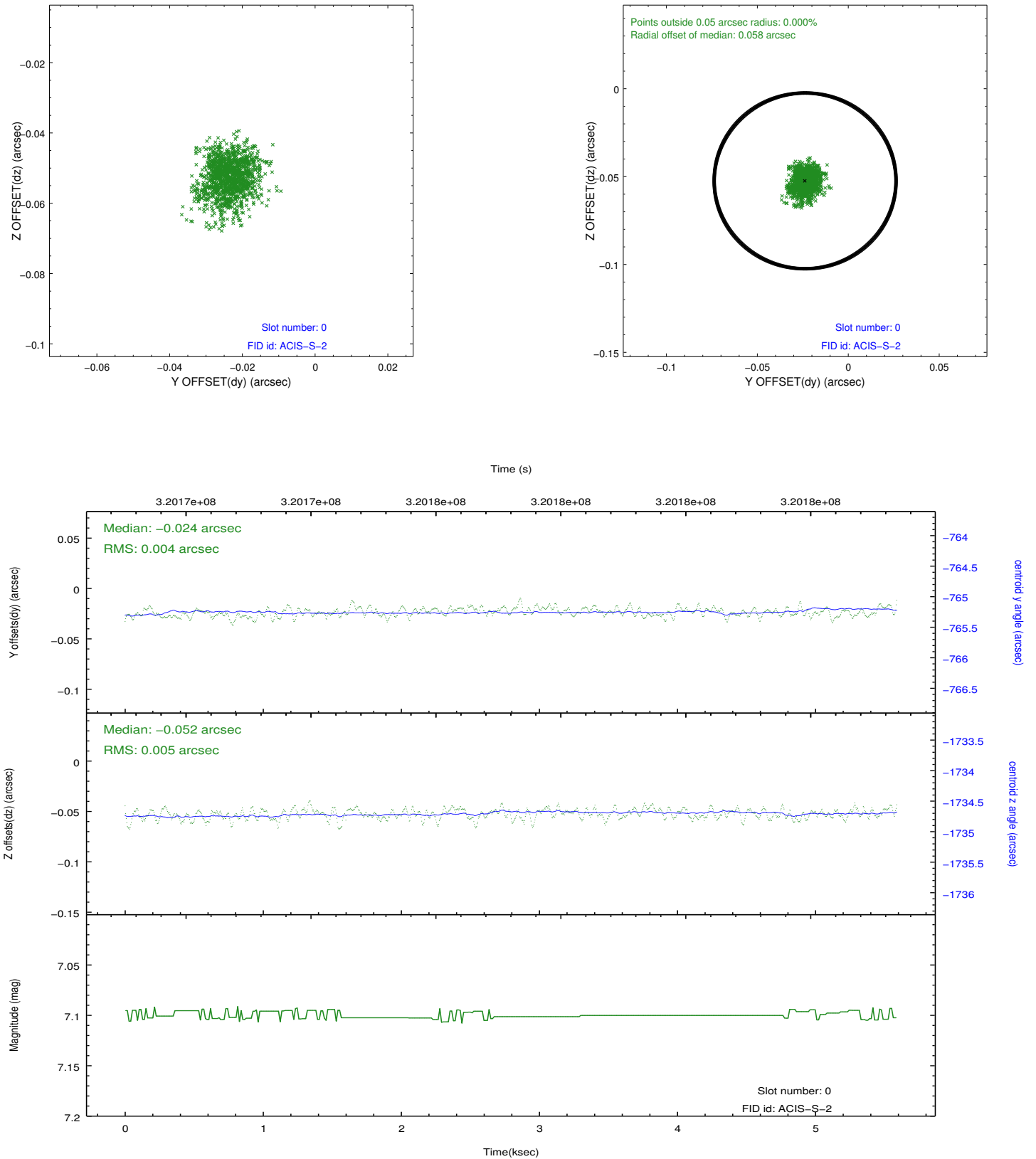


2.4.5 Slot 7

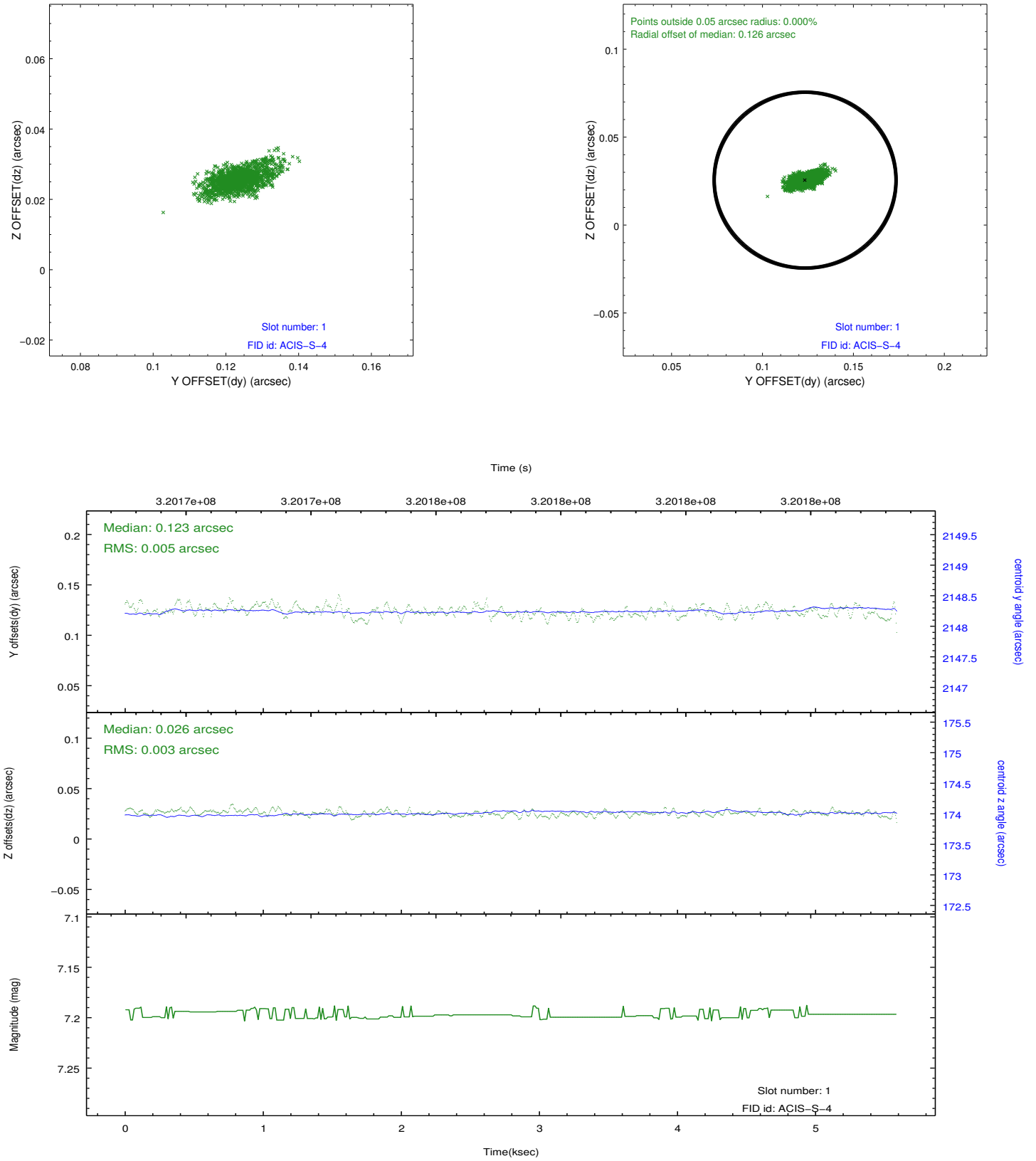


2.5 FID Slots

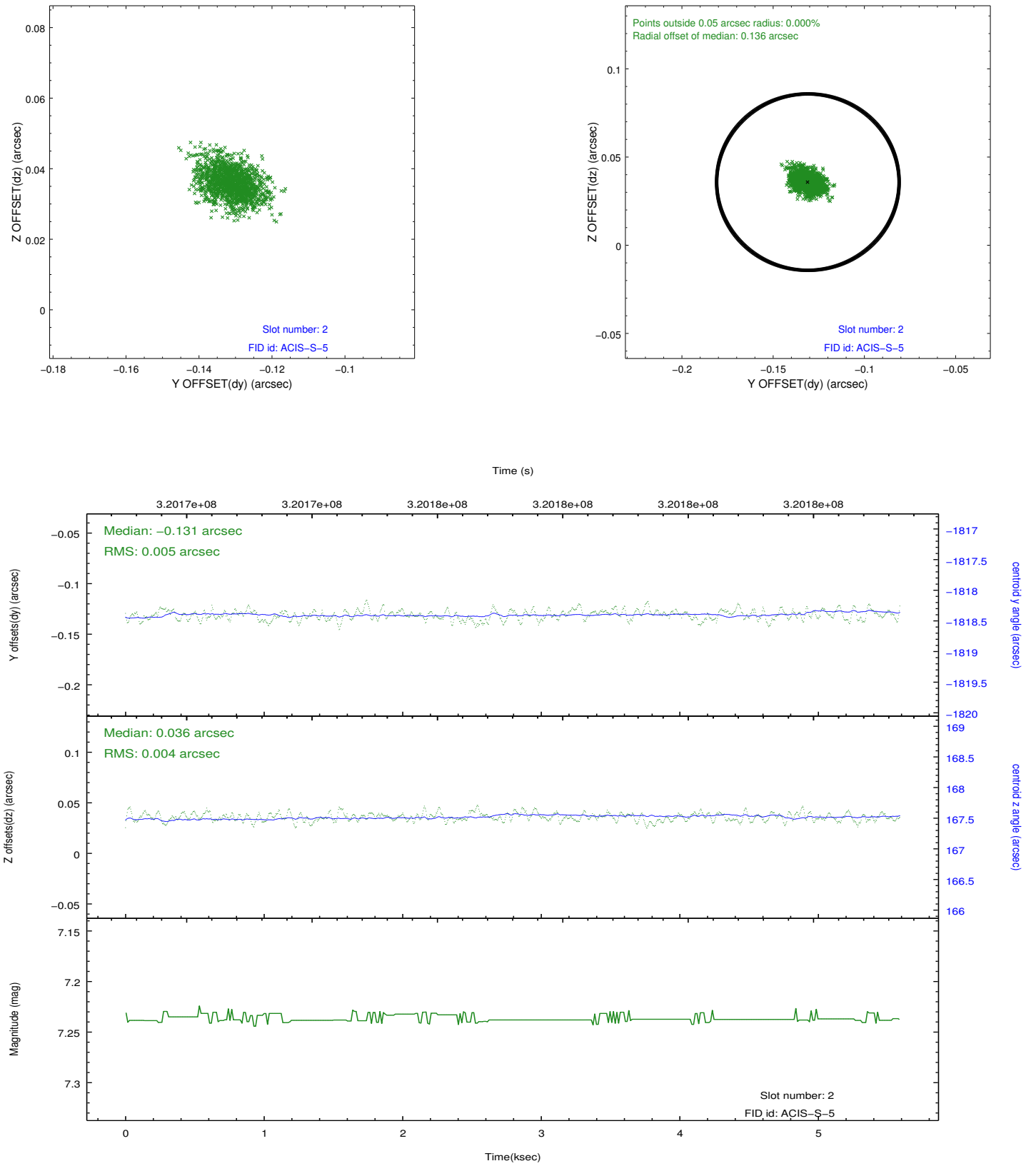
2.5.1 Slot 0



2.5.2 Slot 1



2.5.3 Slot 2



A Summary

A.1 Status

V&V Scientist	Jen Lauer
V&V Date (YYYY-MM-DD)	2012.05.13
V&V Edition	1
V&V Disposition and Status	OK
V&V Charge Time	5.15839998

A.2 Comments

Joint Proposal: Spitzer