

V&V Reference Report

L2 ASCDS Version : 8.4.3

Observation 6553 - L2 Version 4
Chandra X-Ray Center

L2 Processing Date : Aug 10 2012

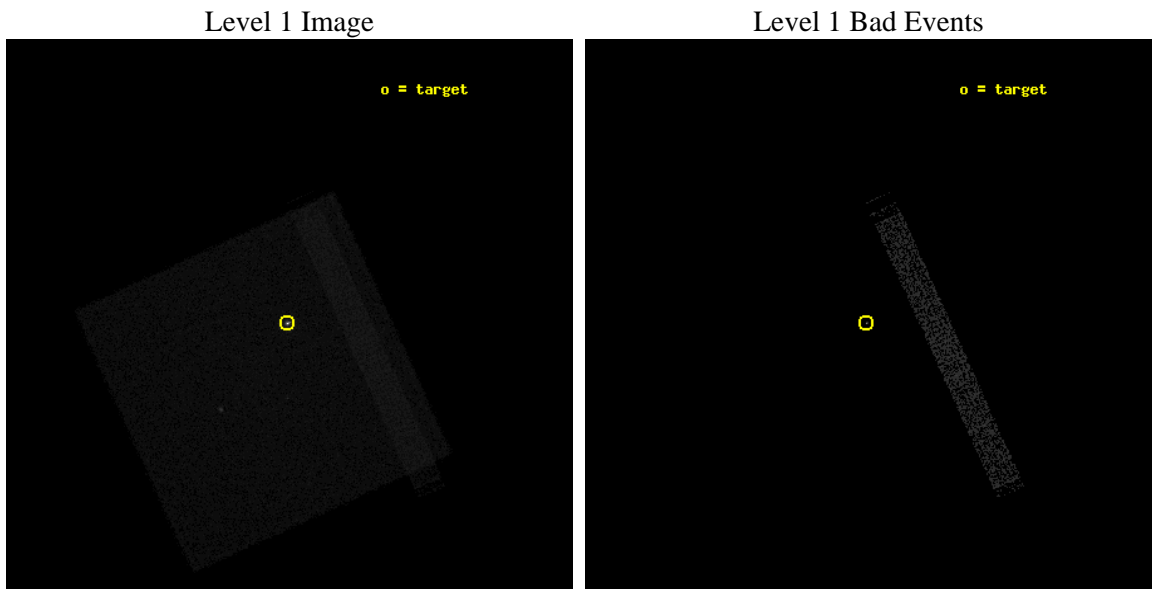
Contents

1	Front	2
2	OBI	3
2.1	OBI	3
2.1.1	Images	3
2.1.2	Parameters	4
2.1.3	Events	4
2.2	Compared Parameters	5
2.3	Aspect	6
2.4	Star Slots	9
2.4.1	Slot 3	9
2.4.2	Slot 4	10
2.4.3	Slot 5	11
2.4.4	Slot 6	12
2.4.5	Slot 7	13
2.5	FID Slots	14
2.5.1	Slot 0	14
2.5.2	Slot 1	15
2.5.3	Slot 2	16
A	Summary	17
A.1	Status	17
A.2	Comments	17

2 OBI

2.1 OBI

2.1.1 Images



2.1.2 Parameters

obi_num	0	Obi number	sched_exp_time	5000.000000	[s] Scheduled observation exposure time
ascdsver	8.4.5	Processing system revision	ontime	5187.5252400935	[s]
caldsver	4.5.1.1	 	l1events	484248	Number of level 1 events
date	2012-08-10T19:28:41	Date and time of file creation			
revision	4	Processing version of data			

2.1.3 Events

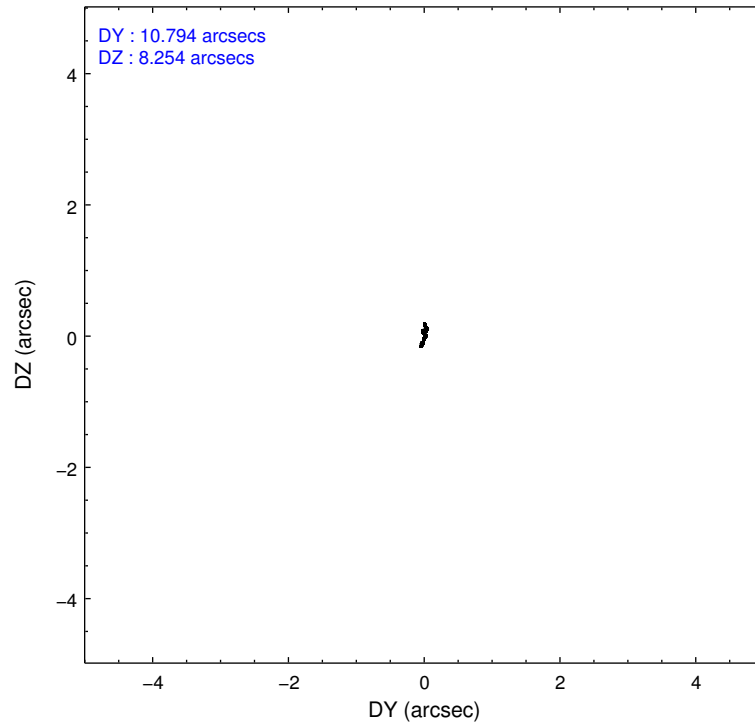
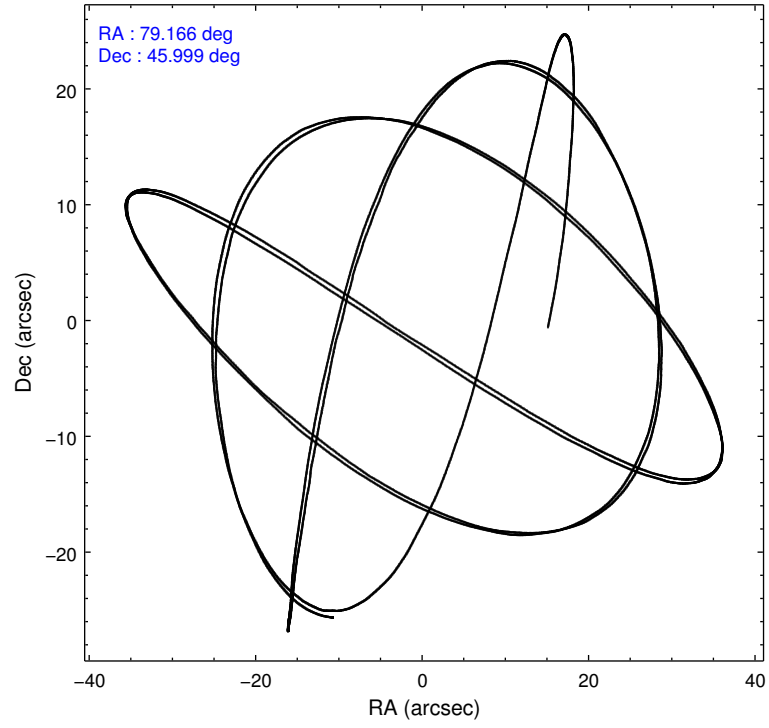
Level 1 Events

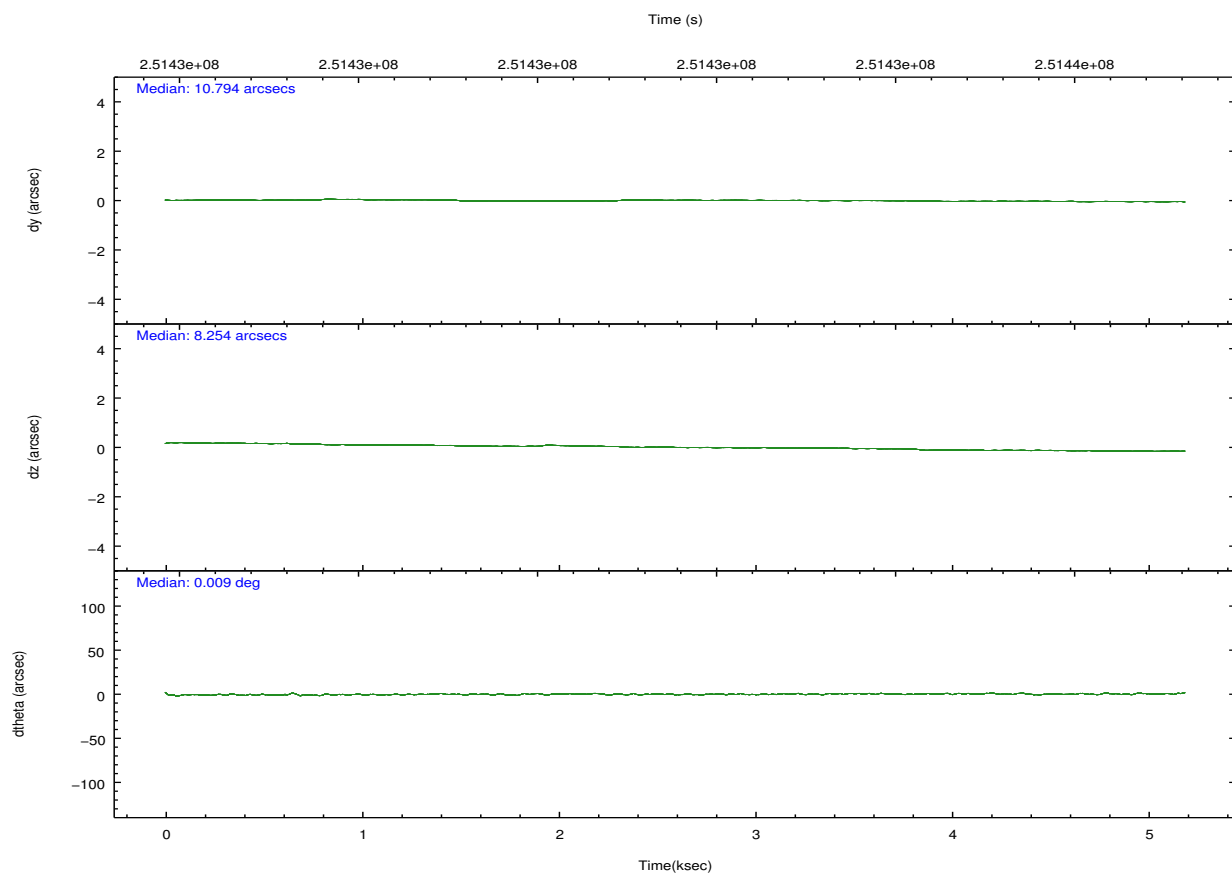
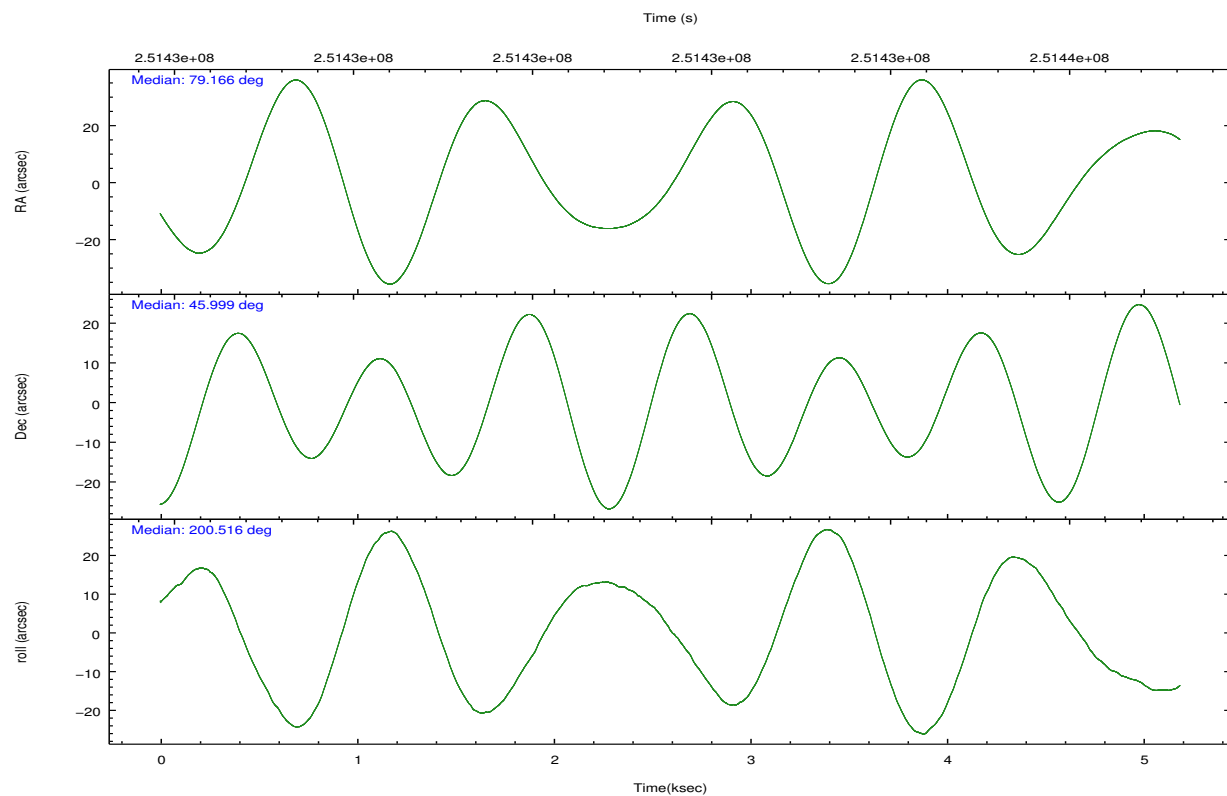
	segment 0
level 1 events	484248
rejected events	47428
rejected %	9%

2.2 Compared Parameters

Parameter	Planned	Actual	Parameter	Planned	Actual
Instrument	HRC	HRC	Obspar format version number	7	7
Detector	HRC-I	HRC-I	Obspar file type	PREDICTED	ACTUAL
Grating	NONE	NONE	Obspar update status	NONE	UPDATED
Data mode	OBSERVING	OBSERVING			
Observation mode	POINTING	POINTING			
[deg] Pointing RA	79.190615	79.16650036745912			
[deg] Pointing Dec	46.019467	45.99829615521124			
[deg] Pointing Roll	200.599825	200.5217026627206			
[mm] SIM focus pos	-1.040293	-1.038866356238299			
[mm] SIM defocus	0	0.001426264420575141			
[mm] SIM translation stage pos	105.985494	105.9859329066587			
[mm] SIM translation stage offset	21	20.99955598494287			
[s] Observation start time (MET)	251430359.184000	251429983.31822			
Observation start date	2005-12-20T01:44:55	2005-12-20T01:39:43			
[s] Observation end time (MET)	251435359.184000	251436463.88102			
Observation end date	2005-12-20T03:08:15	2005-12-20T03:27:43			

2.3 Aspect



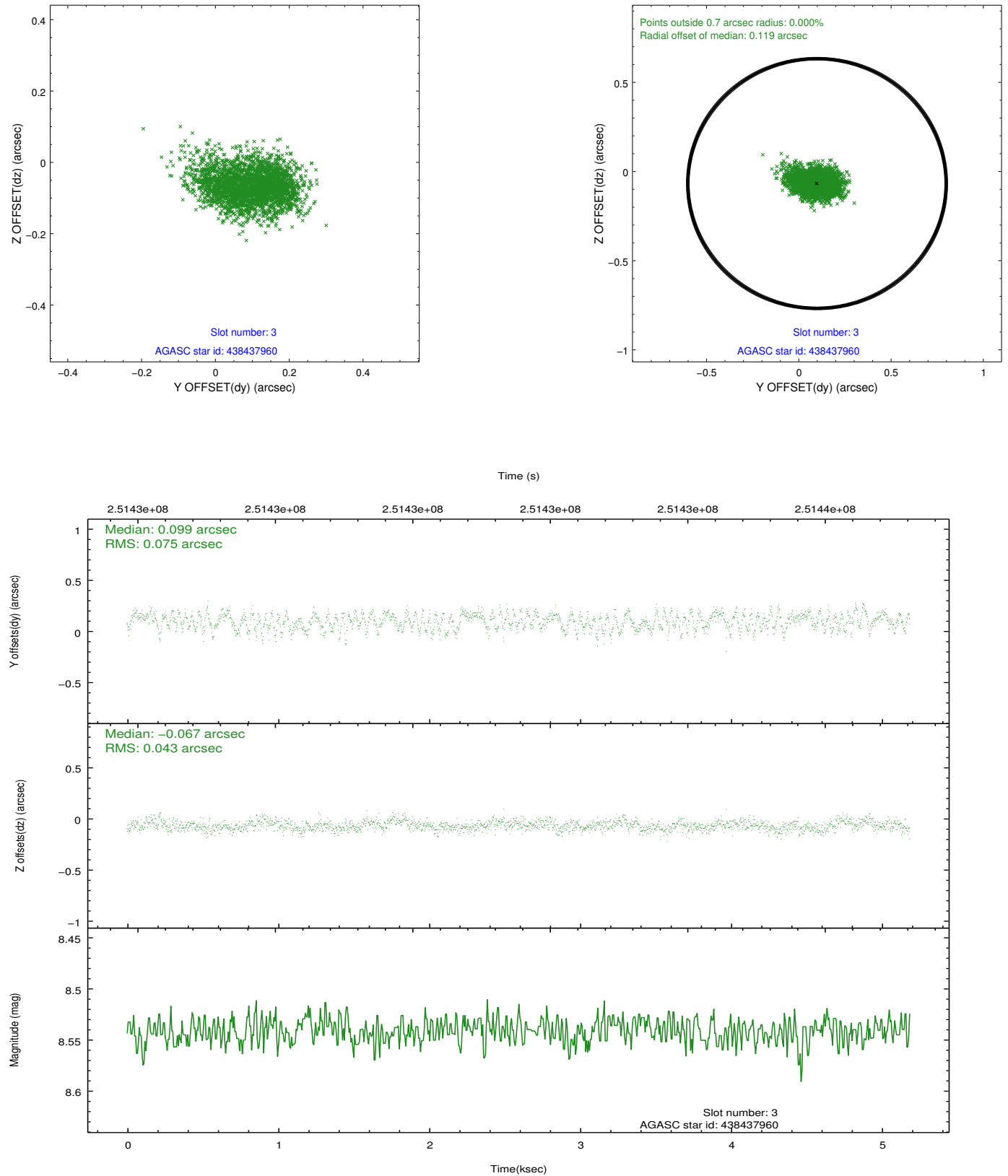


Slot Statistics

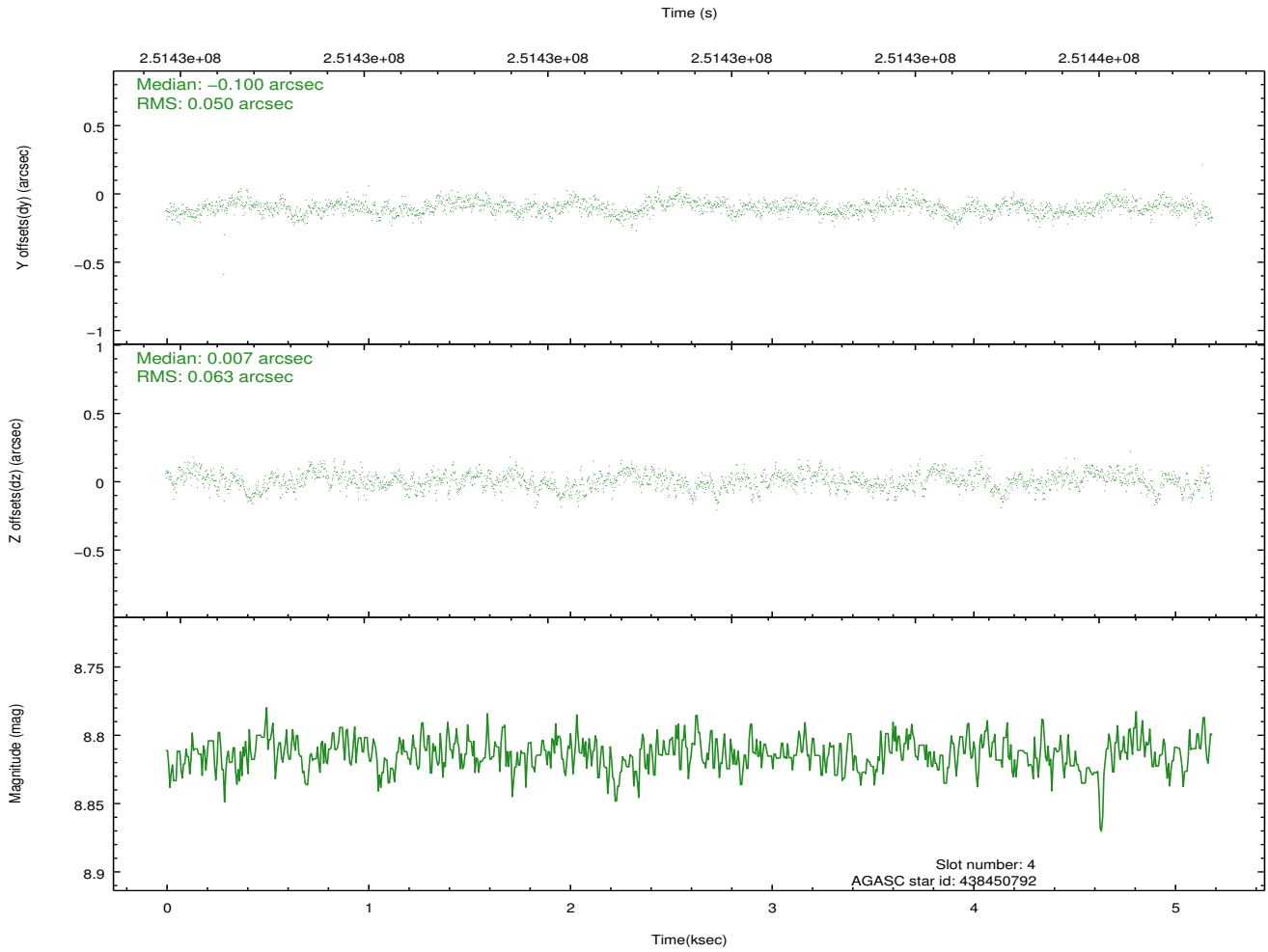
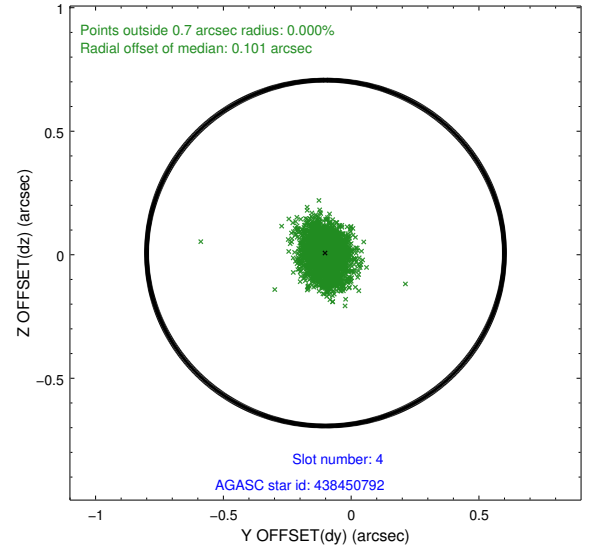
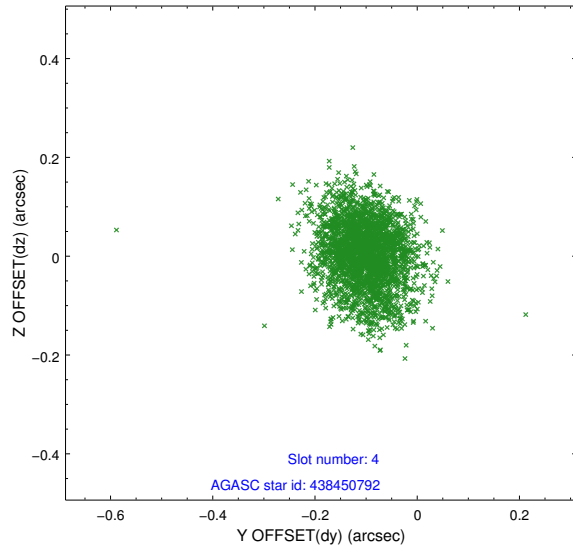
slot	status	id	mag	n_pts	med_dy	med_dz	dr1	dr2	ra	dec	mean_y	mean_z
0	FID	HRC-I-1	6.96	1266	-0.033	0.152	0.009	0.015	0.000000	0.000000	-765.69	-866.58
1	FID	HRC-I-2	7.06	1266	-0.004	0.064	0.007	0.011	0.000000	0.000000	845.14	-866.64
2	FID	HRC-I-3	7.07	1266	0.157	-0.303	0.008	0.017	0.000000	0.000000	-1194.53	1439.13
3	GUIDE	438437960	8.54	2532	0.099	-0.067	0.091	0.149	78.069023	46.438843	2067.58	-2410.12
4	GUIDE	438450792	8.81	2529	-0.100	0.007	0.084	0.140	78.654240	46.382628	786.96	-1696.00
5	GUIDE	440149808	8.42	2532	0.019	0.009	0.073	0.120	78.873930	46.405955	246.89	-1580.40
6	GUIDE	440150048	7.14	2532	-0.033	0.005	0.062	0.101	79.112838	46.416060	-320.86	-1404.41
7	GUIDE	438460832	8.99	2530	0.022	0.049	0.090	0.142	78.414614	45.554782	2416.77	869.40

2.4 Star Slots

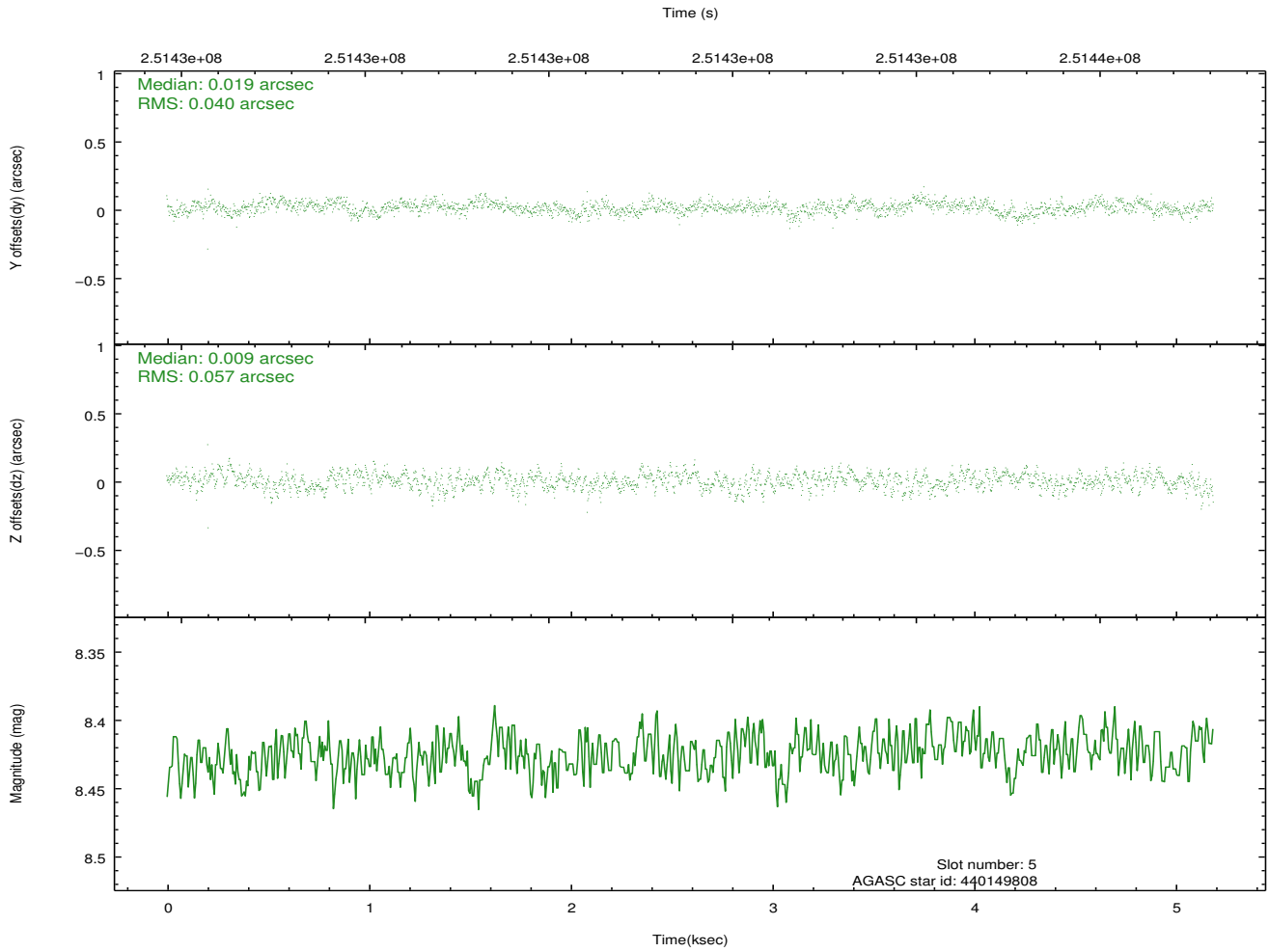
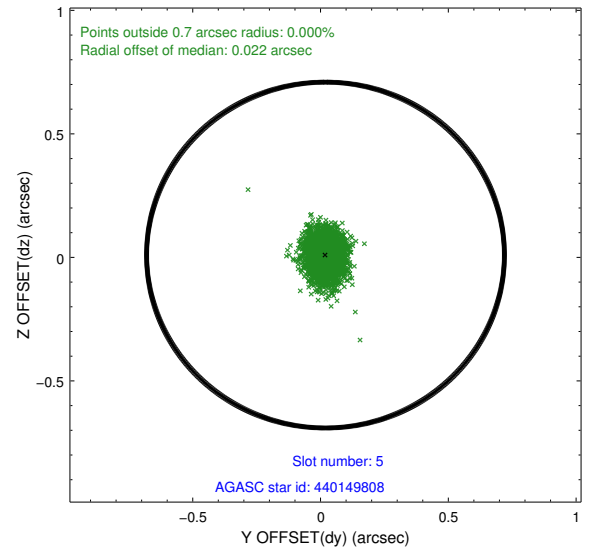
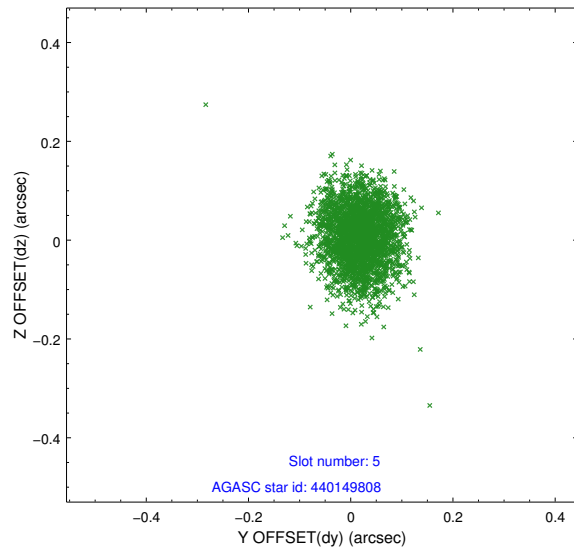
2.4.1 Slot 3



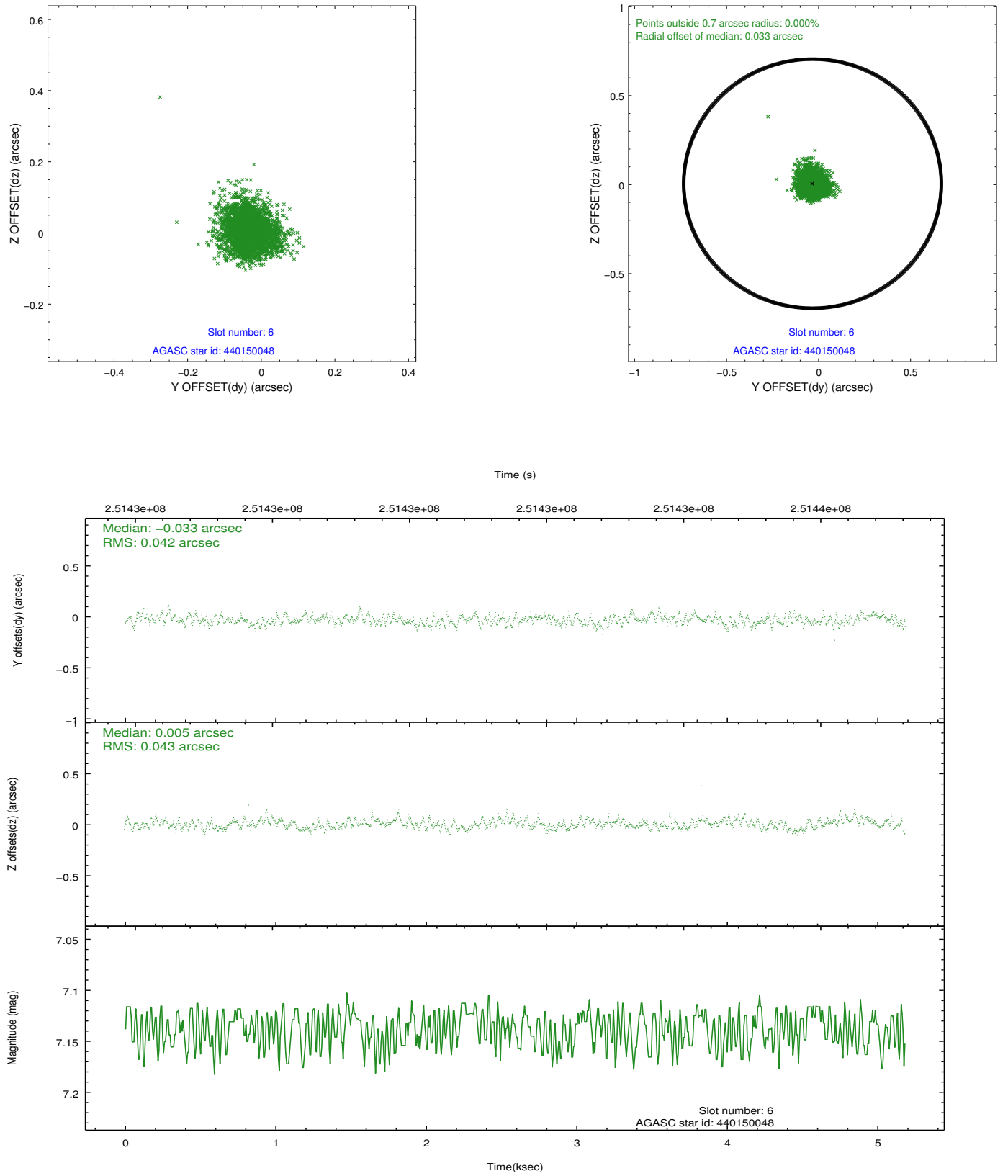
2.4.2 Slot 4



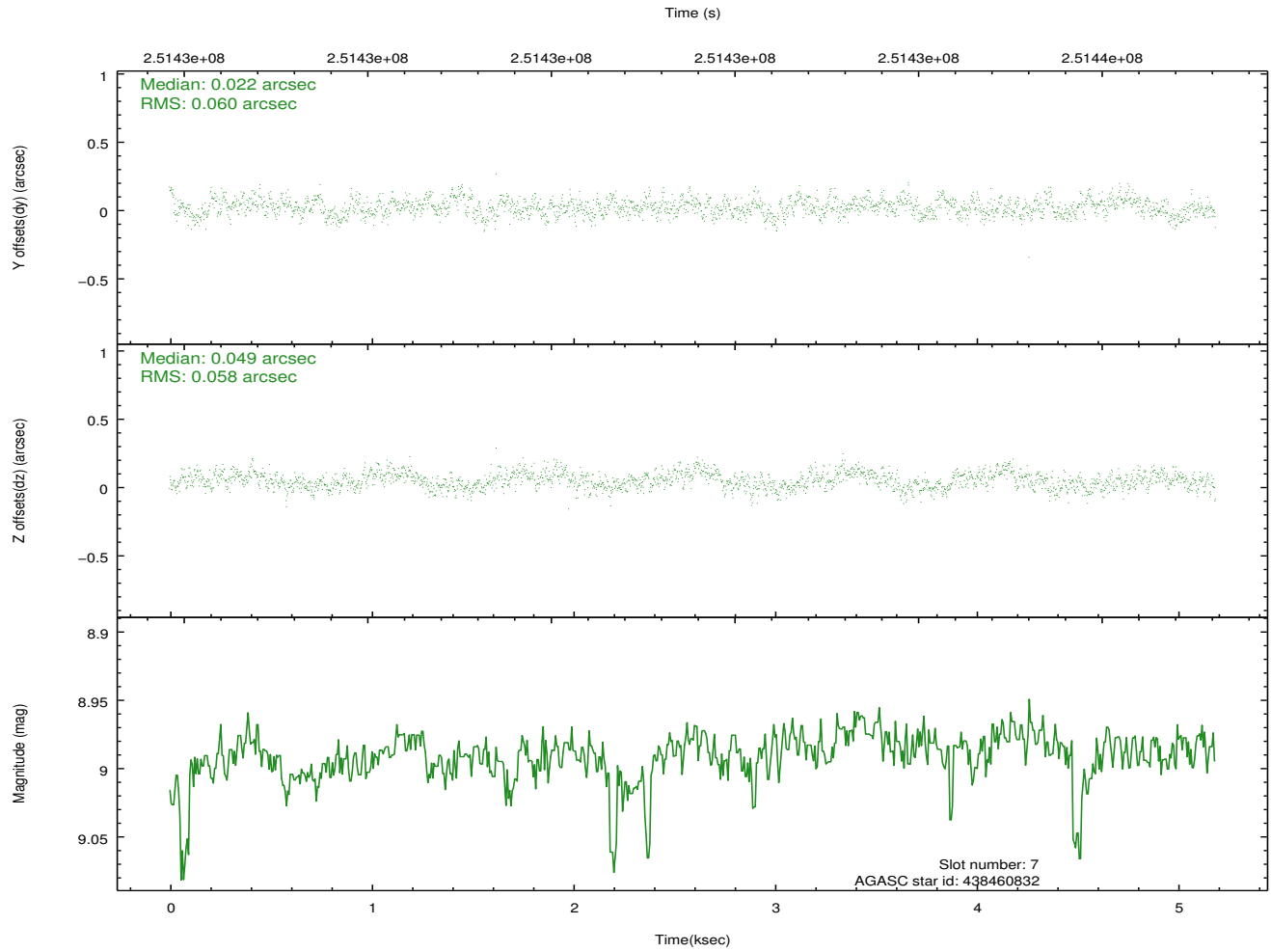
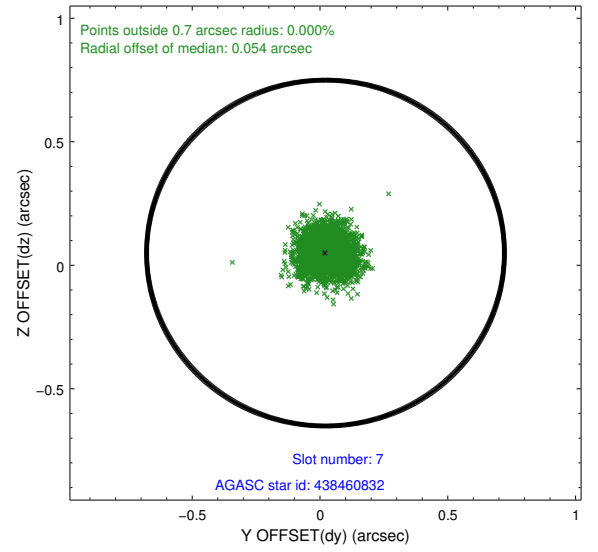
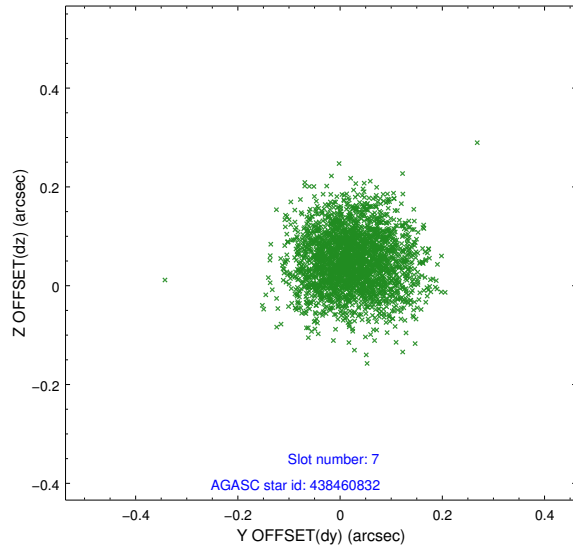
2.4.3 Slot 5



2.4.4 Slot 6

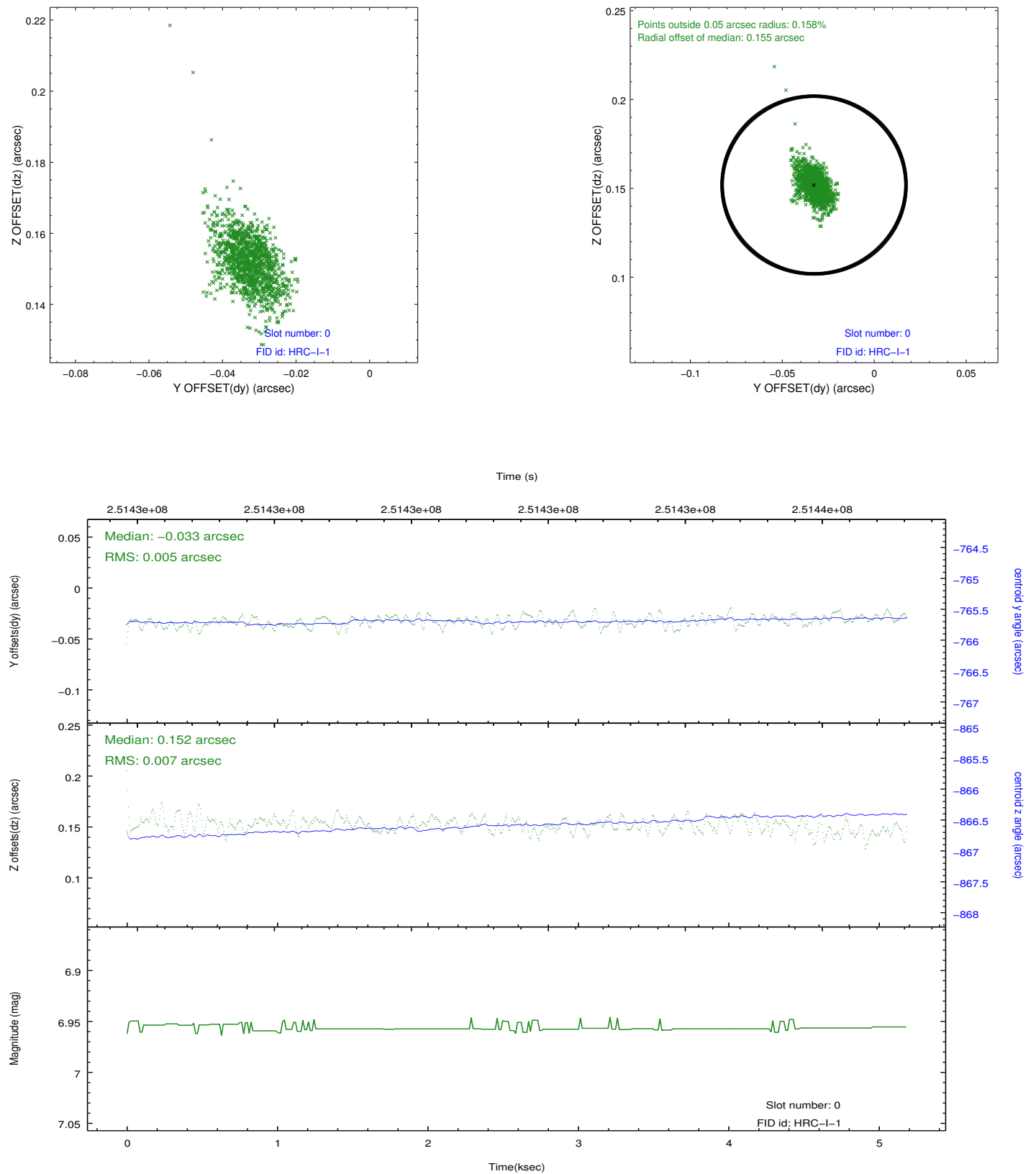


2.4.5 Slot 7

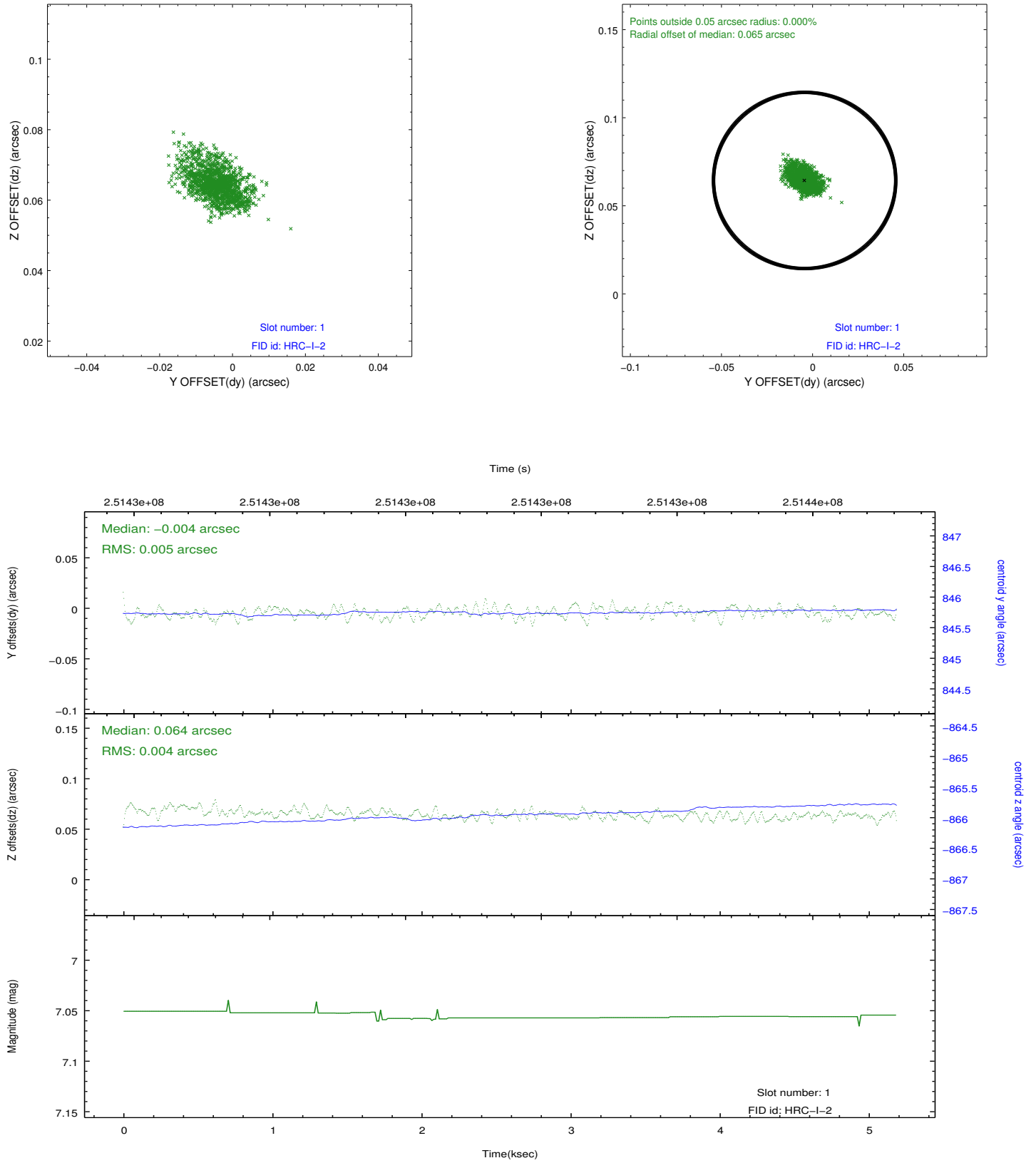


2.5 FID Slots

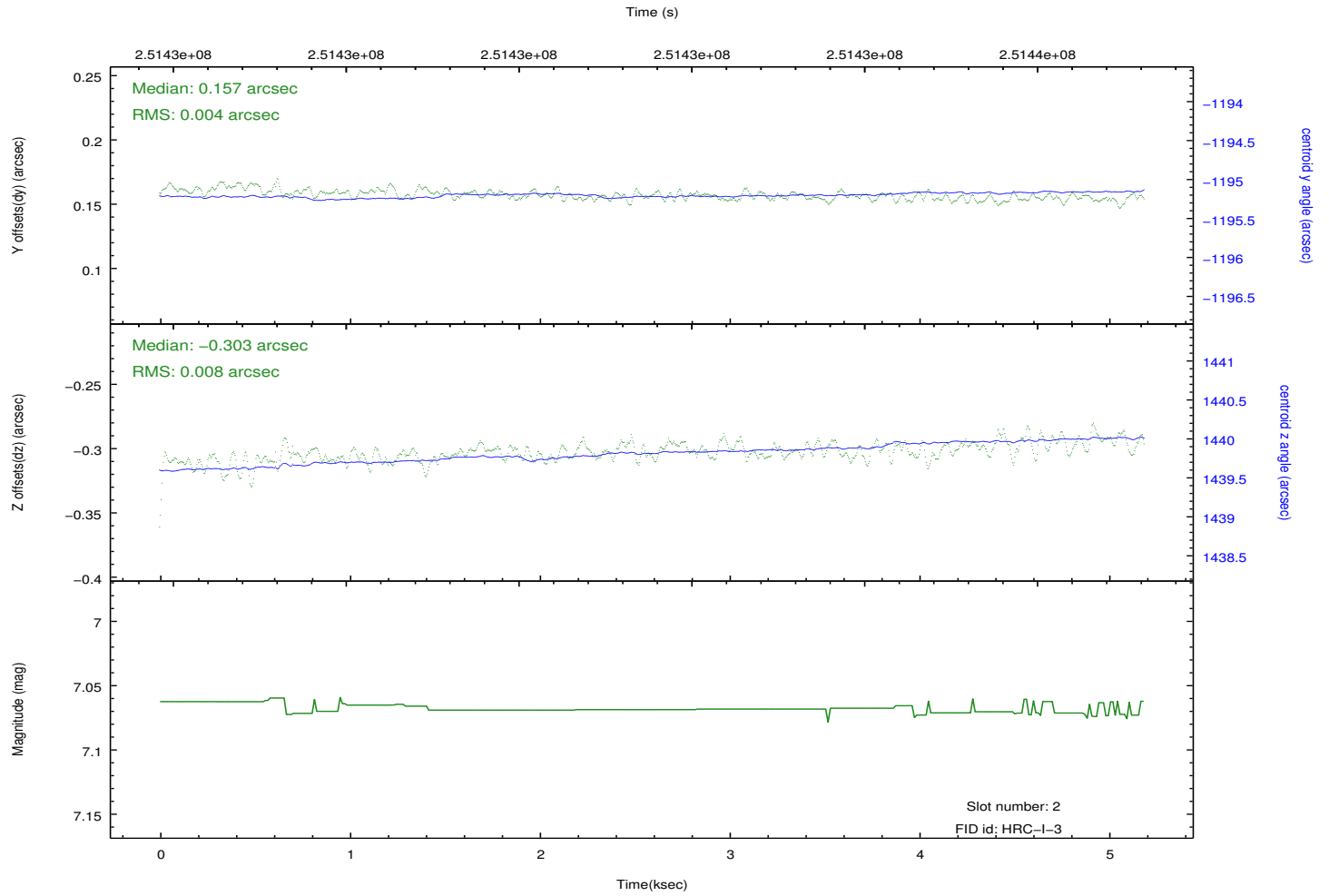
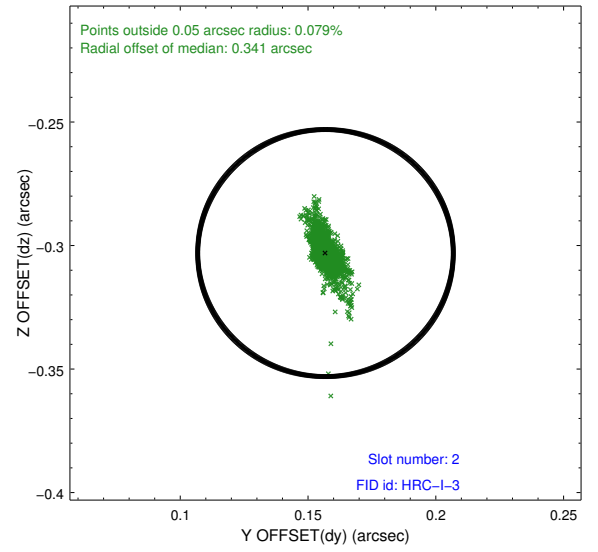
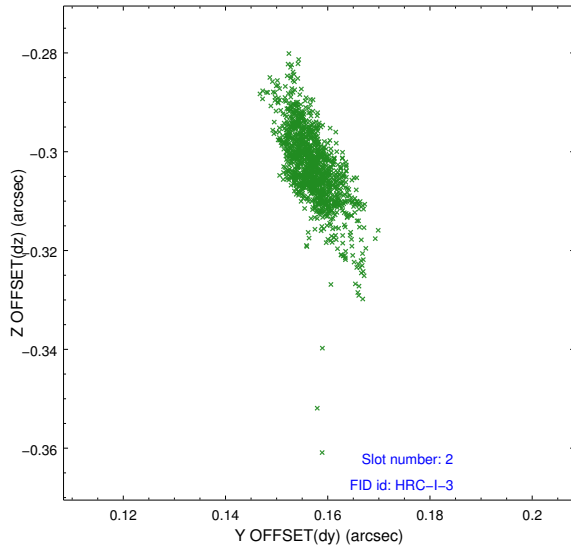
2.5.1 Slot 0



2.5.2 Slot 1



2.5.3 Slot 2



A Summary

A.1 Status

V&V Scientist	Jen Lauer
V&V Date (YYYY-MM-DD)	2012.08.12
V&V Edition	1
V&V Disposition and Status	OK
V&V Charge Time	5.187525

A.2 Comments