

V&V Reference Report

L2 ASCDS Version : 8.5.1.1

Observation 6343 - L2 Version 4
Chandra X-Ray Center

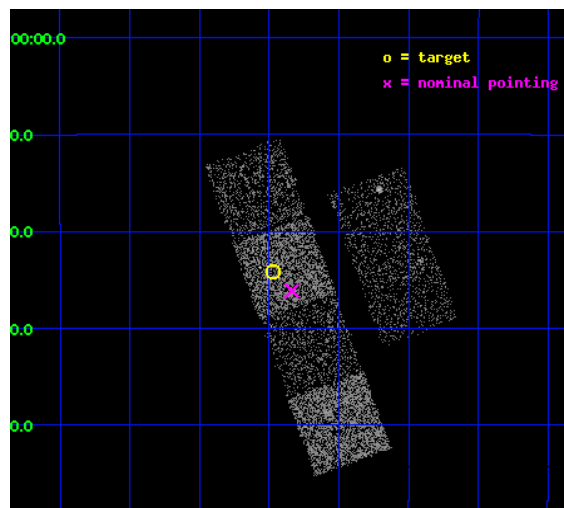
L2 Processing Date : Jan 30 2013

Contents

1	Front	2
2	OBI	3
2.1	OBI	3
2.1.1	Images	3
2.1.2	Bias	3
2.1.3	Parameters	4
2.1.4	Events	4
2.2	Compared Parameters	5
2.3	Aspect	6
2.4	Star Slots	9
2.4.1	Slot 3	9
2.4.2	Slot 5	10
2.4.3	Slot 6	11
2.4.4	Slot 7	12
2.5	FID Slots	13
2.5.1	Slot 0	13
2.5.2	Slot 1	14
2.5.3	Slot 2	15
A	Summary	16
A.1	Status	16
A.2	Comments	16

1 Front

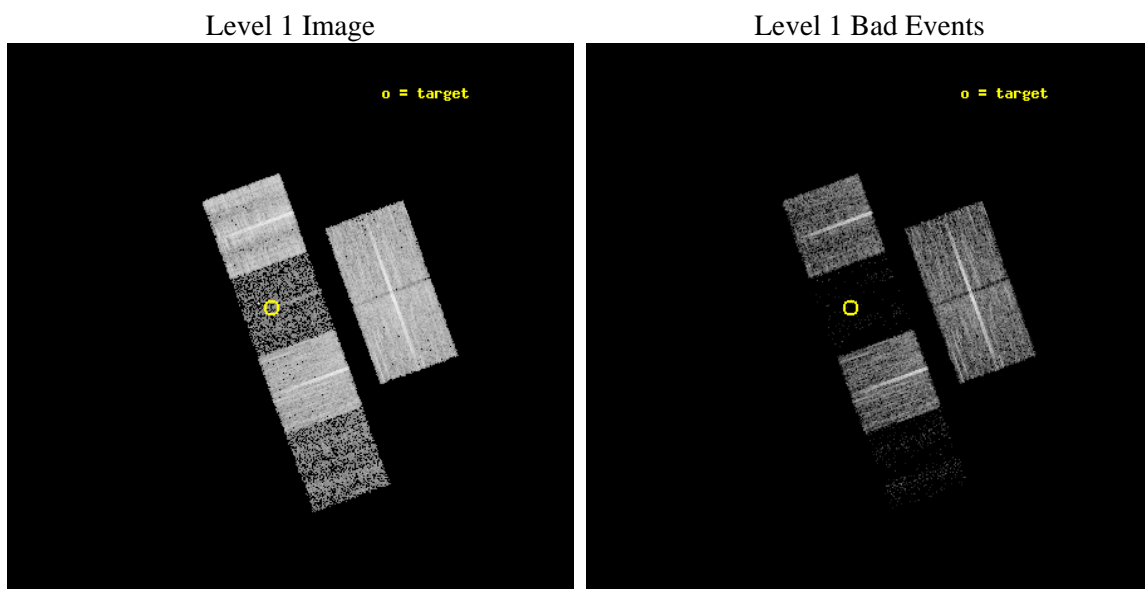
seq_num	100057	Sequence number
obs_id	6343	Observation id
title	Comet 9P/Tempel 1 During the Deep Impact Encounter	Proposal title
observer	Dr. Carey Lisse	Principal investigator
object	9P/Tempel 1	Source name
dtcycle	0	
cycle	P	events from which exps? Prim/Second/Both
ra_targ	209.242193	Observer's specified target RA [deg]
dec_targ	-13.402081	Observer's specified target Dec [deg]
ra_nom	209.20943674359	Nominal RA [deg]
dec_nom	-13.436026846241	Nominal Dec [deg]
roll_nom	250.11667288997	Nominal Roll [deg]
revision	4	Processing version of data
ontime	8502.3999683261	Sum of GTIs [s]
livetime	8394.7374603965	Livetime [s]
ontime2	8502.3999683261	Sum of GTIs [s]
ontime3	8502.3999683261	Sum of GTIs [s]
ontime5	8502.3999683261	Sum of GTIs [s]
ontime6	8499.1589980423	Sum of GTIs [s]
ontime7	8502.3999683261	Sum of GTIs [s]
ontime8	8502.3999683261	Sum of GTIs [s]
l2events	11744	Number of level 2 events



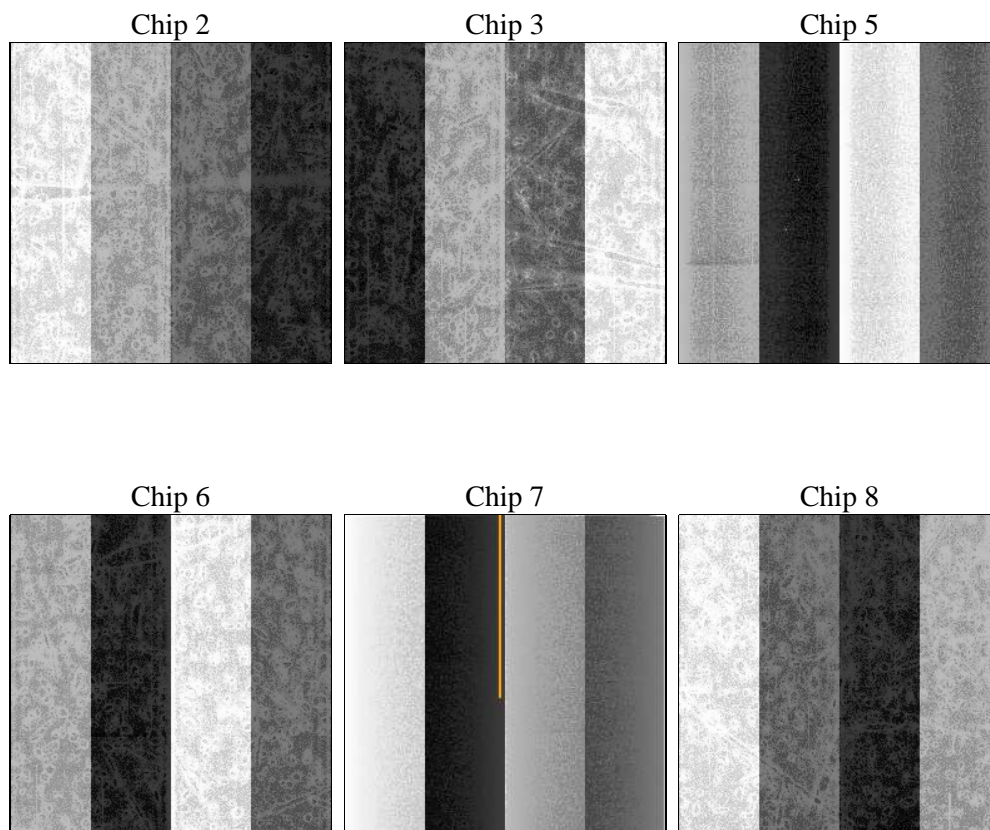
2 OBI

2.1 OBI

2.1.1 Images



2.1.2 Bias



2.1.3 Parameters

obi_num	1	Obi number	sched_exp_time	8325.000000	[s] Scheduled observation exposure time
ascdsver	8.5.1.1	Processing system revision	ontime	8502.3999683261	Sum of GTIs [s]
caldsver	4.5.5	 	ontime2	8502.3999683261	Sum of GTIs [s]
date	2013-01-30T23:00:23	Date and time of file creation	ontime3	8502.3999683261	Sum of GTIs [s]
revision	4	Processing version of data	ontime5	8502.3999683261	Sum of GTIs [s]
			ontime6	8499.1589980423	Sum of GTIs [s]
			ontime7	8502.3999683261	Sum of GTIs [s]
			ontime8	8502.3999683261	Sum of GTIs [s]
			l1events	175762	Number of level 1 events

2.1.4 Events

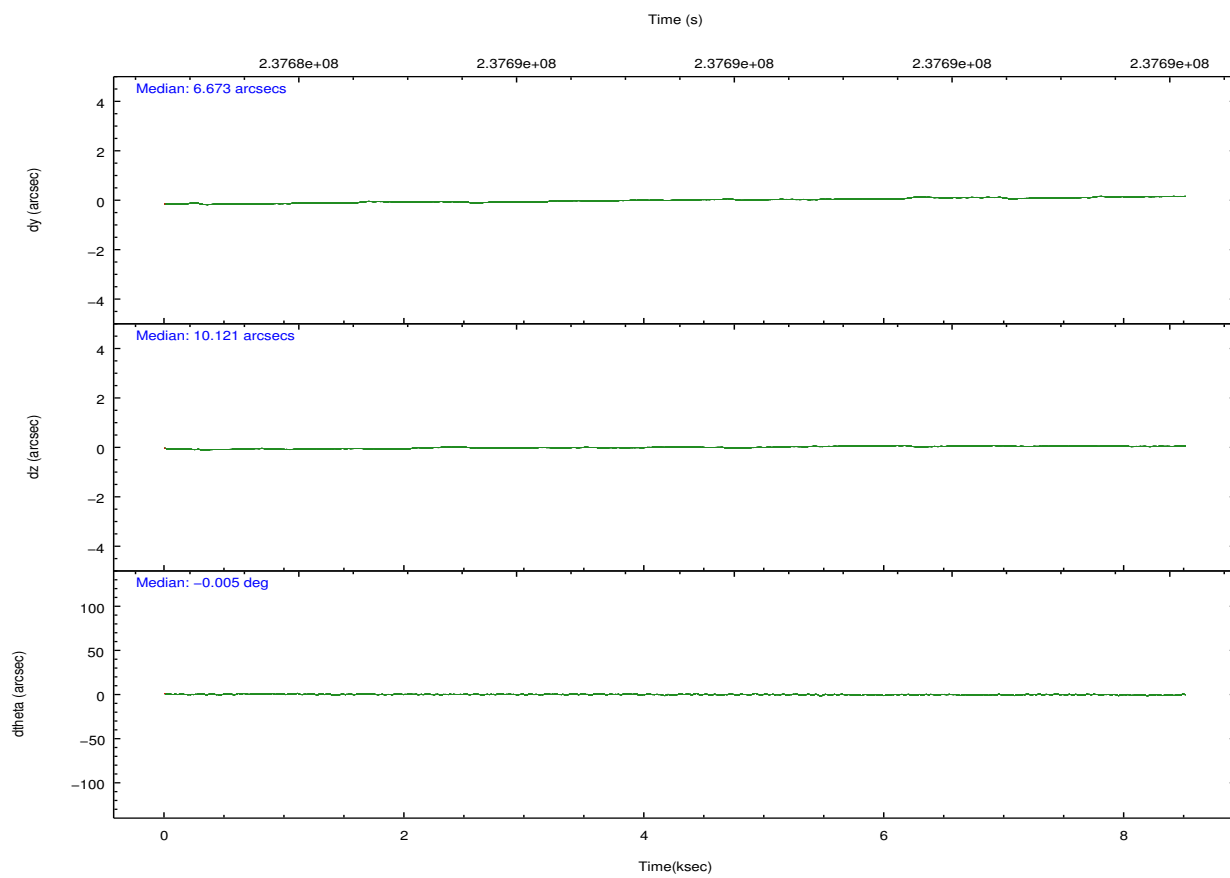
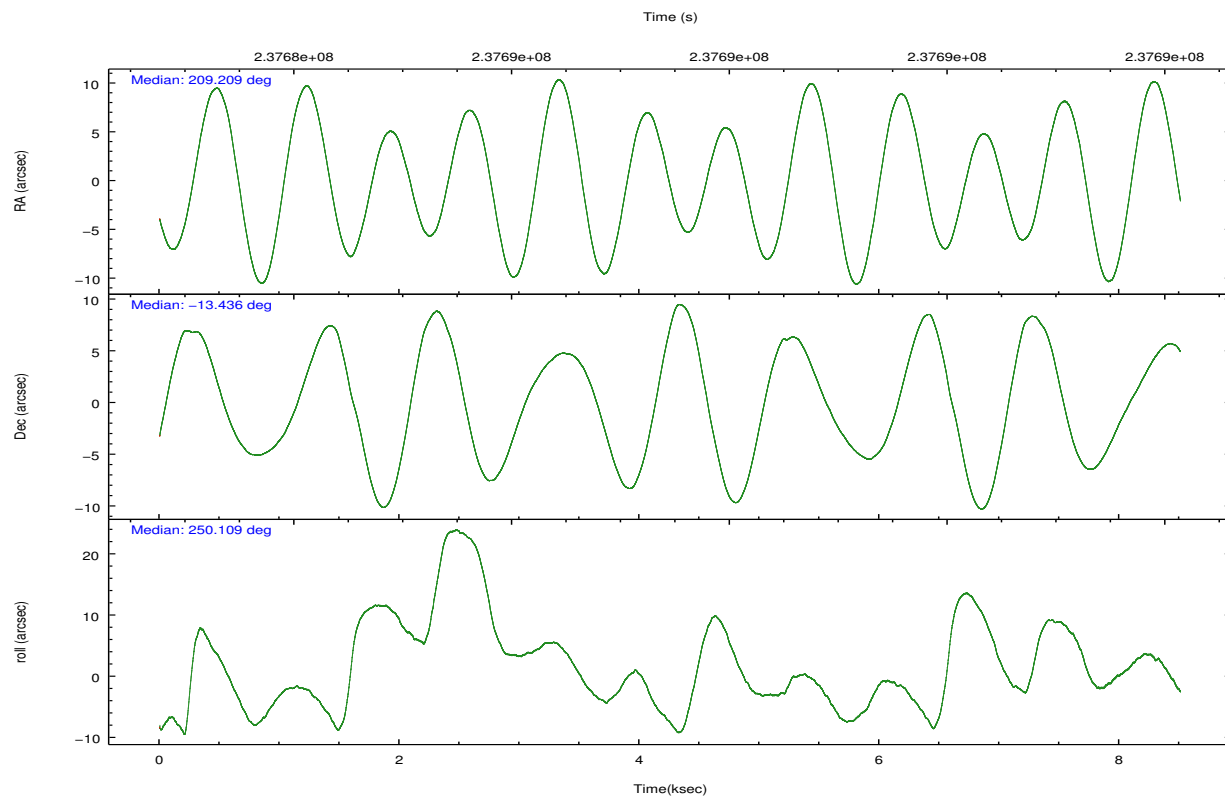
	ccd 2	ccd 3	ccd 5	ccd 6	ccd 7	ccd 8
level 1 events	42189	36998	6373	36761	4966	48475
rejected events	40139	35744	2131	34976	1049	31592
rejected %	95%	96%	33%	95%	21%	65%

	ccd 2	ccd 3	ccd 5	ccd 6	ccd 7	ccd 8
grade 0 events	842	636	1110	800	1043	4681
	1%	1%	17%	2%	21%	9%
grade 1 events	16	15	52	9	14	31
	0%	0%	0%	0%	0%	0%
grade 2 events	591	159	1681	435	1292	3553
	1%	0%	26%	1%	26%	7%
grade 3 events	198	223	523	231	617	2345
	0%	0%	8%	0%	12%	4%
grade 4 events	265	173	531	250	577	2100
	0%	0%	8%	0%	11%	4%
grade 5 events	43	48	380	24	151	320
	0%	0%	5%	0%	3%	0%
grade 6 events	202	104	494	99	487	4513
	0%	0%	7%	0%	9%	9%
grade 7 events	40032	35640	1602	34913	785	30932
	94%	96%	25%	94%	15%	63%

2.2 Compared Parameters

Parameter	Planned	Actual	Parameter	Planned	Actual
Instrument	ACIS	ACIS	Obspar format version number	7	7
Detector	ACIS-235678	ACIS-235678	Obspar file type	PREDICTED	ACTUAL
Grating	NONE	NONE	Obspar update status	NONE	UPDATED
Data mode	VFAINT	VFAINT	Number of optional ACIS chips dropped	0	0
Observation mode	POINTING	POINTING	On-chip summing requested	N	N
[deg] Pointing RA	209.204116	209.2094367435876	Subarray requested	NONE	NONE
[deg] Pointing Dec	-13.409335	-13.43602684624064	Alternating exposures requested	N	N
[deg] Pointing Roll	249.958804	250.1166728899711	[s] Primary exposure time	0.000000	3.2
[s] Window start time (MET)	237708064.184000	237708064.184000			
[s] Window stop time (MET)	237751264.184000	237751264.184000			
[mm] SIM focus pos	-0.684267	-0.6828225247311905			
[mm] SIM defocus	0	0.001444936568705701			
[mm] SIM translation stage pos	-190.132523	-190.1400660498719			
[mm] SIM translation stage offset	0	0.00754346686406393			
[s] Observation start time (MET)	237683390.184000	237683013.76068			
Observation start date	2005-07-13T23:08:46	2005-07-13T23:03:33			
[s] Observation end time (MET)	237691715.184000	237692695.39863			
Observation end date	2005-07-14T01:27:31	2005-07-14T01:44:55			
Read mode	TIMED	TIMED			

2.3 Aspect

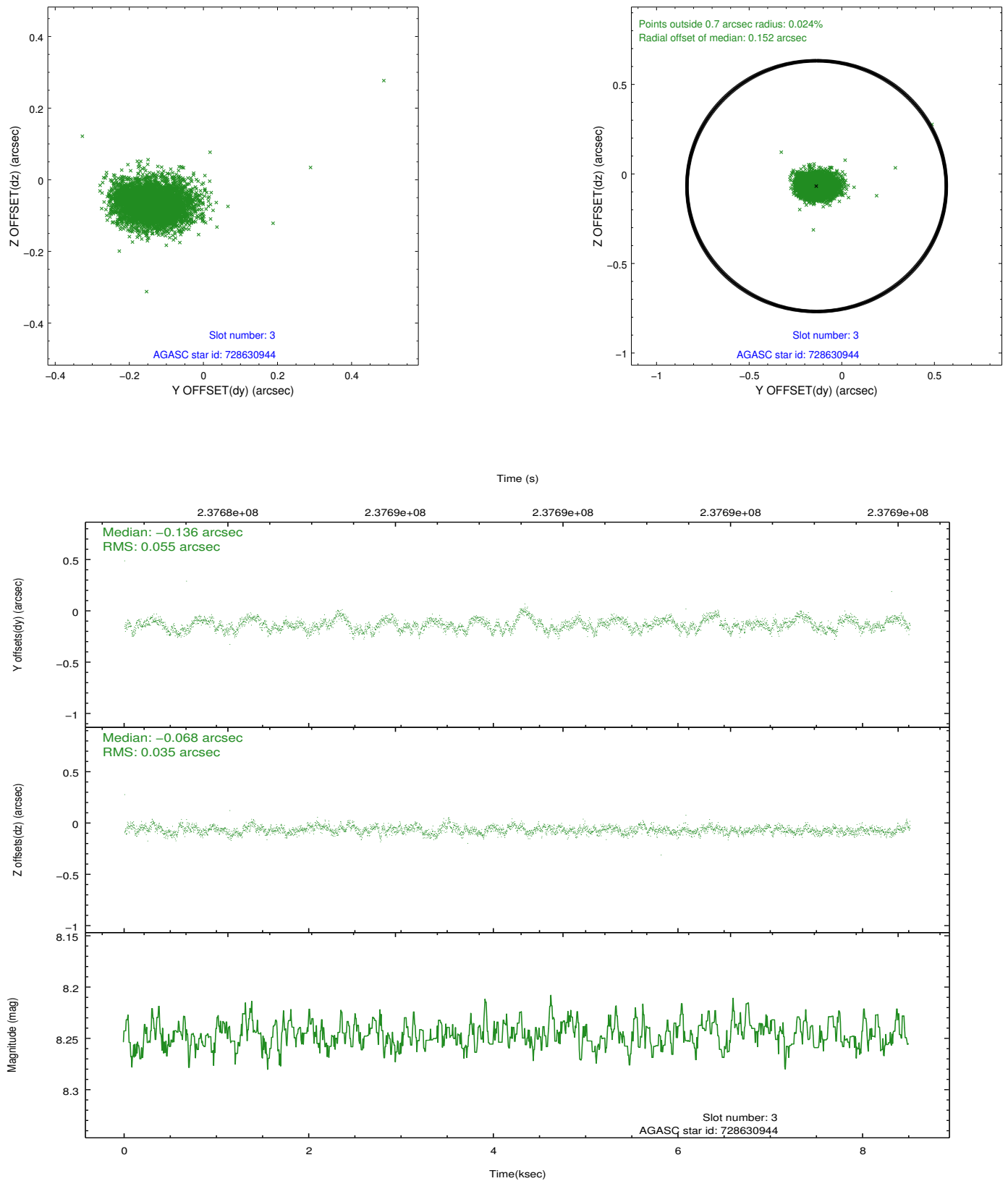


Slot Statistics

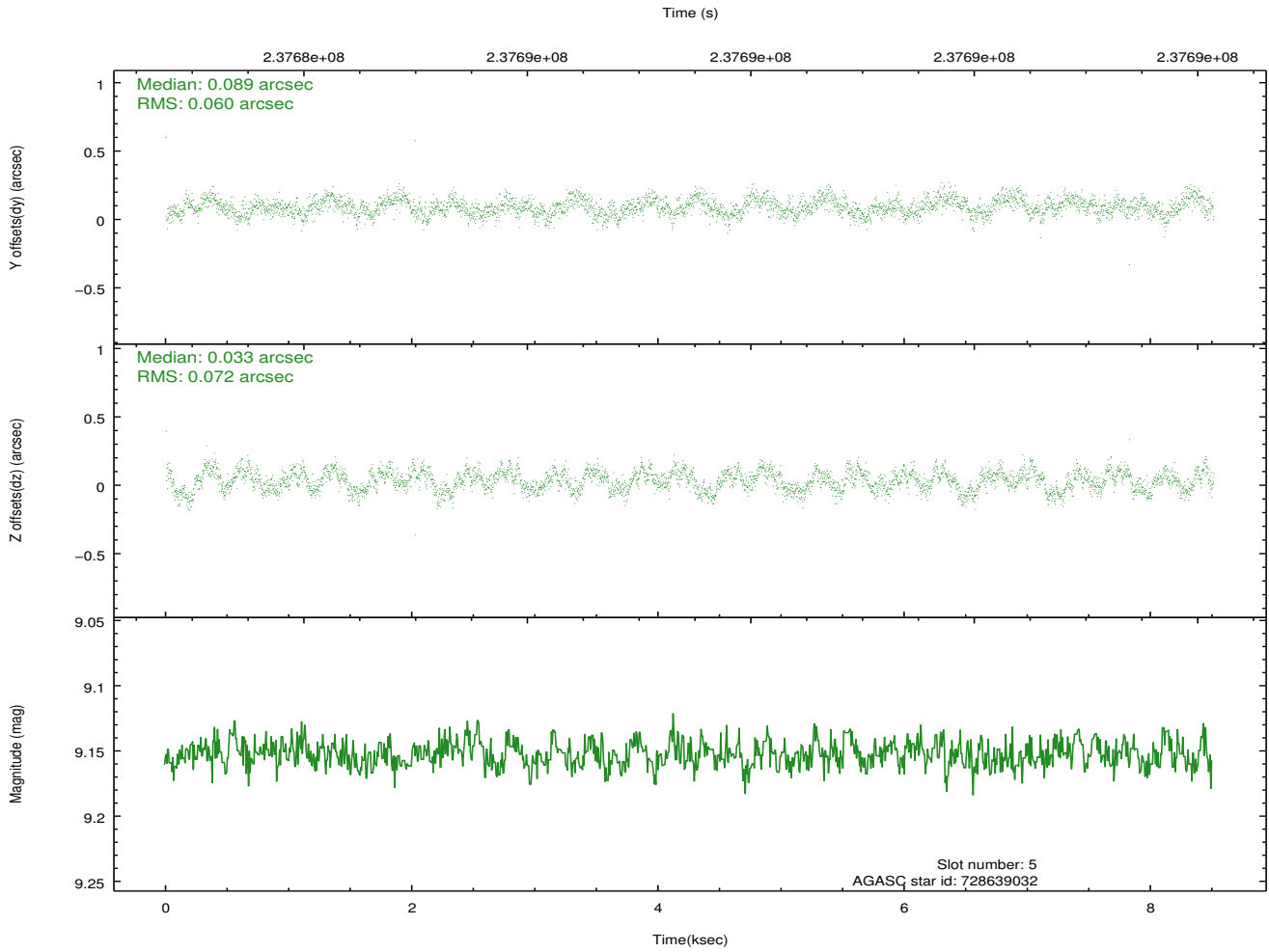
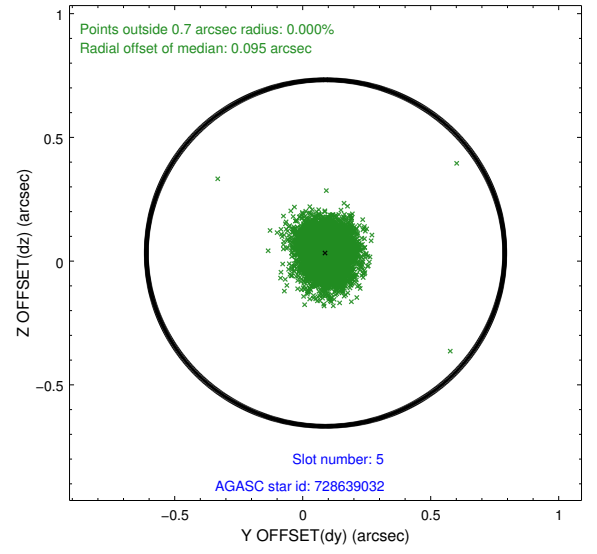
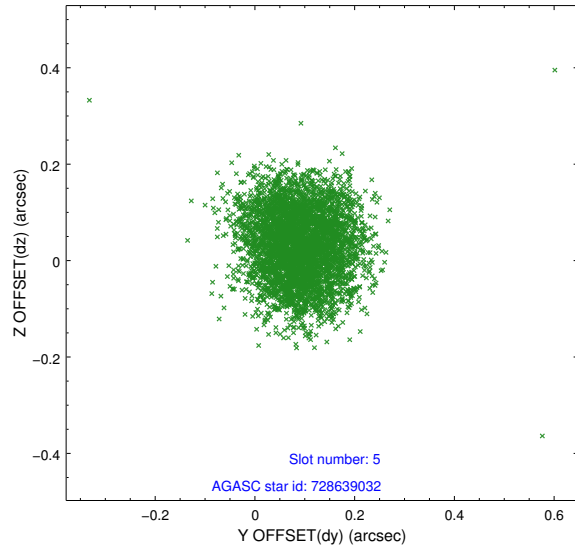
slot	status	id	mag	n_pts	med_dy	med_dz	dr1	dr2	ra	dec	mean_y	mean_z
0	FID	ACIS-S-2	7.10	2076	-0.065	-0.025	0.006	0.010	0.000000	0.000000	-759.44	-1731.41
1	FID	ACIS-S-4	7.21	2076	0.104	0.038	0.005	0.010	0.000000	0.000000	2153.67	176.52
2	FID	ACIS-S-5	7.23	2076	-0.071	-0.004	0.006	0.011	0.000000	0.000000	-1811.49	170.81
3	GUIDE	728630944	8.25	4152	-0.136	-0.068	0.068	0.110	208.923207	-13.740319	1457.01	-514.27
4	OMITTED		0.00	0	0.000	0.000	0.000	0.000	0.000000	0.000000	0.00	0.00
5	GUIDE	728639032	9.15	4149	0.089	0.033	0.100	0.155	209.196450	-13.877558	1593.65	552.36
6	GUIDE	728765720	6.75	4152	-0.024	0.031	0.062	0.093	209.624356	-14.122063	1909.35	2258.34
7	GUIDE	728632824	10.09	4146	0.070	0.006	0.176	0.285	208.794061	-13.959609	2354.29	-665.80

2.4 Star Slots

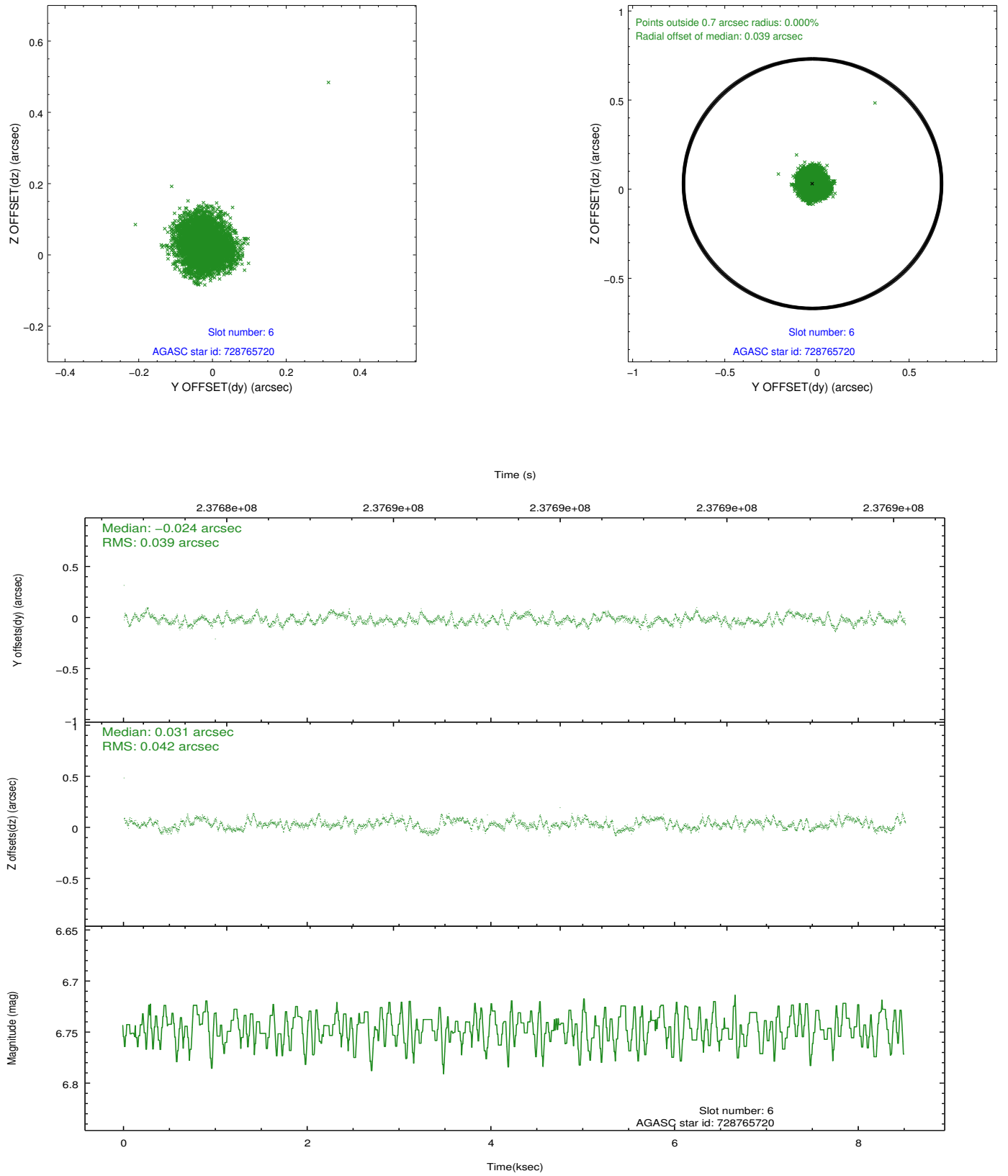
2.4.1 Slot 3



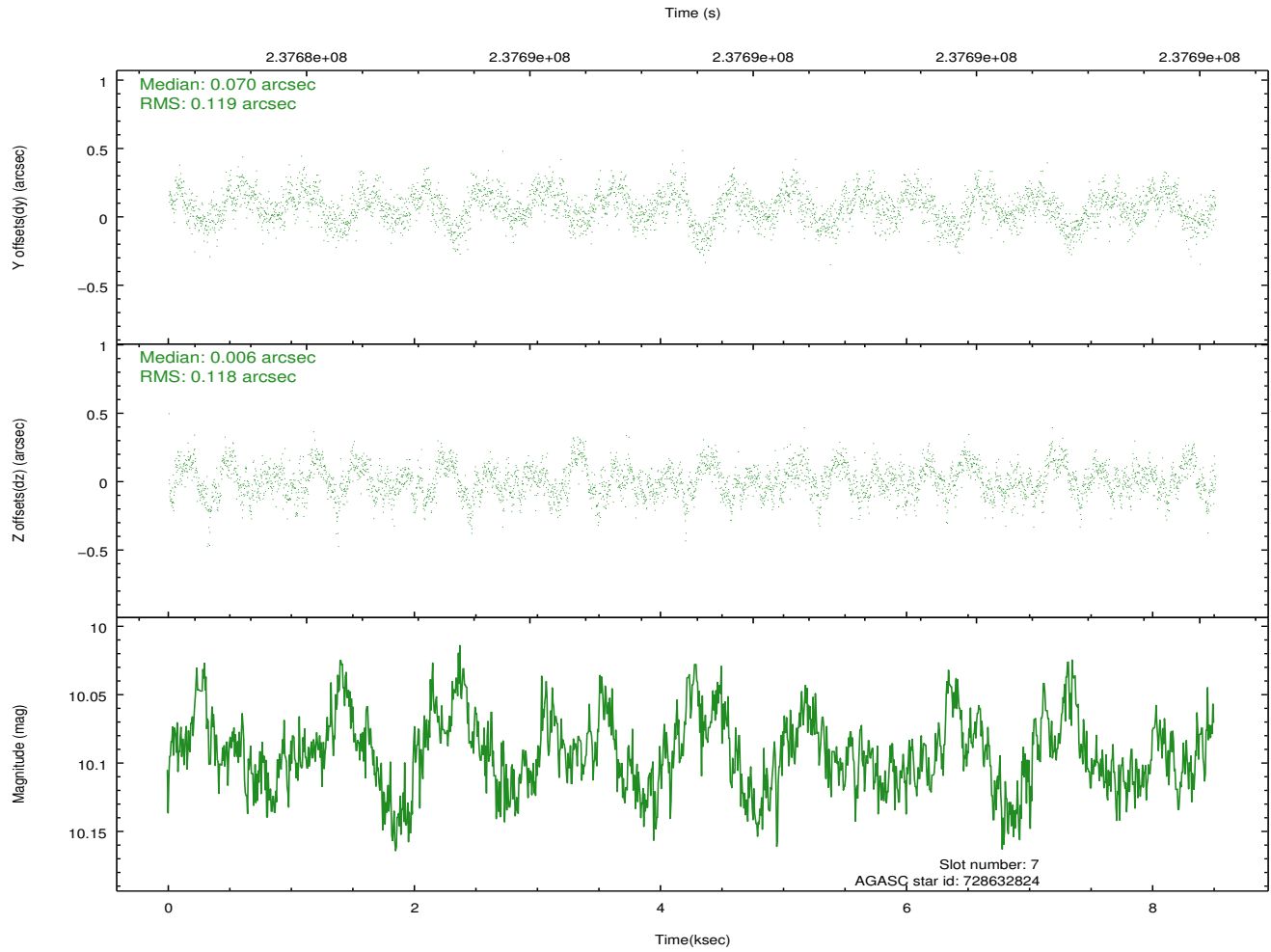
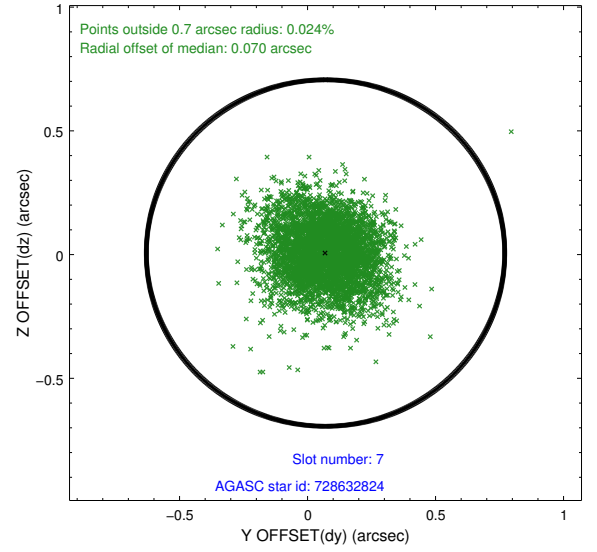
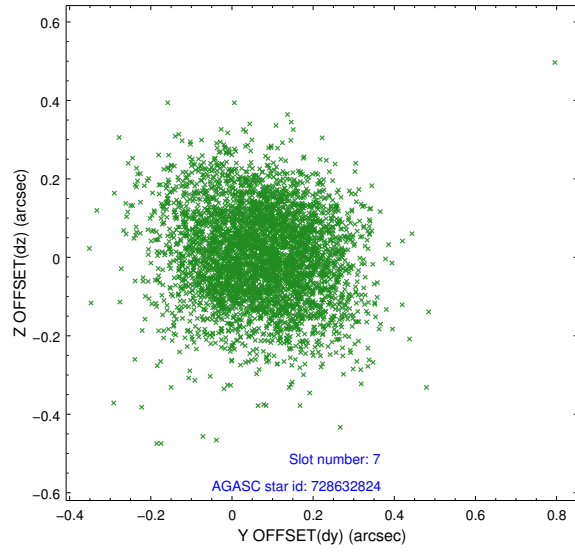
2.4.2 Slot 5



2.4.3 Slot 6

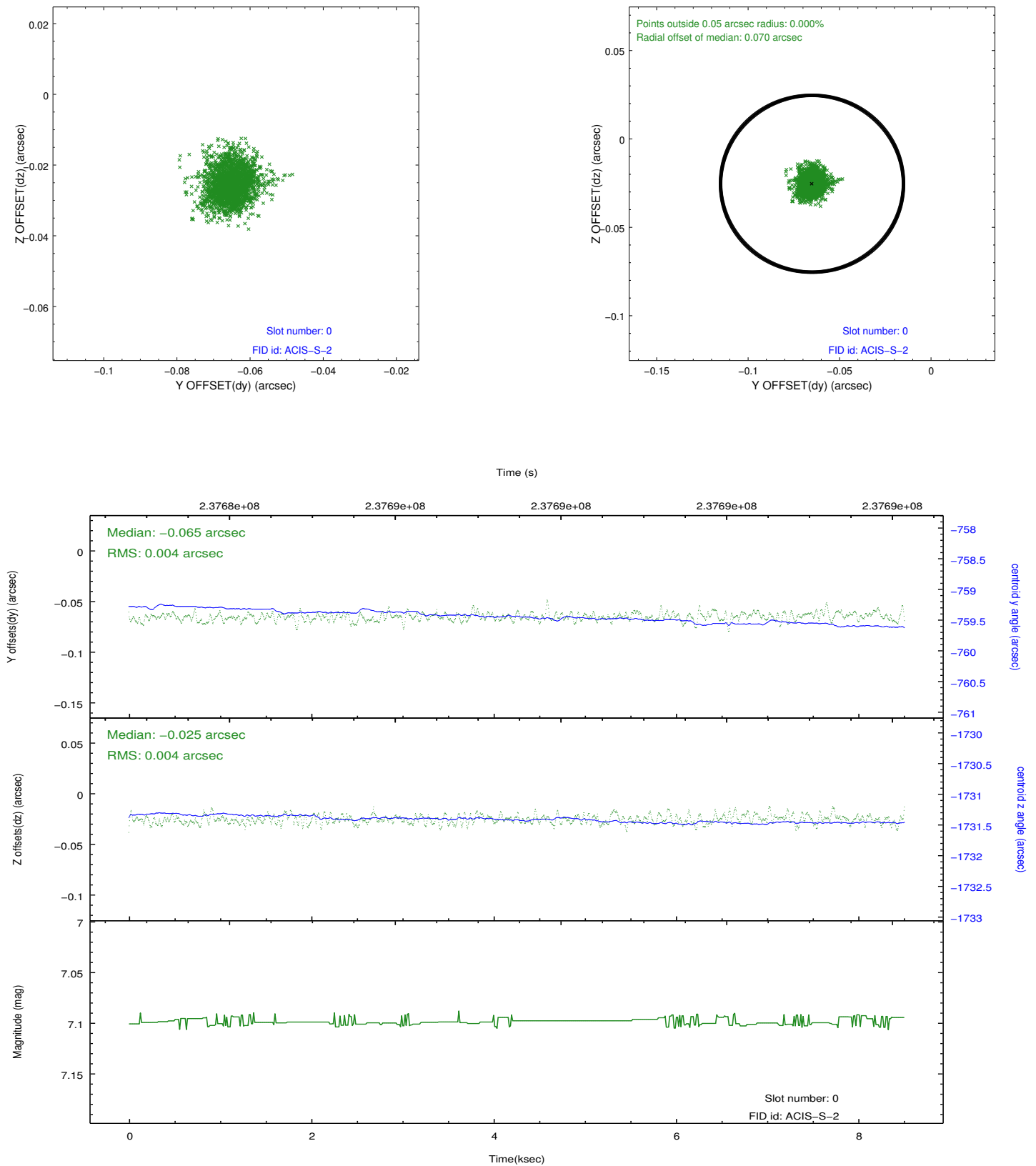


2.4.4 Slot 7

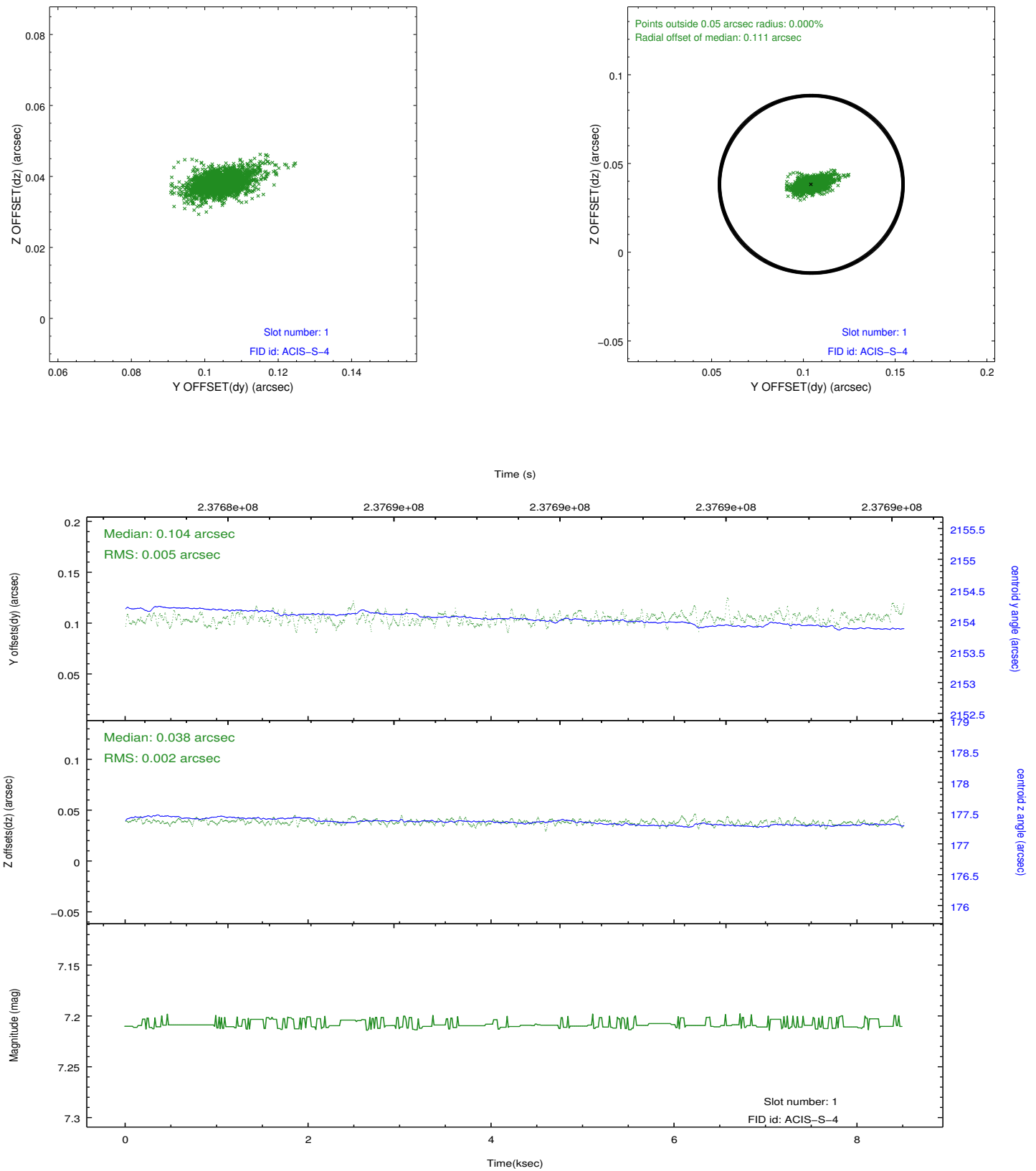


2.5 FID Slots

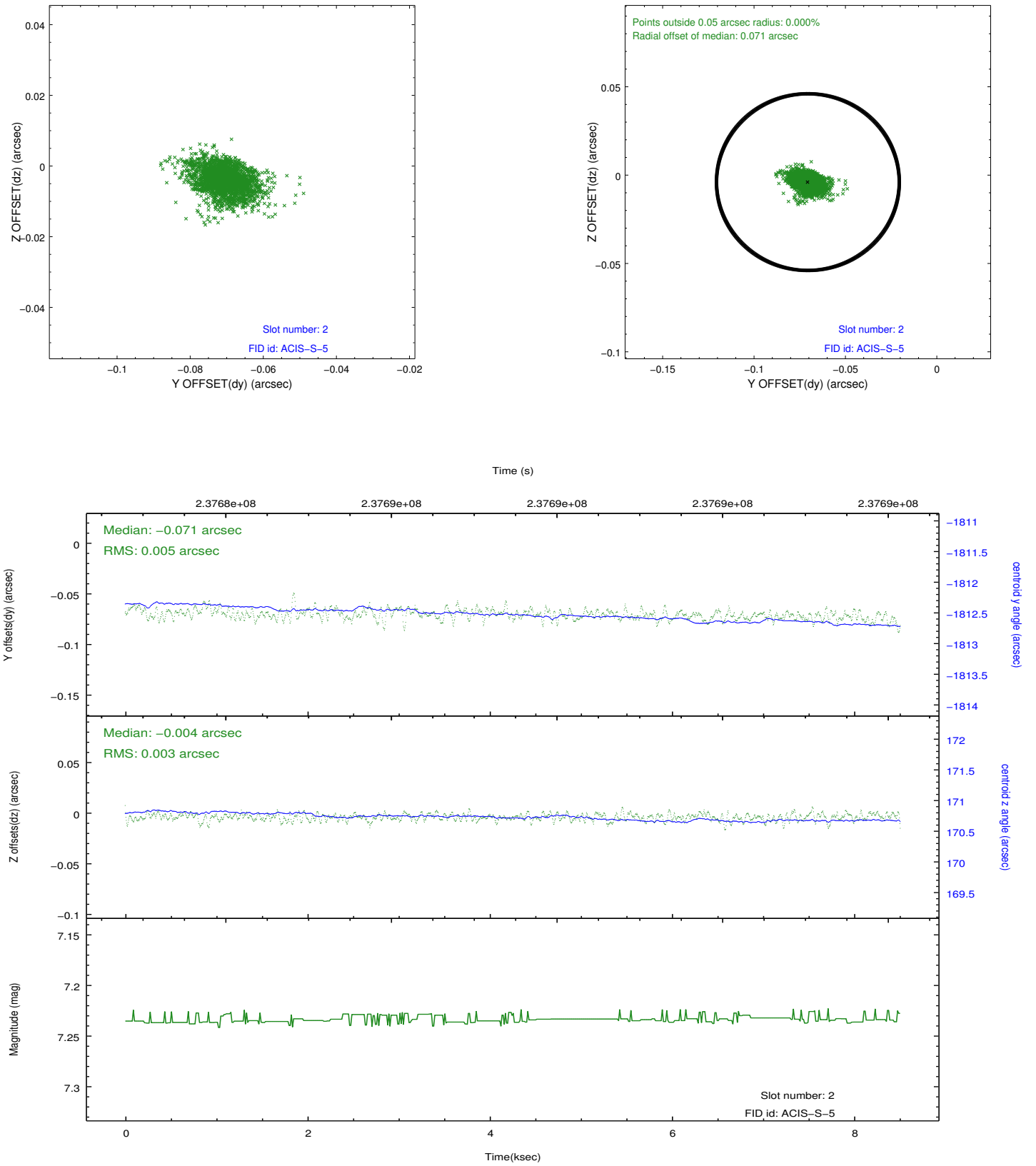
2.5.1 Slot 0



2.5.2 Slot 1



2.5.3 Slot 2



A Summary

A.1 Status

V&V Scientist	Beth Sundheim
V&V Date (YYYY-MM-DD)	2013.01.31
V&V Edition	1
V&V Disposition and Status	OK
V&V Charge Time	8.502399

A.2 Comments

This is a moving target. Users will need to run `sso_freeze` or similar software to position the events in the reference frame of the target. The guide star in slot 4 was removed from the aspect solution due to poor data quality. The aspect solution is improved by the removal of this star from the solution.

Window constraint was not satisfied.