

# V&V Reference Report

## L2 ASCDS Version : 8.5.1.1

Observation 6313 - L2 Version 3  
Chandra X-Ray Center

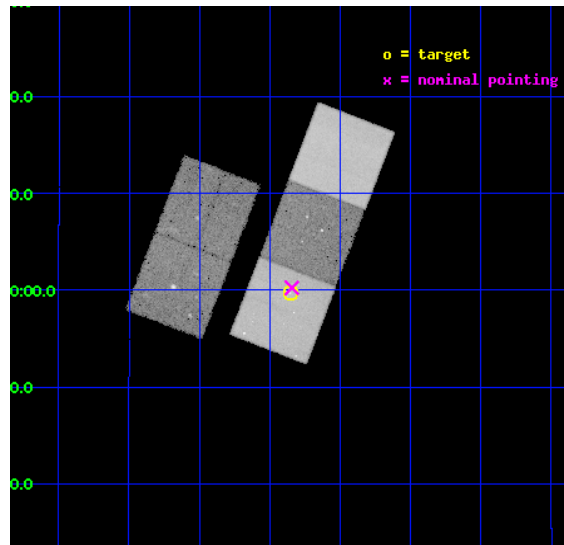
L2 Processing Date : Dec 25 2012

## Contents

<b>1</b>	<b>Front</b>	<b>2</b>
<b>2</b>	<b>OBI</b>	<b>3</b>
2.1	OBI . . . . .	3
2.1.1	Images . . . . .	3
2.1.2	Bias . . . . .	3
2.1.3	Parameters . . . . .	4
2.1.4	Events . . . . .	4
2.2	Compared Parameters . . . . .	5
2.3	Aspect . . . . .	6
2.4	Star Slots . . . . .	9
2.4.1	Slot 3 . . . . .	9
2.4.2	Slot 4 . . . . .	10
2.4.3	Slot 5 . . . . .	11
2.4.4	Slot 6 . . . . .	12
2.4.5	Slot 7 . . . . .	13
2.5	FID Slots . . . . .	14
2.5.1	Slot 0 . . . . .	14
2.5.2	Slot 1 . . . . .	15
2.5.3	Slot 2 . . . . .	16
<b>A</b>	<b>Summary</b>	<b>17</b>
A.1	Status . . . . .	17
A.2	Comments . . . . .	17

# 1 Front

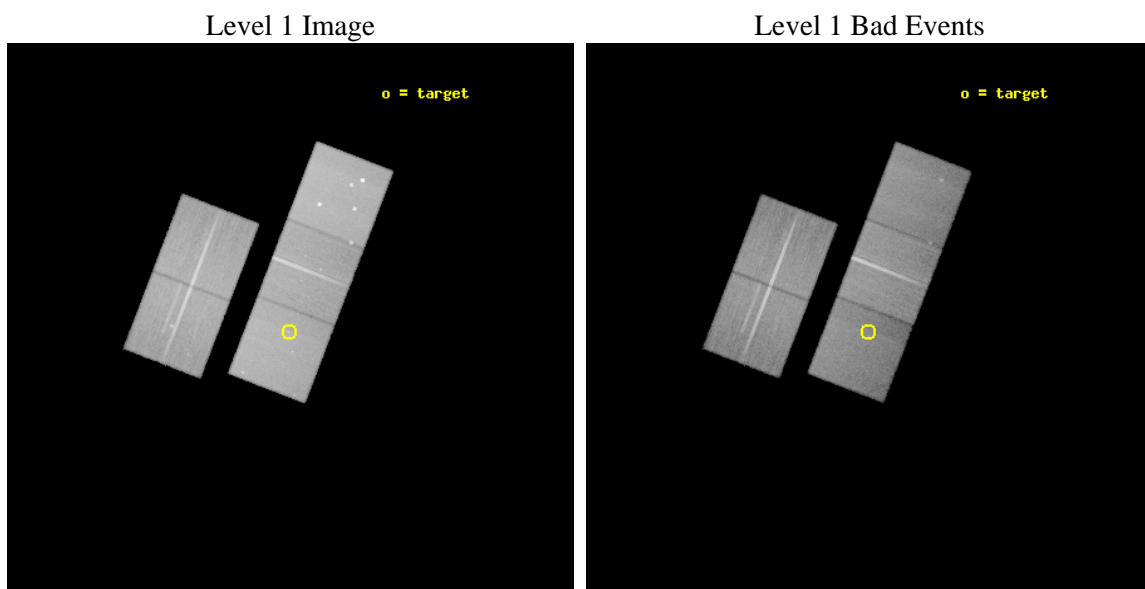
seq_num	701114	Sequence number
obs_id	6313	Observation id
title	The X-ray Jet of the X-ray faint supermassive nuclear black hole in NGC 821	Proposal title
observer	Dr. Giuseppina Fabbiano	Principal investigator
object	NGC821	Source name
dtcycle	0	&#160
cycle	P	events from which exps? Prim/Second/Both
ra_targ	32.0875	Observer's specified target RA [deg]
dec_targ	10.99475	Observer's specified target Dec [deg]
ra_nom	32.085617671937	Nominal RA [deg]
dec_nom	11.004256442295	Nominal Dec [deg]
roll_nom	111.05698497657	Nominal Roll [deg]
revision	3	Processing version of data
ontime	50133.199903578	Sum of GTIs [s]
livetime	49478.172739312	Livetime [s]
ontime2	50126.917913228	Sum of GTIs [s]
ontime3	50120.636112213	Sum of GTIs [s]
ontime5	50133.199903578	Sum of GTIs [s]
ontime6	50133.199903578	Sum of GTIs [s]
ontime7	50133.199903578	Sum of GTIs [s]
l2events	442657	Number of level 2 events



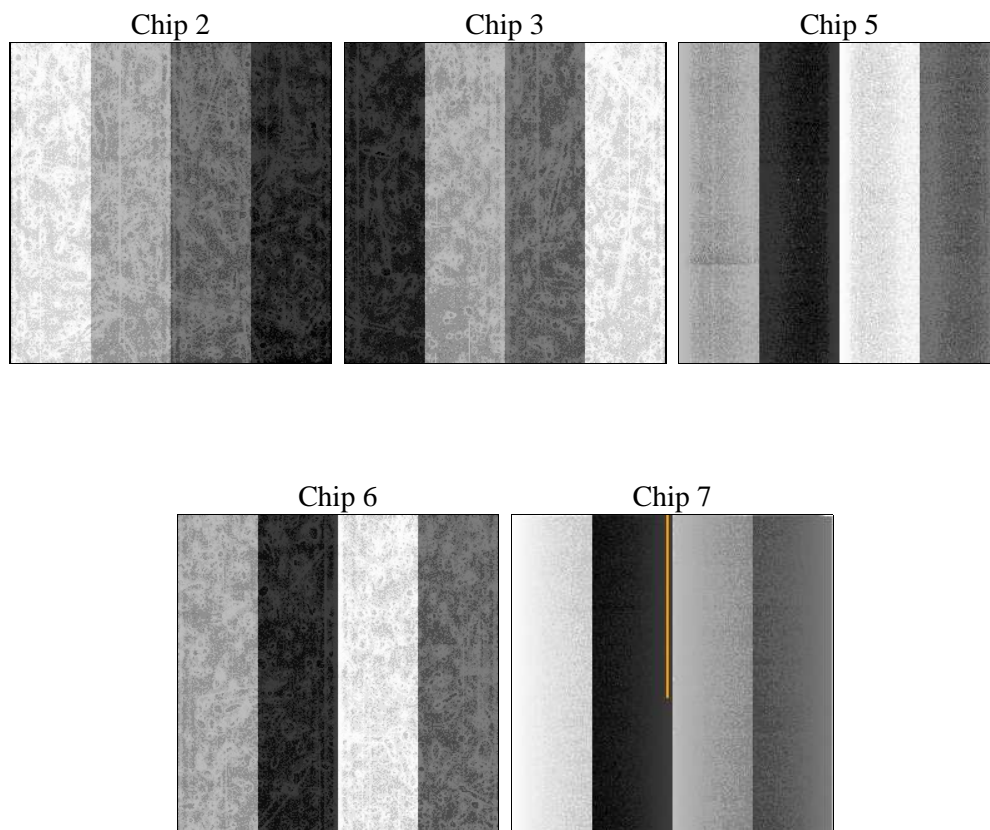
## 2 OBI

### 2.1 OBI

#### 2.1.1 Images



#### 2.1.2 Bias



### 2.1.3 Parameters

obi_num	0	Obi number	sched_exp_time	50000.000000	[s] Scheduled observation exposure time
ascdsver	8.5.1.1	Processing system revision	ontime	50133.199903578	Sum of GTIs [s]
caldsver	4.5.5	&#160	ontime2	50126.917913228	Sum of GTIs [s]
date	2012-12-25T07:18:11	Date and time of file creation	ontime3	50120.636112213	Sum of GTIs [s]
revision	3	Processing version of data	ontime5	50133.199903578	Sum of GTIs [s]
			ontime6	50133.199903578	Sum of GTIs [s]
			ontime7	50133.199903578	Sum of GTIs [s]
			l1events	1803593	Number of level 1 events

### 2.1.4 Events

	ccd 2	ccd 3	ccd 5	ccd 6	ccd 7		ccd 2	ccd 3	ccd 5	ccd 6	ccd 7
level 1 events	333370	320981	455599	331407	362236	grade 0 events	11381	11566	30206	11672	14777
rejected events	301916	289881	226043	298239	198970		3%	3%	6%	3%	4%
rejected %	90%	90%	49%	89%	54%	grade 1 events	165	167	1131	154	361
							0%	0%	0%	0%	0%
						grade 2 events	7349	6529	67306	7188	32882
							2%	2%	14%	2%	9%
						grade 3 events	3484	3567	10030	3815	15690
							1%	1%	2%	1%	4%
						grade 4 events	3515	3508	9625	3600	15410
							1%	1%	2%	1%	4%
						grade 5 events	10577	12794	36623	13099	38678
							3%	3%	8%	3%	10%
						grade 6 events	5897	6094	113614	7073	85327
							1%	1%	24%	2%	23%
						grade 7 events	291002	276756	187064	284806	159111
							87%	86%	41%	85%	43%

## 2.2 Compared Parameters

Parameter	Planned	Actual	Parameter	Planned	Actual
Instrument	ACIS	ACIS	Obspar format version number	7	7
Detector	ACIS-23567	ACIS-23567	Obspar file type	PREDICTED	ACTUAL
Grating	NONE	NONE	Obspar update status	NONE	UPDATED
Data mode	VFAINT	VFAINT	Number of optional ACIS chips dropped	0	0
Observation mode	POINTING	POINTING	On-chip summing requested	N	N
[deg] Pointing RA	32.107433	32.08561767193714	Subarray requested	NONE	NONE
[deg] Pointing Dec	10.987414	11.00425644229531	Alternating exposures requested	N	N
[deg] Pointing Roll	110.896198	111.0569849765652	[s] Primary exposure time	0.000000	3.1
[mm] SIM focus pos	-0.684267	-0.6828225247311905			
[mm] SIM defocus	0	0.001444936568705701			
[mm] SIM translation stage pos	-190.132523	-190.1400660498719			
[mm] SIM translation stage offset	0	0.00754346686406393			
[s] Observation start time (MET)	235831302.184000	235830199.07597			
Observation start date	2005-06-22T12:40:38	2005-06-22T12:23:19			
[s] Observation end time (MET)	235881302.184000	235882263.44084			
Observation end date	2005-06-23T02:33:58	2005-06-23T02:51:03			
Read mode	TIMED	TIMED			

## 2.3 Aspect

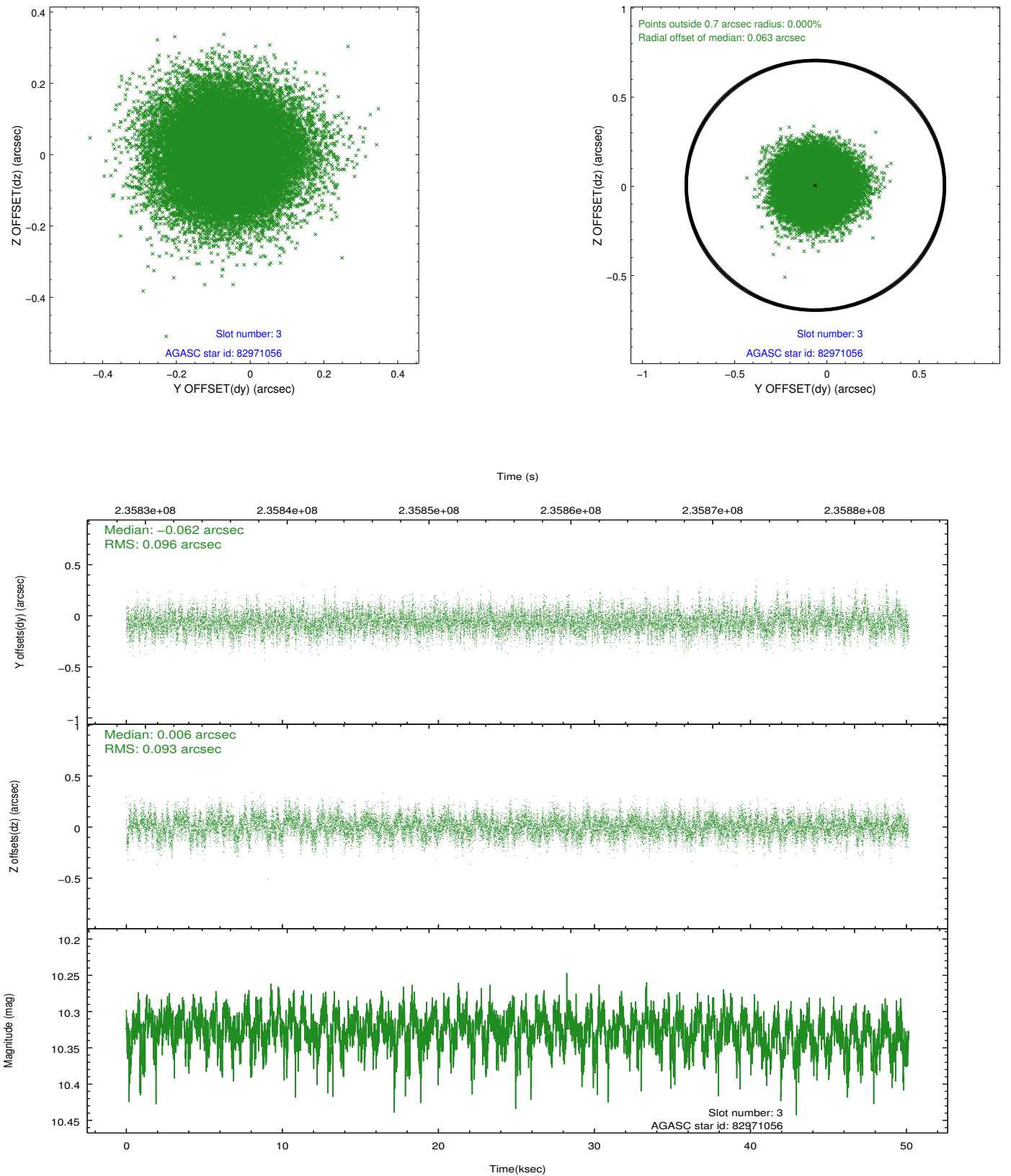


### Slot Statistics

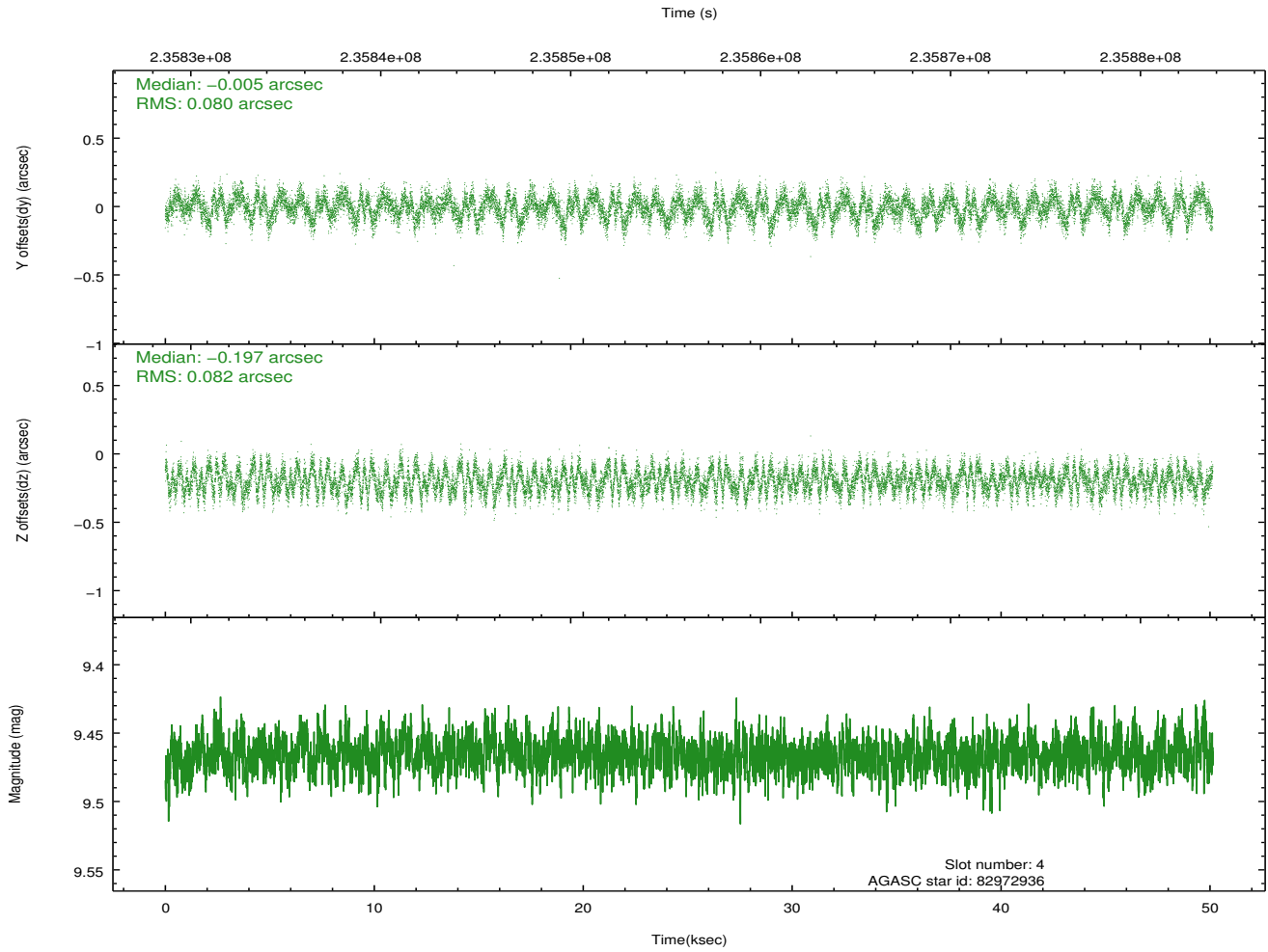
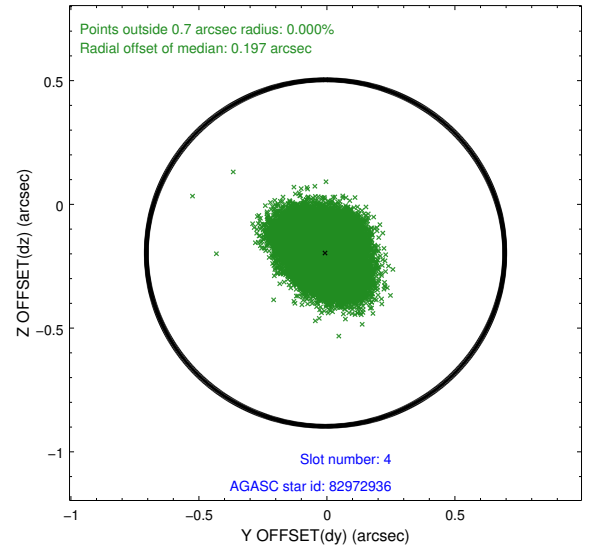
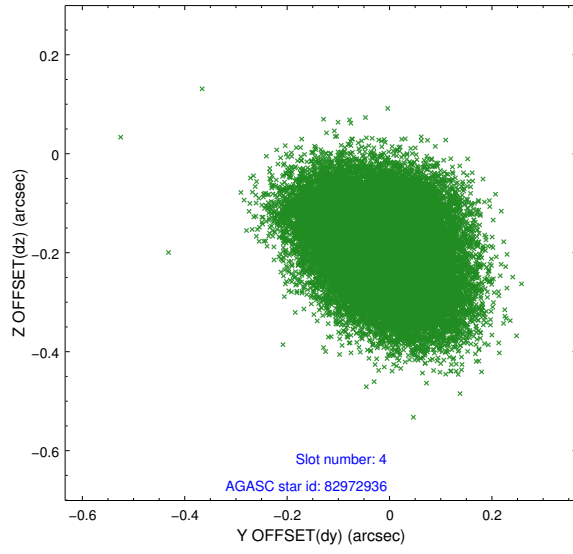
slot	status	id	mag	n_pts	med_dy	med_dz	dr1	dr2	ra	dec	mean_y	mean_z
0	FID	ACIS-S-1	7.19	12228	0.037	-0.084	0.015	0.049	0.000000	0.000000	936.08	-1728.86
1	FID	ACIS-S-4	7.20	12229	0.048	0.045	0.015	0.028	0.000000	0.000000	2153.52	175.43
2	FID	ACIS-S-5	7.23	12227	-0.110	0.052	0.008	0.029	0.000000	0.000000	-1812.93	169.06
3	GUIDE	82971056	10.33	24435	-0.062	0.006	0.143	0.232	31.381677	11.249277	1797.74	2056.75
4	GUIDE	82972936	9.47	24434	-0.005	-0.197	0.124	0.195	31.880349	11.323150	1415.55	317.66
5	GUIDE	82976088	10.27	24403	0.123	-0.166	0.265	0.430	31.548572	10.635312	-477.00	2298.34
6	GUIDE	82976744	9.50	24443	0.149	0.087	0.110	0.179	32.095784	10.602457	-1279.68	533.08
7	GUIDE	82974960	9.84	24429	-0.231	0.271	0.157	0.254	31.911636	11.621581	2379.12	-168.99

## 2.4 Star Slots

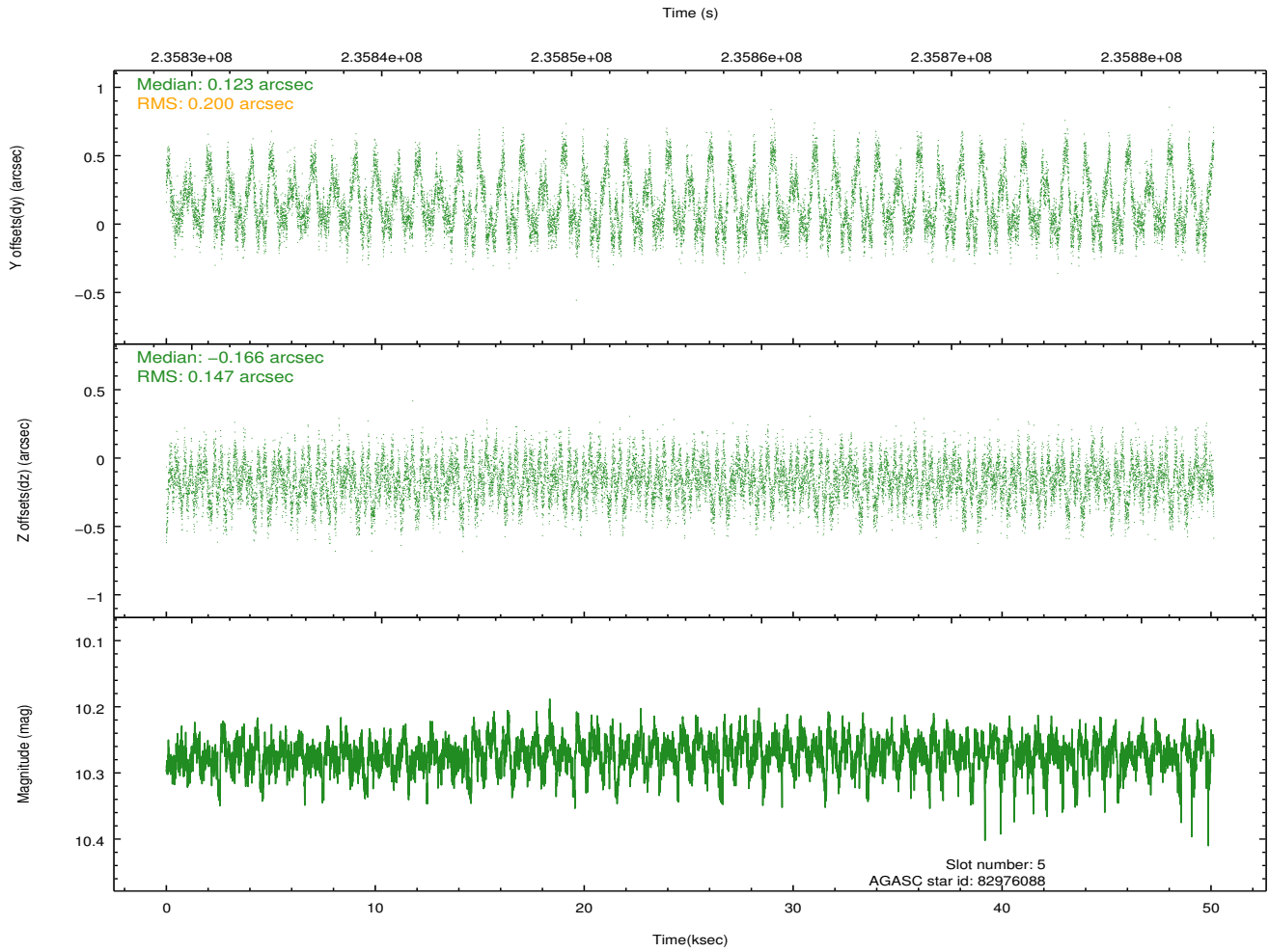
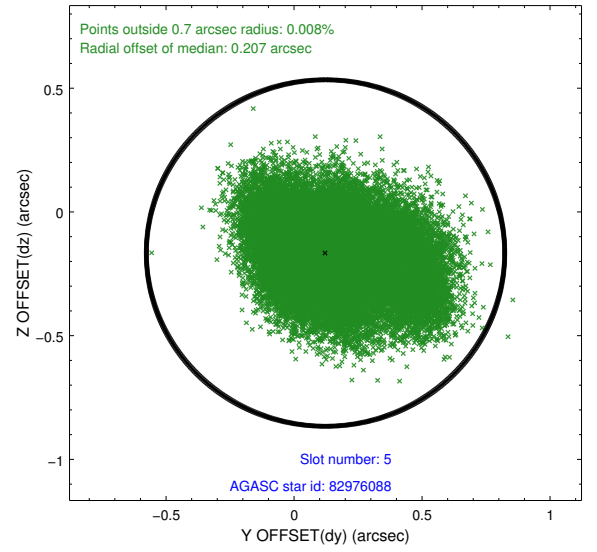
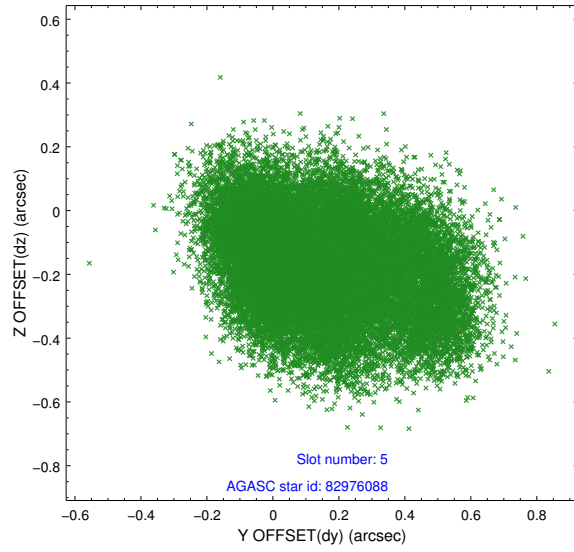
### 2.4.1 Slot 3



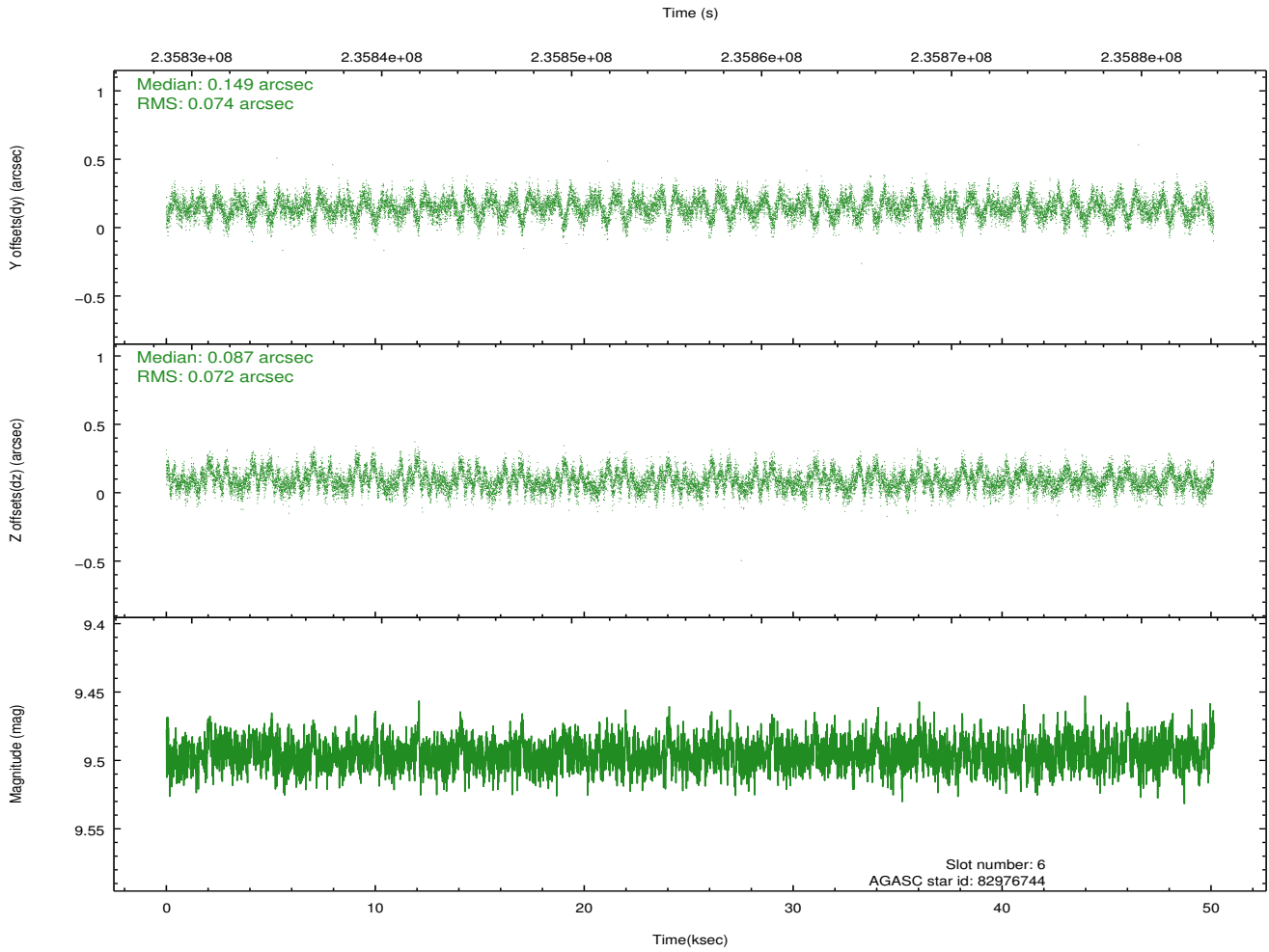
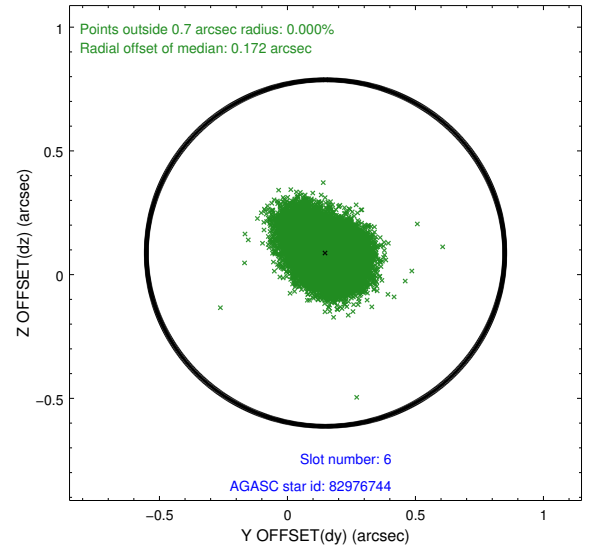
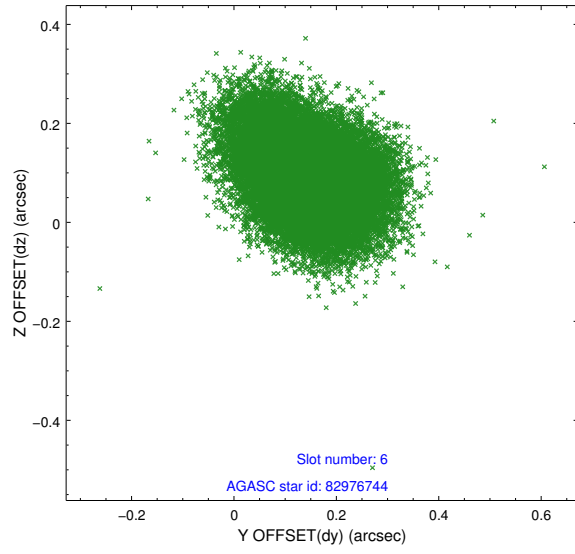
## 2.4.2 Slot 4



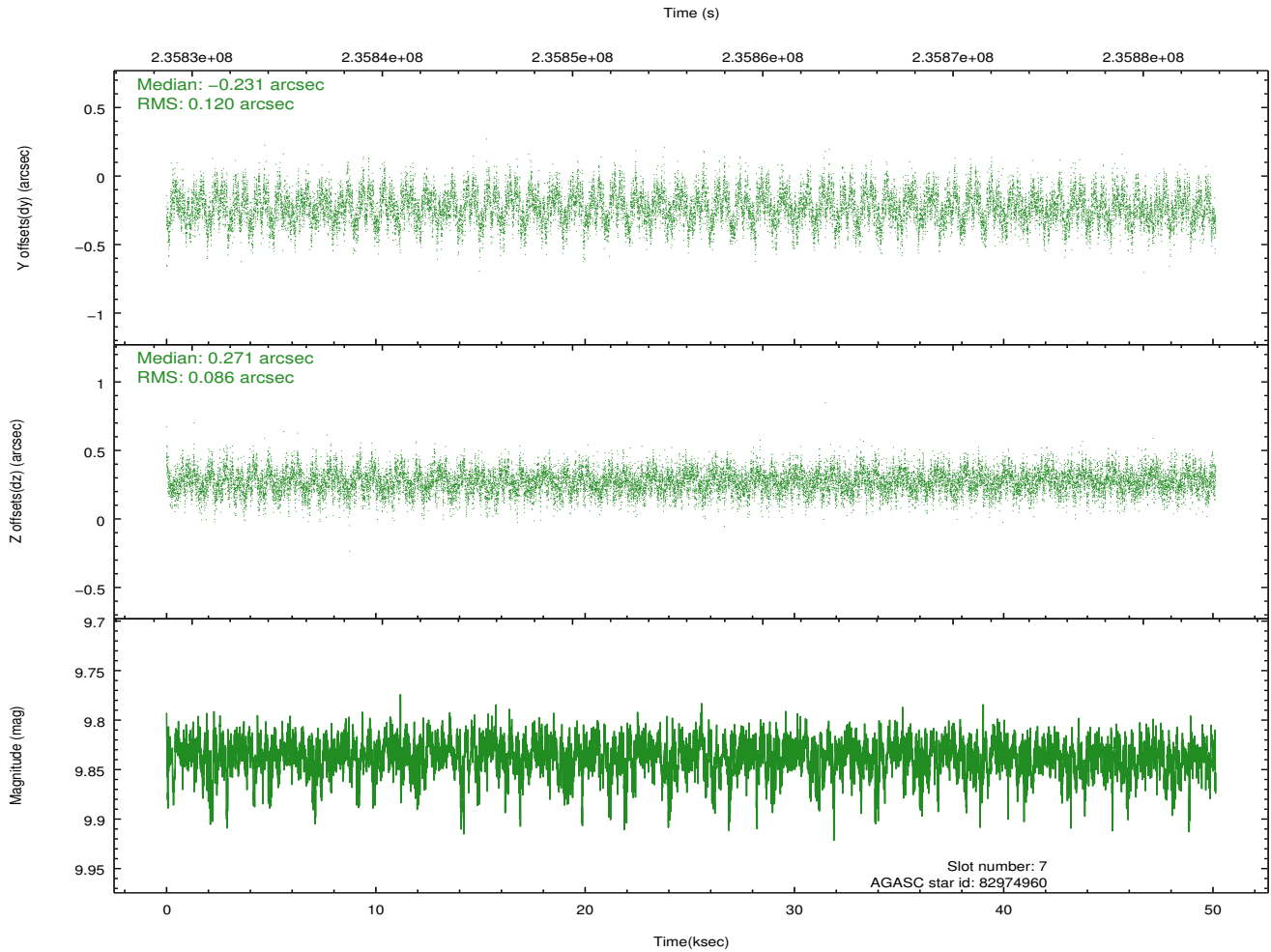
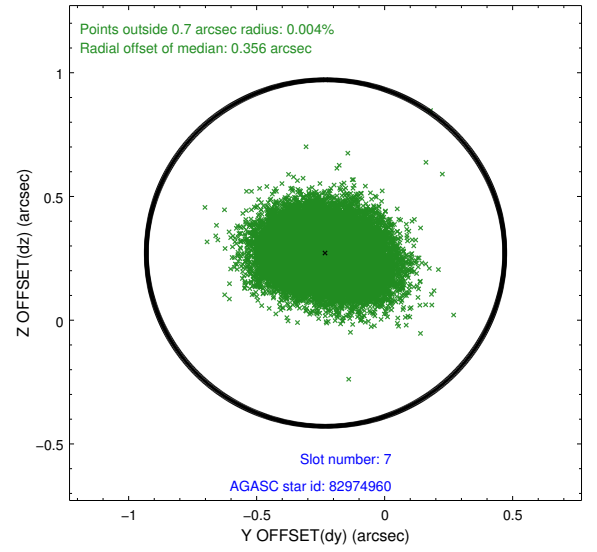
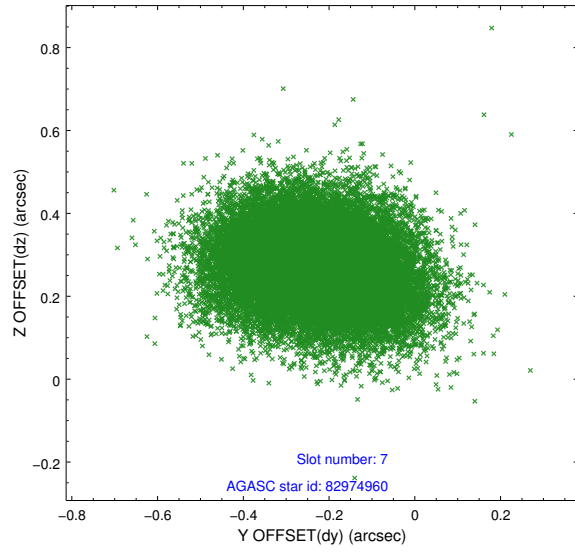
### 2.4.3 Slot 5



## 2.4.4 Slot 6

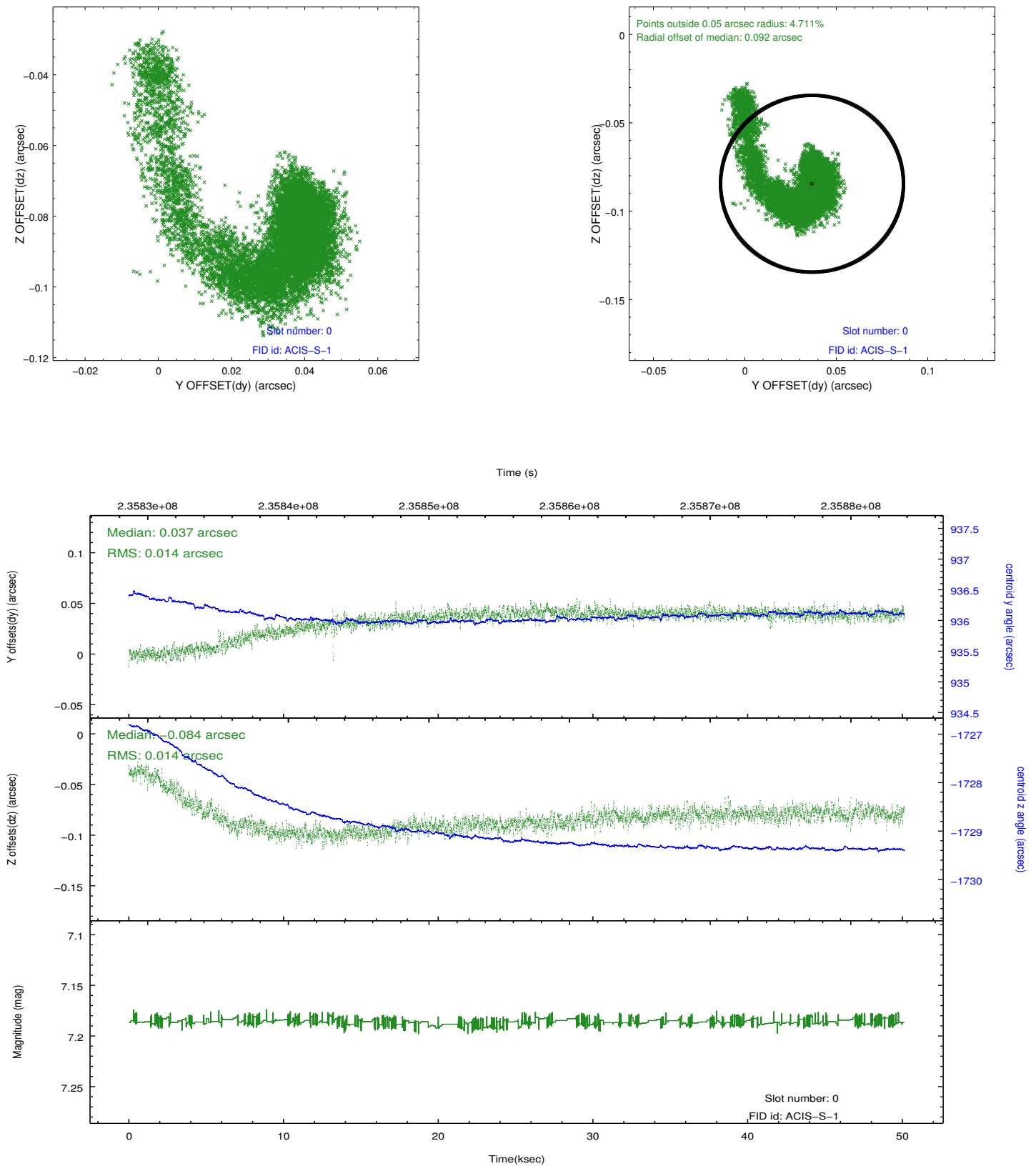


## 2.4.5 Slot 7

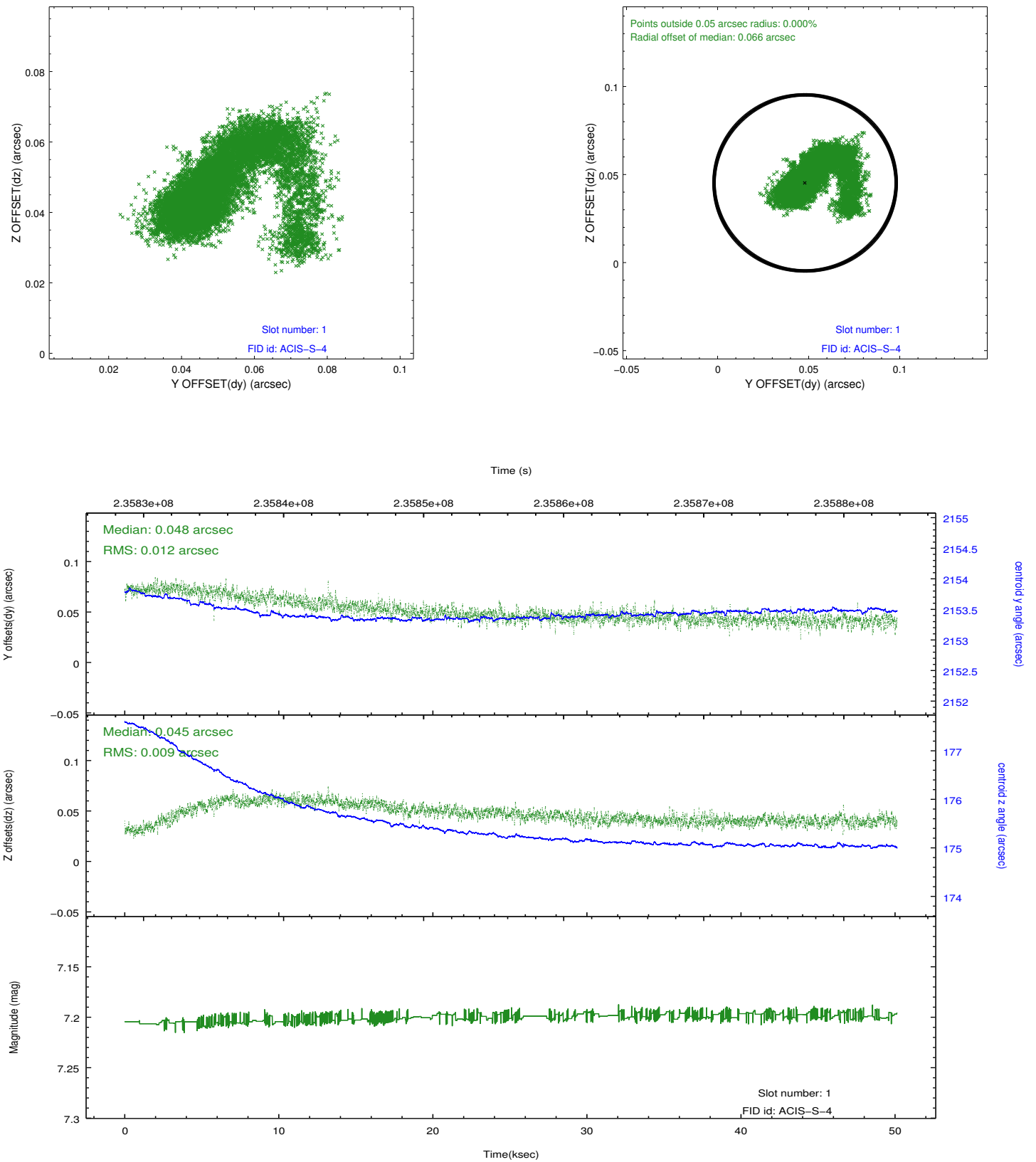


## 2.5 FID Slots

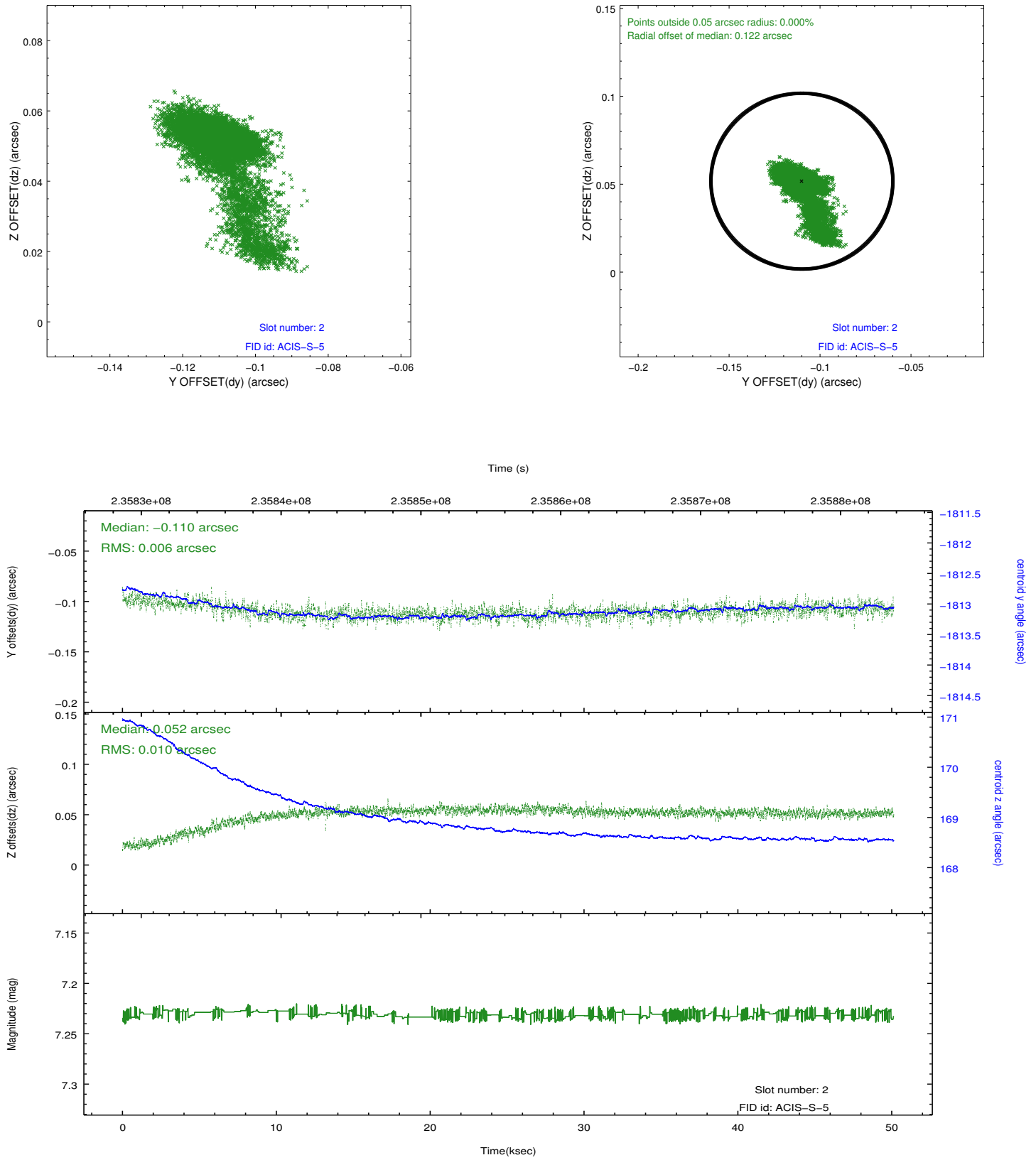
### 2.5.1 Slot 0



## 2.5.2 Slot 1



### 2.5.3 Slot 2



## A Summary

### A.1 Status

V&V Scientist	Jen Lauer
V&V Date (YYYY-MM-DD)	2013.01.17
V&V Edition	1
V&V Disposition and Status	OK
V&V Charge Time	50.13319

### A.2 Comments

Joint Proposal: NRAO