

# V&V Reference Report

## L2 ASCDS Version : 7.6.10

Observation 62873 - L2 Version 001  
Chandra X-Ray Center

L2 Processing Date : Jun 6 2007

## Contents

<b>1</b>	<b>Front</b>	<b>2</b>
<b>2</b>	<b>OBI</b>	<b>3</b>
2.1	OBI . . . . .	3
2.1.1	Images . . . . .	3
2.1.2	Bias . . . . .	3
2.1.3	Parameters . . . . .	4
2.1.4	Events . . . . .	4
2.2	Compared Parameters . . . . .	5
2.3	Star Slots . . . . .	6
2.4	FID Slots . . . . .	6
<b>A</b>	<b>Summary</b>	<b>7</b>
A.1	Status . . . . .	7
A.2	Comments . . . . .	7

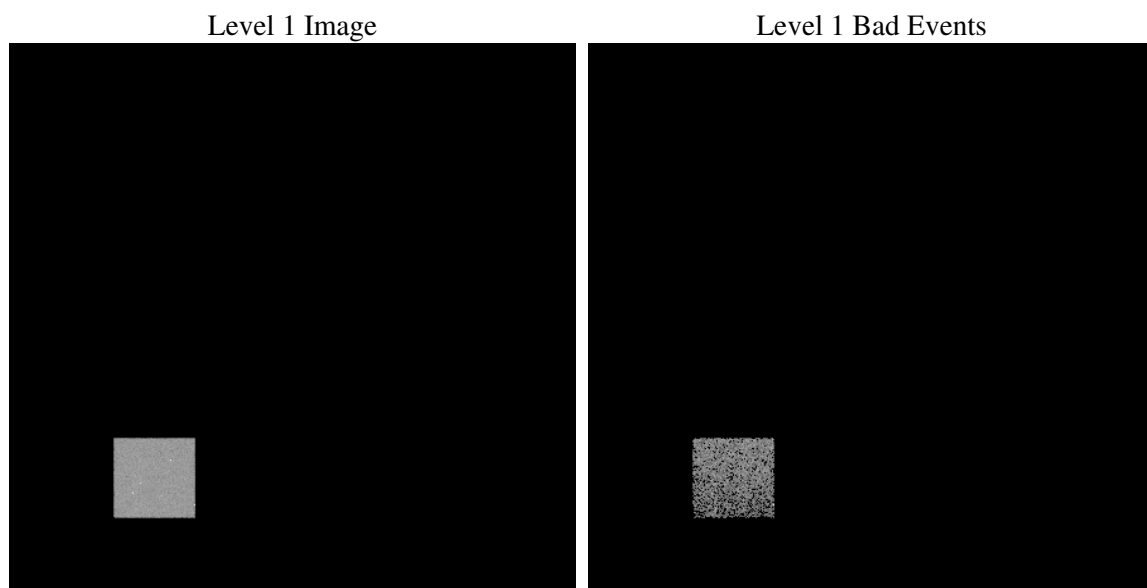
# 1 Front

seq_num	&#160
obs_id	62873
title	ACIS-5 diagnostics; squeegee control run
observer	CHANDRA engineering request/realtime commanding
object	&#160
dtcycle	0
cycle	P
ra_targ	0.0
dec_targ	0.0
ra_nom	56.451248742047
dec_nom	68.975908855226
roll_nom	109.07489722086
revision	2
ontime	1473.8416517228
livetime	1455.7375699438
ontime5	1473.8416517228
l2events	98399

## 2 OBI

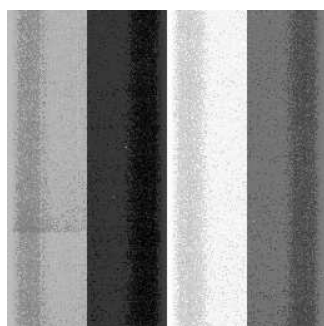
### 2.1 OBI

#### 2.1.1 Images



#### 2.1.2 Bias

Chip 5



### 2.1.3 Parameters

obi_num	0
ascdsver	7.6.10
caldbver	3.4.0
date	2007-06-07T03:16:46
revision	2

sched_exp_time	0.0
ontime	1473.8416517228
ontime5	1473.8416517228
l1events	109928

### 2.1.4 Events

	<b>ccd 5</b>
level 1 events	109928
rejected events	9385
rejected %	8%

	<b>ccd 5</b>
grade 0 events	27768
	25%
grade 1 events	129
	0%
grade 2 events	33123
	30%
grade 3 events	7131
	6%
grade 4 events	7136
	6%
grade 5 events	1929
	1%
grade 6 events	25638
	23%
grade 7 events	7074
	6%

## 2.2 Compared Parameters

Parameter	Planned	Actual	Parameter	Planned	Actual
Instrument	ACIS	ACIS	Obspar format version number	6	6
Detector	ACIS-5	ACIS-5	Obspar file type	PREDICTED	ACTUAL
Grating	NONE	NONE	Obspar update status	NONE	UPDATED
Data mode	FAINT	FAINT	On-chip summing requested	N	N
Observation mode	SECONDARY	SECONDARY	Subarray requested	NONE	NONE
Pointing RA	0	56.45124874204721	Alternating exposures requested	N	N
Pointing Dec	0	68.97590885522629	Primary exposure time	0.000000	3.3
Pointing Roll	0.0	109.0748972208564			
SIM focus pos (mm)	-0.684267	-0.7809083437167272			
SIM defocus (mm)	0	0.7524282956875696			
SIM translation stage pos (mm)	-190.132523	250.466033080201			
SIM translation stage offset (mm)	0	-0.01005468664627074			
Observation start time	84526059.272	84526058.503084			
Observation start date	2000-09-05T07:27:39	2000-09-05T07:27:38			
Observation end time	84542877.472	84542876.703715			
Observation end date	2000-09-05T12:07:57	2000-09-05T12:07:56			
Read mode	TIMED	TIMED			

## **2.3 Star Slots**

## **2.4 FID Slots**

## A Summary

### A.1 Status

V&V Scientist	Jen Lauer
V&V Date (YYYY-MM-DD)	2007.06.07
V&V Edition	1
V&V Disposition and Status	OK
V&V Charge Time	1.47384165

### A.2 Comments