

V&V Reference Report

L2 ASCDS Version : 8.5.1.1

Observation 6273 - L2 Version 3
Chandra X-Ray Center

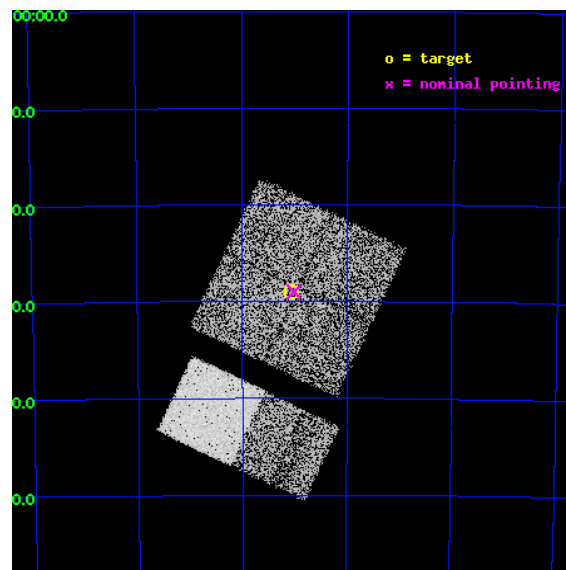
L2 Processing Date : Dec 26 2012

Contents

1	Front	2
2	OBI	3
2.1	OBI	3
2.1.1	Images	3
2.1.2	Bias	3
2.1.3	Parameters	4
2.1.4	Events	4
2.2	Compared Parameters	5
2.3	Aspect	6
2.4	Star Slots	9
2.4.1	Slot 3	9
2.4.2	Slot 4	10
2.4.3	Slot 5	11
2.4.4	Slot 6	12
2.4.5	Slot 7	13
2.5	FID Slots	14
2.5.1	Slot 0	14
2.5.2	Slot 1	15
2.5.3	Slot 2	16
A	Summary	17
A.1	Status	17
A.2	Comments	17

1 Front

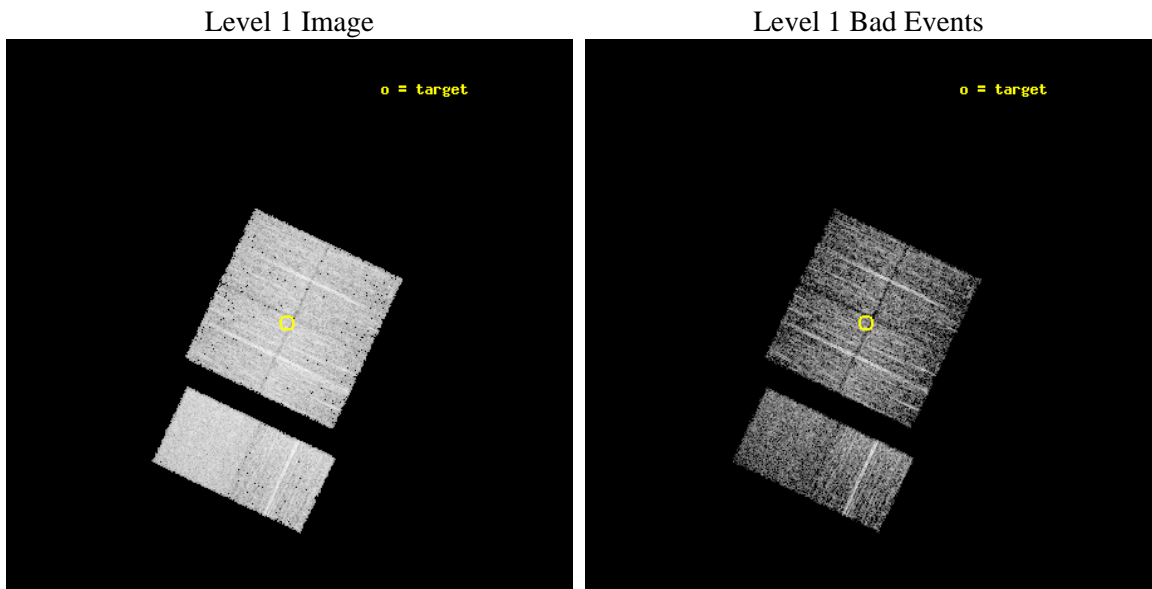
seq_num	701175	Sequence number
obs_id	6273	Observation id
title	Search for strongly obscured AGNs: support for INTEGRAL all-sky hard X-ray survey	Proposal title
observer	Prof. Rashid Sunyaev	Principal investigator
object	IGR J10252-6829	Source name
dtcycle	0	
cycle	P	events from which exps? Prim/Second/Both
ra_targ	156.267083	Observer's specified target RA [deg]
dec_targ	-68.483	Observer's specified target Dec [deg]
ra_nom	156.25457090712	Nominal RA [deg]
dec_nom	-68.483276293567	Nominal Dec [deg]
roll_nom	205.40951603435	Nominal Roll [deg]
revision	3	Processing version of data
ontime	3679.9999862909	Sum of GTIs [s]
livetime	3633.4016106346	Livetime [s]
ontime0	3679.9999862909	Sum of GTIs [s]
ontime1	3679.9999862909	Sum of GTIs [s]
ontime2	3679.9999862909	Sum of GTIs [s]
ontime3	3679.9999862909	Sum of GTIs [s]
ontime6	3679.9999862909	Sum of GTIs [s]
ontime7	3679.9999862909	Sum of GTIs [s]
l2events	37701	Number of level 2 events



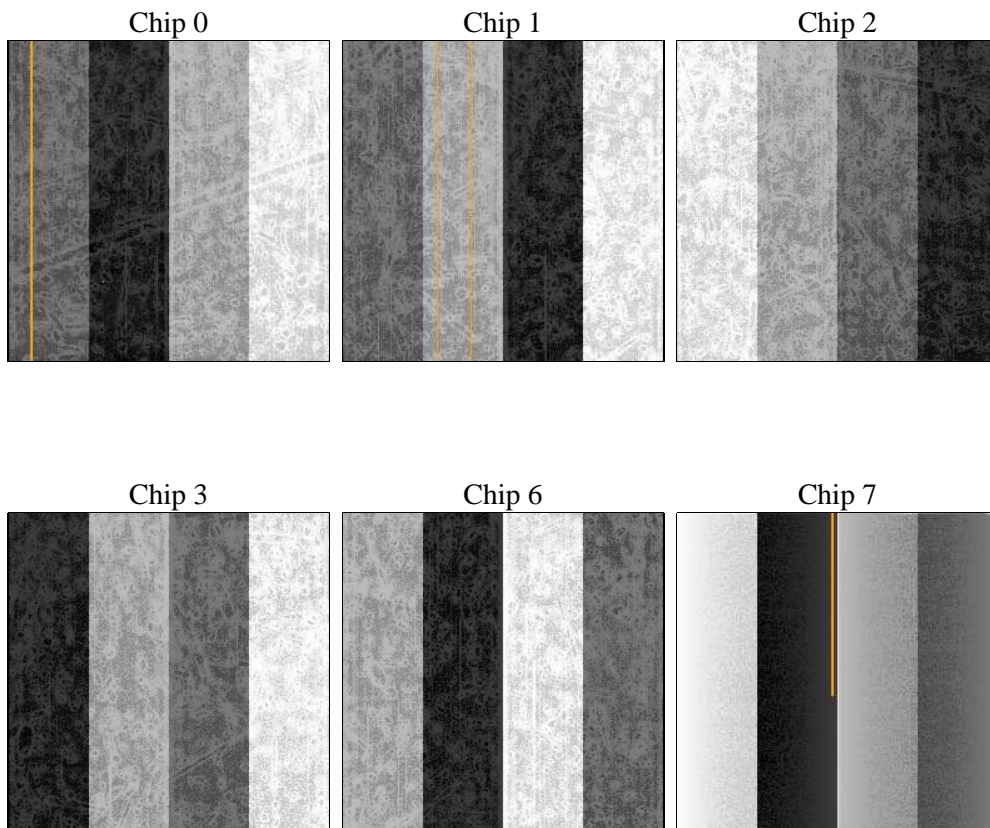
2 OBI

2.1 OBI

2.1.1 Images



2.1.2 Bias



2.1.3 Parameters

obi_num	1	Obi number	sched_exp_time	3500.000000	[s] Scheduled observation exposure time
ascdsver	8.5.1.1	Processing system revision	ontime	3679.9999862909	Sum of GTIs [s]
caldsver	4.5.5	 	ontime0	3679.9999862909	Sum of GTIs [s]
date	2012-12-26T15:17:35	Date and time of file creation	ontime1	3679.9999862909	Sum of GTIs [s]
revision	3	Processing version of data	ontime2	3679.9999862909	Sum of GTIs [s]
			ontime3	3679.9999862909	Sum of GTIs [s]
			ontime6	3679.9999862909	Sum of GTIs [s]
			ontime7	3679.9999862909	Sum of GTIs [s]
			l1events	209111	Number of level 1 events

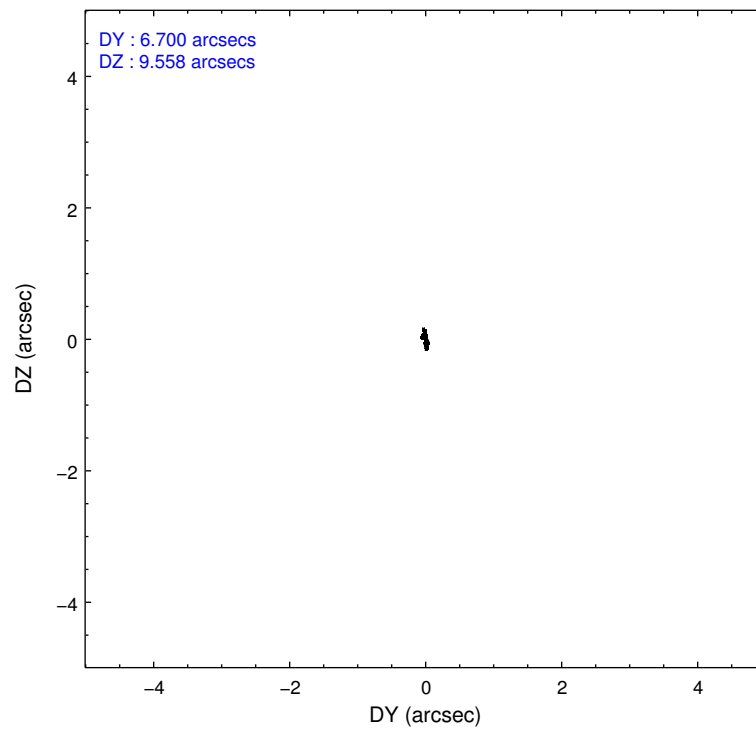
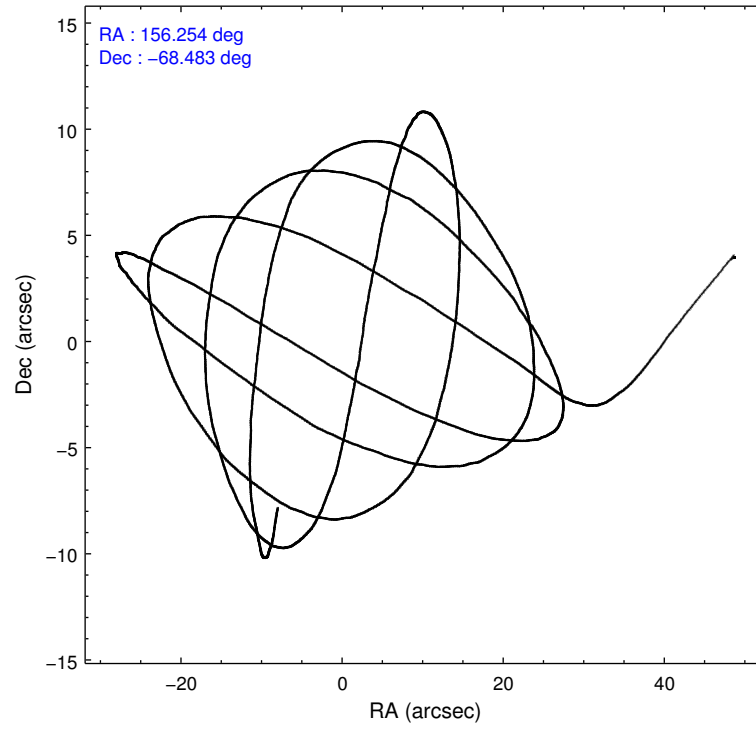
2.1.4 Events

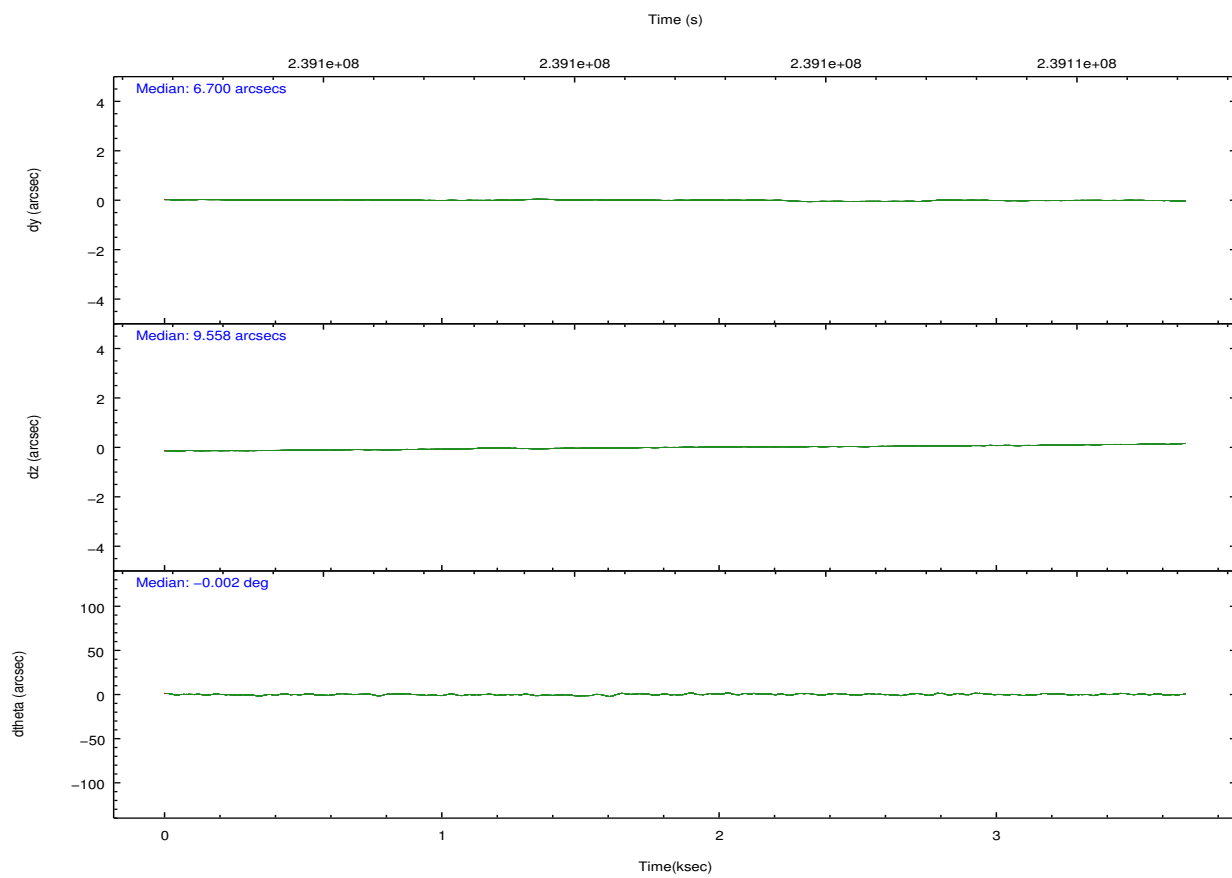
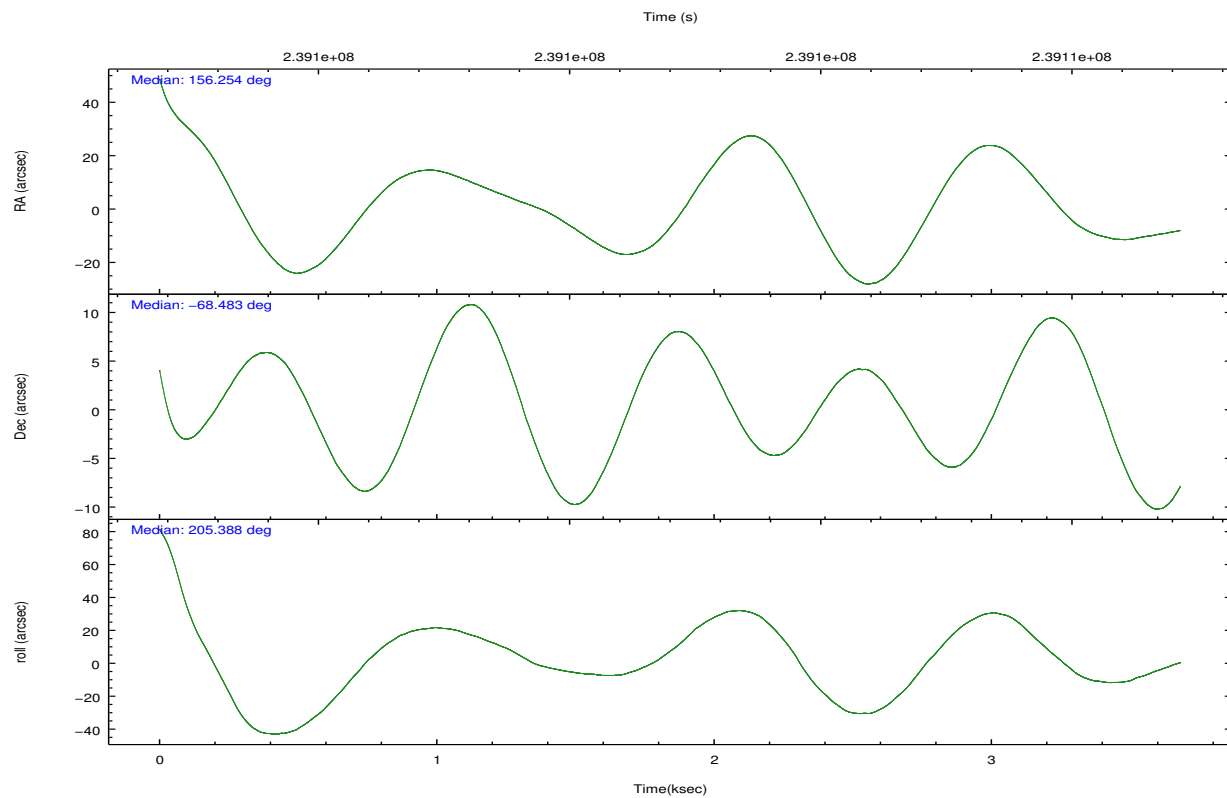
	ccd 0	ccd 1	ccd 2	ccd 3	ccd 6	ccd 7		ccd 0	ccd 1	ccd 2	ccd 3	ccd 6	ccd 7
level 1 events	29424	31325	37734	33108	35828	41692	grade 0 events	2211	1973	2457	2115	2002	1828
rejected events	24453	26410	32523	28537	31065	23524		7%	6%	6%	6%	5%	4%
rejected %	83%	84%	86%	86%	86%	56%	grade 1 events	24	17	27	18	16	59
								0%	0%	0%	0%	0%	0%
							grade 2 events	1257	1220	1284	985	1253	3869
								4%	3%	3%	2%	3%	9%
							grade 3 events	371	390	333	372	347	1631
								1%	1%	0%	1%	0%	3%
							grade 4 events	373	357	384	358	354	1618
								1%	1%	1%	1%	0%	3%
							grade 5 events	1158	1251	1111	1285	1308	3794
								3%	3%	2%	3%	3%	9%
							grade 6 events	804	1009	787	779	845	9376
								2%	3%	2%	2%	2%	22%
							grade 7 events	23226	25108	31351	27196	29703	19517
								78%	80%	83%	82%	82%	46%

2.2 Compared Parameters

Parameter	Planned	Actual	Parameter	Planned	Actual
Instrument	ACIS	ACIS	Obspar format version number	7	7
Detector	ACIS-012367	ACIS-012367	Obspar file type	PREDICTED	ACTUAL
Grating	NONE	NONE	Obspar update status	NONE	UPDATED
Data mode	FAINT	FAINT	Number of optional ACIS chips dropped	0	0
Observation mode	POINTING	POINTING	On-chip summing requested	N	N
[deg] Pointing RA	156.296544	156.2545709071163	Subarray requested	NONE	NONE
[deg] Pointing Dec	-68.460593	-68.48327629356695	Alternating exposures requested	N	N
[deg] Pointing Roll	205.239714	205.409516034353	[s] Primary exposure time	0.000000	3.2
[mm] SIM focus pos	-0.782348	-0.7809083437167272			
[mm] SIM defocus	0	0.001439871863259334			
[mm] SIM translation stage pos	-233.592463	-233.5874344608287			
[mm] SIM translation stage offset	0	-0.005018542100998502			
[s] Observation start time (MET)	239102743.184000	239101659.43813			
Observation start date	2005-07-30T09:24:39	2005-07-30T09:07:39			
[s] Observation end time (MET)	239106243.184000	239107576.7634			
Observation end date	2005-07-30T10:22:59	2005-07-30T10:46:16			
Read mode	TIMED	TIMED			

2.3 Aspect



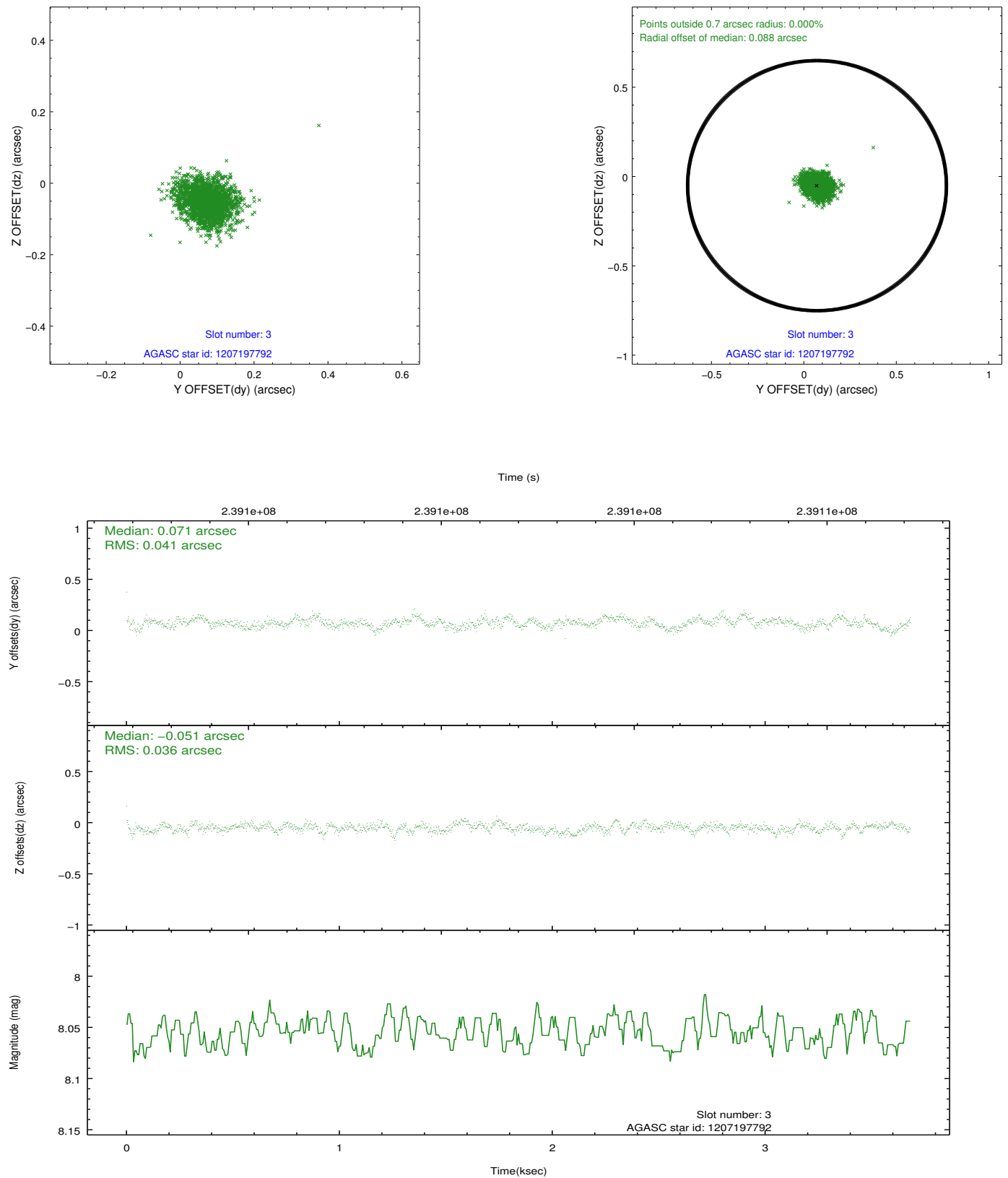


Slot Statistics

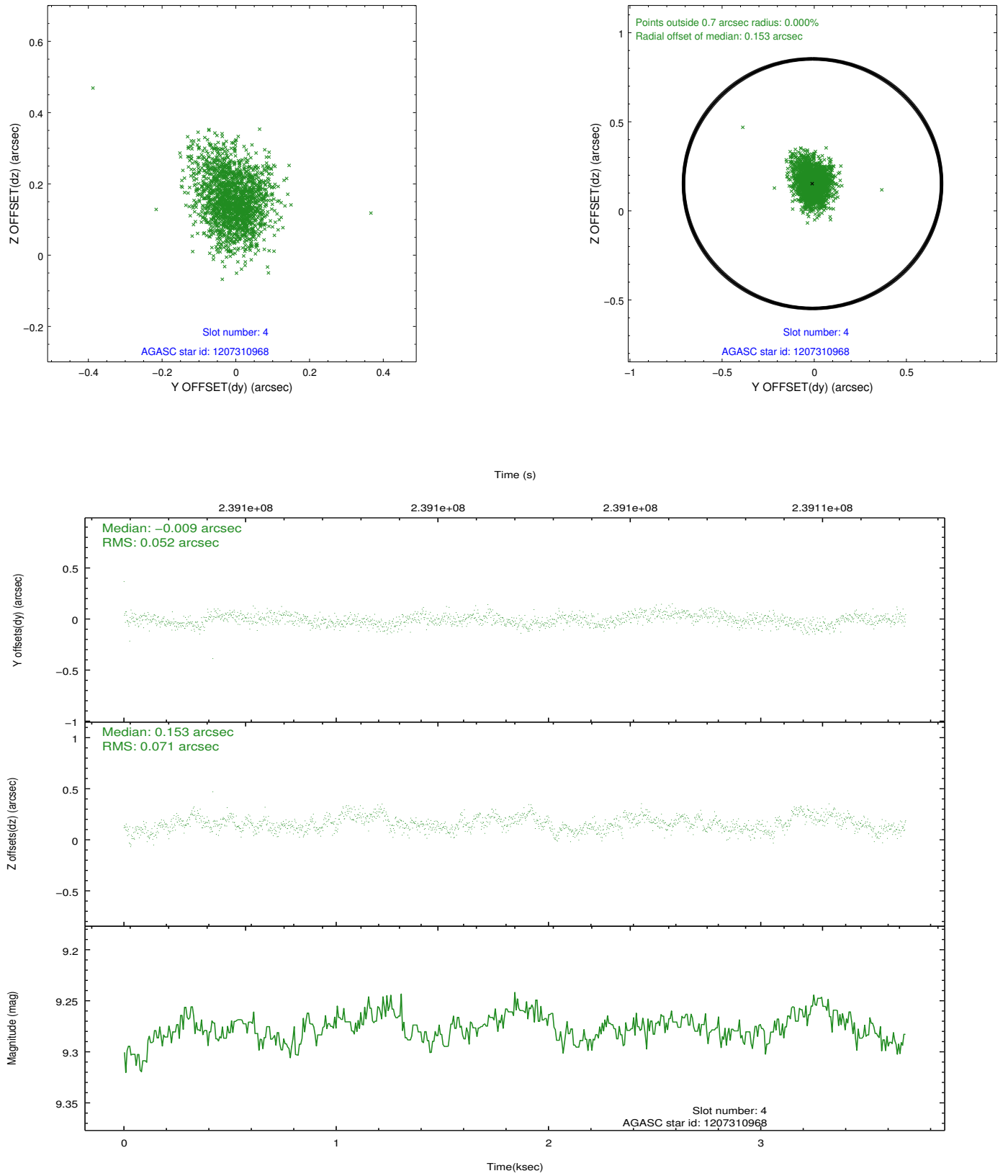
slot	status	id	mag	n_pts	med_dy	med_dz	dr1	dr2	ra	dec	mean_y	mean_z
0	FID	ACIS-I-2	7.14	898	-0.058	-0.060	0.009	0.018	0.000000	0.000000	-761.24	-839.43
1	FID	ACIS-I-4	7.18	899	0.151	0.055	0.006	0.010	0.000000	0.000000	2152.26	1065.99
2	FID	ACIS-I-5	7.23	898	-0.194	0.074	0.008	0.016	0.000000	0.000000	-1813.00	1065.82
3	GUIDE	1207197792	8.06	1797	0.071	-0.051	0.058	0.093	155.874427	-68.277970	229.62	-832.58
4	GUIDE	1207310968	9.28	1797	-0.009	0.153	0.092	0.154	156.362458	-68.103647	-627.40	-1124.94
5	GUIDE	1207317144	8.10	1797	0.066	-0.046	0.072	0.123	156.060854	-68.129554	-221.78	-1212.93
6	GUIDE	1207320680	8.88	1796	-0.115	0.073	0.086	0.132	156.002602	-67.790975	-665.08	-2350.88
7	GUIDE	1207331904	9.63	1790	-0.013	-0.128	0.127	0.209	158.407958	-68.816779	-1918.41	2371.53

2.4 Star Slots

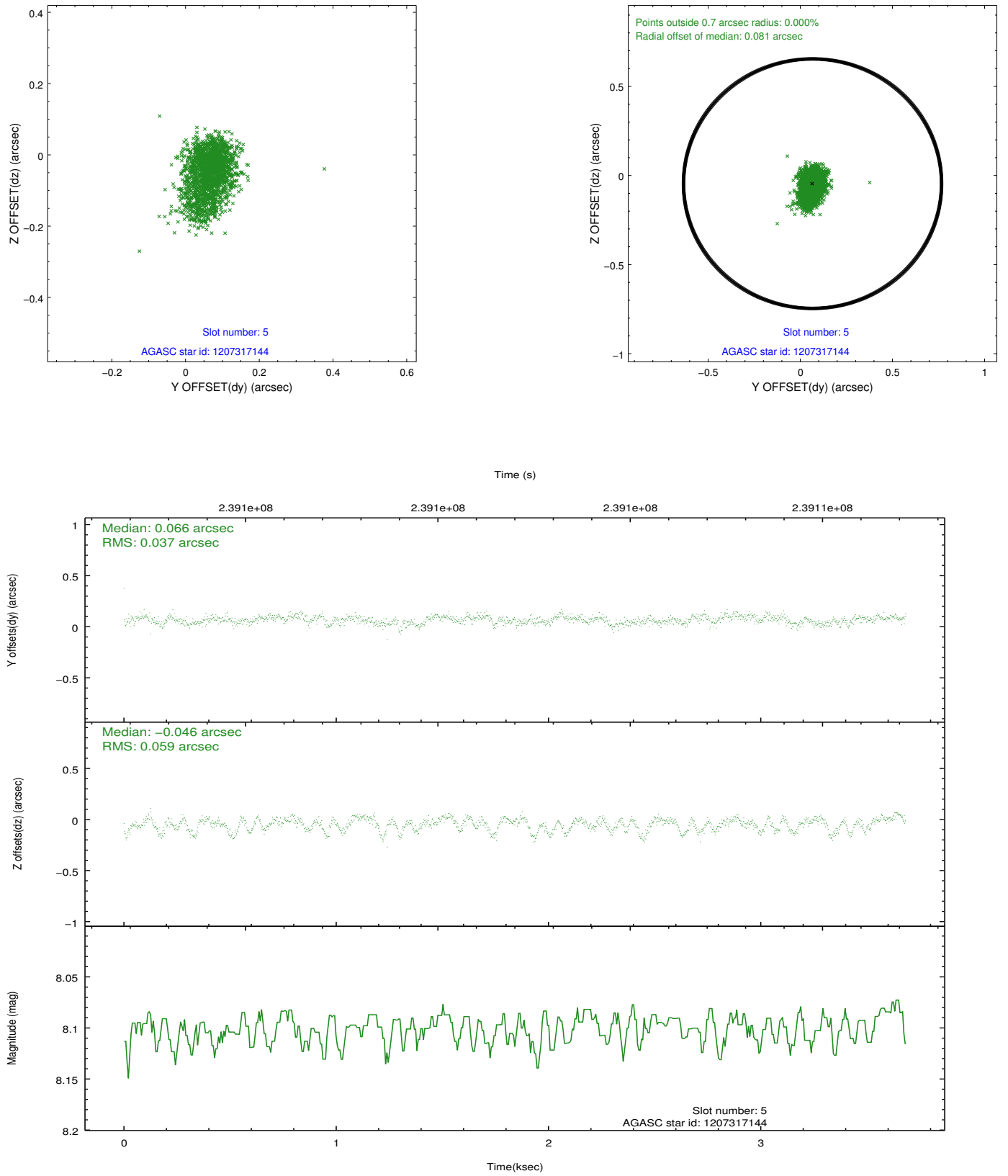
2.4.1 Slot 3



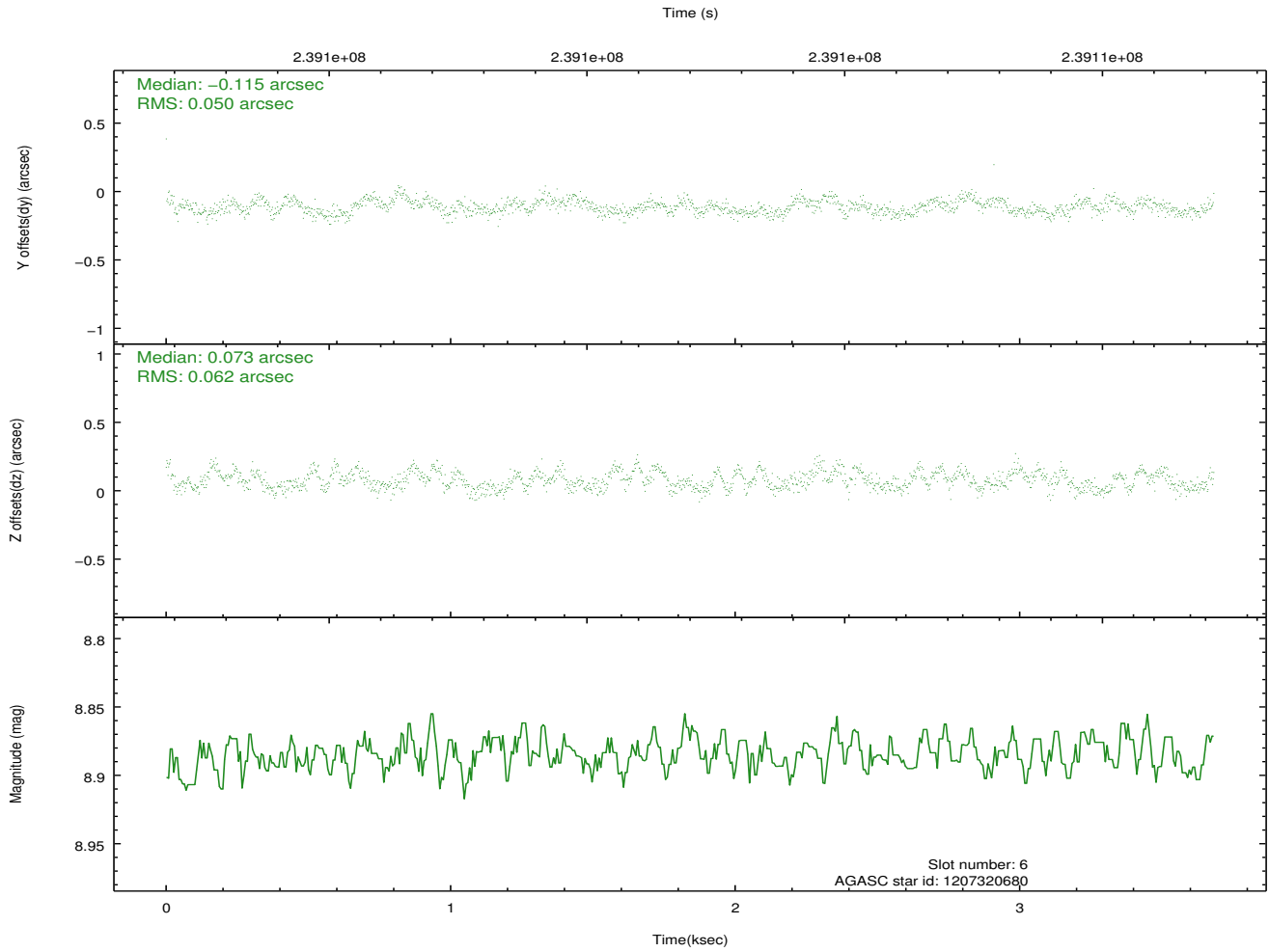
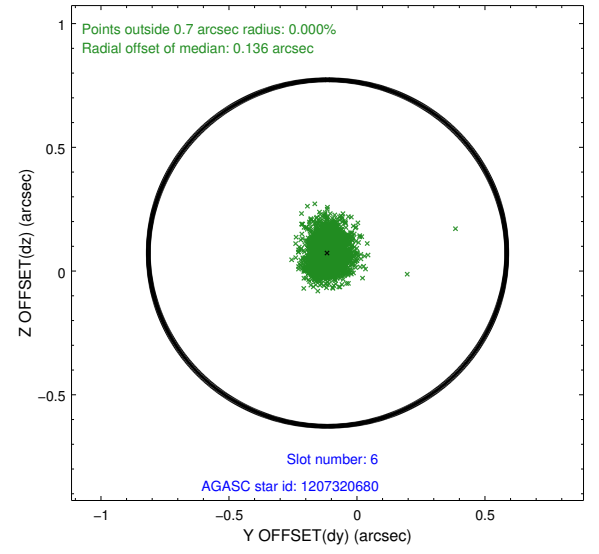
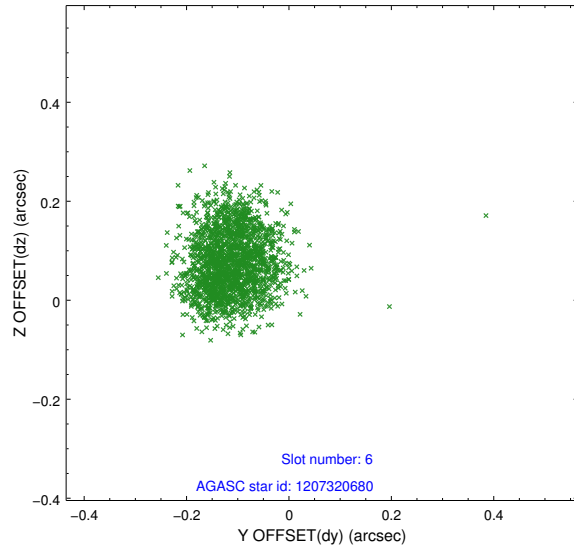
2.4.2 Slot 4



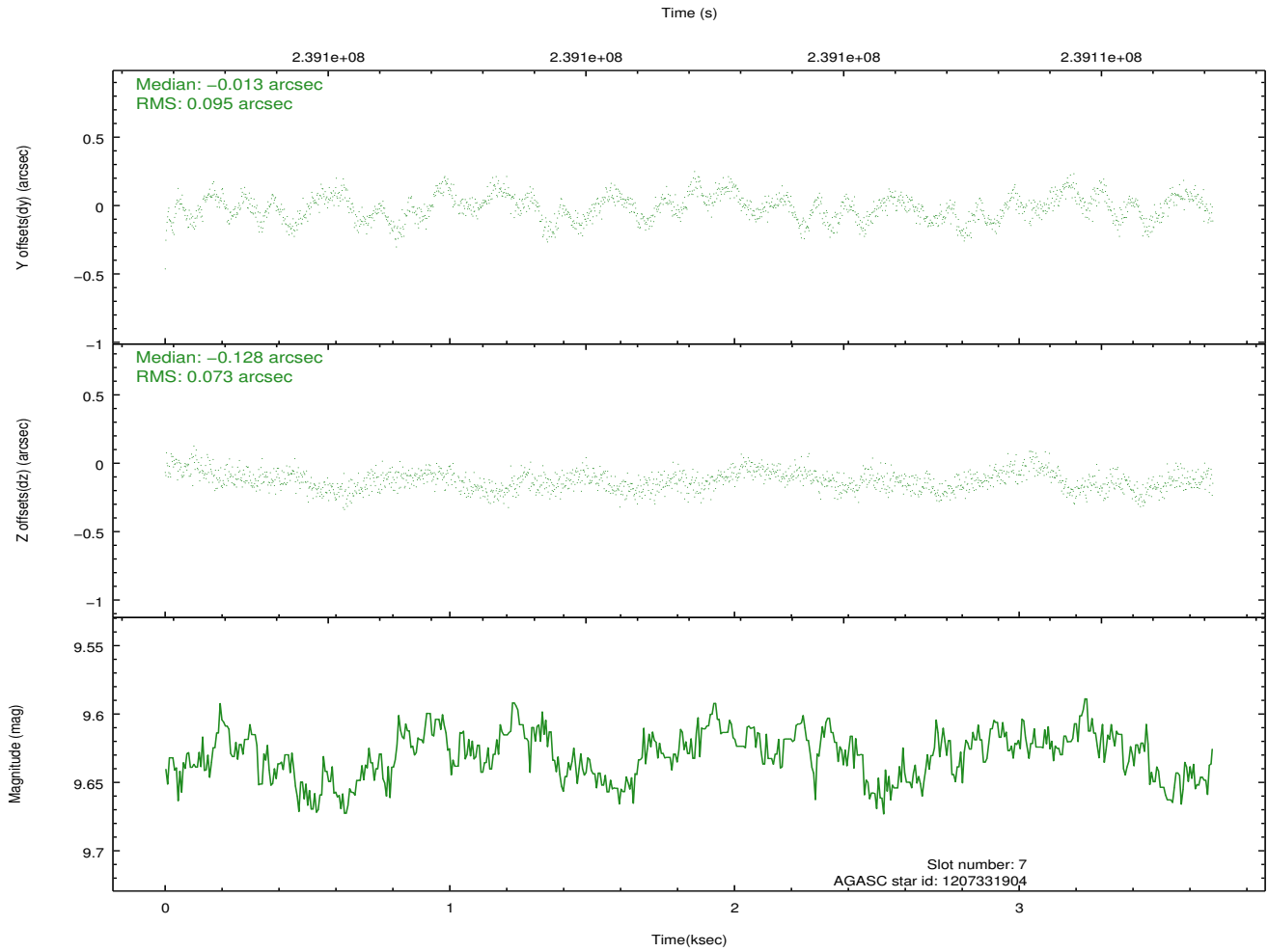
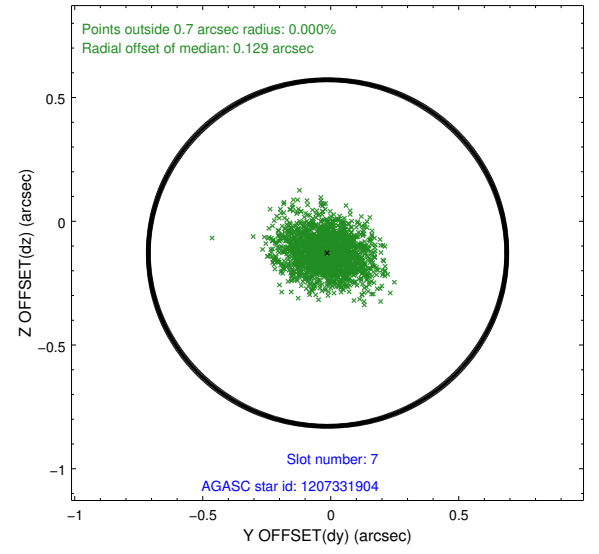
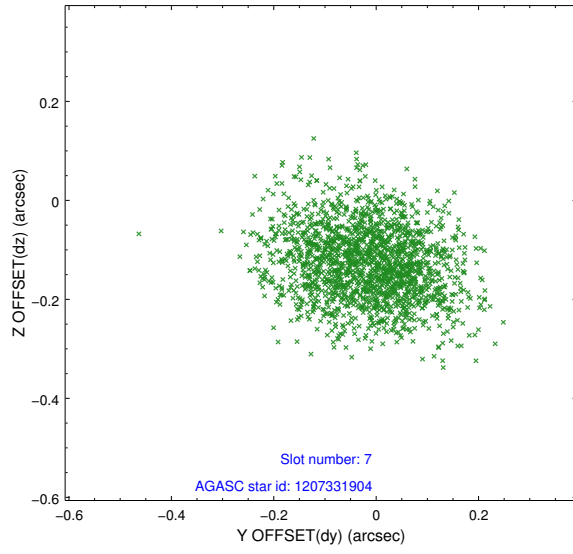
2.4.3 Slot 5



2.4.4 Slot 6

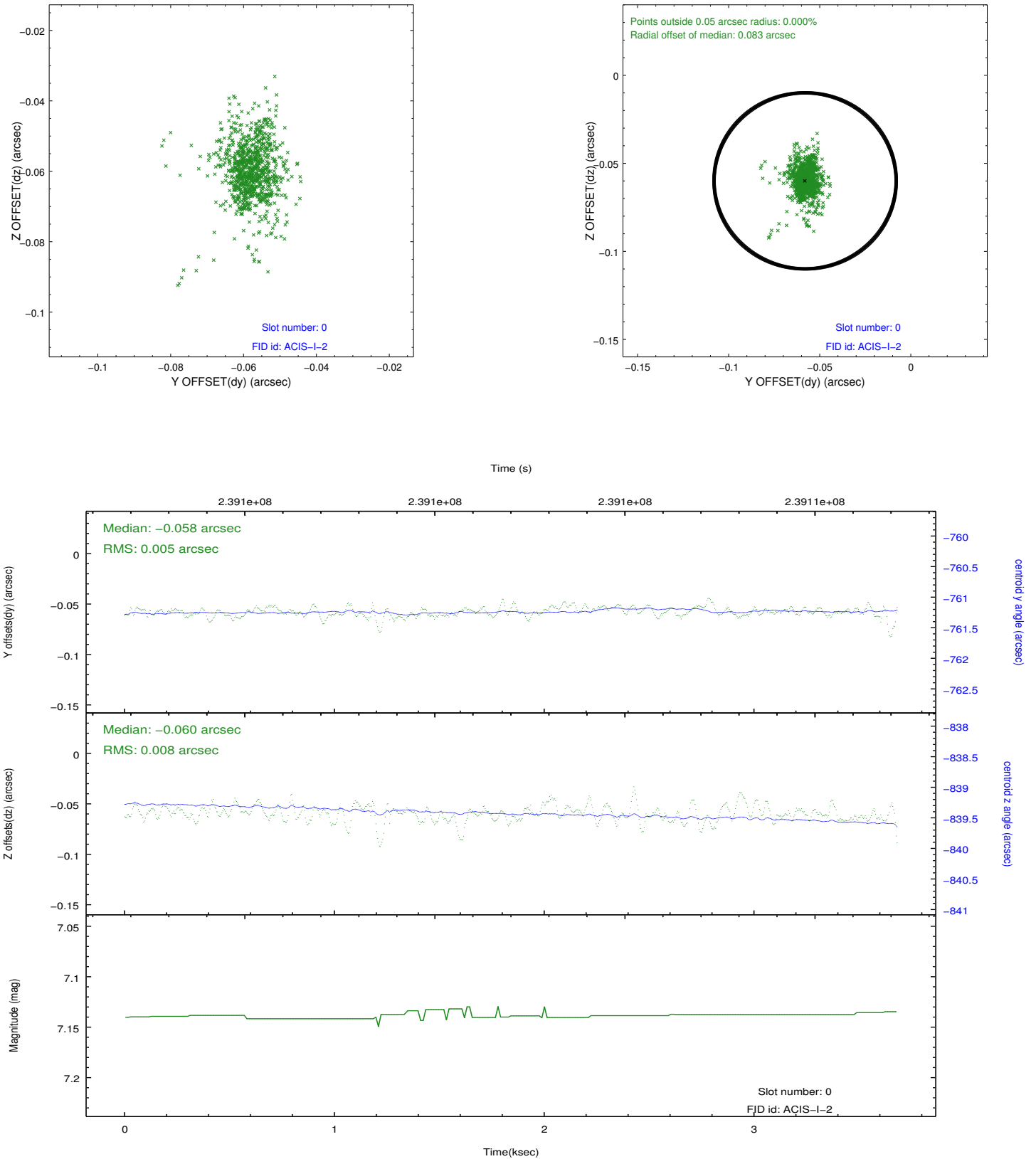


2.4.5 Slot 7

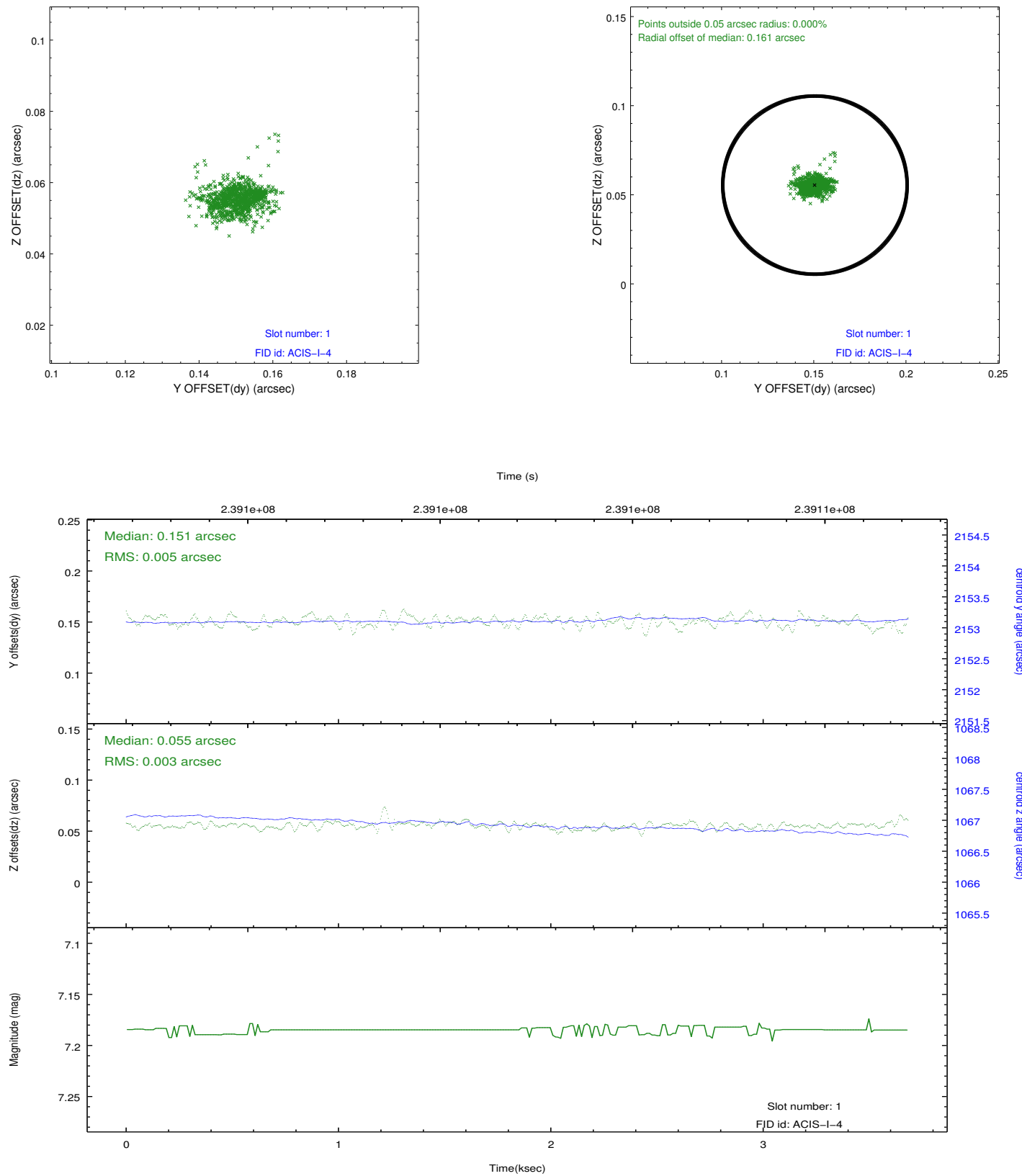


2.5 FID Slots

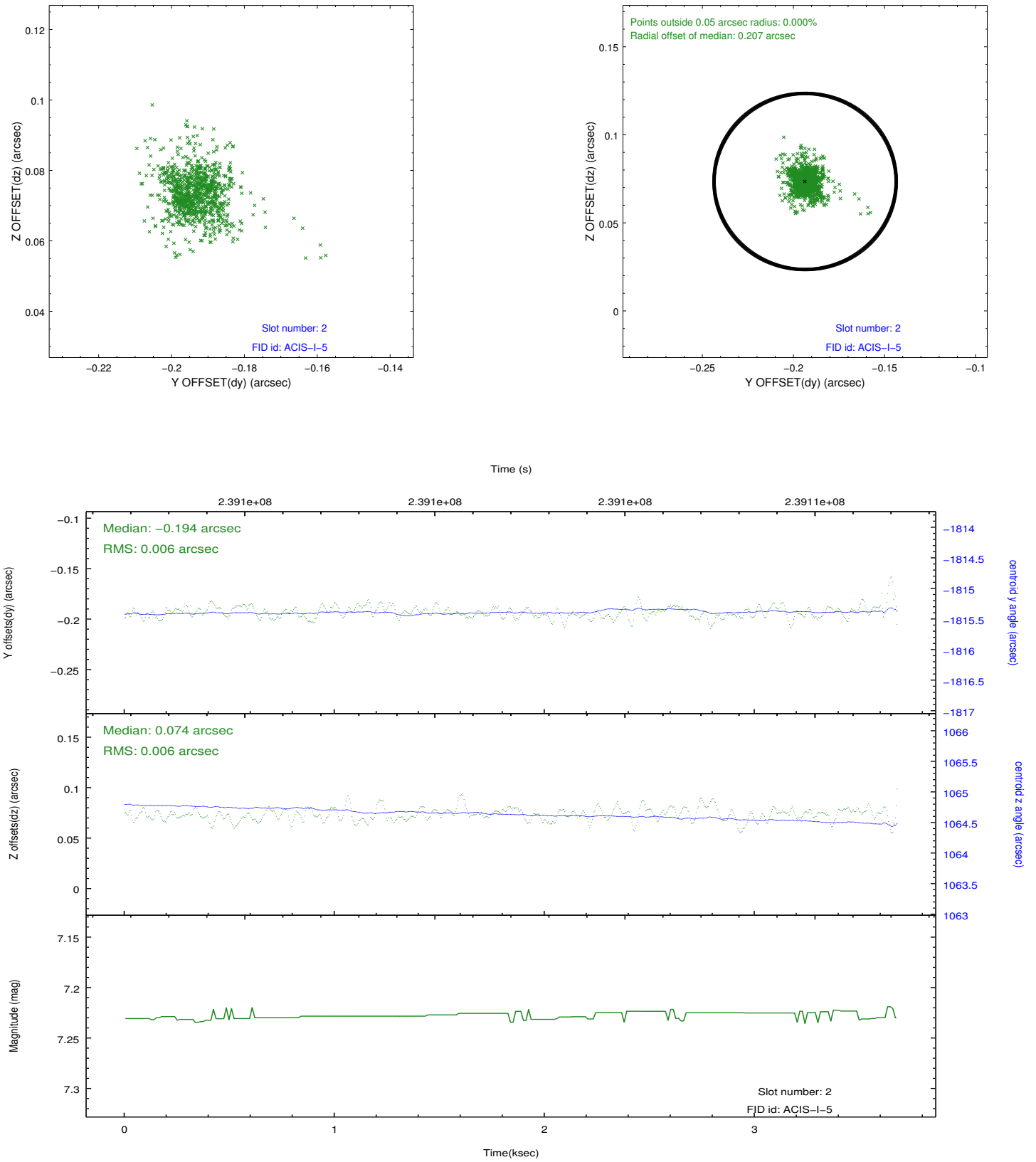
2.5.1 Slot 0



2.5.2 Slot 1



2.5.3 Slot 2



A Summary

A.1 Status

V&V Scientist	Jen Lauer
V&V Date (YYYY-MM-DD)	2013.01.23
V&V Edition	1
V&V Disposition and Status	OK
V&V Charge Time	3.707715

A.2 Comments