

# V&V Reference Report

## L2 ASCDS Version : 8.1.1

Observation 62263 - L2 Version 4  
Chandra X-Ray Center

L2 Processing Date : Nov 26 2009

## Contents

<b>1</b>	<b>Front</b>	<b>2</b>
<b>2</b>	<b>OBI</b>	<b>3</b>
2.1	OBI . . . . .	3
2.1.1	Images . . . . .	3
2.1.2	Bias . . . . .	3
2.1.3	Parameters . . . . .	4
2.1.4	Events . . . . .	4
2.2	Compared Parameters . . . . .	5
2.3	Star Slots . . . . .	6
2.4	FID Slots . . . . .	6
<b>A</b>	<b>Summary</b>	<b>7</b>
A.1	Status . . . . .	7
A.2	Comments . . . . .	7

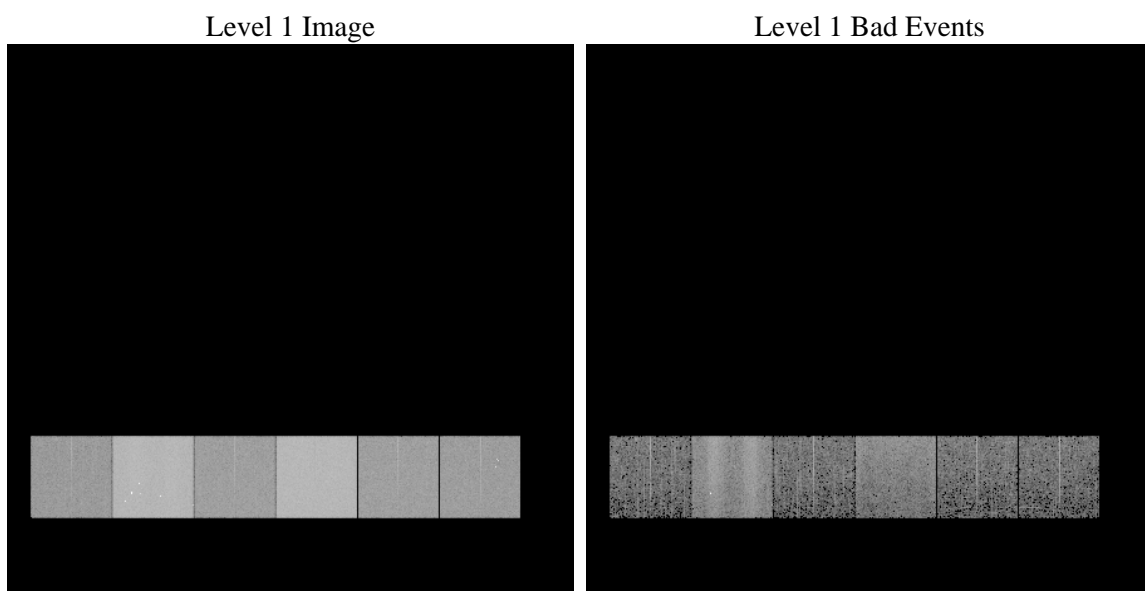
# 1 Front

seq_num	&#160	Sequence number
obs_id	62263	Observation id
title	ACIS-456789 diagnostics	Proposal title
observer	CHANDRA engineering request/realtime commanding	Principal investig
object	&#160	Source name
dtcycle	0	&#160
cycle	P	events from which exps? Prim/Second/Both
ra_targ	0.0	Observer's specified target RA
dec_targ	0.0	Observer's specified target Dec
ra_nom	354.42771980599	Nominal RA
dec_nom	52.970536067267	Nominal Dec
roll_nom	285.54241322411	Nominal Roll
revision	4	Processing version of data
ontime	2868.3131542653	Sum of GTIs [s]
livetime	2831.9928460151	Livetime [s]
ontime4	1094.8786944374	Sum of GTIs [s]
ontime5	3049.8077741787	Sum of GTIs [s]
ontime6	1225.1117060259	Sum of GTIs [s]
ontime7	2868.3131542653	Sum of GTIs [s]
ontime8	1214.7560748011	Sum of GTIs [s]
ontime9	1182.9782657325	Sum of GTIs [s]
l2events	899130	Number of level 2 events

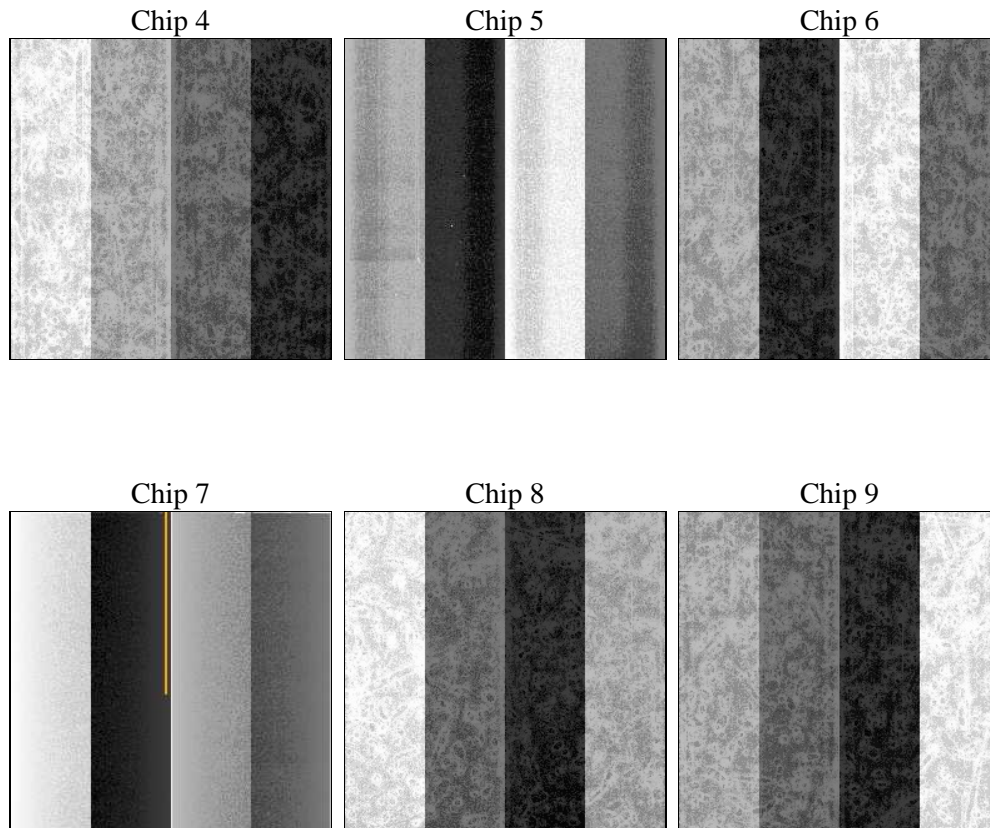
## 2 OBI

### 2.1 OBI

#### 2.1.1 Images



#### 2.1.2 Bias



### 2.1.3 Parameters

obi_num	0	Obi number	<table><tr><td>sched_exp_time</td><td>0.0</td><td>Scheduled observation exposure time</td></tr><tr><td>ontime</td><td>2868.3131542653</td><td>Sum of GTIs [s]</td></tr><tr><td>ontime4</td><td>1094.8786944374</td><td>Sum of GTIs [s]</td></tr><tr><td>ontime5</td><td>3049.8077741787</td><td>Sum of GTIs [s]</td></tr><tr><td>ontime6</td><td>1225.1117060259</td><td>Sum of GTIs [s]</td></tr><tr><td>ontime7</td><td>2868.3131542653</td><td>Sum of GTIs [s]</td></tr><tr><td>ontime8</td><td>1214.7560748011</td><td>Sum of GTIs [s]</td></tr><tr><td>ontime9</td><td>1182.9782657325</td><td>Sum of GTIs [s]</td></tr><tr><td>l1events</td><td>1063681</td><td>Number of level 1 events</td></tr></table>	sched_exp_time	0.0	Scheduled observation exposure time	ontime	2868.3131542653	Sum of GTIs [s]	ontime4	1094.8786944374	Sum of GTIs [s]	ontime5	3049.8077741787	Sum of GTIs [s]	ontime6	1225.1117060259	Sum of GTIs [s]	ontime7	2868.3131542653	Sum of GTIs [s]	ontime8	1214.7560748011	Sum of GTIs [s]	ontime9	1182.9782657325	Sum of GTIs [s]	l1events	1063681	Number of level 1 events
sched_exp_time	0.0	Scheduled observation exposure time																												
ontime	2868.3131542653	Sum of GTIs [s]																												
ontime4	1094.8786944374	Sum of GTIs [s]																												
ontime5	3049.8077741787	Sum of GTIs [s]																												
ontime6	1225.1117060259	Sum of GTIs [s]																												
ontime7	2868.3131542653	Sum of GTIs [s]																												
ontime8	1214.7560748011	Sum of GTIs [s]																												
ontime9	1182.9782657325	Sum of GTIs [s]																												
l1events	1063681	Number of level 1 events																												
ascdsver	8.1.1	ASCDS version number																												
caldsver	4.1.4	&#160																												
date	2009-11-26T09:46:34	Date and time of file creation																												
revision	3	Processing version of data																												

### 2.1.4 Events

	ccd 4	ccd 5	ccd 6	ccd 7	ccd 8	ccd 9
level 1 events	107289	289010	126421	293344	128459	119158
rejected events	18081	48899	18020	30536	18421	16923
rejected %	16%	16%	14%	10%	14%	14%

## 2.2 Compared Parameters

Parameter	Planned	Actual	Parameter	Planned	Actual
Instrument	ACIS	ACIS	Obspar format version number	6	6
Detector	ACIS-456789	ACIS-456789	Obspar file type	PREDICTED	ACTUAL
Grating	NONE	NONE	Obspar update status	NONE	UPDATED
Data mode	FAINT	FAINT	On-chip summing requested	N	N
Observation mode	SECONDARY	SECONDARY	Subarray requested	NONE	NONE
Pointing RA	0	354.4277198059946	Alternating exposures requested	N	N
Pointing Dec	0	52.97053606726666	Primary exposure time	0.000000	3.2
Pointing Roll	0.0	285.5424132241141			
SIM focus pos (mm)	-0.684267	-0.6828225247311905			
SIM defocus (mm)	0	0.8505141146731063			
SIM translation stage pos (mm)	-190.132523	250.466033080201			
SIM translation stage offset (mm)	0	-0.01005468664627074			
Observation start time	61947920.088	61947919.319661			
Observation start date	1999-12-18T23:45:20	1999-12-18T23:45:19			
Observation end time	61955220.138	61955219.369925			
Observation end date	1999-12-19T01:47:00	1999-12-19T01:46:59			
Read mode	TIMED	TIMED			

## 2.3 Star Slots

## 2.4 FID Slots

# A Summary

## A.1 Status

V&V Scientist	Jen Lauer
V&V Date (YYYY-MM-DD)	2010.01.25
V&V Edition	1
V&V Disposition and Status	OK
V&V Charge Time	2.8683131542653

## A.2 Comments

The focal plane temperature is approximately -110C during this observation. This reprocessing of the data applies no CTI correction because none is available for this temperature at present.

The ACIS CTI correction has not been calibrated at this temperature, because it was early in the mission, and ACIS had not yet been lowered to the standard -119.7 C. Both front and back illuminated chips are affected. However a T\_GAIN correction has been applied to the BI chips (ACIS-5 and ACIS-7) data included here.

The ACIS spectral response calibration is less accurate at these warmer temperatures than it is at -119.7 C. Users whose science objectives depend on the most accurate spectral response (ie: fitting line-rich spectra) may notice an effect. Users whose science objectives do not depend on the most accurate spectral response should not notice an effect.