

V&V Reference Report

L2 ASCDS Version : 8.4.5

Observation 62153 - L2 Version 4
Chandra X-Ray Center

L2 Processing Date : Aug 23 2012

Contents

1	Front	2
2	OBI	3
2.1	OBI	3
2.1.1	Images	3
2.1.2	Bias	3
2.1.3	Parameters	4
2.1.4	Events	4
2.2	Compared Parameters	5
2.3	Star Slots	6
2.4	FID Slots	6
A	Summary	7
A.1	Status	7
A.2	Comments	7

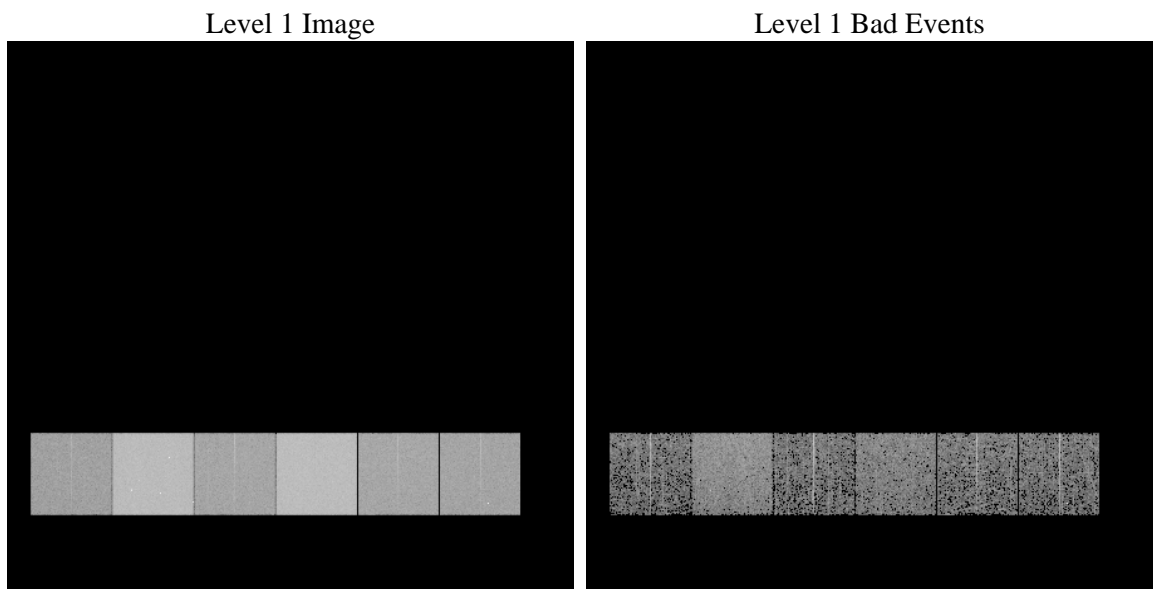
1 Front

seq_num	 	Sequence number
obs_id	62153	Observation id
title	ACIS-456789 diagnostics	Proposal title
observer	CHANDRA engineering request/realtime commanding	Principal investig
object	 	Source name
dtcycle	0	
cycle	P	events from which exps? Prim/Second/Both
ra_targ	0.0	Observer's specified target RA [deg]
dec_targ	0.0	Observer's specified target Dec [deg]
ra_nom	245.85139433512	Nominal RA [deg]
dec_nom	-13.028971697666	Nominal Dec [deg]
roll_nom	80.518317440703	Nominal Roll [deg]
revision	4	Processing version of data
ontime	2955.8186604977	Sum of GTIs [s]
livetime	2918.3903048381	Livetime [s]
ontime4	1129.9893182963	Sum of GTIs [s]
ontime5	3160.0016974658	Sum of GTIs [s]
ontime6	1276.9682808518	Sum of GTIs [s]
ontime7	2955.8186604977	Sum of GTIs [s]
ontime8	1312.6198105216	Sum of GTIs [s]
ontime9	1251.0400506854	Sum of GTIs [s]
l2events	926416	Number of level 2 events

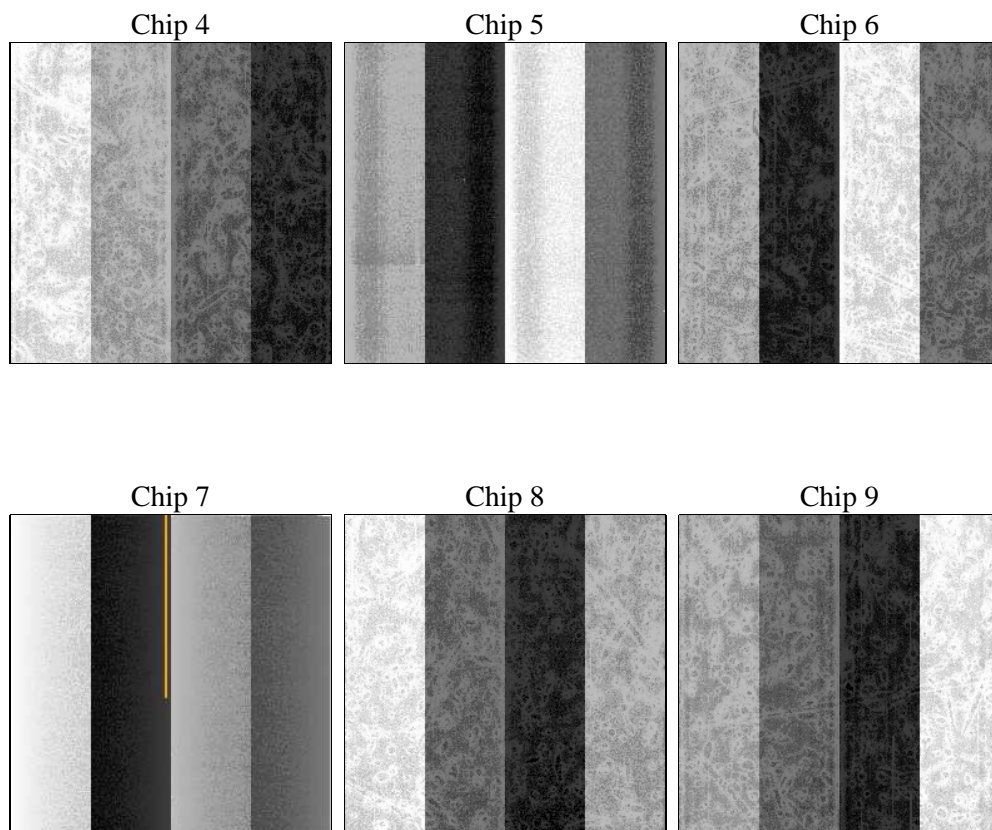
2 OBI

2.1 OBI

2.1.1 Images



2.1.2 Bias



2.1.3 Parameters

obi_num	0	Obi number	sched_exp_time	0.0	[s] Scheduled observation exposure time
ascdsver	8.4.5	Processing system revision	ontime	2955.8186604977	Sum of GTIs [s]
caldsver	4.5.1.1	 	ontime4	1129.9893182963	Sum of GTIs [s]
date	2012-08-23T17:37:39	Date and time of file creation	ontime5	3160.0016974658	Sum of GTIs [s]
revision	4	Processing version of data	ontime6	1276.9682808518	Sum of GTIs [s]
			ontime7	2955.8186604977	Sum of GTIs [s]
			ontime8	1312.6198105216	Sum of GTIs [s]
			ontime9	1251.0400506854	Sum of GTIs [s]
			l1events	1064164	Number of level 1 events

2.1.4 Events

	ccd 4	ccd 5	ccd 6	ccd 7	ccd 8	ccd 9		ccd 4	ccd 5	ccd 6	ccd 7	ccd 8	ccd 9
level 1 events	107898	278698	130837	288334	134791	123606	grade 0 events	54359	65109	63827	69587	66440	60698
rejected events	12331	26584	13507	17395	14207	13414		50%	23%	48%	24%	49%	49%
rejected %	11%	9%	10%	6%	10%	10%	grade 1 events	344	262	348	234	377	742
								0%	0%	0%	0%	0%	0%
							grade 2 events	16749	87220	20376	60354	21168	19418
								15%	31%	15%	20%	15%	15%
							grade 3 events	5805	17039	7326	27930	7747	6873
								5%	6%	5%	9%	5%	5%
							grade 4 events	5793	16767	7344	27705	7676	6845
								5%	6%	5%	9%	5%	5%
							grade 5 events	843	5618	1028	3847	1065	997
								0%	2%	0%	1%	0%	0%
							grade 6 events	12861	65979	18457	85363	17553	16358
								11%	23%	14%	29%	13%	13%
							grade 7 events	11144	20704	12131	13314	12765	11675
								10%	7%	9%	4%	9%	9%

2.2 Compared Parameters

Parameter	Planned	Actual
Instrument	ACIS	ACIS
Detector	ACIS-456789	ACIS-456789
Grating	NONE	NONE
Data mode	FAINT	FAINT
Observation mode	SECONDARY	SECONDARY
[deg] Pointing RA	0	245.8513943351211
[deg] Pointing Dec	0	-13.02897169766601
[deg] Pointing Roll	0.0	80.51831744070299
[mm] SIM focus pos	-0.684267	-0.7809083437167272
[mm] SIM defocus	0	0.7524282956875696
[mm] SIM translation stage pos	-190.132523	250.4635187648994
[mm] SIM translation stage offset	0	-0.007540371344731511
[s] Observation start time (MET)	67842109.05599999	67842108.287818
Observation start date	2000-02-25T05:01:49	2000-02-25T05:01:48
[s] Observation end time (MET)	67888209.458	67888208.689503
Observation end date	2000-02-25T17:50:09	2000-02-25T17:50:08
Read mode	TIMED	TIMED

Parameter	Planned	Actual
Obspar format version number	7	7
Obspar file type	PREDICTED	ACTUAL
Obspar update status	NONE	UPDATED
On-chip summing requested	N	N
Subarray requested	NONE	NONE
Alternating exposures requested	N	N
[s] Primary exposure time	0.000000	3.2

2.3 Star Slots

2.4 FID Slots

A Summary

A.1 Status

V&V Scientist	Jen Lauer
V&V Date (YYYY-MM-DD)	2012.08.24
V&V Edition	1
V&V Disposition and Status	OK
V&V Charge Time	2.9558186604977

A.2 Comments