

V&V Reference Report

L2 ASCDS Version : 8.4.5

Observation 62073 - L2 Version 5
Chandra X-Ray Center

L2 Processing Date : Aug 25 2012

Contents

1	Front	2
2	OBI	3
2.1	OBI	3
2.1.1	Images	3
2.1.2	Bias	3
2.1.3	Parameters	4
2.1.4	Events	4
2.2	Compared Parameters	5
2.3	Star Slots	6
2.4	FID Slots	6
A	Summary	7
A.1	Status	7
A.2	Comments	7

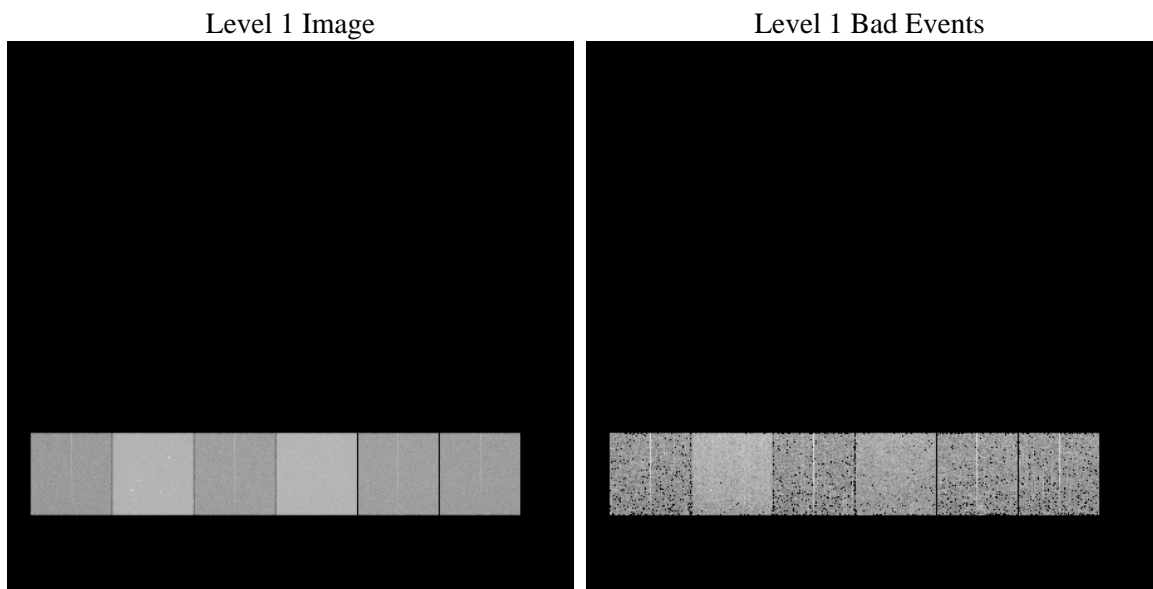
1 Front

seq_num	 	Sequence number
obs_id	62073	Observation id
title	ACIS-456789 diagnostics	Proposal title
observer	CHANDRA engineering request/realtime commanding	Principal investig
object	 	Source name
dtcycle	0	
cycle	P	events from which exps? Prim/Second/Both
ra_targ	0.0	Observer's specified target RA [deg]
dec_targ	0.0	Observer's specified target Dec [deg]
ra_nom	80.052563469841	Nominal RA [deg]
dec_nom	59.988201368969	Nominal Dec [deg]
roll_nom	303.57577194651	Nominal Roll [deg]
revision	5	Processing version of data
ontime	4220.8906955868	Sum of GTIs [s]
livetime	4167.443236084	Livetime [s]
ontime4	1672.3751798272	Sum of GTIs [s]
ontime5	4509.2953536958	Sum of GTIs [s]
ontime6	1811.7397897691	Sum of GTIs [s]
ontime7	4220.8906955868	Sum of GTIs [s]
ontime8	1873.3196094483	Sum of GTIs [s]
ontime9	1779.3294995427	Sum of GTIs [s]
l2events	1274397	Number of level 2 events

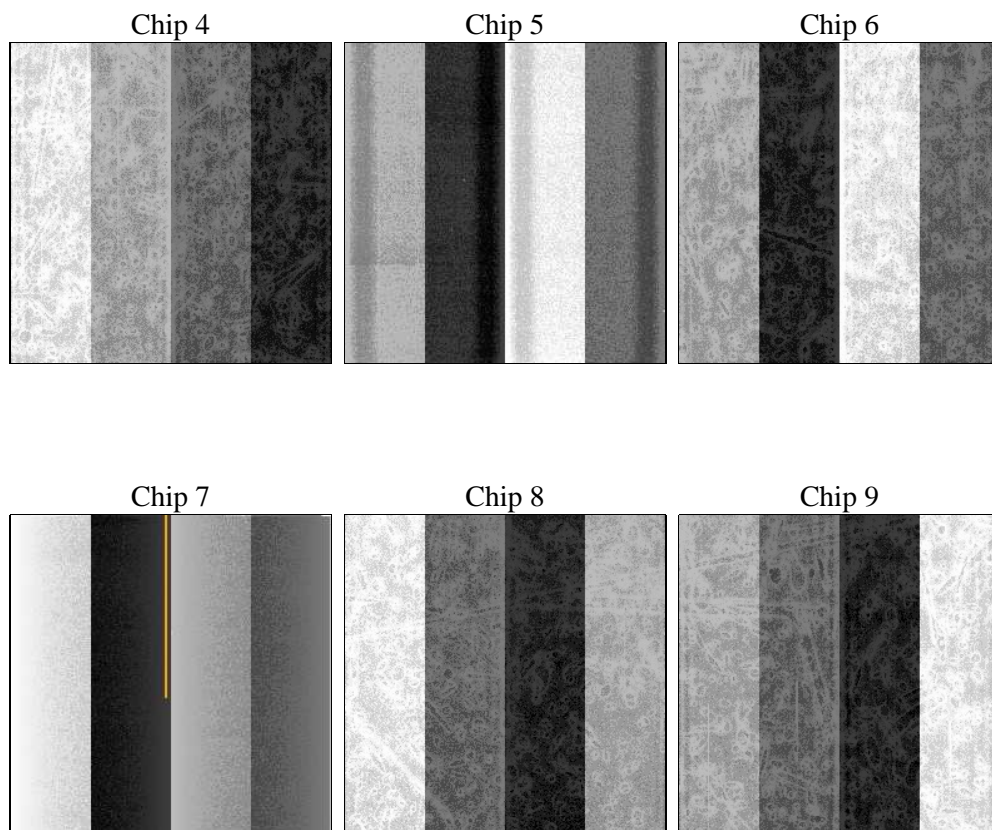
2 OBI

2.1 OBI

2.1.1 Images



2.1.2 Bias



2.1.3 Parameters

obi_num	0	Obi number	sched_exp_time	0.0	[s] Scheduled observation exposure time
ascdsver	8.4.5	Processing system revision	ontime	4220.8906955868	Sum of GTIs [s]
caldsver	4.5.1.1	 	ontime4	1672.3751798272	Sum of GTIs [s]
date	2012-08-26T00:04:38	Date and time of file creation	ontime5	4509.2953536958	Sum of GTIs [s]
revision	5	Processing version of data	ontime6	1811.7397897691	Sum of GTIs [s]
			ontime7	4220.8906955868	Sum of GTIs [s]
			ontime8	1873.3196094483	Sum of GTIs [s]
			ontime9	1779.3294995427	Sum of GTIs [s]
			l1events	1461056	Number of level 1 events

2.1.4 Events

	ccd 4	ccd 5	ccd 6	ccd 7	ccd 8	ccd 9		ccd 4	ccd 5	ccd 6	ccd 7	ccd 8	ccd 9
level 1 events	153813	382126	178379	394074	183962	168702	grade 0 events	77448	89564	87685	95952	91013	82808
rejected events	16980	36528	18131	23971	19106	17555		50%	23%	49%	24%	49%	49%
rejected %	11%	9%	10%	6%	10%	10%	grade 1 events	519	408	504	254	507	499
								0%	0%	0%	0%	0%	0%
							grade 2 events	23908	119128	27856	82218	28962	26590
								15%	31%	15%	20%	15%	15%
							grade 3 events	8579	23322	9833	38105	10220	9429
								5%	6%	5%	9%	5%	5%
							grade 4 events	8440	23227	9812	37881	10400	9338
								5%	6%	5%	9%	5%	5%
							grade 5 events	1184	7513	1425	5294	1473	1309
								0%	1%	0%	1%	0%	0%
							grade 6 events	18458	90590	25062	116217	24261	22982
								12%	23%	14%	29%	13%	13%
							grade 7 events	15277	28374	16202	18153	17126	15747
								9%	7%	9%	4%	9%	9%

2.2 Compared Parameters

Parameter	Planned	Actual	Parameter	Planned	Actual
Instrument	ACIS	ACIS	Obspar format version number	7	7
Detector	ACIS-456789	ACIS-456789	Obspar file type	PREDICTED	ACTUAL
Grating	NONE	NONE	Obspar update status	NONE	UPDATED
Data mode	FAINT	FAINT	On-chip summing requested	N	N
Observation mode	SECONDARY	SECONDARY	Subarray requested	NONE	NONE
[deg] Pointing RA	0	80.05256346984129	Alternating exposures requested	N	N
[deg] Pointing Dec	0	59.98820136896872	[s] Primary exposure time	0.000000	3.2
[deg] Pointing Roll	0.0	303.5757719465095			
[mm] SIM focus pos	-0.684267	-0.7809083437167272			
[mm] SIM defocus	0	0.7524282956875696			
[mm] SIM translation stage pos	-190.132523	250.4635187648994			
[mm] SIM translation stage offset	0	-0.007540371344731511			
[s] Observation start time (MET)	73094362.998	73094362.229992			
Observation start date	2000-04-25T23:59:23	2000-04-25T23:59:22			
[s] Observation end time (MET)	73141939.40000001	73141938.63173801			
Observation end date	2000-04-26T13:12:19	2000-04-26T13:12:18			
Read mode	TIMED	TIMED			

2.3 Star Slots

2.4 FID Slots

A Summary

A.1 Status

V&V Scientist	Jen Lauer
V&V Date (YYYY-MM-DD)	2012.08.28
V&V Edition	1
V&V Disposition and Status	OK
V&V Charge Time	4.2208906955868

A.2 Comments