

# V&V Reference Report

## L2 ASCDS Version : 8.4.5

Observation 62063 - L2 Version 5  
Chandra X-Ray Center

L2 Processing Date : Aug 26 2012

## Contents

<b>1</b>	<b>Front</b>	<b>2</b>
<b>2</b>	<b>OBI</b>	<b>3</b>
2.1	OBI . . . . .	3
2.1.1	Images . . . . .	3
2.1.2	Bias . . . . .	3
2.1.3	Parameters . . . . .	4
2.1.4	Events . . . . .	4
2.2	Compared Parameters . . . . .	5
2.3	Star Slots . . . . .	6
2.4	FID Slots . . . . .	6
<b>A</b>	<b>Summary</b>	<b>7</b>
A.1	Status . . . . .	7
A.2	Comments . . . . .	7

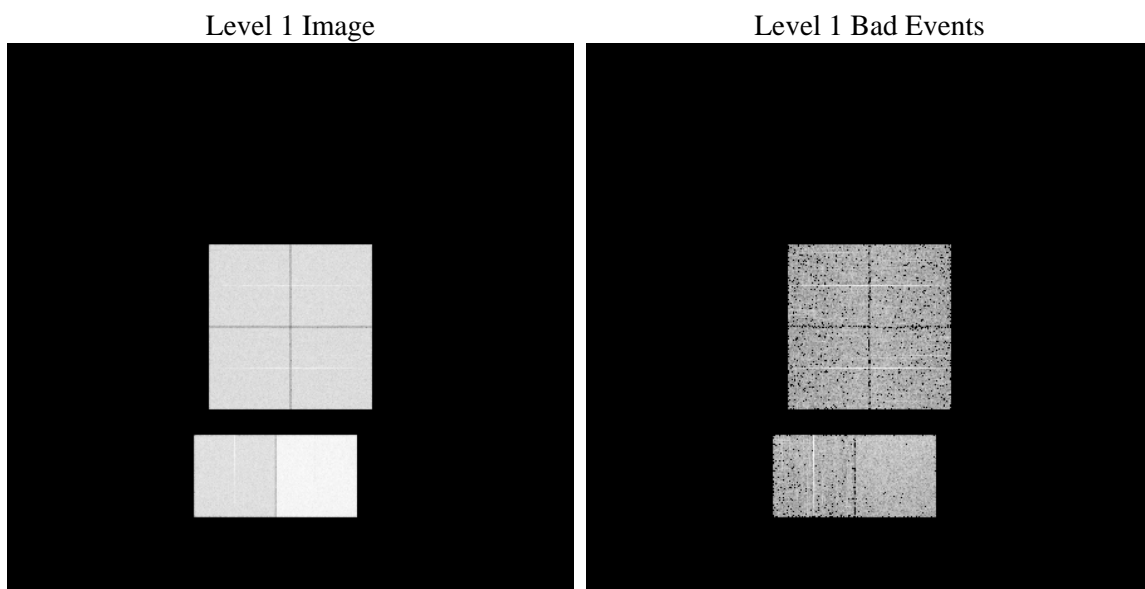
# 1 Front

seq_num	&#160	Sequence number
obs_id	62063	Observation id
title	ACIS-012367 diagnostics	Proposal title
observer	CHANDRA engineering request/realtime commanding	Principal investig
object	&#160	Source name
dtcycle	0	&#160
cycle	P	events from which exps? Prim/Second/Both
ra_targ	0.0	Observer's specified target RA [deg]
dec_targ	0.0	Observer's specified target Dec [deg]
ra_nom	16.609485676487	Nominal RA [deg]
dec_nom	-60.843864833421	Nominal Dec [deg]
roll_nom	153.22006828873	Nominal Roll [deg]
revision	5	Processing version of data
ontime	4968.714381516	Sum of GTIs [s]
livetime	4905.7975282166	Livetime [s]
ontime0	2044.2822950631	Sum of GTIs [s]
ontime1	2115.6262248456	Sum of GTIs [s]
ontime2	2006.4355583936	Sum of GTIs [s]
ontime3	1990.230338499	Sum of GTIs [s]
ontime6	2155.5234379172	Sum of GTIs [s]
ontime7	4968.714381516	Sum of GTIs [s]
l2events	1251761	Number of level 2 events

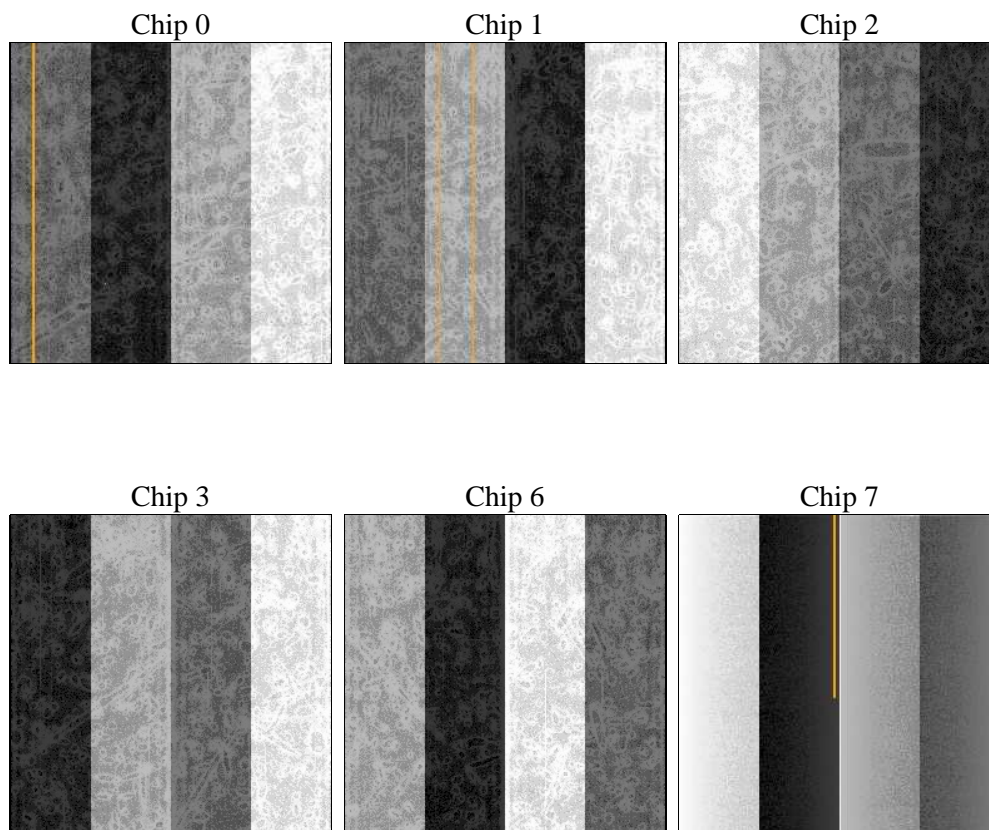
## 2 OBI

### 2.1 OBI

#### 2.1.1 Images



#### 2.1.2 Bias



### 2.1.3 Parameters

obi_num	0	Obi number	sched_exp_time	0.0	[s] Scheduled observation exposure time
ascdsver	8.4.5	Processing system revision	ontime	4968.714381516	Sum of GTIs [s]
caldsver	4.5.1.1	&#160	ontime0	2044.2822950631	Sum of GTIs [s]
date	2012-08-26T23:53:56	Date and time of file creation	ontime1	2115.6262248456	Sum of GTIs [s]
revision	5	Processing version of data	ontime2	2006.4355583936	Sum of GTIs [s]
			ontime3	1990.230338499	Sum of GTIs [s]
			ontime6	2155.5234379172	Sum of GTIs [s]
			ontime7	4968.714381516	Sum of GTIs [s]
			l1events	1425233	Number of level 1 events

### 2.1.4 Events

	ccd 0	ccd 1	ccd 2	ccd 3	ccd 6	ccd 7		ccd 0	ccd 1	ccd 2	ccd 3	ccd 6	ccd 7
level 1 events	188882	194926	186698	187645	210463	456619	grade 0 events	94000	97672	94302	94143	103248	110708
rejected events	18212	18051	17812	19418	21166	27185		49%	50%	50%	50%	49%	24%
rejected %	9%	9%	9%	10%	10%	5%	grade 1 events	536	531	550	536	610	300
								0%	0%	0%	0%	0%	0%
							grade 2 events	30091	30948	29494	29161	32597	95046
								15%	15%	15%	15%	15%	20%
							grade 3 events	10759	11345	10756	10789	11898	43694
								5%	5%	5%	5%	5%	9%
							grade 4 events	10995	11184	10642	10763	11511	43735
								5%	5%	5%	5%	5%	9%
							grade 5 events	1310	1389	1381	1361	1542	6286
								0%	0%	0%	0%	0%	1%
							grade 6 events	24825	25726	23977	23657	30321	136504
								13%	13%	12%	12%	14%	29%
							grade 7 events	16366	16131	15596	17235	18736	20346
								8%	8%	8%	9%	8%	4%

## 2.2 Compared Parameters

Parameter	Planned	Actual	Parameter	Planned	Actual
Instrument	ACIS	ACIS	Obspar format version number	7	7
Detector	ACIS-012367	ACIS-012367	Obspar file type	PREDICTED	ACTUAL
Grating	NONE	NONE	Obspar update status	NONE	UPDATED
Data mode	FAINT	FAINT	On-chip summing requested	N	N
Observation mode	SECONDARY	SECONDARY	Subarray requested	NONE	NONE
[deg] Pointing RA	0	16.60948567648717	Alternating exposures requested	N	N
[deg] Pointing Dec	0	-60.8438648334206	[s] Primary exposure time	3.2	3.2
[deg] Pointing Roll	0.0	153.2200682887251			
[mm] SIM focus pos	-0.782348	-0.6828225247311905			
[mm] SIM defocus	0	0.8505141146731063			
[mm] SIM translation stage pos	-233.592463	250.466033080201			
[mm] SIM translation stage offset	0	-0.01005468664627074			
[s] Observation start time (MET)	74053490.38365901	74053489.61519501			
Observation start date	2000-05-07T02:24:50	2000-05-07T02:24:49			
[s] Observation end time (MET)	74063418.534024	74063417.765559			
Observation end date	2000-05-07T05:10:19	2000-05-07T05:10:17			
Read mode	TIMED	TIMED			

## 2.3 Star Slots

## 2.4 FID Slots

## A Summary

### A.1 Status

V&V Scientist	Jen Lauer
V&V Date (YYYY-MM-DD)	2012.08.29
V&V Edition	1
V&V Disposition and Status	OK
V&V Charge Time	4.968714381516

### A.2 Comments