

V&V Reference Report

L2 ASCDS Version : 8.4.5

Observation 62043 - L2 Version 5
Chandra X-Ray Center

L2 Processing Date : Aug 28 2012

Contents

1	Front	2
2	OBI	3
2.1	OBI	3
2.1.1	Images	3
2.1.2	Bias	3
2.1.3	Parameters	4
2.1.4	Events	4
2.2	Compared Parameters	5
2.3	Star Slots	6
2.4	FID Slots	6
A	Summary	7
A.1	Status	7
A.2	Comments	7

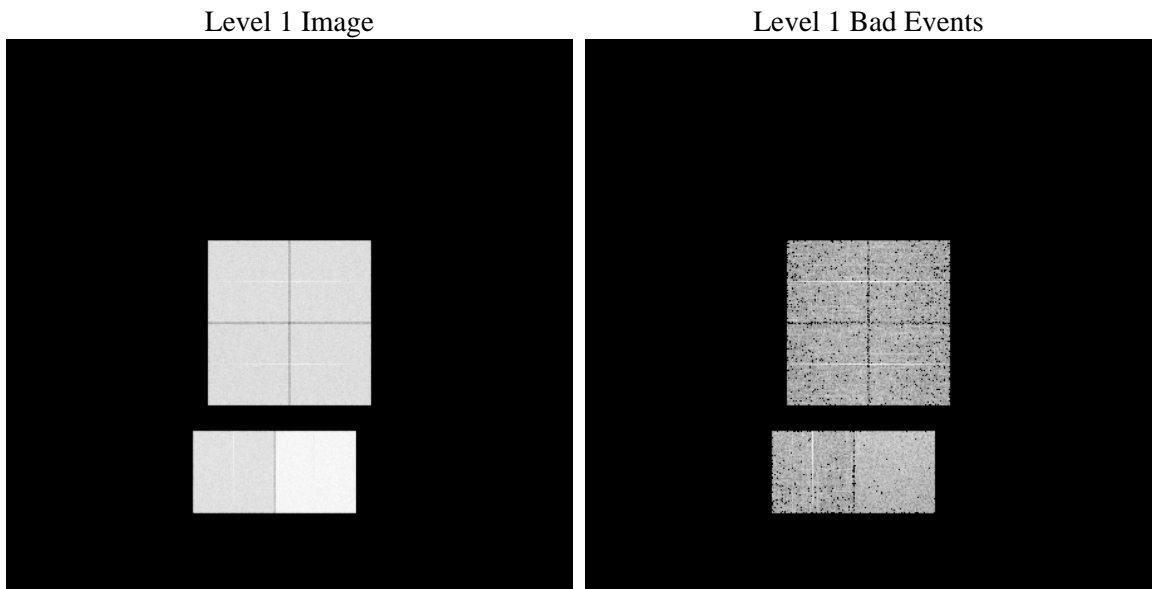
1 Front

seq_num	 	Sequence number
obs_id	62043	Observation id
title	ACIS-012367 diagnostics	Proposal title
observer	CHANDRA engineering request/realtime commanding	Principal investig
object	 	Source name
dtcycle	0	
cycle	P	events from which exps? Prim/Second/Both
ra_targ	0.0	Observer's specified target RA [deg]
dec_targ	0.0	Observer's specified target Dec [deg]
ra_nom	19.44068515874	Nominal RA [deg]
dec_nom	-61.39514411359	Nominal Dec [deg]
roll_nom	138.09355378745	Nominal Roll [deg]
revision	5	Processing version of data
ontime	5326.1887997538	Sum of GTIs [s]
livetime	5258.7453901254	Livetime [s]
ontime0	2284.9313193411	Sum of GTIs [s]
ontime1	2301.1367287487	Sum of GTIs [s]
ontime2	2136.9168374836	Sum of GTIs [s]
ontime3	2207.1465390623	Sum of GTIs [s]
ontime6	2428.5690078437	Sum of GTIs [s]
ontime7	5326.1887997538	Sum of GTIs [s]
l2events	1346851	Number of level 2 events

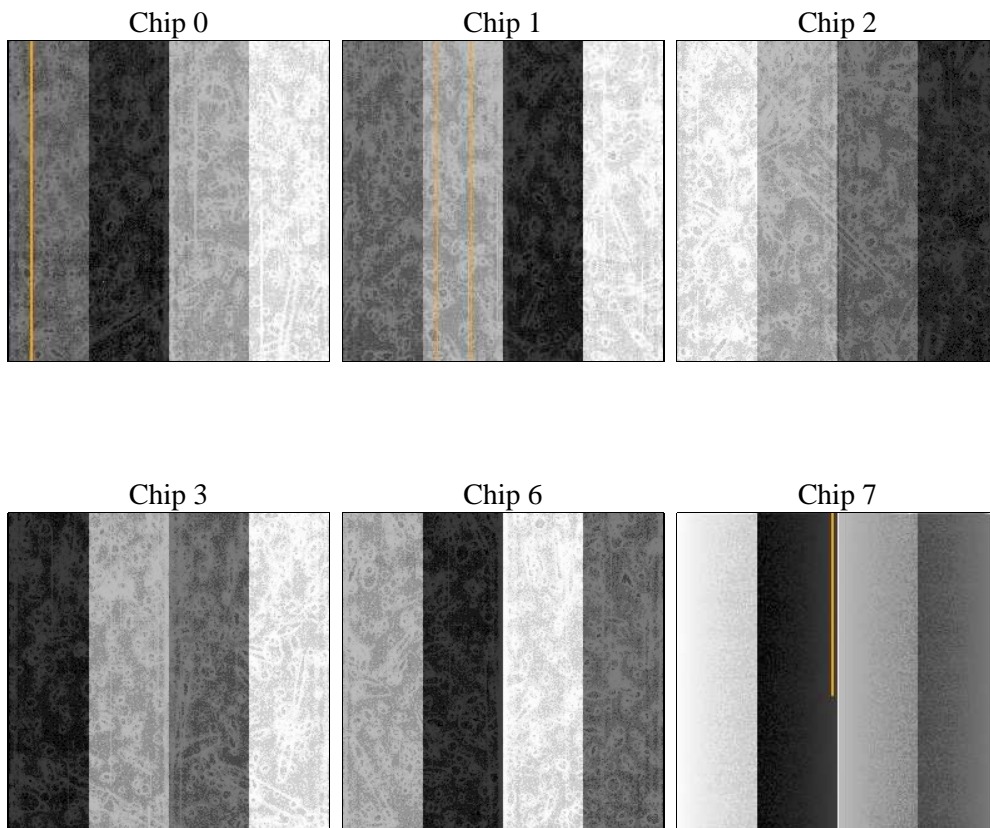
2 OBI

2.1 OBI

2.1.1 Images



2.1.2 Bias



2.1.3 Parameters

obi_num	0	Obi number	sched_exp_time	0.0	[s] Scheduled observation exposure time
ascdsver	8.4.5	Processing system revision	ontime	5326.1887997538	Sum of GTIs [s]
caldsver	4.5.1.1	 	ontime0	2284.9313193411	Sum of GTIs [s]
date	2012-08-28T08:33:42	Date and time of file creation	ontime1	2301.1367287487	Sum of GTIs [s]
revision	5	Processing version of data	ontime2	2136.9168374836	Sum of GTIs [s]
			ontime3	2207.1465390623	Sum of GTIs [s]
			ontime6	2428.5690078437	Sum of GTIs [s]
			ontime7	5326.1887997538	Sum of GTIs [s]
			l1events	1528672	Number of level 1 events

2.1.4 Events

	ccd 0	ccd 1	ccd 2	ccd 3	ccd 6	ccd 7		ccd 0	ccd 1	ccd 2	ccd 3	ccd 6	ccd 7
level 1 events	207455	207661	196744	203361	232034	481417	grade 0 events	103787	104762	99294	102990	115742	116516
rejected events	19292	18776	19106	19806	20827	28146		50%	50%	50%	50%	49%	24%
rejected %	9%	9%	9%	9%	8%	5%	grade 1 events	566	581	570	613	649	290
								0%	0%	0%	0%	0%	0%
							grade 2 events	33059	32923	31328	31746	36447	100445
								15%	15%	15%	15%	15%	20%
							grade 3 events	11795	11903	11106	11606	13003	46840
								5%	5%	5%	5%	5%	9%
							grade 4 events	11931	12010	11272	11591	13152	46457
								5%	5%	5%	5%	5%	9%
							grade 5 events	1454	1478	1420	1464	1657	6241
								0%	0%	0%	0%	0%	1%
							grade 6 events	27591	27287	24916	25622	33109	143280
								13%	13%	12%	12%	14%	29%
							grade 7 events	17272	16717	16838	17729	18275	21348
								8%	8%	8%	8%	7%	4%

2.2 Compared Parameters

Parameter	Planned	Actual
Instrument	ACIS	ACIS
Detector	ACIS-012367	ACIS-012367
Grating	NONE	NONE
Data mode	FAINT	FAINT
Observation mode	SECONDARY	SECONDARY
[deg] Pointing RA	0	19.44068515874048
[deg] Pointing Dec	0	-61.39514411359041
[deg] Pointing Roll	0.0	138.093553787446
[mm] SIM focus pos	-0.782348	-0.7809083437167272
[mm] SIM defocus	0	0.7524282956875696
[mm] SIM translation stage pos	-233.592463	250.466033080201
[mm] SIM translation stage offset	0	-0.01005468664627074
[s] Observation start time (MET)	75880596.00076699	75880595.232324
Observation start date	2000-05-28T05:56:36	2000-05-28T05:56:35
[s] Observation end time (MET)	75891126.851154	75891126.08271199
Observation end date	2000-05-28T08:52:07	2000-05-28T08:52:06
Read mode	TIMED	TIMED

Parameter	Planned	Actual
Obspar format version number	7	7
Obspar file type	PREDICTED	ACTUAL
Obspar update status	NONE	UPDATED
On-chip summing requested	N	N
Subarray requested	NONE	NONE
Alternating exposures requested	N	N
[s] Primary exposure time	3.2	3.2

2.3 Star Slots

2.4 FID Slots

A Summary

A.1 Status

V&V Scientist	Jen Lauer
V&V Date (YYYY-MM-DD)	2012.08.31
V&V Edition	1
V&V Disposition and Status	OK
V&V Charge Time	5.3261887997538

A.2 Comments