

V&V Reference Report

L2 ASCDS Version : 8.4.5

Observation 62033 - L2 Version 5
Chandra X-Ray Center

L2 Processing Date : Aug 28 2012

Contents

1	Front	2
2	OBI	3
2.1	OBI	3
2.1.1	Images	3
2.1.2	Bias	3
2.1.3	Parameters	4
2.1.4	Events	4
2.2	Compared Parameters	5
2.3	Star Slots	6
2.4	FID Slots	6
A	Summary	7
A.1	Status	7
A.2	Comments	7

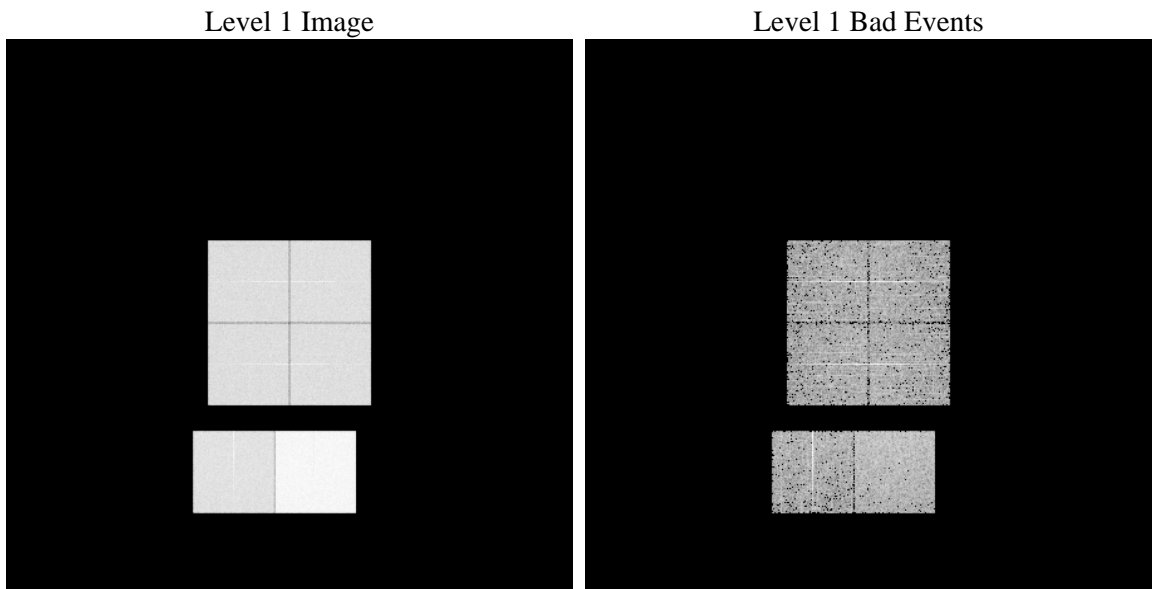
1 Front

seq_num	 	Sequence number
obs_id	62033	Observation id
title	ACIS-012367 diagnostics	Proposal title
observer	CHANDRA engineering request/realtime commanding	Principal investig
object	 	Source name
dtcycle	0	
cycle	P	events from which exps? Prim/Second/Both
ra_targ	0.0	Observer's specified target RA [deg]
dec_targ	0.0	Observer's specified target Dec [deg]
ra_nom	37.538353139072	Nominal RA [deg]
dec_nom	-66.339759267147	Nominal Dec [deg]
roll_nom	147.16836763747	Nominal Roll [deg]
revision	5	Processing version of data
ontime	5356.7642602921	Sum of GTIs [s]
livetime	5288.933685772	Livetime [s]
ontime0	2233.0747194439	Sum of GTIs [s]
ontime1	2304.3779183924	Sum of GTIs [s]
ontime2	2171.495208919	Sum of GTIs [s]
ontime3	2226.5929486006	Sum of GTIs [s]
ontime6	2446.9832691401	Sum of GTIs [s]
ontime7	5356.7642602921	Sum of GTIs [s]
l2events	1343824	Number of level 2 events

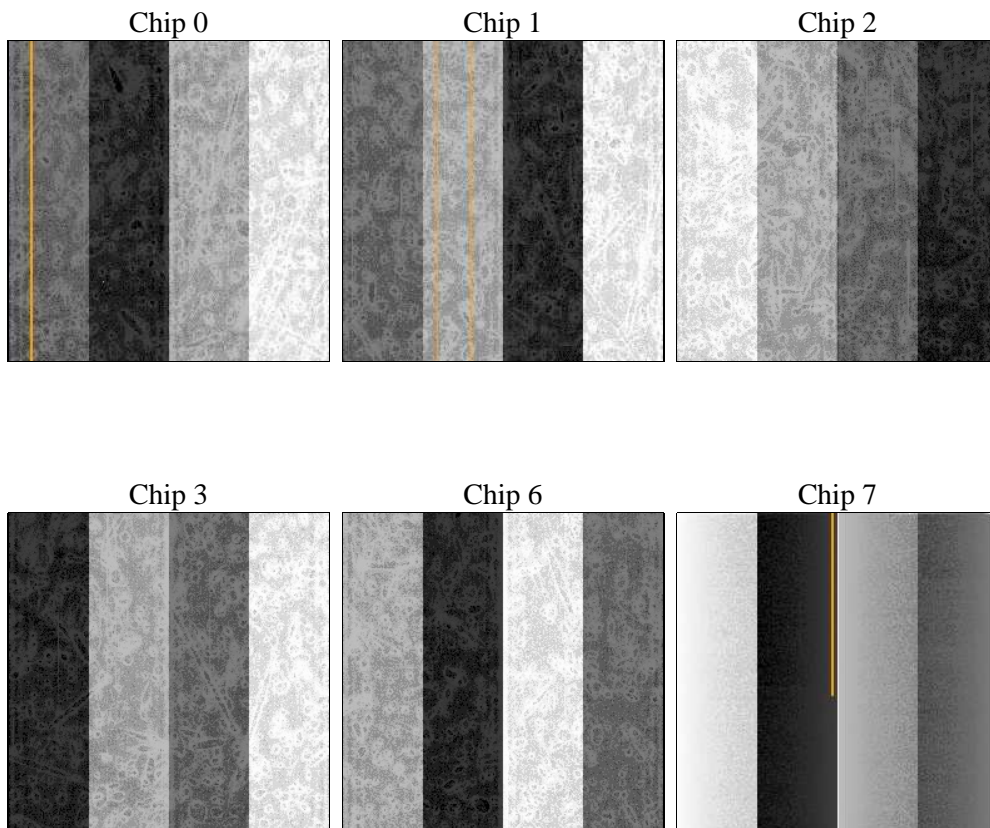
2 OBI

2.1 OBI

2.1.1 Images



2.1.2 Bias



2.1.3 Parameters

obi_num	0	Obi number	sched_exp_time	0.0	[s] Scheduled observation exposure time
ascdsver	8.4.5	Processing system revision	ontime	5356.7642602921	Sum of GTIs [s]
caldbver	4.5.1.1	 	ontime0	2233.0747194439	Sum of GTIs [s]
date	2012-08-28T22:29:12	Date and time of file creation	ontime1	2304.3779183924	Sum of GTIs [s]
revision	5	Processing version of data	ontime2	2171.495208919	Sum of GTIs [s]
			ontime3	2226.5929486006	Sum of GTIs [s]
			ontime6	2446.9832691401	Sum of GTIs [s]
			ontime7	5356.7642602921	Sum of GTIs [s]
			l1events	1525194	Number of level 1 events

2.1.4 Events

	ccd 0	ccd 1	ccd 2	ccd 3	ccd 6	ccd 7		ccd 0	ccd 1	ccd 2	ccd 3	ccd 6	ccd 7
level 1 events	200880	207592	200028	204731	231320	480643	grade 0 events	100194	104291	100610	103127	115120	116392
rejected events	19041	19035	19253	19975	20668	27559		49%	50%	50%	50%	49%	24%
rejected %	9%	9%	9%	9%	8%	5%	grade 1 events	587	581	551	578	637	310
								0%	0%	0%	0%	0%	0%
							grade 2 events	32054	33215	31843	32175	36560	100870
								15%	16%	15%	15%	15%	20%
							grade 3 events	11477	12029	11322	11709	13044	46789
								5%	5%	5%	5%	5%	9%
							grade 4 events	11656	11990	11459	11856	12922	46321
								5%	5%	5%	5%	5%	9%
							grade 5 events	1468	1449	1352	1429	1624	6300
								0%	0%	0%	0%	0%	1%
							grade 6 events	26458	27032	25541	25889	33006	142712
								13%	13%	12%	12%	14%	29%
							grade 7 events	16986	17005	17350	17968	18407	20949
								8%	8%	8%	8%	7%	4%

2.2 Compared Parameters

Parameter	Planned	Actual	Parameter	Planned	Actual
Instrument	ACIS	ACIS	Obspar format version number	7	7
Detector	ACIS-012367	ACIS-012367	Obspar file type	PREDICTED	ACTUAL
Grating	NONE	NONE	Obspar update status	NONE	UPDATED
Data mode	FAINT	FAINT	On-chip summing requested	N	N
Observation mode	SECONDARY	SECONDARY	Subarray requested	NONE	NONE
[deg] Pointing RA	0	37.53835313907242	Alternating exposures requested	N	N
[deg] Pointing Dec	0	-66.3397592671468	[s] Primary exposure time	3.2	3.2
[deg] Pointing Roll	0.0	147.1683676374711			
[mm] SIM focus pos	-0.782348	-0.7809083437167272			
[mm] SIM defocus	0	0.7524282956875696			
[mm] SIM translation stage pos	-233.592463	250.466033080201			
[mm] SIM translation stage offset	0	-0.01005468664627074			
[s] Observation start time (MET)	76565468.226006	76565467.457534			
Observation start date	2000-06-05T04:11:08	2000-06-05T04:11:07			
[s] Observation end time (MET)	76575999.07639401	76575998.30792201			
Observation end date	2000-06-05T07:06:39	2000-06-05T07:06:38			
Read mode	TIMED	TIMED			

2.3 Star Slots

2.4 FID Slots

A Summary

A.1 Status

V&V Scientist	Jen Lauer
V&V Date (YYYY-MM-DD)	2012.08.31
V&V Edition	1
V&V Disposition and Status	OK
V&V Charge Time	5.3567642602921

A.2 Comments