

# V&V Reference Report

## L2 ASCDS Version : 7.6.7

Observation 6203 - L2 Version 002  
Chandra X-Ray Center

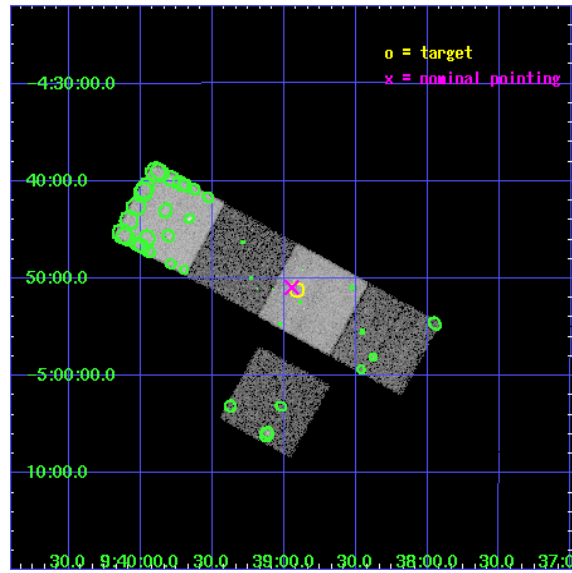
L2 Processing Date: Feb 19 2006

## Contents

<b>1</b>	<b>Front</b>	<b>2</b>
<b>2</b>	<b>OBI</b>	<b>3</b>
2.1	OBI . . . . .	3
2.1.1	Images . . . . .	3
2.1.2	Bias . . . . .	3
2.1.3	Parameters . . . . .	4
2.1.4	Events . . . . .	4
2.2	Compared Parameters . . . . .	5
2.3	Aspect . . . . .	6
2.4	Star Slots . . . . .	9
2.4.1	Slot 3 . . . . .	9
2.4.2	Slot 4 . . . . .	10
2.4.3	Slot 5 . . . . .	11
2.4.4	Slot 6 . . . . .	12
2.4.5	Slot 7 . . . . .	13
2.5	FID Slots . . . . .	14
2.5.1	Slot 0 . . . . .	14
2.5.2	Slot 1 . . . . .	15
2.5.3	Slot 2 . . . . .	16
<b>3</b>	<b>Point Sources</b>	<b>17</b>
<b>A</b>	<b>Summary</b>	<b>18</b>
A.1	Status . . . . .	18
A.2	Comments . . . . .	18

# 1 Front

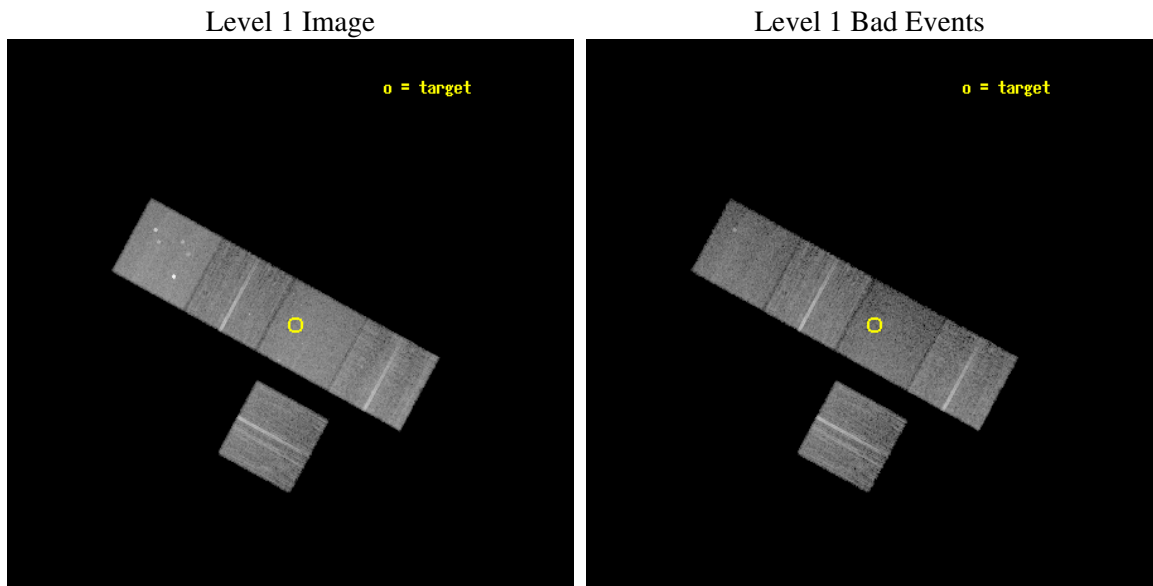
seq_num	800501
obs_id	6203
title	HI-Deficient Ultracompact Groups
observer	Prof Trevor Ponman
object	HCG 40
dtcycle	0
cycle	P
ra_targ	144.727083
dec_targ	-4.851944
ra_nom	144.73626026542
dec_nom	-4.8488622010334
roll_nom	28.657403597947
revision	2
ontime	15239.599970698
livetime	15040.483377851
ontime3	15239.599970698
ontime5	15239.599970698
ontime6	15233.317970246
ontime7	15239.599970698
ontime8	15239.599970698
l2events	125835



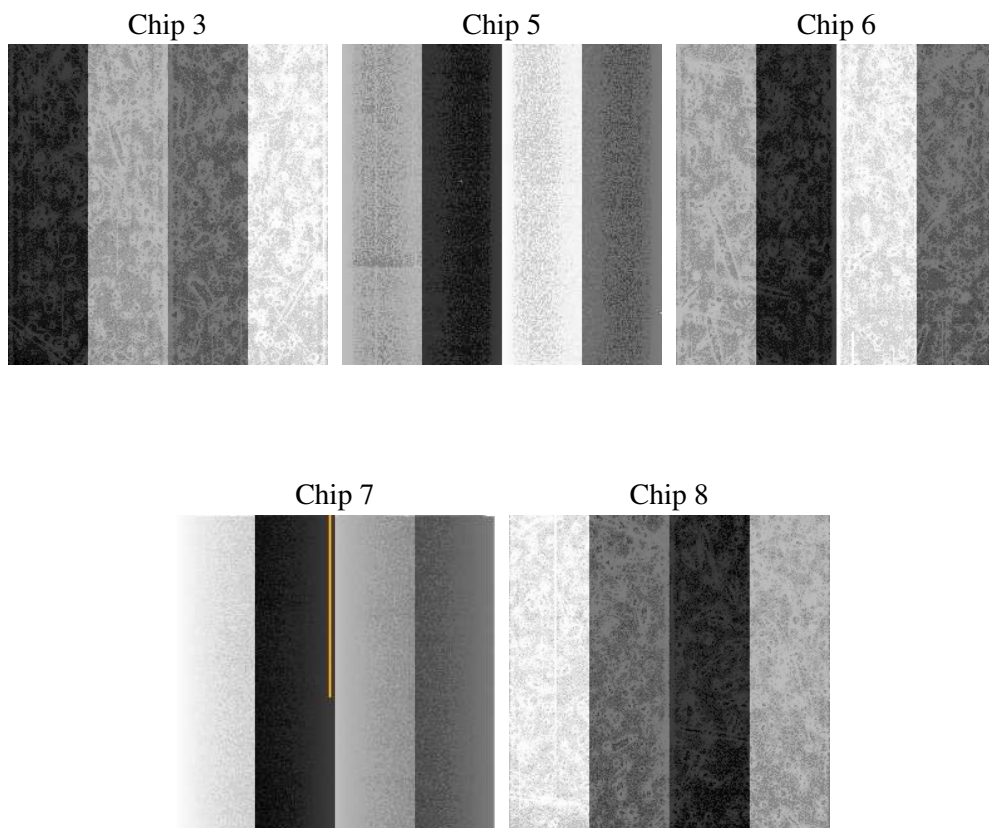
## 2 OBI

### 2.1 OBI

#### 2.1.1 Images



#### 2.1.2 Bias



### 2.1.3 Parameters

obi_num	1
ascdsver	7.6.7
caldbver	3.2.1
date	2006-02-19T19:49:09
revision	2

sched_exp_time	15060.000000
ontime	16295.568577141
ontime3	16295.568577141
ontime5	16295.568577141
ontime6	16289.286576688
ontime7	16295.568577141
ontime8	16295.568577141
l1events	572194

### 2.1.4 Events

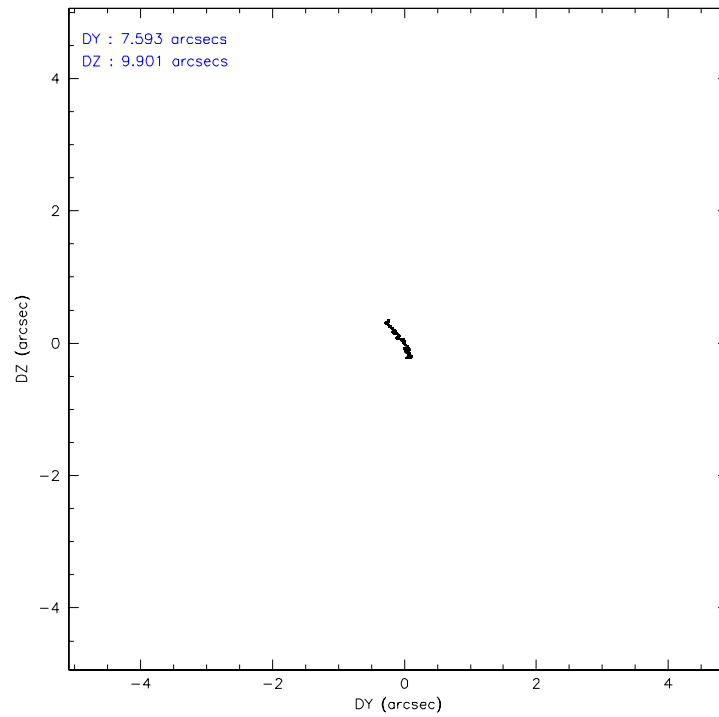
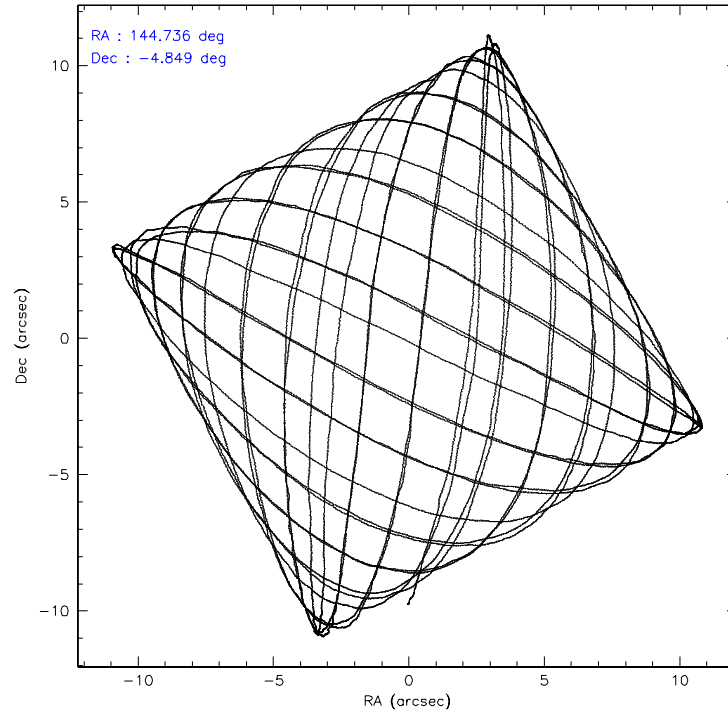
	ccd 3	ccd 5	ccd 6	ccd 7	ccd 8
level 1 events	99504	138769	101028	111020	121873
rejected events	90546	75567	90973	67086	94897
rejected %	90%	54%	90%	60%	77%

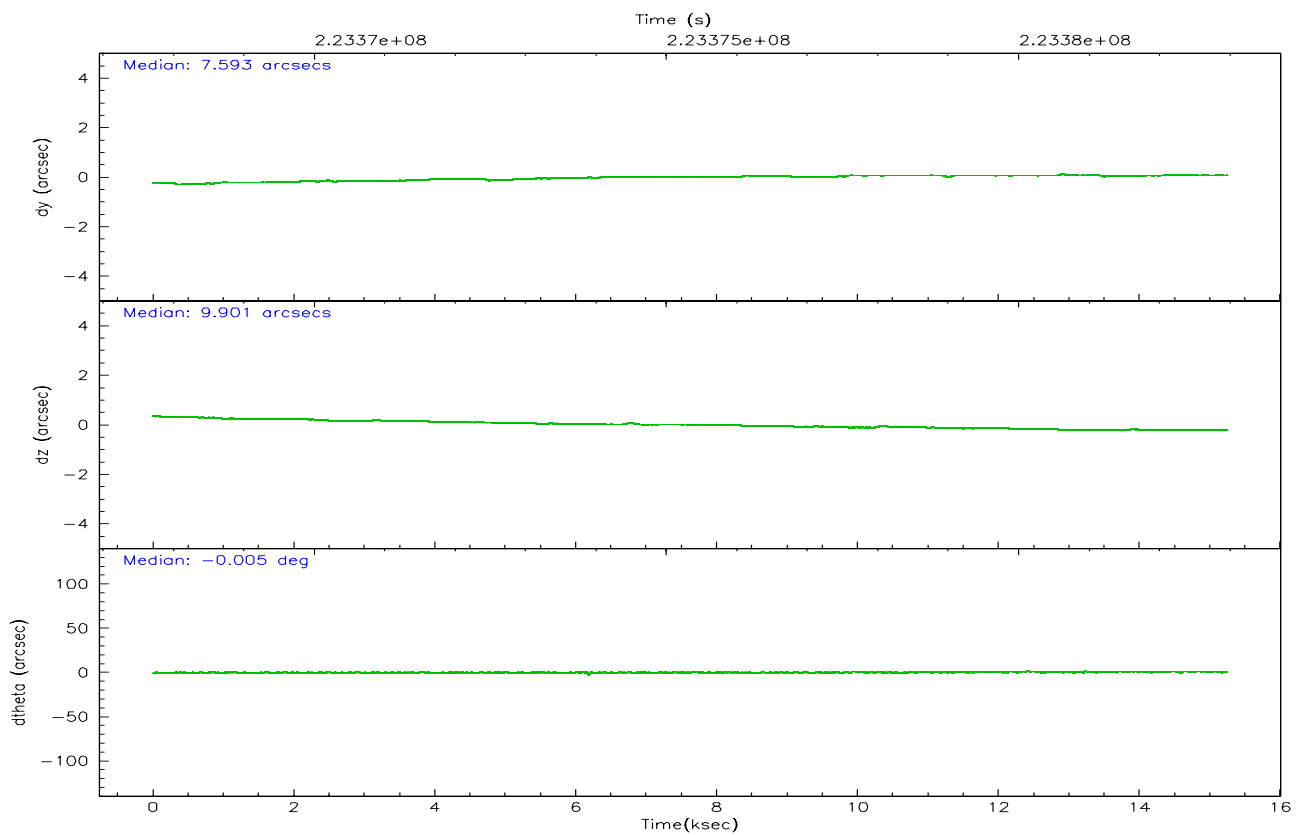
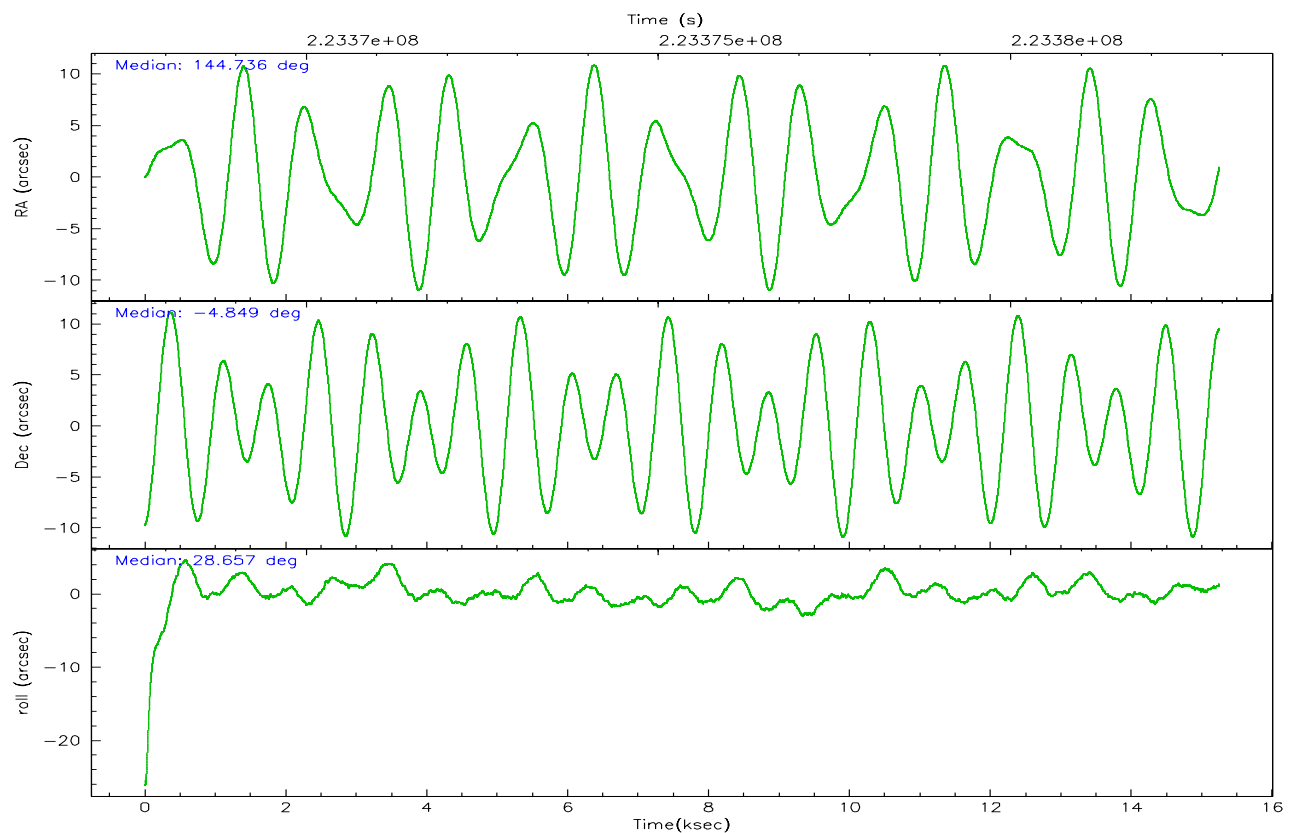
	ccd 3	ccd 5	ccd 6	ccd 7	ccd 8
grade 0 events	3434	7718	3819	2910	8819
	3%	5%	3%	2%	7%
grade 1 events	41	64	42	74	85
	0%	0%	0%	0%	0%
grade 2 events	2014	20793	2234	11708	6550
	2%	14%	2%	10%	5%
grade 3 events	1124	1629	1136	2711	3082
	1%	1%	1%	2%	2%
grade 4 events	1086	1608	1209	2661	2897
	1%	1%	1%	2%	2%
grade 5 events	3906	7204	3995	8459	5524
	3%	5%	3%	7%	4%
grade 6 events	1930	35967	2344	26987	7591
	1%	25%	2%	24%	6%
grade 7 events	85969	63786	86249	55510	87325
	86%	45%	85%	50%	71%

## 2.2 Compared Parameters

Parameter	Planned	Actual	Parameter	Planned	Actual
Instrument	ACIS	ACIS	Obspar format version number	6	6
Detector	ACIS-35678	ACIS-35678	Obspar file type	PREDICTED	ACTUAL
Grating	NONE	NONE	Obspar update status	NONE	UPDATED
Data mode	VFAINT	VFAINT	On-chip summing requested	N	N
Observation mode	POINTING	POINTING	Subarray requested	NONE	NONE
Pointing RA	144.722389	144.7362602654182	Alternating exposures requested	N	N
Pointing Dec	-4.872313	-4.848862201033405	Primary exposure time	0.000000	3.1
Pointing Roll	28.499594	28.65740359794652			
SIM focus pos (mm)	-0.684267	-0.6828225247311905			
SIM defocus (mm)	0	0.001444936568705701			
SIM translation stage pos (mm)	-190.132523	-190.1400660498719			
SIM translation stage offset (mm)	0	0.00754346686406393			
Observation start time	223367901.184000	223366368.14713			
Observation start date	2005-01-29T06:37:17	2005-01-29T06:12:48			
Observation end time	223382961.184000	223383769.57292			
Observation end date	2005-01-29T10:48:17	2005-01-29T11:02:49			
Read mode	TIMED	TIMED			

## 2.3 Aspect





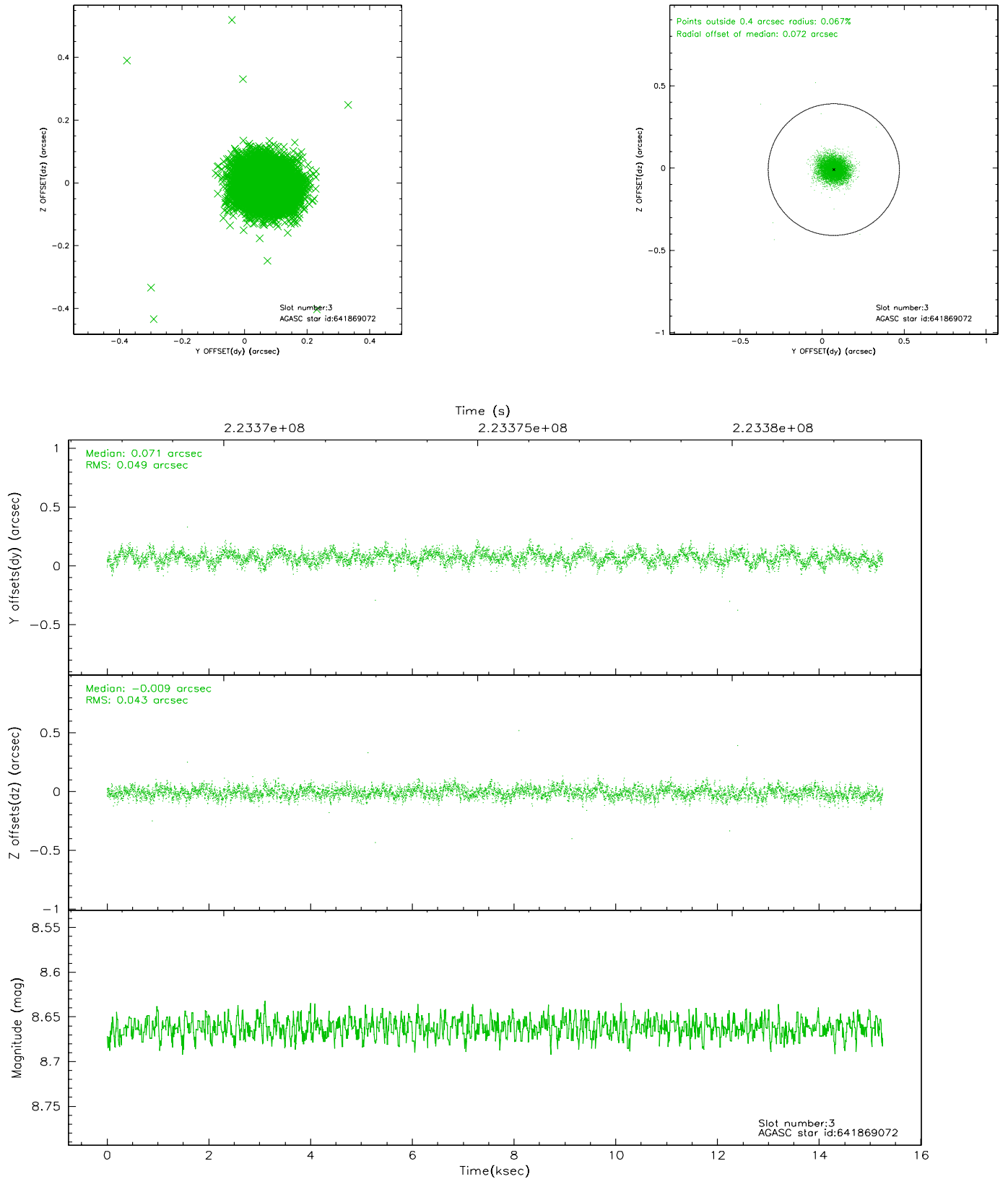
### Slot Statistics

slot	status	id	mag	n_pts	med_dy	med_dz	dr1	dr2	ra	dec	mean_y	mean_z
0	FID	ACIS-S-2	7.10	3719	-0.032	-0.004	0.010	0.015	0.000000	0.000000	-760.31	-1731.17
1	FID	ACIS-S-4	7.21	3718	0.059	0.017	0.012	0.021	0.000000	0.000000	2152.87	177.09
2	FID	ACIS-S-5	7.23	3717	-0.056	-0.003	0.010	0.016	0.000000	0.000000	-1812.85	170.99
3	GUIDE	641869072	8.66	7436	0.071	-0.009	0.068	0.110	144.906831	-4.212729	1715.06	1770.71
4	GUIDE	641870256	9.02	7429	-0.058	0.052	0.085	0.137	144.908269	-4.267747	1625.22	1594.50
5	GUIDE	641871288	7.99	7434	-0.000	-0.083	0.062	0.098	144.780319	-4.378727	1030.79	1462.29
6	GUIDE	642002944	9.31	7433	-0.047	0.013	0.095	0.154	145.178833	-4.409438	2234.90	682.37
7	GUIDE	642261760	7.62	7437	0.031	0.028	0.063	0.102	144.550271	-5.166538	-1047.31	-636.42

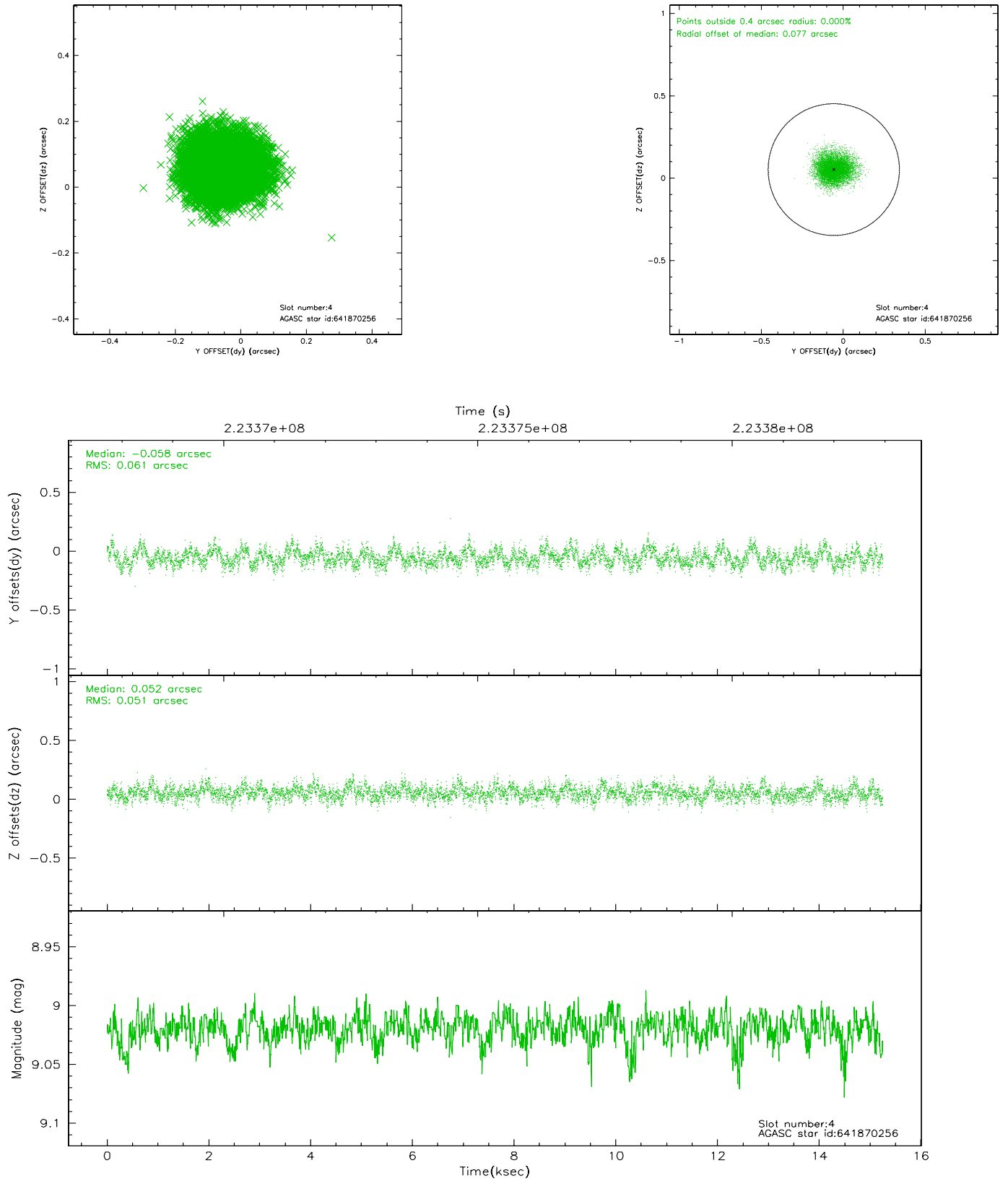


## 2.4 Star Slots

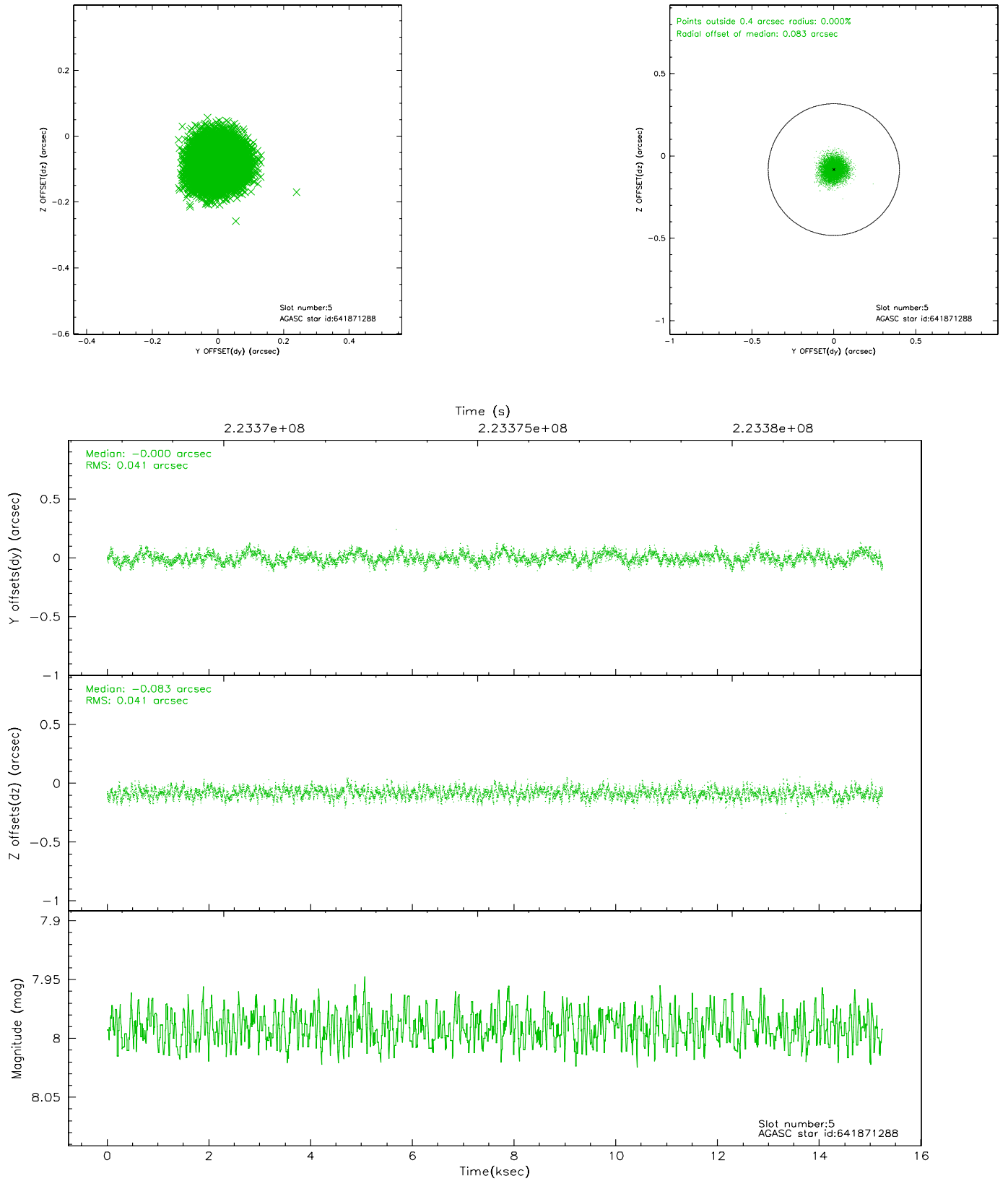
### 2.4.1 Slot 3



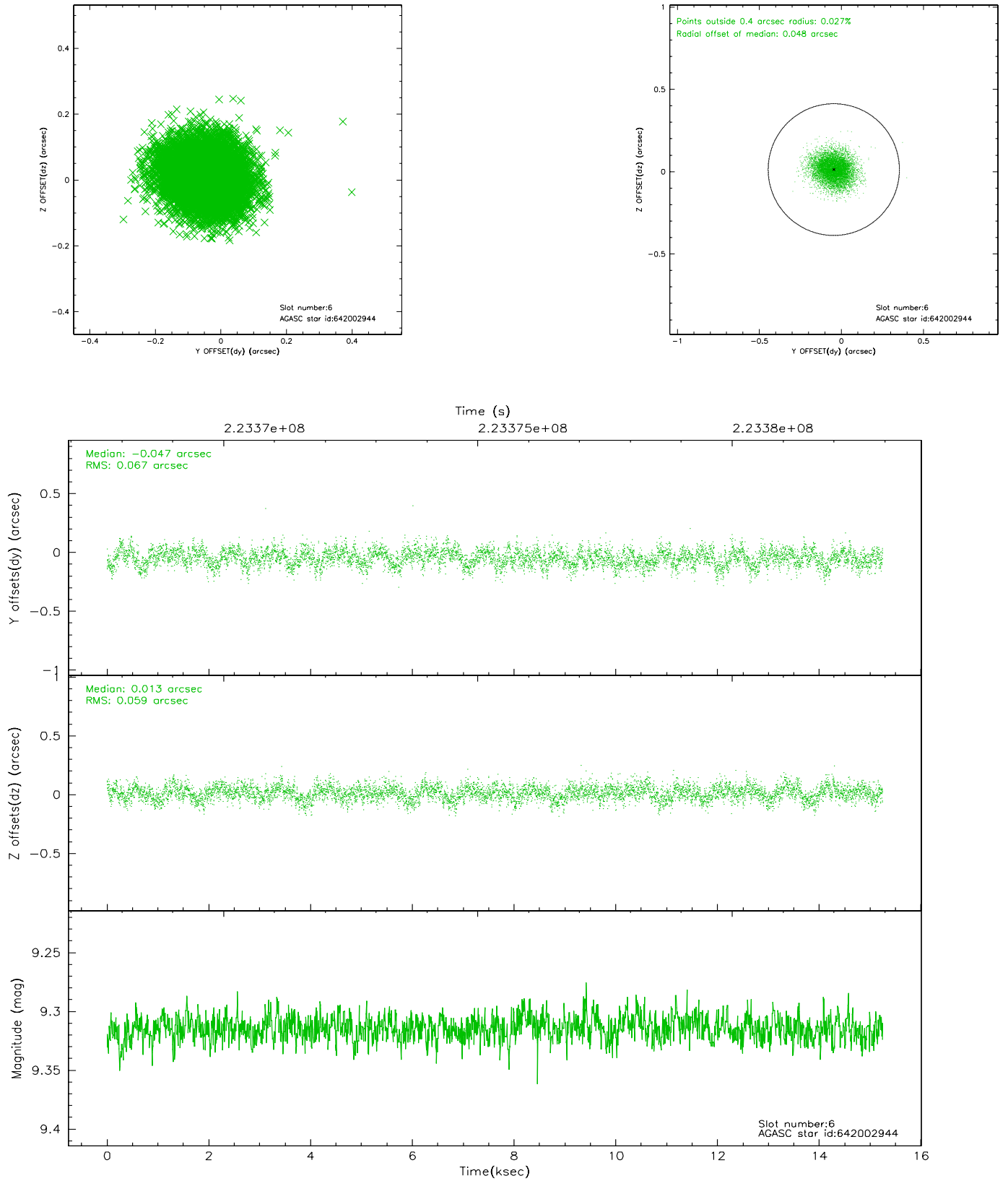
## 2.4.2 Slot 4



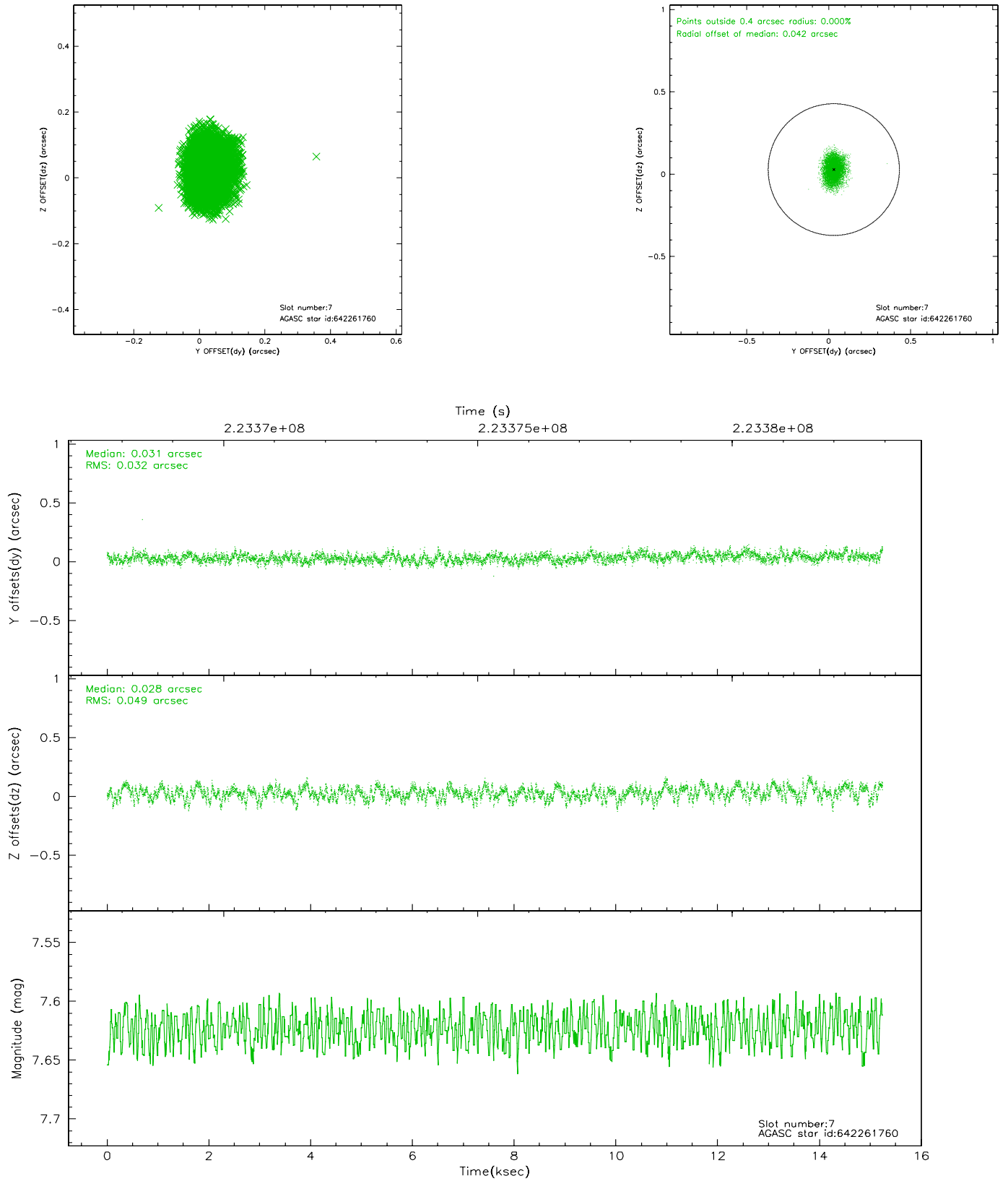
### 2.4.3 Slot 5



## 2.4.4 Slot 6

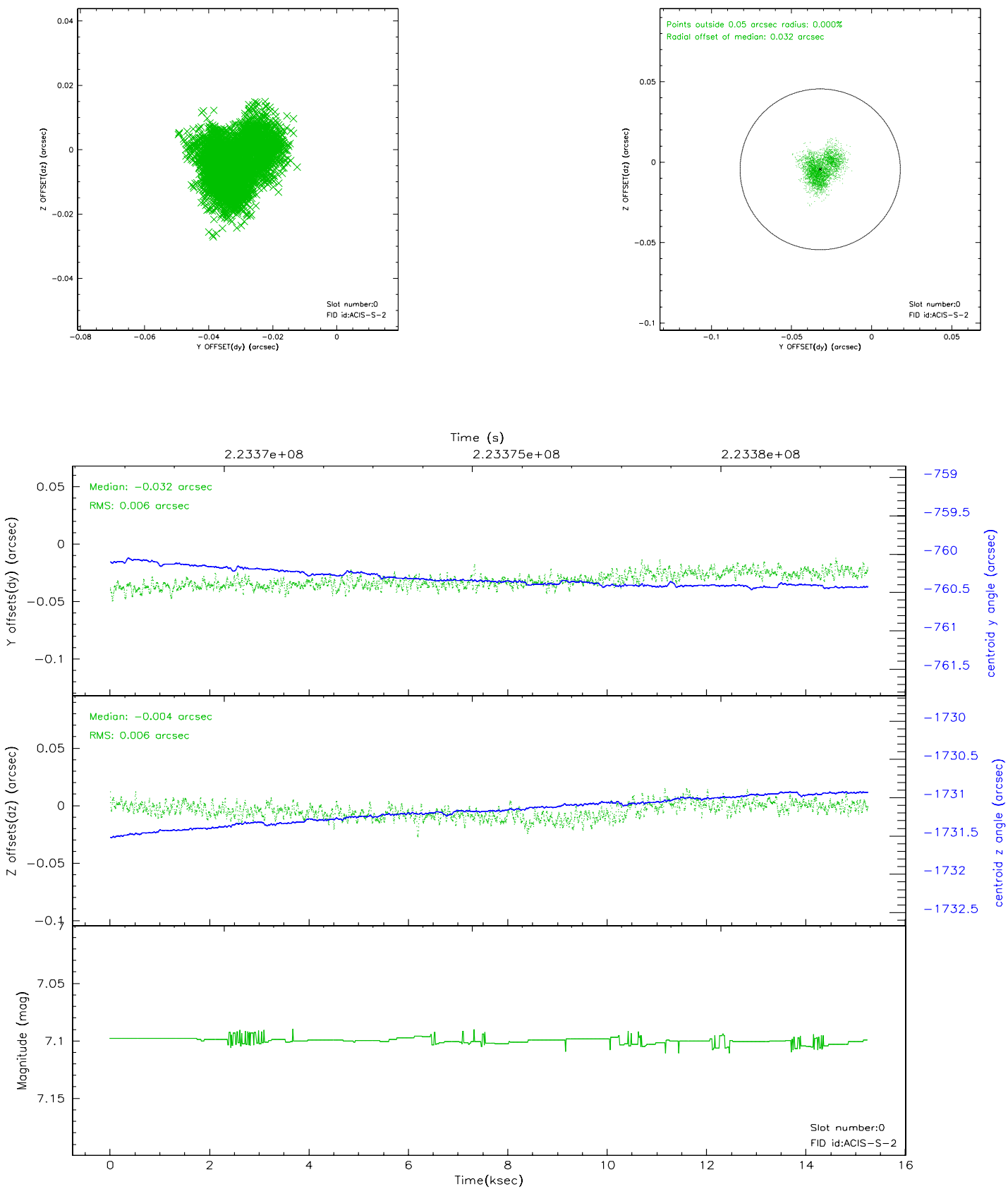


## 2.4.5 Slot 7

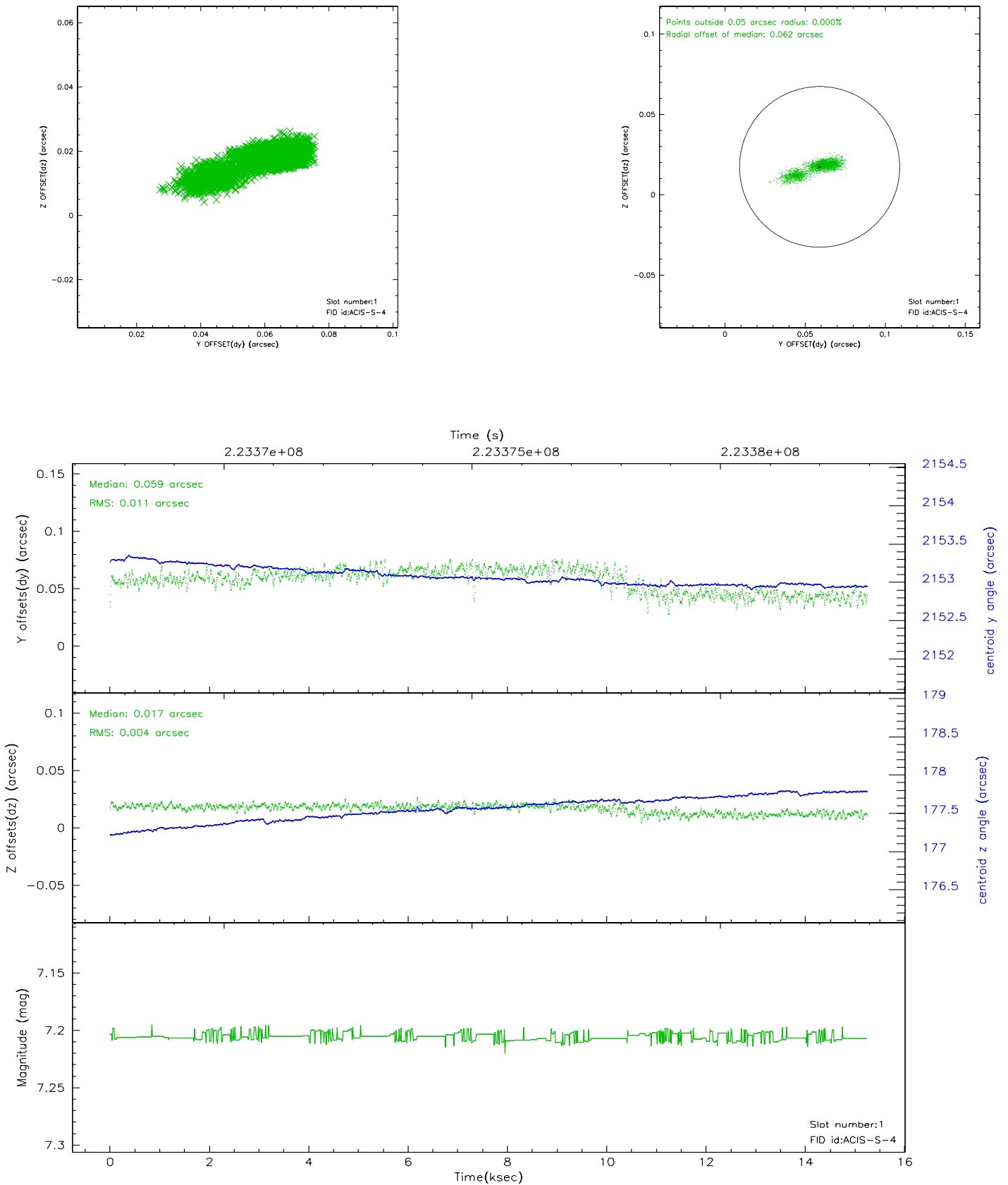


## 2.5 FID Slots

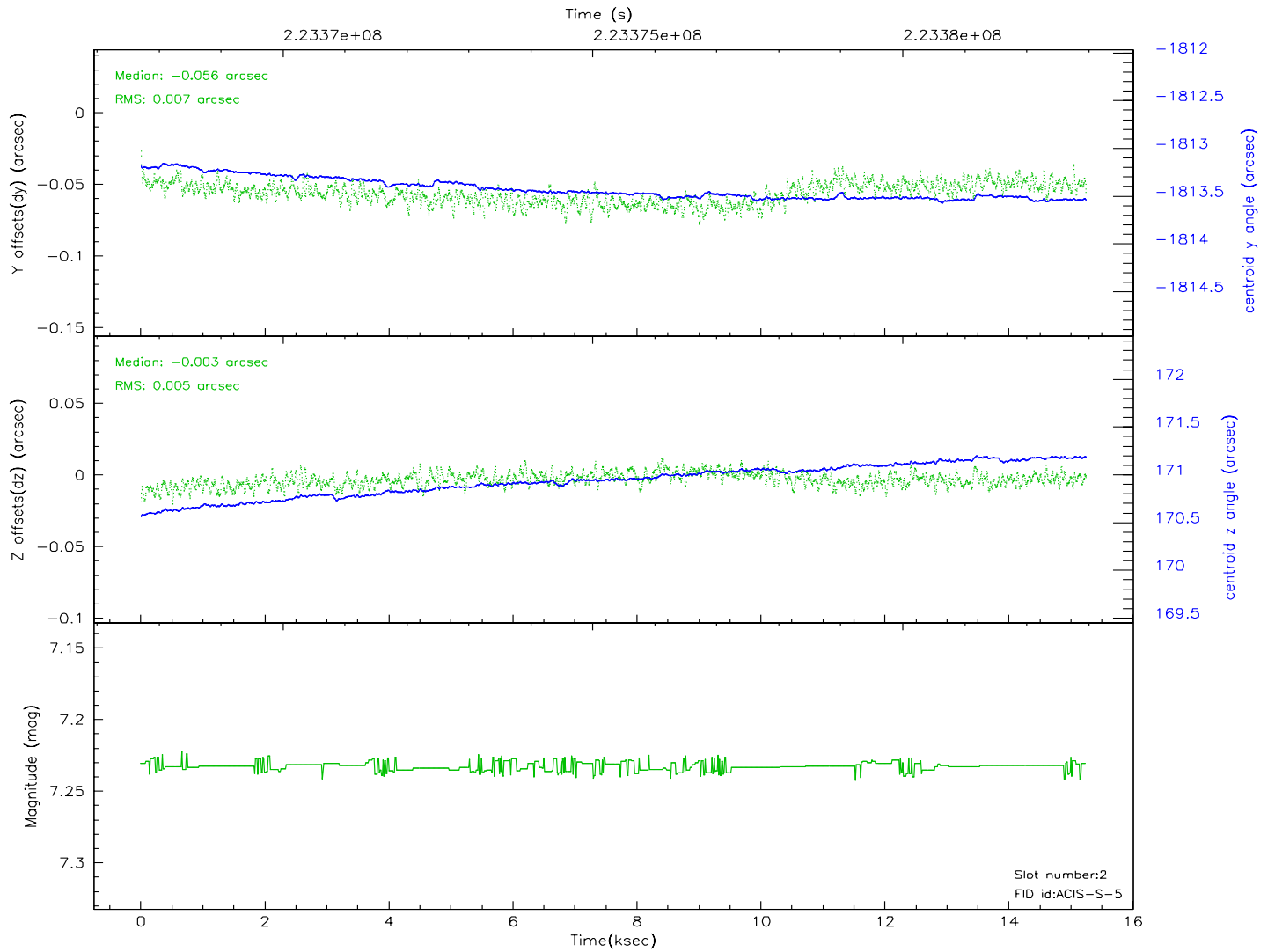
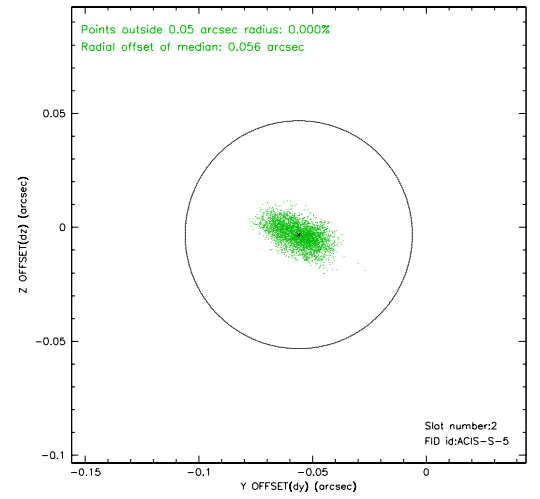
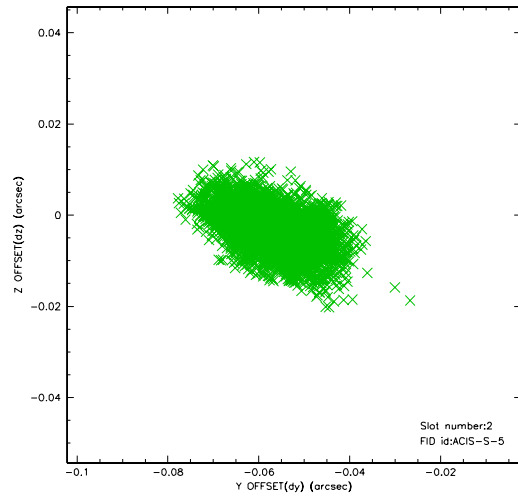
### 2.5.1 Slot 0



## 2.5.2 Slot 1

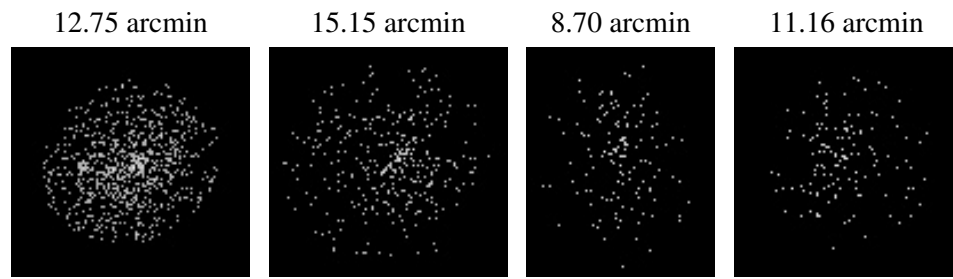


### 2.5.3 Slot 2





### 3 Point Sources



## A Summary

### A.1 Status

V&V Scientist	Jen Lauer
V&V Date (YYYY-MM-DD)	2006.02.21
V&V Edition	1
V&V Disposition and Status	OK
V&V Charge Time	15.23959

### A.2 Comments