

V&V Reference Report

L2 ASCDS Version : 7.6.10

Observation 61953 - L2 Version 001
Chandra X-Ray Center

L2 Processing Date : Jun 5 2007

Contents

1	Front	2
2	OBI	3
2.1	OBI	3
2.1.1	Images	3
2.1.2	Bias	3
2.1.3	Parameters	4
2.1.4	Events	4
2.2	Compared Parameters	5
2.3	Star Slots	6
2.4	FID Slots	6
A	Summary	7
A.1	Status	7
A.2	Comments	7

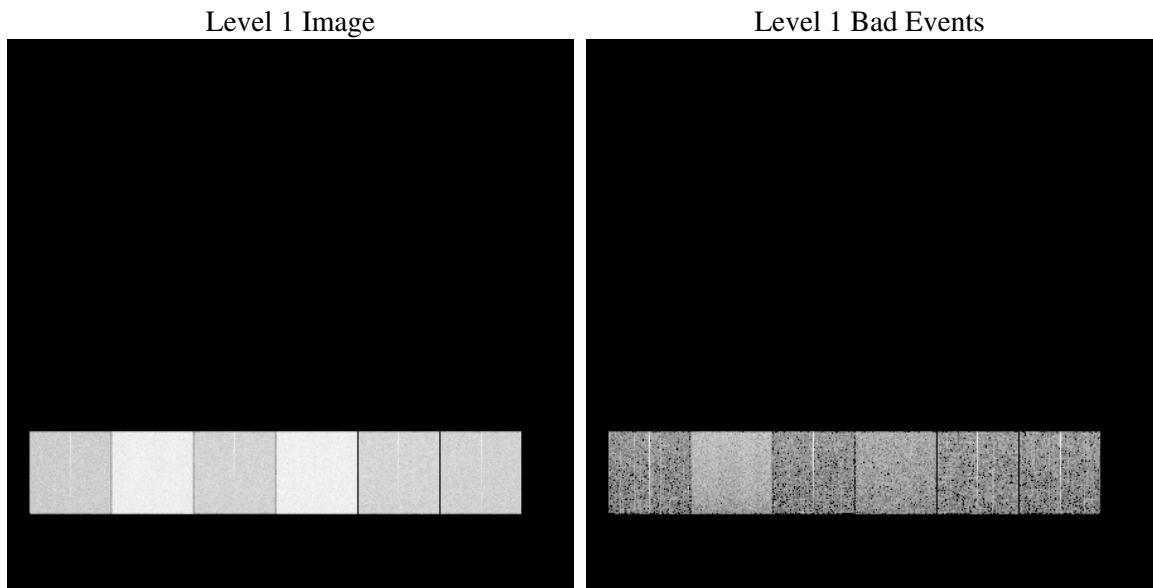
1 Front

seq_num	
obs_id	61953
title	ACIS-456789 diagnostics
observer	CHANDRA engineering request/realtime commanding
object	
dtcycle	0
cycle	P
ra_targ	0.0
dec_targ	0.0
ra_nom	176.82861210107
dec_nom	-44.384281748639
roll_nom	205.40463344535
revision	3
ontime	4841.4827525318
livetime	4780.1769827283
ontime4	1989.5135145485
ontime5	5243.4050448239
ontime6	2203.3809743971
ontime7	4841.4827525318
ontime8	2242.355474472
ontime9	2164.3653146774
l2events	1359558

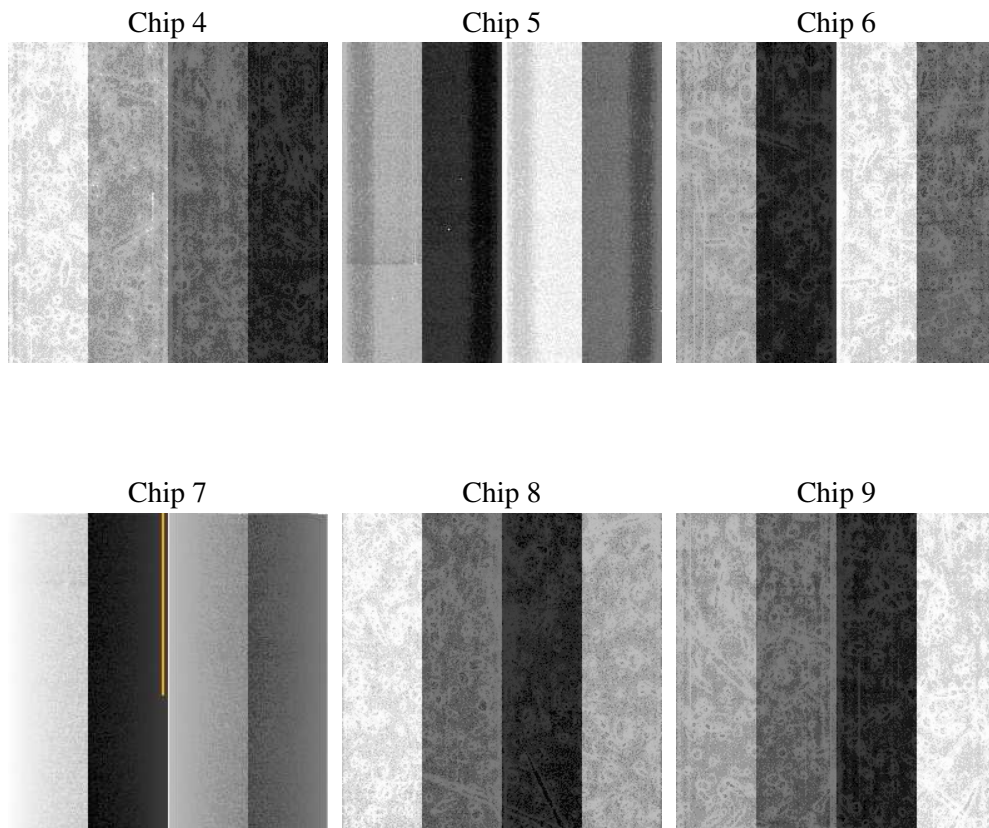
2 OBI

2.1 OBI

2.1.1 Images



2.1.2 Bias



2.1.3 Parameters

obi_num	0
ascdsver	7.6.10
caldbver	3.4.0
date	2007-06-05T14:07:26
revision	3

sched_exp_time	0.0
ontime	4841.4827525318
ontime4	1989.5135145485
ontime5	5243.4050448239
ontime6	2203.3809743971
ontime7	4841.4827525318
ontime8	2242.355474472
ontime9	2164.3653146774
l1events	1554875

2.1.4 Events

	ccd 4	ccd 5	ccd 6	ccd 7	ccd 8	ccd 9
level 1 events	166900	396516	195763	408817	200748	186131
rejected events	18419	40359	17715	24810	19364	18251
rejected %	11%	10%	9%	6%	9%	9%

	ccd 4	ccd 5	ccd 6	ccd 7	ccd 8	ccd 9
grade 0 events	83589	82685	97303	98291	100456	92880
	50%	20%	49%	24%	50%	49%
grade 1 events	451	267	494	247	469	486
	0%	0%	0%	0%	0%	0%
grade 2 events	26776	132208	31109	83996	31932	29479
	16%	33%	15%	20%	15%	15%
grade 3 events	9024	21812	10764	39405	11212	10211
	5%	5%	5%	9%	5%	5%
grade 4 events	8811	21843	10898	38983	11340	10139
	5%	5%	5%	9%	5%	5%
grade 5 events	1309	8151	1424	5518	1575	1445
	0%	2%	0%	1%	0%	0%
grade 6 events	20281	97609	27974	123332	26444	25171
	12%	24%	14%	30%	13%	13%
grade 7 events	16659	31941	15797	19045	17320	16320
	9%	8%	8%	4%	8%	8%

2.2 Compared Parameters

Parameter	Planned	Actual	Parameter	Planned	Actual
Instrument	ACIS	ACIS	Obspar format version number	6	6
Detector	ACIS-456789	ACIS-456789	Obspar file type	PREDICTED	ACTUAL
Grating	NONE	NONE	Obspar update status	NONE	UPDATED
Data mode	FAINT	FAINT	On-chip summing requested	N	N
Observation mode	SECONDARY	SECONDARY	Subarray requested	NONE	NONE
Pointing RA	0	176.8286121010742	Alternating exposures requested	N	N
Pointing Dec	0	-44.38428174863896	Primary exposure time	0.000000	3.2
Pointing Roll	0.0	205.4046334453502			
SIM focus pos (mm)	-0.684267	-0.6828225247311905			
SIM defocus (mm)	0	0.8505141146731063			
SIM translation stage pos (mm)	-190.132523	250.466033080201			
SIM translation stage offset (mm)	0	-0.01005468664627074			
Observation start time	83652158.589	83652157.820271			
Observation start date	2000-08-26T04:42:39	2000-08-26T04:42:37			
Observation end time	83662668.939	83662668.170665			
Observation end date	2000-08-26T07:37:49	2000-08-26T07:37:48			
Read mode	TIMED	TIMED			

2.3 Star Slots

2.4 FID Slots

A Summary

A.1 Status

V&V Scientist	Jen Lauer
V&V Date (YYYY-MM-DD)	2007.06.05
V&V Edition	1
V&V Disposition and Status	OK
V&V Charge Time	4.84148275

A.2 Comments

Focal plane temperature is warmer than -118.7 C degrees during the first 7 ksec of the observation. This temperature is the upper limit of the verified ACIS calibration for the front-illuminated chips. The focal plane temperature is warmer than -116.7 degrees C for approximately the first 2 ksec of this observation. This temperature is the upper limit of the verified ACIS calibration for the back-illuminated chips. The ACIS spectral response calibration is less accurate at these warmer temperatures than it is at -119.7 C. Users whose science objectives depend on the most accurate spectral response (ie: fitting line-rich spectra) may notice an effect. Users whose science objectives do not depend on the most accurate spectral response should not notice an effect