

V&V Reference Report

L2 ASCDS Version : 8.4.5

Observation 61723 - L2 Version 3
Chandra X-Ray Center

L2 Processing Date : Sep 12 2012

Contents

1	Front	2
2	OBI	3
2.1	OBI	3
2.1.1	Images	3
2.1.2	Bias	3
2.1.3	Parameters	4
2.1.4	Events	4
2.2	Compared Parameters	5
2.3	Star Slots	6
2.4	FID Slots	6
A	Summary	7
A.1	Status	7
A.2	Comments	7

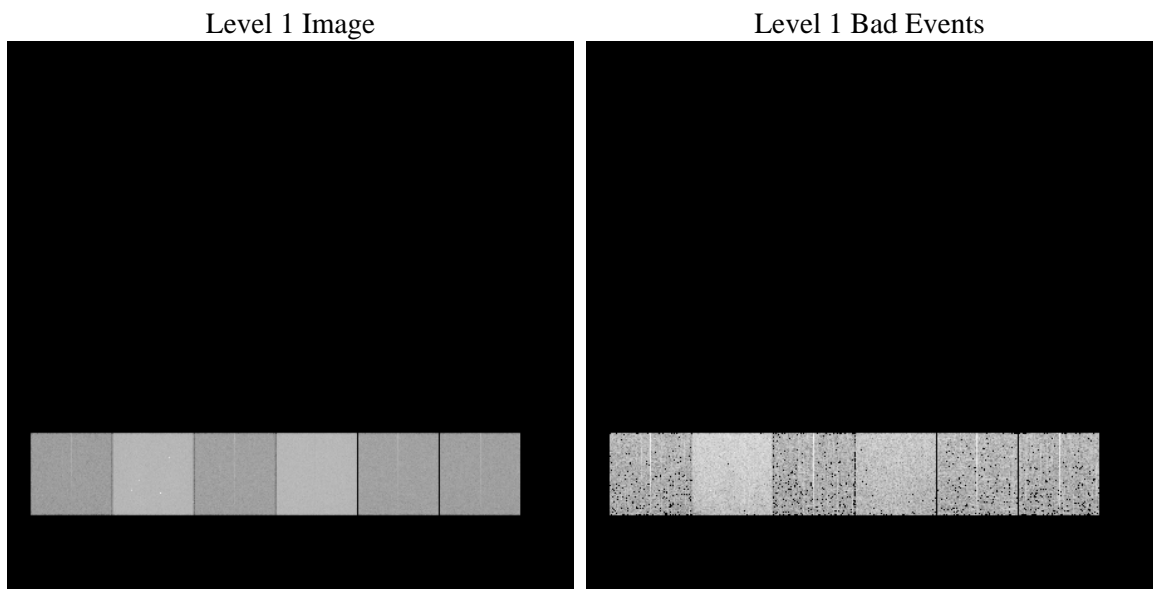
1 Front

seq_num	 	Sequence number
obs_id	61723	Observation id
title	ACIS-456789 diagnostics	Proposal title
observer	CHANDRA engineering request/realtime commanding	Principal investig
object	 	Source name
dtcycle	0	
cycle	P	events from which exps? Prim/Second/Both
ra_targ	0.0	Observer's specified target RA [deg]
dec_targ	0.0	Observer's specified target Dec [deg]
ra_nom	249.7181697022	Nominal RA [deg]
dec_nom	-3.2238321867337	Nominal Dec [deg]
roll_nom	81.706652979968	Nominal Roll [deg]
revision	3	Processing version of data
ontime	5535.6573959291	Sum of GTIs [s]
livetime	5465.5615688091	Livetime [s]
ontime4	2194.0915637016	Sum of GTIs [s]
ontime5	5947.2597658634	Sum of GTIs [s]
ontime6	2340.0287104398	Sum of GTIs [s]
ontime7	5535.6573959291	Sum of GTIs [s]
ontime8	2398.3675200492	Sum of GTIs [s]
ontime9	2327.0647099912	Sum of GTIs [s]
l2events	1337829	Number of level 2 events

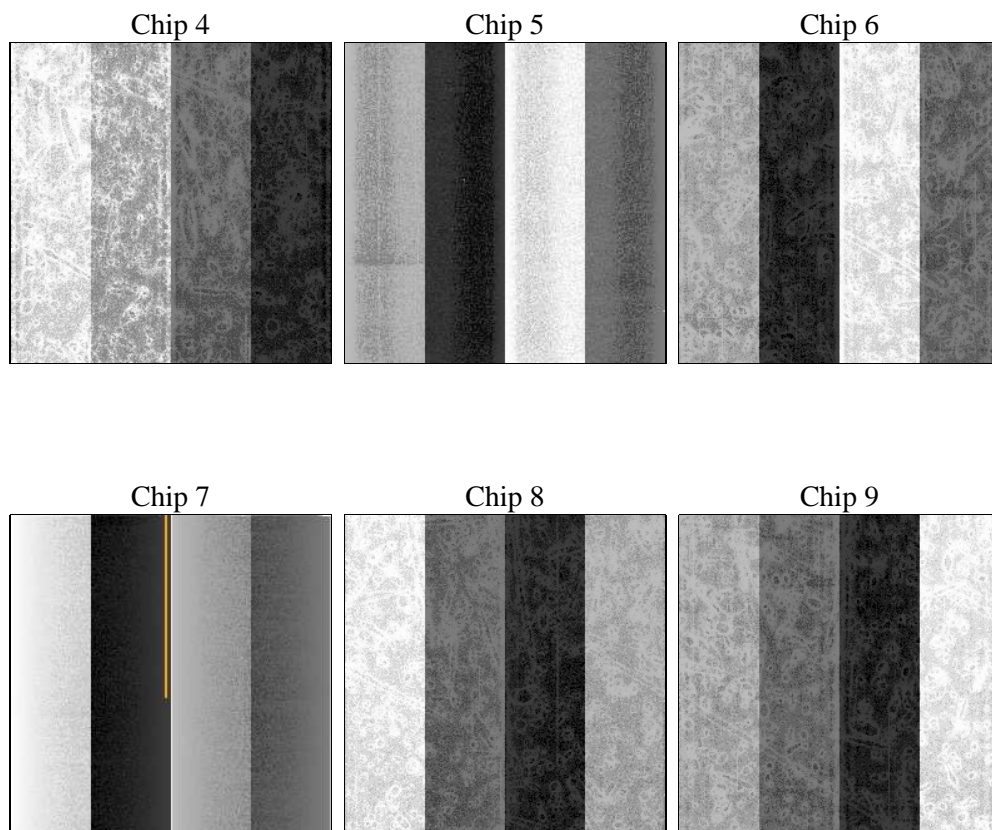
2 OBI

2.1 OBI

2.1.1 Images



2.1.2 Bias



2.1.3 Parameters

obi_num	0	Obi number	sched_exp_time	0.0	[s] Scheduled observation exposure time
ascdsver	8.4.5	Processing system revision	ontime	5535.6573959291	Sum of GTIs [s]
caldsver	4.5.1.1	 	ontime4	2194.0915637016	Sum of GTIs [s]
date	2012-09-12T03:13:29	Date and time of file creation	ontime5	5947.2597658634	Sum of GTIs [s]
revision	3	Processing version of data	ontime6	2340.0287104398	Sum of GTIs [s]
			ontime7	5535.6573959291	Sum of GTIs [s]
			ontime8	2398.3675200492	Sum of GTIs [s]
			ontime9	2327.0647099912	Sum of GTIs [s]
			l1events	1545906	Number of level 1 events

2.1.4 Events

	ccd 4	ccd 5	ccd 6	ccd 7	ccd 8	ccd 9		ccd 4	ccd 5	ccd 6	ccd 7	ccd 8	ccd 9
level 1 events	164058	406768	185882	418950	191229	179019	grade 0 events	82342	91544	91362	99672	94025	87610
rejected events	18849	43073	18576	28935	20748	19265		50%	22%	49%	23%	49%	48%
rejected %	11%	10%	9%	6%	10%	10%	grade 1 events	460	278	456	280	459	429
								0%	0%	0%	0%	0%	0%
							grade 2 events	25669	127084	28790	86345	29993	28409
								15%	31%	15%	20%	15%	15%
							grade 3 events	8723	24247	10497	40320	10734	9803
								5%	5%	5%	9%	5%	5%
							grade 4 events	9056	23944	10238	39551	10809	10038
								5%	5%	5%	9%	5%	5%
							grade 5 events	1312	8587	1480	6358	1649	1493
								0%	2%	0%	1%	0%	0%
							grade 6 events	19419	96876	26419	124127	24920	23991
								11%	23%	14%	29%	13%	13%
							grade 7 events	17077	34208	16640	22297	18640	17246
								10%	8%	8%	5%	9%	9%

2.2 Compared Parameters

Parameter	Planned	Actual	Parameter	Planned	Actual
Instrument	ACIS	ACIS	Obspar format version number	7	7
Detector	ACIS-456789	ACIS-456789	Obspar file type	PREDICTED	ACTUAL
Grating	NONE	NONE	Obspar update status	NONE	UPDATED
Data mode	FAINT	FAINT	On-chip summing requested	N	N
Observation mode	SECONDARY	SECONDARY	Subarray requested	NONE	NONE
[deg] Pointing RA	0	249.7181697021974	Alternating exposures requested	N	N
[deg] Pointing Dec	0	-3.223832186733697	[s] Primary exposure time	0.000000	3.2
[deg] Pointing Roll	0.0	81.70665297996756			
[mm] SIM focus pos	-0.684267	-0.6828225247311905			
[mm] SIM defocus	0	0.8505141146731063			
[mm] SIM translation stage pos	-190.132523	250.466033080201			
[mm] SIM translation stage offset	0	-0.01005468664627074			
[s] Observation start time (MET)	99628243.79700001	99628243.02859101			
Observation start date	2001-02-27T02:30:44	2001-02-27T02:30:43			
[s] Observation end time (MET)	99651966.398	99651965.62950701			
Observation end date	2001-02-27T09:06:06	2001-02-27T09:06:05			
Read mode	TIMED	TIMED			

2.3 Star Slots

2.4 FID Slots

A Summary

A.1 Status

V&V Scientist	Beth Sundheim
V&V Date (YYYY-MM-DD)	2012.09.18
V&V Edition	1
V&V Disposition and Status	OK
V&V Charge Time	5.5356573959291

A.2 Comments