

# V&V Reference Report

## L2 ASCDS Version : 7.6.9

Observation 61723 - L2 Version 001  
Chandra X-Ray Center

L2 Processing Date : Nov 8 2006

## Contents

<b>1</b>	<b>Front</b>	<b>2</b>
<b>2</b>	<b>OBI</b>	<b>3</b>
2.1	OBI . . . . .	3
2.1.1	Images . . . . .	3
2.1.2	Bias . . . . .	3
2.1.3	Parameters . . . . .	4
2.1.4	Events . . . . .	4
2.2	Compared Parameters . . . . .	5
2.3	Aspect . . . . .	6
2.4	Star Slots . . . . .	8
2.5	FID Slots . . . . .	8
<b>A</b>	<b>Summary</b>	<b>9</b>
A.1	Status . . . . .	9
A.2	Comments . . . . .	9

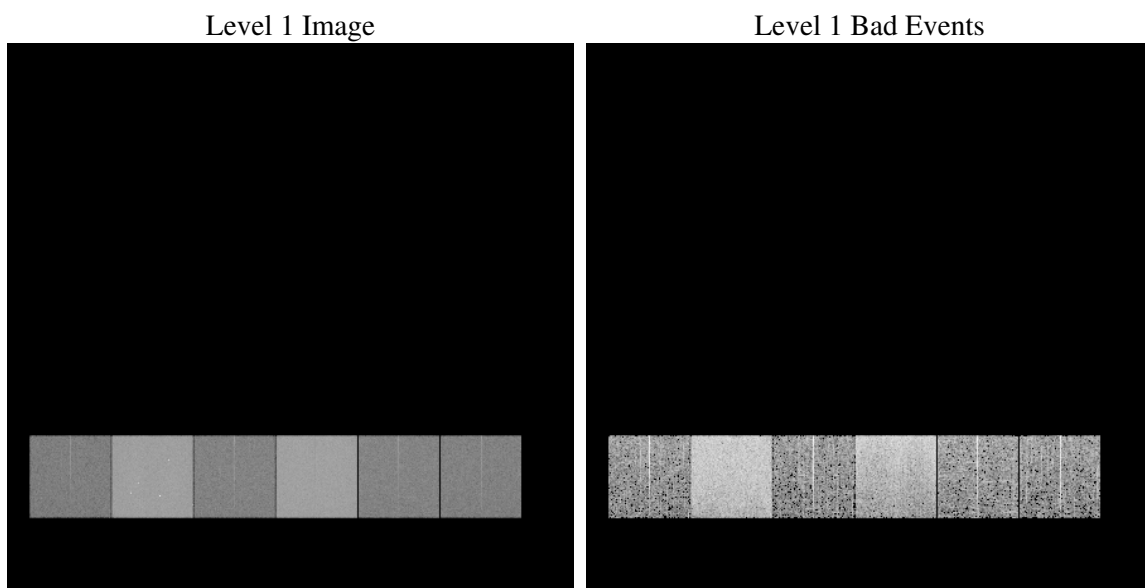
# 1 Front

seq_num	&#160
obs_id	61723
title	ACIS-456789 diagnostics
observer	CHANDRA engineering request/realtime commanding
object	&#160
dtcycle	0
cycle	P
ra_targ	0.0
dec_targ	0.0
ra_nom	249.7181697022
dec_nom	-3.2238321867337
roll_nom	81.706652979968
revision	2
ontime	5535.3691921681
livetime	5465.2770144577
ontime4	2194.0170164853
ontime5	5947.0126021057
ontime6	2339.8225866705
ontime7	5535.3691921681
ontime8	2398.2434762865
ontime9	2326.7354662269
l2events	1315845

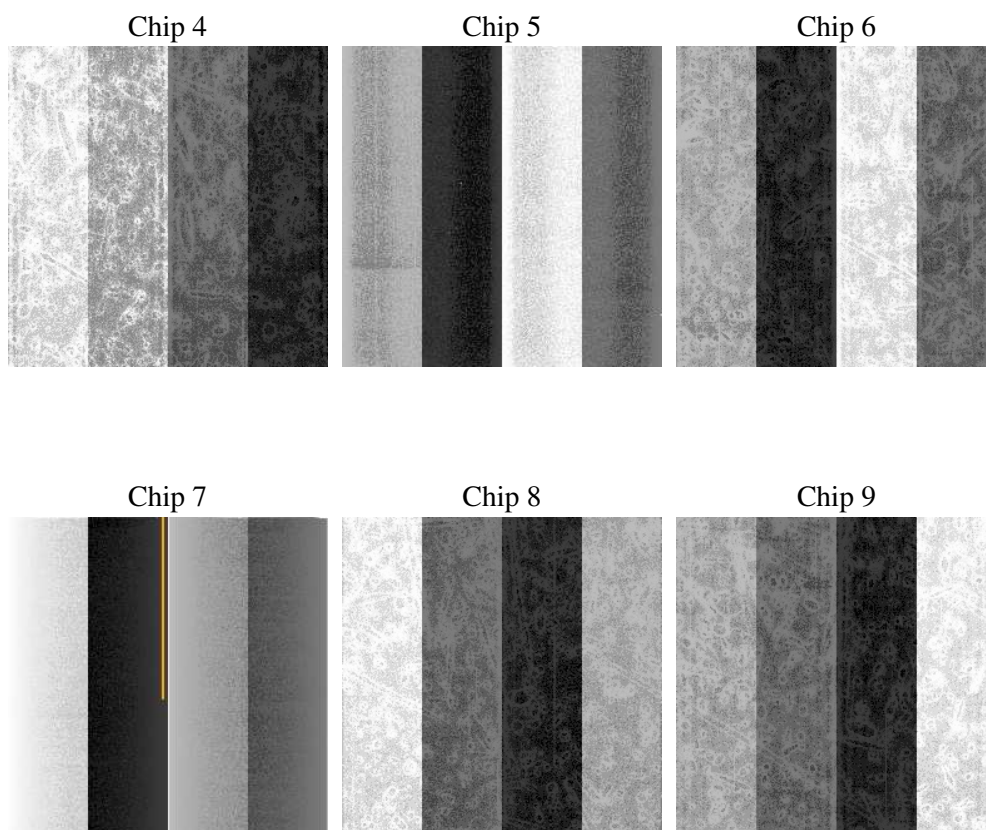
## 2 OBI

### 2.1 OBI

#### 2.1.1 Images



#### 2.1.2 Bias



### 2.1.3 Parameters

obi_num	0
ascdsver	7.6.9
caldsver	3.2.3
date	2006-11-09T02:13:58
revision	2

sched_exp_time	0.0
ontime	5535.6573959291
ontime4	2194.1821002513
ontime5	5947.2597658634
ontime6	2340.0287104398
ontime7	5535.6573959291
ontime8	2398.3675200492
ontime9	2327.0647099912
l1events	1545906

### 2.1.4 Events

	ccd 4	ccd 5	ccd 6	ccd 7	ccd 8	ccd 9
level 1 events	164058	406768	185882	418950	191229	179019
rejected events	18850	53533	18576	40837	20749	19263
rejected %	11%	13%	9%	9%	10%	10%

	ccd 4	ccd 5	ccd 6	ccd 7	ccd 8	ccd 9
grade 0 events	82346	45649	91367	71960	94027	87614
	50%	11%	49%	17%	49%	48%
grade 1 events	460	113	456	187	459	429
	0%	0%	0%	0%	0%	0%
grade 2 events	25665	168502	28785	111897	29991	28405
	15%	41%	15%	26%	15%	15%
grade 3 events	8723	12499	10497	29653	10737	9804
	5%	3%	5%	7%	5%	5%
grade 4 events	9057	12545	10239	28827	10813	10040
	5%	3%	5%	6%	5%	5%
grade 5 events	1313	6457	1480	6007	1650	1492
	0%	1%	0%	1%	0%	0%
grade 6 events	19417	114040	26418	135776	24912	23990
	11%	28%	14%	32%	13%	13%
grade 7 events	17077	46963	16640	34643	18640	17245
	10%	11%	8%	8%	9%	9%

## 2.2 Compared Parameters

Parameter	Planned	Actual	Parameter	Planned	Actual
Instrument	ACIS	ACIS	Obspar format version number	6	6
Detector	ACIS-456789	ACIS-456789	Obspar file type	PREDICTED	ACTUAL
Grating	NONE	NONE	Obspar update status	NONE	UPDATED
Data mode	FAINT	FAINT	On-chip summing requested	N	N
Observation mode	SECONDARY	SECONDARY	Subarray requested	NONE	NONE
Pointing RA	0	249.7181697021974	Alternating exposures requested	N	N
Pointing Dec	0	-3.223832186733708	Primary exposure time	0.000000	3.2
Pointing Roll	0.0	81.70665297996756			
SIM focus pos (mm)	-0.684267	-0.6828225247311905			
SIM defocus (mm)	0	0.8505141146731063			
SIM translation stage pos (mm)	-190.132523	250.466033080201			
SIM translation stage offset (mm)	0	-0.01005468664627074			
Observation start time	99628243.79700001	99628243.02859101			
Observation start date	2001-02-27T02:30:44	2001-02-27T02:30:43			
Observation end time	99651966.398	99651965.62950701			
Observation end date	2001-02-27T09:06:06	2001-02-27T09:06:05			
Read mode	TIMED	TIMED			

## 2.3 Aspect



## **2.4 Star Slots**

## **2.5 FID Slots**



## A Summary

### A.1 Status

V&V Scientist	Jen Lauer
V&V Date (YYYY-MM-DD)	2006.11.09
V&V Edition	1
V&V Disposition and Status	OK
V&V Charge Time	5.53536919

### A.2 Comments