

# V&V Reference Report

## L2 ASCDS Version : 8.4.5

Observation 61693 - L2 Version 3  
Chandra X-Ray Center

L2 Processing Date : Sep 14 2012

## Contents

<b>1</b>	<b>Front</b>	<b>2</b>
<b>2</b>	<b>OBI</b>	<b>3</b>
2.1	OBI . . . . .	3
2.1.1	Images . . . . .	3
2.1.2	Bias . . . . .	3
2.1.3	Parameters . . . . .	4
2.1.4	Events . . . . .	4
2.2	Compared Parameters . . . . .	5
2.3	Star Slots . . . . .	6
2.4	FID Slots . . . . .	6
<b>A</b>	<b>Summary</b>	<b>7</b>
A.1	Status . . . . .	7
A.2	Comments . . . . .	7

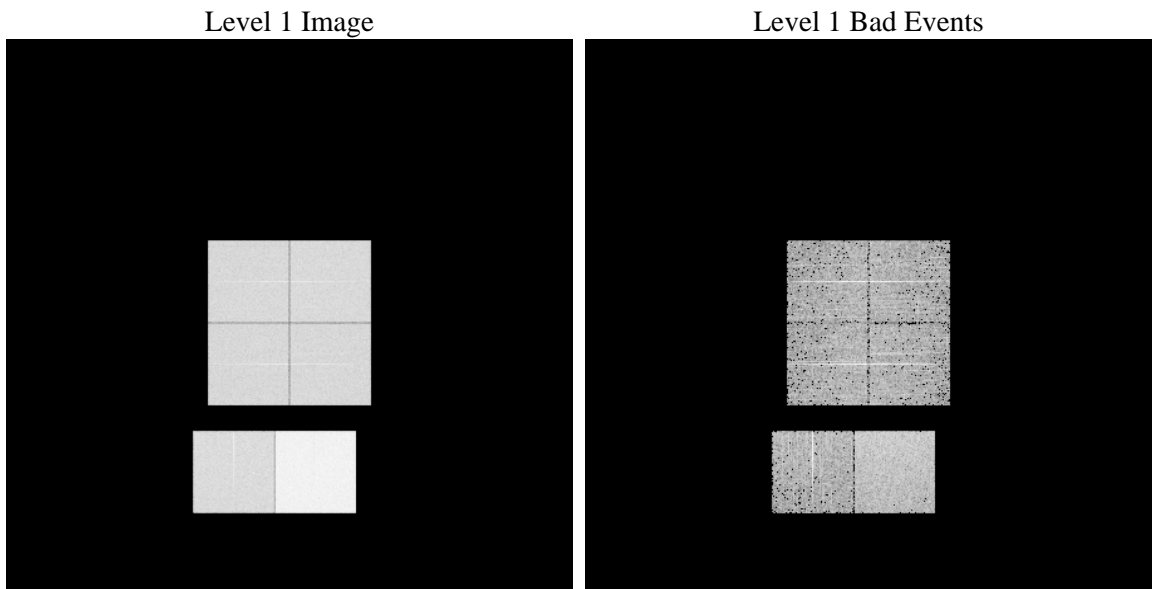
# 1 Front

seq_num	&#160	Sequence number
obs_id	61693	Observation id
title	ACIS-012367 diagnostics	Proposal title
observer	CHANDRA engineering request/realtime commanding	Principal investig
object	&#160	Source name
dtcycle	0	&#160
cycle	P	events from which exps? Prim/Second/Both
ra_targ	0.0	Observer's specified target RA [deg]
dec_targ	0.0	Observer's specified target Dec [deg]
ra_nom	267.94737870088	Nominal RA [deg]
dec_nom	72.023476595291	Nominal Dec [deg]
roll_nom	91.881155733222	Nominal Roll [deg]
revision	3	Processing version of data
ontime	6671.3944490105	Sum of GTIs [s]
livetime	6586.9172354657	Livetime [s]
ontime0	2704.3861442357	Sum of GTIs [s]
ontime1	2809.9787015766	Sum of GTIs [s]
ontime2	2586.3473709226	Sum of GTIs [s]
ontime3	2616.9604735821	Sum of GTIs [s]
ontime6	2858.5944012552	Sum of GTIs [s]
ontime7	6671.3944490105	Sum of GTIs [s]
l2events	1333986	Number of level 2 events

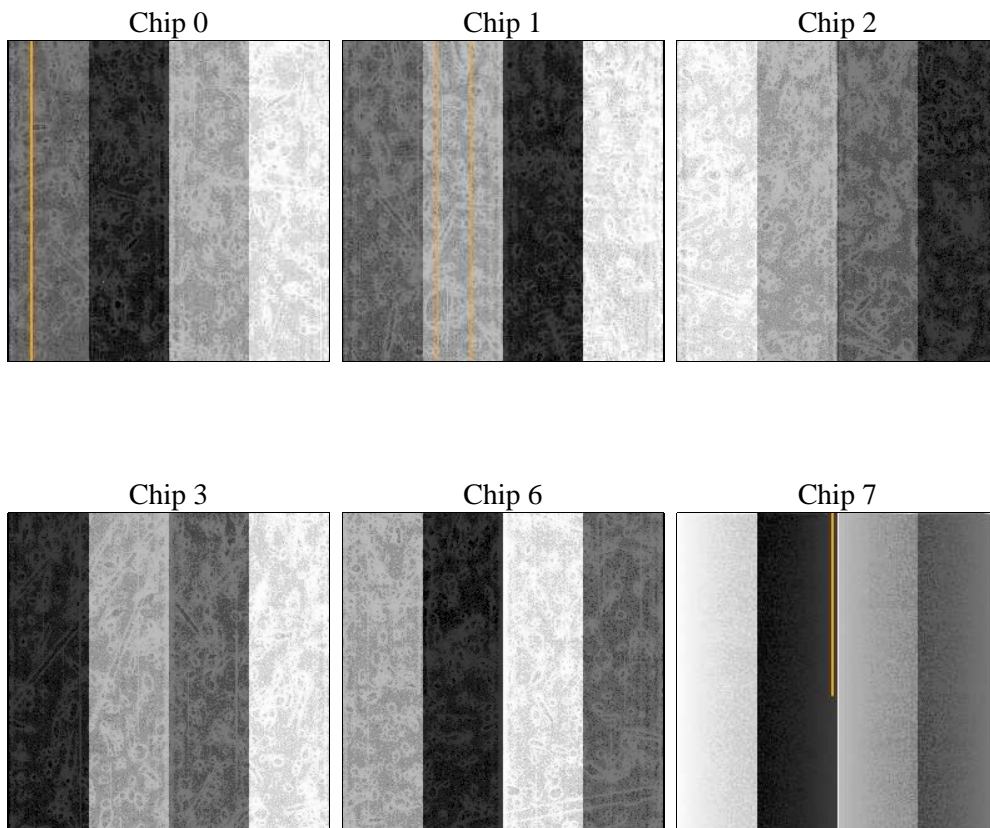
## 2 OBI

### 2.1 OBI

#### 2.1.1 Images



#### 2.1.2 Bias



### 2.1.3 Parameters

obi_num	0	Obi number	sched_exp_time	0.0	[s] Scheduled observation exposure time
ascdsver	8.4.5	Processing system revision	ontime	6671.3944490105	Sum of GTIs [s]
caldsver	4.5.1.1	&#160	ontime0	2704.3861442357	Sum of GTIs [s]
date	2012-09-14T11:42:32	Date and time of file creation	ontime1	2809.9787015766	Sum of GTIs [s]
revision	3	Processing version of data	ontime2	2586.3473709226	Sum of GTIs [s]
			ontime3	2616.9604735821	Sum of GTIs [s]
			ontime6	2858.5944012552	Sum of GTIs [s]
			ontime7	6671.3944490105	Sum of GTIs [s]
			l1events	1533375	Number of level 1 events

### 2.1.4 Events

	ccd 0	ccd 1	ccd 2	ccd 3	ccd 6	ccd 7		ccd 0	ccd 1	ccd 2	ccd 3	ccd 6	ccd 7
level 1 events	202852	209879	197307	199712	224868	498757	grade 0 events	100287	103808	97355	99705	110272	118668
rejected events	21052	21134	21680	21563	22375	35166		49%	49%	49%	49%	49%	23%
rejected %	10%	10%	10%	10%	9%	7%	grade 1 events	520	554	512	587	579	308
								0%	0%	0%	0%	0%	0%
							grade 2 events	32453	33406	30966	31184	35030	101658
								15%	15%	15%	15%	15%	20%
							grade 3 events	11488	12062	11073	11275	12665	47439
								5%	5%	5%	5%	5%	9%
							grade 4 events	11619	11989	11203	11400	12451	46934
								5%	5%	5%	5%	5%	9%
							grade 5 events	1497	1629	1453	1562	1851	7407
								0%	0%	0%	0%	0%	1%
							grade 6 events	26169	27480	25030	24830	32075	149137
								12%	13%	12%	12%	14%	29%
							grade 7 events	18819	18951	19715	19169	19945	27206
								9%	9%	9%	9%	8%	5%

## 2.2 Compared Parameters

Parameter	Planned	Actual	Parameter	Planned	Actual
Instrument	ACIS	ACIS	Obspar format version number	7	7
Detector	ACIS-012367	ACIS-012367	Obspar file type	PREDICTED	ACTUAL
Grating	NONE	NONE	Obspar update status	NONE	UPDATED
Data mode	FAINT	FAINT	On-chip summing requested	N	N
Observation mode	SECONDARY	SECONDARY	Subarray requested	NONE	NONE
[deg] Pointing RA	0	267.9473787008753	Alternating exposures requested	N	N
[deg] Pointing Dec	0	72.02347659529133	[s] Primary exposure time	0.000000	3.2
[deg] Pointing Roll	0.0	91.88115573322213			
[mm] SIM focus pos	-0.782348	-1.428180813131781			
[mm] SIM defocus	0	0.1051558262725154			
[mm] SIM translation stage pos	-233.592463	250.466033080201			
[mm] SIM translation stage offset	0	-0.01005468664627074			
[s] Observation start time (MET)	101469254.568	101469253.79974			
Observation start date	2001-03-20T09:54:15	2001-03-20T09:54:13			
[s] Observation end time (MET)	101480871.919	101480871.15018			
Observation end date	2001-03-20T13:07:52	2001-03-20T13:07:51			
Read mode	TIMED	TIMED			

## **2.3 Star Slots**

## **2.4 FID Slots**

## A Summary

### A.1 Status

V&V Scientist	Beth Sundheim
V&V Date (YYYY-MM-DD)	2012.09.18
V&V Edition	1
V&V Disposition and Status	OK
V&V Charge Time	6.6713944490105

### A.2 Comments