

V&V Reference Report

L2 ASCDS Version : 7.6.9

Observation 61693 - L2 Version 001
Chandra X-Ray Center

L2 Processing Date : Nov 15 2006

Contents

1	Front	2
2	OBI	3
2.1	OBI	3
2.1.1	Images	3
2.1.2	Bias	3
2.1.3	Parameters	4
2.1.4	Events	4
2.2	Compared Parameters	5
2.3	Aspect	6
2.4	Star Slots	8
2.5	FID Slots	8
A	Summary	9
A.1	Status	9
A.2	Comments	9

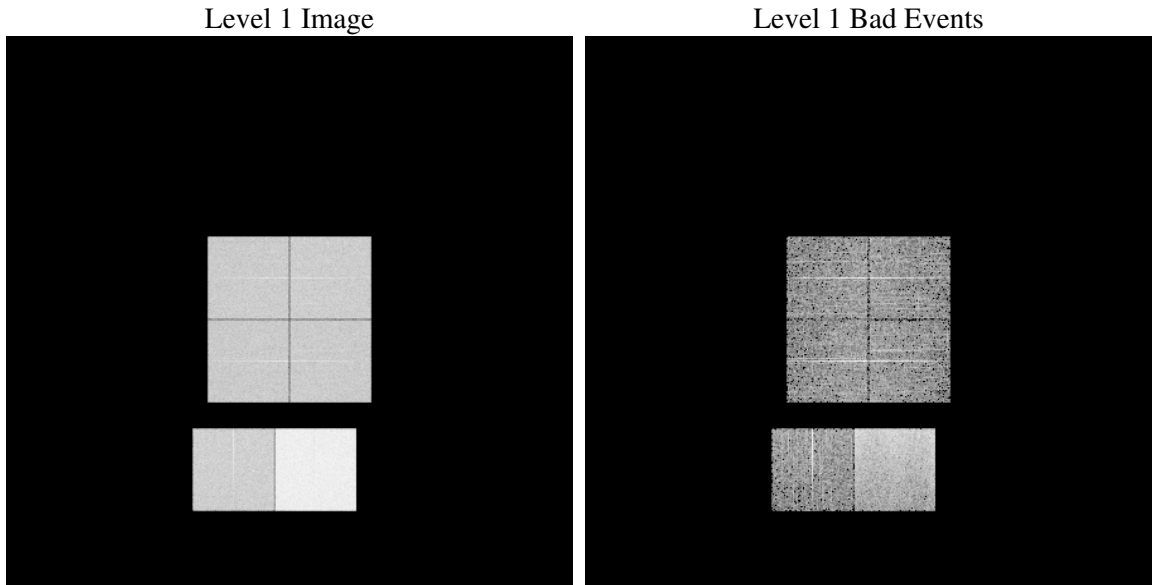
1 Front

seq_num	
obs_id	61693
title	ACIS-012367 diagnostics
observer	CHANDRA engineering request/realtime commanding
object	
dtcycle	0
cycle	P
ra_targ	0.0
dec_targ	0.0
ra_nom	267.94737870088
dec_nom	72.023476595291
roll_nom	91.881155733222
revision	2
ontime	6672.0333066732
livetime	6587.5480035279
ontime0	2705.0660419017
ontime1	2809.099639222
ontime2	2585.5093485713
ontime3	2617.5582912415
ontime6	2857.7974189073
ontime7	6672.0333066732
l2events	1319632

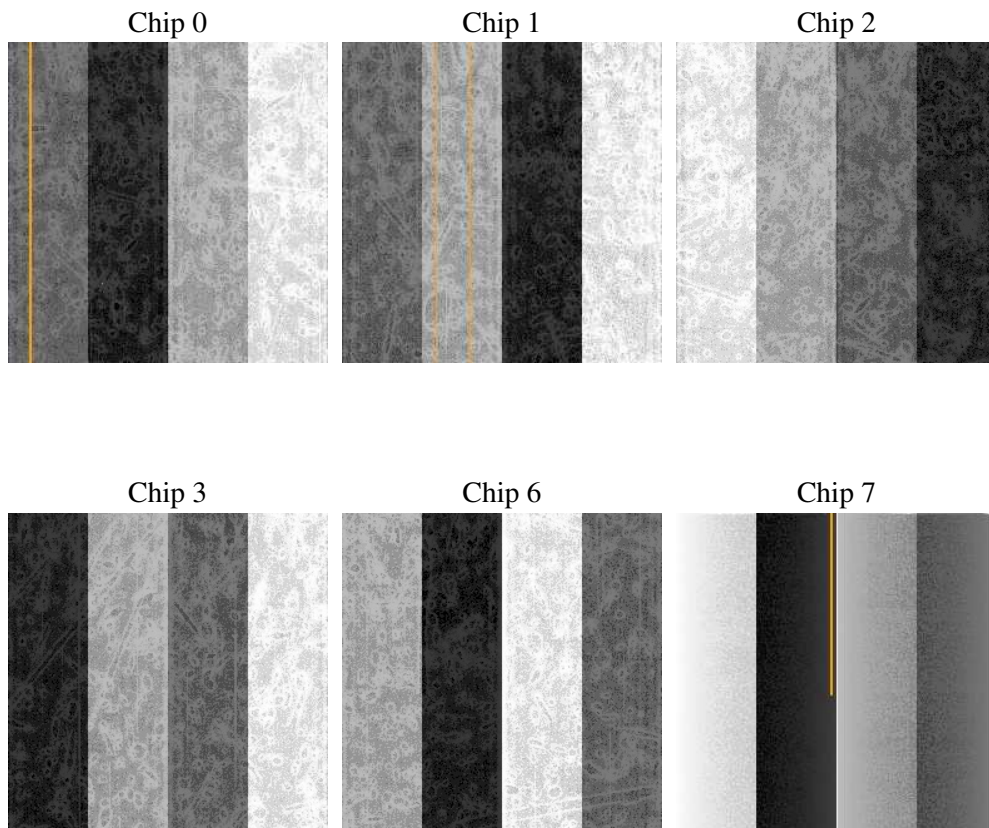
2 OBI

2.1 OBI

2.1.1 Images



2.1.2 Bias



2.1.3 Parameters

obi_num	0
ascdsver	7.6.9
caldsver	3.2.4
date	2006-11-16T02:46:07
revision	2

sched_exp_time	0.0
ontime	6673.232925877
ontime0	2706.2656611055
ontime1	2809.9787015766
ontime2	2586.3473709226
ontime3	2618.7579104453
ontime6	2858.5944012552
ontime7	6673.232925877
l1events	1533375

2.1.4 Events

	ccd 0	ccd 1	ccd 2	ccd 3	ccd 6	ccd 7
level 1 events	202852	209879	197307	199712	224868	498757
rejected events	20836	21132	21678	21317	22376	50092
rejected %	10%	10%	10%	10%	9%	10%

	ccd 0	ccd 1	ccd 2	ccd 3	ccd 6	ccd 7
grade 0 events	100293	103810	97358	99711	110278	84736
	49%	49%	49%	49%	49%	16%
grade 1 events	520	556	512	587	580	195
	0%	0%	0%	0%	0%	0%
grade 2 events	32447	33404	30963	31178	35024	132988
	15%	15%	15%	15%	15%	26%
grade 3 events	11488	12063	11075	11276	12666	34403
	5%	5%	5%	5%	5%	6%
grade 4 events	11622	11990	11204	11402	12453	33712
	5%	5%	5%	5%	5%	6%
grade 5 events	1498	1628	1455	1561	1851	7214
	0%	0%	0%	0%	0%	1%
grade 6 events	26166	27480	25029	24828	32071	162826
	12%	13%	12%	12%	14%	32%
grade 7 events	18818	18948	19711	19169	19945	42683
	9%	9%	9%	9%	8%	8%

2.2 Compared Parameters

Parameter	Planned	Actual	Parameter	Planned	Actual
Instrument	ACIS	ACIS	Obspar format version number	6	6
Detector	ACIS-012367	ACIS-012367	Obspar file type	PREDICTED	ACTUAL
Grating	NONE	NONE	Obspar update status	NONE	UPDATED
Data mode	FAINT	FAINT	On-chip summing requested	N	N
Observation mode	SECONDARY	SECONDARY	Subarray requested	NONE	NONE
Pointing RA	0	267.9473787008753	Alternating exposures requested	N	N
Pointing Dec	0	72.02347659529136	Primary exposure time	0.000000	3.2
Pointing Roll	0.0	91.88115573322199			
SIM focus pos (mm)	-0.782348	-1.428180813131781			
SIM defocus (mm)	0	0.1051558262725154			
SIM translation stage pos (mm)	-233.592463	250.466033080201			
SIM translation stage offset (mm)	0	-0.01005468664627074			
Observation start time	101469254.568	101469253.79974			
Observation start date	2001-03-20T09:54:15	2001-03-20T09:54:13			
Observation end time	101480871.919	101480871.15018			
Observation end date	2001-03-20T13:07:52	2001-03-20T13:07:51			
Read mode	TIMED	TIMED			

2.3 Aspect

2.4 Star Slots

2.5 FID Slots

A Summary

A.1 Status

V&V Scientist	Jen Lauer
V&V Date (YYYY-MM-DD)	2006.11.16
V&V Edition	1
V&V Disposition and Status	OK
V&V Charge Time	6.6720333

A.2 Comments