

V&V Reference Report

L2 ASCDS Version : 8.4.5

Observation 61633 - L2 Version 3
Chandra X-Ray Center

L2 Processing Date : Sep 16 2012

Contents

1	Front	2
2	OBI	3
2.1	OBI	3
2.1.1	Images	3
2.1.2	Bias	3
2.1.3	Parameters	4
2.1.4	Events	4
2.2	Compared Parameters	5
2.3	Star Slots	6
2.4	FID Slots	6
A	Summary	7
A.1	Status	7
A.2	Comments	7

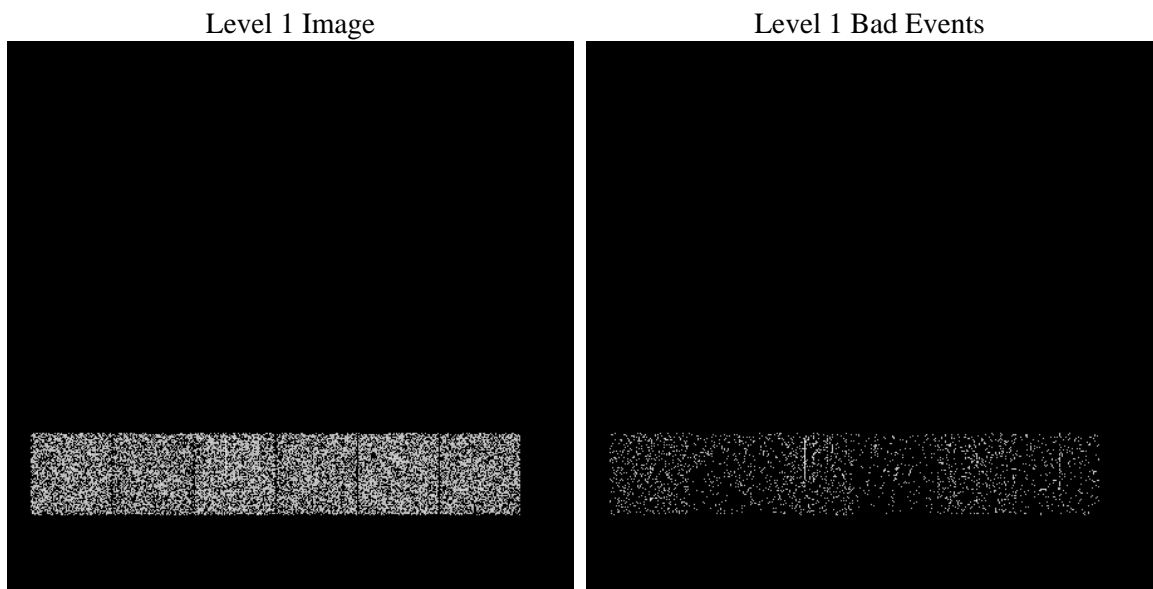
1 Front

seq_num	 	Sequence number
obs_id	61633	Observation id
title	ACIS-456789 diagnostics	Proposal title
observer	CHANDRA engineering request/realtime commanding	Principal investig
object	 	Source name
dtcycle	0	
cycle	P	events from which exps? Prim/Second/Both
ra_targ	0.0	Observer's specified target RA [deg]
dec_targ	0.0	Observer's specified target Dec [deg]
ra_nom	309.95259846197	Nominal RA [deg]
dec_nom	60.017408842739	Nominal Dec [deg]
roll_nom	111.6735512468	Nominal Roll [deg]
revision	3	Processing version of data
ontime	47.416266649961	Sum of GTIs [s]
livetime	46.815853330992	Livetime [s]
ontime4	48.000000029802	Sum of GTIs [s]
ontime5	47.457306653261	Sum of GTIs [s]
ontime6	48.000000029802	Sum of GTIs [s]
ontime7	47.416266649961	Sum of GTIs [s]
ontime8	48.000000029802	Sum of GTIs [s]
ontime9	47.375226646662	Sum of GTIs [s]
l2events	17837	Number of level 2 events

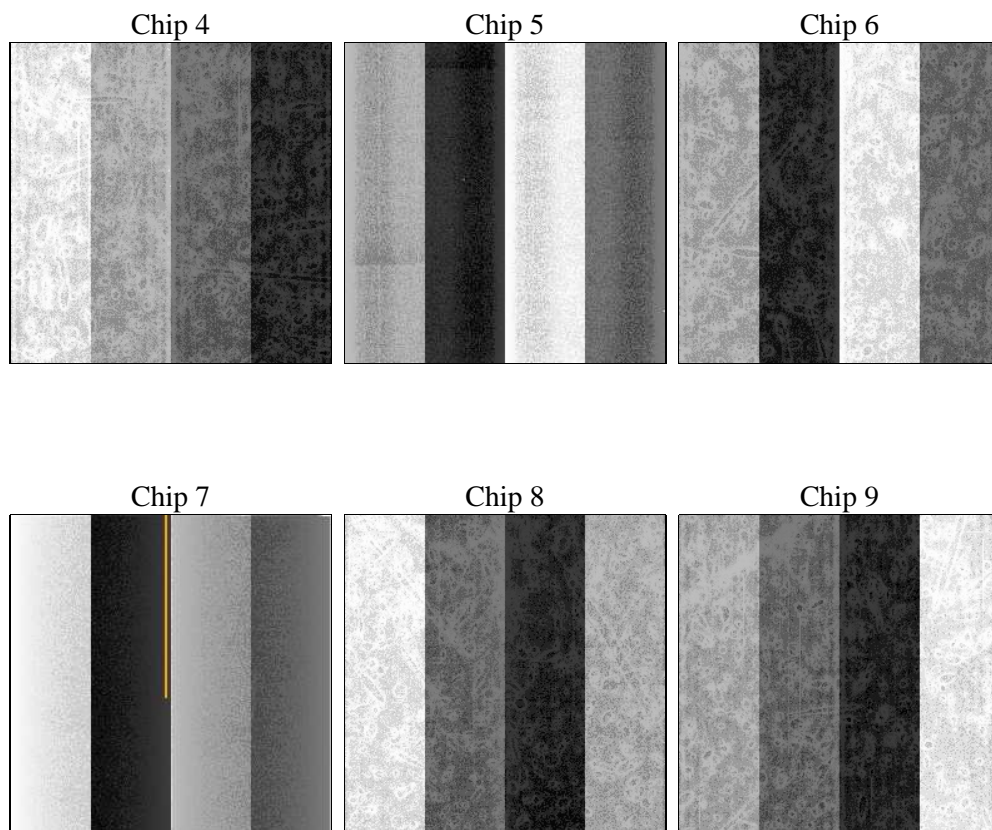
2 OBI

2.1 OBI

2.1.1 Images



2.1.2 Bias



2.1.3 Parameters

obi_num	0	Obi number	sched_exp_time	0.0	[s] Scheduled observation exposure time
ascdsver	8.4.5	Processing system revision	ontime	47.416266649961	Sum of GTIs [s]
caldsver	4.5.1.1	 	ontime4	48.000000029802	Sum of GTIs [s]
date	2012-09-16T23:06:01	Date and time of file creation	ontime5	47.457306653261	Sum of GTIs [s]
revision	3	Processing version of data	ontime6	48.000000029802	Sum of GTIs [s]
			ontime7	47.416266649961	Sum of GTIs [s]
			ontime8	48.000000029802	Sum of GTIs [s]
			ontime9	47.375226646662	Sum of GTIs [s]
			l1events	21935	Number of level 1 events

2.1.4 Events

	ccd 4	ccd 5	ccd 6	ccd 7	ccd 8	ccd 9
level 1 events	3665	3200	4131	3512	3923	3504
rejected events	675	341	803	253	623	373
rejected %	18%	10%	19%	7%	15%	10%

	ccd 4	ccd 5	ccd 6	ccd 7	ccd 8	ccd 9
grade 0 events	1856	782	1931	890	1909	1713
	50%	24%	46%	25%	48%	48%
grade 1 events	18	4	10	0	10	11
	0%	0%	0%	0%	0%	0%
grade 2 events	533	964	617	703	632	541
	14%	30%	14%	20%	16%	15%
grade 3 events	212	171	221	329	222	203
	5%	5%	5%	9%	5%	5%
grade 4 events	181	177	198	329	231	219
	4%	5%	4%	9%	5%	6%
grade 5 events	22	75	26	47	28	31
	0%	2%	0%	1%	0%	0%
grade 6 events	442	765	596	1008	536	455
	12%	23%	14%	28%	13%	12%
grade 7 events	401	262	532	206	355	331
	10%	8%	12%	5%	9%	9%

2.2 Compared Parameters

Parameter	Planned	Actual	Parameter	Planned	Actual
Instrument	ACIS	ACIS	Obspar format version number	7	7
Detector	ACIS-456789	ACIS-456789	Obspar file type	PREDICTED	ACTUAL
Grating	NONE	NONE	Obspar update status	NONE	UPDATED
Data mode	FAINT	FAINT	On-chip summing requested	N	N
Observation mode	SECONDARY	SECONDARY	Subarray requested	NONE	NONE
[deg] Pointing RA	0	309.9525984619728	Alternating exposures requested	N	N
[deg] Pointing Dec	0	60.01740884273886	[s] Primary exposure time	3.2	3.2
[deg] Pointing Roll	0.0	111.6735512467958			
[mm] SIM focus pos	-0.684267	-0.7809083437167272			
[mm] SIM defocus	0	0.7524282956875696			
[mm] SIM translation stage pos	-190.132523	250.466033080201			
[mm] SIM translation stage offset	0	-0.01005468664627074			
[s] Observation start time (MET)	106450916.711358	106450915.94291			
Observation start date	2001-05-17T01:41:57	2001-05-17T01:41:55			
[s] Observation end time (MET)	106452706.361441	106452705.59298			
Observation end date	2001-05-17T02:11:46	2001-05-17T02:11:45			
Read mode	TIMED	TIMED			

2.3 Star Slots

2.4 FID Slots

A Summary

A.1 Status

V&V Scientist	Jen Lauer
V&V Date (YYYY-MM-DD)	2012.09.19
V&V Edition	1
V&V Disposition and Status	OK
V&V Charge Time	0.047416266649961

A.2 Comments