

V&V Reference Report

L2 ASCDS Version : 7.6.9

Observation 61633 - L2 Version 001
Chandra X-Ray Center

L2 Processing Date : Nov 21 2006

Contents

1	Front	2
2	OBI	3
2.1	OBI	3
2.1.1	Images	3
2.1.2	Bias	3
2.1.3	Parameters	4
2.1.4	Events	4
2.2	Compared Parameters	5
2.3	Aspect	6
2.4	Star Slots	8
2.5	FID Slots	8
A	Summary	9
A.1	Status	9
A.2	Comments	9

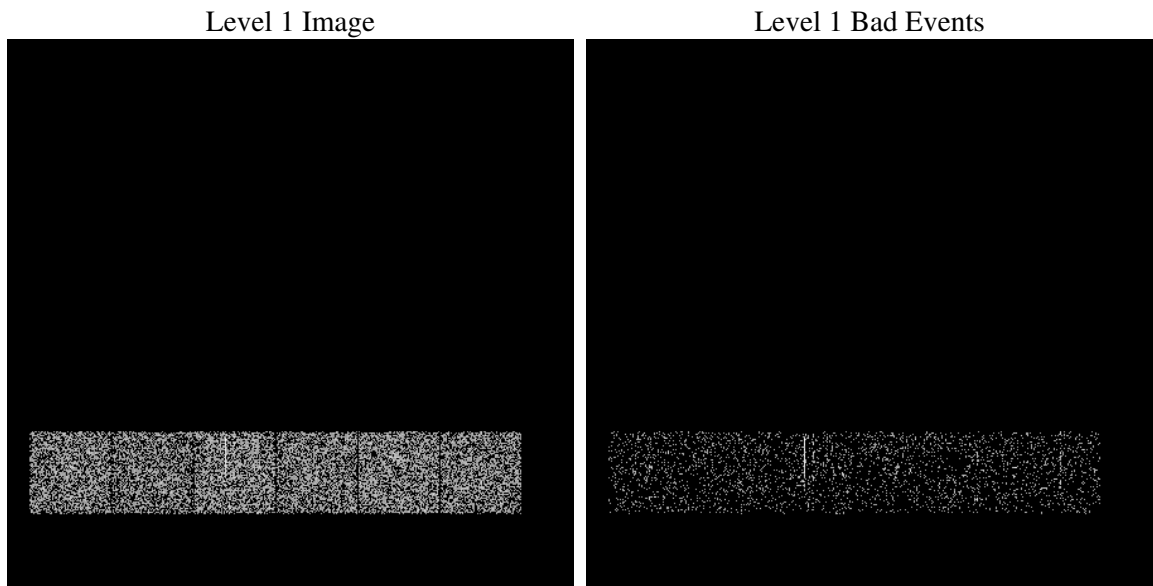
1 Front

seq_num	
obs_id	61633
title	ACIS-456789 diagnostics
observer	CHANDRA engineering request/realtime commanding
object	
dtcycle	0
cycle	P
ra_targ	0.0
dec_targ	0.0
ra_nom	309.95259846197
dec_nom	60.017408842739
roll_nom	111.6735512468
revision	2
ontime	45.816266655922
livetime	45.236113500281
ontime4	48.000000044703
ontime5	45.857306659222
ontime6	48.000000044703
ontime7	45.816266655922
ontime8	48.000000044703
ontime9	45.775226652622
l2events	17069

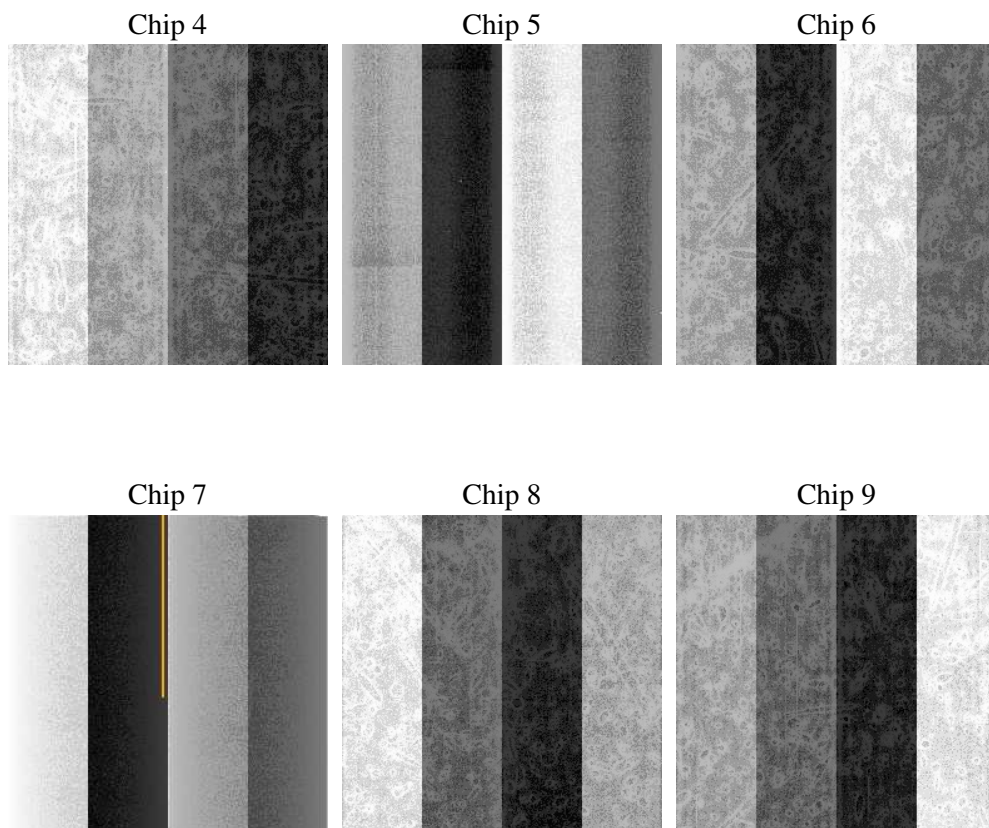
2 OBI

2.1 OBI

2.1.1 Images



2.1.2 Bias



2.1.3 Parameters

obi_num	0
ascdsver	7.6.9
caldbver	3.2.4
date	2006-11-21T22:06:50
revision	2

sched_exp_time	0.0
ontime	48.615011736751
ontime4	51.856001898646
ontime5	48.615011736751
ontime6	51.856001898646
ontime7	48.615011736751
ontime8	51.856001898646
ontime9	48.615011736751
l1events	21935

2.1.4 Events

	ccd 4	ccd 5	ccd 6	ccd 7	ccd 8	ccd 9
level 1 events	3665	3200	4131	3512	3923	3504
rejected events	634	616	797	568	630	578
rejected %	17%	19%	19%	16%	16%	16%

	ccd 4	ccd 5	ccd 6	ccd 7	ccd 8	ccd 9
grade 0 events	1856	375	1931	671	1909	1713
	50%	11%	46%	19%	48%	48%
grade 1 events	18	3	10	0	10	11
	0%	0%	0%	0%	0%	0%
grade 2 events	533	1346	617	903	632	541
	14%	42%	14%	25%	16%	15%
grade 3 events	212	80	221	255	222	203
	5%	2%	5%	7%	5%	5%
grade 4 events	181	93	198	250	231	219
	4%	2%	4%	7%	5%	6%
grade 5 events	22	56	26	37	28	31
	0%	1%	0%	1%	0%	0%
grade 6 events	442	883	596	1084	536	455
	12%	27%	14%	30%	13%	12%
grade 7 events	401	364	532	312	355	331
	10%	11%	12%	8%	9%	9%

2.2 Compared Parameters

Parameter	Planned	Actual	Parameter	Planned	Actual
Instrument	ACIS	ACIS	Obspar format version number	6	6
Detector	ACIS-456789	ACIS-456789	Obspar file type	PREDICTED	ACTUAL
Grating	NONE	NONE	Obspar update status	NONE	UPDATED
Data mode	FAINT	FAINT	On-chip summing requested	N	N
Observation mode	SECONDARY	SECONDARY	Subarray requested	NONE	NONE
Pointing RA	0	309.9525984619728	Alternating exposures requested	N	N
Pointing Dec	0	60.01740884273886	Primary exposure time	3.2	3.2
Pointing Roll	0.0	111.6735512467958			
SIM focus pos (mm)	-0.684267	-0.7809083437167272			
SIM defocus (mm)	0	0.7524282956875696			
SIM translation stage pos (mm)	-190.132523	250.466033080201			
SIM translation stage offset (mm)	0	-0.01005468664627074			
Observation start time	106450916.711358	106450915.94291			
Observation start date	2001-05-17T01:41:57	2001-05-17T01:41:55			
Observation end time	106452706.361441	106452705.59298			
Observation end date	2001-05-17T02:11:46	2001-05-17T02:11:45			
Read mode	TIMED	TIMED			

2.3 Aspect

2.4 Star Slots

2.5 FID Slots

A Summary

A.1 Status

V&V Scientist	Jen Lauer
V&V Date (YYYY-MM-DD)	2006.11.22
V&V Edition	1
V&V Disposition and Status	OK
V&V Charge Time	0.04581626

A.2 Comments