

V&V Reference Report

L2 ASCDS Version : 8.5.1.1

Observation 6163 - L2 Version 3
Chandra X-Ray Center

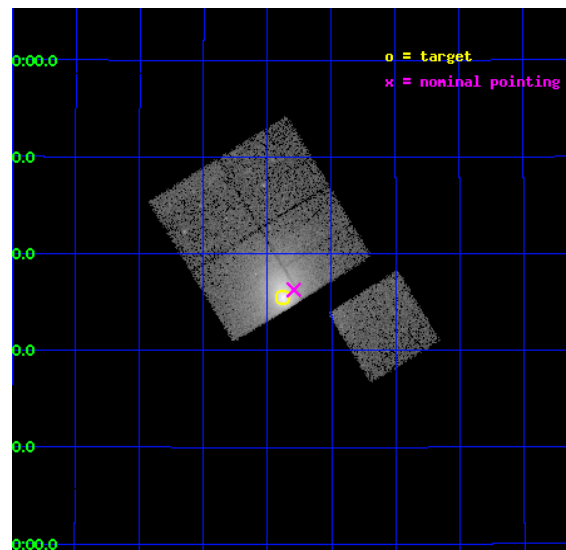
L2 Processing Date : Dec 21 2012

Contents

1	Front	2
2	OBI	3
2.1	OBI	3
2.1.1	Images	3
2.1.2	Bias	3
2.1.3	Parameters	4
2.1.4	Events	4
2.2	Compared Parameters	5
2.3	Aspect	6
2.4	Star Slots	9
2.4.1	Slot 3	9
2.4.2	Slot 4	10
2.4.3	Slot 5	11
2.4.4	Slot 6	12
2.4.5	Slot 7	13
2.5	FID Slots	14
2.5.1	Slot 0	14
2.5.2	Slot 1	15
2.5.3	Slot 2	16
A	Summary	17
A.1	Status	17
A.2	Comments	17

1 Front

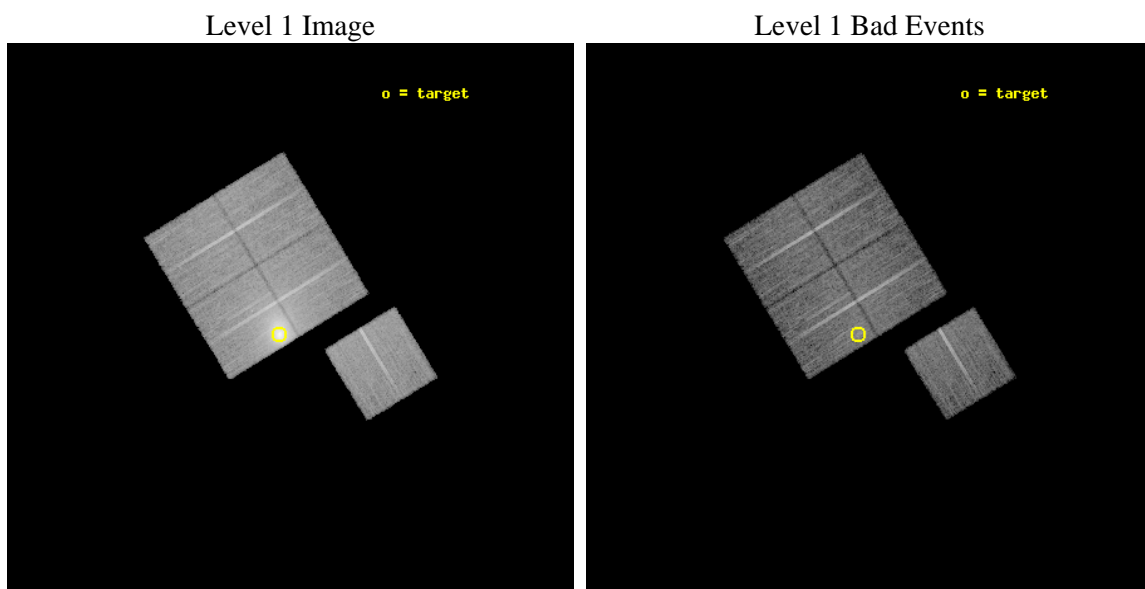
seq_num	890035	Sequence number
obs_id	6163	Observation id
title	Monitoring the Spatial Variation of the ACIS Contaminant with Abell 1795	Proposal title
observer	Dr. CXC Calibration	Principal investigator
object	A1795	Source name
dtcycle	0	
cycle	P	events from which exps? Prim/Second/Both
ra_targ	207.219583	Observer's specified target RA [deg]
dec_targ	26.590833	Observer's specified target Dec [deg]
ra_nom	207.19841333684	Nominal RA [deg]
dec_nom	26.604577020106	Nominal Dec [deg]
roll_nom	148.56547336923	Nominal Roll [deg]
revision	3	Processing version of data
ontime	15049.616305262	Sum of GTIs [s]
livetime	14852.981988867	Livetime [s]
ontime0	15049.493185252	Sum of GTIs [s]
ontime1	15049.534225255	Sum of GTIs [s]
ontime2	15046.434294909	Sum of GTIs [s]
ontime3	15049.616305262	Sum of GTIs [s]
ontime6	15049.452145249	Sum of GTIs [s]
l2events	143350	Number of level 2 events



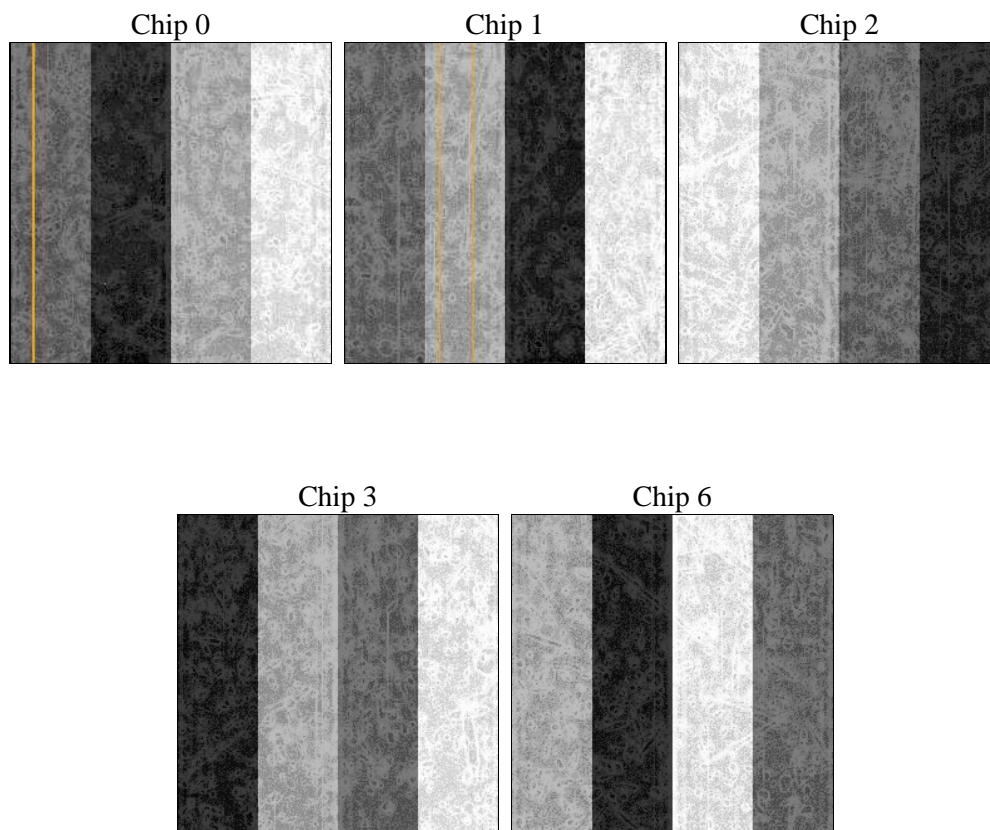
2 OBI

2.1 OBI

2.1.1 Images



2.1.2 Bias



2.1.3 Parameters

obi_num	0	Obi number	sched_exp_time	15000.000000	[s] Scheduled observation exposure time
ascdsver	8.5.1.1	Processing system revision	ontime	15049.616305262	Sum of GTIs [s]
caldbver	4.5.5	 	ontime0	15049.493185252	Sum of GTIs [s]
date	2012-12-21T03:39:50	Date and time of file creation	ontime1	15049.534225255	Sum of GTIs [s]
revision	3	Processing version of data	ontime2	15046.434294909	Sum of GTIs [s]
			ontime3	15049.616305262	Sum of GTIs [s]
			ontime6	15049.452145249	Sum of GTIs [s]
			l1events	568953	Number of level 1 events

2.1.4 Events

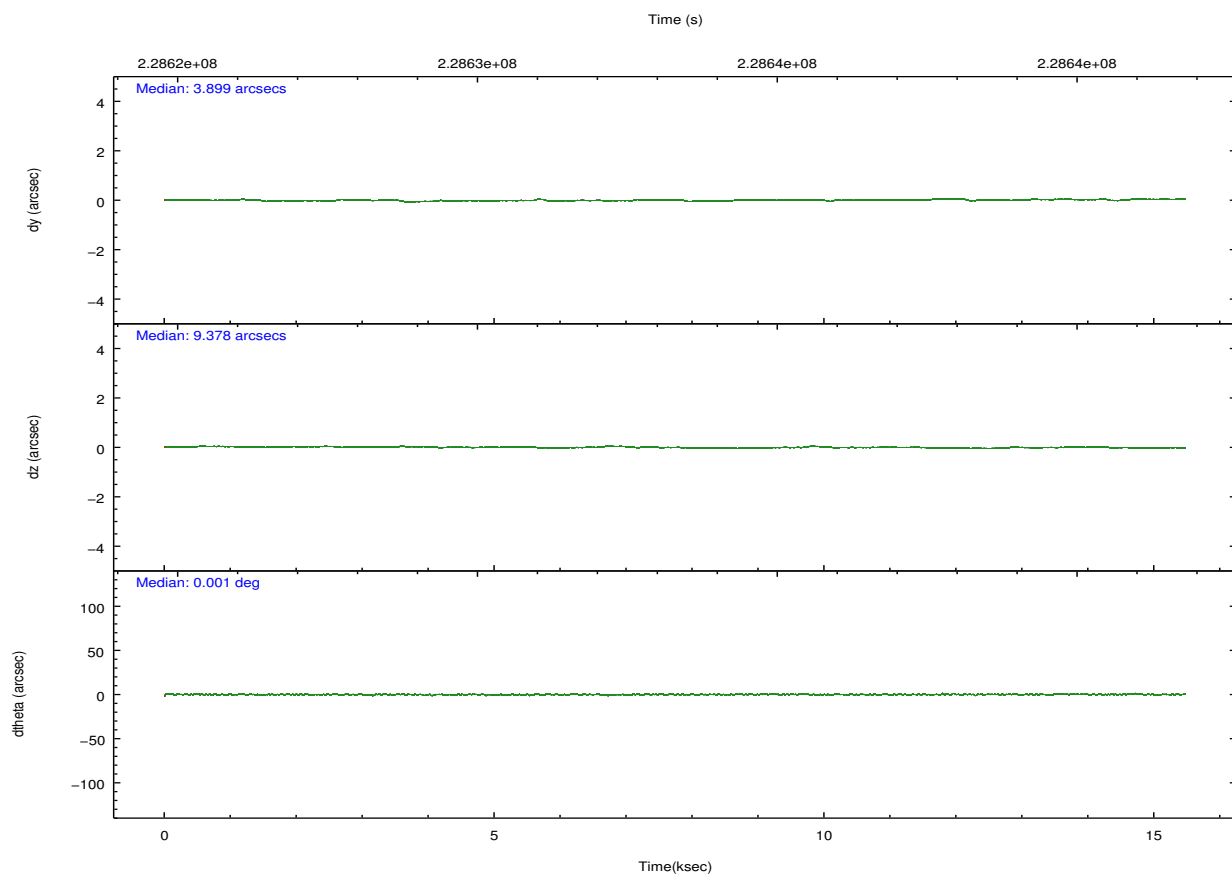
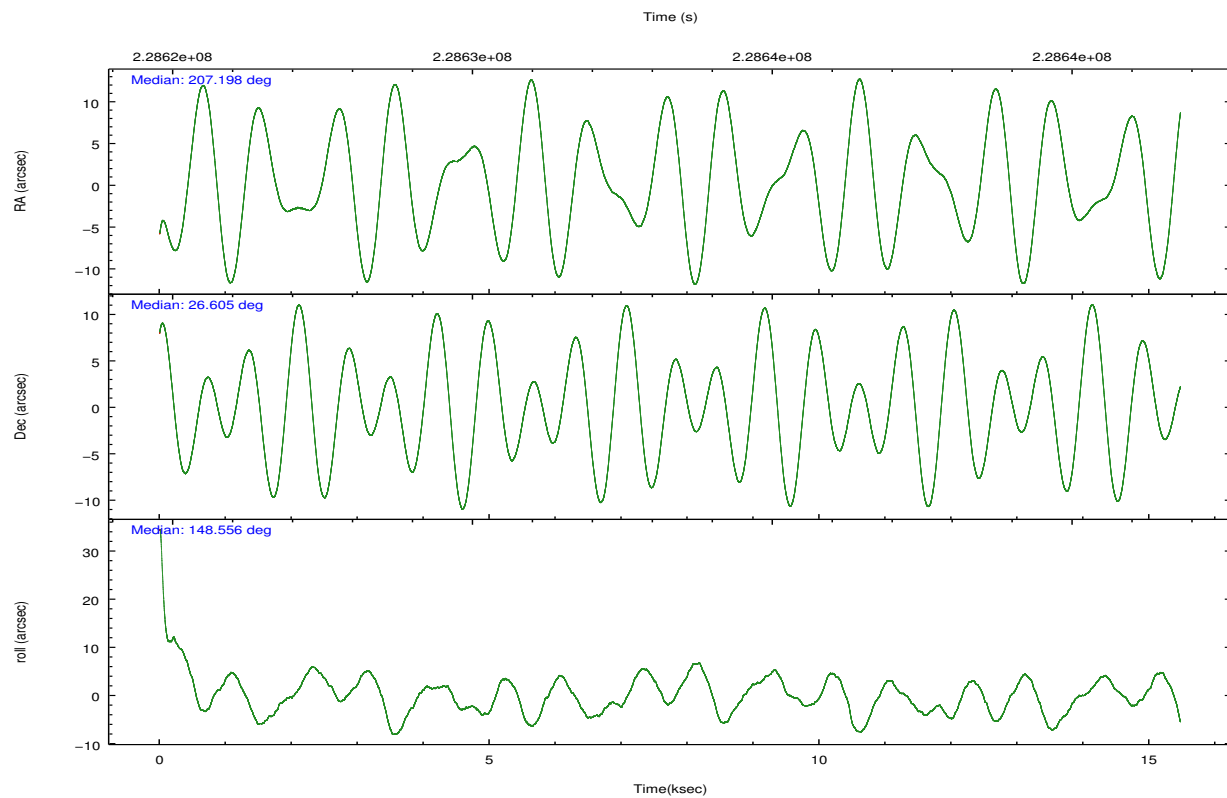
	ccd 0	ccd 1	ccd 2	ccd 3	ccd 6
level 1 events	89449	91430	108690	183513	95871
rejected events	78766	79373	83691	88069	84387
rejected %	88%	86%	76%	47%	88%

	ccd 0	ccd 1	ccd 2	ccd 3	ccd 6
grade 0 events	4322	4995	16512	74401	4951
	4%	5%	15%	40%	5%
grade 1 events	48	55	117	459	53
	0%	0%	0%	0%	0%
grade 2 events	2324	2397	3560	10179	2235
	2%	2%	3%	5%	2%
grade 3 events	1150	1213	1417	3538	1167
	1%	1%	1%	1%	1%
grade 4 events	1032	1227	1479	3510	1097
	1%	1%	1%	1%	1%
grade 5 events	3336	3711	3182	4019	3699
	3%	4%	2%	2%	3%
grade 6 events	1858	2231	2050	3857	2041
	2%	2%	1%	2%	2%
grade 7 events	75379	75601	80373	83550	80628
	84%	82%	73%	45%	84%

2.2 Compared Parameters

Parameter	Planned	Actual	Parameter	Planned	Actual
Instrument	ACIS	ACIS	Obspar format version number	7	7
Detector	ACIS-01236	ACIS-01236	Obspar file type	PREDICTED	ACTUAL
Grating	NONE	NONE	Obspar update status	NONE	UPDATED
Data mode	VFAINT	VFAINT	Number of optional ACIS chips dropped	0	0
Observation mode	POINTING	POINTING	On-chip summing requested	N	N
[deg] Pointing RA	207.229092	207.1984133368408	Subarray requested	NONE	NONE
[deg] Pointing Dec	26.603990	26.6045770201058	Alternating exposures requested	N	N
[deg] Pointing Roll	148.343031	148.5654733692297	[s] Primary exposure time	0.000000	3.1
[mm] SIM focus pos	-0.782348	-0.7809083437167272			
[mm] SIM defocus	0	0.001439871863259334			
[mm] SIM translation stage pos	-214.092463	-214.0964622431356			
[mm] SIM translation stage offset	-19.5	-19.49599075979413			
[s] Observation start time (MET)	228626033.184000	228624960.22283			
Observation start date	2005-03-31T03:12:49	2005-03-31T02:56:00			
[s] Observation end time (MET)	228641033.184000	228641894.2486			
Observation end date	2005-03-31T07:22:49	2005-03-31T07:38:14			
Read mode	TIMED	TIMED			

2.3 Aspect

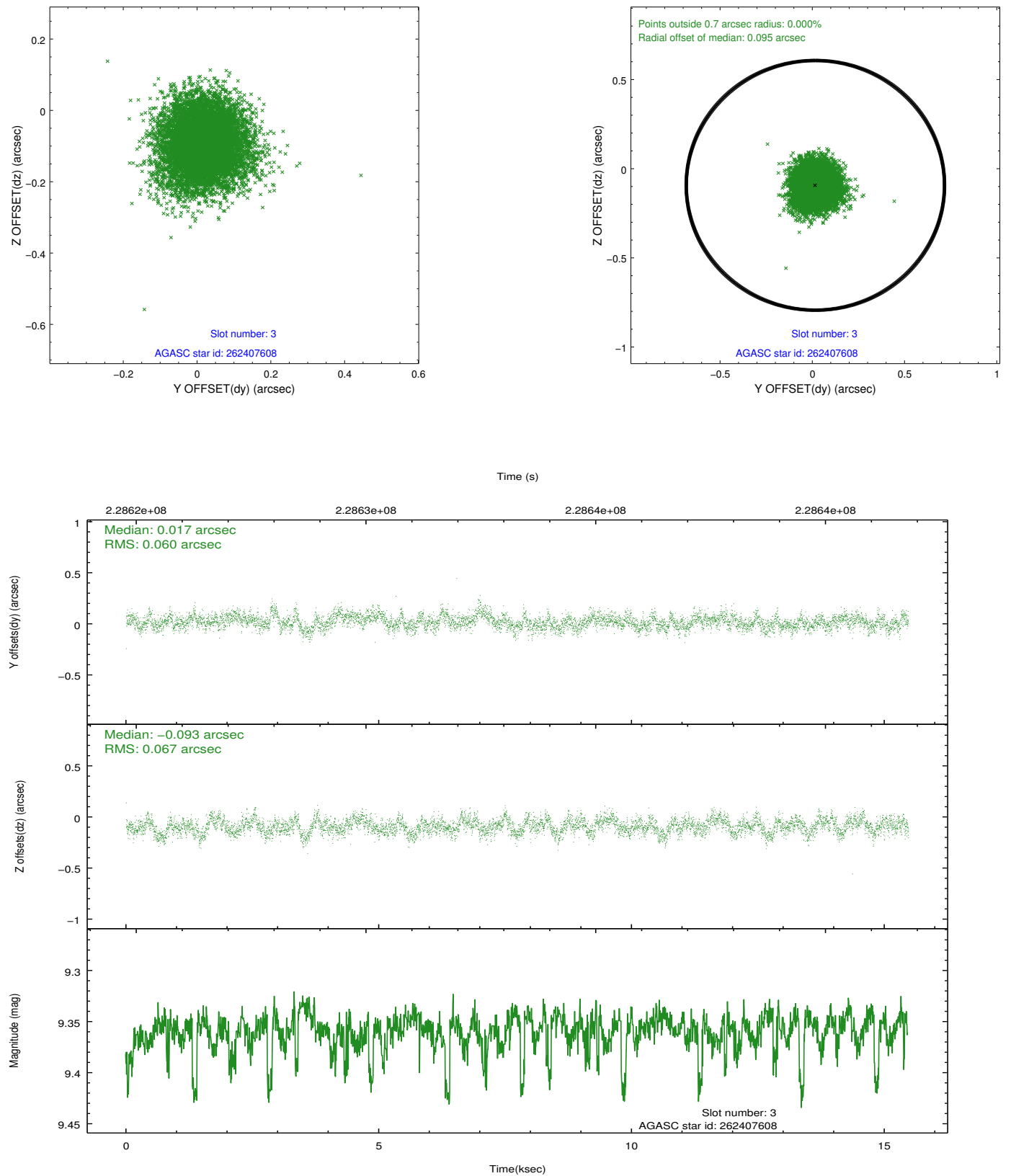


Slot Statistics

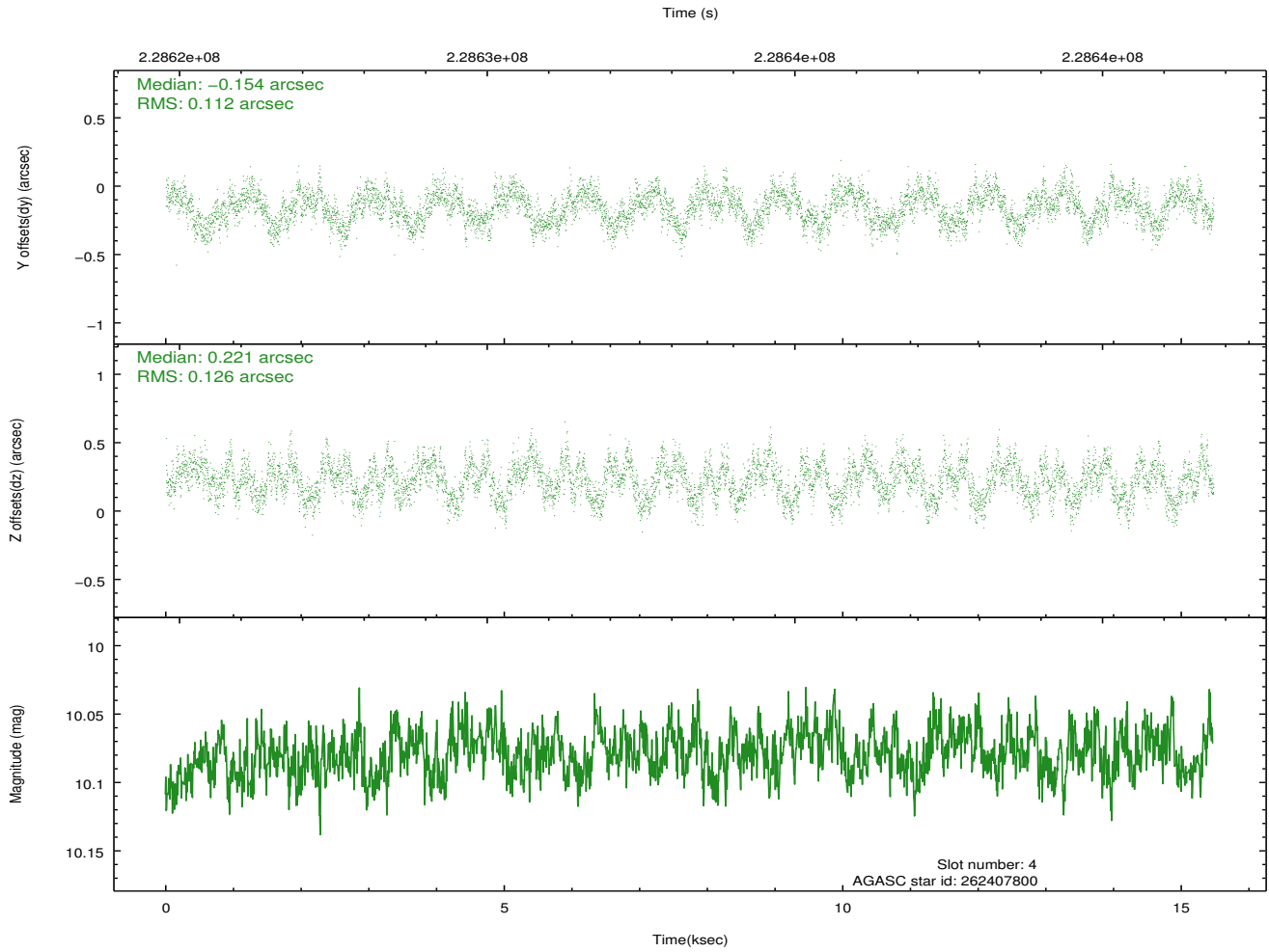
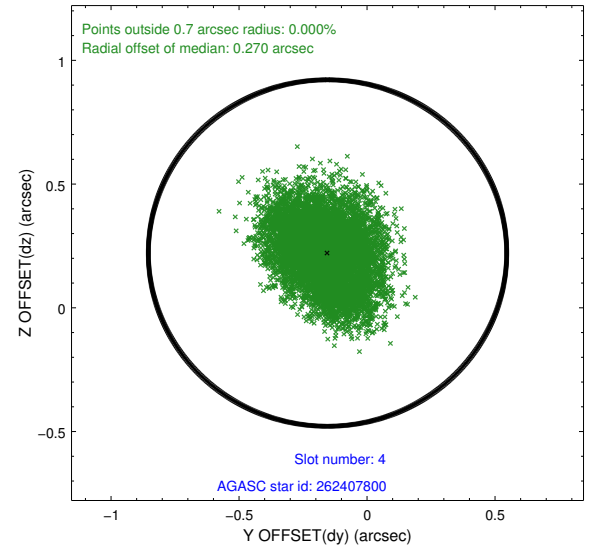
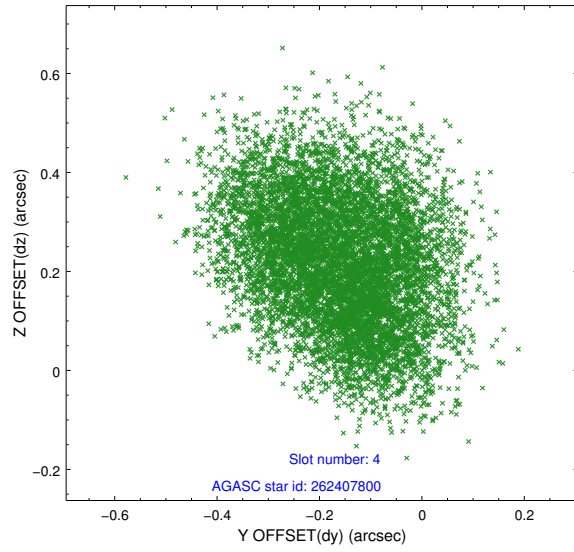
slot	status	id	mag	n_pts	med_dy	med_dz	dr1	dr2	ra	dec	mean_y	mean_z
0	FID	ACIS-I-1	7.21	3775	0.292	-0.236	0.006	0.011	0.000000	0.000000	935.74	-1233.49
1	FID	ACIS-I-5	7.22	3775	-0.439	0.213	0.006	0.010	0.000000	0.000000	-1812.85	664.32
2	FID	ACIS-I-6	7.27	3775	0.056	0.094	0.006	0.011	0.000000	0.000000	400.85	1308.94
3	GUIDE	262407608	9.36	7489	0.017	-0.093	0.096	0.154	207.378401	26.435507	-727.87	263.30
4	GUIDE	262407800	10.08	7538	-0.154	0.221	0.183	0.281	207.321181	27.251762	974.07	-2138.62
5	GUIDE	262408096	9.36	7546	0.023	-0.056	0.085	0.138	207.011678	26.515421	429.47	638.32
6	GUIDE	262408936	9.70	7541	0.067	0.031	0.150	0.240	207.154731	26.726554	435.29	-249.87
7	GUIDE	262411960	9.70	7538	0.049	-0.109	0.122	0.198	207.327895	25.881727	-1637.16	2044.90

2.4 Star Slots

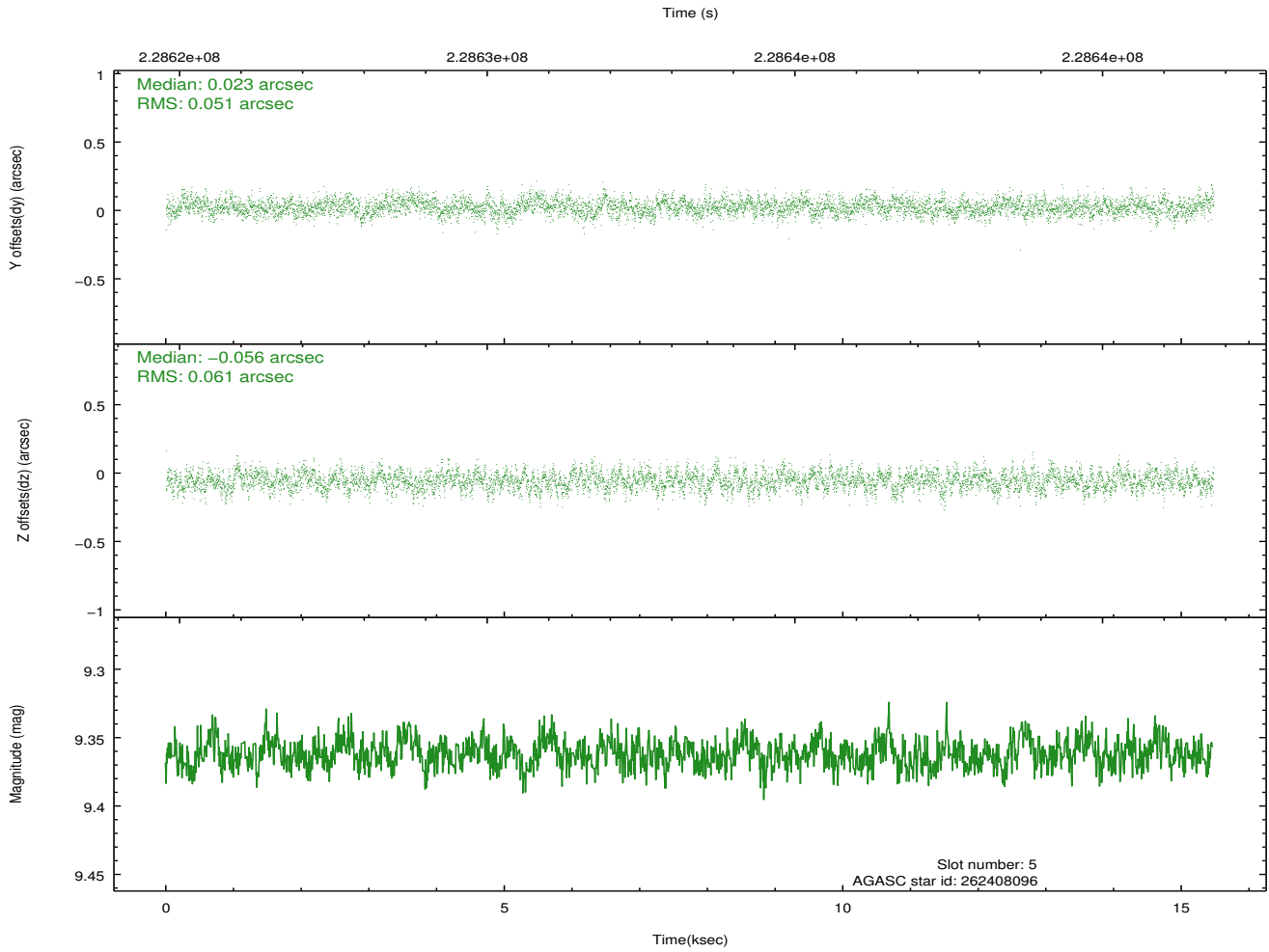
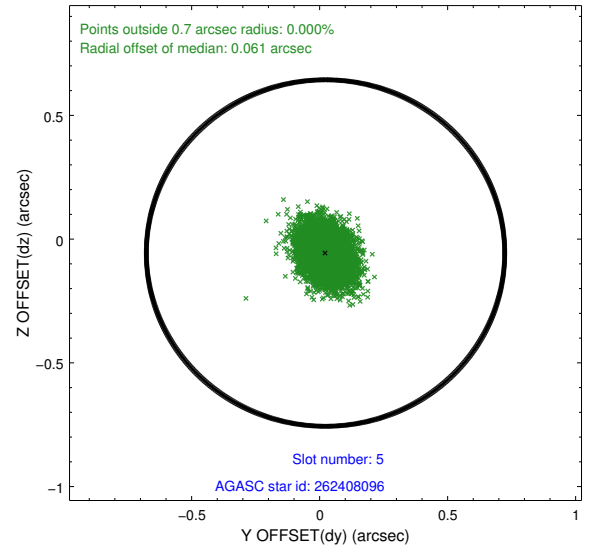
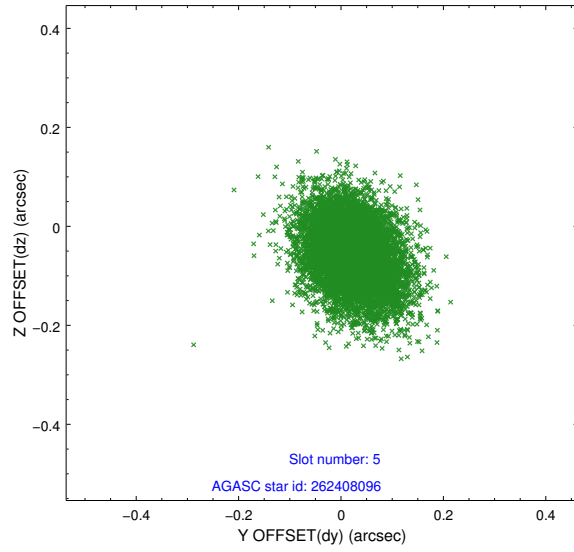
2.4.1 Slot 3



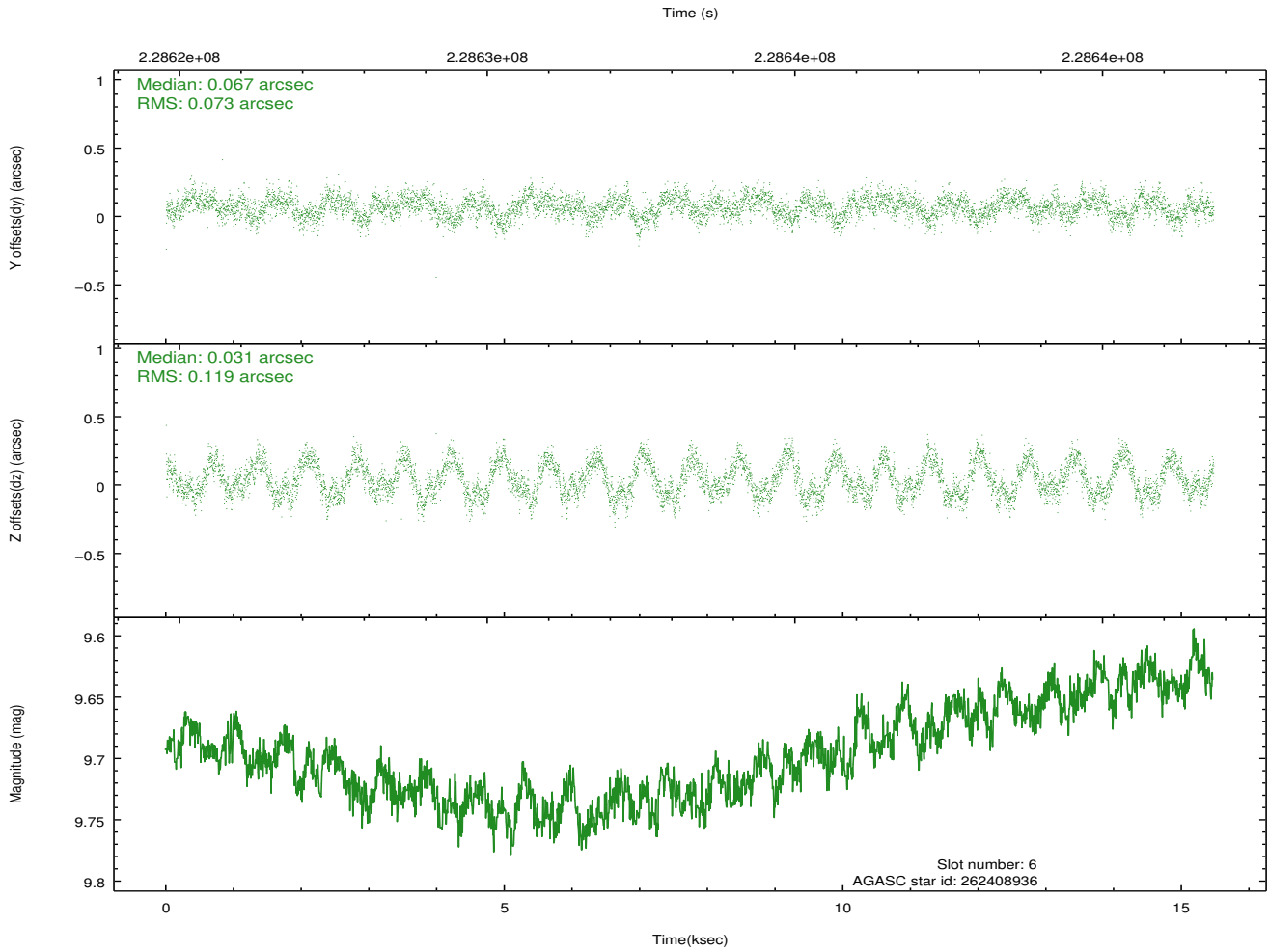
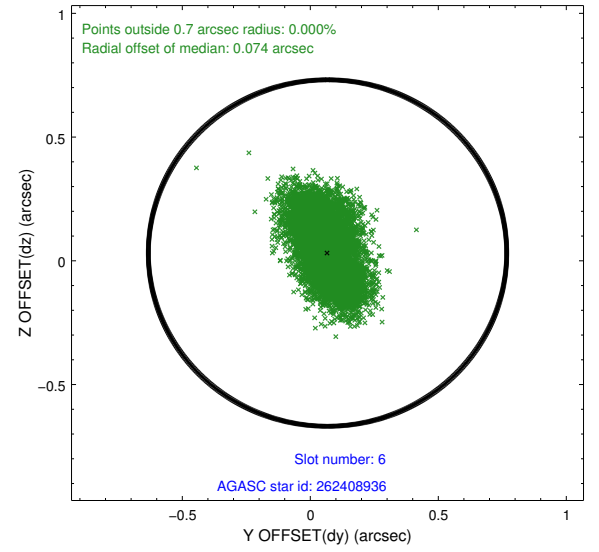
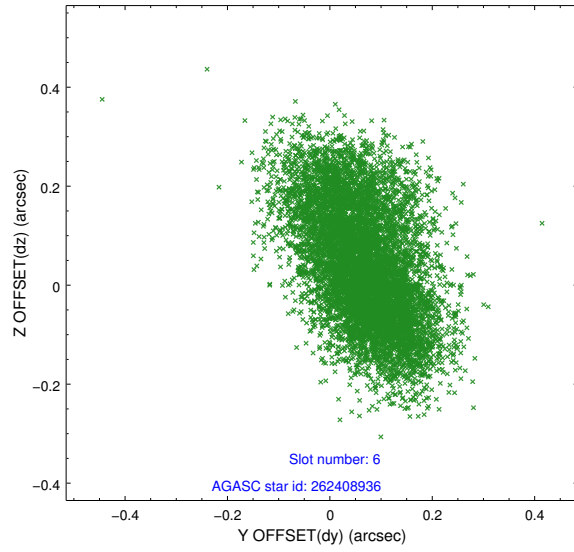
2.4.2 Slot 4



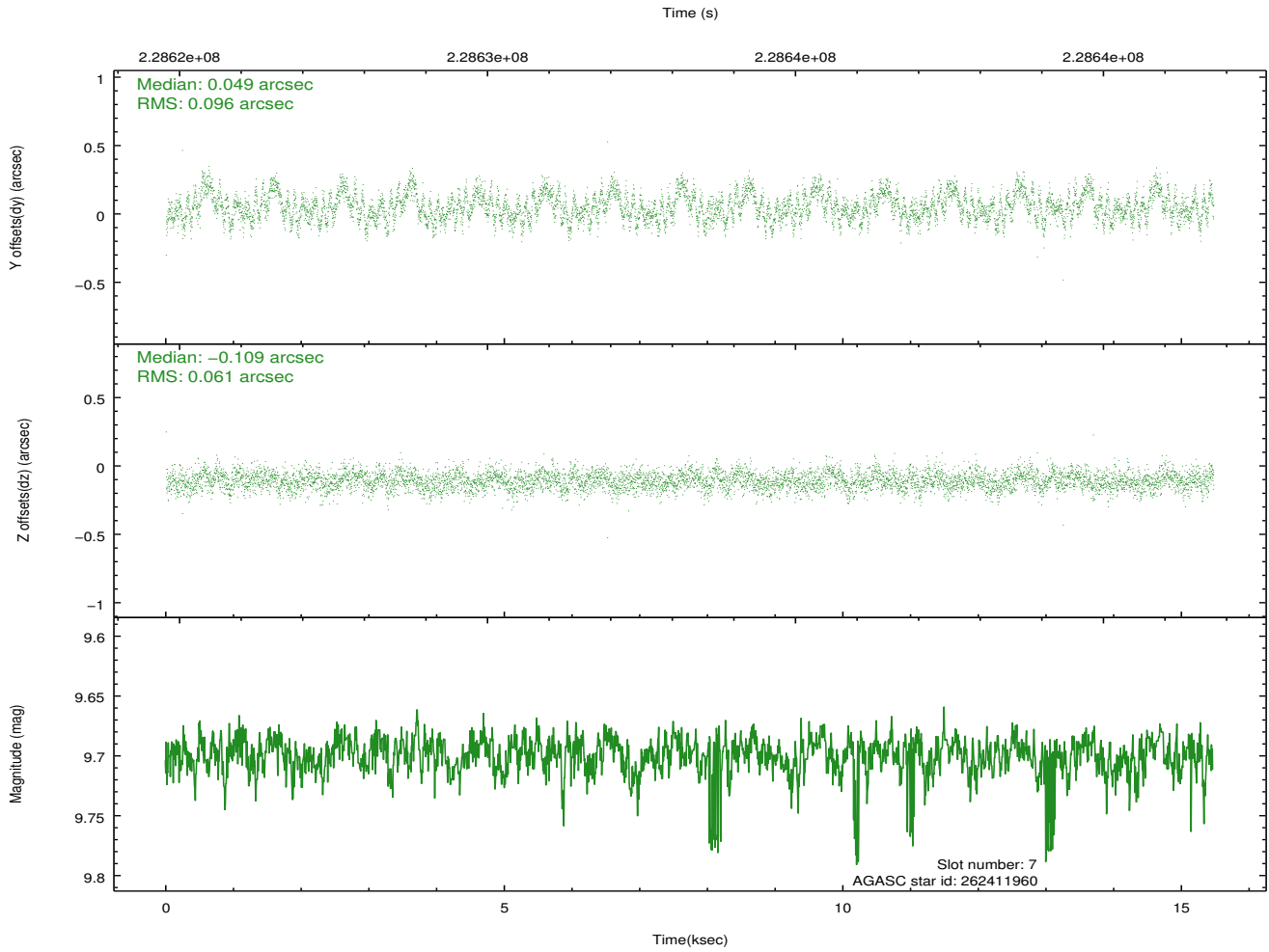
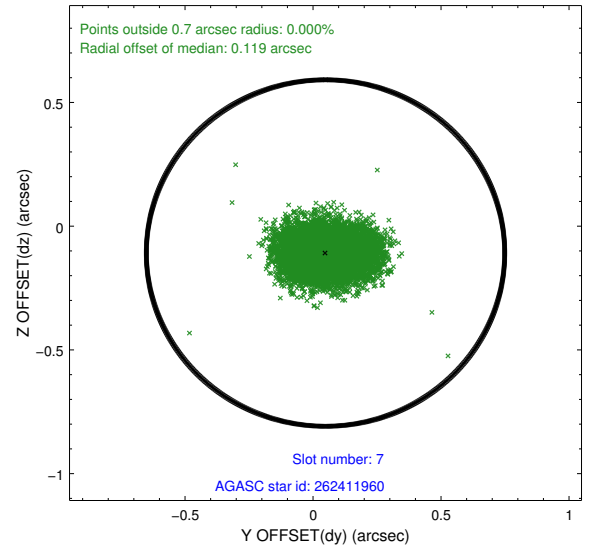
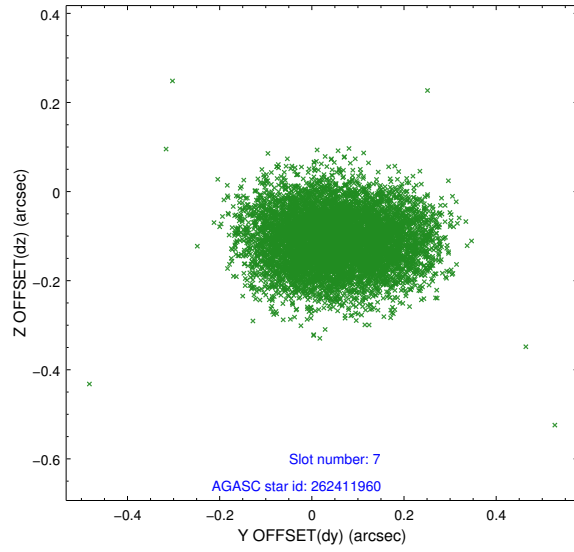
2.4.3 Slot 5



2.4.4 Slot 6

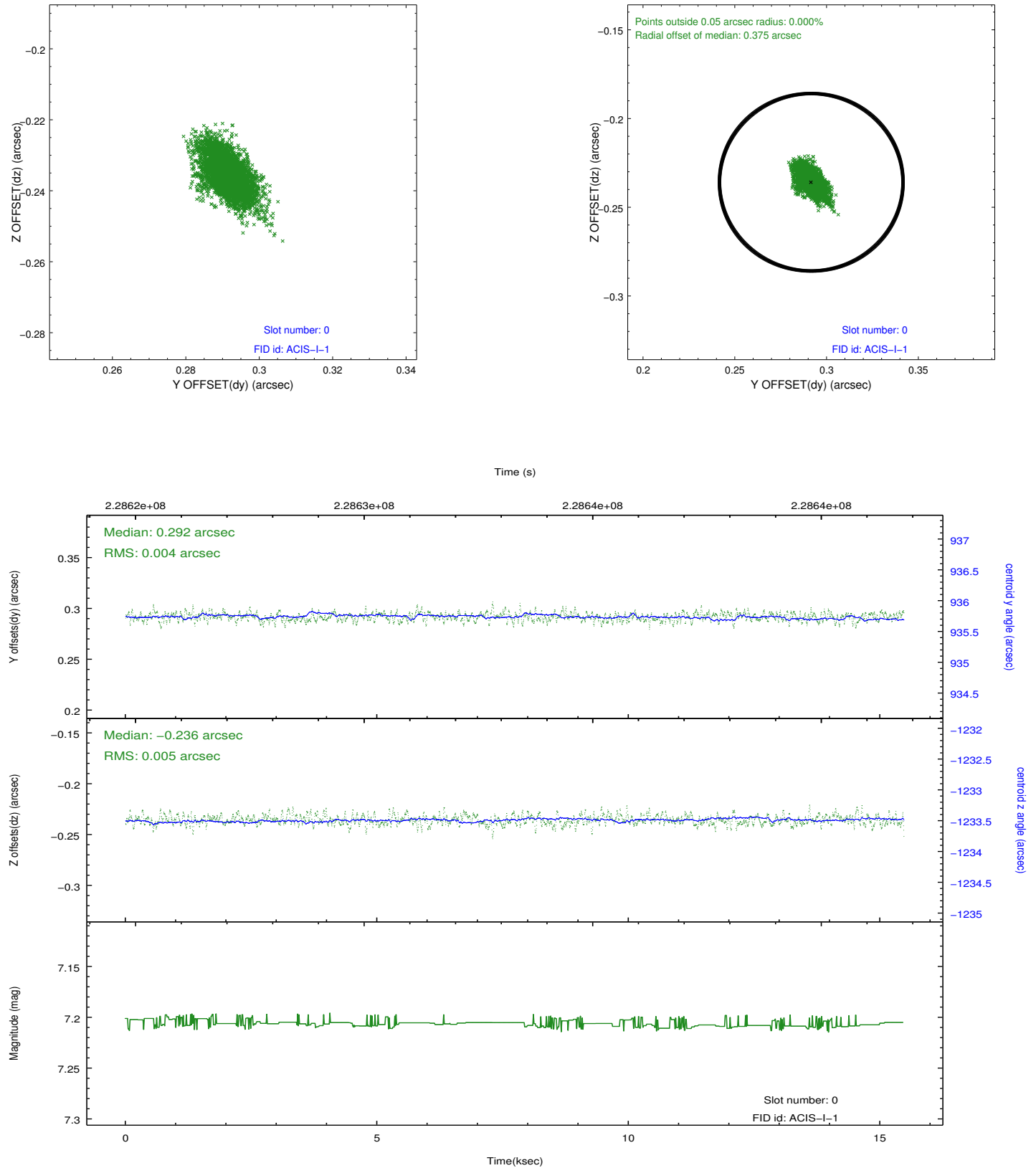


2.4.5 Slot 7

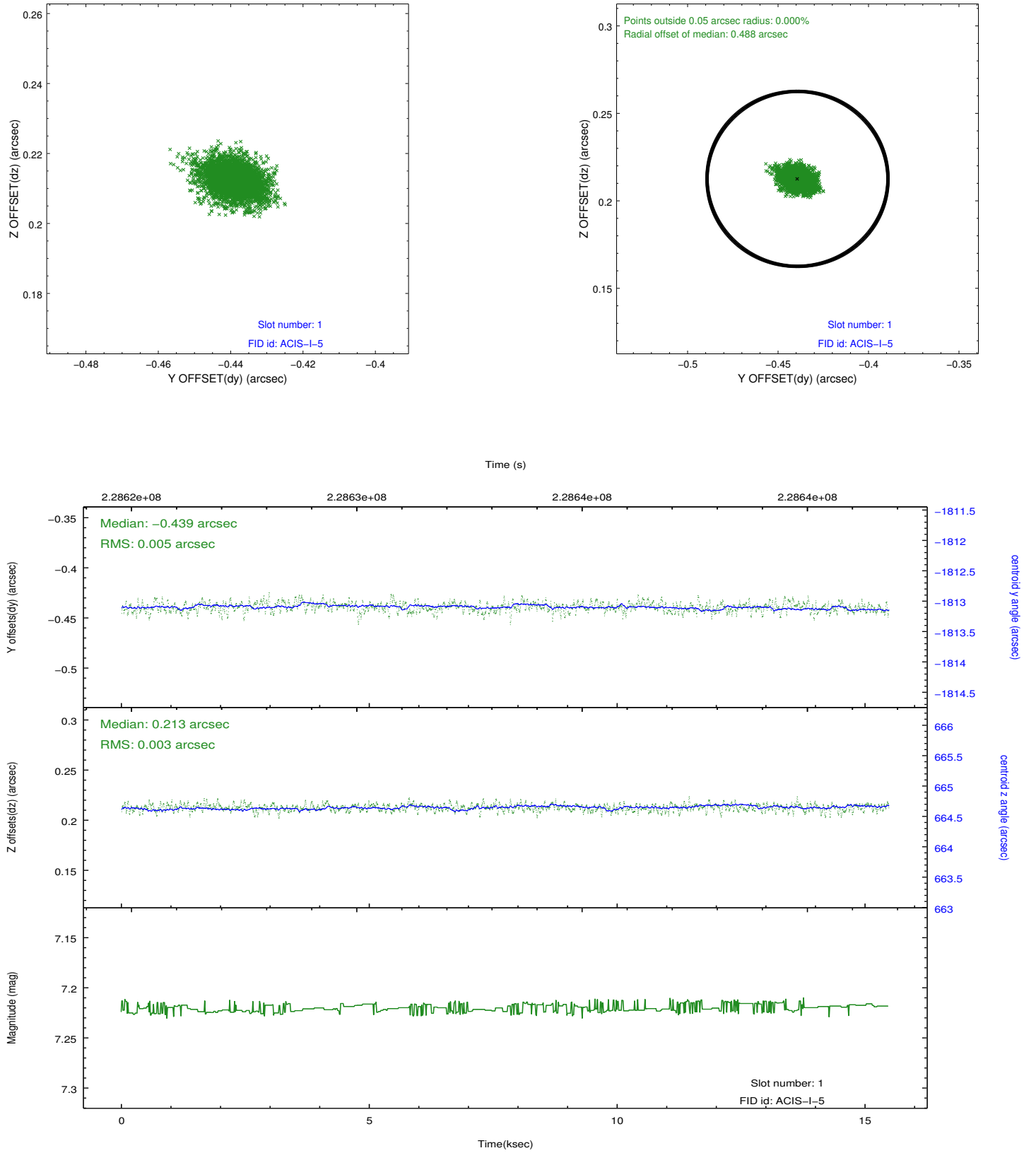


2.5 FID Slots

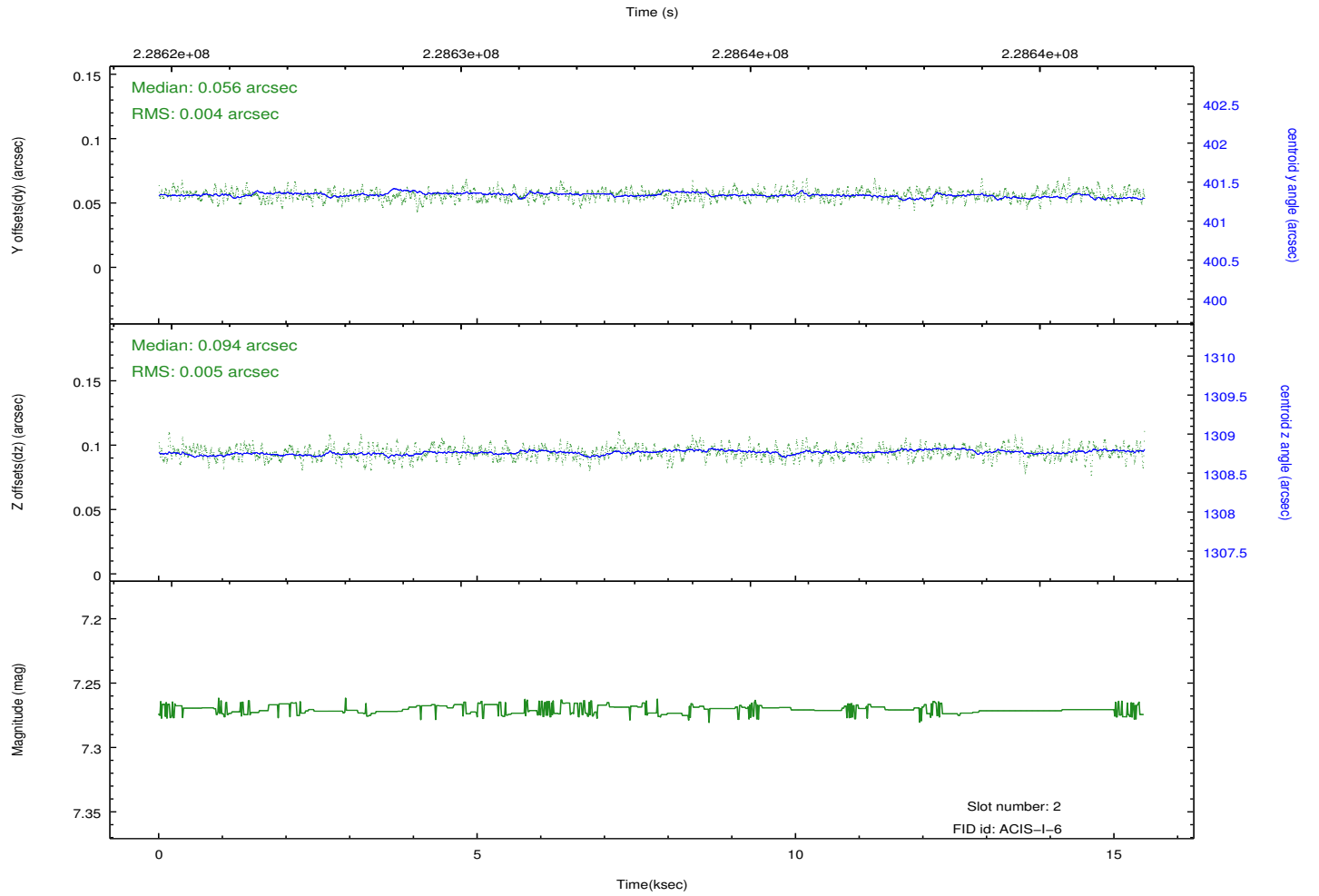
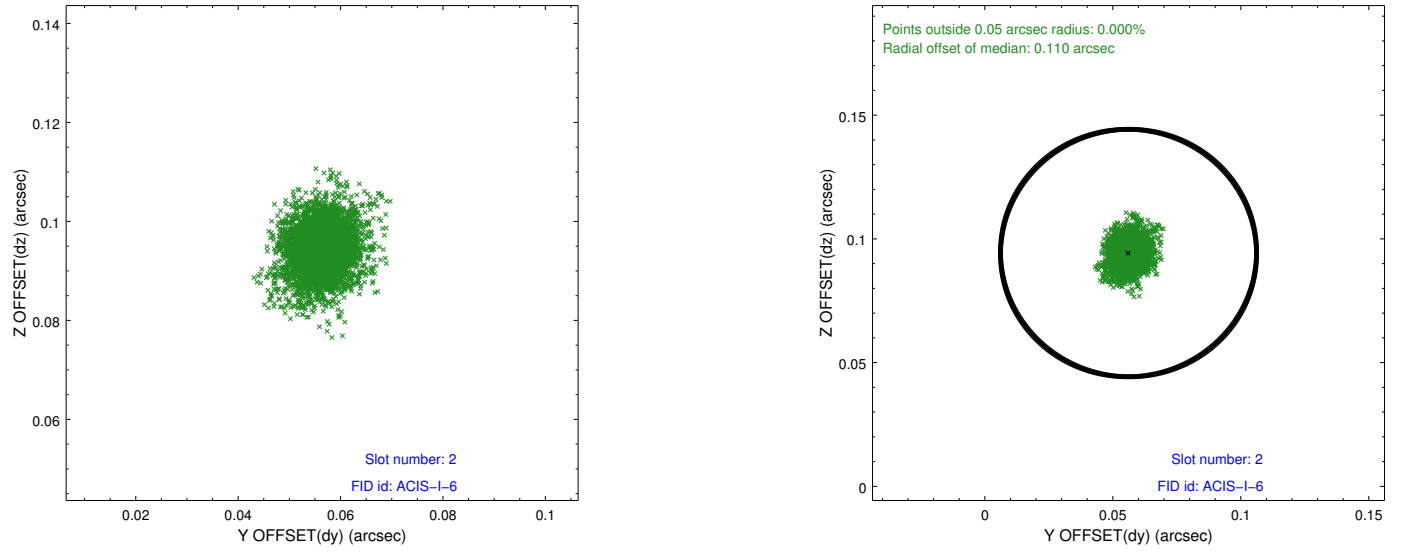
2.5.1 Slot 0



2.5.2 Slot 1



2.5.3 Slot 2



A Summary

A.1 Status

V&V Scientist	Beth Sundheim
V&V Date (YYYY-MM-DD)	2013.01.11
V&V Edition	1
V&V Disposition and Status	OK
V&V Charge Time	15.05049

A.2 Comments

Large SIM offsets are due to off-axis pointing.