

# V&V Reference Report

## L2 ASCDS Version : 7.6.9

Observation 61533 - L2 Version 001  
Chandra X-Ray Center

L2 Processing Date : Dec 16 2006

## Contents

<b>1</b>	<b>Front</b>	<b>2</b>
<b>2</b>	<b>OBI</b>	<b>3</b>
2.1	OBI . . . . .	3
2.1.1	Images . . . . .	3
2.1.2	Bias . . . . .	3
2.1.3	Parameters . . . . .	4
2.1.4	Events . . . . .	4
2.2	Compared Parameters . . . . .	5
2.3	Aspect . . . . .	6
2.4	Star Slots . . . . .	8
2.5	FID Slots . . . . .	8
<b>A</b>	<b>Summary</b>	<b>9</b>
A.1	Status . . . . .	9
A.2	Comments . . . . .	9

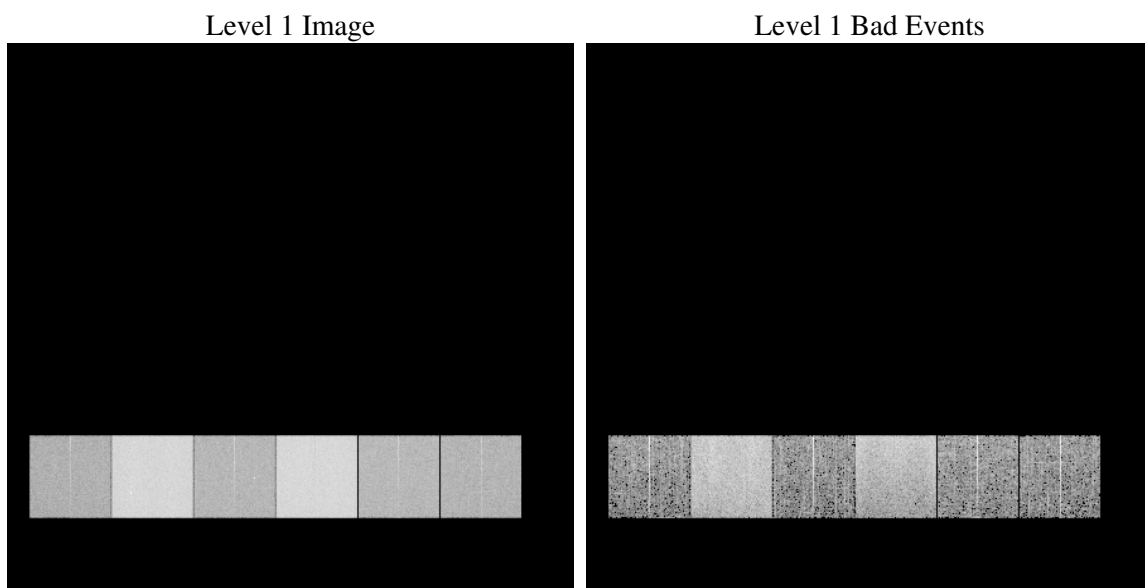
# 1 Front

seq_num	&#160
obs_id	61533
title	ACIS-456789 diagnostics
observer	CHANDRA engineering request/realtime commanding
object	&#160
dtcycle	0
cycle	P
ra_targ	0.0
dec_targ	0.0
ra_nom	350.97028306736
dec_nom	24.009147300467
roll_nom	128.69315283086
revision	2
ontime	6220.5815951824
livetime	6141.8128454397
ontime4	2253.7229572684
ontime5	6706.5762211233
ontime6	2503.2416177839
ontime7	6220.5815951824
ontime8	2593.7593639046
ontime9	2418.8517172635
l2events	1293386

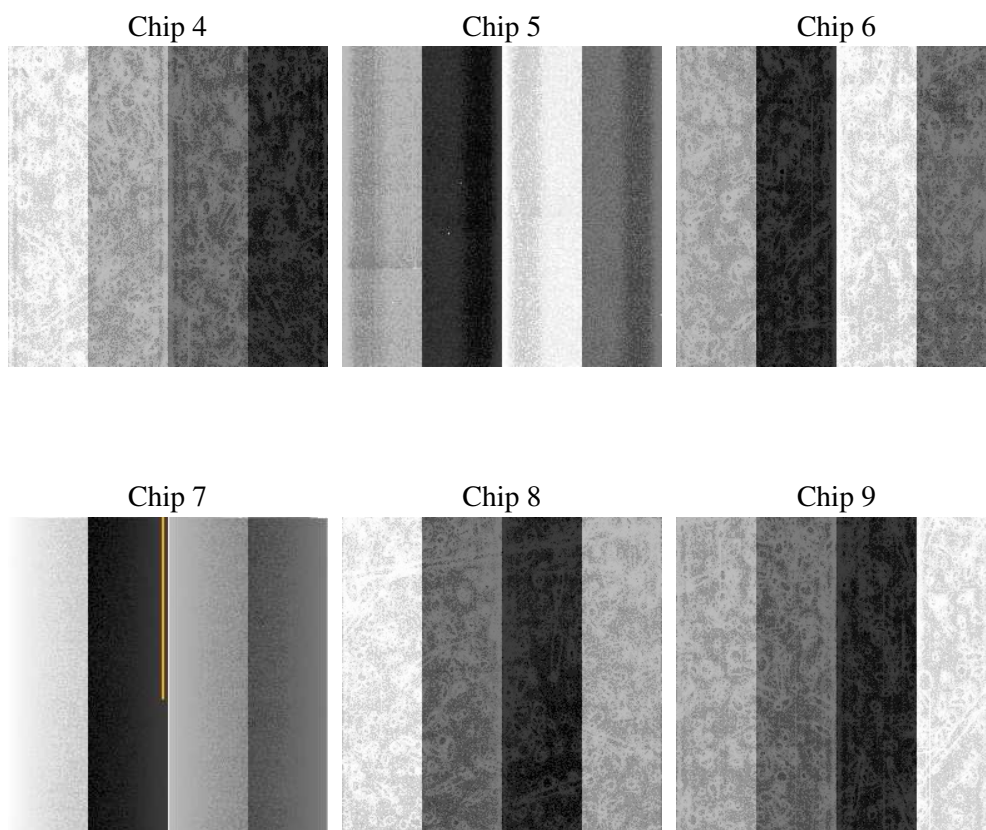
## 2 OBI

### 2.1 OBI

#### 2.1.1 Images



#### 2.1.2 Bias



### 2.1.3 Parameters

obi_num	0
ascdsver	7.6.9
caldsver	3.2.4
date	2006-12-16T04:40:33
revision	2

sched_exp_time	0.0
ontime	6222.7435884178
ontime4	2255.7618305087
ontime5	6708.8876376748
ontime6	2505.3215310276
ontime7	6222.7435884178
ontime8	2596.0707804561
ontime9	2421.0547505021
l1events	1548399

### 2.1.4 Events

	ccd 4	ccd 5	ccd 6	ccd 7	ccd 8	ccd 9
level 1 events	153615	420346	182315	431596	190703	169824
rejected events	21716	62856	21765	49300	23615	21193
rejected %	14%	14%	11%	11%	12%	12%

	ccd 4	ccd 5	ccd 6	ccd 7	ccd 8	ccd 9
grade 0 events	73129	38619	87312	69943	92327	81854
	47%	9%	47%	16%	48%	48%
grade 1 events	366	107	387	174	433	409
	0%	0%	0%	0%	0%	0%
grade 2 events	25043	173490	28478	115221	29706	26508
	16%	41%	15%	26%	15%	15%
grade 3 events	7831	11431	9784	28769	10257	9015
	5%	2%	5%	6%	5%	5%
grade 4 events	7780	11008	9613	28431	10521	9021
	5%	2%	5%	6%	5%	5%
grade 5 events	1352	7021	1512	6704	1725	1545
	0%	1%	0%	1%	0%	0%
grade 6 events	18303	123106	25571	140143	24477	22449
	11%	29%	14%	32%	12%	13%
grade 7 events	19811	55564	19658	42211	21257	19023
	12%	13%	10%	9%	11%	11%

## 2.2 Compared Parameters

Parameter	Planned	Actual	Parameter	Planned	Actual
Instrument	ACIS	ACIS	Obspar format version number	6	6
Detector	ACIS-456789	ACIS-456789	Obspar file type	PREDICTED	ACTUAL
Grating	NONE	NONE	Obspar update status	NONE	UPDATED
Data mode	FAINT	FAINT	On-chip summing requested	N	N
Observation mode	SECONDARY	SECONDARY	Subarray requested	NONE	NONE
Pointing RA	0	350.9702830673614	Alternating exposures requested	N	N
Pointing Dec	0	24.00914730046745	Primary exposure time	3.2	3.2
Pointing Roll	0.0	128.6931528308645			
SIM focus pos (mm)	-0.684267	-0.6828225247311905			
SIM defocus (mm)	0	0.8505141146731063			
SIM translation stage pos (mm)	-190.132523	250.466033080201			
SIM translation stage offset (mm)	0	-0.01005468664627074			
Observation start time	112198555.235587	112198554.46714			
Observation start date	2001-07-22T14:15:55	2001-07-22T14:15:54			
Observation end time	112219867.036427	112219866.26797			
Observation end date	2001-07-22T20:11:07	2001-07-22T20:11:06			
Read mode	TIMED	TIMED			

## 2.3 Aspect



## **2.4 Star Slots**

## **2.5 FID Slots**



# A Summary

## A.1 Status

V&V Scientist	Beth Sundheim
V&V Date (YYYY-MM-DD)	2006.12.17
V&V Edition	1
V&V Disposition and Status	OK
V&V Charge Time	6.22058159

## A.2 Comments

Focal plane temperature is warmer than -118.7 C degrees during the entire observation. This temperature is the upper limit of the verified ACIS calibration for the front-illuminated chips.