

V&V Reference Report

L2 ASCDS Version : 7.6.10

Observation 61363 - L2 Version 001
Chandra X-Ray Center

L2 Processing Date : Jan 17 2007

Contents

1	Front	2
2	OBI	3
2.1	OBI	3
2.1.1	Images	3
2.1.2	Bias	3
2.1.3	Parameters	4
2.1.4	Events	4
2.2	Compared Parameters	5
2.3	Star Slots	6
2.4	FID Slots	6
A	Summary	7
A.1	Status	7
A.2	Comments	7

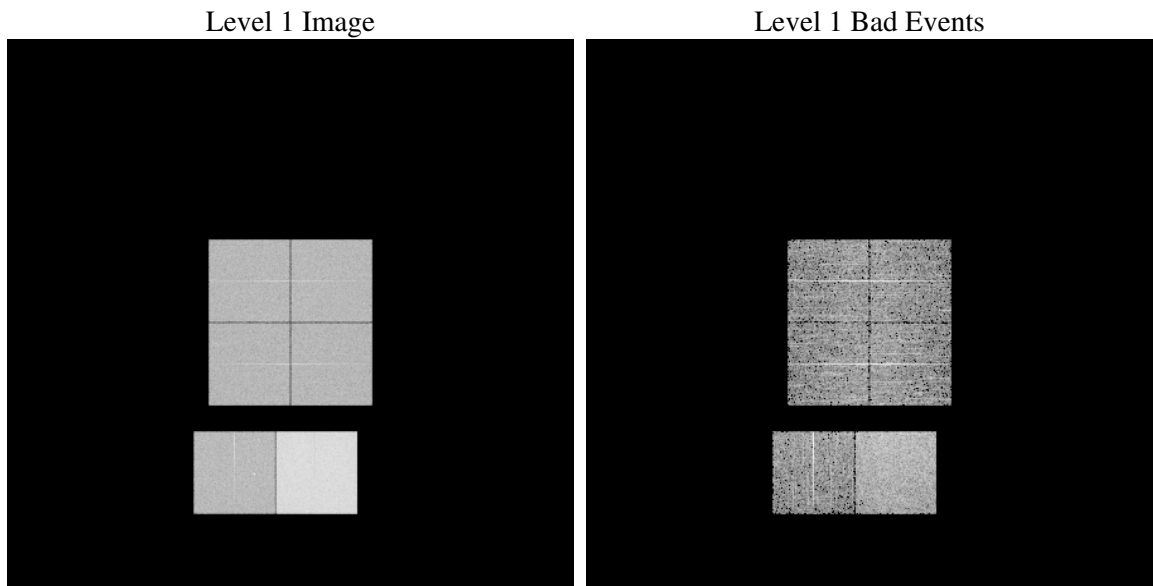
1 Front

seq_num	
obs_id	61363
title	ACIS-012367 diagnostics
observer	CHANDRA engineering request/realtime commanding
object	
dtcycle	0
cycle	P
ra_targ	0.0
dec_targ	0.0
ra_nom	352.02333427323
dec_nom	-11.51720006561
roll_nom	290.28390616826
revision	2
ontime	7486.2147169113
livetime	7391.4197585085
ontime0	3013.7097905427
ontime1	3042.9204598367
ontime2	2858.2231169343
ontime3	2832.1300292164
ontime6	3068.7910180092
ontime7	7486.2147169113
l2events	1221588

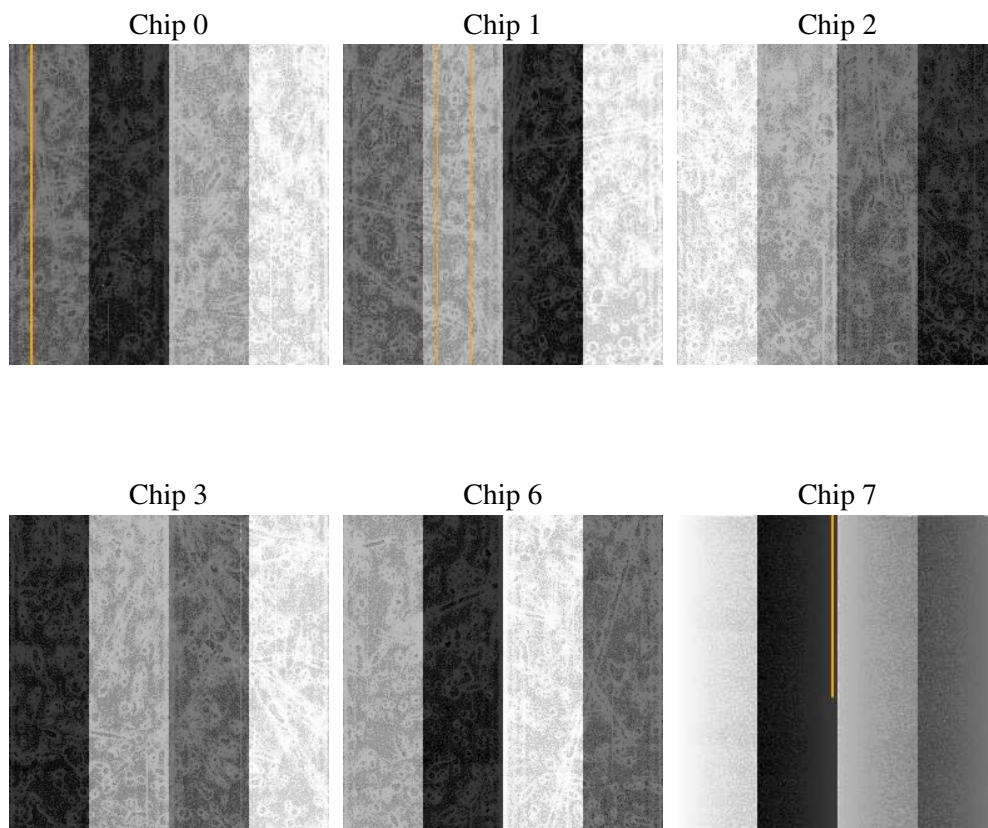
2 OBI

2.1 OBI

2.1.1 Images



2.1.2 Bias



2.1.3 Parameters

obi_num	1
ascdsver	7.6.10
caldbver	3.3.0
date	2007-01-17T05:52:31
revision	2

sched_exp_time	0.0
ontime	7486.2147169113
ontime0	3013.7097905427
ontime1	3042.9204598367
ontime2	2858.2231169343
ontime3	2832.1300292164
ontime6	3068.7910180092
ontime7	7486.2147169113
l1events	1421477

2.1.4 Events

	ccd 0	ccd 1	ccd 2	ccd 3	ccd 6	ccd 7
level 1 events	189027	191035	182386	182136	202374	474519
rejected events	21817	21156	21705	22560	22396	38632
rejected %	11%	11%	11%	12%	11%	8%

	ccd 0	ccd 1	ccd 2	ccd 3	ccd 6	ccd 7
grade 0 events	92043	93653	89288	88906	98061	111323
	48%	49%	48%	48%	48%	23%
grade 1 events	483	440	465	482	510	321
	0%	0%	0%	0%	0%	0%
grade 2 events	29557	29991	28336	27993	30883	96965
	15%	15%	15%	15%	15%	20%
grade 3 events	10625	10687	10302	10047	11032	44041
	5%	5%	5%	5%	5%	9%
grade 4 events	10587	10742	9974	10203	11211	44100
	5%	5%	5%	5%	5%	9%
grade 5 events	1569	1584	1429	1497	1624	7985
	0%	0%	0%	0%	0%	1%
grade 6 events	24398	24806	22781	22427	28791	139458
	12%	12%	12%	12%	14%	29%
grade 7 events	19765	19132	19811	20581	20262	30326
	10%	10%	10%	11%	10%	6%

2.2 Compared Parameters

Parameter	Planned	Actual	Parameter	Planned	Actual
Instrument	ACIS	ACIS	Obspar format version number	6	6
Detector	ACIS-012367	ACIS-012367	Obspar file type	PREDICTED	ACTUAL
Grating	NONE	NONE	Obspar update status	NONE	UPDATED
Data mode	FAINT	FAINT	On-chip summing requested	N	N
Observation mode	SECONDARY	SECONDARY	Subarray requested	NONE	NONE
Pointing RA	0	352.0233342732275	Alternating exposures requested	N	N
Pointing Dec	0	-11.51720006561041	Primary exposure time	0.000000	3.2
Pointing Roll	0.0	290.2839061682565			
SIM focus pos (mm)	-0.782348	-1.038866356238299			
SIM defocus (mm)	0	0.4944702831659975			
SIM translation stage pos (mm)	-233.592463	250.4635187648994			
SIM translation stage offset (mm)	0	-0.007540371344731511			
Observation start time	126335138.497	126335137.72855			
Observation start date	2002-01-02T05:05:38	2002-01-02T05:05:37			
Observation end time	126364621.598	126364620.82973			
Observation end date	2002-01-02T13:17:02	2002-01-02T13:17:00			
Read mode	TIMED	TIMED			

2.3 Star Slots

2.4 FID Slots

A Summary

A.1 Status

V&V Scientist	Jen Lauer
V&V Date (YYYY-MM-DD)	2007.01.17
V&V Edition	1
V&V Disposition and Status	OK
V&V Charge Time	7.48621471

A.2 Comments