

V&V Reference Report

L2 ASCDS Version : 7.6.8.1

Observation 61353 - L2 Version 001
Chandra X-Ray Center

L2 Processing Date : Aug 26 2006

Contents

1	Front	2
2	OBI	3
2.1	OBI	3
2.1.1	Images	3
2.1.2	Bias	3
2.1.3	Parameters	4
2.1.4	Events	4
2.2	Compared Parameters	5
2.3	Aspect	6
2.4	Star Slots	8
2.5	FID Slots	8
A	Summary	9
A.1	Status	9
A.2	Comments	9

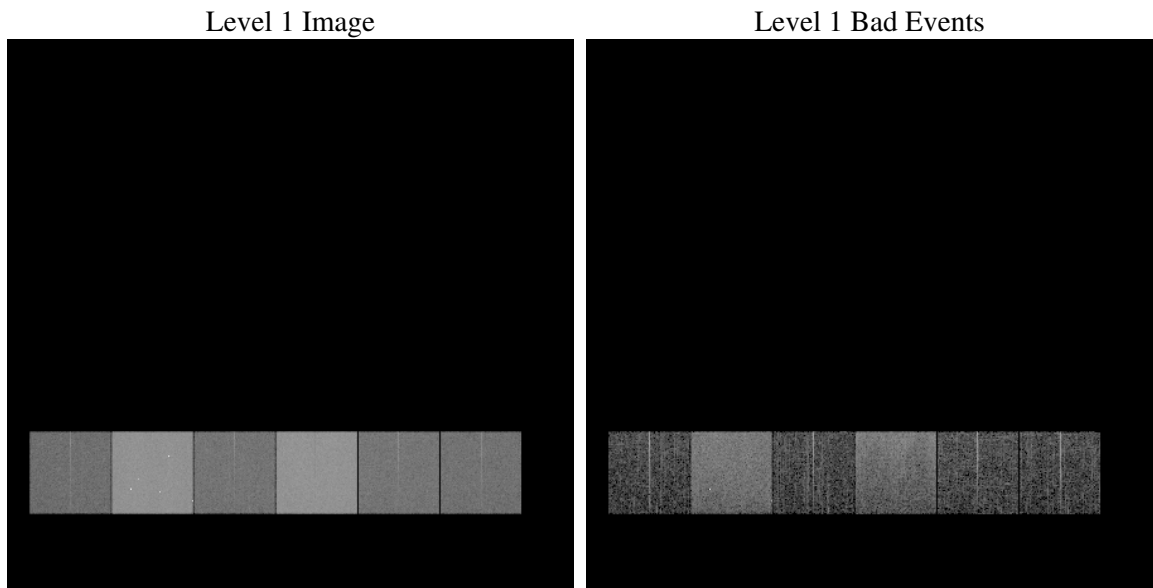
1 Front

seq_num	
obs_id	61353
title	ACIS-456789 diagnostics
observer	CHANDRA engineering request/realtime commanding
object	
dtcycle	0
cycle	P
ra_targ	0.0
dec_targ	0.0
ra_nom	300.05712163466
dec_nom	63.01212984853
roll_nom	352.27586140831
revision	2
ontime	6829.0246035457
livetime	6742.5513820706
ontime4	2551.0418138802
ontime5	7282.7998105139
ontime6	2787.5963146091
ontime7	6829.0246035457
ontime8	2871.9452947378
ontime9	2709.688543722
l2events	1286559

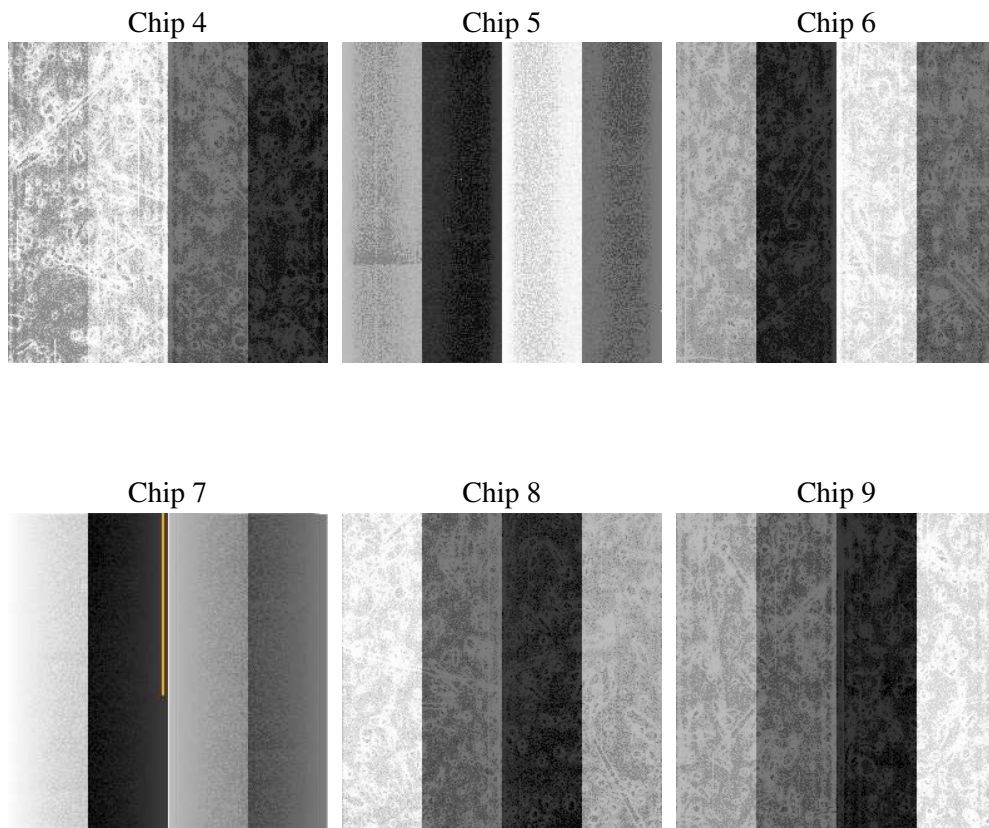
2 OBI

2.1 OBI

2.1.1 Images



2.1.2 Bias



2.1.3 Parameters

obi_num	0
ascdsver	7.6.8.1
caldsver	3.2.3
date	2006-08-26T16:53:17
revision	2

sched_exp_time	0.0
ontime	6832.0427715033
ontime4	2553.9368618429
ontime5	7285.7769384682
ontime6	2790.532402575
ontime7	6832.0427715033
ontime8	2874.7993026972
ontime9	2712.747751683
l1events	1543529

2.1.4 Events

	ccd 4	ccd 5	ccd 6	ccd 7	ccd 8	ccd 9
level 1 events	156681	417891	182652	425533	189584	171188
rejected events	20715	61249	21417	49577	23257	21205
rejected %	13%	14%	11%	11%	12%	12%

	ccd 4	ccd 5	ccd 6	ccd 7	ccd 8	ccd 9
grade 0 events	76783	46123	88240	70205	91698	82259
	49%	11%	48%	16%	48%	48%
grade 1 events	416	162	451	171	432	421
	0%	0%	0%	0%	0%	0%
grade 2 events	24197	169813	27925	112650	29219	26659
	15%	40%	15%	26%	15%	15%
grade 3 events	8357	12227	9888	28371	10458	9338
	5%	2%	5%	6%	5%	5%
grade 4 events	8338	12179	9960	28164	10497	9334
	5%	2%	5%	6%	5%	5%
grade 5 events	1366	6989	1558	6858	1785	1548
	0%	1%	0%	1%	0%	0%
grade 6 events	18455	116462	25400	136716	24641	22590
	11%	27%	13%	32%	12%	13%
grade 7 events	18769	53936	19230	42398	20854	19039
	11%	12%	10%	9%	10%	11%

2.2 Compared Parameters

Parameter	Planned	Actual	Parameter	Planned	Actual
Instrument	ACIS	ACIS	Obspar format version number	6	6
Detector	ACIS-456789	ACIS-456789	Obspar file type	PREDICTED	ACTUAL
Grating	NONE	NONE	Obspar update status	NONE	UPDATED
Data mode	FAINT	FAINT	On-chip summing requested	N	N
Observation mode	SECONDARY	SECONDARY	Subarray requested	NONE	NONE
Pointing RA	0	300.0571216346613	Alternating exposures requested	N	N
Pointing Dec	0	63.01212984853046	Primary exposure time	0.000000	3.2
Pointing Roll	0.0	352.2758614083111			
SIM focus pos (mm)	-0.684267	-0.6828225247311905			
SIM defocus (mm)	0	0.8505141146731063			
SIM translation stage pos (mm)	-190.132523	250.466033080201			
SIM translation stage offset (mm)	0	-0.01005468664627074			
Observation start time	127050094.476	127050093.70729			
Observation start date	2002-01-10T11:41:34	2002-01-10T11:41:33			
Observation end time	127071406.277	127071405.50814			
Observation end date	2002-01-10T17:36:46	2002-01-10T17:36:45			
Read mode	TIMED	TIMED			

2.3 Aspect

2.4 Star Slots

2.5 FID Slots

A Summary

A.1 Status

V&V Scientist	Jen Lauer
V&V Date (YYYY-MM-DD)	2006.08.28
V&V Edition	1
V&V Disposition and Status	OK
V&V Charge Time	6.8290246

A.2 Comments