

V&V Reference Report

L2 ASCDS Version : 7.6.8.1

Observation 61333 - L2 Version 001
Chandra X-Ray Center

L2 Processing Date : Aug 29 2006

Contents

1	Front	2
2	OBI	3
2.1	OBI	3
2.1.1	Images	3
2.1.2	Bias	3
2.1.3	Parameters	4
2.1.4	Events	4
2.2	Compared Parameters	5
2.3	Aspect	6
2.4	Star Slots	8
2.5	FID Slots	8
A	Summary	9
A.1	Status	9
A.2	Comments	9

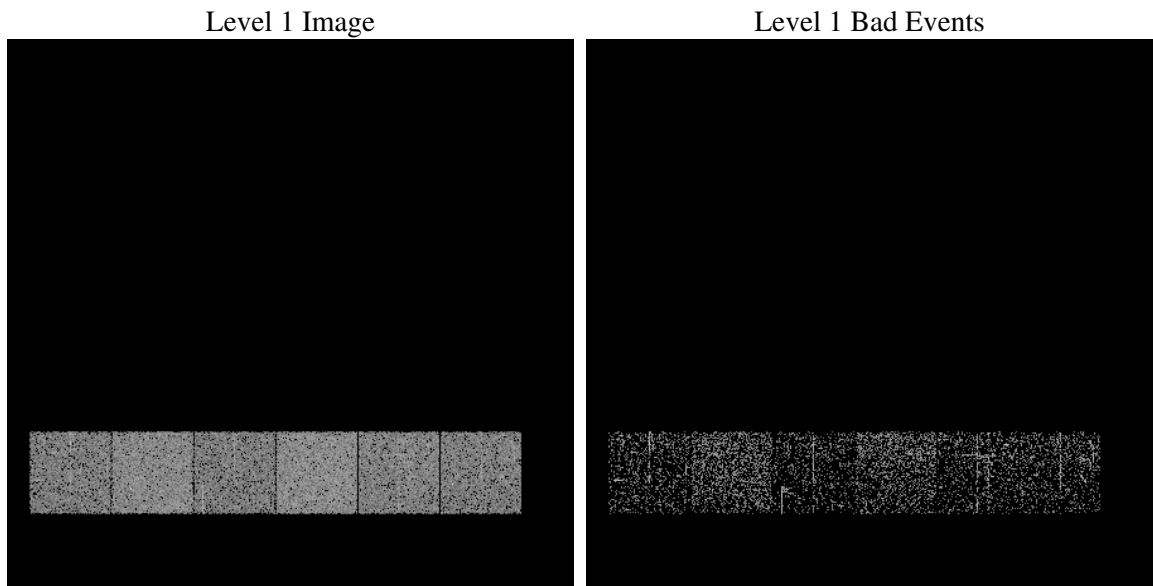
1 Front

seq_num	
obs_id	61333
title	ACIS-456789 diagnostics
observer	CHANDRA engineering request/realtime commanding
object	
dtcycle	0
cycle	P
ra_targ	0.0
dec_targ	0.0
ra_nom	96.023710069266
dec_nom	5.9842906082968
roll_nom	292.87704119394
revision	2
ontime	260.82955102623
livetime	257.52677019843
ontime4	183.16863788664
ontime5	264.11158120632
ontime6	176.64558763802
ontime7	260.82955102623
ontime8	189.69165821373
ontime9	183.00447788835
l2events	63668

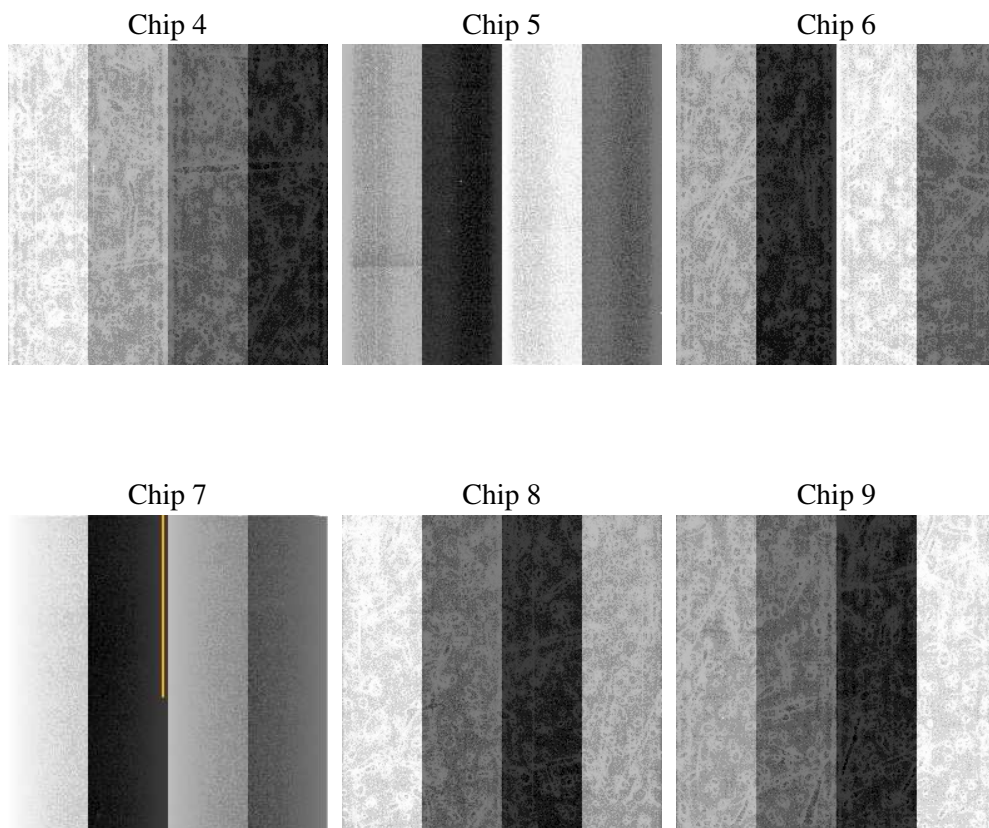
2 OBI

2.1 OBI

2.1.1 Images



2.1.2 Bias



2.1.3 Parameters

obi_num	0
ascdsver	7.6.8.1
caldbver	3.2.3
date	2006-08-30T00:11:57
revision	2

sched_exp_time	0.0
ontime	262.52117039263
ontime4	184.73713725805
ontime5	265.76216056943
ontime6	178.25512701273
ontime7	262.52117039263
ontime8	191.21911758184
ontime9	184.73713725805
l1events	77186

2.1.4 Events

	ccd 4	ccd 5	ccd 6	ccd 7	ccd 8	ccd 9
level 1 events	11159	15075	11131	16075	12457	11289
rejected events	1422	2293	1252	1990	1491	1454
rejected %	12%	15%	11%	12%	11%	12%

	ccd 4	ccd 5	ccd 6	ccd 7	ccd 8	ccd 9
grade 0 events	5473	1663	5412	2825	5883	5497
	49%	11%	48%	17%	47%	48%
grade 1 events	21	45	28	3	33	18
	0%	0%	0%	0%	0%	0%
grade 2 events	1752	6140	1717	4332	1978	1781
	15%	40%	15%	26%	15%	15%
grade 3 events	607	486	572	1110	735	597
	5%	3%	5%	6%	5%	5%
grade 4 events	567	500	612	1054	705	577
	5%	3%	5%	6%	5%	5%
grade 5 events	84	255	87	247	114	106
	0%	1%	0%	1%	0%	0%
grade 6 events	1338	4153	1566	4945	1665	1565
	11%	27%	14%	30%	13%	13%
grade 7 events	1317	1833	1137	1559	1344	1148
	11%	12%	10%	9%	10%	10%

2.2 Compared Parameters

Parameter	Planned	Actual	Parameter	Planned	Actual
Instrument	ACIS	ACIS	Obspar format version number	6	6
Detector	ACIS-456789	ACIS-456789	Obspar file type	PREDICTED	ACTUAL
Grating	NONE	NONE	Obspar update status	NONE	UPDATED
Data mode	FAINT	FAINT	On-chip summing requested	N	N
Observation mode	SECONDARY	SECONDARY	Subarray requested	NONE	NONE
Pointing RA	0	96.02371006926582	Alternating exposures requested	N	N
Pointing Dec	0	5.984290608296847	Primary exposure time	3.2	3.2
Pointing Roll	0.0	292.8770411939388			
SIM focus pos (mm)	-0.684267	-0.6828225247311905			
SIM defocus (mm)	0	0.8505141146731063			
SIM translation stage pos (mm)	-190.132523	250.466033080201			
SIM translation stage offset (mm)	0	-0.01005468664627074			
Observation start time	128613609.038691	128613608.27022			
Observation start date	2002-01-28T14:00:09	2002-01-28T14:00:08			
Observation end time	128616643.038813	128616642.27035			
Observation end date	2002-01-28T14:50:43	2002-01-28T14:50:42			
Read mode	TIMED	TIMED			

2.3 Aspect

2.4 Star Slots

2.5 FID Slots

A Summary

A.1 Status

V&V Scientist	Jen Lauer
V&V Date (YYYY-MM-DD)	2006.08.30
V&V Edition	1
V&V Disposition and Status	OK
V&V Charge Time	0.26082955

A.2 Comments