

V&V Reference Report

L2 ASCDS Version : 7.6.9

Observation 61213 - L2 Version 001
Chandra X-Ray Center

L2 Processing Date : Sep 15 2006

Contents

| | | |
|----------|-------------------------------|----------|
| 1 | Front | 2 |
| 2 | OBI | 3 |
| 2.1 | OBI | 3 |
| 2.1.1 | Images | 3 |
| 2.1.2 | Bias | 3 |
| 2.1.3 | Parameters | 4 |
| 2.1.4 | Events | 4 |
| 2.2 | Compared Parameters | 5 |
| 2.3 | Aspect | 6 |
| 2.4 | Star Slots | 8 |
| 2.5 | FID Slots | 8 |
| A | Summary | 9 |
| A.1 | Status | 9 |
| A.2 | Comments | 9 |

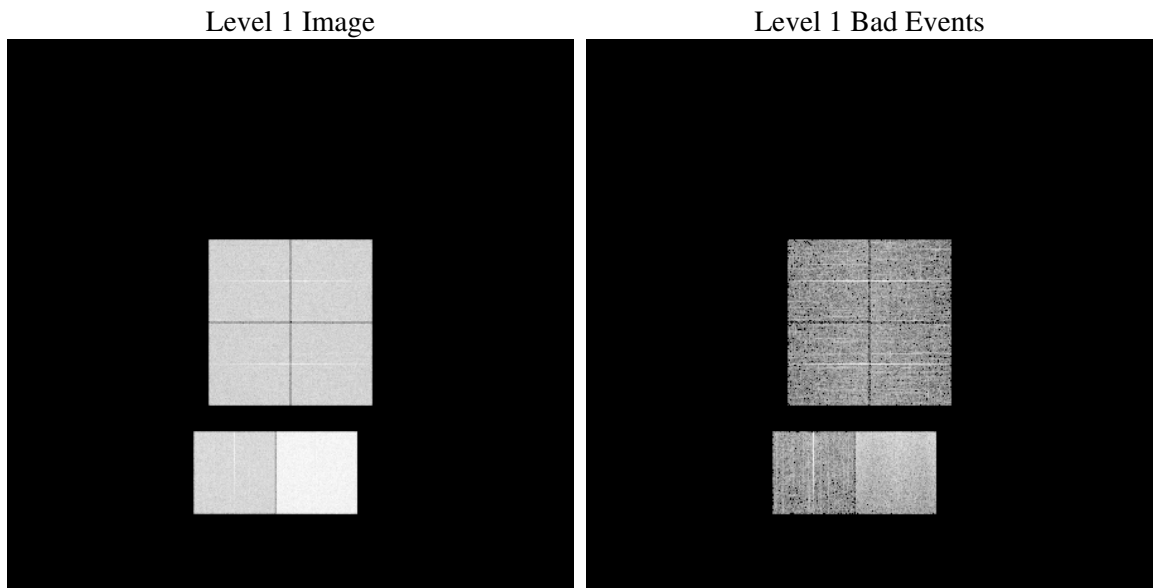
1 Front

| | |
|----------|---|
| seq_num | |
| obs_id | 61213 |
| title | ACIS-012367 diagnostics |
| observer | CHANDRA engineering request/realtime commanding |
| object | |
| dtcycle | 0 |
| cycle | P |
| ra_targ | 0.0 |
| dec_targ | 0.0 |
| ra_nom | 281.98085425201 |
| dec_nom | -21.977451254082 |
| roll_nom | 95.46537808561 |
| revision | 2 |
| ontime | 7791.332980901 |
| livetime | 7692.6744313193 |
| ontime0 | 3309.1036779881 |
| ontime1 | 3357.7590220571 |
| ontime2 | 3192.5088463426 |
| ontime3 | 3231.2370765507 |
| ontime6 | 3562.0262527168 |
| ontime7 | 7791.332980901 |
| l2events | 1206797 |

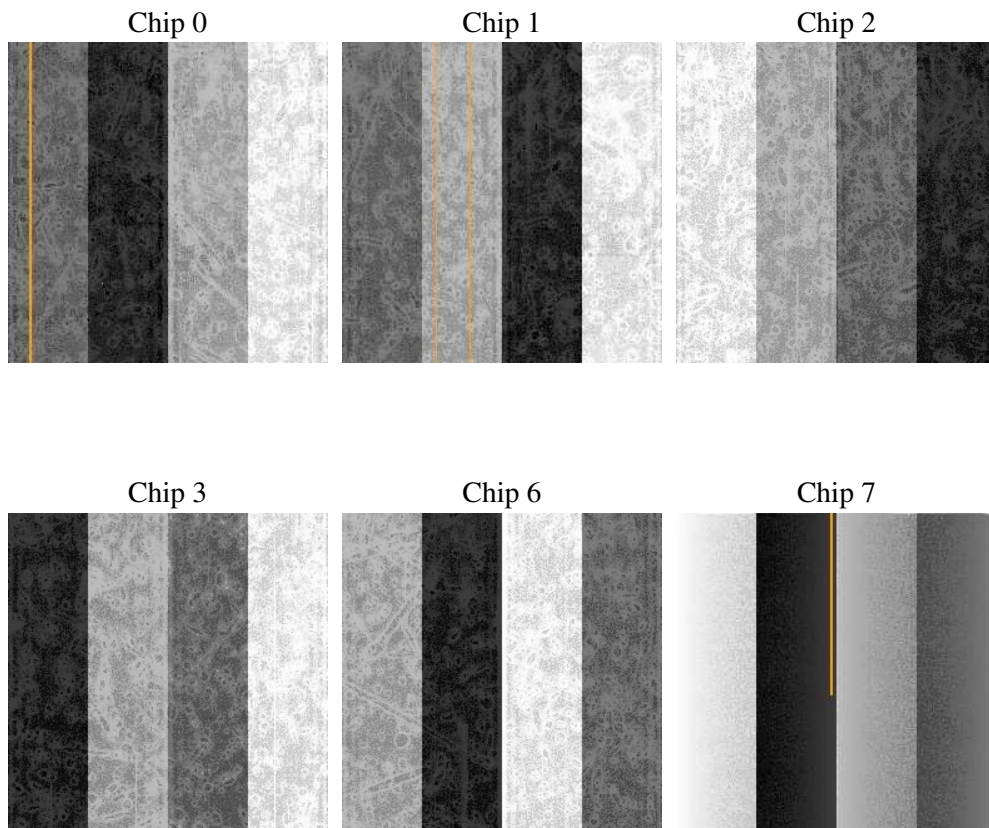
2 OBI

2.1 OBI

2.1.1 Images



2.1.2 Bias



2.1.3 Parameters

| | |
|----------|---------------------|
| obi_num | 0 |
| ascdsver | 7.6.9 |
| caldbver | 3.2.3 |
| date | 2006-09-15T06:41:29 |
| revision | 2 |

| | |
|----------------|-----------------|
| sched_exp_time | 0.0 |
| ontime | 7794.6067176163 |
| ontime0 | 3312.3363747001 |
| ontime1 | 3360.9506787658 |
| ontime2 | 3195.659463048 |
| ontime3 | 3234.5518532693 |
| ontime6 | 3565.1358294487 |
| ontime7 | 7794.6067176163 |
| l1events | 1439889 |

2.1.4 Events

| | ccd 0 | ccd 1 | ccd 2 | ccd 3 | ccd 6 | ccd 7 |
|-----------------|--------|--------|--------|--------|--------|--------|
| level 1 events | 191612 | 193937 | 188849 | 191207 | 217854 | 456430 |
| rejected events | 24351 | 23702 | 24685 | 25213 | 27357 | 56103 |
| rejected % | 12% | 12% | 13% | 13% | 12% | 12% |

| | ccd 0 | ccd 1 | ccd 2 | ccd 3 | ccd 6 | ccd 7 |
|----------------|-------|-------|-------|-------|--------|--------|
| grade 0 events | 91917 | 93647 | 91154 | 93006 | 103714 | 75233 |
| | 47% | 48% | 48% | 48% | 47% | 16% |
| grade 1 events | 462 | 475 | 463 | 478 | 475 | 181 |
| | 0% | 0% | 0% | 0% | 0% | 0% |
| grade 2 events | 29909 | 30005 | 29060 | 29066 | 33032 | 118793 |
| | 15% | 15% | 15% | 15% | 15% | 26% |
| grade 3 events | 10448 | 10884 | 10285 | 10419 | 12027 | 30658 |
| | 5% | 5% | 5% | 5% | 5% | 6% |
| grade 4 events | 10611 | 10873 | 10528 | 10616 | 11863 | 30021 |
| | 5% | 5% | 5% | 5% | 5% | 6% |
| grade 5 events | 1654 | 1664 | 1561 | 1672 | 2014 | 7650 |
| | 0% | 0% | 0% | 0% | 0% | 1% |
| grade 6 events | 24541 | 25000 | 23290 | 23067 | 30039 | 145803 |
| | 12% | 12% | 12% | 12% | 13% | 31% |
| grade 7 events | 22070 | 21389 | 22508 | 22883 | 24690 | 48091 |
| | 11% | 11% | 11% | 11% | 11% | 10% |

2.2 Compared Parameters

| Parameter | Planned | Actual | Parameter | Planned | Actual |
|-----------------------------------|---------------------|----------------------|---------------------------------|-----------|---------|
| Instrument | ACIS | ACIS | Obspar format version number | 6 | 6 |
| Detector | ACIS-012367 | ACIS-012367 | Obspar file type | PREDICTED | ACTUAL |
| Grating | NONE | NONE | Obspar update status | NONE | UPDATED |
| Data mode | FAINT | FAINT | On-chip summing requested | N | N |
| Observation mode | SECONDARY | SECONDARY | Subarray requested | NONE | NONE |
| Pointing RA | 0 | 281.9808542520101 | Alternating exposures requested | N | N |
| Pointing Dec | 0 | -21.97745125408193 | Primary exposure time | 3.2 | 3.2 |
| Pointing Roll | 0.0 | 95.46537808561028 | | | |
| SIM focus pos (mm) | -0.782348 | -0.6828225247311905 | | | |
| SIM defocus (mm) | 0 | 0.8505141146731063 | | | |
| SIM translation stage pos (mm) | -233.592463 | 250.466033080201 | | | |
| SIM translation stage offset (mm) | 0 | -0.01005468664627074 | | | |
| Observation start time | 137066528.387486 | 137066527.36273 | | | |
| Observation start date | 2002-05-06T10:02:08 | 2002-05-06T10:02:07 | | | |
| Observation end time | 137076399.13789 | 137076398.11314 | | | |
| Observation end date | 2002-05-06T12:46:39 | 2002-05-06T12:46:38 | | | |
| Read mode | TIMED | TIMED | | | |

2.3 Aspect

2.4 Star Slots

2.5 FID Slots

A Summary

A.1 Status

| | |
|----------------------------|-------------|
| V&V Scientist | Doug Morgan |
| V&V Date (YYYY-MM-DD) | 2006.09.15 |
| V&V Edition | 1 |
| V&V Disposition and Status | OK |
| V&V Charge Time | 7.79133298 |

A.2 Comments