

# V&V Reference Report

## L2 ASCDS Version : 7.6.9

Observation 61173 - L2 Version 001  
Chandra X-Ray Center

L2 Processing Date : Sep 18 2006

## Contents

<b>1</b>	<b>Front</b>	<b>2</b>
<b>2</b>	<b>OBI</b>	<b>3</b>
2.1	OBI . . . . .	3
2.1.1	Images . . . . .	3
2.1.2	Bias . . . . .	3
2.1.3	Parameters . . . . .	4
2.1.4	Events . . . . .	4
2.2	Compared Parameters . . . . .	5
2.3	Aspect . . . . .	6
2.4	Star Slots . . . . .	8
2.5	FID Slots . . . . .	8
<b>A</b>	<b>Summary</b>	<b>9</b>
A.1	Status . . . . .	9
A.2	Comments . . . . .	9

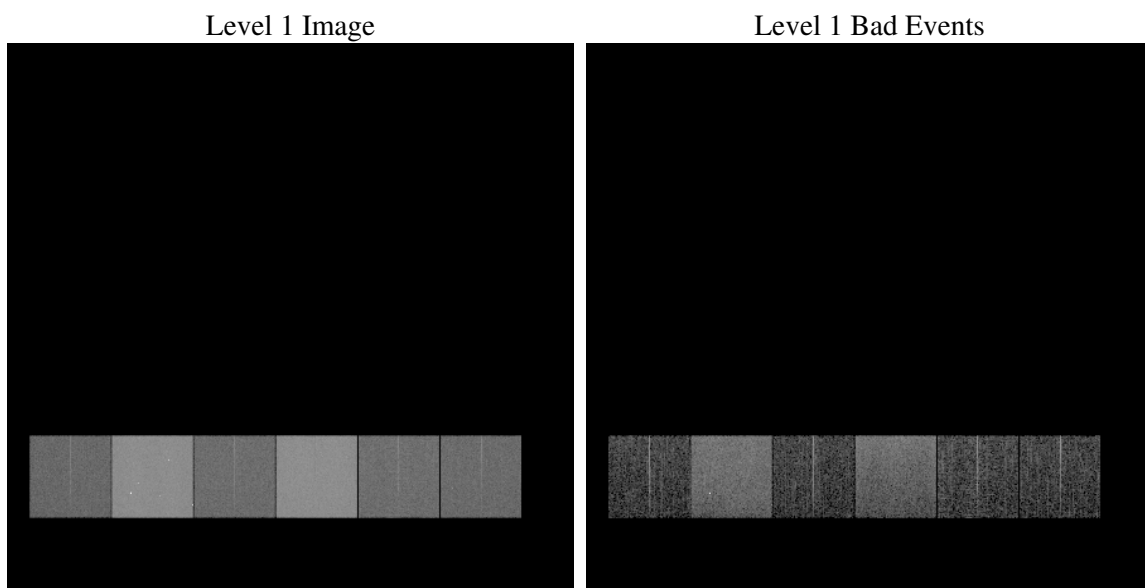
# 1 Front

seq_num	&#160
obs_id	61173
title	ACIS-456789 diagnostics
observer	CHANDRA engineering request/realtime commanding
object	&#160
dtcycle	0
cycle	P
ra_targ	0.0
dec_targ	0.0
ra_nom	135.00370366693
dec_nom	-1.0283873522674
roll_nom	244.57391645522
revision	2
ontime	7623.9699615836
livetime	7527.4306633265
ontime4	2798.2700396478
ontime5	8207.3831402659
ontime6	3041.3063908219
ontime7	7623.9699615836
ontime8	3093.2448317707
ontime9	2953.6754304171
l2events	1291837

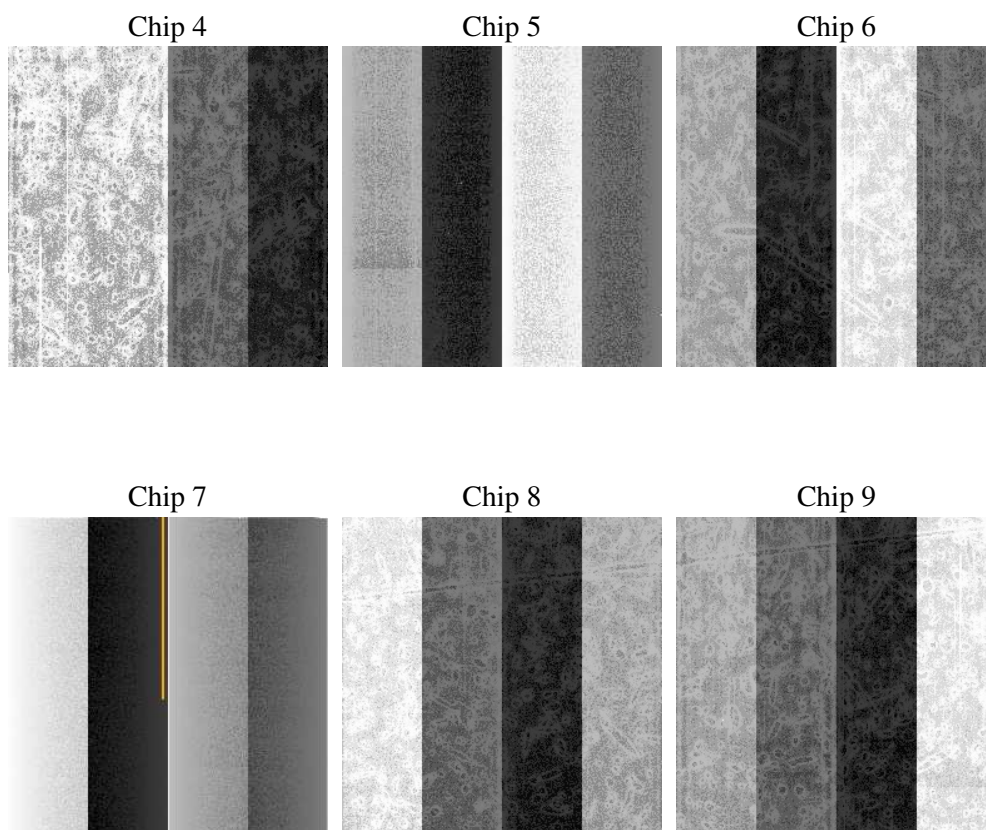
## 2 OBI

### 2.1 OBI

#### 2.1.1 Images



#### 2.1.2 Bias



### 2.1.3 Parameters

obi_num	1
ascdsver	7.6.9
caldbver	3.2.3
date	2006-09-18T10:30:24
revision	2

sched_exp_time	0.0
ontime	7626.0784549415
ontime4	2800.2554129958
ontime5	8209.4505936205
ontime6	3043.3328041732
ontime7	7626.0784549415
ontime8	3095.1891651452
ontime9	2955.8249637783
l1events	1565511

### 2.1.4 Events

	ccd 4	ccd 5	ccd 6	ccd 7	ccd 8	ccd 9
level 1 events	157400	432193	180027	438336	187576	169979
rejected events	22484	68432	22128	55320	25406	22013
rejected %	14%	15%	12%	12%	13%	12%

	ccd 4	ccd 5	ccd 6	ccd 7	ccd 8	ccd 9
grade 0 events	76249	44169	86310	70201	88856	81146
	48%	10%	47%	16%	47%	47%
grade 1 events	387	177	456	177	466	408
	0%	0%	0%	0%	0%	0%
grade 2 events	23792	174299	27244	115657	28788	26114
	15%	40%	15%	26%	15%	15%
grade 3 events	8296	12293	9737	28351	10270	9226
	5%	2%	5%	6%	5%	5%
grade 4 events	8239	12086	9788	28373	10299	9183
	5%	2%	5%	6%	5%	5%
grade 5 events	1364	8047	1660	7444	1793	1698
	0%	1%	0%	1%	0%	0%
grade 6 events	18500	121056	25000	140598	24135	22457
	11%	28%	13%	32%	12%	13%
grade 7 events	20573	60066	19832	47535	22969	19747
	13%	13%	11%	10%	12%	11%

## 2.2 Compared Parameters

Parameter	Planned	Actual	Parameter	Planned	Actual
Instrument	ACIS	ACIS	Obspar format version number	6	6
Detector	ACIS-456789	ACIS-456789	Obspar file type	PREDICTED	ACTUAL
Grating	NONE	NONE	Obspar update status	NONE	UPDATED
Data mode	FAINT	FAINT	On-chip summing requested	N	N
Observation mode	SECONDARY	SECONDARY	Subarray requested	NONE	NONE
Pointing RA	0	135.0037036669257	Alternating exposures requested	N	N
Pointing Dec	0	-1.028387352267444	Primary exposure time	3.2	3.2
Pointing Roll	0.0	244.573916455223			
SIM focus pos (mm)	-0.684267	-0.6828225247311905			
SIM defocus (mm)	0	0.8505141146731063			
SIM translation stage pos (mm)	-190.132523	250.466033080201			
SIM translation stage offset (mm)	0	-0.01005468664627074			
Observation start time	139613671.941364	139613670.91665			
Observation start date	2002-06-04T21:34:32	2002-06-04T21:34:30			
Observation end time	139636006.692276	139636005.66757			
Observation end date	2002-06-05T03:46:47	2002-06-05T03:46:45			
Read mode	TIMED	TIMED			

## 2.3 Aspect



## 2.4 Star Slots

## 2.5 FID Slots



## A Summary

### A.1 Status

V&V Scientist	Jen Lauer
V&V Date (YYYY-MM-DD)	2006.09.18
V&V Edition	1
V&V Disposition and Status	OK
V&V Charge Time	7.62396996

### A.2 Comments