

V&V Reference Report

L2 ASCDS Version : 7.6.9

Observation 61133 - L2 Version 001
Chandra X-Ray Center

L2 Processing Date : Sep 23 2006

Contents

1	Front	2
2	OBI	3
2.1	OBI	3
2.1.1	Images	3
2.1.2	Bias	3
2.1.3	Parameters	4
2.1.4	Events	4
2.2	Compared Parameters	5
2.3	Aspect	6
2.4	Star Slots	8
2.5	FID Slots	8
A	Summary	9
A.1	Status	9
A.2	Comments	9

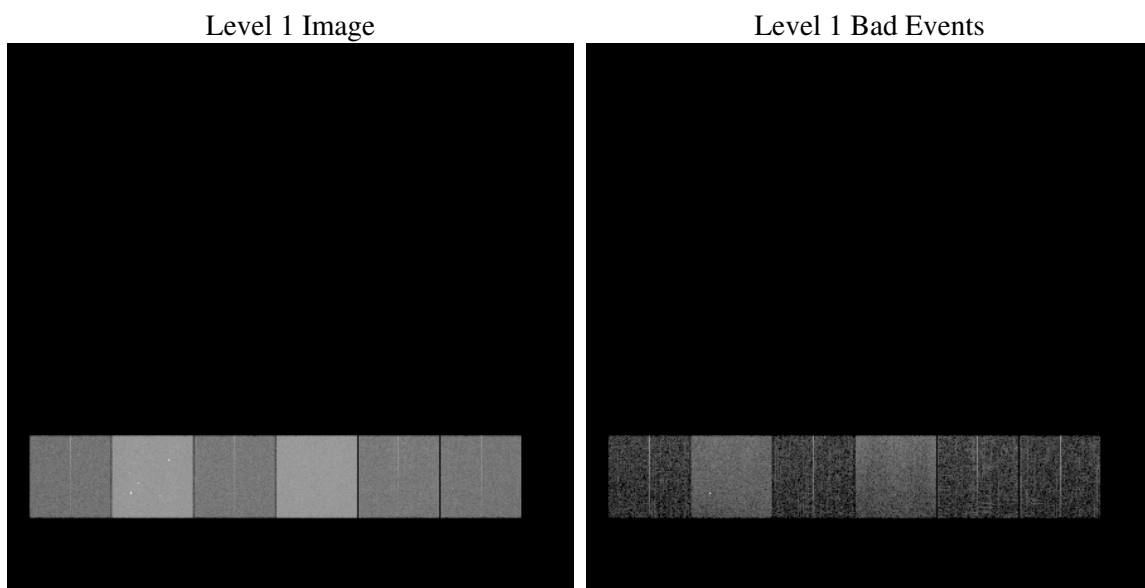
1 Front

seq_num	
obs_id	61133
title	ACIS-456789 diagnostics
observer	CHANDRA engineering request/realtime commanding
object	
dtcycle	0
cycle	P
ra_targ	0.0
dec_targ	0.0
ra_nom	345.97146527552
dec_nom	22.311010134073
roll_nom	124.52074917366
revision	2
ontime	7175.4853705168
livetime	7084.6250541967
ontime4	2589.5880331993
ontime5	7671.393532455
ontime6	2800.2405376434
ontime7	7175.4853705168
ontime8	2822.9423445463
ontime9	2709.3686168194
l2events	1192118

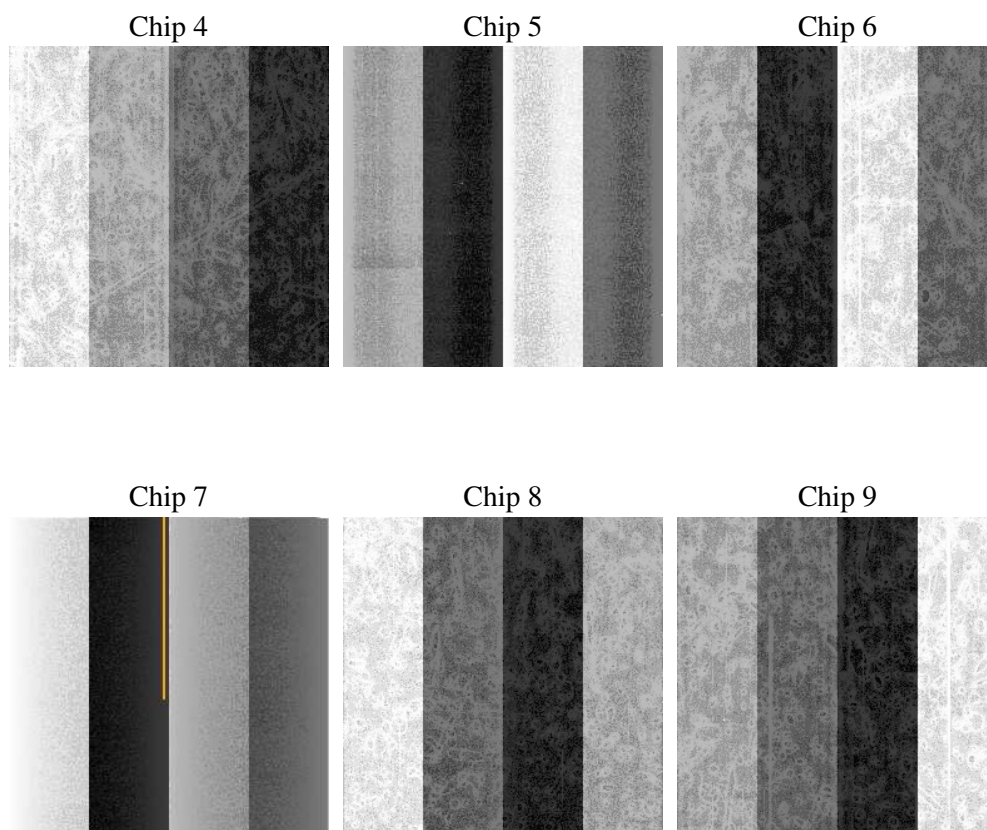
2 OBI

2.1 OBI

2.1.1 Images



2.1.2 Bias



2.1.3 Parameters

obi_num	0
ascdsver	7.6.9
caldsver	3.2.3
date	2006-09-23T03:23:25
revision	2

sched_exp_time	0.0
ontime	7175.5819675326
ontime4	2589.5880331993
ontime5	7671.4490894675
ontime6	2800.2550546527
ontime7	7175.5819675326
ontime8	2822.9423445463
ontime9	2709.5062538385
l1events	1446011

2.1.4 Events

	ccd 4	ccd 5	ccd 6	ccd 7	ccd 8	ccd 9
level 1 events	143168	401697	166364	408540	170455	155787
rejected events	20442	63387	21302	51034	24033	20780
rejected %	14%	15%	12%	12%	14%	13%

	ccd 4	ccd 5	ccd 6	ccd 7	ccd 8	ccd 9
grade 0 events	69272	42267	78945	67667	80356	74290
	48%	10%	47%	16%	47%	47%
grade 1 events	368	121	419	186	408	387
	0%	0%	0%	0%	0%	0%
grade 2 events	21783	161520	25141	106380	25517	23742
	15%	40%	15%	26%	14%	15%
grade 3 events	7407	11356	9013	26912	9162	8339
	5%	2%	5%	6%	5%	5%
grade 4 events	7448	11467	8944	26669	9329	8335
	5%	2%	5%	6%	5%	5%
grade 5 events	1302	7072	1545	6977	1648	1495
	0%	1%	0%	1%	0%	0%
grade 6 events	16816	111700	23019	129878	22058	20301
	11%	27%	13%	31%	12%	13%
grade 7 events	18772	56194	19338	43871	21977	18898
	13%	13%	11%	10%	12%	12%

2.2 Compared Parameters

Parameter	Planned	Actual	Parameter	Planned	Actual
Instrument	ACIS	ACIS	Obspar format version number	6	6
Detector	ACIS-456789	ACIS-456789	Obspar file type	PREDICTED	ACTUAL
Grating	NONE	NONE	Obspar update status	NONE	UPDATED
Data mode	FAINT	FAINT	On-chip summing requested	N	N
Observation mode	SECONDARY	SECONDARY	Subarray requested	NONE	NONE
Pointing RA	0	345.9714652755218	Alternating exposures requested	N	N
Pointing Dec	0	22.31101013407276	Primary exposure time	3.2	3.2
Pointing Roll	0.0	124.5207491736634			
SIM focus pos (mm)	-0.684267	-0.7809083437167272			
SIM defocus (mm)	0	0.7524282956875696			
SIM translation stage pos (mm)	-190.132523	250.466033080201			
SIM translation stage offset (mm)	0	-0.01005468664627074			
Observation start time	142551754.611695	142551753.58698			
Observation start date	2002-07-08T21:42:35	2002-07-08T21:42:33			
Observation end time	142589624.263248	142589623.23854			
Observation end date	2002-07-09T08:13:44	2002-07-09T08:13:43			
Read mode	TIMED	TIMED			

2.3 Aspect

2.4 Star Slots

2.5 FID Slots

A Summary

A.1 Status

V&V Scientist	Beth Sundheim
V&V Date (YYYY-MM-DD)	2006.09.24
V&V Edition	1
V&V Disposition and Status	OK
V&V Charge Time	7.17548537

A.2 Comments