

V&V Reference Report

L2 ASCDS Version : 7.6.9

Observation 61093 - L2 Version 001
Chandra X-Ray Center

L2 Processing Date : Sep 30 2006

Contents

1	Front	2
2	OBI	3
2.1	OBI	3
2.1.1	Images	3
2.1.2	Bias	3
2.1.3	Parameters	4
2.1.4	Events	4
2.2	Compared Parameters	5
2.3	Aspect	6
2.4	Star Slots	8
2.5	FID Slots	8
A	Summary	9
A.1	Status	9
A.2	Comments	9

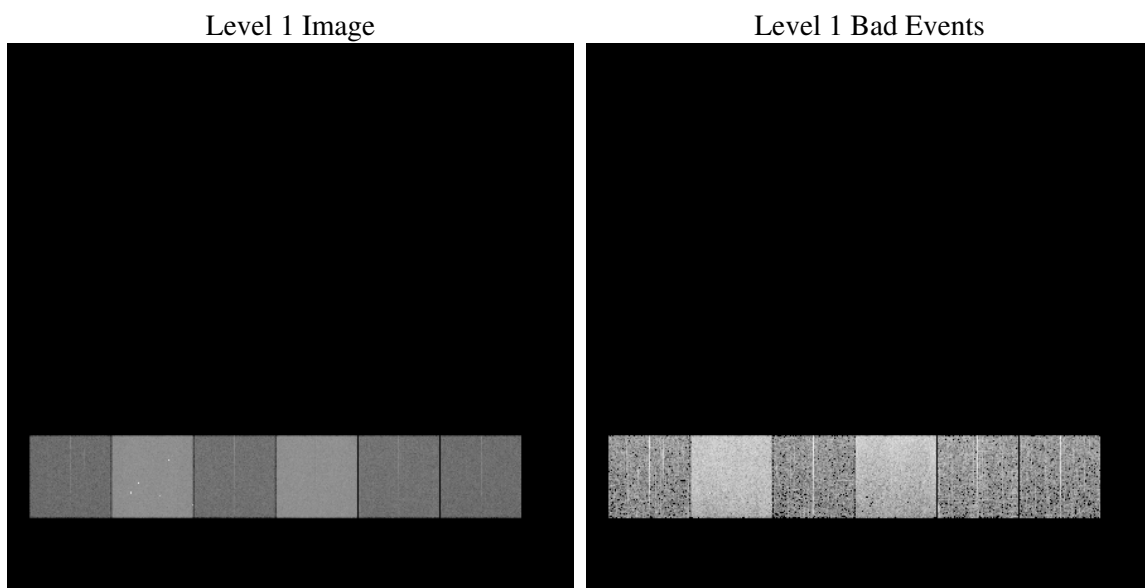
1 Front

seq_num	
obs_id	61093
title	ACIS-456789 diagnostics
observer	CHANDRA engineering request/realtime commanding
object	
dtcycle	0
cycle	P
ra_targ	0.0
dec_targ	0.0
ra_nom	52.935501517764
dec_nom	-19.695673936444
roll_nom	107.62844830167
revision	2
ontime	7270.2055069506
livetime	7178.1457872294
ontime4	2828.1138513386
ontime5	7791.9999709725
ontime6	3022.5348123014
ontime7	7270.2055069506
ontime8	3045.3037638366
ontime9	2833.3024559021
l2events	1198427

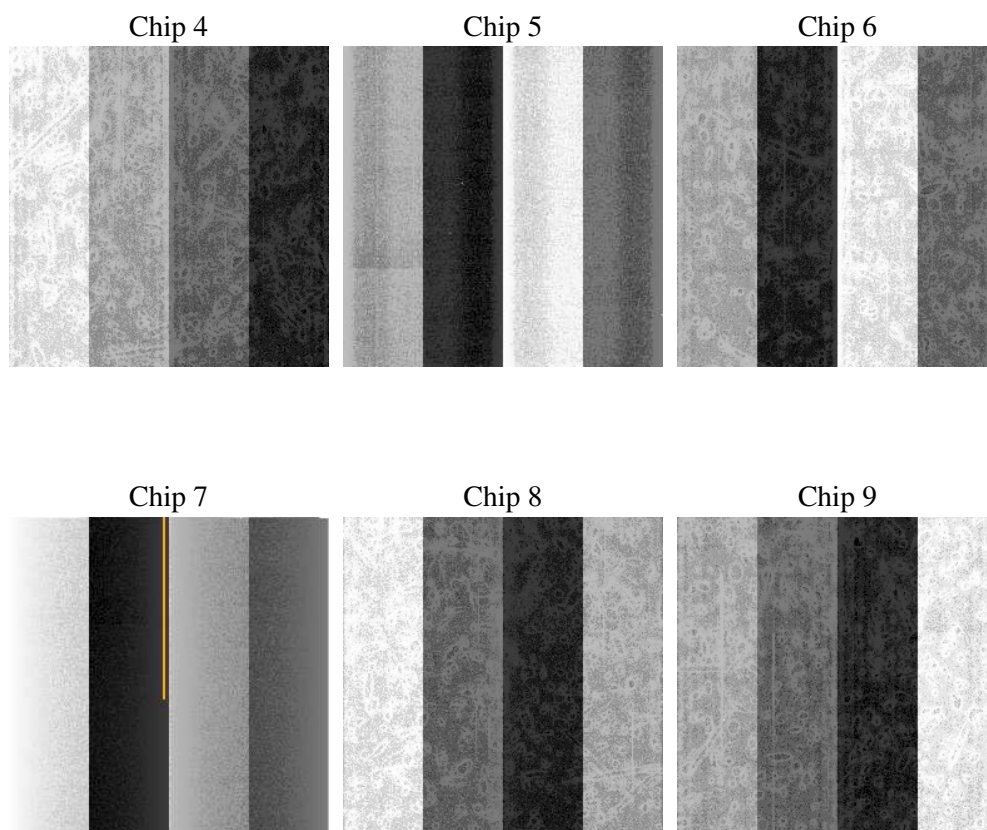
2 OBI

2.1 OBI

2.1.1 Images



2.1.2 Bias



2.1.3 Parameters

obi_num	0
ascdsver	7.6.9
caldsver	3.2.3
date	2006-09-30T16:26:28
revision	2

sched_exp_time	0.0
ontime	7272.8093166053
ontime4	2829.4240957499
ontime5	7794.6037806273
ontime6	3023.8860967159
ontime7	7272.8093166053
ontime8	3046.5729682744
ontime9	2835.9062655568
l1events	1442897

2.1.4 Events

	ccd 4	ccd 5	ccd 6	ccd 7	ccd 8	ccd 9
level 1 events	150895	392525	171150	396572	175865	155890
rejected events	20102	57306	19124	48974	22959	19122
rejected %	13%	14%	11%	12%	13%	12%

	ccd 4	ccd 5	ccd 6	ccd 7	ccd 8	ccd 9
grade 0 events	76085	46884	83245	64480	84519	75404
	50%	11%	48%	16%	48%	48%
grade 1 events	492	219	357	151	404	408
	0%	0%	0%	0%	0%	0%
grade 2 events	20900	157393	26244	104180	26662	23697
	13%	40%	15%	26%	15%	15%
grade 3 events	8700	11842	9332	25958	9568	8813
	5%	3%	5%	6%	5%	5%
grade 4 events	8555	11753	9505	25445	9636	8591
	5%	2%	5%	6%	5%	5%
grade 5 events	1418	6571	1544	6657	1594	1543
	0%	1%	0%	1%	0%	0%
grade 6 events	16553	107347	23700	127535	22521	20263
	10%	27%	13%	32%	12%	12%
grade 7 events	18192	50516	17223	42166	20961	17171
	12%	12%	10%	10%	11%	11%

2.2 Compared Parameters

Parameter	Planned	Actual	Parameter	Planned	Actual
Instrument	ACIS	ACIS	Obspar format version number	6	6
Detector	ACIS-456789	ACIS-456789	Obspar file type	PREDICTED	ACTUAL
Grating	NONE	NONE	Obspar update status	NONE	UPDATED
Data mode	FAINT	FAINT	On-chip summing requested	N	N
Observation mode	SECONDARY	SECONDARY	Subarray requested	NONE	NONE
Pointing RA	0	52.93550151776409	Alternating exposures requested	N	N
Pointing Dec	0	-19.69567393644384	Primary exposure time	3.2	3.2
Pointing Roll	0.0	107.628448301673			
SIM focus pos (mm)	-0.684267	-0.6828225247311905			
SIM defocus (mm)	0	0.8505141146731063			
SIM translation stage pos (mm)	-190.132523	250.466033080201			
SIM translation stage offset (mm)	0	-0.01005468664627074			
Observation start time	145063199.464932	145063198.44022			
Observation start date	2002-08-06T23:19:59	2002-08-06T23:19:58			
Observation end time	145100195.816454	145100194.79174			
Observation end date	2002-08-07T09:36:36	2002-08-07T09:36:34			
Read mode	TIMED	TIMED			

2.3 Aspect

2.4 Star Slots

2.5 FID Slots

A Summary

A.1 Status

V&V Scientist	Jen Lauer
V&V Date (YYYY-MM-DD)	2006.10.02
V&V Edition	1
V&V Disposition and Status	OK
V&V Charge Time	7.2702055

A.2 Comments