

V&V Reference Report

L2 ASCDS Version : 7.6.9

Observation 61073 - L2 Version 001
Chandra X-Ray Center

L2 Processing Date : Sep 28 2006

Contents

1	Front	2
2	OBI	3
2.1	OBI	3
2.1.1	Images	3
2.1.2	Bias	3
2.1.3	Parameters	4
2.1.4	Events	4
2.2	Compared Parameters	5
2.3	Aspect	6
2.4	Star Slots	8
2.5	FID Slots	8
A	Summary	9
A.1	Status	9
A.2	Comments	9

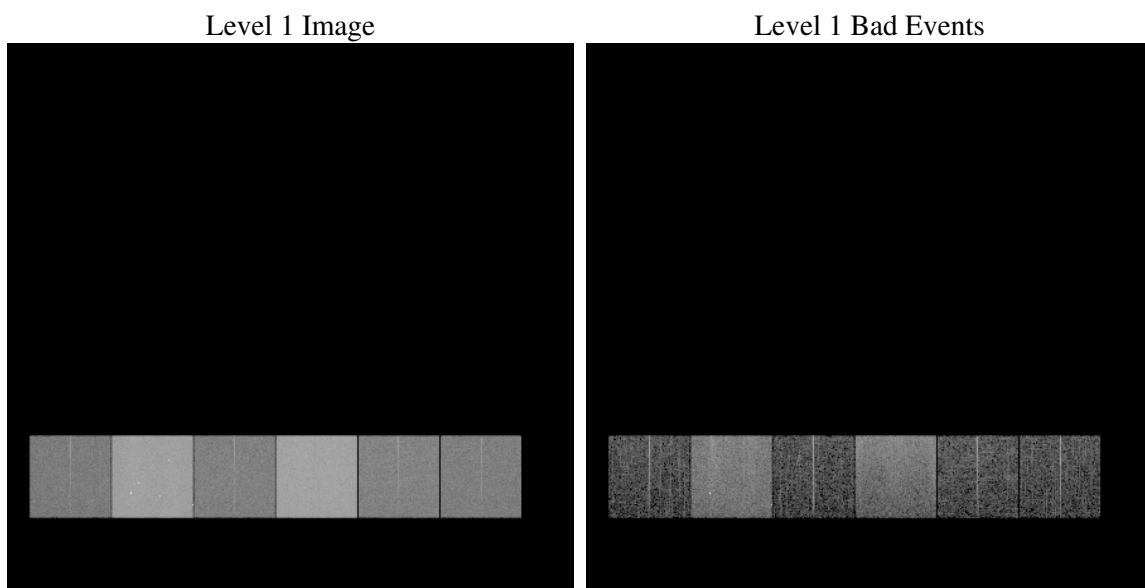
1 Front

seq_num	
obs_id	61073
title	ACIS-456789 diagnostics
observer	CHANDRA engineering request/realtime commanding
object	
dtcycle	0
cycle	P
ra_targ	0.0
dec_targ	0.0
ra_nom	344.97083325814
dec_nom	11.798240827211
roll_nom	150.72641661665
revision	2
ontime	8240.4319650531
livetime	8136.0866537192
ontime4	2964.2316697836
ontime5	8444.7999685407
ontime6	3197.5449210107
ontime7	8240.4319650531
ontime8	3320.7864314318
ontime9	3126.1190806627
l2events	1278931

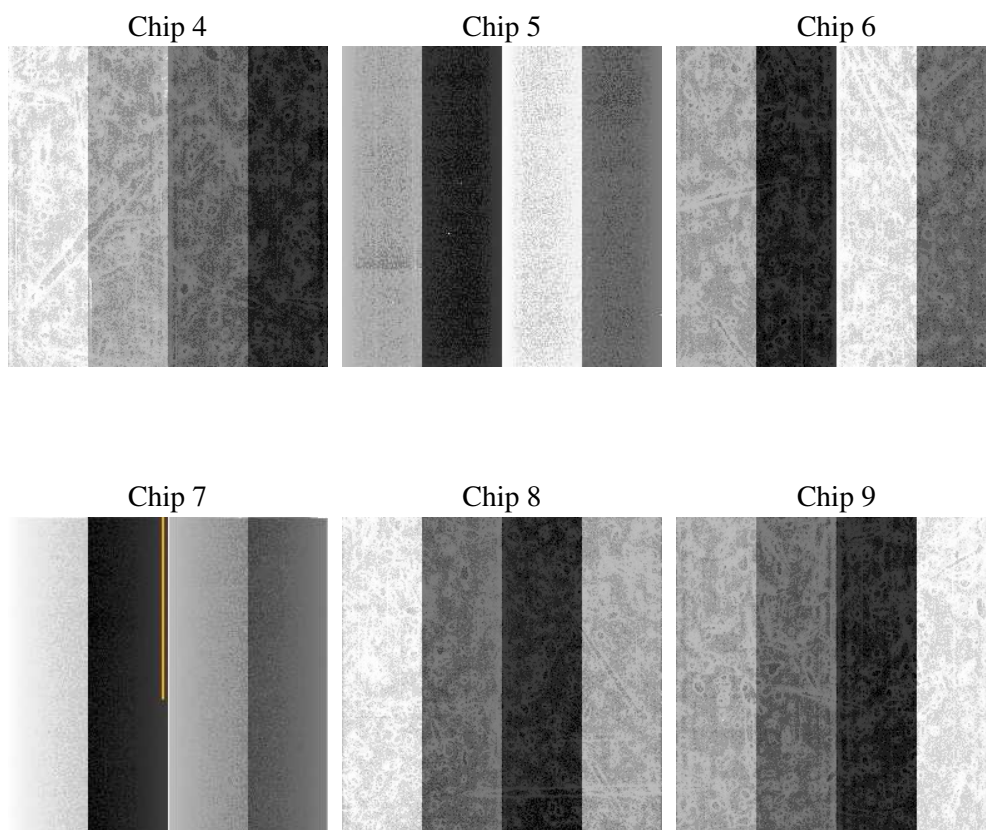
2 OBI

2.1 OBI

2.1.1 Images



2.1.2 Bias



2.1.3 Parameters

obi_num	1
ascdsver	7.6.9
caldbver	3.2.3
date	2006-09-28T22:18:41
revision	2

sched_exp_time	0.0
ontime	8251.5945607722
ontime4	2972.0301752687
ontime5	8462.2573688626
ontime6	3202.1434265077
ontime7	8251.5945607722
ontime8	3325.302856952
ontime9	3134.0816963315
l1events	1555610

2.1.4 Events

	ccd 4	ccd 5	ccd 6	ccd 7	ccd 8	ccd 9
level 1 events	156957	417152	178985	444527	188792	169197
rejected events	22931	68375	22714	58318	24894	22702
rejected %	14%	16%	12%	13%	13%	13%

	ccd 4	ccd 5	ccd 6	ccd 7	ccd 8	ccd 9
grade 0 events	79242	36535	85126	67050	91057	81825
	50%	8%	47%	15%	48%	48%
grade 1 events	577	180	382	143	449	467
	0%	0%	0%	0%	0%	0%
grade 2 events	20161	168629	27454	120010	28350	24664
	12%	40%	15%	26%	15%	14%
grade 3 events	8822	10827	9427	27788	10262	9277
	5%	2%	5%	6%	5%	5%
grade 4 events	8981	10351	9476	27195	10514	9326
	5%	2%	5%	6%	5%	5%
grade 5 events	1422	7201	1572	7369	1840	1706
	0%	1%	0%	1%	0%	1%
grade 6 events	17125	123104	24942	144617	23877	21715
	10%	29%	13%	32%	12%	12%
grade 7 events	20627	60325	20606	50355	22443	20217
	13%	14%	11%	11%	11%	11%

2.2 Compared Parameters

Parameter	Planned	Actual	Parameter	Planned	Actual
Instrument	ACIS	ACIS	Obspar format version number	6	6
Detector	ACIS-456789	ACIS-456789	Obspar file type	PREDICTED	ACTUAL
Grating	NONE	NONE	Obspar update status	NONE	UPDATED
Data mode	FAINT	FAINT	On-chip summing requested	N	N
Observation mode	SECONDARY	SECONDARY	Subarray requested	NONE	NONE
Pointing RA	0	344.9708332581387	Alternating exposures requested	N	N
Pointing Dec	0	11.7982408272114	Primary exposure time	0.000000	3.2
Pointing Roll	0.0	150.7264166166536			
SIM focus pos (mm)	-0.684267	-0.6828225247311905			
SIM defocus (mm)	0	0.8505141146731063			
SIM translation stage pos (mm)	-190.132523	250.466033080201			
SIM translation stage offset (mm)	0	-0.01005468664627074			
Observation start time	146473388.373042	146473387.34832			
Observation start date	2002-08-23T07:03:08	2002-08-23T07:03:07			
Observation end time	146494698.123921	146494697.0992			
Observation end date	2002-08-23T12:58:18	2002-08-23T12:58:17			
Read mode	TIMED	TIMED			

2.3 Aspect

2.4 Star Slots

2.5 FID Slots

A Summary

A.1 Status

V&V Scientist	Jen Lauer
V&V Date (YYYY-MM-DD)	2006.09.29
V&V Edition	1
V&V Disposition and Status	OK
V&V Charge Time	8.24043196

A.2 Comments

The ACIS focal plane temperature was above calibration limits for the entire observation.