

V&V Reference Report

L2 ASCDS Version : 7.6.9

Observation 61033 - L2 Version 001
Chandra X-Ray Center

L2 Processing Date : Oct 4 2006

Contents

1	Front	2
2	OBI	3
2.1	OBI	3
2.1.1	Images	3
2.1.2	Bias	3
2.1.3	Parameters	4
2.1.4	Events	4
2.2	Compared Parameters	5
2.3	Aspect	6
2.4	Star Slots	8
2.5	FID Slots	8
A	Summary	9
A.1	Status	9
A.2	Comments	9

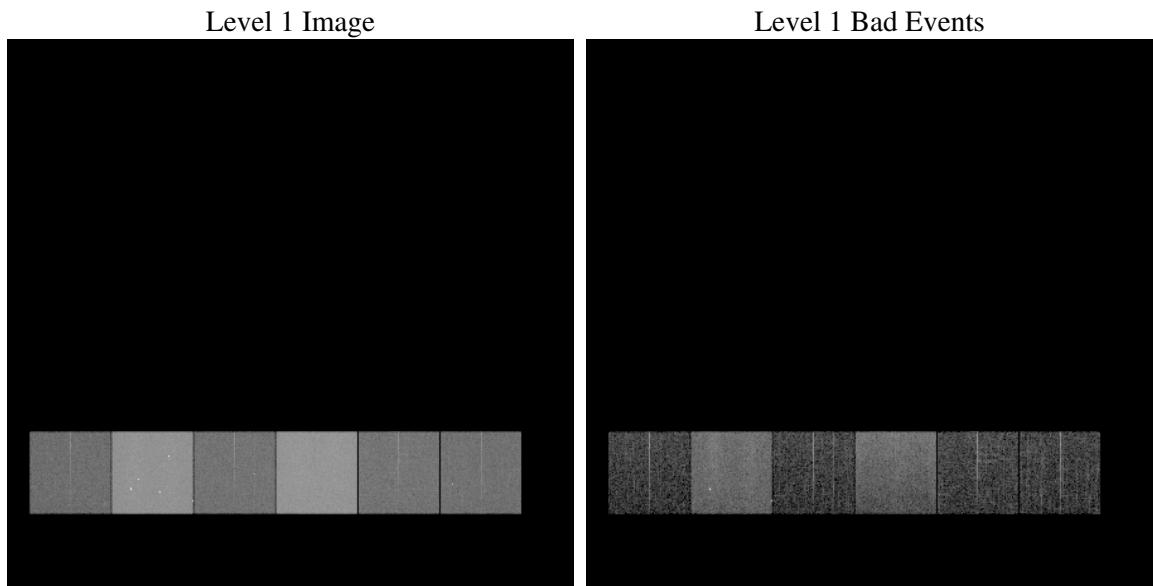
1 Front

seq_num	
obs_id	61033
title	ACIS-456789 diagnostics
observer	CHANDRA engineering request/realtime commanding
object	
dtcycle	0
cycle	P
ra_targ	0.0
dec_targ	0.0
ra_nom	282.62975766371
dec_nom	-46.019791520406
roll_nom	283.38871421497
revision	2
ontime	8208.8650731444
livetime	8104.9194808032
ontime4	2896.8936859667
ontime5	8393.5999687314
ontime6	3183.8616467118
ontime7	8208.8650731444
ontime8	3203.3900957704
ontime9	3057.3385649323
l2events	1257400

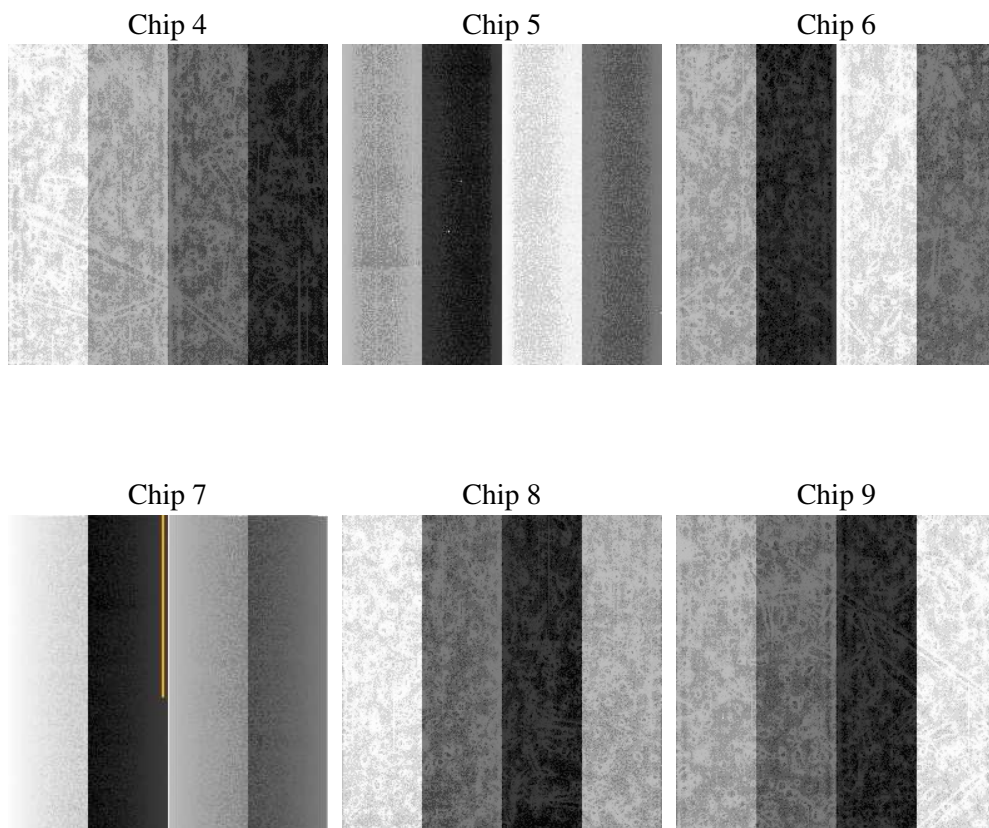
2 OBI

2.1 OBI

2.1.1 Images



2.1.2 Bias



2.1.3 Parameters

obi_num	1
ascdsver	7.6.9
caldbver	3.2.3
date	2006-10-04T19:13:27
revision	2

sched_exp_time	0.0
ontime	8264.5550430715
ontime4	2923.4148439765
ontime5	8455.7718492448
ontime6	3208.6252272725
ontime7	8264.5550430715
ontime8	3228.0715963542
ontime9	3082.2252655029
l1events	1555331

2.1.4 Events

	ccd 4	ccd 5	ccd 6	ccd 7	ccd 8	ccd 9
level 1 events	153442	422322	179332	446224	185145	168866
rejected events	23763	75194	24599	64048	27054	24722
rejected %	15%	17%	13%	14%	14%	14%

	ccd 4	ccd 5	ccd 6	ccd 7	ccd 8	ccd 9
grade 0 events	77540	37231	84307	64678	88507	81154
	50%	8%	47%	14%	47%	48%
grade 1 events	575	233	382	144	433	449
	0%	0%	0%	0%	0%	0%
grade 2 events	19370	167102	27955	121317	27467	24101
	12%	39%	15%	27%	14%	14%
grade 3 events	8624	10289	9216	26792	9995	9111
	5%	2%	5%	6%	5%	5%
grade 4 events	8588	9553	9155	26095	9833	9068
	5%	2%	5%	5%	5%	5%
grade 5 events	1419	7715	1681	7541	1923	1677
	0%	1%	0%	1%	1%	0%
grade 6 events	16893	125594	25379	145875	23543	21922
	11%	29%	14%	32%	12%	12%
grade 7 events	20433	64605	21257	53782	23444	21384
	13%	15%	11%	12%	12%	12%

2.2 Compared Parameters

Parameter	Planned	Actual	Parameter	Planned	Actual
Instrument	ACIS	ACIS	Obspar format version number	6	6
Detector	ACIS-456789	ACIS-456789	Obspar file type	PREDICTED	ACTUAL
Grating	NONE	NONE	Obspar update status	NONE	UPDATED
Data mode	FAINT	FAINT	On-chip summing requested	N	N
Observation mode	SECONDARY	SECONDARY	Subarray requested	NONE	NONE
Pointing RA	0	282.6297576637081	Alternating exposures requested	N	N
Pointing Dec	0	-46.0197915204058	Primary exposure time	3.2	3.2
Pointing Roll	0.0	283.388714214967			
SIM focus pos (mm)	-0.684267	-0.6828225247311905			
SIM defocus (mm)	0	0.8505141146731063			
SIM translation stage pos (mm)	-190.132523	250.466033080201			
SIM translation stage offset (mm)	0	-0.01005468664627074			
Observation start time	148297652.698334	148297651.67361			
Observation start date	2002-09-13T09:47:33	2002-09-13T09:47:31			
Observation end time	148319946.449254	148319945.42454			
Observation end date	2002-09-13T15:59:06	2002-09-13T15:59:05			
Read mode	TIMED	TIMED			

2.3 Aspect

2.4 Star Slots

2.5 FID Slots

A Summary

A.1 Status

V&V Scientist	Jen Lauer
V&V Date (YYYY-MM-DD)	2006.10.05
V&V Edition	1
V&V Disposition and Status	OK
V&V Charge Time	8.20886507

A.2 Comments

The ACIS focal plane temperature was above calibration limits for the entire observation.