

V&V Reference Report

L2 ASCDS Version : 7.6.9

Observation 60973 - L2 Version 001
Chandra X-Ray Center

L2 Processing Date : Oct 12 2006

Contents

1	Front	2
2	OBI	3
2.1	OBI	3
2.1.1	Images	3
2.1.2	Bias	3
2.1.3	Parameters	4
2.1.4	Events	4
2.2	Compared Parameters	5
2.3	Aspect	6
2.4	Star Slots	8
2.5	FID Slots	8
A	Summary	9
A.1	Status	9
A.2	Comments	9

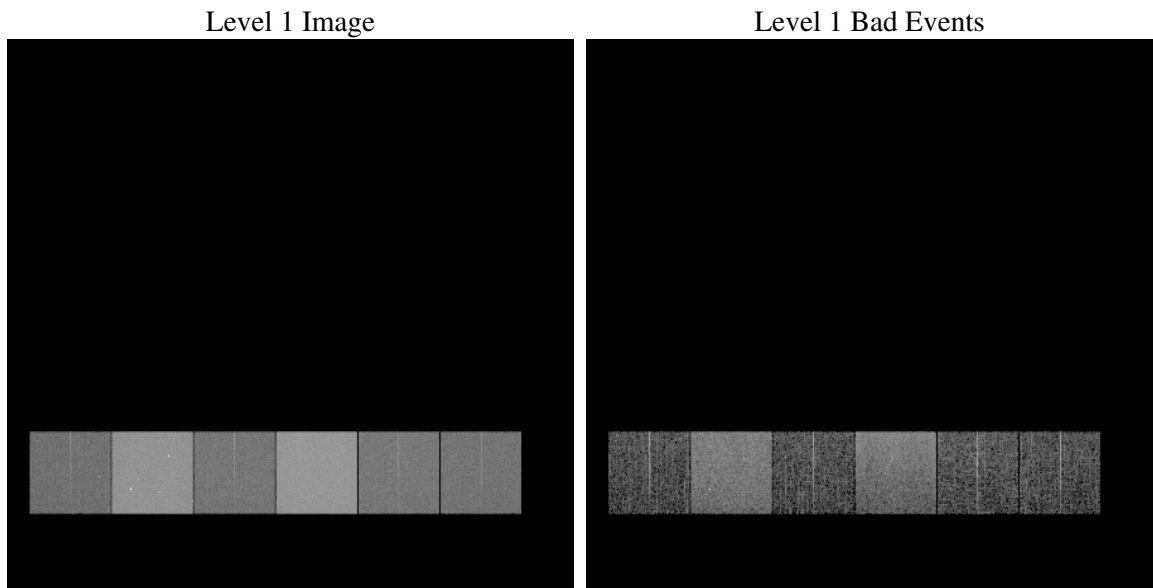
1 Front

seq_num	
obs_id	60973
title	ACIS-456789 diagnostics
observer	CHANDRA engineering request/realtime commanding
object	
dtcycle	0
cycle	P
ra_targ	0.0
dec_targ	0.0
ra_nom	338.41887068865
dec_nom	18.777638775452
roll_nom	275.75994666374
revision	2
ontime	8459.622268945
livetime	8352.5014380026
ontime4	3069.9892542958
ontime5	8459.6633089483
ontime6	3342.1945073307
ontime7	8459.622268945
ontime8	3514.050829947
ontime9	3280.4919663966
l2events	1270593

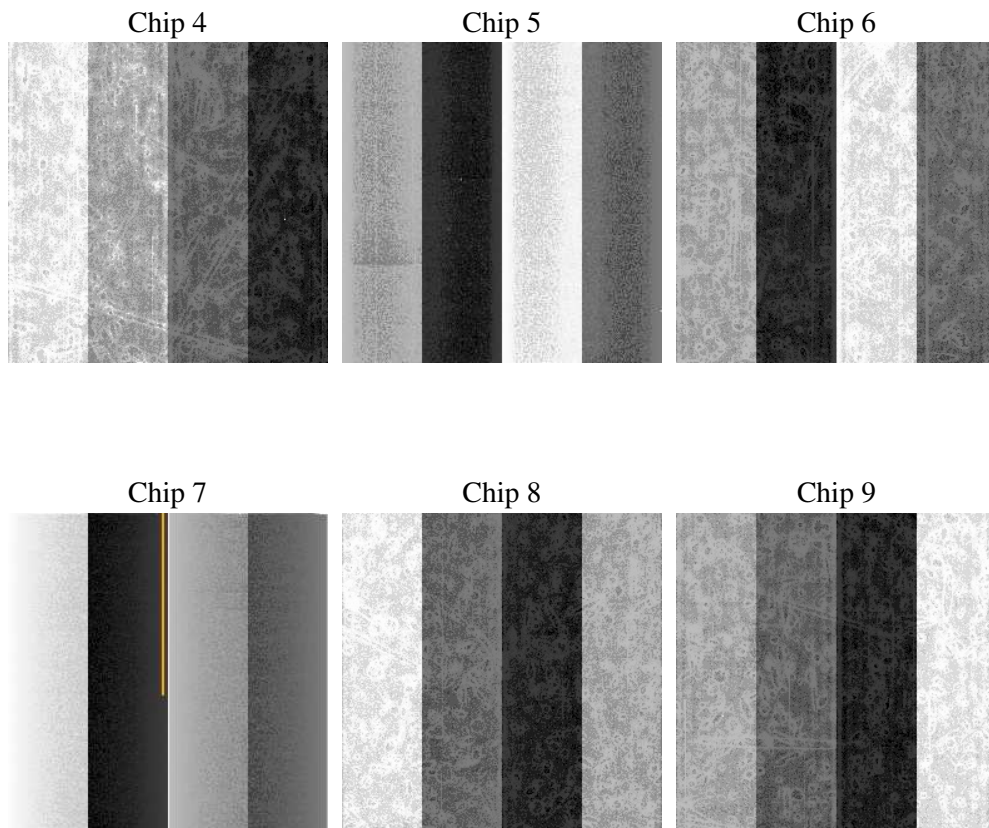
2 OBI

2.1 OBI

2.1.1 Images



2.1.2 Bias



2.1.3 Parameters

obi_num	1
ascdsver	7.6.9
caldsver	3.2.3
date	2006-10-12T05:12:00
revision	2

sched_exp_time	0.0
ontime	8462.2581317127
ontime4	3072.5019970536
ontime5	8462.2581317127
ontime6	3344.7482900918
ontime7	8462.2581317127
ontime8	3516.5225327313
ontime9	3283.1688691676
l1events	1549070

2.1.4 Events

	ccd 4	ccd 5	ccd 6	ccd 7	ccd 8	ccd 9
level 1 events	157907	404116	181445	440917	192438	172247
rejected events	23554	65052	24092	56821	26715	23580
rejected %	14%	16%	13%	12%	13%	13%

	ccd 4	ccd 5	ccd 6	ccd 7	ccd 8	ccd 9
grade 0 events	78000	41245	86434	70816	91805	82034
	49%	10%	47%	16%	47%	47%
grade 1 events	526	140	462	156	445	436
	0%	0%	0%	0%	0%	0%
grade 2 events	21792	162612	27086	115139	28877	25615
	13%	40%	14%	26%	15%	14%
grade 3 events	8951	11168	9636	28941	10673	9581
	5%	2%	5%	6%	5%	5%
grade 4 events	8713	10999	9820	28558	10515	9439
	5%	2%	5%	6%	5%	5%
grade 5 events	1522	7244	1652	7497	1915	1699
	0%	1%	0%	1%	0%	0%
grade 6 events	17034	113162	24530	140802	24020	22121
	10%	28%	13%	31%	12%	12%
grade 7 events	21369	57546	21825	49008	24188	21322
	13%	14%	12%	11%	12%	12%

2.2 Compared Parameters

Parameter	Planned	Actual	Parameter	Planned	Actual
Instrument	ACIS	ACIS	Obspar format version number	6	6
Detector	ACIS-456789	ACIS-456789	Obspar file type	PREDICTED	ACTUAL
Grating	NONE	NONE	Obspar update status	NONE	UPDATED
Data mode	FAINT	FAINT	On-chip summing requested	N	N
Observation mode	SECONDARY	SECONDARY	Subarray requested	NONE	NONE
Pointing RA	0	338.4188706886523	Alternating exposures requested	N	N
Pointing Dec	0	18.77763877545225	Primary exposure time	3.2	3.2
Pointing Roll	0.0	275.7599466637359			
SIM focus pos (mm)	-0.684267	-0.6828225247311905			
SIM defocus (mm)	0	0.8505141146731063			
SIM translation stage pos (mm)	-190.132523	250.466033080201			
SIM translation stage offset (mm)	0	-0.01005468664627074			
Observation start time	152639518.028309	152639517.00359			
Observation start date	2002-11-02T15:51:58	2002-11-02T15:51:57			
Observation end time	152662326.329258	152662325.30453			
Observation end date	2002-11-02T22:12:06	2002-11-02T22:12:05			
Read mode	TIMED	TIMED			

2.3 Aspect

2.4 Star Slots

2.5 FID Slots

A Summary

A.1 Status

V&V Scientist	Jen Lauer
V&V Date (YYYY-MM-DD)	2006.10.12
V&V Edition	1
V&V Disposition and Status	OK
V&V Charge Time	8.45962226

A.2 Comments