

# V&V Reference Report

## L2 ASCDS Version : 7.6.8

Observation 60843 - L2 Version 001  
Chandra X-Ray Center

L2 Processing Date : Jul 28 2006

## Contents

<b>1</b>	<b>Front</b>	<b>2</b>
<b>2</b>	<b>OBI</b>	<b>3</b>
2.1	OBI . . . . .	3
2.1.1	Images . . . . .	3
2.1.2	Bias . . . . .	3
2.1.3	Parameters . . . . .	4
2.1.4	Events . . . . .	4
2.2	Compared Parameters . . . . .	5
2.3	Aspect . . . . .	6
2.4	Star Slots . . . . .	8
2.5	FID Slots . . . . .	8
<b>A</b>	<b>Summary</b>	<b>9</b>
A.1	Status . . . . .	9
A.2	Comments . . . . .	9

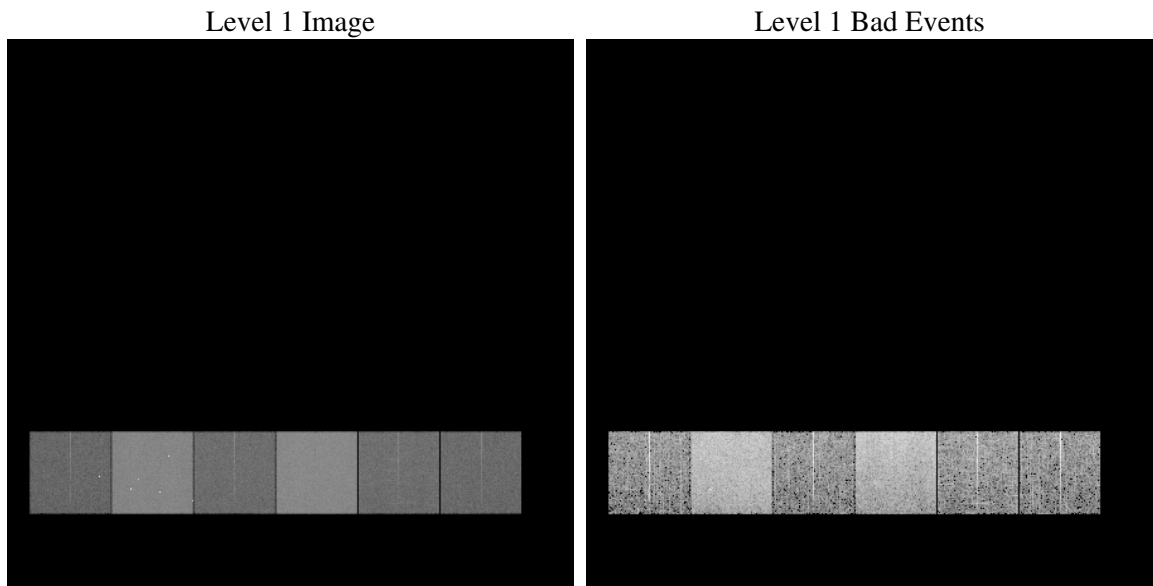
# 1 Front

seq_num	&#160
obs_id	60843
title	ACIS-456789 diagnostics
observer	CHANDRA engineering request/realtime commanding
object	&#160
dtcycle	0
cycle	P
ra_targ	0.0
dec_targ	0.0
ra_nom	321.42548147783
dec_nom	38.620484092941
roll_nom	12.989884649868
revision	2
ontime	7791.9999709725
livetime	7693.332975561
ontime4	3196.298789978
ontime5	7791.9999709725
ontime6	3578.7389084697
ontime7	7791.9999709725
ontime8	3601.4253307581
ontime9	3408.1971534193
l2events	1159557

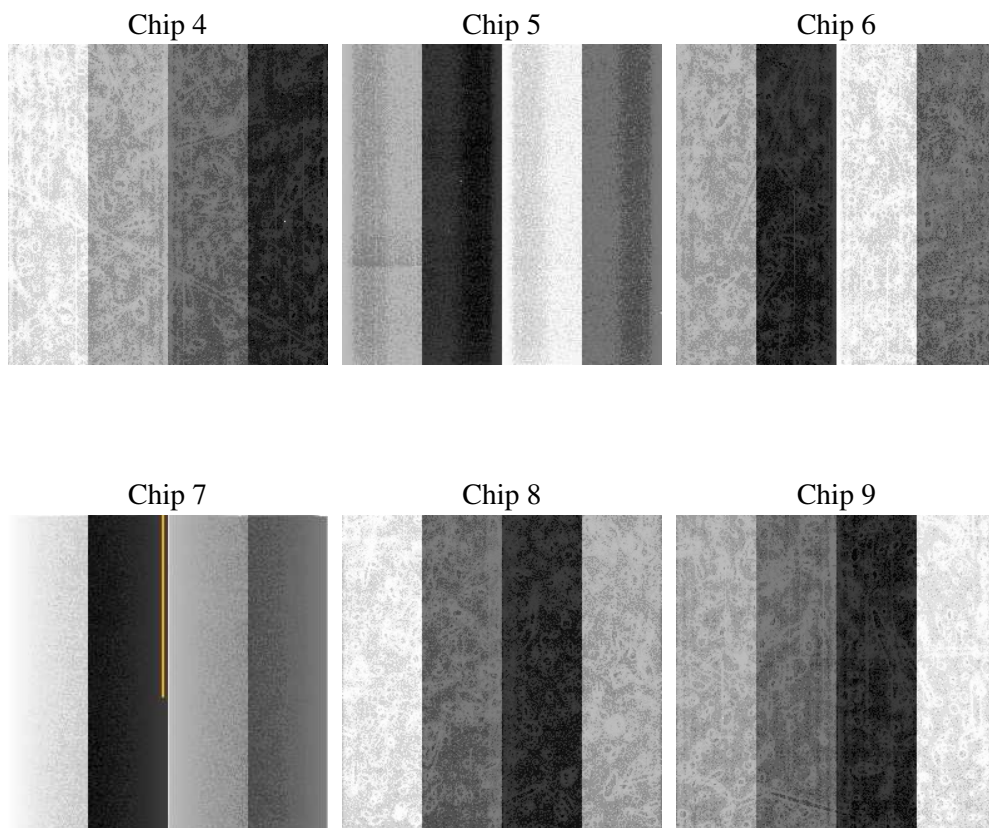
## 2 OBI

### 2.1 OBI

#### 2.1.1 Images



#### 2.1.2 Bias



### 2.1.3 Parameters

obi_num	0
ascdsver	7.6.8
caldsver	3.2.2
date	2006-07-28T04:37:33
revision	2

sched_exp_time	0.0
ontime	7794.6003174782
ontime4	3198.8991364837
ontime5	7794.6003174782
ontime6	3581.3392549753
ontime7	7794.6003174782
ontime8	3604.0256772637
ontime9	3409.5654708743
l1events	1423954

### 2.1.4 Events

	ccd 4	ccd 5	ccd 6	ccd 7	ccd 8	ccd 9
level 1 events	153602	355873	180909	381264	186002	166304
rejected events	23275	56737	23470	51602	26427	23295
rejected %	15%	15%	12%	13%	14%	14%

	ccd 4	ccd 5	ccd 6	ccd 7	ccd 8	ccd 9
grade 0 events	75835	42327	86067	60600	87671	78674
	49%	11%	47%	15%	47%	47%
grade 1 events	475	185	414	147	429	441
	0%	0%	0%	0%	0%	0%
grade 2 events	20669	138779	27329	98936	28007	24490
	13%	38%	15%	25%	15%	14%
grade 3 events	8801	10821	9751	24880	10215	9128
	5%	3%	5%	6%	5%	5%
grade 4 events	8641	10367	9629	24600	10232	9072
	5%	2%	5%	6%	5%	5%
grade 5 events	1487	6298	1736	6854	1905	1765
	0%	1%	0%	1%	1%	1%
grade 6 events	16381	96842	24663	120646	23450	21645
	10%	27%	13%	31%	12%	13%
grade 7 events	21313	50254	21320	44601	24093	21089
	13%	14%	11%	11%	12%	12%

## 2.2 Compared Parameters

Parameter	Planned	Actual	Parameter	Planned	Actual
Instrument	ACIS	ACIS	Obspar format version number	6	6
Detector	ACIS-456789	ACIS-456789	Obspar file type	PREDICTED	ACTUAL
Grating	NONE	NONE	Obspar update status	NONE	UPDATED
Data mode	FAINT	FAINT	On-chip summing requested	N	N
Observation mode	SECONDARY	SECONDARY	Subarray requested	NONE	NONE
Pointing RA	0	321.4254814778345	Alternating exposures requested	N	N
Pointing Dec	0	38.62048409294097	Primary exposure time	0.000000	3.2
Pointing Roll	0.0	12.98988464986765			
SIM focus pos (mm)	-0.684267	-0.6828225247311905			
SIM defocus (mm)	0	0.8505141146731063			
SIM translation stage pos (mm)	-190.132523	250.466033080201			
SIM translation stage offset (mm)	0	-0.01005468664627074			
Observation start time	161970062.66816	161970061.64345			
Observation start date	2003-02-18T15:41:03	2003-02-18T15:41:01			
Observation end time	161981493.468641	161981492.44393			
Observation end date	2003-02-18T18:51:33	2003-02-18T18:51:32			
Read mode	TIMED	TIMED			

## 2.3 Aspect



## **2.4 Star Slots**

## **2.5 FID Slots**



## A Summary

### A.1 Status

V&V Scientist	Jen Lauer
V&V Date (YYYY-MM-DD)	2006.07.28
V&V Edition	1
V&V Disposition and Status	OK
V&V Charge Time	7.79199997

### A.2 Comments