

V&V Reference Report

L2 ASCDS Version : 8.4.5

Observation 60833 - L2 Version 3
Chandra X-Ray Center

L2 Processing Date : Oct 23 2012

Contents

1	Front	2
2	OBI	3
2.1	OBI	3
2.1.1	Images	3
2.1.2	Bias	3
2.1.3	Parameters	4
2.1.4	Events	4
2.2	Compared Parameters	5
2.3	Star Slots	6
2.4	FID Slots	6
A	Summary	7
A.1	Status	7
A.2	Comments	7

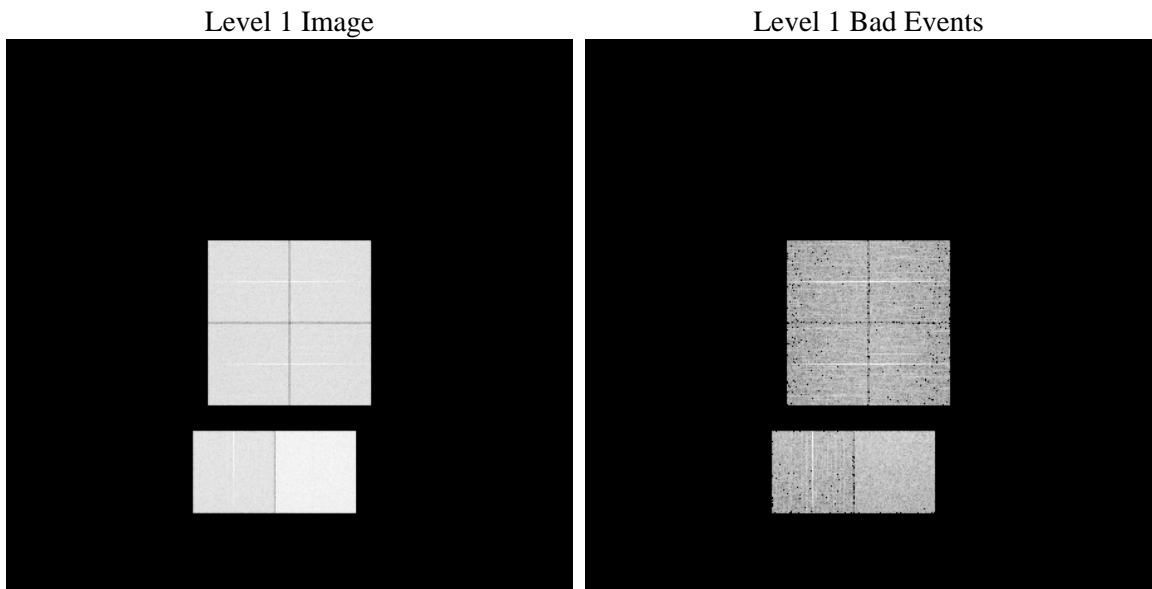
1 Front

seq_num	 	Sequence number
obs_id	60833	Observation id
title	ACIS-012367 diagnostics	Proposal title
observer	CHANDRA engineering request/realtime commanding	Principal investig
object	 	Source name
dtcycle	0	
cycle	P	events from which exps? Prim/Second/Both
ra_targ	0.0	Observer's specified target RA [deg]
dec_targ	0.0	Observer's specified target Dec [deg]
ra_nom	99.218512169643	Nominal RA [deg]
dec_nom	4.9781659009988	Nominal Dec [deg]
roll_nom	277.29295496138	Nominal Roll [deg]
revision	3	Processing version of data
ontime	7791.9999709725	Sum of GTIs [s]
livetime	7693.332975561	Livetime [s]
ontime0	4254.8385587931	Sum of GTIs [s]
ontime1	4368.3142459989	Sum of GTIs [s]
ontime2	4035.7119686007	Sum of GTIs [s]
ontime3	4197.76250422	Sum of GTIs [s]
ontime6	4512.1387403607	Sum of GTIs [s]
ontime7	7791.9999709725	Sum of GTIs [s]
l2events	1182414	Number of level 2 events

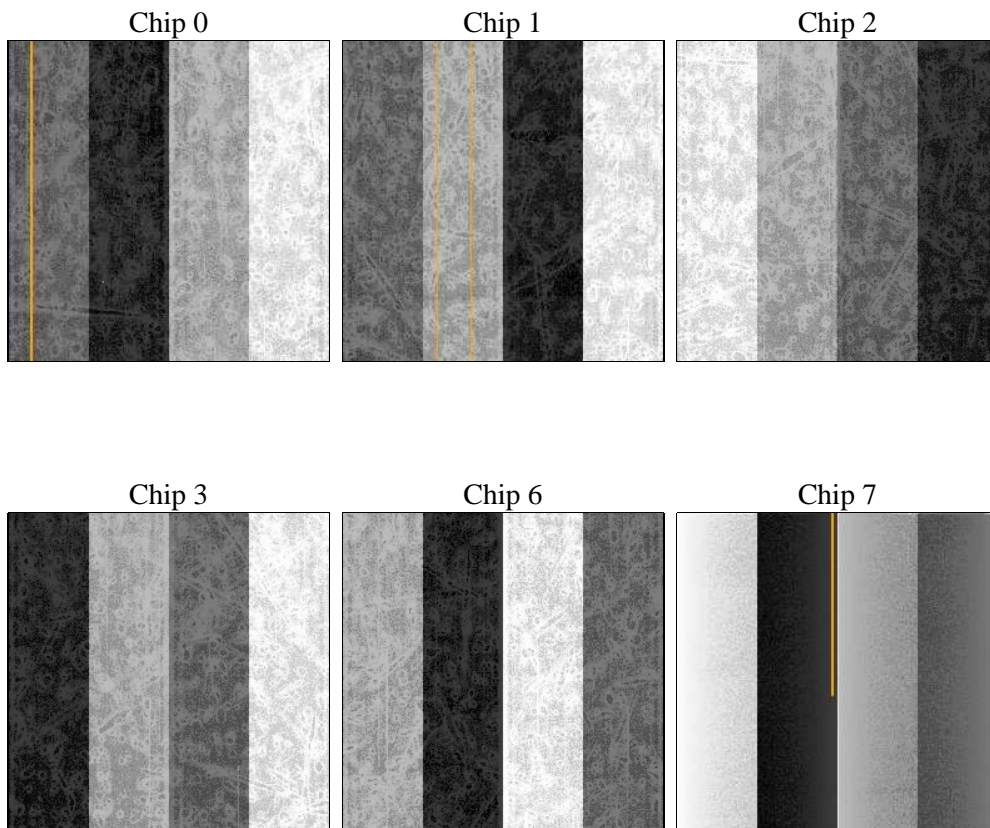
2 OBI

2.1 OBI

2.1.1 Images



2.1.2 Bias



2.1.3 Parameters

obi_num	0	Obi number	sched_exp_time	0.0	[s] Scheduled observation exposure time
ascdsver	8.4.5	Processing system revision	ontime	7791.9999709725	Sum of GTIs [s]
caldsver	4.5.2	 	ontime0	4254.8385587931	Sum of GTIs [s]
date	2012-10-23T11:38:18	Date and time of file creation	ontime1	4368.3142459989	Sum of GTIs [s]
revision	3	Processing version of data	ontime2	4035.7119686007	Sum of GTIs [s]
			ontime3	4197.76250422	Sum of GTIs [s]
			ontime6	4512.1387403607	Sum of GTIs [s]
			ontime7	7791.9999709725	Sum of GTIs [s]
			l1events	1425879	Number of level 1 events

2.1.4 Events

	ccd 0	ccd 1	ccd 2	ccd 3	ccd 6	ccd 7		ccd 0	ccd 1	ccd 2	ccd 3	ccd 6	ccd 7
level 1 events	204398	209334	197522	204889	227533	382203	grade 0 events	97578	99840	94970	98836	106965	85048
rejected events	28449	28428	28795	29879	31879	42262		47%	47%	48%	48%	47%	22%
rejected %	13%	13%	14%	14%	14%	11%	grade 1 events	544	497	548	582	528	234
								0%	0%	0%	0%	0%	0%
							grade 2 events	30398	32088	28385	29916	33737	74644
								14%	15%	14%	14%	14%	19%
							grade 3 events	11410	11533	10947	11302	12232	34506
								5%	5%	5%	5%	5%	9%
							grade 4 events	11114	11435	10928	11346	12057	33715
								5%	5%	5%	5%	5%	8%
							grade 5 events	1921	1987	1786	1933	2183	7918
								0%	0%	0%	0%	0%	2%
							grade 6 events	25449	26010	23632	23743	30807	112185
								12%	12%	11%	11%	13%	29%
							grade 7 events	25984	25944	26326	27231	29024	33953
								12%	12%	13%	13%	12%	8%

2.2 Compared Parameters

Parameter	Planned	Actual
Instrument	ACIS	ACIS
Detector	ACIS-012367	ACIS-012367
Grating	NONE	NONE
Data mode	FAINT	FAINT
Observation mode	SECONDARY	SECONDARY
[deg] Pointing RA	0	99.21851216964276
[deg] Pointing Dec	0	4.978165900998754
[deg] Pointing Roll	0.0	277.2929549613826
[mm] SIM focus pos	-0.782348	-0.6828225247311905
[mm] SIM defocus	0	0.8505141146731063
[mm] SIM translation stage pos	-233.592463	250.466033080201
[mm] SIM translation stage offset	0	-0.01005468664627074
[s] Observation start time (MET)	162655068.146983	162655067.12226
Observation start date	2003-02-26T13:57:48	2003-02-26T13:57:47
[s] Observation end time (MET)	162666662.947471	162666661.92274
Observation end date	2003-02-26T17:11:03	2003-02-26T17:11:01
Read mode	TIMED	TIMED

Parameter	Planned	Actual
Obspar format version number	7	7
Obspar file type	PREDICTED	ACTUAL
Obspar update status	NONE	UPDATED
On-chip summing requested	N	N
Subarray requested	NONE	NONE
Alternating exposures requested	N	N
[s] Primary exposure time	0.000000	3.2

2.3 Star Slots

2.4 FID Slots

A Summary

A.1 Status

V&V Scientist	Beth Sundheim
V&V Date (YYYY-MM-DD)	2012.11.30
V&V Edition	1
V&V Disposition and Status	OK
V&V Charge Time	7.7919999709725

A.2 Comments