

# V&V Reference Report

## L2 ASCDS Version : 7.6.8

Observation 60753 - L2 Version 001  
Chandra X-Ray Center

L2 Processing Date : Aug 1 2006

## Contents

<b>1</b>	<b>Front</b>	<b>2</b>
<b>2</b>	<b>OBI</b>	<b>3</b>
2.1	OBI . . . . .	3
2.1.1	Images . . . . .	3
2.1.2	Bias . . . . .	3
2.1.3	Parameters . . . . .	4
2.1.4	Events . . . . .	4
2.2	Compared Parameters . . . . .	5
2.3	Aspect . . . . .	6
2.4	Star Slots . . . . .	8
2.5	FID Slots . . . . .	8
<b>A</b>	<b>Summary</b>	<b>9</b>
A.1	Status . . . . .	9
A.2	Comments . . . . .	9

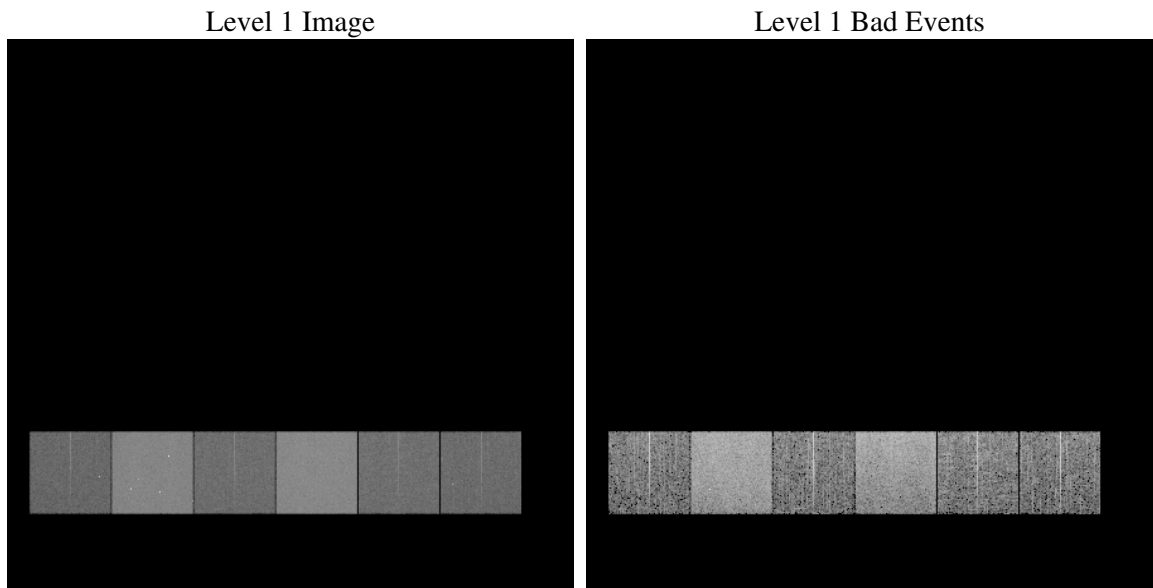
# 1 Front

seq_num	&#160
obs_id	60753
title	ACIS-456789 diagnostics
observer	CHANDRA engineering request/realtime commanding
object	&#160
dtcycle	0
cycle	P
ra_targ	0.0
dec_targ	0.0
ra_nom	170.02060272607
dec_nom	-30.022347516714
roll_nom	275.73549344238
revision	2
ontime	7790.3067704737
livetime	7691.6612153864
ontime4	3314.6303413212
ontime5	7790.347810477
ontime6	3658.1370800734
ontime7	7790.3067704737
ontime8	3739.244104743
ontime9	3538.0966561139
l2events	1151690

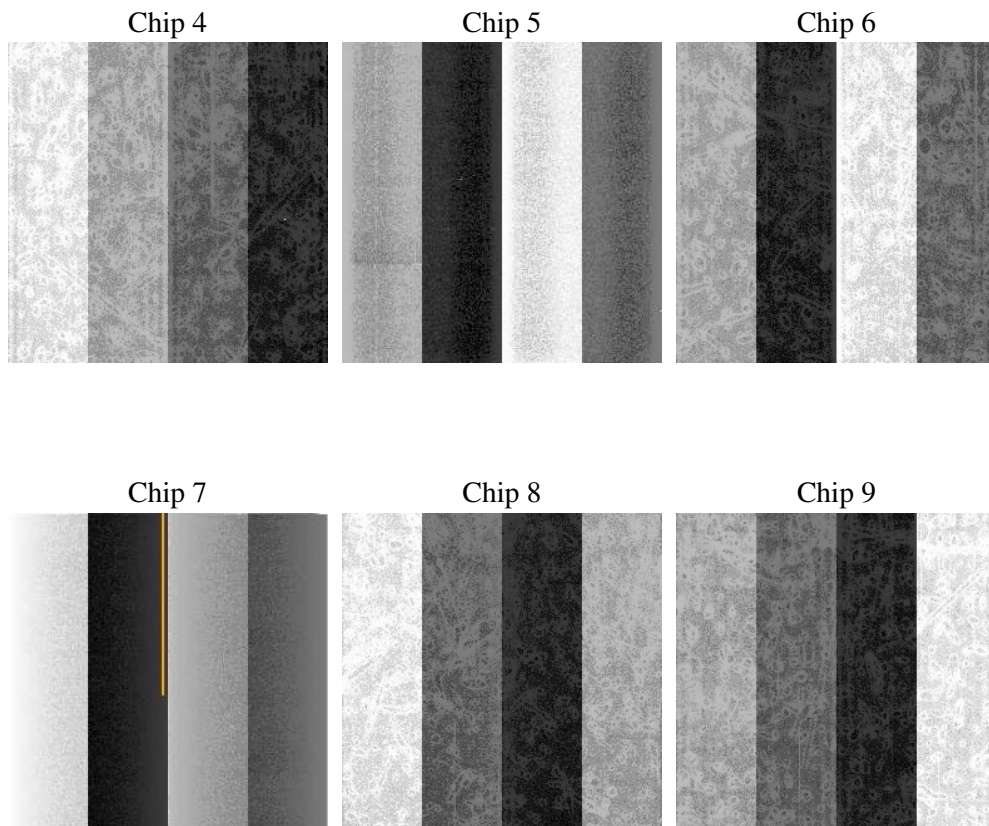
## 2 OBI

### 2.1 OBI

#### 2.1.1 Images



#### 2.1.2 Bias



### 2.1.3 Parameters

obi_num	2
ascdsver	7.6.8
caldsver	3.2.2
date	2006-08-01T10:50:47
revision	2

sched_exp_time	0.0
ontime	7791.3766590655
ontime4	3315.5771099031
ontime5	7791.3766590655
ontime6	3659.1248886585
ontime7	7791.3766590655
ontime8	3740.1498333514
ontime9	3539.2075847089
l1events	1421883

### 2.1.4 Events

	ccd 4	ccd 5	ccd 6	ccd 7	ccd 8	ccd 9
level 1 events	155984	347600	182260	376314	189358	170367
rejected events	24146	58104	25929	51467	27592	24900
rejected %	15%	16%	14%	13%	14%	14%

	ccd 4	ccd 5	ccd 6	ccd 7	ccd 8	ccd 9
grade 0 events	76607	36858	85030	60452	88099	80487
	49%	10%	46%	16%	46%	47%
grade 1 events	567	163	400	142	457	453
	0%	0%	0%	0%	0%	0%
grade 2 events	21071	137232	26946	96773	28399	24690
	13%	39%	14%	25%	14%	14%
grade 3 events	8693	9790	9644	24573	10378	9059
	5%	2%	5%	6%	5%	5%
grade 4 events	8546	9596	9768	24240	10371	9278
	5%	2%	5%	6%	5%	5%
grade 5 events	1585	6273	1791	6799	2074	1777
	1%	1%	0%	1%	1%	1%
grade 6 events	16921	96020	24943	118809	24519	21953
	10%	27%	13%	31%	12%	12%
grade 7 events	21994	51668	23738	44526	25061	22670
	14%	14%	13%	11%	13%	13%

## 2.2 Compared Parameters

Parameter	Planned	Actual	Parameter	Planned	Actual
Instrument	ACIS	ACIS	Obspar format version number	6	6
Detector	ACIS-456789	ACIS-456789	Obspar file type	PREDICTED	ACTUAL
Grating	NONE	NONE	Obspar update status	NONE	UPDATED
Data mode	FAINT	FAINT	On-chip summing requested	N	N
Observation mode	SECONDARY	SECONDARY	Subarray requested	NONE	NONE
Pointing RA	0	170.0206027260674	Alternating exposures requested	N	N
Pointing Dec	0	-30.02234751671445	Primary exposure time	0.000000	3.2
Pointing Roll	0.0	275.7354934423785			
SIM focus pos (mm)	-0.684267	-0.6828225247311905			
SIM defocus (mm)	0	0.8505141146731063			
SIM translation stage pos (mm)	-190.132523	250.4635187648994			
SIM translation stage offset (mm)	0	-0.007540371344731511			
Observation start time	168363332.337786	168363331.31305			
Observation start date	2003-05-03T15:35:32	2003-05-03T15:35:31			
Observation end time	168402817.389457	168402816.36472			
Observation end date	2003-05-04T02:33:37	2003-05-04T02:33:36			
Read mode	TIMED	TIMED			

## 2.3 Aspect



## **2.4 Star Slots**

## **2.5 FID Slots**



## A Summary

### A.1 Status

V&V Scientist	Jen Lauer
V&V Date (YYYY-MM-DD)	2006.08.01
V&V Edition	1
V&V Disposition and Status	OK
V&V Charge Time	7.79030677

### A.2 Comments