

# V&V Reference Report

## L2 ASCDS Version : 8.4.5

Observation 60573 - L2 Version 4  
Chandra X-Ray Center

L2 Processing Date : Nov 2 2012

## Contents

<b>1</b>	<b>Front</b>	<b>2</b>
<b>2</b>	<b>OBI</b>	<b>3</b>
2.1	OBI . . . . .	3
2.1.1	Images . . . . .	3
2.1.2	Bias . . . . .	3
2.1.3	Parameters . . . . .	4
2.1.4	Events . . . . .	4
2.2	Compared Parameters . . . . .	5
2.3	Star Slots . . . . .	6
2.4	FID Slots . . . . .	6
<b>A</b>	<b>Summary</b>	<b>7</b>
A.1	Status . . . . .	7
A.2	Comments . . . . .	7

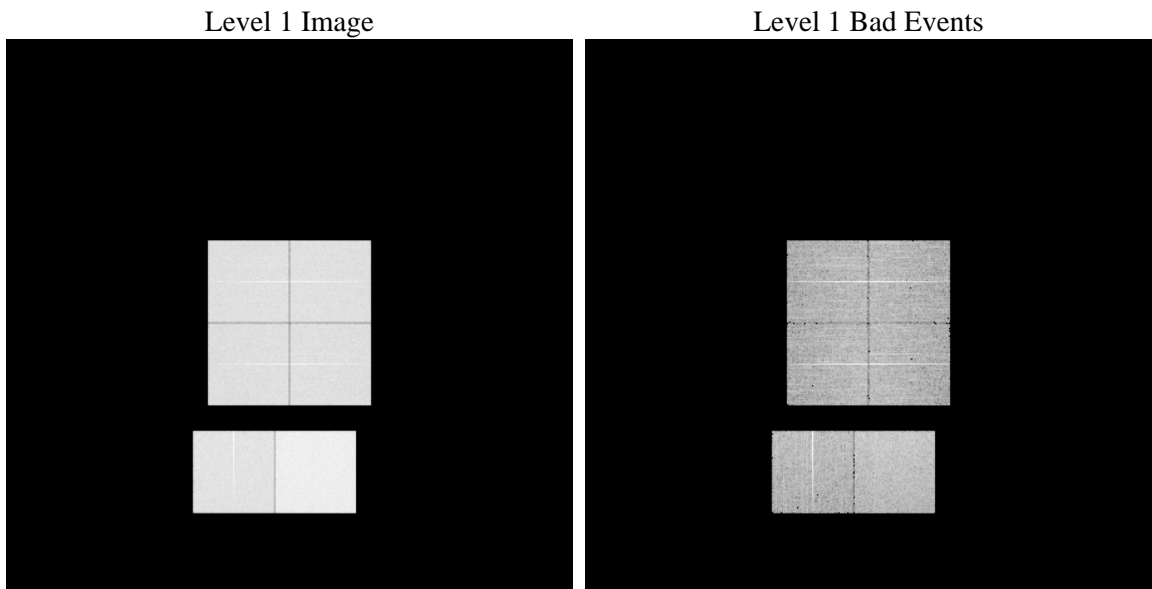
# 1 Front

seq_num	&#160	Sequence number
obs_id	60573	Observation id
title	ACIS-012367 diagnostics	Proposal title
observer	CHANDRA engineering request/realtime commanding	Principal investig
object	&#160	Source name
dtcycle	0	&#160
cycle	P	events from which exps? Prim/Second/Both
ra_targ	0.0	Observer's specified target RA [deg]
dec_targ	0.0	Observer's specified target Dec [deg]
ra_nom	331.97884615817	Nominal RA [deg]
dec_nom	19.979370832224	Nominal Dec [deg]
roll_nom	193.13796653937	Nominal Roll [deg]
revision	4	Processing version of data
ontime	12035.199955165	Sum of GTIs [s]
livetime	11882.803006606	Livetime [s]
ontime0	7595.0668450892	Sum of GTIs [s]
ontime1	7669.6098581851	Sum of GTIs [s]
ontime2	7232.0762633681	Sum of GTIs [s]
ontime3	7280.6921916902	Sum of GTIs [s]
ontime6	8069.9313627481	Sum of GTIs [s]
ontime7	12035.199955165	Sum of GTIs [s]
l2events	1787801	Number of level 2 events

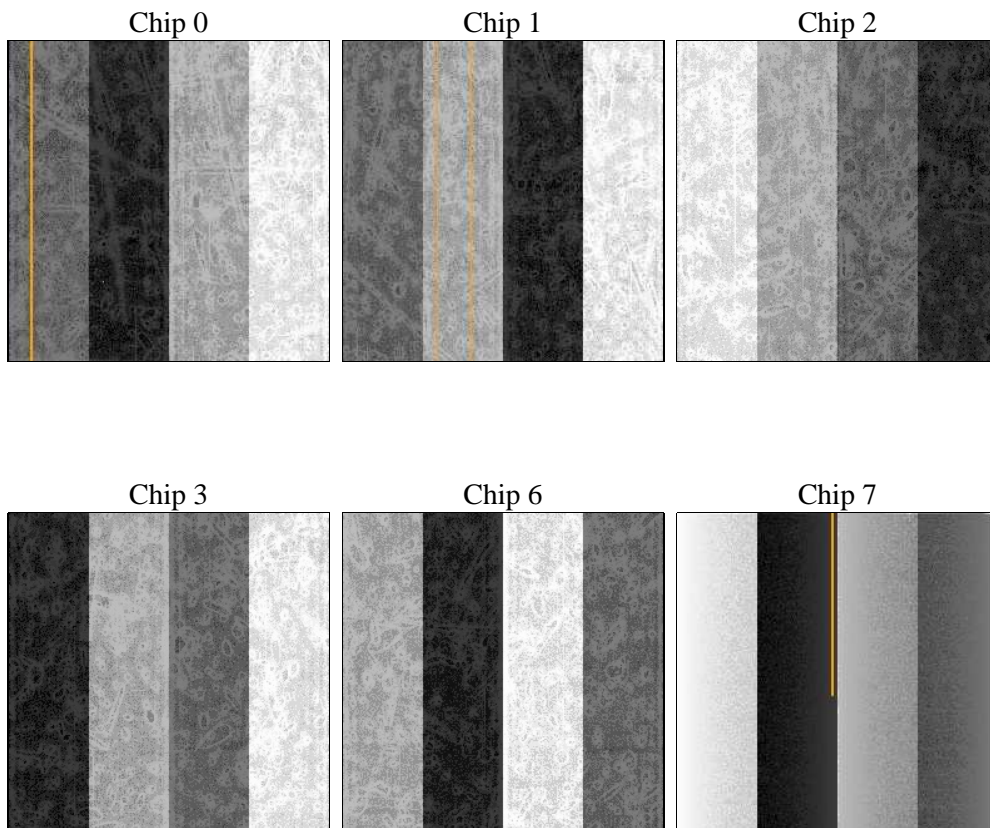
## 2 OBI

### 2.1 OBI

#### 2.1.1 Images



#### 2.1.2 Bias



### 2.1.3 Parameters

obi_num	0	Obi number	sched_exp_time	10800	[s] Scheduled observation exposure time
ascdsver	8.4.5	Processing system revision	ontime	12035.199955165	Sum of GTIs [s]
caldbver	4.5.2	&#160	ontime0	7595.0668450892	Sum of GTIs [s]
date	2012-11-02T20:50:04	Date and time of file creation	ontime1	7669.6098581851	Sum of GTIs [s]
revision	4	Processing version of data	ontime2	7232.0762633681	Sum of GTIs [s]
			ontime3	7280.6921916902	Sum of GTIs [s]
			ontime6	8069.9313627481	Sum of GTIs [s]
			ontime7	12035.199955165	Sum of GTIs [s]
			l1events	2207123	Number of level 1 events

### 2.1.4 Events

	ccd 0	ccd 1	ccd 2	ccd 3	ccd 6	ccd 7		ccd 0	ccd 1	ccd 2	ccd 3	ccd 6	ccd 7
level 1 events	328545	332621	318774	323135	366378	537670	grade 0 events	155146	156125	151482	153963	171615	117924
rejected events	51191	52107	52675	53137	55891	69981		47%	46%	47%	47%	46%	21%
rejected %	15%	15%	16%	16%	15%	13%	grade 1 events	853	700	886	854	828	330
								0%	0%	0%	0%	0%	0%
							grade 2 events	48726	50283	45465	47108	54390	104264
								14%	15%	14%	14%	14%	19%
							grade 3 events	18148	18077	17758	17777	19627	47627
								5%	5%	5%	5%	5%	8%
							grade 4 events	18175	18179	17375	17512	19599	47537
								5%	5%	5%	5%	5%	8%
							grade 5 events	3255	3337	3027	3341	3724	11893
								0%	1%	0%	1%	1%	2%
							grade 6 events	40822	41592	37868	37631	49407	157060
								12%	12%	11%	11%	13%	29%
							grade 7 events	43420	44328	44913	44949	47188	51035
								13%	13%	14%	13%	12%	9%

## 2.2 Compared Parameters

Parameter	Planned	Actual
Instrument	ACIS	ACIS
Detector	ACIS-012367	ACIS-012367
Grating	NONE	NONE
Data mode	FAINT	FAINT
Observation mode	SECONDARY	SECONDARY
[deg] Pointing RA	331.9788749490438	331.978846158173
[deg] Pointing Dec	19.97937711422452	19.97937083222422
[deg] Pointing Roll	193.1379566945103	193.1379665393673
[mm] SIM focus pos	-0.68282252473119	-0.68282252473119
[mm] SIM defocus	0.8505140384245534	0.8505140384245534
[mm] SIM translation stage pos	250.4660330802	250.4660330802
[mm] SIM translation stage offset	-0.01005726120527584	-0.01005726120527584
[s] Observation start time (MET)	178643935.175172	178643935.175172
Observation start date	2003-08-30T15:43:00	2003-08-30T15:18:55
[s] Observation end time (MET)	178657674.84492	178657674.84492
Observation end date	2003-08-30T18:43:00	2003-08-30T19:07:54
Read mode	TIMED	TIMED

Parameter	Planned	Actual
Obspar format version number	7	7
Obspar file type	PREDICTED	ACTUAL
Obspar update status	OVERRIDE	OVERRIDE
Number of optional ACIS chips dropped	0	0
On-chip summing requested	N	N
Subarray requested	NONE	NONE
Alternating exposures requested	N	N
[s] Primary exposure time	3.2	3.2

## **2.3 Star Slots**

## **2.4 FID Slots**

## **A Summary**

### **A.1 Status**

V&V Scientist	Jen Lauer
V&V Date (YYYY-MM-DD)	2012.12.06
V&V Edition	1
V&V Disposition and Status	OK
V&V Charge Time	12.035199955165

### **A.2 Comments**