

# V&V Reference Report

## L2 ASCDS Version : 7.6.8

Observation 60483 - L2 Version 001  
Chandra X-Ray Center

L2 Processing Date : Jun 28 2006

## Contents

<b>1</b>	<b>Front</b>	<b>2</b>
<b>2</b>	<b>OBI</b>	<b>3</b>
2.1	OBI . . . . .	3
2.1.1	Images . . . . .	3
2.1.2	Bias . . . . .	3
2.1.3	Parameters . . . . .	4
2.1.4	Events . . . . .	4
2.2	Compared Parameters . . . . .	5
2.3	Aspect . . . . .	6
2.4	Star Slots . . . . .	8
2.5	FID Slots . . . . .	8
<b>A</b>	<b>Summary</b>	<b>9</b>
A.1	Status . . . . .	9
A.2	Comments . . . . .	9

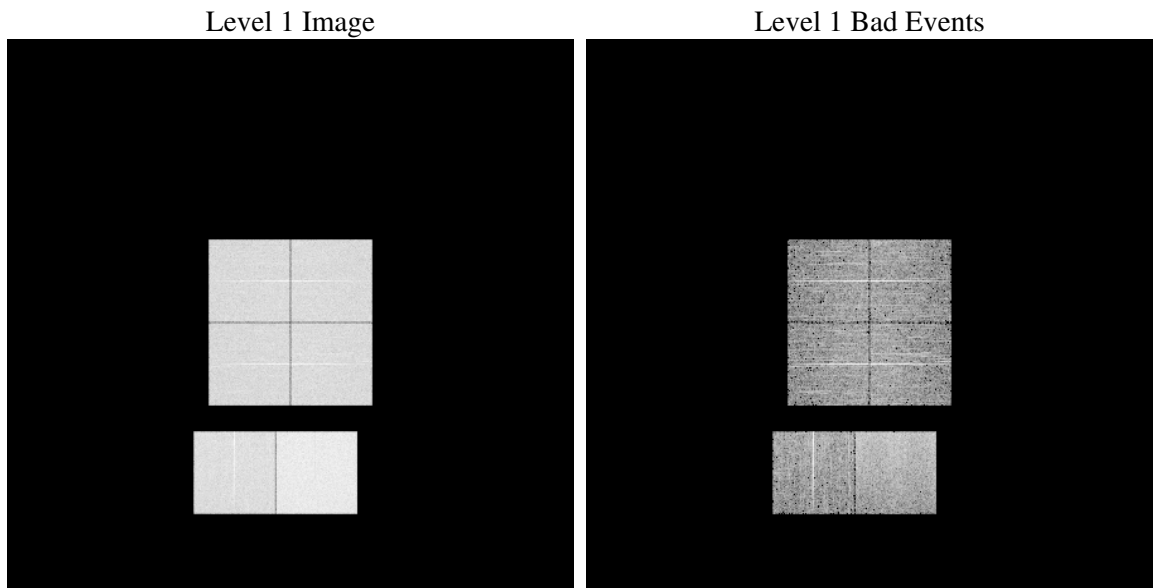
# 1 Front

seq_num	&#160
obs_id	60483
title	ACIS-012367 diagnostics
observer	CHANDRA engineering request/realtime commanding
object	&#160
dtcycle	0
cycle	P
ra_targ	0.0
dec_targ	0.0
ra_nom	164.9861507988
dec_nom	-25.974252548517
roll_nom	82.849384639057
revision	2
ontime	7807.9999709129
livetime	7709.1303738681
ontime0	5318.9388125539
ontime1	5344.8656289876
ontime2	5121.2382723093
ontime3	5299.4927923977
ontime6	5657.4149740934
ontime7	7807.9999709129
l2events	1166649

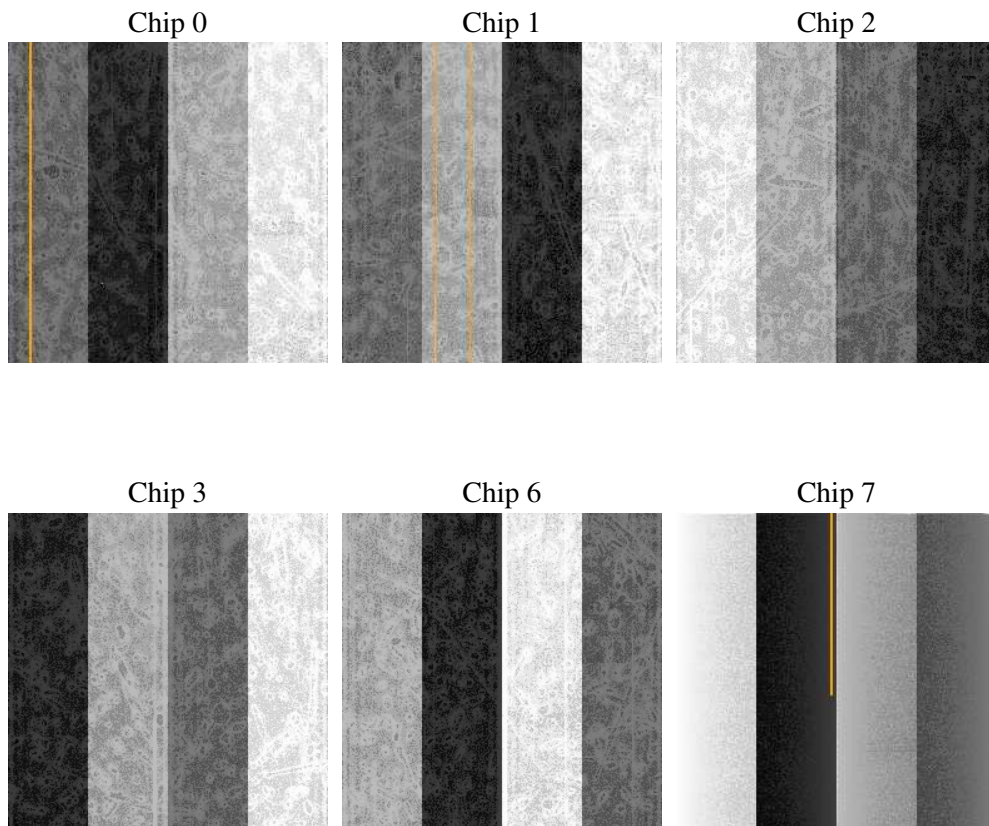
## 2 OBI

### 2.1 OBI

#### 2.1.1 Images



#### 2.1.2 Bias



### 2.1.3 Parameters

obi_num	0
ascdsver	7.6.8
caldbver	3.2.2
date	2006-06-28T05:28:26
revision	2

sched_exp_time	0.0
ontime	7810.8101983964
ontime0	5321.7490400374
ontime1	5347.6758564711
ontime2	5124.0484997928
ontime3	5302.3030198812
ontime6	5658.8094286621
ontime7	7810.8101983964
l1events	1420547

### 2.1.4 Events

	ccd 0	ccd 1	ccd 2	ccd 3	ccd 6	ccd 7
level 1 events	213456	215518	210497	218895	238738	323443
rejected events	28725	29255	30006	31219	32402	46627
rejected %	13%	13%	14%	14%	13%	14%

	ccd 0	ccd 1	ccd 2	ccd 3	ccd 6	ccd 7
grade 0 events	101955	102377	101714	105752	113012	50394
	47%	47%	48%	48%	47%	15%
grade 1 events	468	404	526	547	459	122
	0%	0%	0%	0%	0%	0%
grade 2 events	32610	33119	30669	31883	35613	83129
	15%	15%	14%	14%	14%	25%
grade 3 events	11848	11642	11530	12202	12791	20647
	5%	5%	5%	5%	5%	6%
grade 4 events	11839	11818	11727	12269	12768	20436
	5%	5%	5%	5%	5%	6%
grade 5 events	2036	2065	1954	2171	2404	6071
	0%	0%	0%	0%	1%	1%
grade 6 events	26479	27307	24851	25570	32152	102210
	12%	12%	11%	11%	13%	31%
grade 7 events	26221	26786	27526	28501	29539	40434
	12%	12%	13%	13%	12%	12%

## 2.2 Compared Parameters

Parameter	Planned	Actual	Parameter	Planned	Actual
Instrument	ACIS	ACIS	Obspar format version number	6	6
Detector	ACIS-012367	ACIS-012367	Obspar file type	PREDICTED	ACTUAL
Grating	NONE	NONE	Obspar update status	NONE	UPDATED
Data mode	FAINT	FAINT	On-chip summing requested	N	N
Observation mode	SECONDARY	SECONDARY	Subarray requested	NONE	NONE
Pointing RA	0	164.9861507987995	Alternating exposures requested	N	N
Pointing Dec	0	-25.97425254851685	Primary exposure time	0.000000	3.2
Pointing Roll	0.0	82.84938463905691			
SIM focus pos (mm)	-0.782348	-0.6828225247311905			
SIM defocus (mm)	0	0.8505141146731063			
SIM translation stage pos (mm)	-233.592463	250.466033080201			
SIM translation stage offset (mm)	0	-0.01005468664627074			
Observation start time	185277309.060491	185277308.03576			
Observation start date	2003-11-15T09:55:09	2003-11-15T09:55:08			
Observation end time	185291784.111119	185291783.08639			
Observation end date	2003-11-15T13:56:24	2003-11-15T13:56:23			
Read mode	TIMED	TIMED			

## 2.3 Aspect



## **2.4 Star Slots**

## **2.5 FID Slots**



## A Summary

### A.1 Status

V&V Scientist	Beth Sundheim
V&V Date (YYYY-MM-DD)	2006.06.28
V&V Edition	1
V&V Disposition and Status	OK
V&V Charge Time	7.80799997

### A.2 Comments