

# V&V Reference Report

## L2 ASCDS Version : 7.6.9

Observation 603 - L2 Version 001  
Chandra X-Ray Center

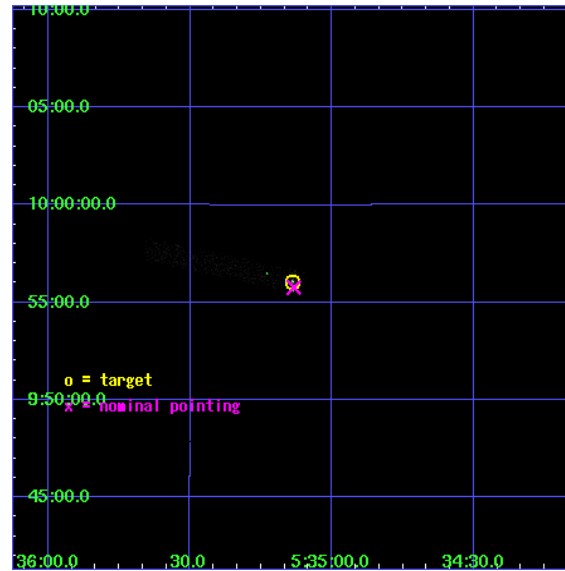
L2 Processing Date : Nov 6 2006

## Contents

<b>1</b>	<b>Front</b>	<b>2</b>
<b>2</b>	<b>OBI</b>	<b>3</b>
2.1	OBI . . . . .	3
2.1.1	Images . . . . .	3
2.1.2	Bias . . . . .	3
2.1.3	Parameters . . . . .	4
2.1.4	Events . . . . .	4
2.2	Compared Parameters . . . . .	5
2.3	Aspect . . . . .	6
2.4	Star Slots . . . . .	9
2.4.1	Slot 3 . . . . .	9
2.4.2	Slot 4 . . . . .	10
2.4.3	Slot 5 . . . . .	11
2.4.4	Slot 6 . . . . .	12
2.4.5	Slot 7 . . . . .	13
2.5	FID Slots . . . . .	14
2.5.1	Slot 0 . . . . .	14
2.5.2	Slot 1 . . . . .	15
2.5.3	Slot 2 . . . . .	16
<b>3</b>	<b>Point Sources</b>	<b>17</b>
<b>A</b>	<b>Summary</b>	<b>18</b>
A.1	Status . . . . .	18
A.2	Comments . . . . .	18

# 1 Front

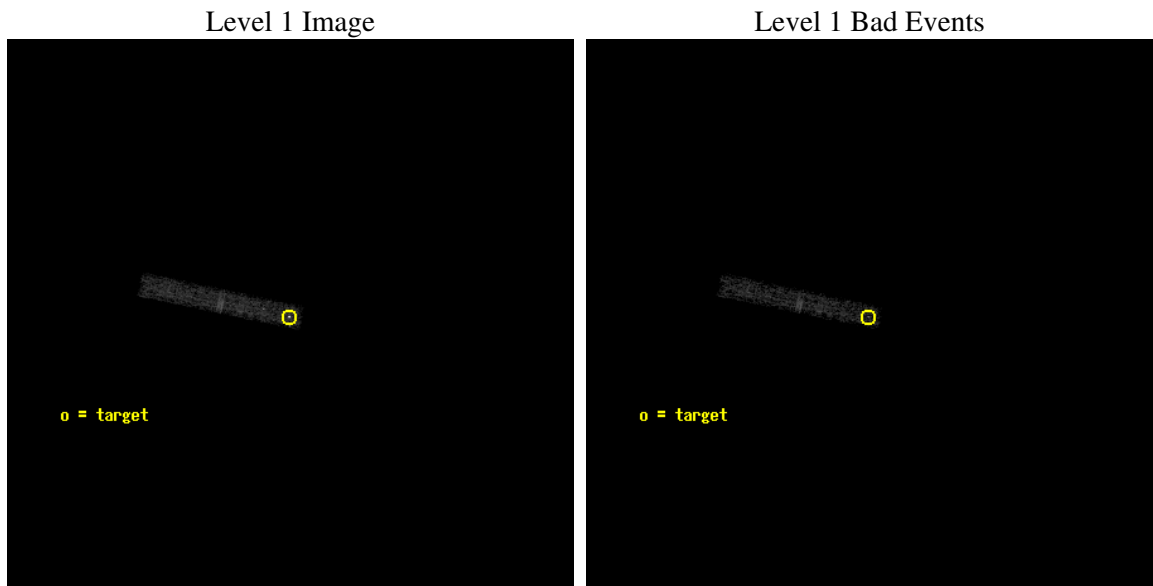
seq_num	200077
obs_id	603
title	OBSERVATION OF MASSIVE BINARY
observer	Professor Gordon Garmire
object	LAMBDA ORIONIS
dtcycle	0
cycle	P
ra_targ	83.7845
dec_targ	9.934167
ra_nom	83.783535012351
dec_nom	9.9294276655154
roll_nom	282.02949077248
revision	2
ontime	10234.5
livetime	9458.1731480112
ontime3	10234.5
l2events	4658



## 2 OBI

### 2.1 OBI

#### 2.1.1 Images



#### 2.1.2 Bias

Chip 3



### 2.1.3 Parameters

obi_num	0
ascdsver	7.6.9
caldbver	3.2.3
date	2006-11-06T14:21:51
revision	2

sched_exp_time	10070.000000
ontime	10839.599127218
ontime3	10839.599127218
l1events	17223

### 2.1.4 Events

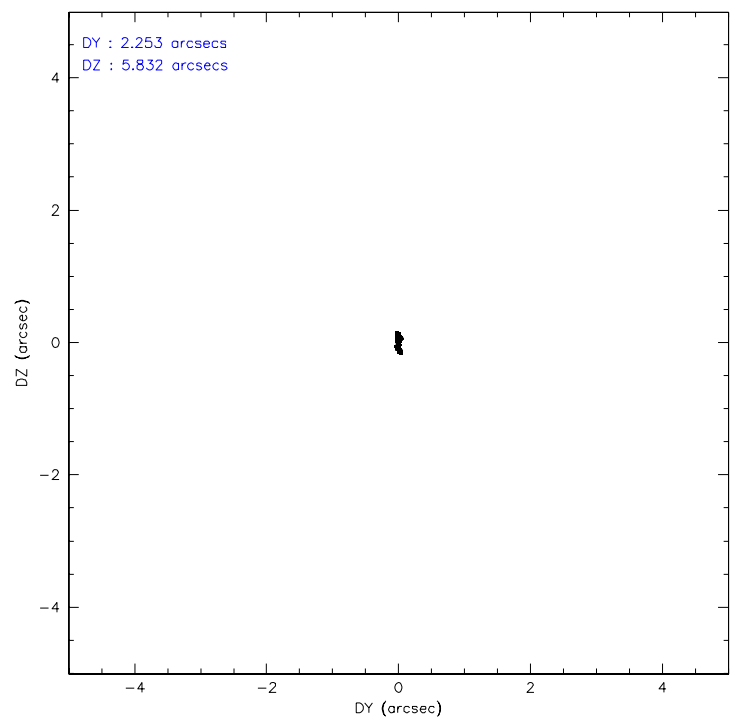
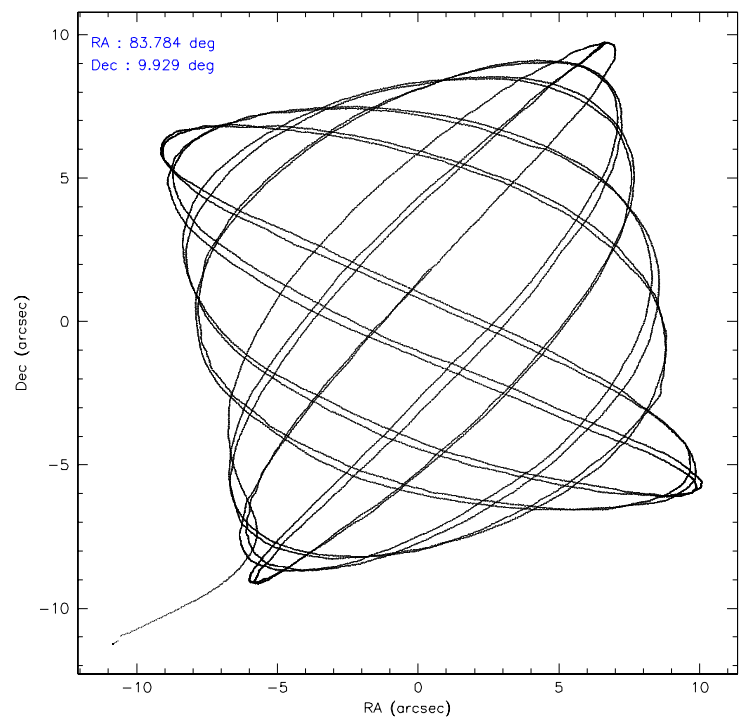
	<b>ccd 3</b>
level 1 events	17223
rejected events	12281
rejected %	71%

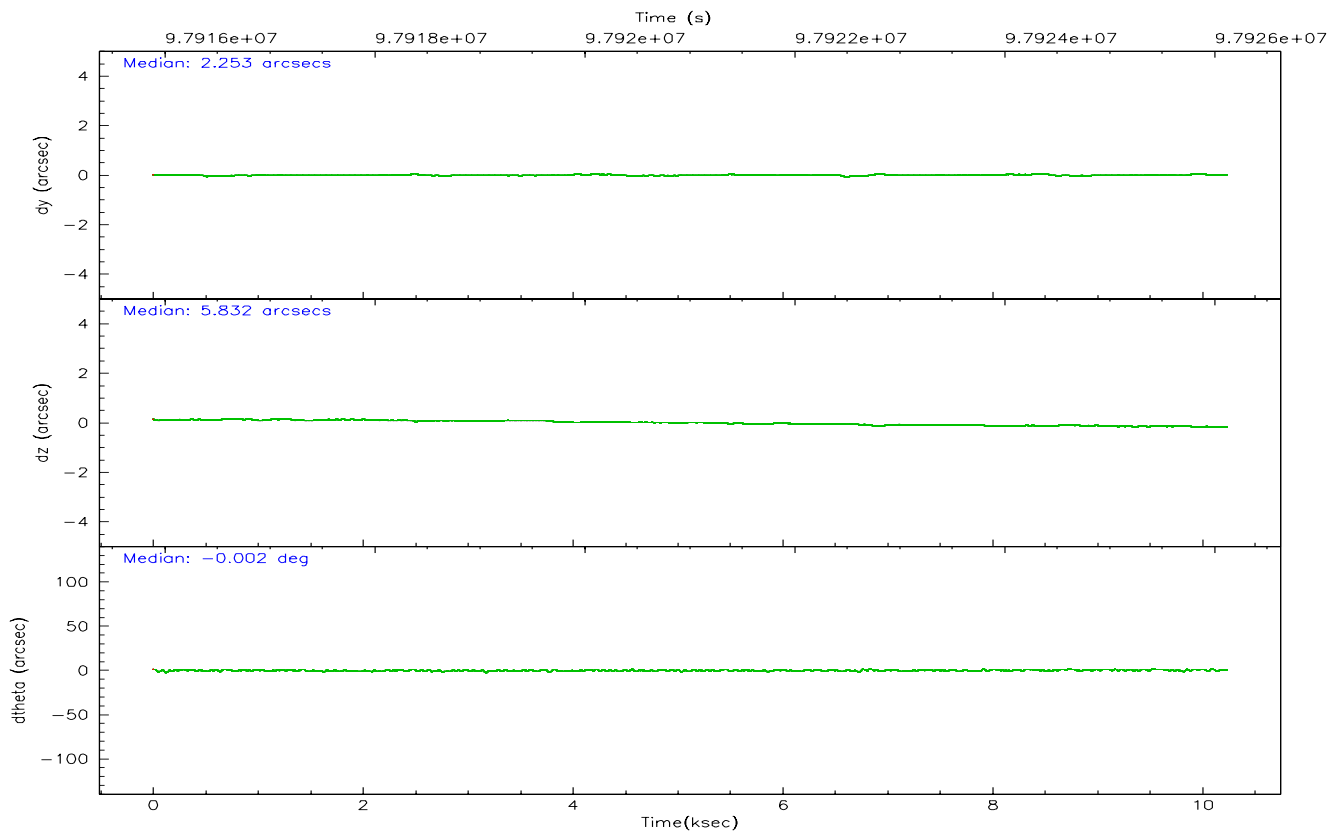
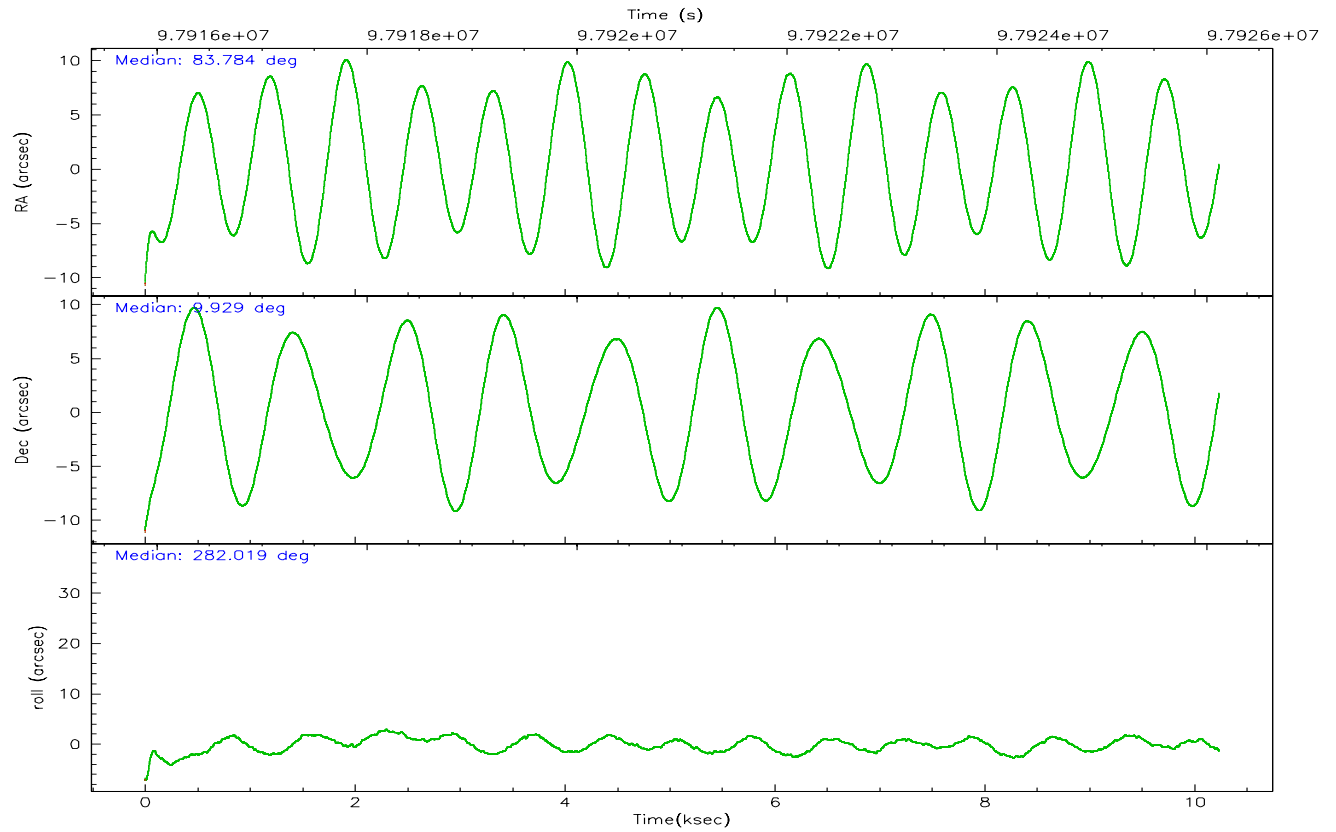
	<b>ccd 3</b>
grade 0 events	3833
	22%
grade 1 events	75
	0%
grade 2 events	417
	2%
grade 3 events	346
	2%
grade 4 events	290
	1%
grade 5 events	358
	2%
grade 6 events	171
	0%
grade 7 events	11733
	68%

## 2.2 Compared Parameters

Parameter	Planned	Actual	Parameter	Planned	Actual
Instrument	ACIS	ACIS	Obspar format version number	6	6
Detector	ACIS-3	ACIS-3	Obspar file type	PREDICTED	ACTUAL
Grating	NONE	NONE	Obspar update status	NONE	UPDATED
Data mode	VFAINT	VFAINT	Number of optional ACIS chips dropped	0	0
Observation mode	POINTING	POINTING	On-chip summing requested	N	N
Pointing RA	83.764915	83.78353501235077	Subarray requested	CUSTOM	1/8
Pointing Dec	9.949876	9.929427665515371	Subarray start row	896	896
Pointing Roll	281.824026	282.0294907724766	Subarray row count	128	128
SIM focus pos (mm)	-0.782348	-0.7809083437167272	Alternating exposures requested	N	N
SIM defocus (mm)	0	0.001439871863259334	Primary exposure time	0.000000	0.5
SIM translation stage pos (mm)	-233.592463	-233.5874344608287			
SIM translation stage offset (mm)	0	-0.005018542100998502			
Observation start time	97916050.184000	97915087.687544			
Observation start date	2001-02-07T06:53:06	2001-02-07T06:38:07			
Observation end time	97926120.184000	97927037.138004			
Observation end date	2001-02-07T09:40:56	2001-02-07T09:57:17			
Read mode	TIMED	TIMED			

## 2.3 Aspect





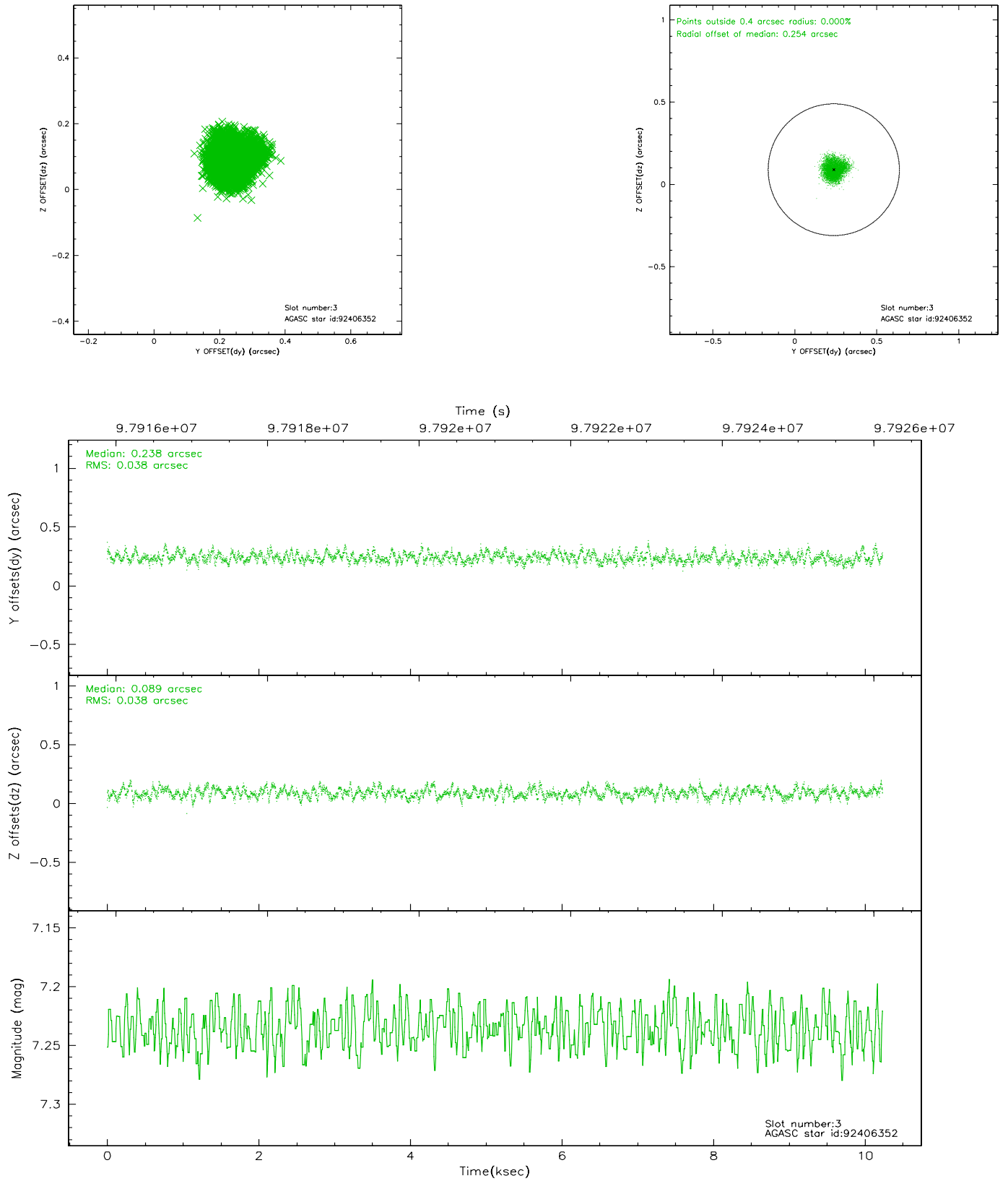
### Slot Statistics

slot	status	id	mag	n_pts	med_dy	med_dz	dr1	dr2	ra	dec	mean_y	mean_z
0	FID	ACIS-I-2	7.15	2497	-0.023	-0.041	0.013	0.023	0.000000	0.000000	-756.63	-835.60
1	FID	ACIS-I-4	7.18	2497	-0.049	0.034	0.010	0.025	0.000000	0.000000	2157.16	1070.40
2	FID	ACIS-I-5	7.23	2497	-0.028	0.076	0.011	0.018	0.000000	0.000000	-1809.80	1068.87
3	GUIDE	92406352	7.24	4993	0.238	0.089	0.058	0.090	83.803317	9.613262	1214.49	-114.71
4	GUIDE	92405920	8.14	4988	0.043	0.083	0.058	0.095	84.148023	9.865405	575.59	1267.86
5	GUIDE	92410104	6.79	4993	-0.110	-0.001	0.034	0.056	84.249463	10.459117	-1444.31	2054.83
6	GUIDE	92407600	8.83	4990	-0.043	-0.095	0.085	0.135	83.136466	9.669683	528.56	-2388.94
7	GUIDE	92411856	8.72	4992	-0.131	-0.071	0.090	0.139	83.145771	10.083006	-920.22	-2050.13

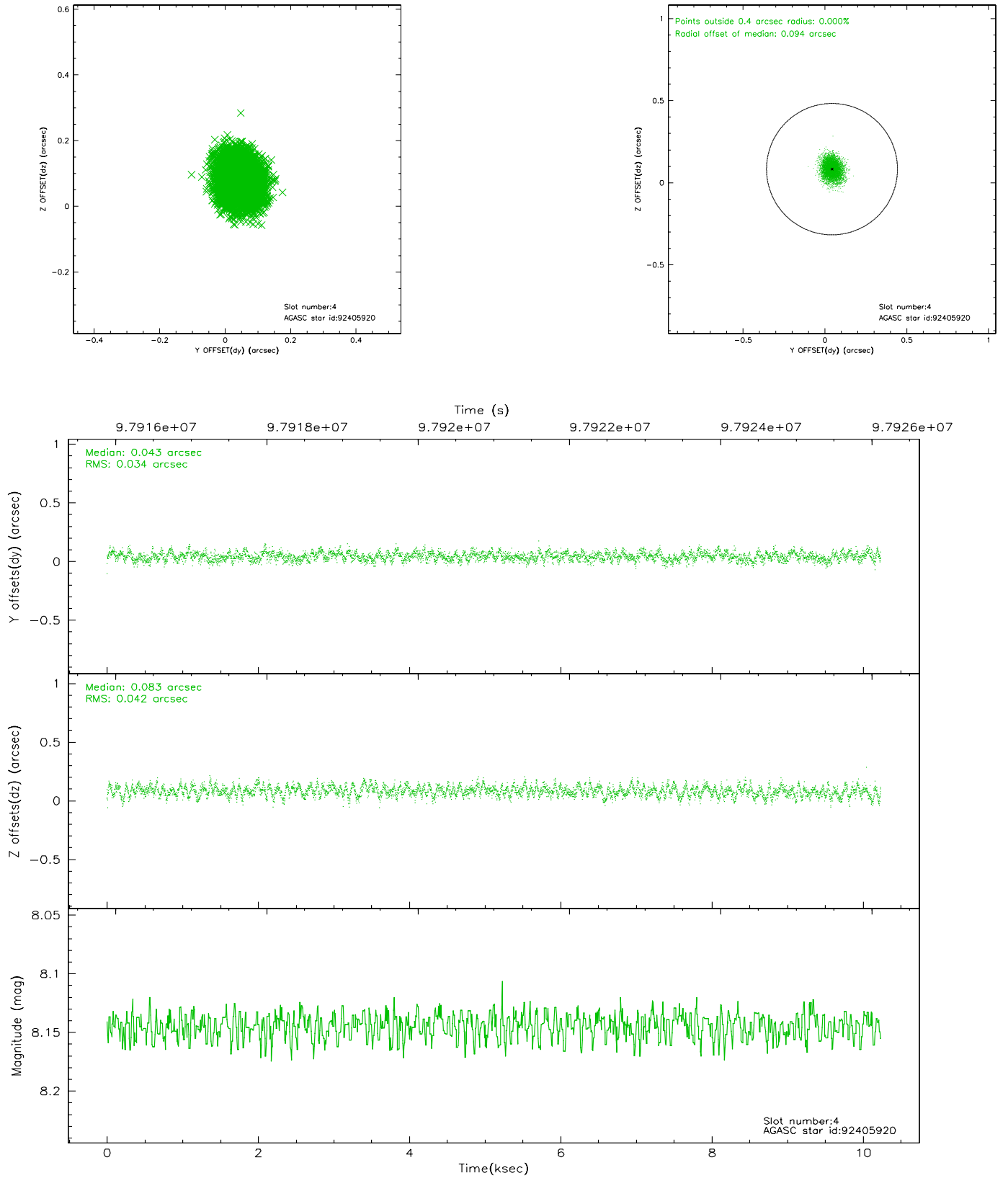


## 2.4 Star Slots

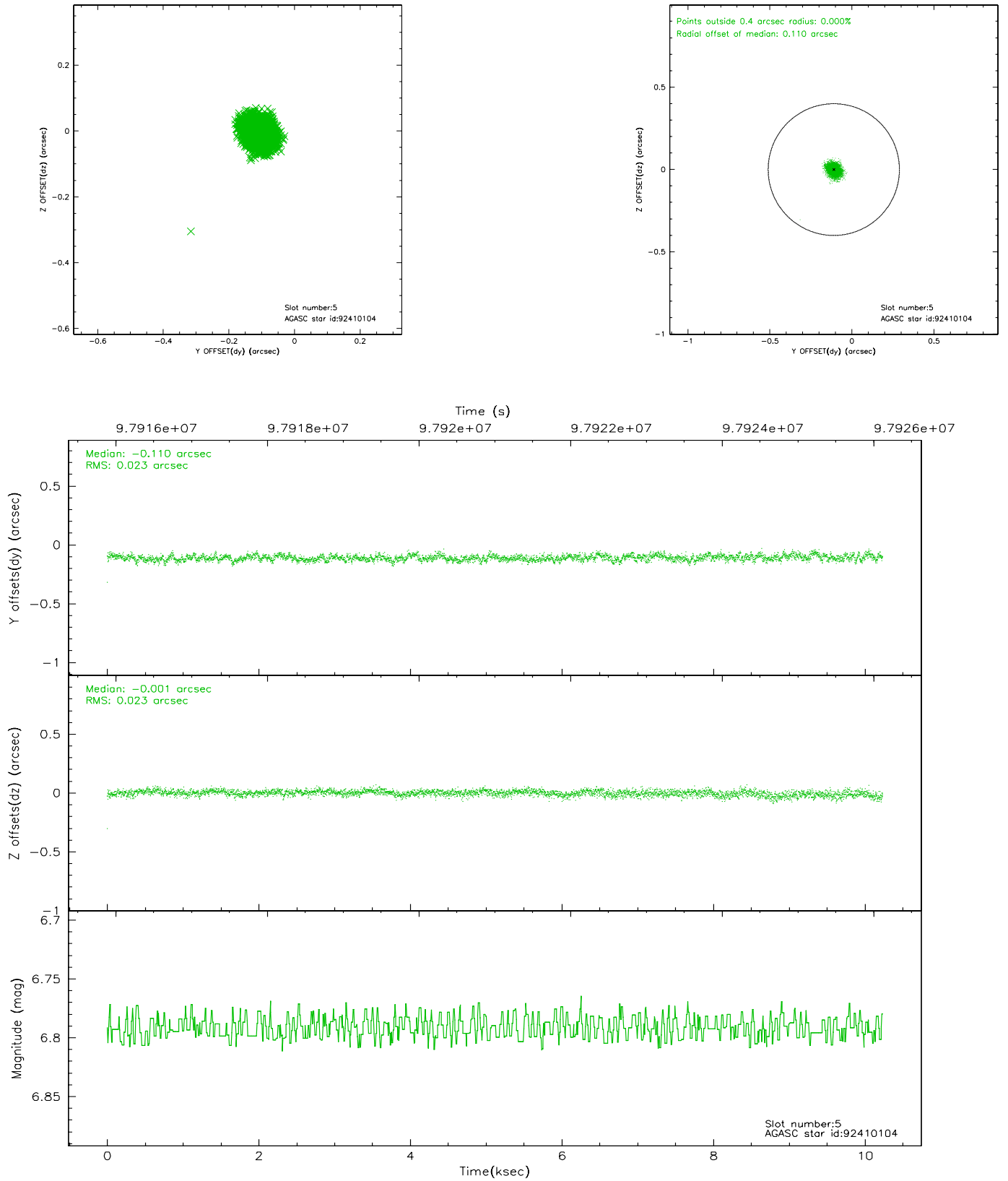
### 2.4.1 Slot 3



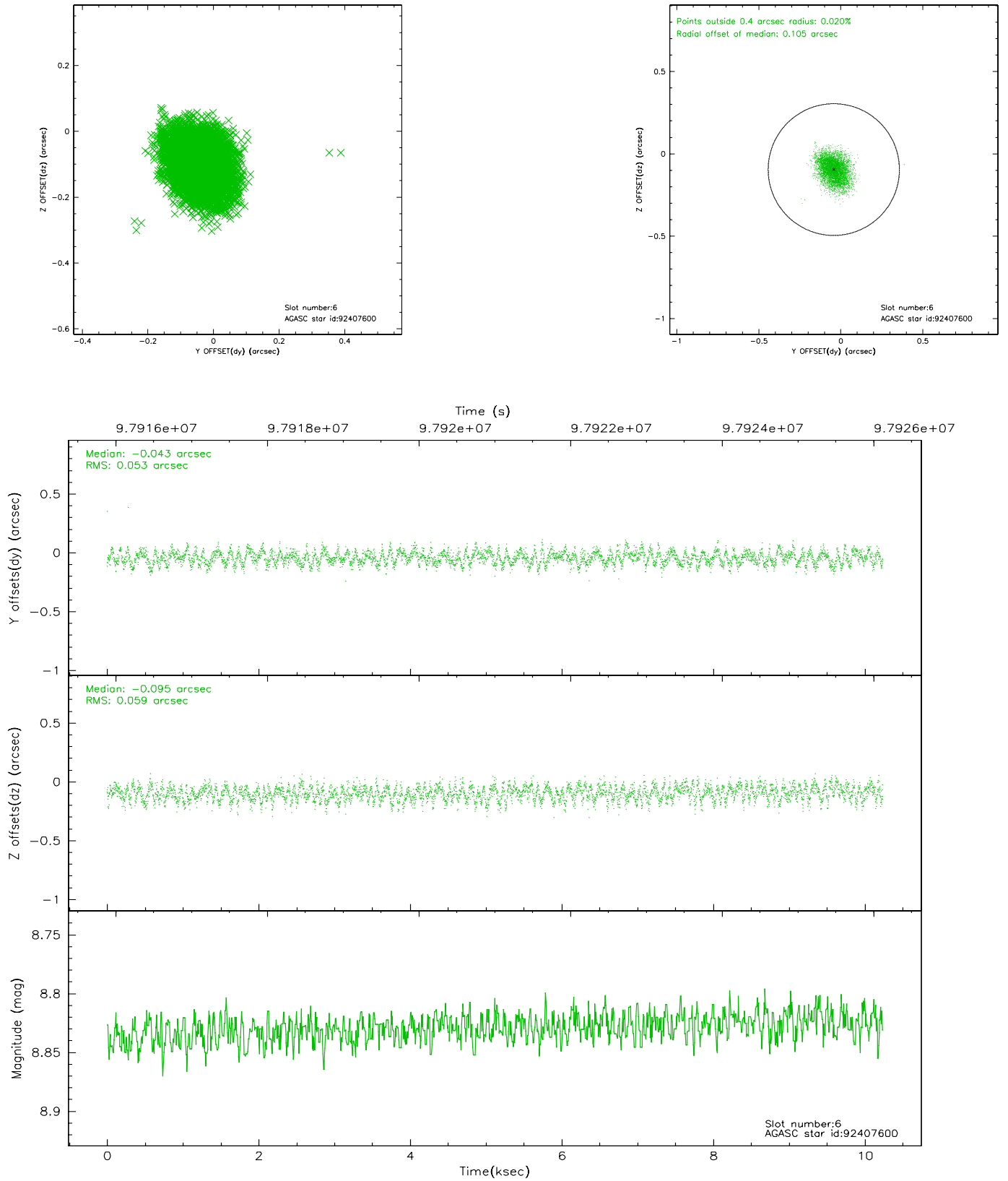
## 2.4.2 Slot 4



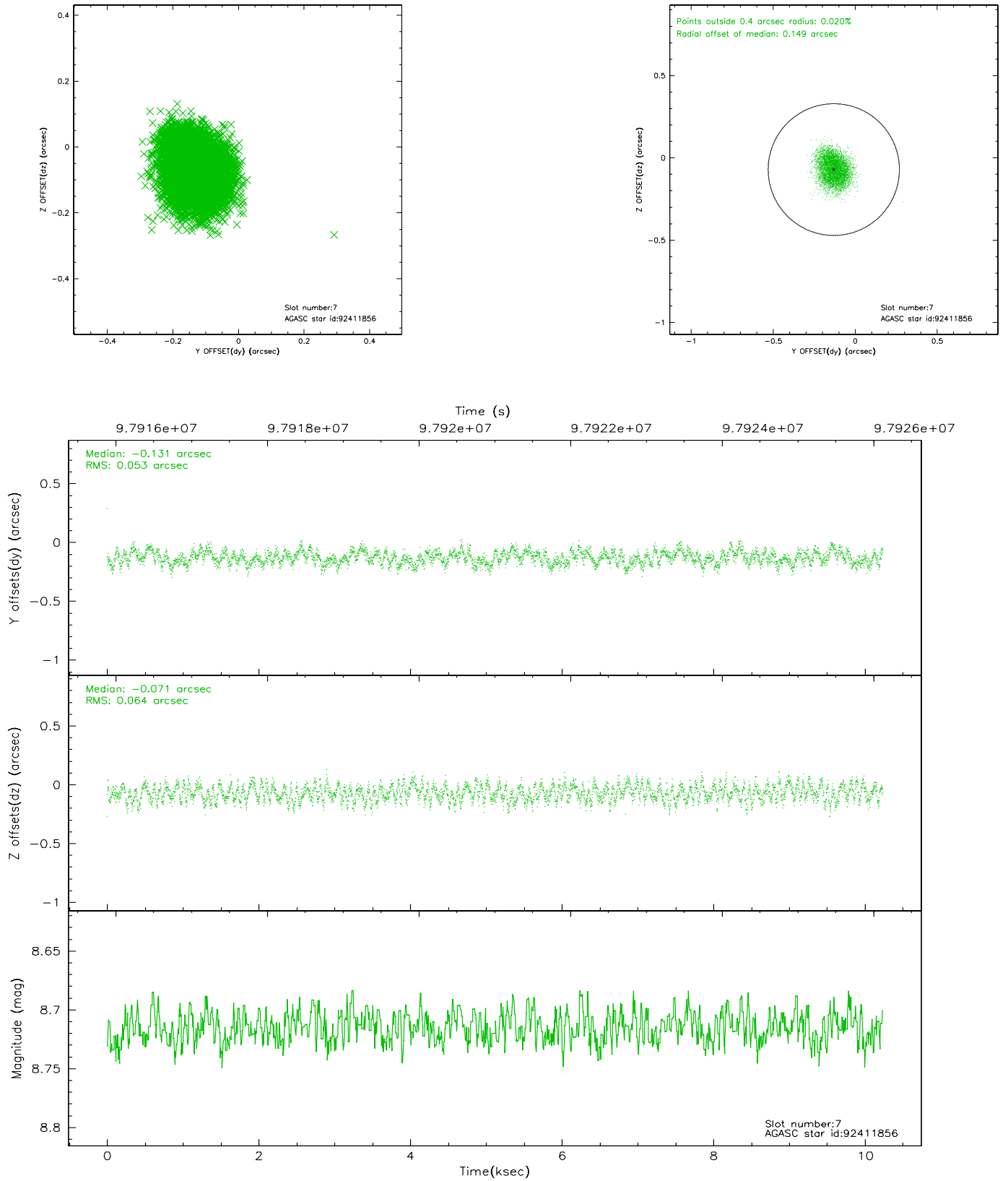
### 2.4.3 Slot 5



## 2.4.4 Slot 6

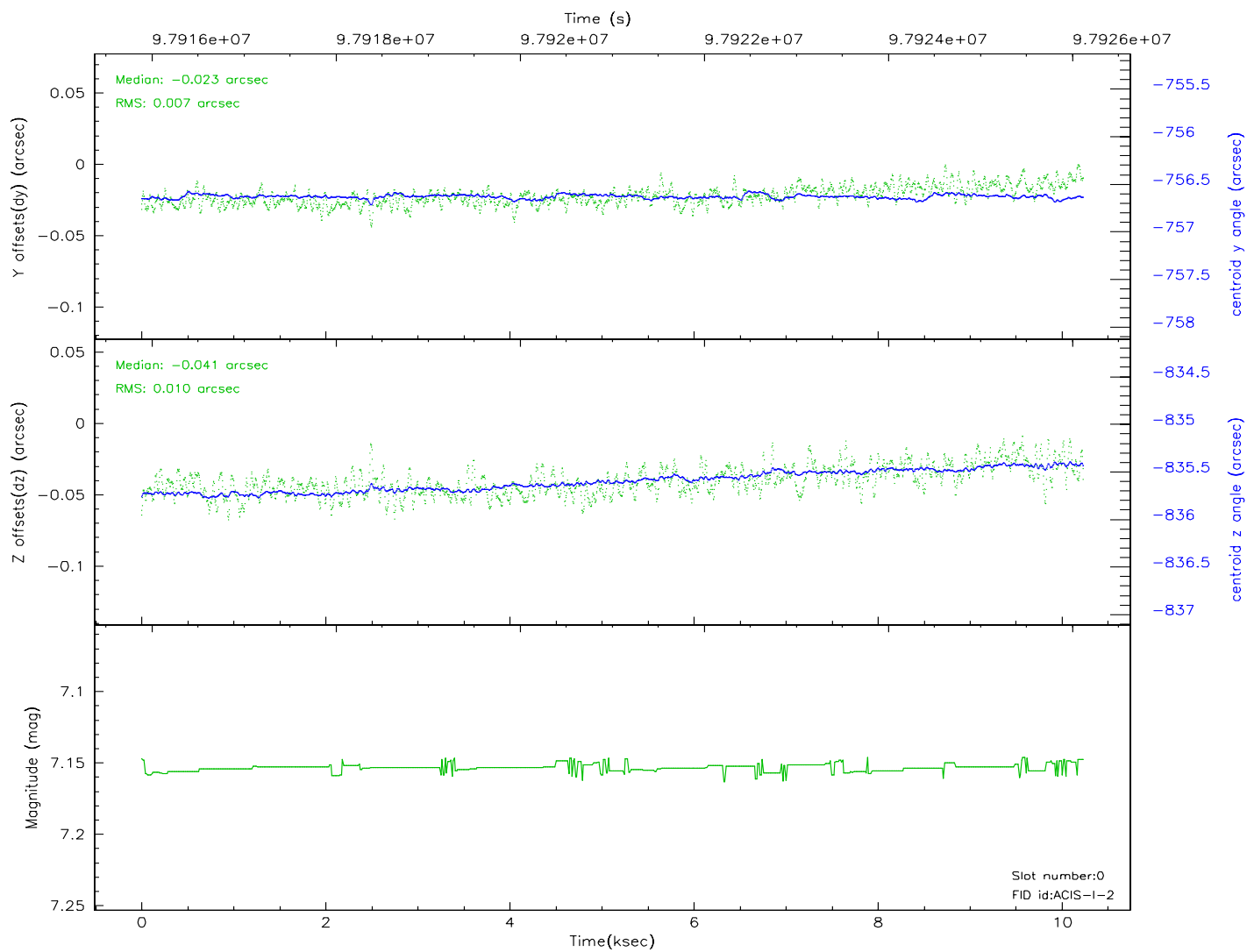
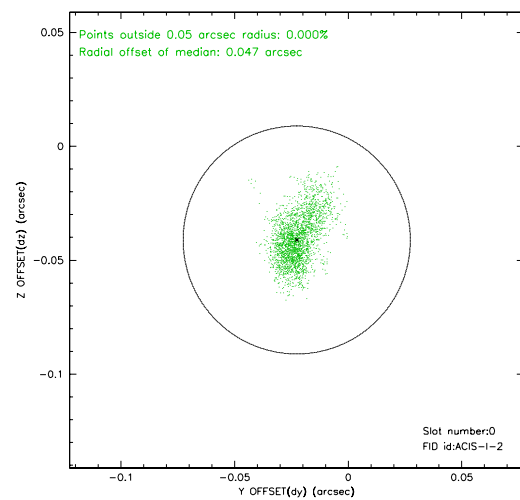
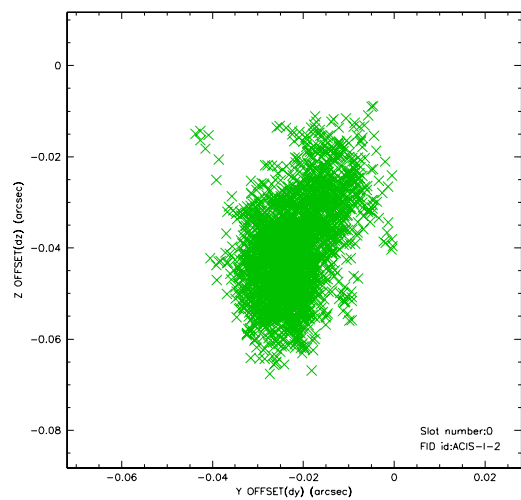


## 2.4.5 Slot 7

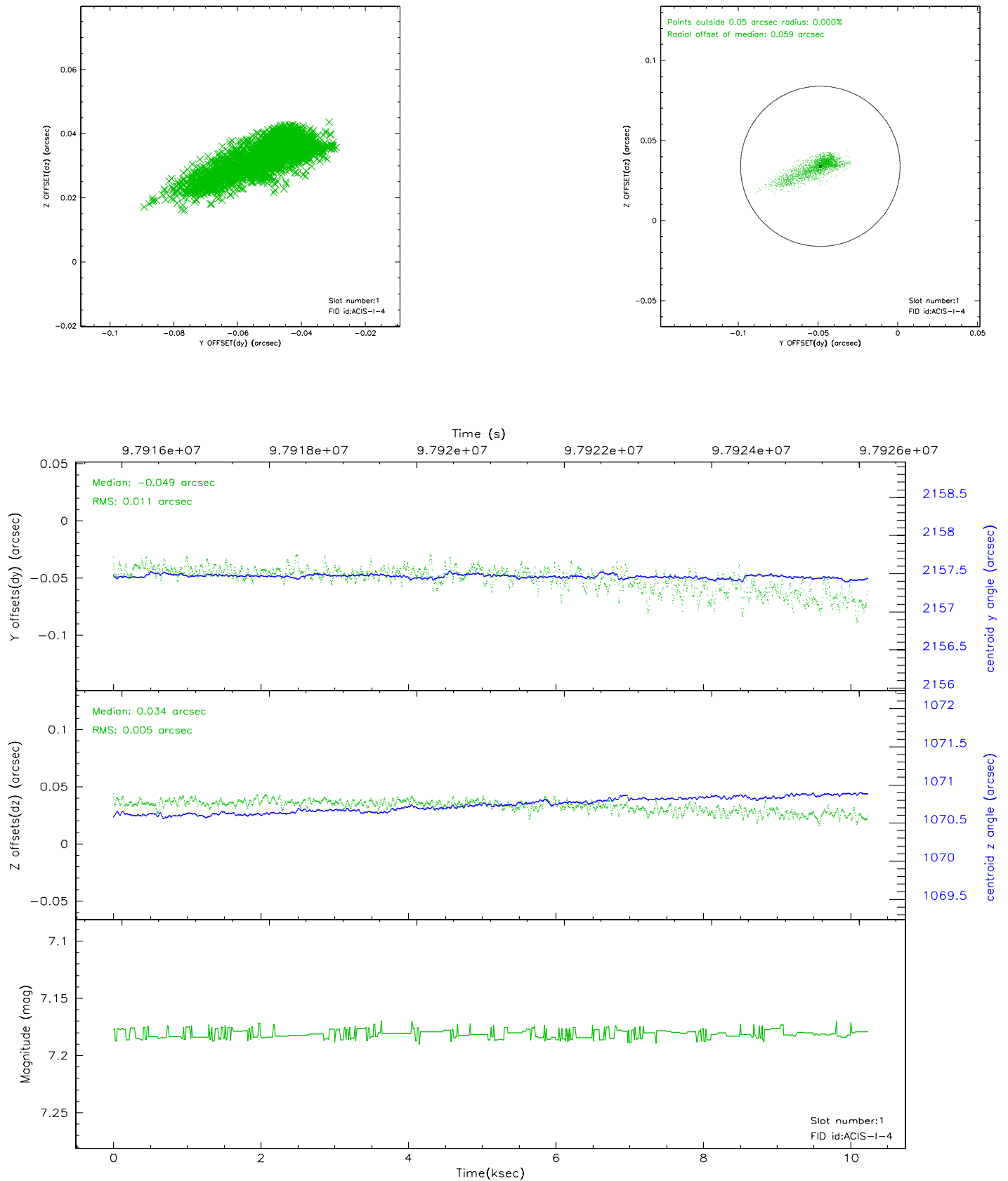


## 2.5 FID Slots

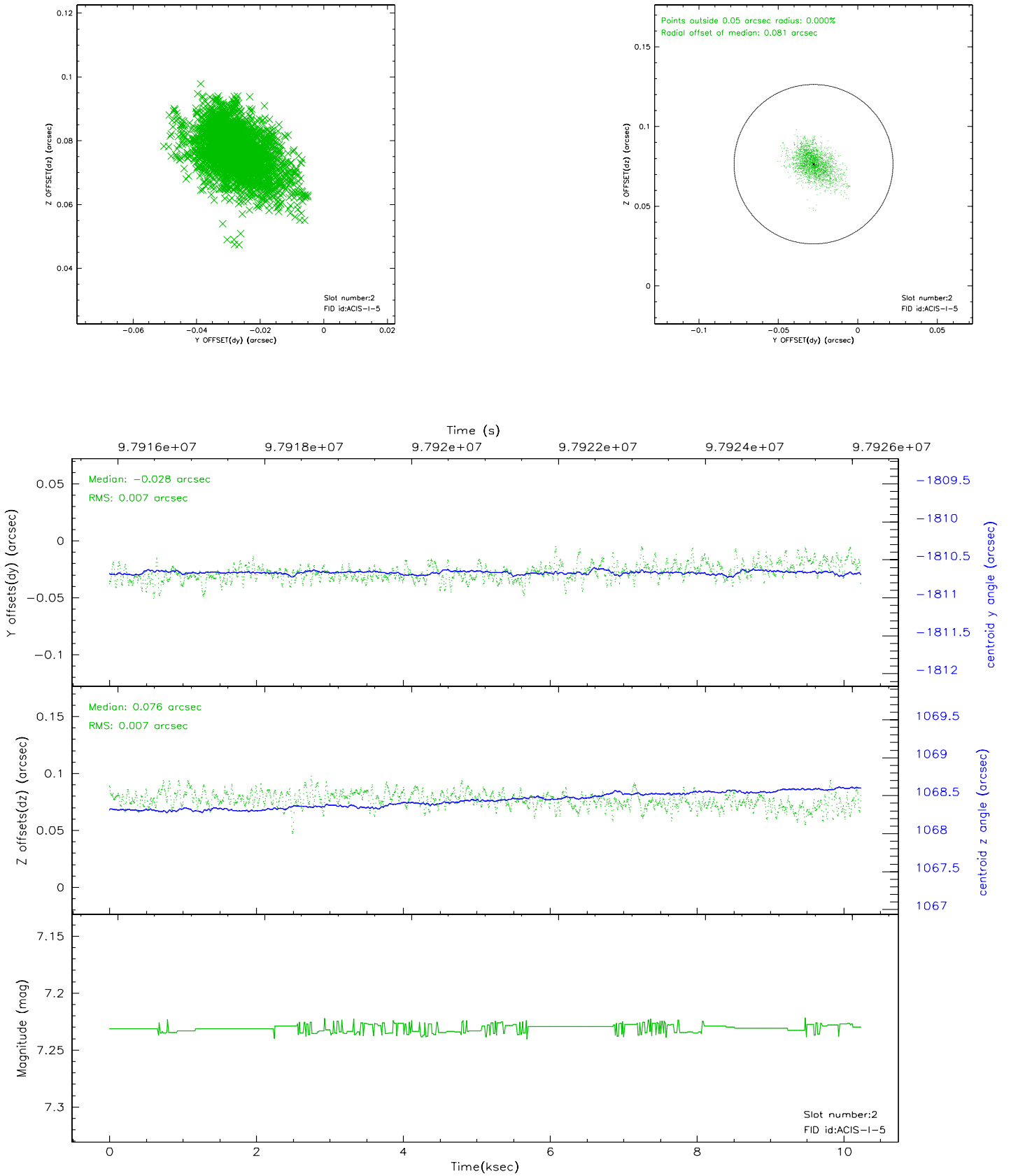
### 2.5.1 Slot 0



## 2.5.2 Slot 1



### 2.5.3 Slot 2





### 3 Point Sources

## A Summary

### A.1 Status

V&V Scientist	Beth Sundheim
V&V Date (YYYY-MM-DD)	2006.11.06
V&V Edition	1
V&V Disposition and Status	OK
V&V Charge Time	10.234

### A.2 Comments