

V&V Reference Report

L2 ASCDS Version : 7.6.7.2

Observation 60203 - L2 Version 001
Chandra X-Ray Center

L2 Processing Date : May 1 2006

Contents

1	Front	2
2	OBI	3
2.1	OBI	3
2.1.1	Images	3
2.1.2	Bias	3
2.1.3	Parameters	4
2.1.4	Events	4
2.2	Compared Parameters	5
2.3	Aspect	6
2.4	Star Slots	8
2.5	FID Slots	8
A	Summary	9
A.1	Status	9
A.2	Comments	9

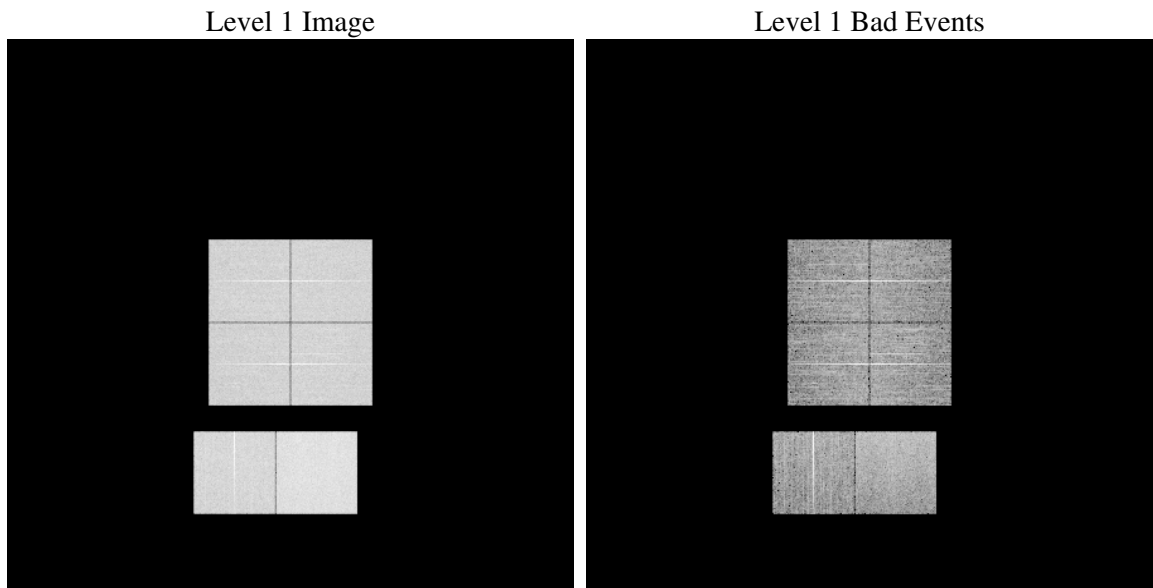
1 Front

seq_num	
obs_id	60203
title	ACIS-012367 diagnostics
observer	CHANDRA engineering request/realtime commanding
object	
dtcycle	0
cycle	P
ra_targ	0.0
dec_targ	0.0
ra_nom	36.969441295807
dec_nom	-22.994812717215
roll_nom	136.62518698439
revision	2
ontime	8278.3999691606
livetime	8173.573884097
ontime0	6292.7770432234
ontime1	6340.305231601
ontime2	5909.256308049
ontime3	6124.1651178896
ontime6	6593.1011203527
ontime7	8278.3999691606
l2events	1149020

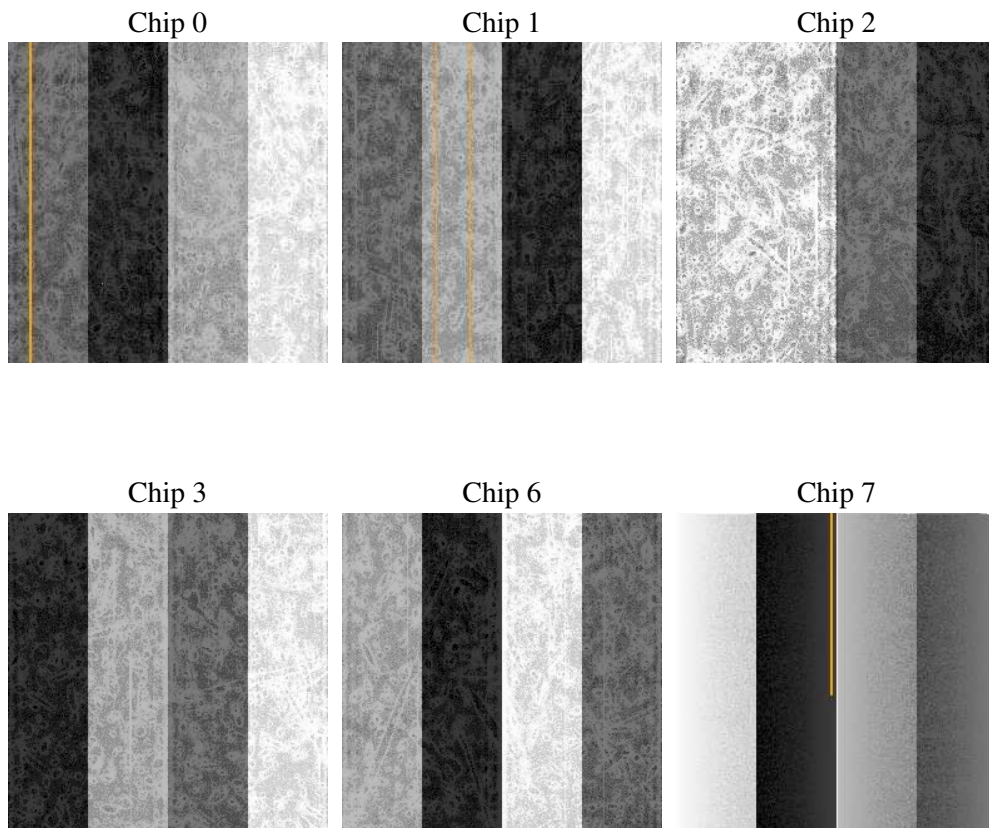
2 OBI

2.1 OBI

2.1.1 Images



2.1.2 Bias



2.1.3 Parameters

obi_num	0
ascdsver	7.6.7.2
caldbver	3.2.1
date	2006-05-01T22:29:33
revision	2

sched_exp_time	0.0
ontime	8280.7511761487
ontime0	6294.0424523354
ontime1	6342.6564385891
ontime2	5911.6075150371
ontime3	6125.5126070082
ontime6	6595.4523273408
ontime7	8280.7511761487
l1events	1500171

2.1.4 Events

	ccd 0	ccd 1	ccd 2	ccd 3	ccd 6	ccd 7
level 1 events	231821	233601	223546	233391	255951	321861
rejected events	44030	43492	45102	48352	49843	63094
rejected %	18%	18%	20%	20%	19%	19%

	ccd 0	ccd 1	ccd 2	ccd 3	ccd 6	ccd 7
grade 0 events	103741	103547	100622	104329	111550	42159
	44%	44%	45%	44%	43%	13%
grade 1 events	595	534	605	607	509	139
	0%	0%	0%	0%	0%	0%
grade 2 events	32585	34391	29667	31133	35866	80547
	14%	14%	13%	13%	14%	25%
grade 3 events	12177	11922	11700	11954	12673	17861
	5%	5%	5%	5%	4%	5%
grade 4 events	11920	12000	11588	11941	12660	17295
	5%	5%	5%	5%	4%	5%
grade 5 events	2759	2823	2548	2857	3193	7235
	1%	1%	1%	1%	1%	2%
grade 6 events	27368	28249	24867	25682	33359	100905
	11%	12%	11%	11%	13%	31%
grade 7 events	40676	40135	41949	44888	46141	55720
	17%	17%	18%	19%	18%	17%

2.2 Compared Parameters

Parameter	Planned	Actual	Parameter	Planned	Actual
Instrument	ACIS	ACIS	Obspar format version number	6	6
Detector	ACIS-012367	ACIS-012367	Obspar file type	PREDICTED	ACTUAL
Grating	NONE	NONE	Obspar update status	NONE	UPDATED
Data mode	FAINT	FAINT	On-chip summing requested	N	N
Observation mode	SECONDARY	SECONDARY	Subarray requested	NONE	NONE
Pointing RA	0	36.96944129580671	Alternating exposures requested	N	N
Pointing Dec	0	-22.99481271721544	Primary exposure time	0.000000	3.2
Pointing Roll	0.0	136.6251869843867			
SIM focus pos (mm)	-0.782348	-0.7809083437167272			
SIM defocus (mm)	0	0.7524282956875696			
SIM translation stage pos (mm)	-233.592463	250.466033080201			
SIM translation stage offset (mm)	0	-0.01005468664627074			
Observation start time	203133734.392596	203133733.3676			
Observation start date	2004-06-09T02:02:14	2004-06-09T02:02:13			
Observation end time	203157159.743631	203157158.71864			
Observation end date	2004-06-09T08:32:40	2004-06-09T08:32:38			
Read mode	TIMED	TIMED			

2.3 Aspect

2.4 Star Slots

2.5 FID Slots

A Summary

A.1 Status

V&V Scientist	Jen Lauer
V&V Date (YYYY-MM-DD)	2006.05.02
V&V Edition	1
V&V Disposition and Status	OK
V&V Charge Time	8.27839996

A.2 Comments

The ACIS focal plane temperature dropped by a degree over the observation, and is above calibration limits for the entire observation.